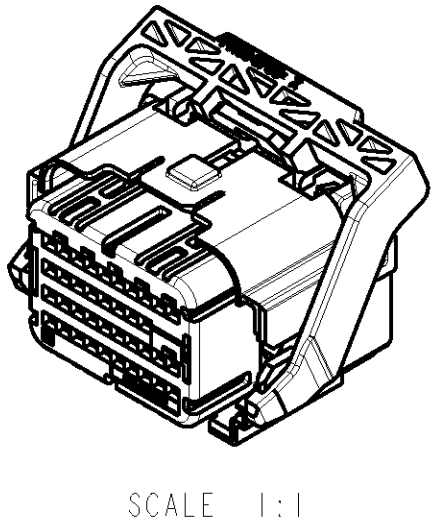
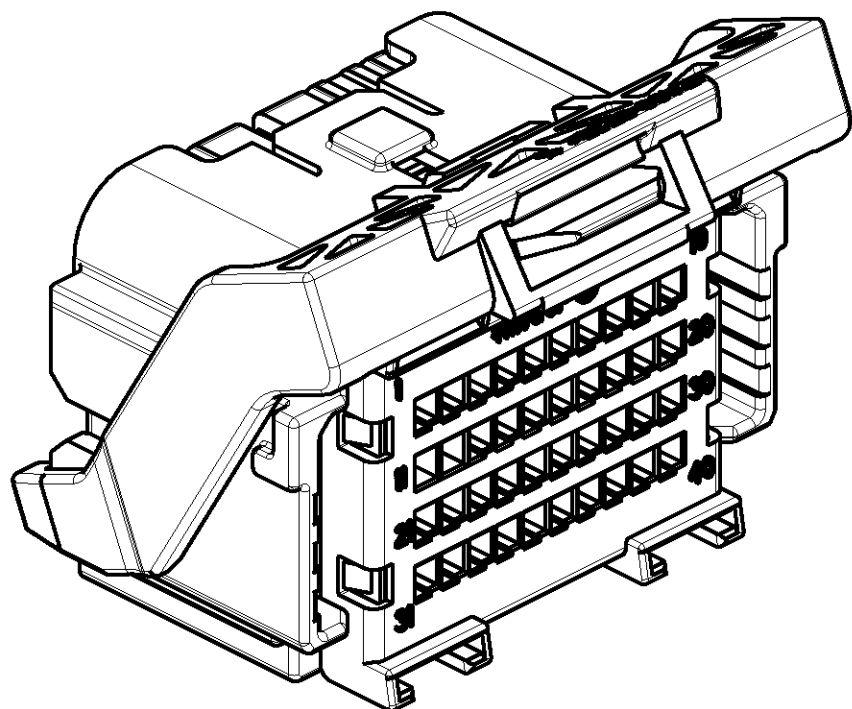
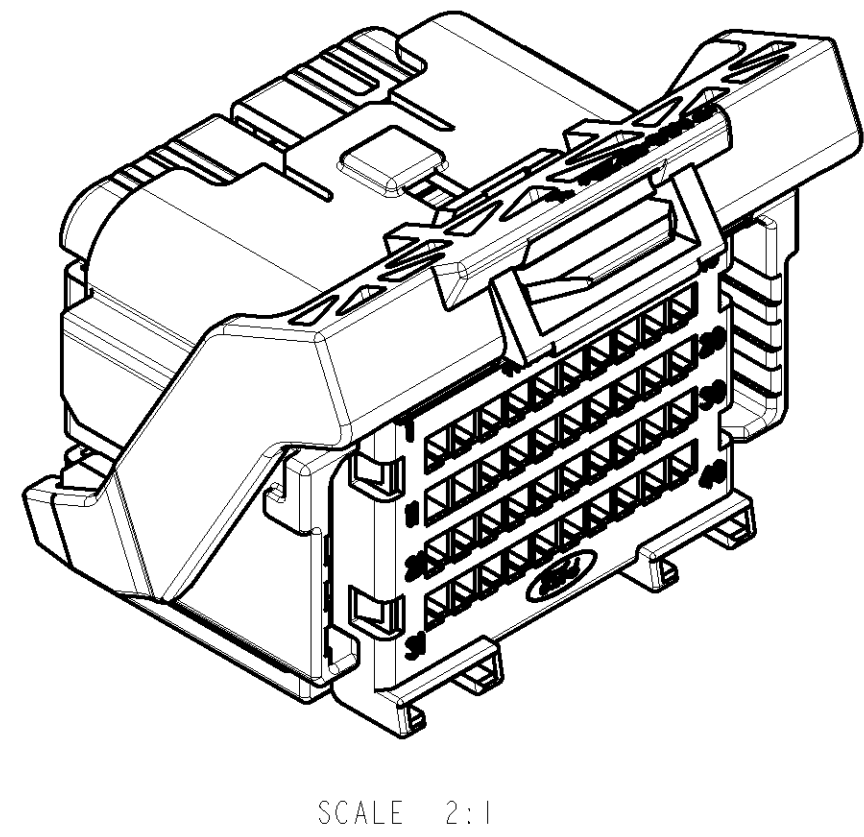
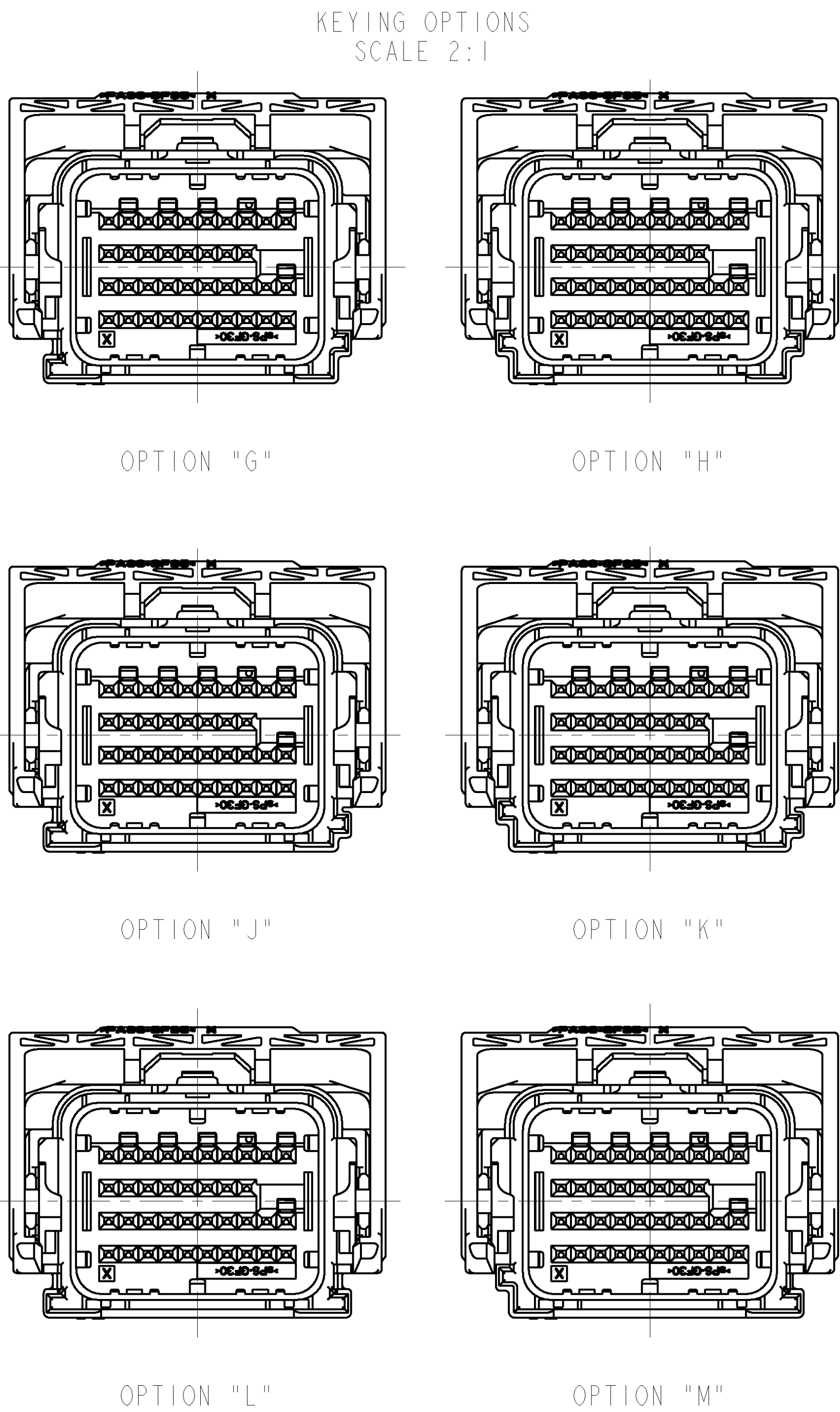
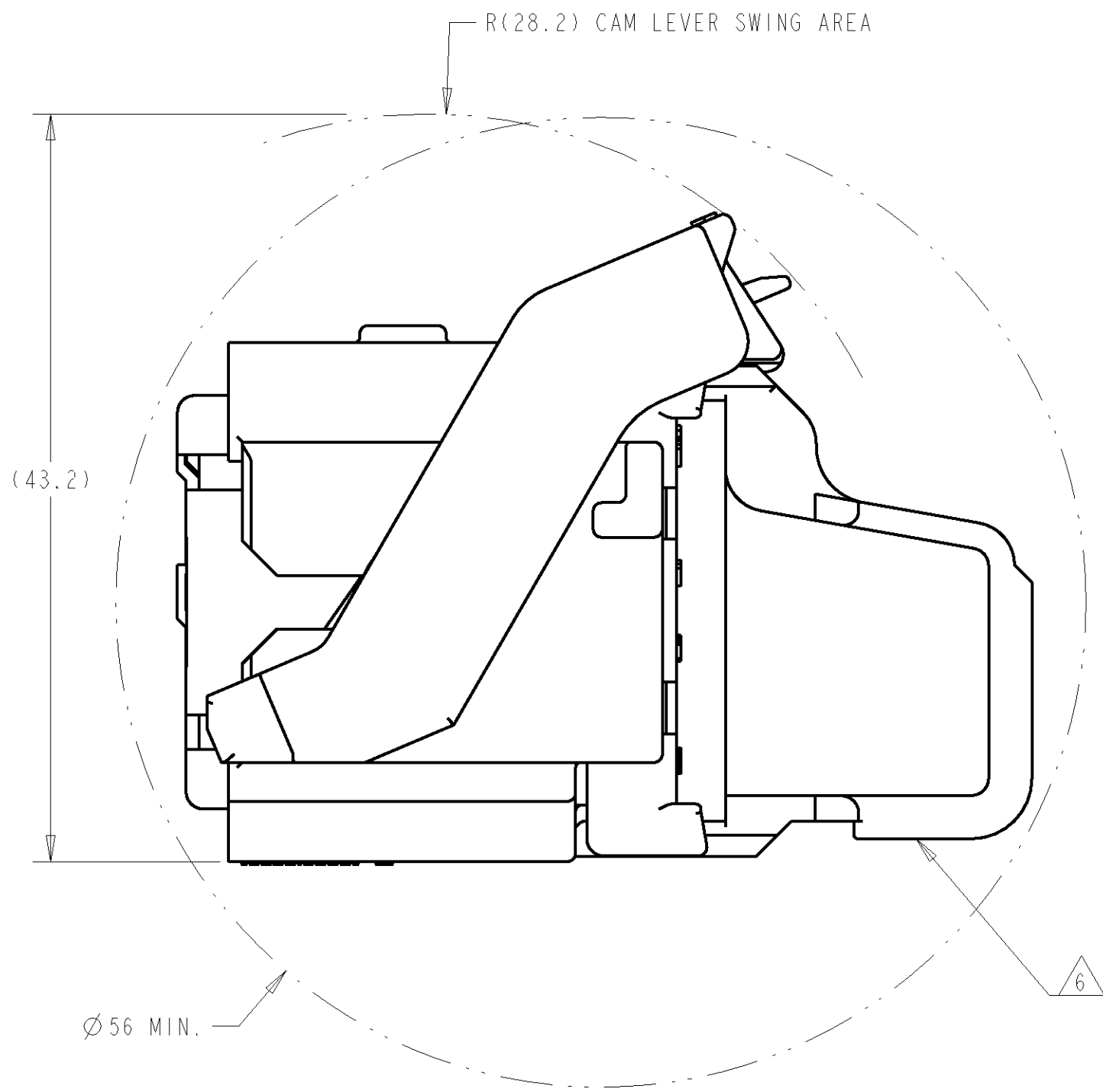
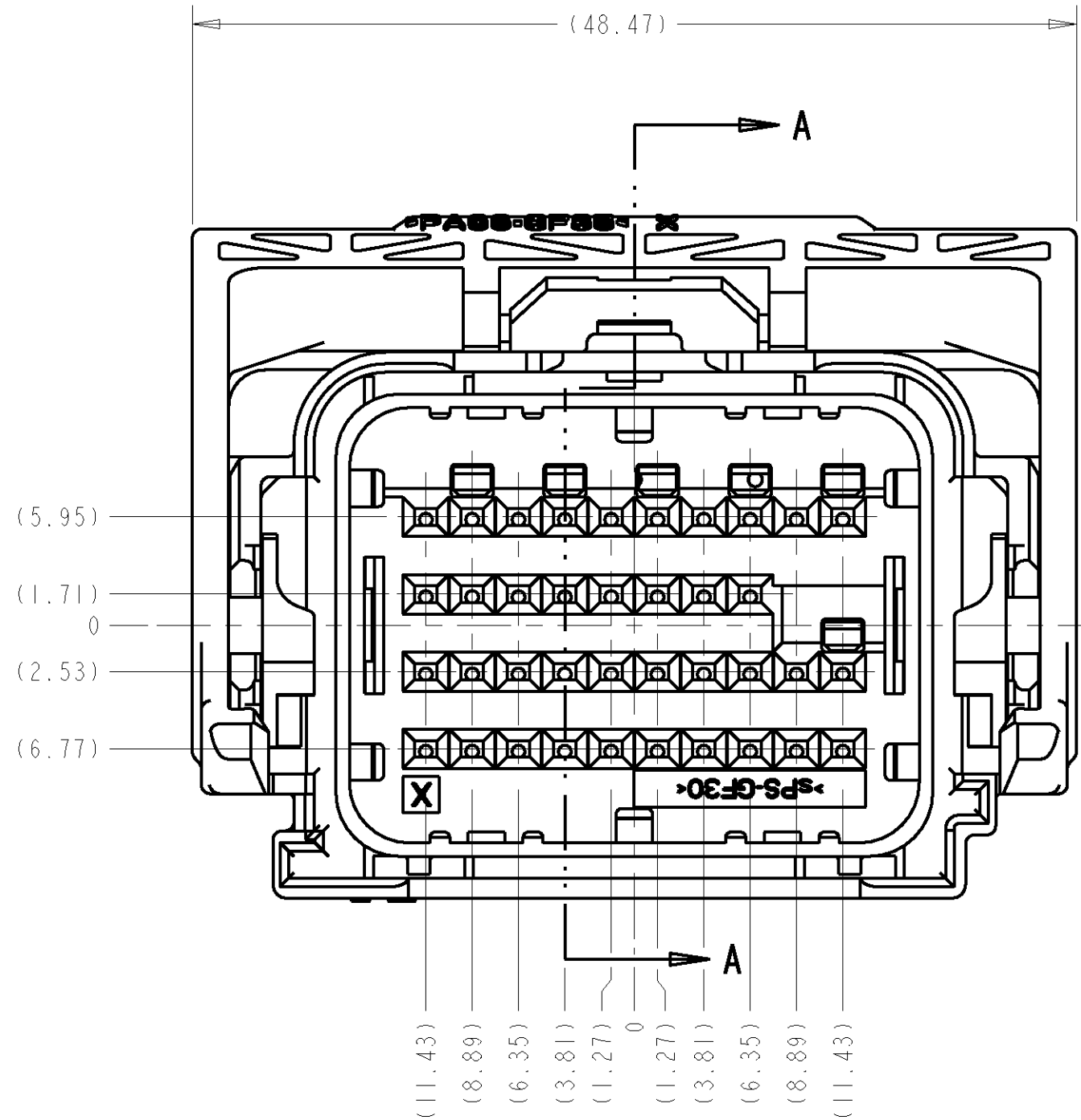
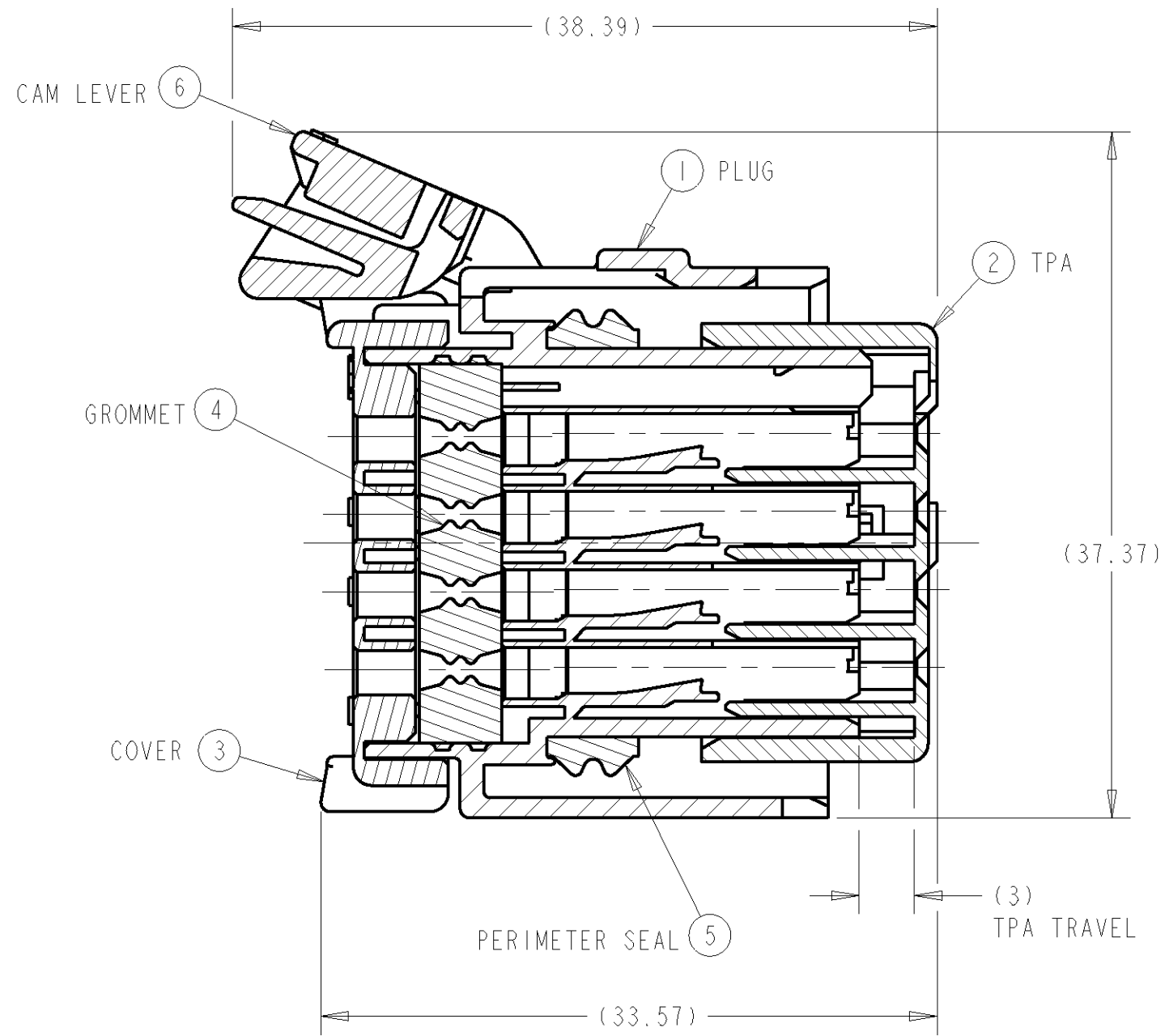


LOC		DIST		REVISIONS			
FX		00		REV	DESCRIPTION	DATE	OWN
				D1	REVISED PER ECR 07-029132	07JAN2008	DLD WTW
				E	REVISED PER ECR 07-030366	08JAN2008	DLD WTW
				F	REVISED PER ECO 08-006962	19MAR2008	DLD WTW




- NOTE(S):
1. APPLICABLE TERMINAL PART NUMBERS (SOLD SEPARATELY):  
FOR TIN APPLICATIONS: 1393367 AND 1393366.  
FOR GOLD APPLICATIONS: 1393365 AND 1393364.  
FOR TERMINATION AND REELING OPTIONS  
SEE DRAWINGS 1393367, 1393366, 1393365, AND 1393364.
  2. COMPATIBLE WIRE SIZES FOR MAT SEAL DESIGN 1.19 TO 2.06 O.D.  
(22-18 AWG, 0.35-0.75 mm2)
  3. TPA AND CAM LEVER ARE SHIPPED IN THEIR PRE-LOADED POSITION.  
ALL ASSEMBLIES ARE TO BE TRAY PACKAGED.
  4. CUSTOMER PART NUMBER AND TRACEABILITY CODE (YY = TWO DIGIT YEAR,  
JJJ = JULIAN DAY, HH = TWO DIGIT MILITARY HOUR, A=ASSEMBLY PROCESS  
USED) ARE PRINTED IN THIS LOCATION.
  5. PART ASSEMBLY WEIGHT WITHOUT TERMINALS AND WITH STANDARD PIN-OUT  
CONFIGURATION IS 26.09 GRAMS.
  6. OPTIONAL WIRESHIELD P/N 8-1419157-8 (SOLD SEPARATELY). PLEASE CONTACT  
YOUR TYCO ELECTRONICS SALES REPRESENTATIVE FOR AVAILABILITY AND PRICING.

KEYING OPTION "G" SHOWN  
SEE SHEET 2 FOR BILL OF MATERIALS  
AND SHEET 3, 4 AND 5 FOR PIN-OUT CHARTS

TOLERANCES UNLESS OTHERWISE SPECIFIED:		TYPICAL DIMENSIONS:		MATERIAL:		FINISH:		WEIGHT:		CUSTOMER DRAWING:	
0 PLC ±.3		mm		SEE CHART ON SHEET 2		-		SEE NOTE 5		-	
1 PLC ±0.3											
2 PLC ±0.10											
3 PLC ±.3											
4 PLC ±.3											
ANGLES ±.3°											
SIZE		CAGE CODE		DRAWING NO		RESTRICTED TO		SCALE		SHEET	
14NOV2006		14NOV2006		14NOV2006		-		3:1		1 OF 5	
NAME		PRODUCT SPEC		APPLICATION SPEC		REV		F			
A. HOLT		W. WELLINSKY		W. WELLINSKY		00779		1924170			
Tyco Electronics		Tyco Electronics		Harrisburg, PA 17105-3608							
40 WAY SHORTING BAR ARM PLUG ASSEMBLY WITHOUT SHORTING BARS LOADED											

[illegible][illegible]

<small>THIS IS A STANDARD IEC CONNECTOR FOR THE PURPOSES OF THE IEC ORGANIZATION          THE IEC ORGANIZATION IS NOT RESPONSIBLE FOR THE CONTENTS OF THIS DOCUMENT</small>		DRAWN <b>A. HOLT</b> 14NOV2006		 Tyco Electronics Harrisburg, PA 17105-3608	
DIMENSIONS: mm		TOLERANCES UNLESS OTHERWISE SPECIFIED:		NAME	



LOC	DIST	REVISIONS						
FX	00	P	LTR	DESCRIPTION	DATE	DWN	APVD	
		-	-	SEE SHEET 1	-	-	-	

PIN OUT CHART																																										
BLANK CAVITIES INDICATE OPEN TERMINAL HOLE POSITIONS																																										
CAVITIES WITH A NUMERIC SYMBOL INDICATE CLOSED TERMINAL HOLE POSITIONS																																										
TERMINAL HOLE POSITION																																				ASSEMBLY PART NUMBER	KEYING OPTION					
1	2	3	4	5	6	7	8	9	10	11	12	13	14	15	16	17	18	19	20	21	22	23	24	25	26	27	28	29	30	31	32	33	34	35	36	37	38	39	40			
				5	6	7	8	9	10	11	12	13	14	15	16								24			27	28	29	30					35	36	37	37	39	40	6-1924170-6	G	
			3	4	5	6	7	8	9	10	11	12	13	14	15	16	17	18					23	24		26								35	36	37	37	39	40	6-1924170-7	G	
			3	4	5	6	7	8	9	10	11	12	13	14	15	16							24			27	28	29	30					35	36	37	37	39	40	6-1924170-8	G	
			3	4	5	6	7	8	9	10	11	12	13	14	15	16							24											35	36	37	37	39	40	6-1924170-9	G	
1	2			5	6	7	8	9	10	11	12	13	14	15	16					21	22		24			27	28	29	30							37	38	39	40	7-1924170-0	G	
				5	6	7	8	9	10	11	12	13	14	15	16								24			27	28	29	30					35	36	37	38	39	40	7-1924170-1	G	
1	2					7	8	9	10	11	12	13	14	15	16					21	22		24											35	36	37	38	39	40	7-1924170-2	G	
1	2					7	8	9	10	11	12	13	14	15	16					21	22		24			27	28	29	30					35	36	37	38	39	40	7-1924170-3	G	
											11	12											24																		7-1924170-4	G
1	2										11	12	13	14	15	16						24																			7-1924170-5	G
											11	12																				32					37	38	39	40	7-1924170-6	G
											11	12							19	20			24																	7-1924170-7	G	
											11	12							19	20													33	34						7-1924170-8	G	
						7	8	9	10	11	12								19	20			24																	7-1924170-9	G	
						7	8	9	10	11	12								19	20													33	34						8-1924170-0	G	
						7	8	9	10	11	12																				31	32				37	38	39	40	8-1924170-1	G	
								9	10	11	12						17	18	19	20	21	22		24		26							33	34	35	36	37	38	39	40	8-1924170-2	G
				5	6	7	8	9	10	11	12	13	14	15	16																					37	38			8-1924170-3	G	
			3	4	5	6	7	8	9	10	11	12	13	14	15	16			19	20																37	38	39	40	8-1924170-4	G	
						7	8	9	10	11	12	13	14	15	16			19	20																	37	38	39	40	8-1924170-5	G	
1	2					7	8	9	10	11	12	13	14	15	16		17	18		21	22			25	26	27	28	29	30	31	32	33	34	35	36	37	38		8-1924170-6	G		
1	2					7	8	9	10			13	14	15	16					21	22		24			27	28	29	30					35	36	37	38		8-1924170-7	G		
1	2					7	8	9	10			13	14	15	16					21	22		24			27	28	29	30					35	36	37	38		8-1924170-8	G		
1	2	3	4			7	8	9	10	11	12		14	15		17	18		21	22		24		25	26	27	28	29	30	31	32	33	34	35	36	37	38		8-1924170-9	G		
1	2	3	4			7	8	9	10	11	12		14	15		17	18		21	22	23	24	25	26	27	28	29	30	31	32			35	36	37	38		9-1924170-0	G			
1	2	3	4	5	6	7	8	9	10	11	12	13	14	15	16				21	22		24			27	28	29	30					35	36	37	38		9-1924170-1	G			
		3	4	5	6					11	12												24											35	36	37	38	39	40	9-1924170-2	G	
						7	8	9	10	11	12												24											35	36	37	38		9-1924170-3	G		
										11	12												24											35	36	37	38	39	40	9-1924170-4	G	
		3	4	5	6					11	12								19	20																	39	40	9-1924170-5	G		
1	2	3	4	5	6	7	8	9	10	11	12	13	14	15	16			19	20	21	22	23	24		26	27	28	29	30				35	36	37	38	39	40	9-1924170-6	G		
						7	8	9	10	11	12	13	14	15	16			19	20				24										33	34			37	38	39	40	9-1924170-7	G
		3	4	5	6	7	8	9	10	11	12	13	14	15	16			19	20				24										33	34			37	38	39	40	9-1924170-8	G
		3	4	5	6	7	8	9	10	11	12	13	14	15	16			19	20				24												37	38	39	40	9-1924170-9	G		
						7	8	9	10	11	12	13	14	15	16			19	20				24												37	38	39	40	0-1924171-1	G		
										11	12							19	20																				0-1924171-2	G		
		3	4	5	6	7	8	9	10	11	12							19	20				24														39	40	0-1924171-3	G		
						7	8	9	10	11	12																						33	34					0-1924171-4	G		
										11	12																												0-1924171-5	G		
1	2	3	4	5	6	7	8	9	10	11	12	13	14	15	16					21	22		24											35	36	37	38	39	40	0-1924171-6	G	
						7	8	9	10	11	12												24												35	36				0-1924171-7	G	
										11	12	13	14	15	16								24																0-1924171-8	G		
1	2	3	4	5	6	7	8	9	10	11	12	13	14	15	16			19	20	21	22	23	24		26	27	28	29	30				35	36	37	38		40				



# Mouser Electronics

Authorized Distributor

Click to View Pricing, Inventory, Delivery & Lifecycle Information:

[TE Connectivity:](#)

[1-1924173-0](#)