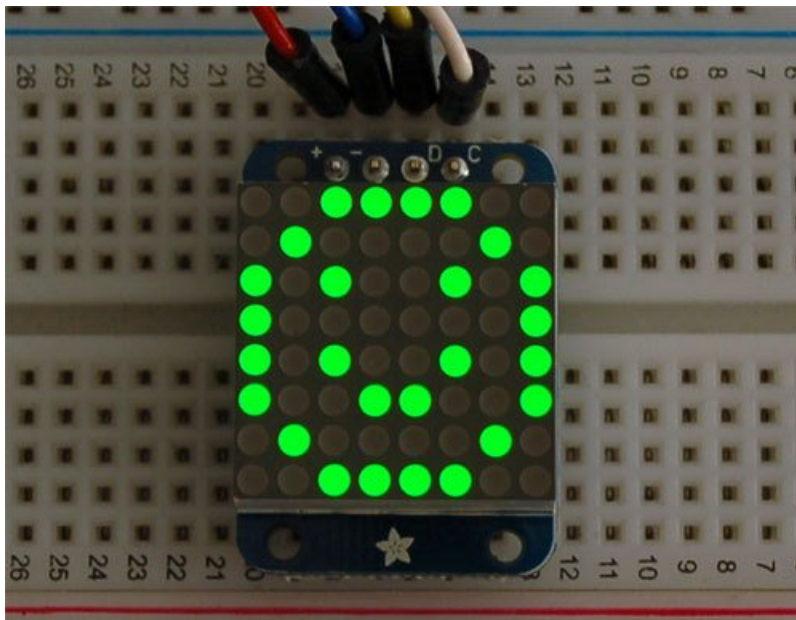




## Adafruit LED Backpacks

Created by lady ada



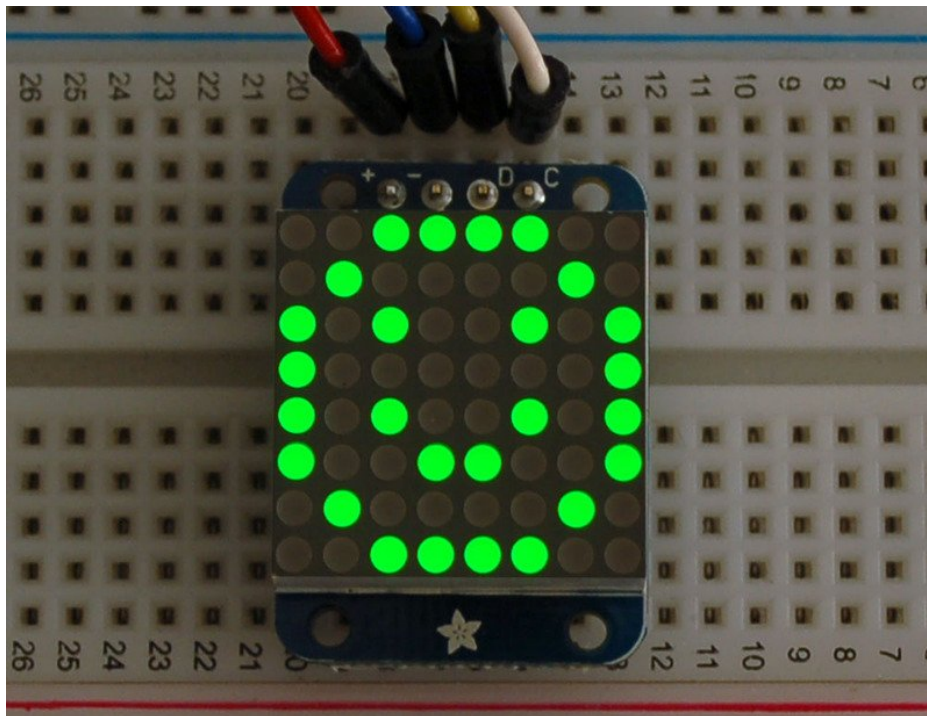
Last updated on 2020-01-18 01:06:00 AM UTC

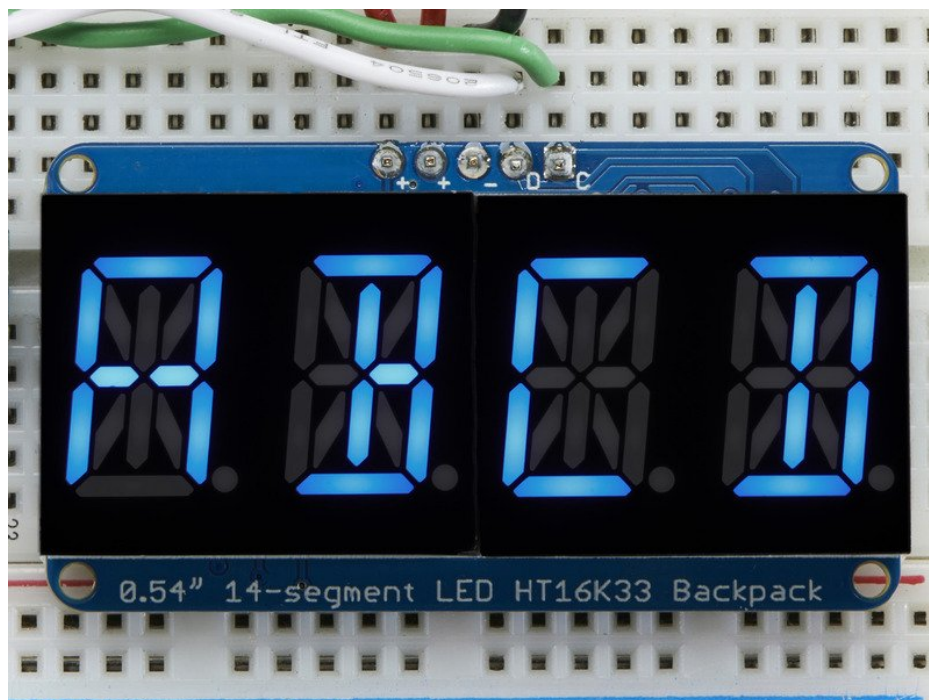
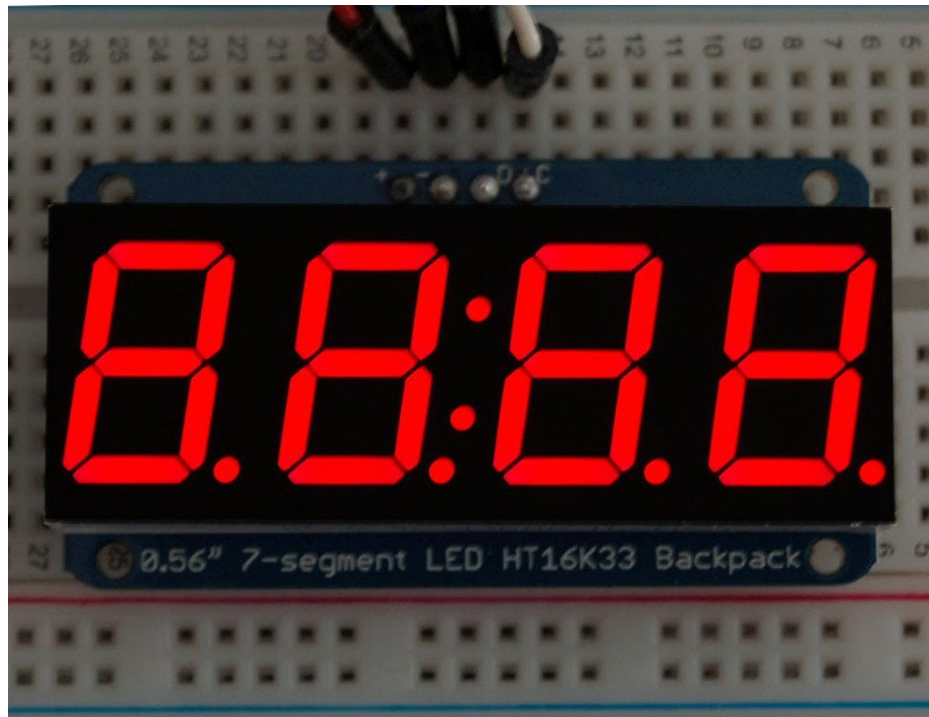
## Overview

What's better than a single LED? Lots of LEDs! A fun way to make a small display is to use an [8x8 matrix](https://adafru.it/aLG) (<https://adafru.it/aLG>) or a [4-digit 7-segment display](https://adafru.it/aLH) (<https://adafru.it/aLH>). Matrices like these are 'multiplexed' - so to control 64 LEDs you need 16 pins. That's a lot of pins, and there are [driver chips like the MAX7219](http://adafru.it/453) (<http://adafru.it/453>) that can control a matrix for you but there's a lot of wiring to set up and they take up a ton of space. Here at Adafruit we feel your pain! After all, wouldn't it be awesome if you could control a matrix without tons of wiring? That's where these adorable LED matrix backpacks come in.

We have them in quite a few flavors!

- [Adorable Mini 8x8](https://adafru.it/ttf) (<https://adafru.it/ttf>)
- [Classic 1.2" 8x8 \(round and square dots\)](https://adafru.it/ttA) (<https://adafru.it/ttA>)
- [4-digit 0.56" 7-segment](https://adafru.it/ttB) (<https://adafru.it/ttB>)
- [4-digit 1.2" 7-segment](https://adafru.it/ttC) (<https://adafru.it/ttC>)
- [4-digit 0.54" 14-segment Alphanumeric](https://adafru.it/ttD) (<https://adafru.it/ttD>)
- [Bi-color 8x8](http://adafru.it/902) (<http://adafru.it/902>)
- [Bi-color Bargraph](http://adafru.it/1721) (<http://adafru.it/1721>)





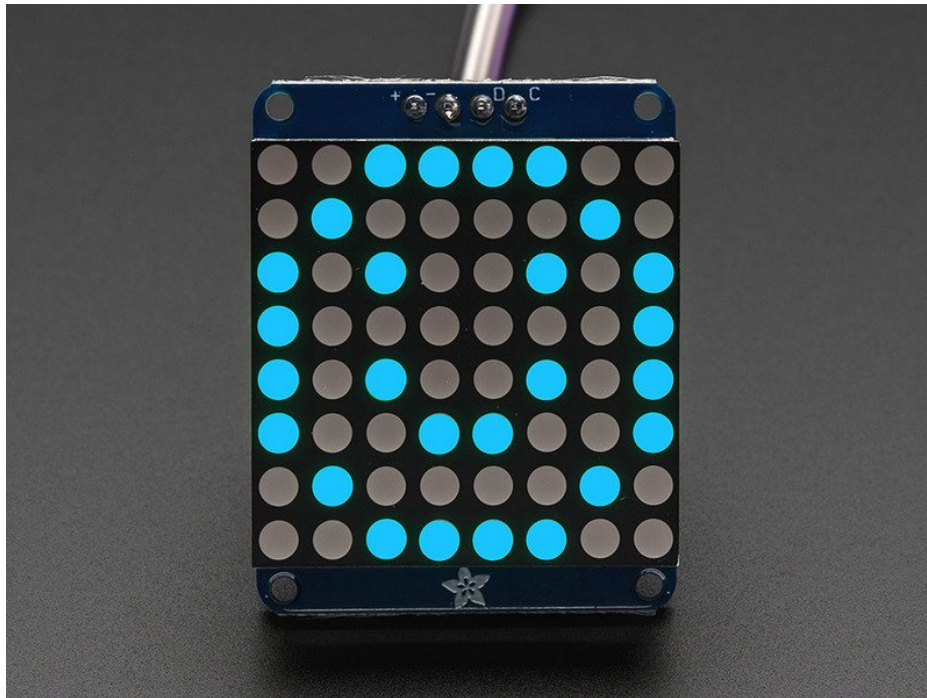
The matrices use a driver chip that does all the heavy lifting for you: They have a built in clock so they multiplex the display. They use constant-current drivers for ultra-bright, consistent color (the images above are photographed at the dimmest setting to avoid overloading our camera!), 1/16 step display dimming, all via a simple I2C interface. The backpacks come with address-selection jumpers so you can connect up to four mini 8x8's or eight 7-segments (or a combination, such as four mini 8x8's and four 7-segments, etc) on a single I2C bus.

The product kit comes with a fully tested and assembled LED backpack, a 4-pin header and the matrix of your choice. A bit of soldering is required to attach the matrix onto the backpack but its very easy to do and only takes about 5 minutes.

Of course, in classic Adafruit fashion, we also have a detailed tutorial showing you how to solder, wire and control the display. We even wrote a very nice library for the backpacks so you can get running in under half an hour, displaying images on the matrix or numbers on the 7-segment. If you've been eyeing matrix displays but hesitated because of the complexity, this is the solution you've been looking for!

## 1.2" 8x8 Matrix

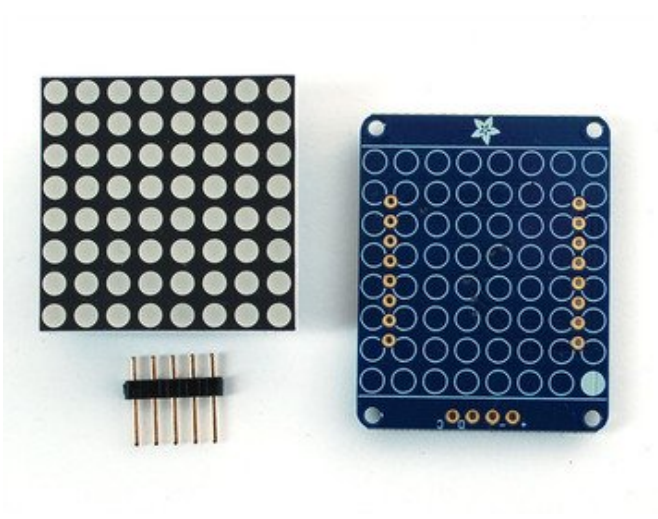
This version of the LED backpack is designed for the 1.2" 8x8 matrices. They measure only 1.2"x1.2" so its a shame to use a massive array of chips to control it. This backpack solves the annoyance of using 16 pins or a bunch of chips by having an I2C constant-current matrix controller sit neatly on the back of the PCB. The controller chip takes care of everything, drawing all 64 LEDs in the background. All you have to do is write data to it using the 2-pin I2C interface. There are two address select pins so you can select one of 8 addresses to control up to 8 of these on a single 2-pin I2C bus (as well as whatever other I2C chips or sensors you like). The driver chip can 'dim' the entire display from 1/16 brightness up to full brightness in 1/16th steps. It cannot dim individual LEDs, only the entire display at once.



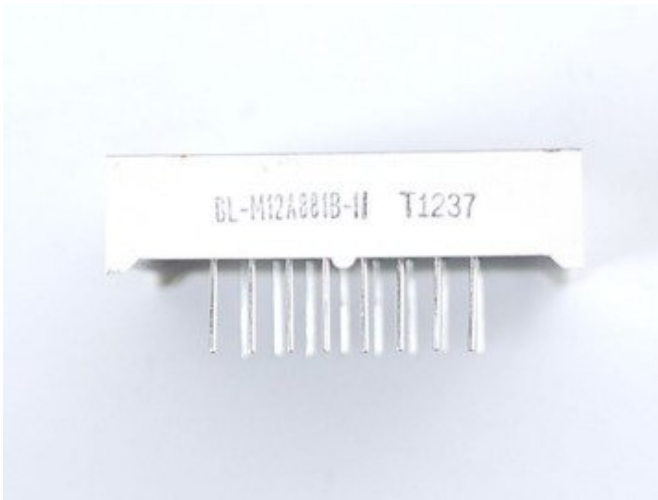




These instructions apply to the 1.2" Matrix only! If you have a Bi-Color or 0.8" square matrix, follow the links on the left side of the page.

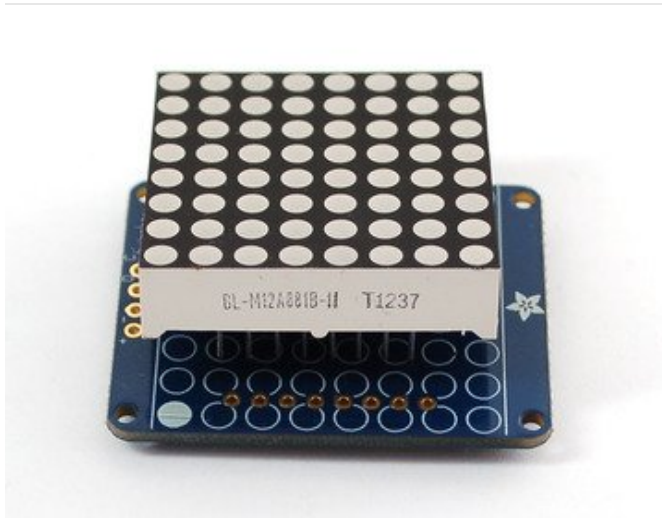


When you buy a pack from Adafruit, it comes with the fully tested and assembled backpack as well as a 8x8 matrix in one of the colors we provide (say, red, yellow or green). You'll need to solder the matrix onto the backpack but it's an easy task.



**WATCH OUT! THE MATRIX MUST BE INSTALLED THE RIGHT WAY!**

First look for the line of text on the side of the LED matrix



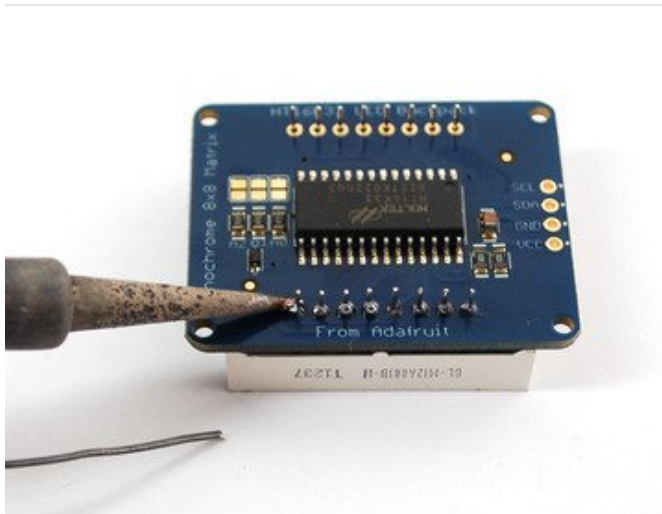
**WATCH OUT! THE MATRIX MUST BE INSTALLED THE RIGHT WAY!**

Find the corner of the backpack with a filled in dot.  
Make sure that the text on the side of the matrix is on the same side as the filled dot



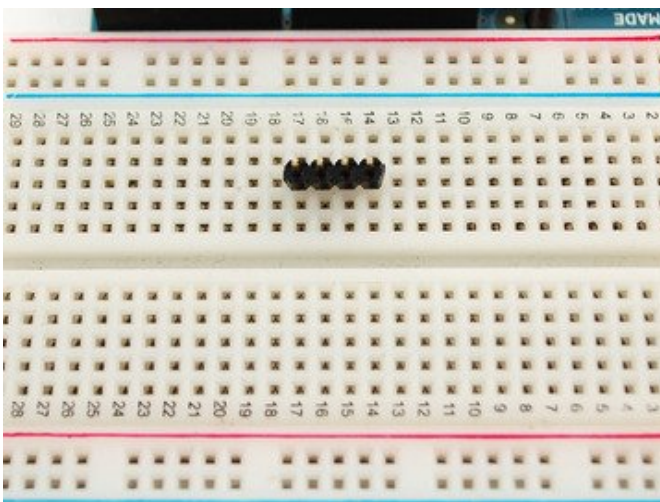
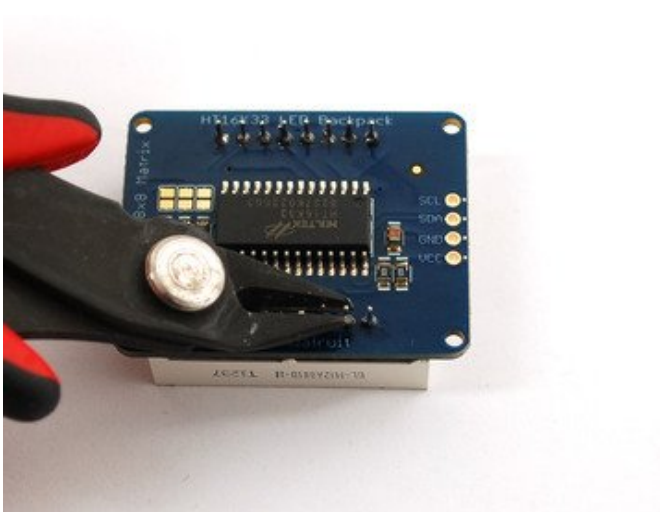
**WATCH OUT! THE MATRIX MUST BE INSTALLED THE RIGHT WAY!**

Slide the matrix into the backpack and flip it over. Triple check that the text is on the same side as the **From Adafruit** text



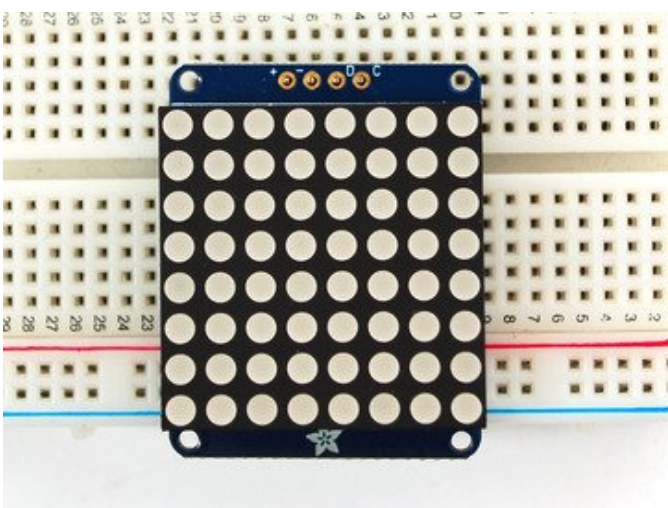
Solder in all 16 pins

Then clip the matrix leads short



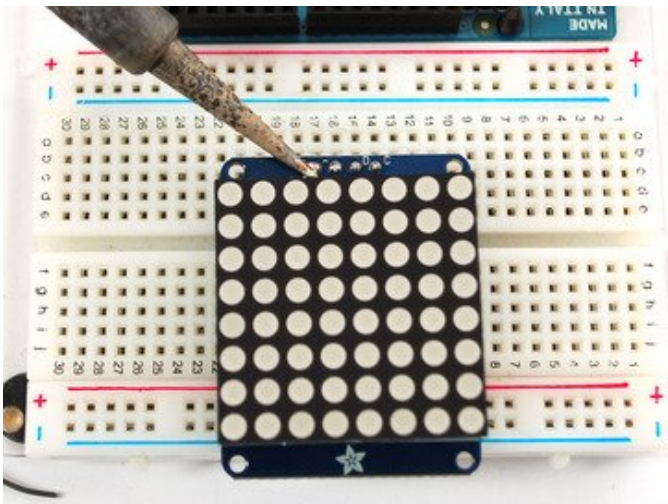
Now you're ready to wire it up to a microcontroller. We'll assume you want to use a 4pin header. You can also of course solder wires directly. Place a 4-pin piece of header with the LONG pins down into the breadboard.





Place the soldered backpack on top of the header.

Solder the four pins



That's it! now you're ready to run the firmware!

# Arduino Setup

## Mini 8x8 Matrix Software

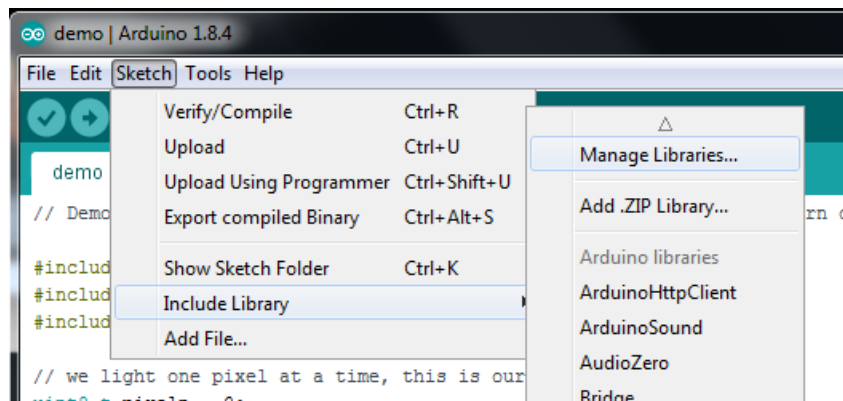
We wrote a basic library to help you work with the mini 8x8 matrix backpack. The library is written for the Arduino and will work with any Arduino as it just uses the I2C pins. The code is very portable and can be easily adapted to any I2C-capable micro.

Wiring to the matrix is really easy

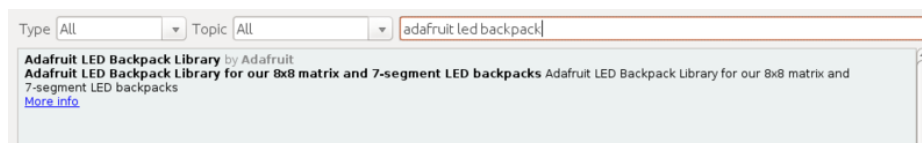
- Connect **CLK** to the I2C clock - on Arduino UNO thats Analog #5, on the Leonardo its Digital #3, on the Mega its digital #21
- Connect **DAT** to the I2C data - on Arduino UNO thats Analog #4, on the Leonardo its Digital #2, on the Mega its digital #20
- Connect **GND** to common ground
- Connect **VCC+** to power - 5V is best but 3V also seems to work for 3V microcontrollers.

Next, download the **Adafruit LED Backpack** library and the **Adafruit GFX** library from the Arduino library manager.

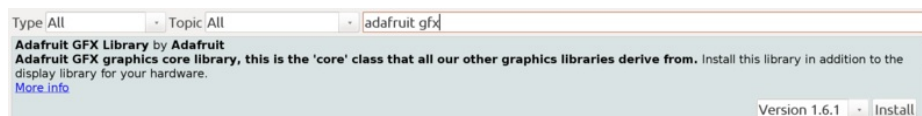
Open up the Arduino library manager:



Search for the **Adafruit LED Backpack** library and install it



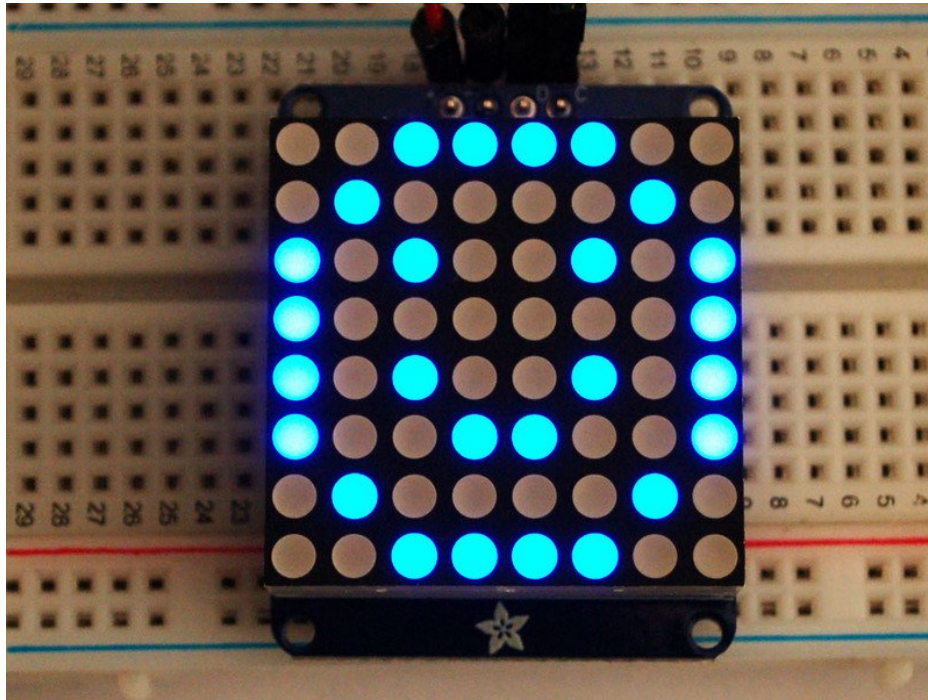
Search for the **Adafruit GFX** library and install it



You should now be able to select the **File->Examples->Adafruit\_LEDBackpack->matrix88** example sketch. Upload it to your Arduino as usual. You should see a basic test program that goes through a bunch of different drawing routine

We also have a great tutorial on Arduino library installation at:

<http://learn.adafruit.com/adafruit-all-about-arduino-libraries-install-use> (<https://adafru.it/aYM>)

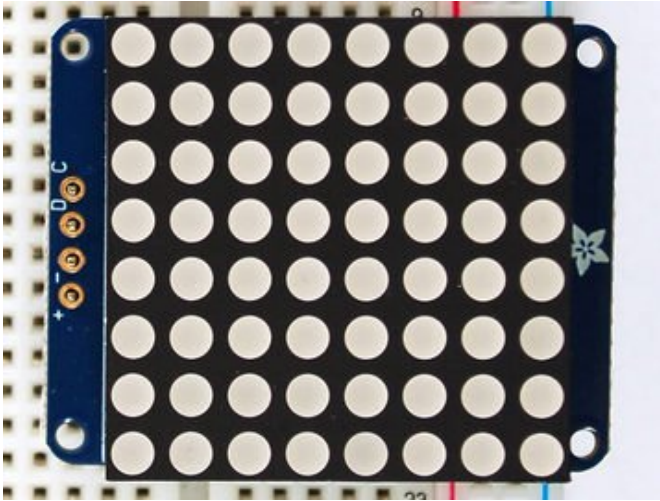


Once you're happy that the matrix works, you can write your own sketches. The 8x8 matrix supports everything the Adafruit GFX library - drawing pixels, lines, rectangles, circles, triangles, roundrects, and small bitmaps. [For more details check out the GFX page which will detail all of the GFX routines \(https://adafru.it/aPx\).](https://adafru.it/aPx)

All the drawing routines only change the display memory kept by the Arduino. Don't forget to call **writeDisplay()** after drawing to 'save' the memory out to the matrix via I2C.

There are also a few small routines that are special to the matrix:

- **setBrightness(*brightness*)** - will let you change the overall brightness of the entire display. 0 is least bright, 15 is brightest and is what is initialized by the display when you start. You can call this function at any time to change the brightness of the -entire- display
- **blinkRate(*rate*)** - You can blink the entire display. 0 is no blinking. 1, 2 or 3 is for display blinking. You can call this function at any time to change the blink rate of the -entire- display



The default orientation for graphics commands on this display places pixel (0,0) at the top-left when the header is at the left and Adafruit logo at the right. To use the matrix as shown above (header at top, logo at bottom), call `matrix.setRotation(3)` before issuing graphics commands.

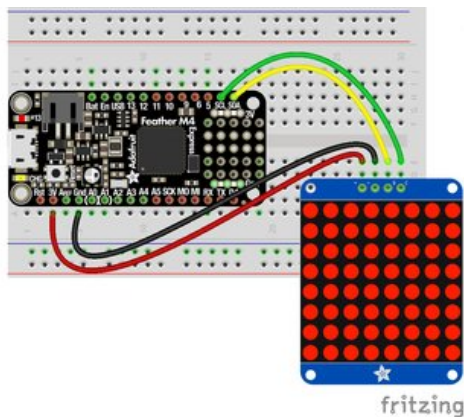
## Wiring

It's easy to use LED Matrices with CircuitPython and the [Adafruit CircuitPython HT16K33](https://adafru.it/u1E) (<https://adafru.it/u1E>) library. This module allows you to easily write CircuitPython code to control the display.

You can use this sensor with any CircuitPython microcontroller board.

We'll cover how to wire the LED Matrix to your CircuitPython microcontroller board. First assemble your LED Matrix.

Connect the LED Matrix to your microcontroller board as shown below.



- Microcontroller 3V to LED Matrix VIN
- Microcontroller GND to LED Matrix GND
- Microcontroller SCL to LED Matrix SCL
- Microcontroller SDA to LED Matrix SDA

<https://adafru.it/lfy>

<https://adafru.it/lfy>

## Library Setup

To use the LED backpack with your [Adafruit CircuitPython](https://adafru.it/BIM) (<https://adafru.it/BIM>) board you'll need to install the [Adafruit\\_CircuitPython\\_HT16K33](https://adafru.it/u1E) (<https://adafru.it/u1E>) library on your board.

First make sure you are running the [latest version of Adafruit CircuitPython](https://adafru.it/tBa) (<https://adafru.it/tBa>) for your board. Next you'll need to install the necessary libraries to use the hardware--read below and carefully follow the referenced steps to find and install these libraries from [Adafruit's CircuitPython library bundle](https://adafru.it/zdx) (<https://adafru.it/zdx>).

### Bundle Install

For express boards that have extra flash storage, like the Feather/Metro M0 express and Circuit Playground express, you can easily install the necessary libraries with [Adafruit's CircuitPython bundle](https://adafru.it/zdx) (<https://adafru.it/zdx>). This is an all-in-one package that includes the necessary libraries to use the LED backpack display with CircuitPython. For details on installing the bundle, read about [CircuitPython Libraries](https://adafru.it/ABU) (<https://adafru.it/ABU>).

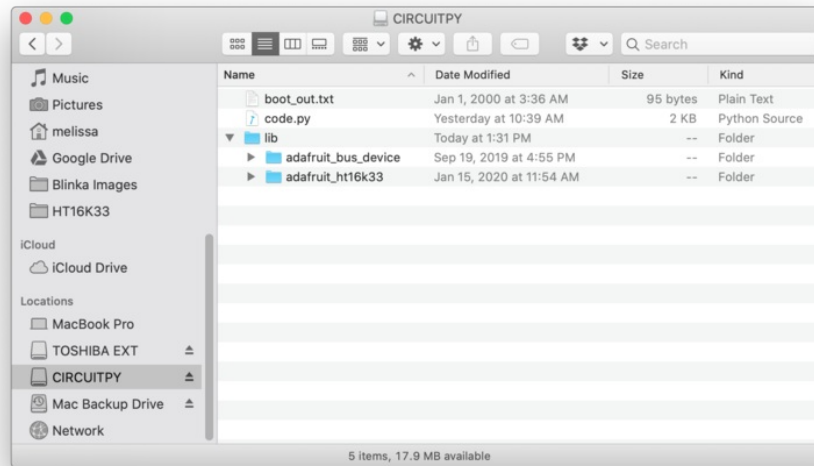
Remember for non-express boards like the Trinket M0, Gemma M0, and Feather/Metro M0 basic you'll need to [manually install the necessary libraries](https://adafru.it/ABU) (<https://adafru.it/ABU>) from the bundle:

- `adafruit_ht16k33`
- `adafruit_bus_device`



If your board supports USB mass storage, like the M0-based boards, then simply drag the files to the board's file system. **Note on boards without external SPI flash, like a Feather M0 or Trinket/Gemma M0, you might run into issues on Mac OSX with hidden files taking up too much space when drag and drop copying, [see this page for a workaround \(https://adafru.it/u1d\)](https://adafru.it/u1d).**

Before continuing make sure your board's **lib** folder or root filesystem has at least the **adafruit\_ht16k33** and **adafruit\_bus\_device** folders/modules copied over.



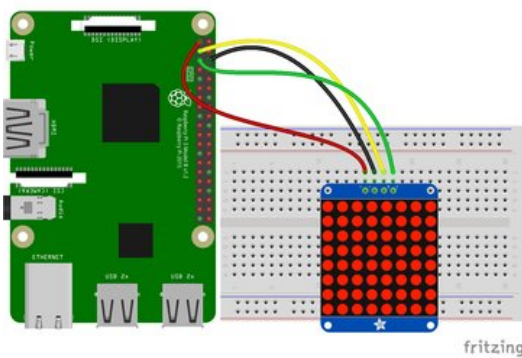
## Wiring

It's easy to use LED Matrices with Python and the [Adafruit CircuitPython HT16K33](https://adafru.it/u1E) (<https://adafru.it/u1E>) library. This library allows you to easily write Python code to control the display.

We'll cover how to wire the LED Matrix to your Raspberry Pi. First assemble your LED Matrix.

Since there's *dozens* of Linux computers/boards you can use we will show wiring for Raspberry Pi. For other platforms, [please visit the guide for CircuitPython on Linux to see whether your platform is supported](https://adafru.it/BSN) (<https://adafru.it/BSN>).

Connect the LED Matrix as shown below to your Raspberry Pi.



- Raspberry Pi 3.3V to LED Matrix VIN
- Raspberry Pi GND to LED Matrix GND
- Raspberry Pi SCL to LED Matrix SCL
- Raspberry Pi SDA to LED Matrix SDA

<https://adafru.it/lfz>

<https://adafru.it/lfz>

## Setup

You'll need to install the Adafruit\_Blinka library that provides the CircuitPython support in Python. This may also require enabling I2C on your platform and verifying you are running Python 3. [Since each platform is a little different, and Linux changes often, please visit the CircuitPython on Linux guide to get your computer ready](https://adafru.it/BSN) (<https://adafru.it/BSN>)!

### Python Installation of HT16K33 Library

Once that's done, from your command line run the following command:

- `pip3 install adafruit-circuitpython-ht16k33`

If your default Python is version 3 you may need to run 'pip' instead. Just make sure you aren't trying to use CircuitPython on Python 2.x, it isn't supported!

If that complains about pip3 not being installed, then run this first to install it:

- `sudo apt-get install python3-pip`

### Pillow Library

We also need PIL, the Python Imaging Library, to allow using text with custom fonts. There are several system libraries that PIL relies on, so installing via a package manager is the easiest way to bring in everything:

- `sudo apt-get install python3-pil`

That's it. You should be ready to go.

## CircuitPython and Python Usage

The following section will show how to control the LED backpack from the board's Python prompt / REPL. You'll walk through how to control the LED display and learn how to use the CircuitPython module built for the display.

First [connect to the board's serial REPL \(https://adafru.it/Awz\)](https://adafru.it/Awz) so you are at the CircuitPython >>> prompt.

### Initialization

First you'll need to initialize the I2C bus for your board. It's really easy, first import the necessary modules. In this case, we'll use `board` and `Matrix8x8`.

Then just use `board.I2C()` to create the I2C instance using the default SCL and SDA pins (which will be marked on the boards pins if using a Feather or similar Adafruit board).

Then to initialize the matrix, you just pass `i2c` in.

```
import board
from adafruit_ht16k33.matrix import Matrix8x8

i2c = board.I2C()
matrix = Matrix8x8(i2c)
```

If you bridged the address pads on the back of the barcode, you could pass in the address. The addresses for the HT16K33 can range between 0x70 and 0x77 depending on which pads you have bridged, with 0x70 being used if you haven't bridged any of them. For instance, if you bridge only the **A0** pad, you would use `0x71` like this:

```
matrix = Matrix8x8(i2c, address=0x71)
```

### Setting Individual Pixels

To set individual bars to specific colors, you simply treat the `matrix` object as a multidimensional list and set it to 1.

```
matrix[0, 0] = 1
matrix[4, 4] = 1
matrix[7, 7] = 1
```

### Filling the Entire Matrix

To fill the entire matrix, just use the `fill()` function and pass in either 0 or 1 depending on whether you want all pixels off or on. For instance, if you wanted to set everything to on, you would use:

```
matrix.fill(1)
```

### Shifting the Matrix

To shift the pixels on the matrix, there are 5 functions you can use. The main function, called `shift()`, is used to shift the pixels, up, down, left, right, or even diagonally. By passing a positive number, it will shift the pixels right/up and passing a negative number will shift them left/down. For instance:

```
matrix.shift(2, 0) # shift pixels to the right by 2
matrix.shift(-1, 0) # shift pixels to the left by 1
matrix.shift(0, -3) # shift pixels down by 3
matrix.shift(-2, 2) # shift pixels left by 2 and up by 2
```

You can pass `True` as a third parameter to loop all the pixels that get shifted off over to the other side.

```
matrix.shift(2, 0, True) # loop pixels to the right by 2
matrix.shift(-1, 0, True) # loop pixels to the left by 1
matrix.shift(0, -3, True) # loop pixels down by 3
matrix.shift(-2, 2, True) # loop pixels left by 2 and up by 2
```

Additionally, there are a few convenience functions that will shift the pixels by one. These can also be passed a value of `True` to loop the pixels.

```
matrix.shift_up() # Shift pixels up
matrix.shift_left() # Shift pixels left
matrix.shift_down() # Shift pixels down
matrix.shift_right() # Shift pixels right
matrix.shift_up(True) # Loop pixels up
matrix.shift_left(True) # Loop pixels left
matrix.shift_down(True) # Loop pixels down
matrix.shift_right(True) # Loop pixels right
```

## Displaying an Image (Pillow Only)

Additionally, when using with the Raspberry Pi, you can use the Pillow library to display an image to the Matrix. The image will need to be the same exact size as the Matrix. In this case, it should be **8x8** pixels. If your image was called **myimage.png**, you would use something like this:

```
import board
from PIL import Image
from adafruit_ht16k33 import matrix

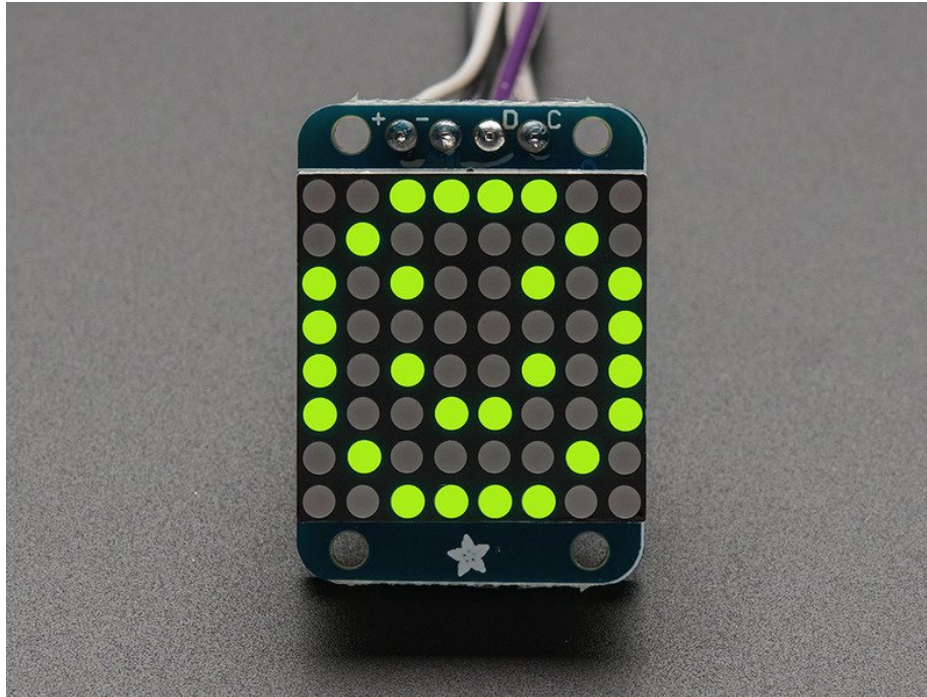
matrix = matrix.Matrix8x8(board.I2C())

image = Image.open("myimage.png")
matrix.image(image)
```



## 0.8" 8x8 Matrix

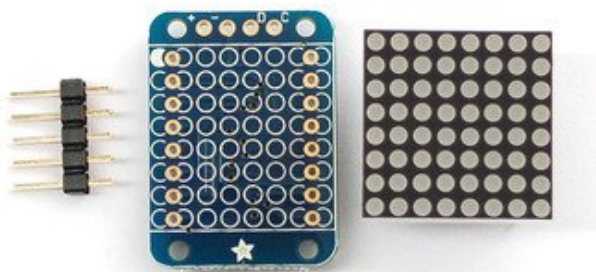
This version of the LED backpack is designed for these very cute miniature 8x8 matrices. They measure only 0.8"x0.8" so its a shame to use a massive array of chips to control it. This backpack solves the annoyance of using 16 pins or a bunch of chips by having an I2C constant-current matrix controller sit neatly on the back of the PCB. The controller chip takes care of everything, drawing all 64 LEDs in the background. All you have to do is write data to it using the 2-pin I2C interface. There are two address select pins so you can select one of 4 addresses to control up to 4 of these on a single 2-pin I2C bus (as well as whatever other I2C chips or sensors you like). The driver chip can 'dim' the entire display from 1/16 brightness up to full brightness in 1/16th steps. It cannot dim individual LEDs, only the entire display at once.



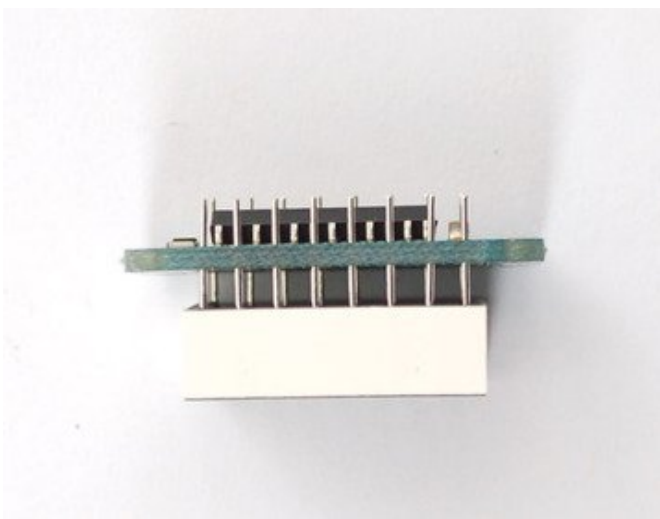
## Assembly



These instructions apply to the 0.8" Matrix only! If you have a Bi-Color or 1.2" square matrix, follow the links on the left side of the page.



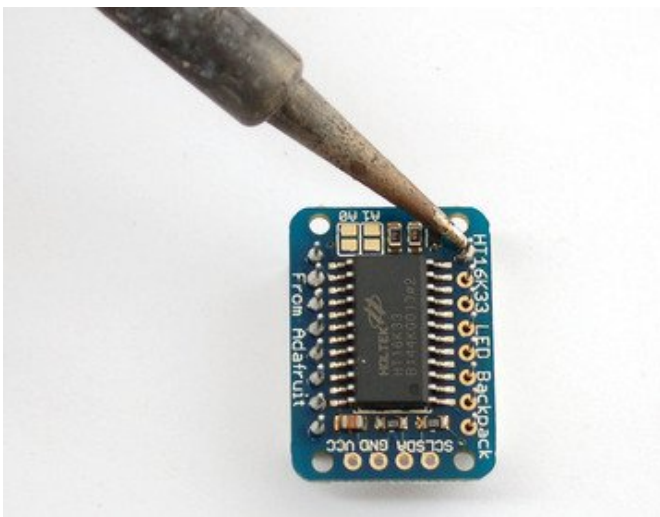
When you buy a pack from Adafruit, it comes with the fully tested and assembled backpack as well as a 8x8 matrix in one of the colors we provide (say, red, yellow or green). You'll need to solder the matrix onto the backpack but it's an easy task.



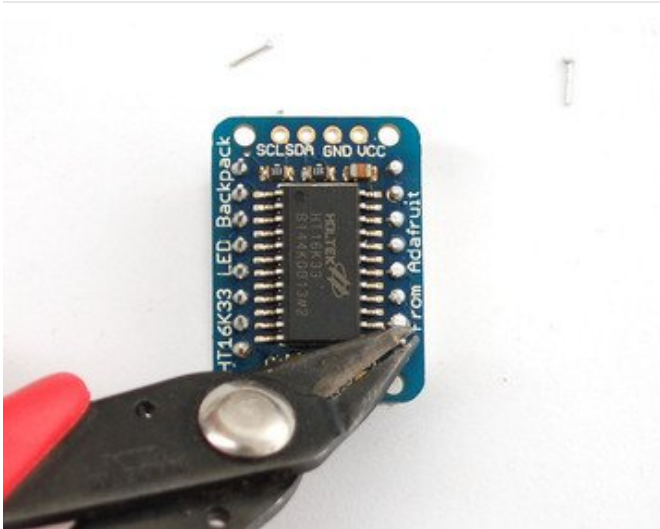
Remove the parts from packaging and place the LED matrix **OVER** the silkscreen side. It can go 'either way' - the matrix is symmetric so as long as it goes onto the front it will work in any orientation. Do not solder the matrix over the chip on the back of the backpack - it will not work then!



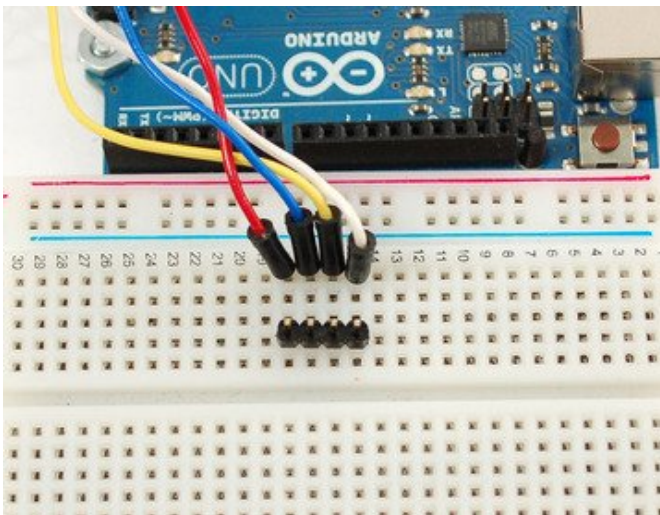
Turn the backpack over so its sitting flat on the matrix.



Solder all 16 pins.

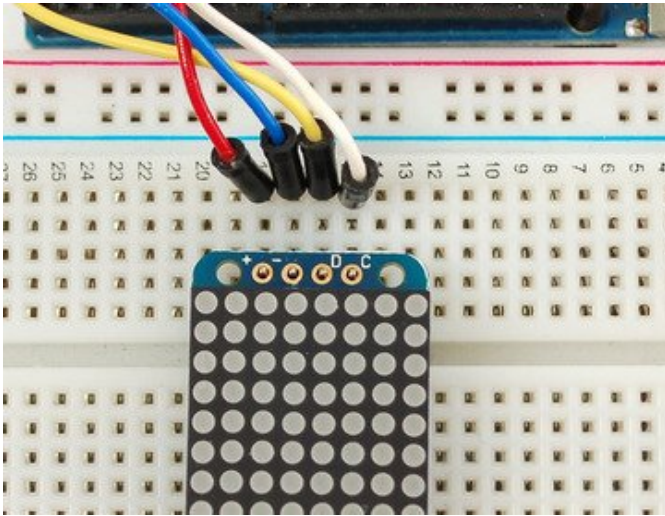


Clip the long pins.

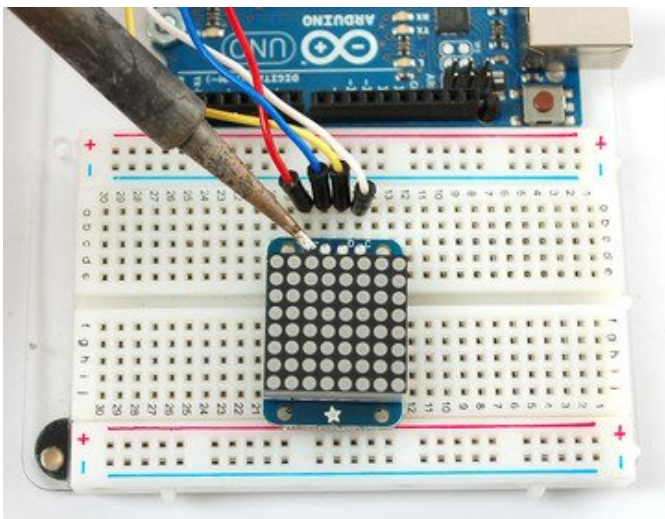


Now you're ready to wire it up to a microcontroller. We'll assume you want to use a 4pin header. You can also of course solder wires directly. Place a 4-pin piece of header with the LONG pins down into the breadboard.





Place the soldered backpack on top of the header.



Solder 'em!

That's it! now you're ready to run the firmware!



## Arduino Wiring and Setup

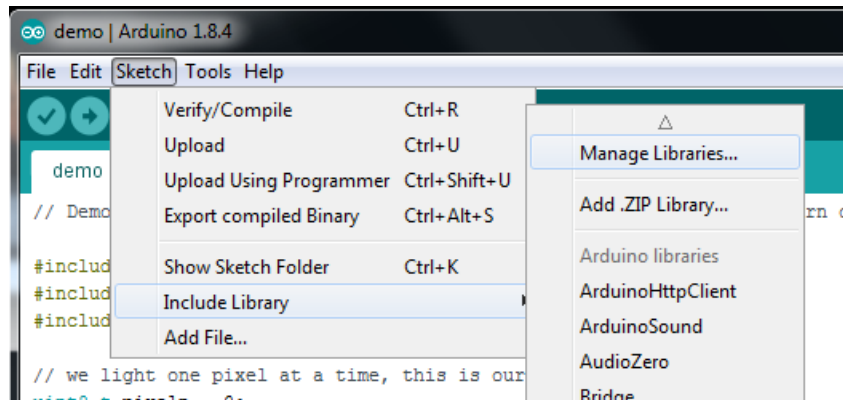
We wrote a basic library to help you work with the mini 8x8 matrix backpack. The library is written for the Arduino and will work with any Arduino as it just uses the I2C pins. The code is very portable and can be easily adapted to any I2C-capable micro.

Wiring to the matrix is really easy

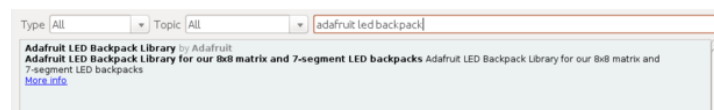
- Connect **CLK** to the I2C clock - on Arduino UNO thats Analog #5, on the Leonardo its Digital #3, on the Mega its digital #21
- Connect **DAT** to the I2C data - on Arduino UNO thats Analog #4, on the Leonardo its Digital #2, on the Mega its digital #20
- Connect **GND** to common ground
- Connect **VCC+** to power - 5V is best but 3V also seems to work for 3V microcontrollers.

Next, download the **Adafruit LED Backpack** library and the **Adafruit GFX** library from the Arduino library manager.

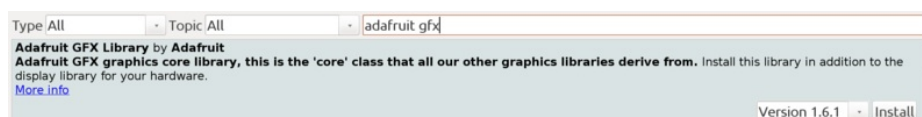
Open up the Arduino library manager:



Search for the **Adafruit LED Backpack** library and install it



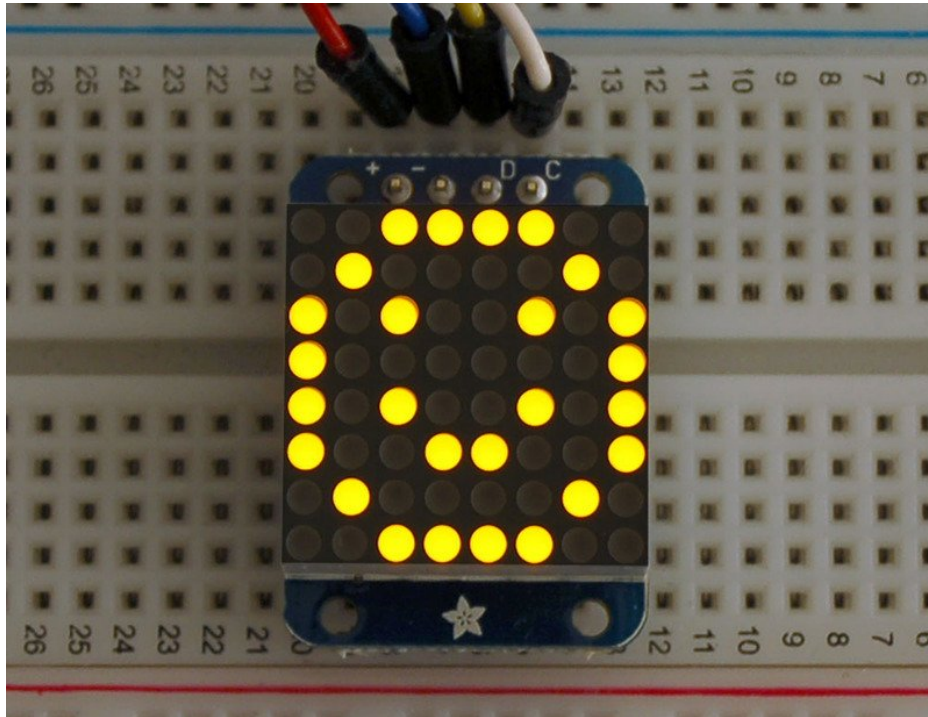
Search for the **Adafruit GFX** library and install it



Once you've restarted you should be able to select the **File->Examples->Adafruit\_LEDBackpack->matrix88** example sketch. Upload it to your Arduino as usual. You should see a basic test program that goes through a bunch of different drawing routines

We also have a great tutorial on Arduino library installation at:

<http://learn.adafruit.com/adafruit-all-about-arduino-libraries-install-use> (<https://adafru.it/aYM>)



Once you're happy that the matrix works, you can write your own sketches. The 8x8 matrix supports everything the Adafruit GFX library - drawing pixels, lines, rectangles, circles, triangles, roundrects, and small bitmaps. [For more details check out the GFX page which will detail all of the GFX routines \(https://adafru.it/aPx\).](https://adafru.it/aPx)

All the drawing routines only change the display memory kept by the Arduino. Don't forget to call **writeDisplay()** after drawing to 'save' the memory out to the matrix via I2C.

There are also a few small routines that are special to the matrix:

- **setBrightness(*brightness*)**- will let you change the overall brightness of the entire display. 0 is least bright, 15 is brightest and is what is initialized by the display when you start
- **blinkRate(*rate*)** - You can blink the entire display. 0 is no blinking. 1, 2 or 3 is for display blinking.

# CircuitPython Wiring and Setup

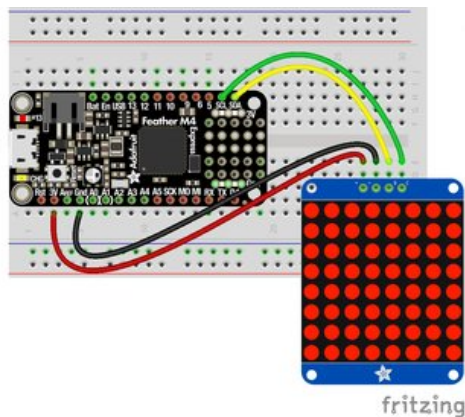
## Wiring

It's easy to use LED Matrices with CircuitPython and the [Adafruit CircuitPython HT16K33](https://adafru.it/u1E) (<https://adafru.it/u1E>) library. This module allows you to easily write CircuitPython code to control the display.

You can use this sensor with any CircuitPython microcontroller board.

We'll cover how to wire the LED Matrix to your CircuitPython microcontroller board. First assemble your LED Matrix.

Connect the LED Matrix to your microcontroller board as shown below.



- Microcontroller 3V to LED Matrix VIN
- Microcontroller GND to LED Matrix GND
- Microcontroller SCL to LED Matrix SCL
- Microcontroller SDA to LED Matrix SDA

<https://adafru.it/lfy>

<https://adafru.it/lfy>

## Library Setup

To use the LED backpack with your [Adafruit CircuitPython](https://adafru.it/BIM) (<https://adafru.it/BIM>) board you'll need to install the [Adafruit\\_CircuitPython\\_HT16K33](https://adafru.it/u1E) (<https://adafru.it/u1E>) library on your board.

First make sure you are running the [latest version of Adafruit CircuitPython](https://adafru.it/tBa) (<https://adafru.it/tBa>) for your board. Next you'll need to install the necessary libraries to use the hardware--read below and carefully follow the referenced steps to find and install these libraries from [Adafruit's CircuitPython library bundle](https://adafru.it/zdx) (<https://adafru.it/zdx>).

### Bundle Install

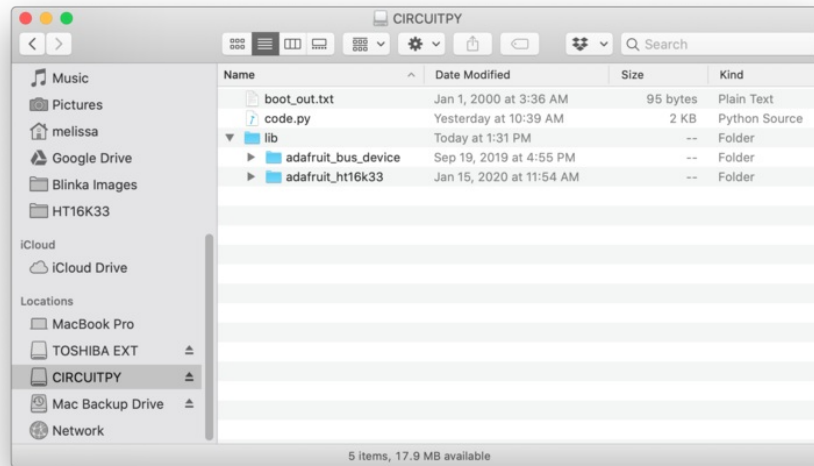
For express boards that have extra flash storage, like the Feather/Metro M0 express and Circuit Playground express, you can easily install the necessary libraries with [Adafruit's CircuitPython bundle](https://adafru.it/zdx) (<https://adafru.it/zdx>). This is an all-in-one package that includes the necessary libraries to use the LED backpack display with CircuitPython. For details on installing the bundle, read about [CircuitPython Libraries](https://adafru.it/ABU) (<https://adafru.it/ABU>).

Remember for non-express boards like the Trinket M0, Gemma M0, and Feather/Metro M0 basic you'll need to [manually install the necessary libraries](https://adafru.it/ABU) (<https://adafru.it/ABU>) from the bundle:

- `adafruit_ht16k33`
- `adafruit_bus_device`

If your board supports USB mass storage, like the M0-based boards, then simply drag the files to the board's file system. **Note on boards without external SPI flash, like a Feather M0 or Trinket/Gemma M0, you might run into issues on Mac OSX with hidden files taking up too much space when drag and drop copying, [see this page for a workaround \(https://adafru.it/u1d\)](https://adafru.it/u1d).**

Before continuing make sure your board's **lib** folder or root filesystem has at least the **adafruit\_ht16k33** and **adafruit\_bus\_device** folders/modules copied over.



## Python Wiring and Setup

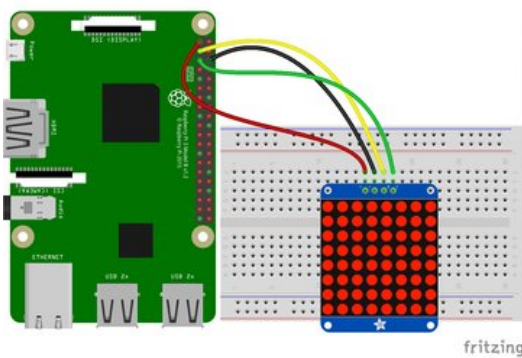
### Wiring

It's easy to use LED Matrices with Python and the [Adafruit CircuitPython HT16K33](https://adafru.it/u1E) (<https://adafru.it/u1E>) library. This library allows you to easily write Python code to control the display.

We'll cover how to wire the LED Matrix to your Raspberry Pi. First assemble your LED Matrix.

Since there's *dozens* of Linux computers/boards you can use we will show wiring for Raspberry Pi. For other platforms, [please visit the guide for CircuitPython on Linux to see whether your platform is supported](https://adafru.it/BSN) (<https://adafru.it/BSN>).

Connect the LED Matrix as shown below to your Raspberry Pi.



- Raspberry Pi 3.3V to LED Matrix VIN
- Raspberry Pi GND to LED Matrix GND
- Raspberry Pi SCL to LED Matrix SCL
- Raspberry Pi SDA to LED Matrix SDA

<https://adafru.it/lfz>

<https://adafru.it/lfz>

### Setup

You'll need to install the Adafruit\_Blinka library that provides the CircuitPython support in Python. This may also require enabling I2C on your platform and verifying you are running Python 3. [Since each platform is a little different, and Linux changes often, please visit the CircuitPython on Linux guide to get your computer ready](https://adafru.it/BSN) (<https://adafru.it/BSN>)!

#### Python Installation of HT16K33 Library

Once that's done, from your command line run the following command:

- `pip3 install adafruit-circuitpython-ht16k33`

If your default Python is version 3 you may need to run 'pip' instead. Just make sure you aren't trying to use CircuitPython on Python 2.x, it isn't supported!

If that complains about pip3 not being installed, then run this first to install it:

- `sudo apt-get install python3-pip`

#### Pillow Library



We also need PIL, the Python Imaging Library, to allow using text with custom fonts. There are several system libraries that PIL relies on, so installing via a package manager is the easiest way to bring in everything:

- `sudo apt-get install python3-pil`

That's it. You should be ready to go.

## CircuitPython and Python Usage

The following section will show how to control the LED backpack from the board's Python prompt / REPL. You'll walk through how to control the LED display and learn how to use the CircuitPython module built for the display.

First [connect to the board's serial REPL \(https://adafru.it/Awz\)](https://adafru.it/Awz) so you are at the CircuitPython >>> prompt.

### Initialization

First you'll need to initialize the I2C bus for your board. It's really easy, first import the necessary modules. In this case, we'll use `board` and `Matrix8x8`.

Then just use `board.I2C()` to create the I2C instance using the default SCL and SDA pins (which will be marked on the boards pins if using a Feather or similar Adafruit board).

Then to initialize the matrix, you just pass `i2c` in.

```
import board
from adafruit_ht16k33.matrix import Matrix8x8

i2c = board.I2C()
matrix = Matrix8x8(i2c)
```

If you bridged the address pads on the back of the barcode, you could pass in the address. The addresses for the HT16K33 can range between 0x70 and 0x77 depending on which pads you have bridged, with 0x70 being used if you haven't bridged any of them. For instance, if you bridge only the **A0** pad, you would use `0x71` like this:

```
matrix = Matrix8x8(i2c, address=0x71)
```

### Setting Individual Pixels

To set individual bars to specific colors, you simply treat the `matrix` object as a multidimensional list and set it to 1.

```
matrix[0, 0] = 1
matrix[4, 4] = 1
matrix[7, 7] = 1
```

### Filling the Entire Matrix

To fill the entire matrix, just use the `fill()` function and pass in either 0 or 1 depending on whether you want all pixels off or on. For instance, if you wanted to set everything to on, you would use:

```
matrix.fill(1)
```

### Shifting the Matrix

To shift the pixels on the matrix, there are 5 functions you can use. The main function, called `shift()`, is used to shift the pixels, up, down, left, right, or even diagonally. By passing a positive number, it will shift the pixels right/up and passing a negative number will shift them left/down. For instance:

```
matrix.shift(2, 0) # shift pixels to the right by 2
matrix.shift(-1, 0) # shift pixels to the left by 1
matrix.shift(0, -3) # shift pixels down by 3
matrix.shift(-2, 2) # shift pixels left by 2 and up by 2
```

You can pass `True` as a third parameter to loop all the pixels that get shifted off over to the other side.

```
matrix.shift(2, 0, True) # loop pixels to the right by 2
matrix.shift(-1, 0, True) # loop pixels to the left by 1
matrix.shift(0, -3, True) # loop pixels down by 3
matrix.shift(-2, 2, True) # loop pixels left by 2 and up by 2
```

Additionally, there are a few convenience functions that will shift the pixels by one. These can also be passed a value of `True` to loop the pixels.

```
matrix.shift_up() # Shift pixels up
matrix.shift_left() # Shift pixels left
matrix.shift_down() # Shift pixels down
matrix.shift_right() # Shift pixels right
matrix.shift_up(True) # Loop pixels up
matrix.shift_left(True) # Loop pixels left
matrix.shift_down(True) # Loop pixels down
matrix.shift_right(True) # Loop pixels right
```

## Displaying an Image (Pillow Only)

Additionally, when using with the Raspberry Pi, you can use the Pillow library to display an image to the Matrix. The image will need to be the same exact size as the Matrix. In this case, it should be **8x8** pixels. If your image was called **myimage.png**, you would use something like this:

```
import board
from PIL import Image
from adafruit_ht16k33 import matrix

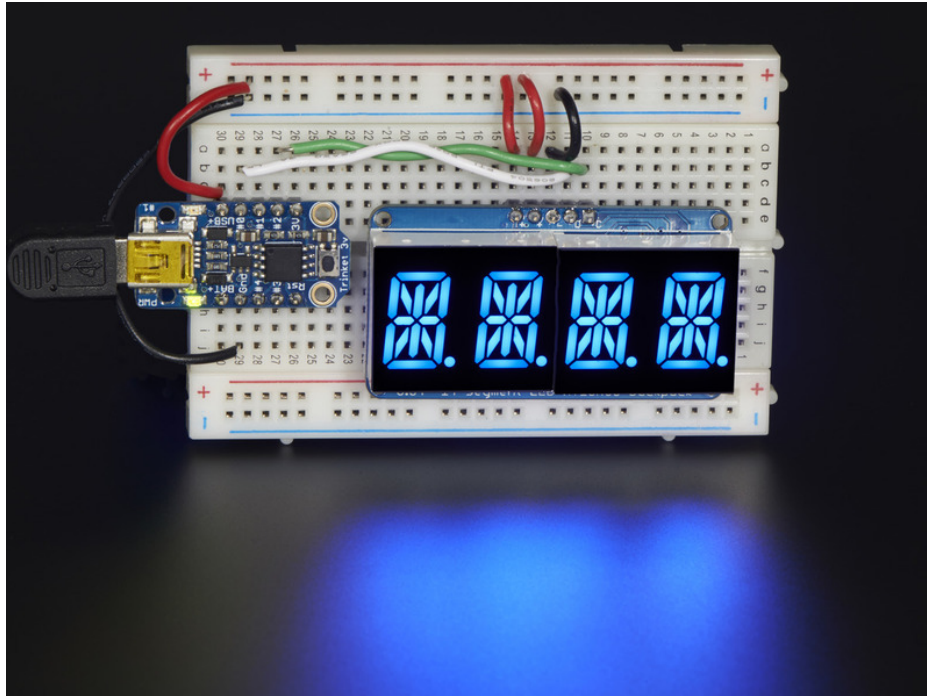
matrix = matrix.Matrix8x8(board.I2C())

image = Image.open("myimage.png")
matrix.image(image)
```

## 0.54" Alphanumeric

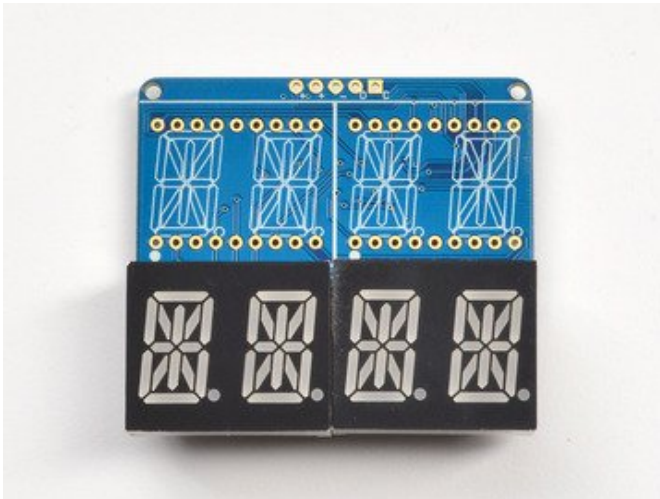
This version of the LED backpack is designed for two dual 14-segment "Alphanumeric" displays. These 14-segment displays normally require 18 pins (4 'characters' and 14 total segments each) This backpack solves the annoyance of using 18 pins or a bunch of chips by having an I2C constant-current matrix controller sit neatly on the back of the PCB. The controller chip takes care of everything, drawing all the LEDs in the background. All you have to do is write data to it using the 2-pin I2C interface.

There are three address select pins so you can select one of 8 addresses to control up to 8 of these on a single 2-pin I2C bus (as well as whatever other I2C chips or sensors you like). The driver chip can 'dim' the entire display from 1/16 brightness up to full brightness in 1/16th steps. It cannot dim individual LEDs, only the entire display at once.

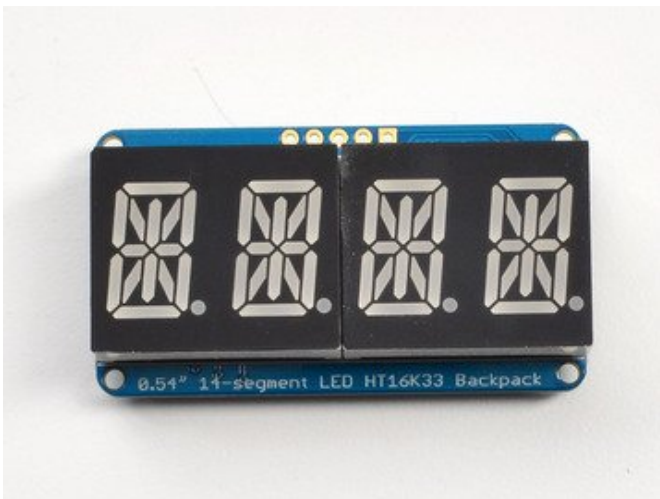


## Assembly

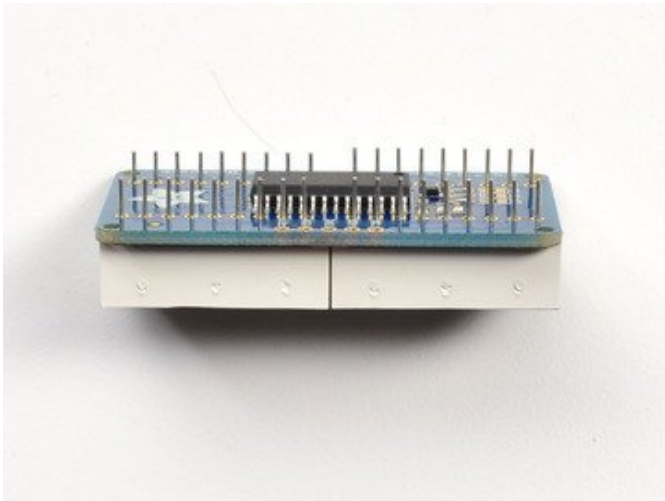
### Attaching the Backpack



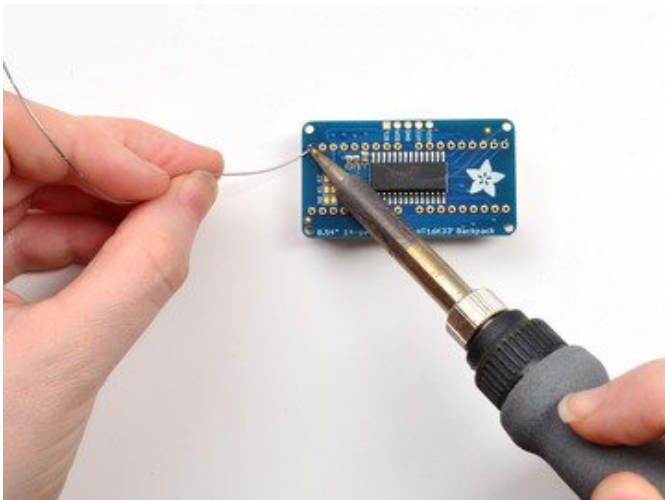
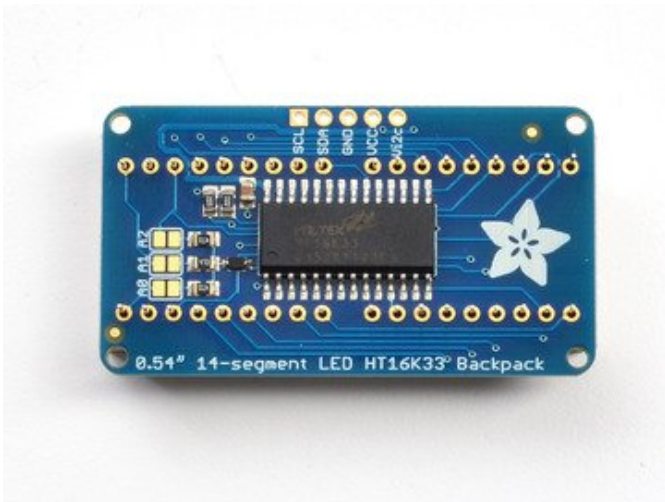
When you buy a pack from Adafruit, it comes with the fully tested and assembled backpack as well as two dual 14-segment display in one of the colors we provide (say, red, yellow, blue or green). You'll need to solder the matrix onto the backpack but it's an easy task.



Remove the parts from packaging and place the LED matrices OVER the silkscreen side. **DO NOT PUT THE DISPLAY ON UPSIDE DOWN OR IT WONT WORK!!** Check the image below to make sure the 'decimal point' dots are on the bottom, matching the silkscreen.

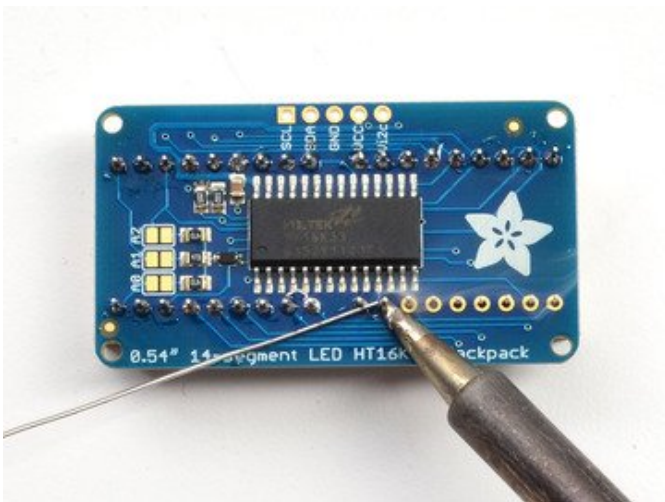
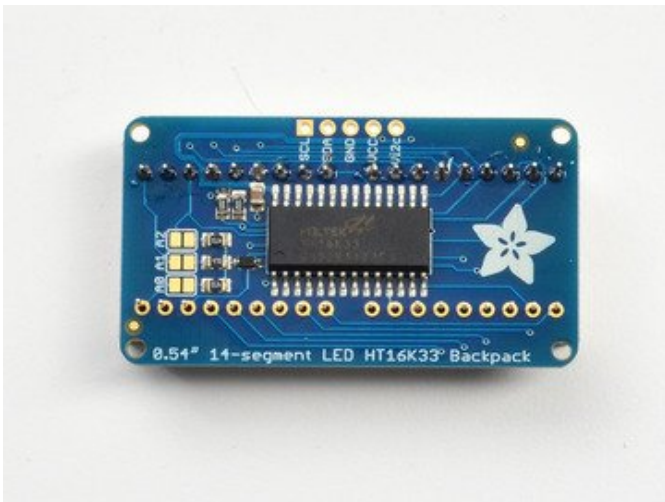
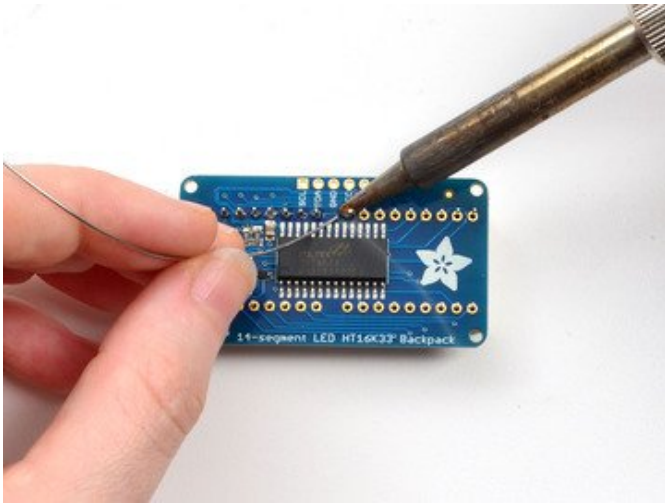


Turn the backpack over so it is sitting flat on the matrix.

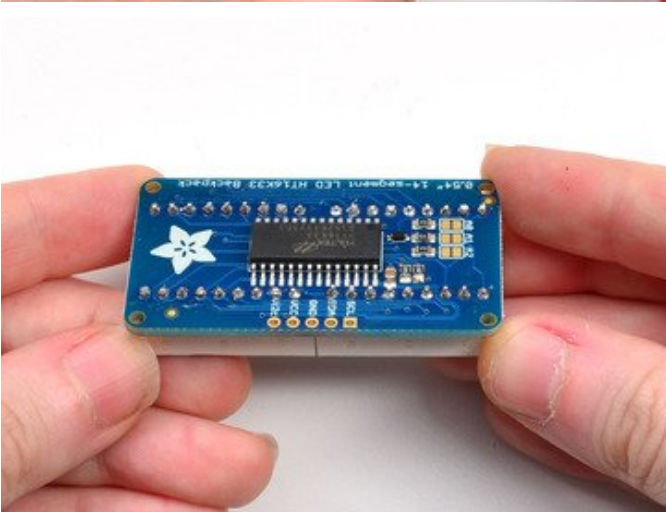
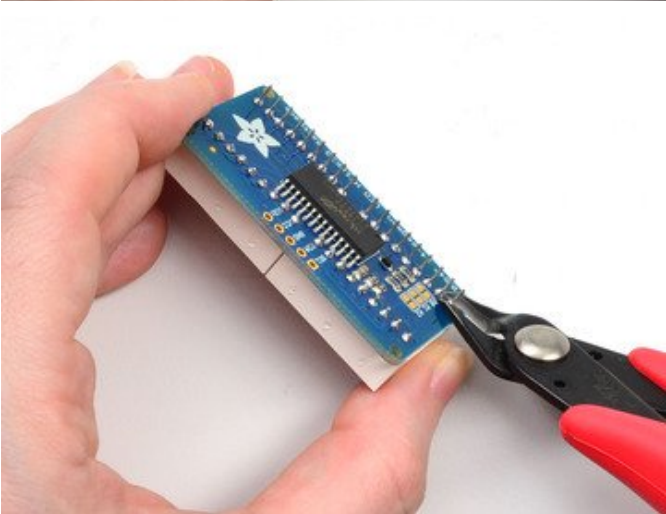


Solder all of the pins!





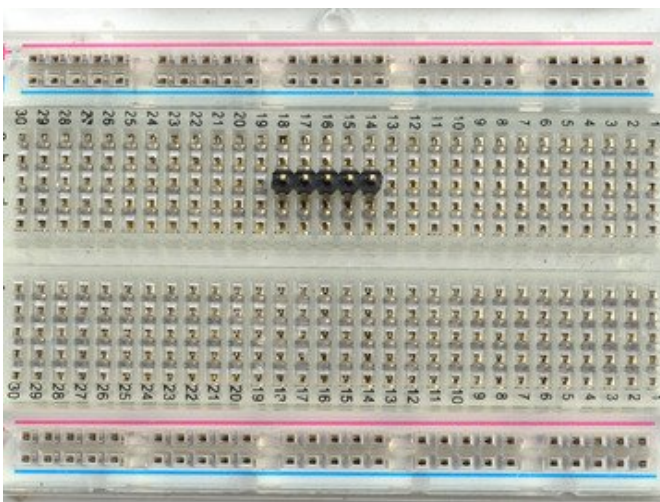
Clip the long pins.





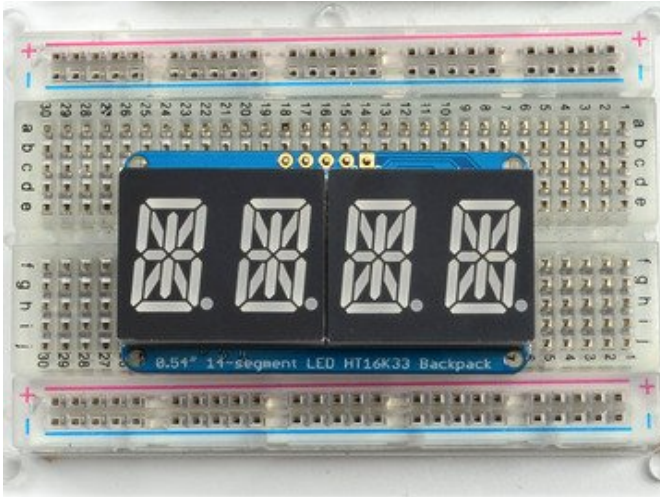
Check your work, making sure each pin is nicely soldered, and there's no cold solder joints or shorted pins

## Attaching Header



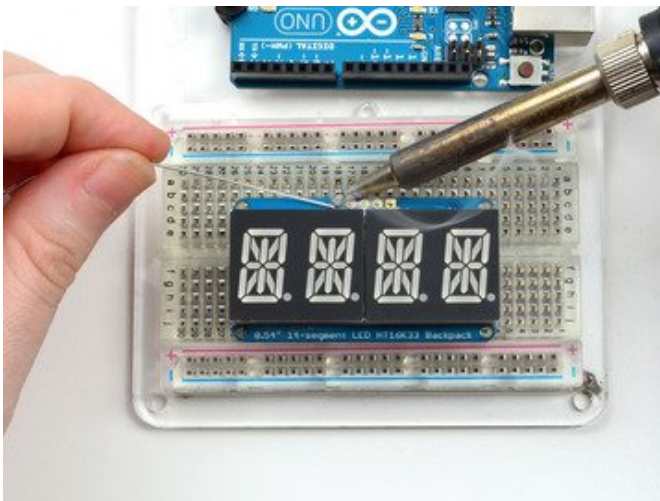
Prepare the header strip:

Cut the strip to length if necessary. It will be easier to solder if you insert it into a breadboard - **long pins down**



Add the Backpack:

Place the backpack board over the pins so that the short pins poke through the breakout pads



Solder all 5 pins!

That's it! now you're ready to run the firmware on your Arduino!

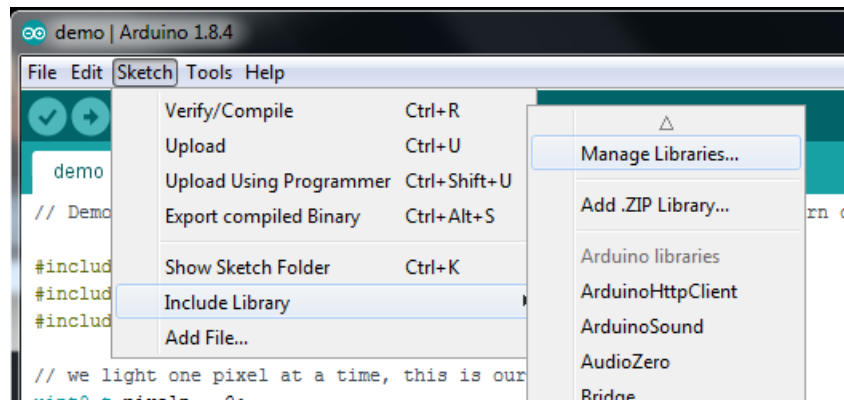
## Arduino Wiring and Setup

### Downloading the Arduino Library

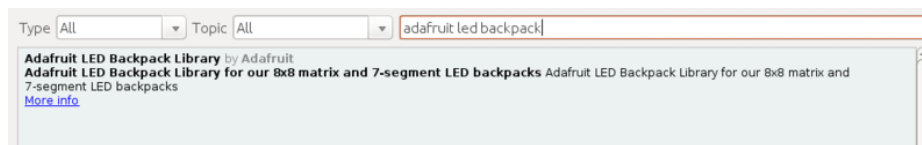
We wrote a basic library to help you work with the alphanumeric backpack. The library is written for the Arduino and will work with any Arduino as it just uses the I2C pins. The code is very portable and can be easily adapted to any I2C-capable micro.

Begin by downloading our [Adafruit LED Backpack library \(https://adafru.it/aLI\)](https://adafru.it/aLI) and the [Adafruit GFX library \(https://adafru.it/aJa\)](https://adafru.it/aJa) from the Arduino library manager.

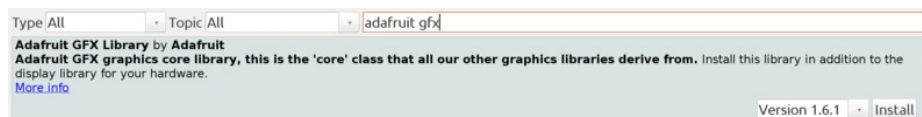
Open up the Arduino library manager:



Search for the **Adafruit LED Backpack** library and install it



Search for the **Adafruit GFX** library and install it



We also have a great tutorial on Arduino library installation at:

<http://learn.adafruit.com/adafruit-all-about-arduino-libraries-install-use> (<https://adafru.it/aYM>)

### Wiring!

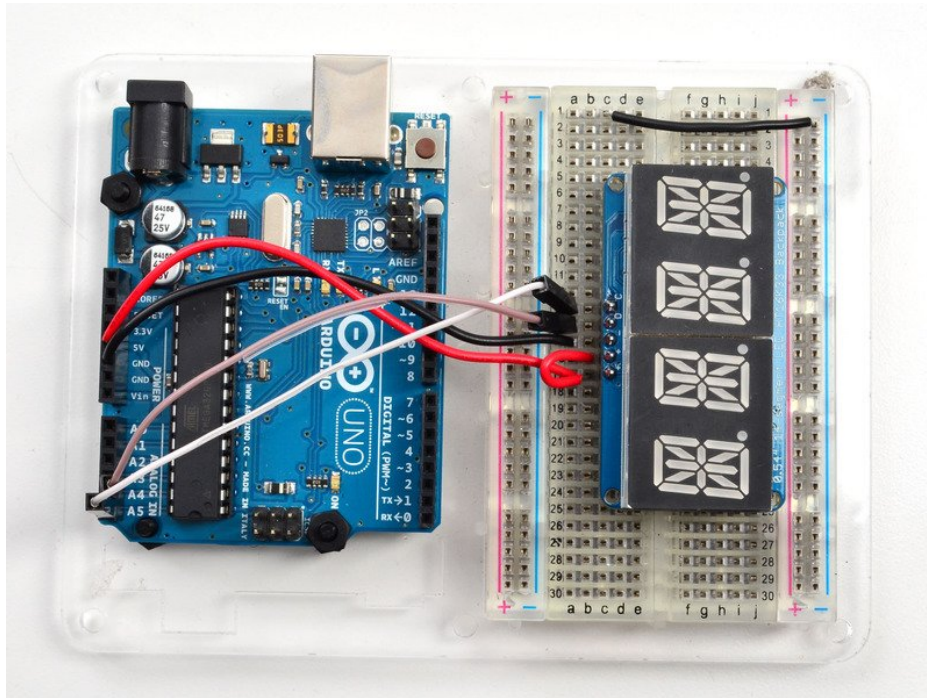
Nex up, let's wire it up to an Arduino. We'll be using an Arduino.

- Connect **CLK** to the I2C clock - on Arduino UNO thats Analog #5, on the Leonardo it's Digital #3, on the Mega it's digital #21
- Connect **DAT** to the I2C data - on Arduino UNO thats Analog #4, on the Leonardo it's Digital #2, on the Mega it's digital #20
- Connect **GND** to common ground



- Connect **VCC+** to power - 5V is best but 3V will work if that's all you've got (it will be dimmer)
- Connect **Vi2c** to your microcontroller's logic level (3-5V) - If you're using an Arduino, this is almost certainly 5V. If its a 3V Arduino such as a Due, connect it to 3V

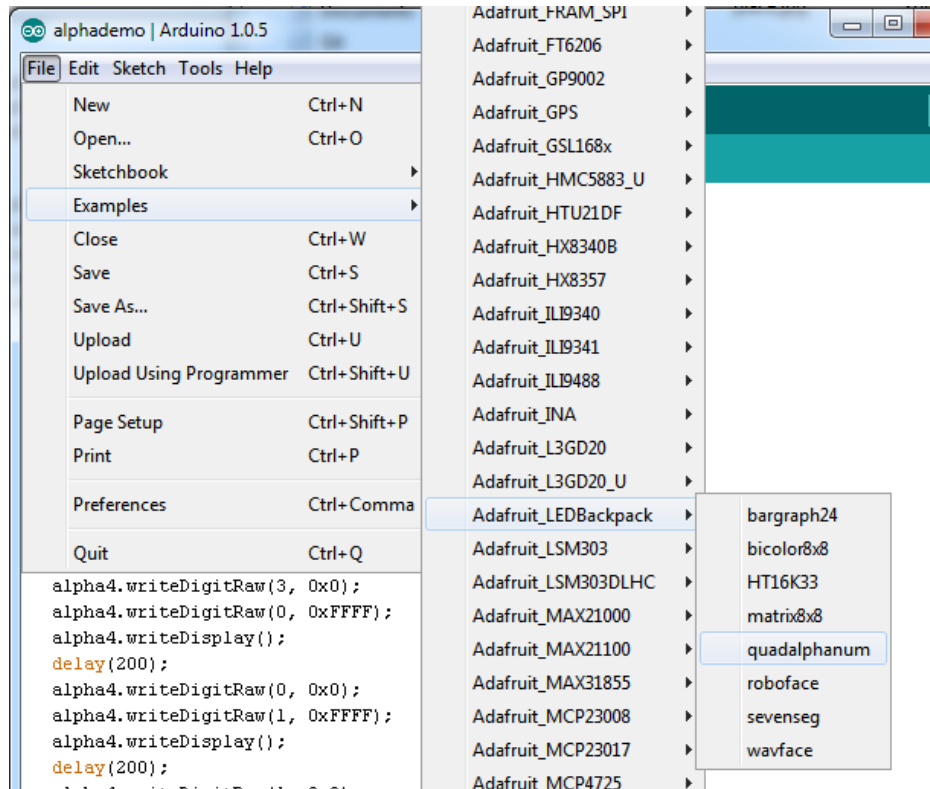
Both **Vi2c** and **Vcc** MUST be connected to 3 to 5VDC! Vcc is for the LED driver power, Vi2c is what sets the logic level for communication to the chip.



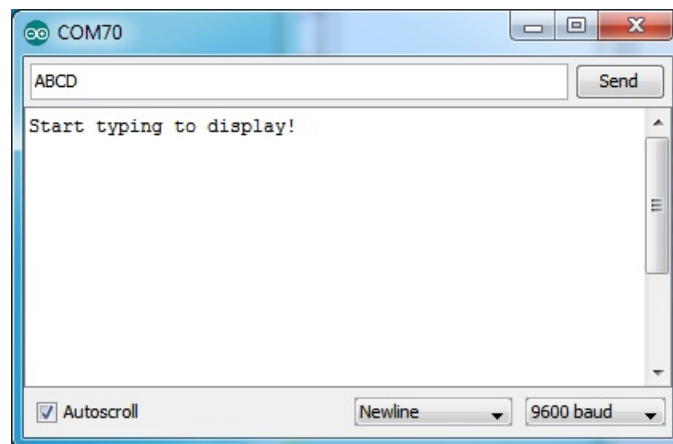
## Load Demo

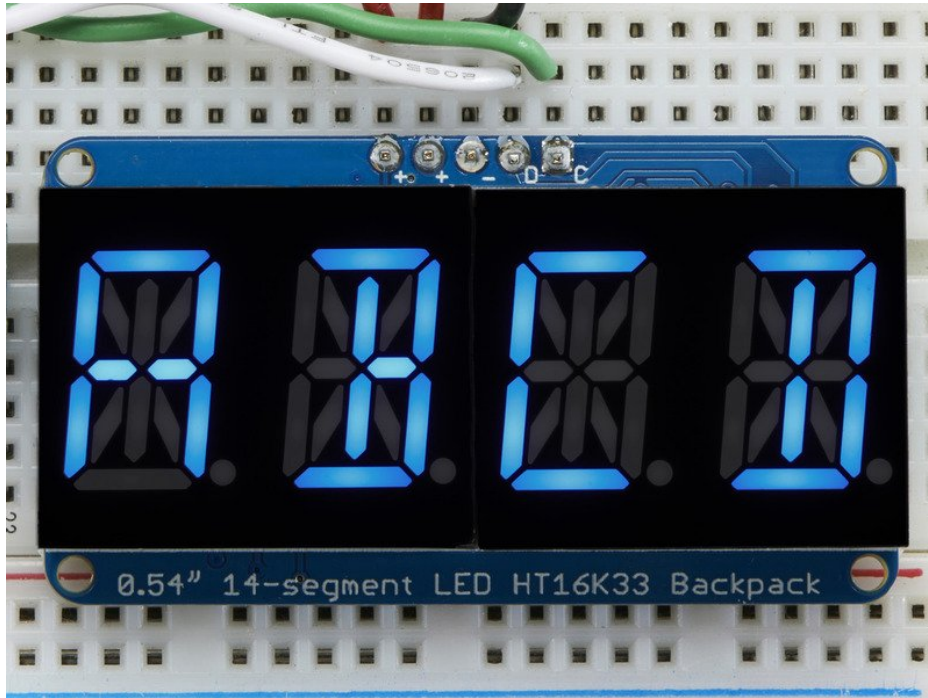
Restart the Arduino IDE and load up the File->Adafruit\_LEDBackpack->quadalphanum demo





Upload to your Arduino, and open up the Serial console at 9600 baud speed. You'll see each digit light up all the segments, then the display will scroll through the 'font table' showing every character that it knows how to display. Finally, you'll get a notice to start typing into the serial console. Type a message and hit return, you'll see it scroll onto the display!





## Library Reference

For the quad displays, we have a special object that can handle ascii data for easy printing.

You can create the object with

```
Adafruit_AlphaNum4 alpha4 = Adafruit_AlphaNum4();
```

There's no arguments or pins because the backpacks use the fixed I2C pins.

By default, the address is 0x70, but you can pass in the I2C address used when you initialize the display with **begin**

```
alpha4.begin(0x70); // pass in the address
```

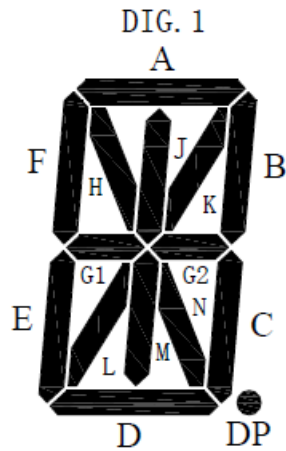
Next up, the segments can be turned on/off for each digit by writing the 'raw' bitmap you want, for example, all the LEDs off on digit #3 is

```
alpha4.writeDigitRaw(3, 0x0);
```

All the segments on for digit #0 is

```
alpha4.writeDigitRaw(0, 0x3FFF);
```

This is the segment map:



the 16 bit digit you pass in for raw image has this mapping:

```
0 DP N M L K J H G2 G1 F E D C B A
```

The first bit isn't used, you can make it 0 or 1

To turn on just the **A** segment, use 0x0001

To turn on just the **G1** segment, use 0x0040

## ASCII data

If you're just looking to print 'text' you can use our font table, just pass in an ASCII character!

For example, to set digit #0 to **A** call:

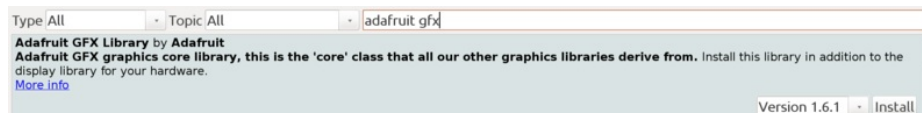
```
alpha4.writeDigitAscii(0, 'A')
```

## Writing Data

Don't forget to 'write' the data to the display with

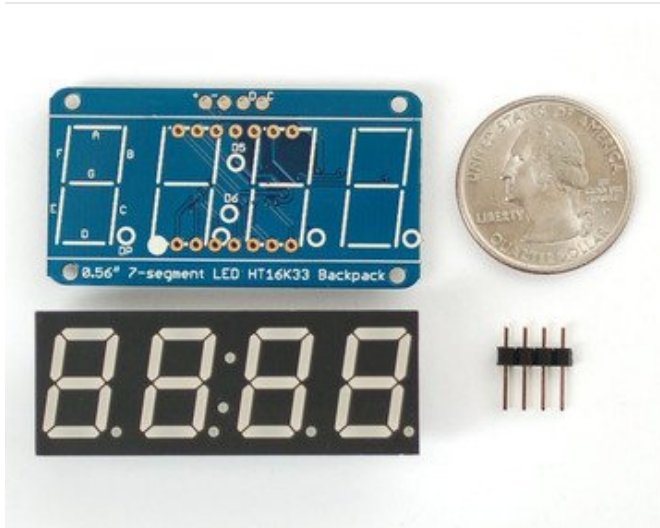
```
alpha4.writeDisplay();
```

That's what actually 'sets' the data onto the LEDs!



## 0.56" 7-Segment Backpack

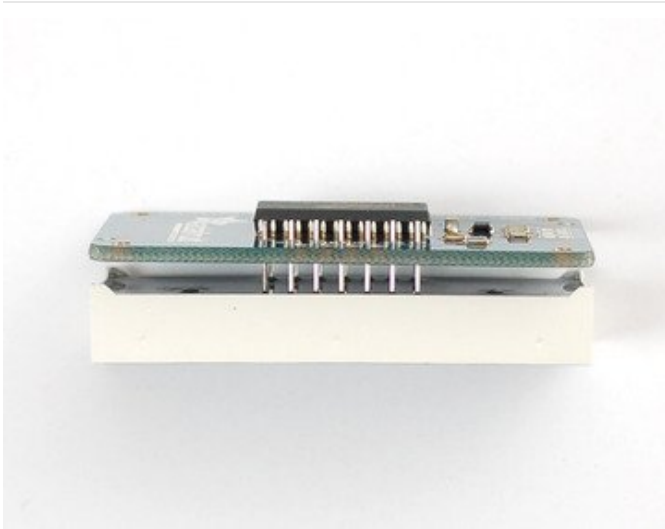
This version of the LED backpack is designed for these big bright 7-segment displays. These 7-segment displays normally require 13 pins (5 'characters' and 8 total segments each) This backpack solves the annoyance of using 13 pins or a bunch of chips by having an I2C constant-current matrix controller sit neatly on the back of the PCB. The controller chip takes care of everything, drawing all the LEDs in the background. All you have to do is write data to it using the 2-pin I2C interface. There are three address select pins so you can select one of 8 addresses to control up to 8 of these on a single 2-pin I2C bus (as well as whatever other I2C chips or sensors you like). The driver chip can 'dim' the entire display from 1/16 brightness up to full brightness in 1/16th steps. It cannot dim individual LEDs, only the entire display at once.



When you buy a pack from Adafruit, it comes with the fully tested and assembled backpack as well as a 7-segment display in one of the colors we provide (say, red, yellow, blue or green). You'll need to solder the matrix onto the backpack but it's an easy task.



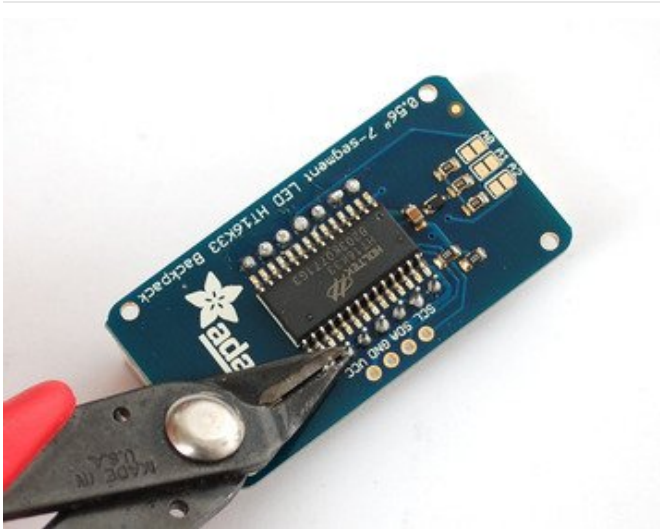
Remove the parts from packaging and place the LED matrix **OVER** the silkscreen side. **DO NOT PUT THE DISPLAY ON UPSIDE DOWN OR IT WON'T WORK!!** Check the image below to make sure the 'decimal point' dots are on the bottom, matching the silkscreen.



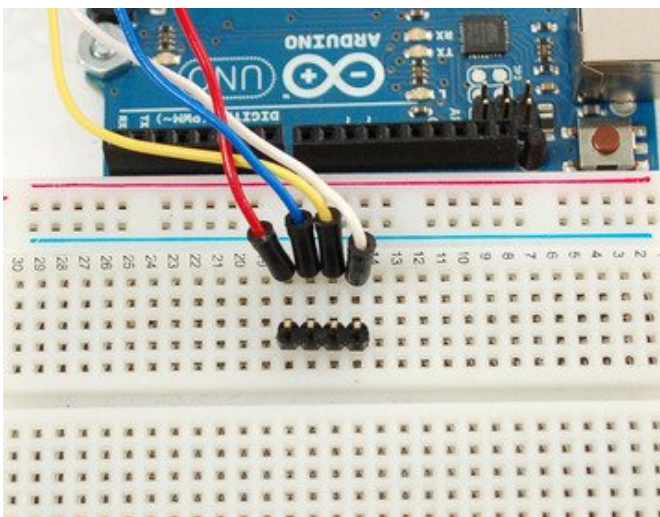
Turn the backpack over so it is sitting flat on the matrix.



Solder all 14 pins.

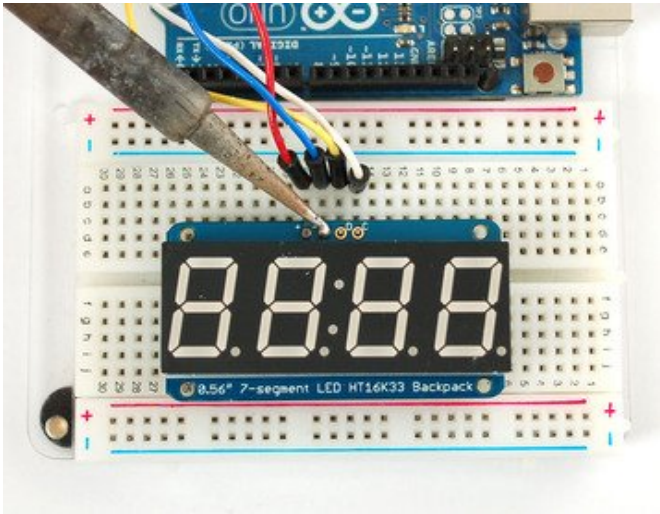


Clip the long pins.



Now you're ready to wire it up to a microcontroller. We'll assume you want to use a 4pin header. You can also of course solder wires directly. Place a 4-pin piece of header with the LONG pins down into the breadboard.





Place the soldered backpack on top of the header and Solder 'em!

That's it! now you're ready to run the firmware!

## Seven-Segment Backpack Firmware

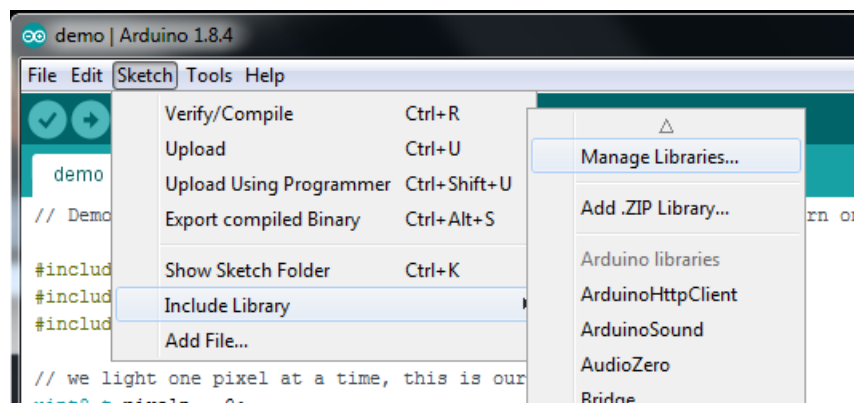
We wrote a basic library to help you work with the 7-segment backpack. The library is written for the Arduino and will work with any Arduino as it just uses the I2C pins. The code is very portable and can be easily adapted to any I2C-capable micro.

Wiring to the matrix is really easy

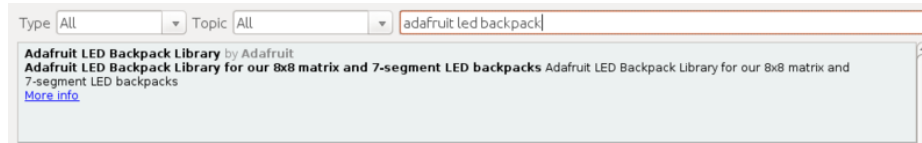
- Connect **CLK** to the I2C clock - on Arduino UNO that's Analog #5, on the Leonardo it's Digital #3, on the Mega it's digital #21
- Connect **DAT** to the I2C data - on Arduino UNO that's Analog #4, on the Leonardo it's Digital #2, on the Mega it's digital #20
- Connect **GND** to common ground
- Connect **VCC+** to power - 5V is best but 3V also seems to work for 3V microcontrollers.

Next, download the **Adafruit LED Backpack** library and the **Adafruit GFX** library from the Arduino library manager.

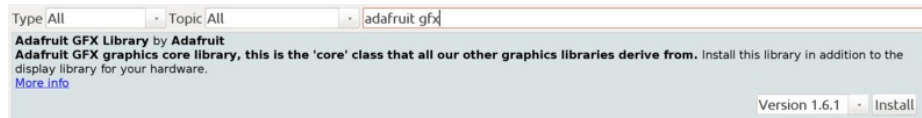
Open up the Arduino library manager:



Search for the **Adafruit LED Backpack** library and install it



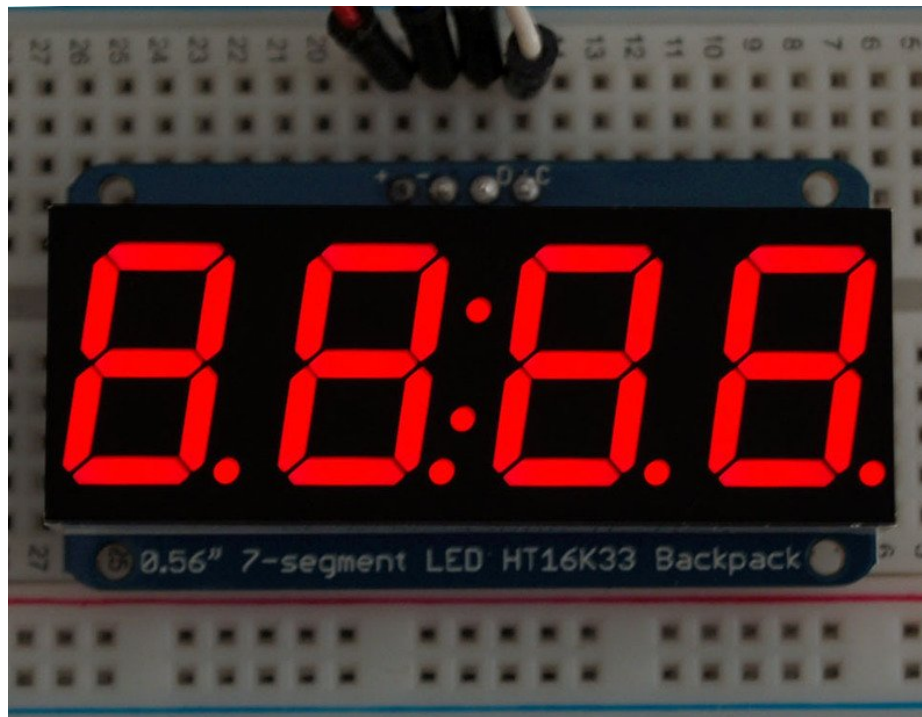
Search for the **Adafruit GFX** library and install it



Once you've restarted you should be able to select the **File>Examples>Adafruit\_LEDBackpack>sevensseg** example sketch. Upload it to your Arduino as usual. You should see a basic test program that goes through a bunch of different routines.

We also have a great tutorial on Arduino library installation at:

<http://learn.adafruit.com/adafruit-all-about-arduino-libraries-install-use> (<https://adafru.it/aYM>)



Once you're happy that the matrix works, you can write your own sketches.

There's a few ways you can draw to the display. The easiest is to just call **print** - just like you do with **Serial**

- **print(variable,HEX)** - this will print a hexadecimal number, from 0000 up to FFFF
- **print(variable,DEC)** or **print(variable)** - this will print a decimal integer, from 0000 up to 9999

If you need more control, you can call **writeDigitNum(location, number)** - this will write the *number* (0-9) to a single location. Location #0 is all the way to the left, location #2 is the colon dots so you probably want to skip it, location #4 is all the way to the right. If you want a decimal point, call **writeDigitNum(location, number, true)** which will paint the decimal point. To draw the colon, use **drawColon(true or false)**

If you want even more control, you can call **writeDigitRaw(*location*,*bitmask*)** to draw a raw 8-bit mask (as stored in a `uint8_t`) to that location.

All the drawing routines only change the display memory kept by the Arduino. Don't forget to call **writeDisplay()** after drawing to 'save' the memory out to the matrix via I2C.

There are also a few small routines that are special to the backpack:

- **setBrightness(*brightness*)**- will let you change the overall brightness of the entire display. 0 is least bright, 15 is brightest and is what is initialized by the display when you start
- **blinkRate(*rate*)** - You can blink the entire display. 0 is no blinking. 1, 2 or 3 is for display blinking.

## 1.2" 7-segment Backpack

These backpacks drive the massive 1.2" 7-segment modules. With 2 leds per segment these make a gorgeous and impressive display. The 7-segment displays normally require 16 pins to drive. This backpack uses an I2C constant-current matrix controller on the back of the PCB, so you only need 2 pins to drive it!

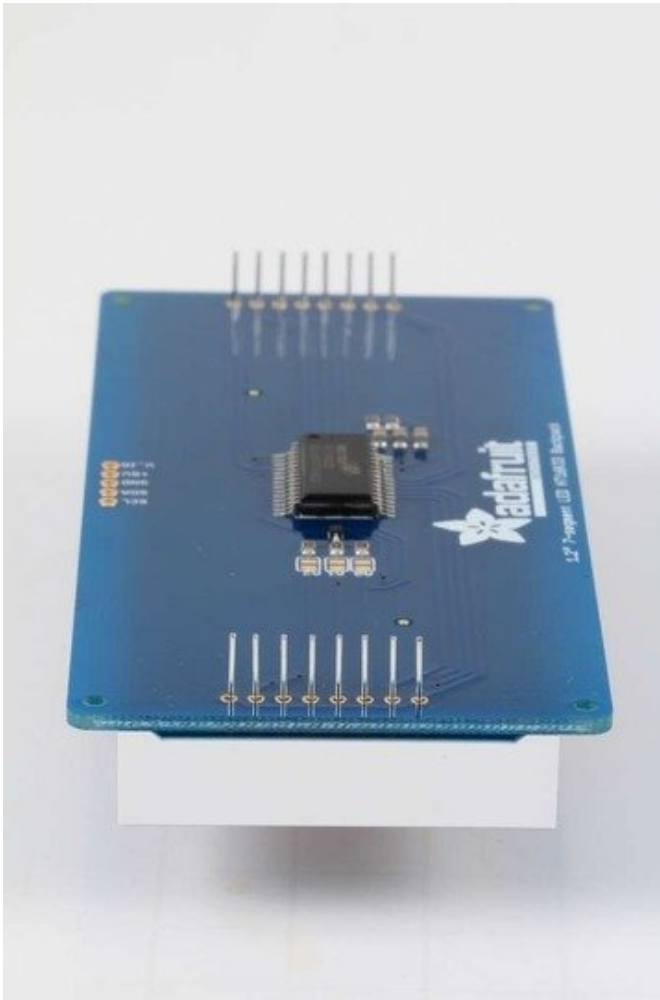
The controller chip takes care of multiplexing all the LEDs in the background. All you have to do is write data to it using the 2-pin I2C interface. There are three address select pins so you can select one of 8 addresses to control up to 8 of these on a single 2-pin I2C bus (as well as whatever other I2C chips or sensors you like). The driver chip can 'dim' the entire display from 1/16 brightness up to full brightness in 1/16th steps. It cannot dim individual LEDs, only the entire display at once.



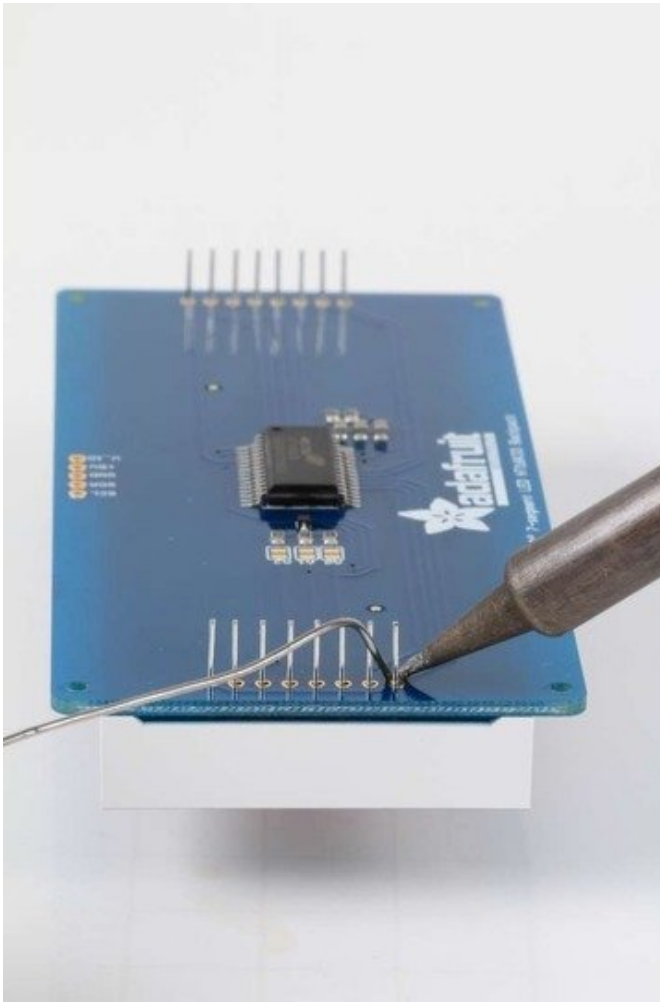
When you buy a pack from Adafruit, it comes with the fully tested and assembled backpack as well as a 7-segment display in one of the colors we provide (say, red, yellow, blue or green). You'll need to solder the matrix onto the backpack but its an easy task.



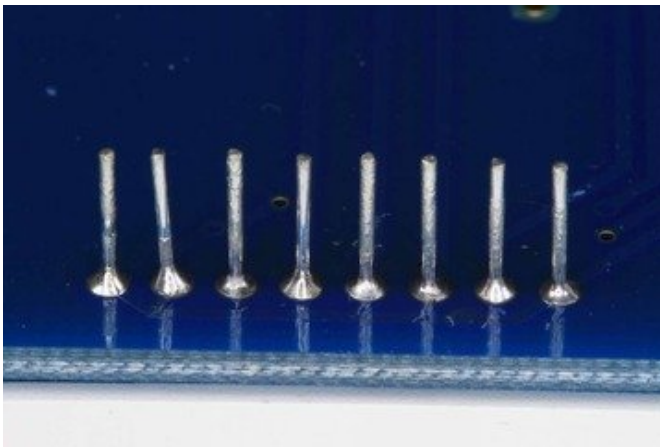
Remove the parts from packaging and place the LED matrix **OVER** the silkscreen side. **DO NOT PUT THE DISPLAY ON UPSIDE DOWN OR IT WONT WORK!!** Check the image below to make sure the 'decimal point' dots are in the same location as the ones on the silkscreen.



Turn the backpack over so its sitting flat on the matrix and ready to solder.

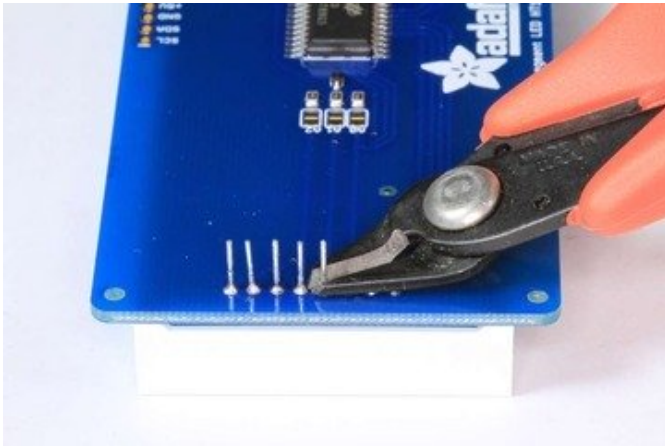


Then solder each pin. There are 8 on each end for a total of 16.



That completes the basic assembly. For use on a breadboard, you will want to also install a 5-pin header on the edge of the board.



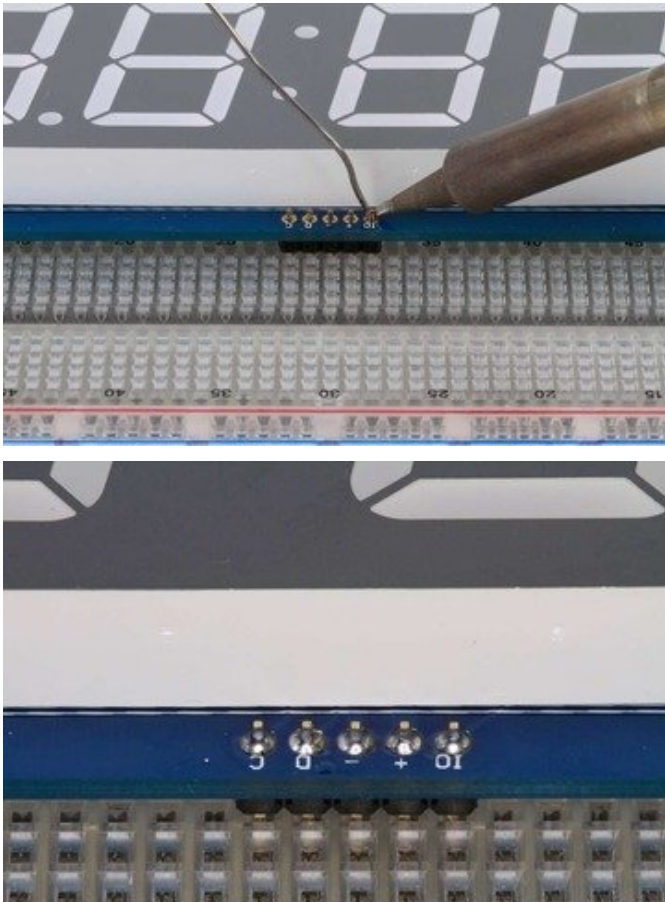


Clip the long pins close to the board.



Cut the header strip to length if necessary and insert LONG pins down into the breadboard.





Then solder all 5 pins.

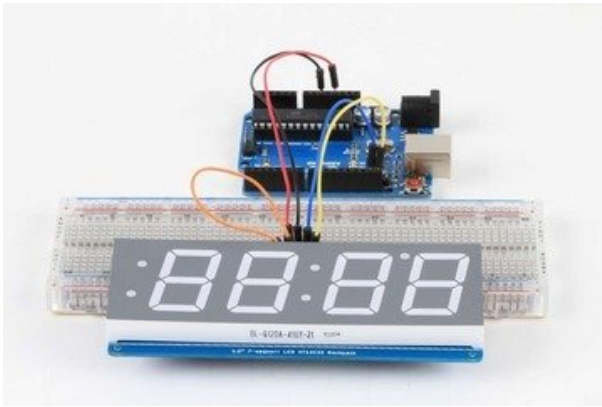
Now you are ready to wire it to your microcontroller. The required connections are:

- "D" - I2C Data Pin (SDA)
- "C" - I2C Clock Pin (SCL)
- "+" - 5v. (Will not run on 3.3v!)
- "-" - GND
- "IO" - I2C bus voltage.

Due to the size of this display, there are 2 LEDs in series for each segment. Because of this, the display requires 5v to run. It will not run on 3.3v.

For use with 3.3v processors, connect the IO pin to 3.3v. This will keep the I2C bus signals at a safe level for your processor.

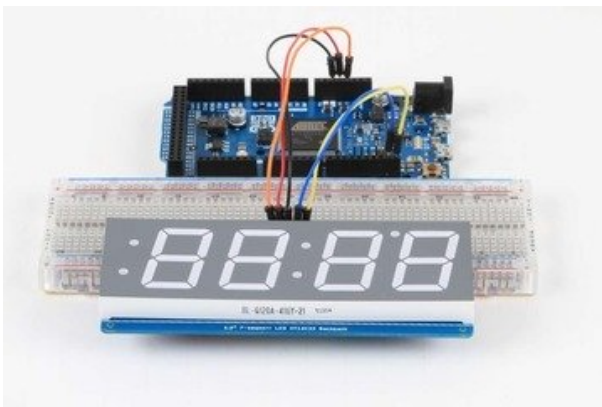
With 5v processors like the Arduino UNO, this pin can be connected to either 5v or 3.3v. (use 3.3v if there will be other 3.3v devices on the bus)



### Arduino Wiring - R3 and later

#### Connect:

- D -> SDA
- C -> SCL
- + -> 5v
- - -> GND
- IO -> jumper to + for 5v.



### Arduino Due and Other 3.3v Processors

#### Connect:

- D -> SDA
- C -> SCL
- + -> 5v
- - -> GND
- IO -> 3.3v



### Arduino "Classic" Wiring

#### Connect:

- D -> Analog-4 or Digital 20 for the Mega
- C -> Analog-5 or Digital 21 for the Mega
- + -> 5v
- - -> GND
- IO -> jumper to + for 5v.

OK, now on to the firmware!

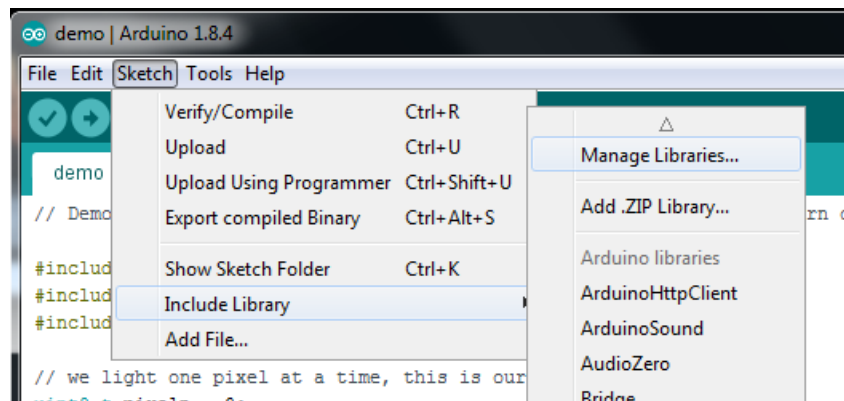
## Seven-Segment Backpack Firmware

Our 7-segment backpack library makes it easy to program these displays. The library is written for the Arduino and will

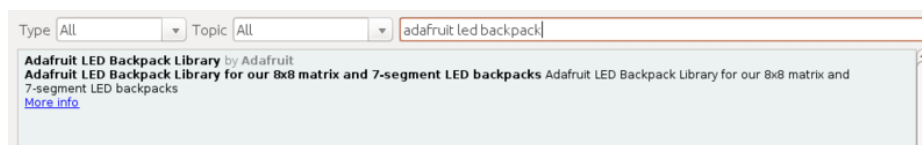
work with any Arduino as it just uses the I2C pins. The code is very portable and can be easily adapted to any I2C-capable micro.

Download the **Adafruit LED Backpack** library and the **Adafruit GFX** library from the Arduino library manager.

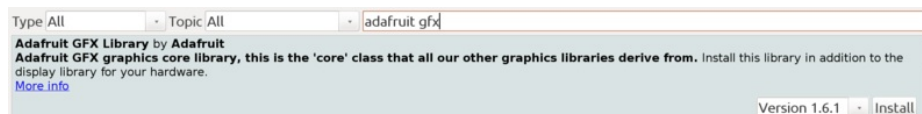
Open up the Arduino library manager:



Search for the **Adafruit LED Backpack** library and install it



Search for the **Adafruit GFX** library and install it



We also have a great tutorial on Arduino library installation at:

<http://learn.adafruit.com/adafruit-all-about-arduino-libraries-install-use> (<https://adafru.it/aYM>)

You should now be able to select the **File>Examples>Adafruit\_LEDBackpack>sevensseg** example sketch. Upload it to your Arduino as usual. You should see a "sevensseg" example sketch that will demonstrate various capabilities of the library and the display.



Once you're happy that the matrix works, you can write your own sketches.

There's a few ways you can draw to the display. The easiest is to just call **print** - just like you do with **Serial**

- **print(variable,HEX)** - this will print a hexadecimal number, from 0000 up to FFFF
- **print(variable,DEC)** or **print(variable)** - this will print a decimal integer, from 0000 up to 9999

If you need more control, you can call **writeDigitNum(location, number)** - this will write the *number* (0-9) to a single location. Location #0 is all the way to the left, location #2 is the colon dots so you probably want to skip it, location #4 is all the way to the right.

To control the colon and decimal points, use the **writeDigitRaw(location, bitmap)** function. (Note that both dots of the center colon are wired together internal to the display, so it is not possible to address them separately.) Specify 2 for the location and the bits are mapped as follows:

- 0x02 - center colon (both dots)
- 0x04 - left colon - lower dot
- 0x08 - left colon - upper dot
- 0x10 - decimal point

If you want a decimal point, call **writeDigitNum(location, number, true)** which will paint the decimal point. To draw the colon, use **drawColon(true or false)**

If you want full control of the segments in all digits, you can call **writeDigitRaw(location, bitmask)** to draw a raw 8-bit mask (as stored in a `uint8_t`) to any location.

All the drawing routines only change the display memory kept by the Arduino. Don't forget to call **writeDisplay()** after drawing to 'save' the memory out to the matrix via I2C.

There are also a few small routines that are special to the backpack:

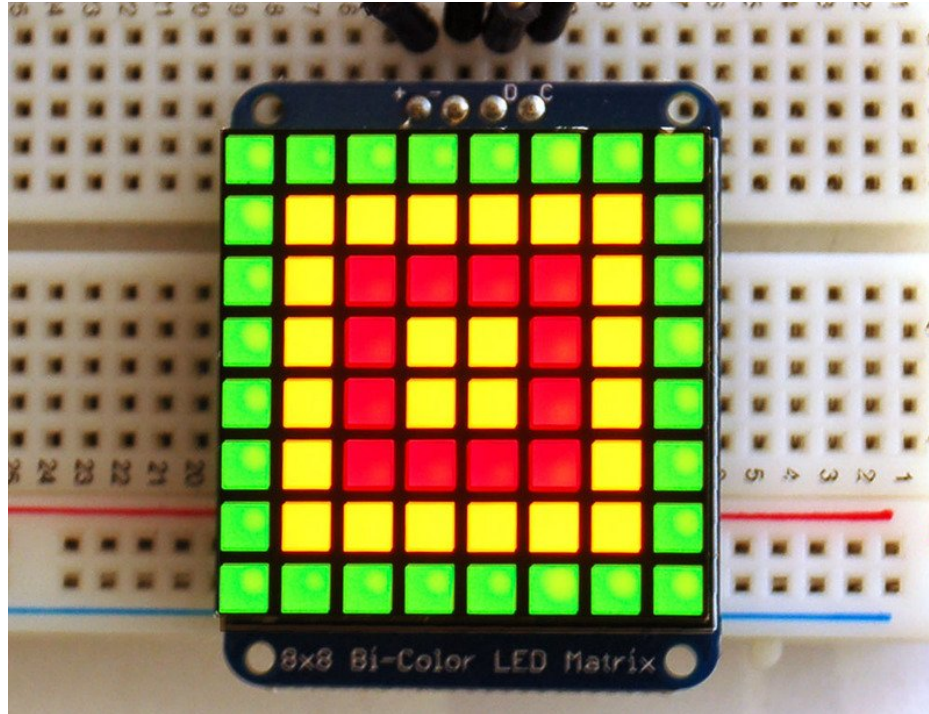
- **setBrightness(brightness)** - will let you change the overall brightness of the entire display. 0 is least bright, 15 is brightest and is what is initialized by the display when you start

- **blinkRate(*rate*)** - You can blink the entire display. 0 is no blinking. 1, 2 or 3 is for display blinking.



## Bi-Color 8x8 Matrix

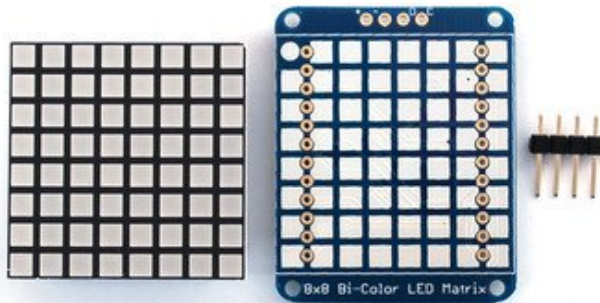
This version of the LED backpack is designed for these bright and colorful square=pxeled 8x8 matrices. They have 64 red and 64 green LEDs inside, for a total of 128 LEDs controlled as a 8x16 matrix. This backpack solves the annoyance of using 24 pins or a bunch of chips by having an I2C constant-current matrix controller sit neatly on the back of the PCB. The controller chip takes care of everything, drawing all 128 LEDs in the background. All you have to do is write data to it using the 2-pin I2C interface. There are three address select pins so you can select one of 8 addresses to control up to 8 of these on a single 2-pin I2C bus (as well as whatever other I2C chips or sensors you like). The driver chip can 'dim' the entire display from 1/16 brightness up to full brightness in 1/16th steps. It cannot dim individual LEDs, only the entire display at once.



## Assembly



Pay close attention to the instructions for positioning the matrix. It must be oriented correctly to work and is almost impossible to remove it once it has been soldered to the backpack!



When you buy a pack from Adafruit, it comes with the fully tested and assembled backpack as well as a 8x8 matrix. You'll need to solder the matrix onto the backpack but its an easy task.



Remove the parts from packaging and place the LED matrix OVER the silkscreen side.

The matrix must be soldered on the correct orientation or it will not work! Check for the side of the matrix that has printing on it. Then look for the front of the PCB that has a circle instead of a square in the corner and line those up as shown on the left

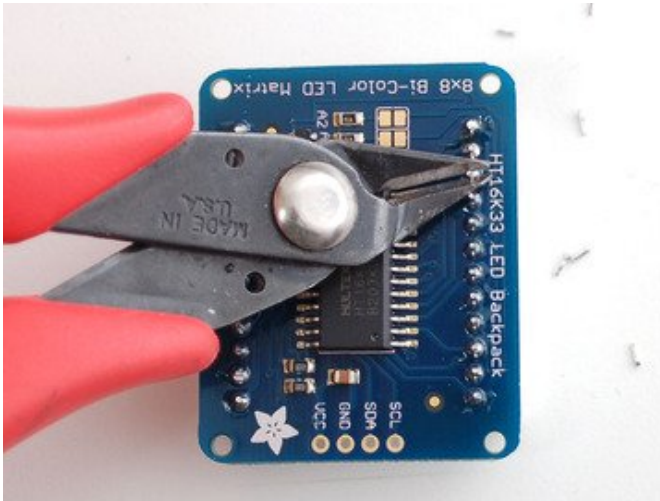
Do not solder the matrix over the chip on the back of the backpack - it will not work then!



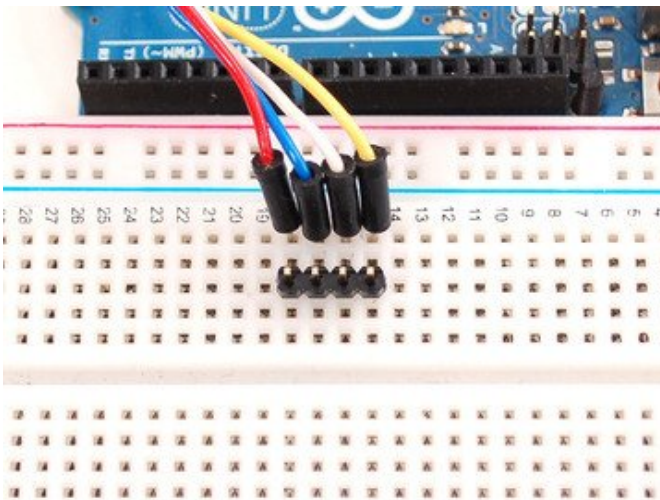
Turn the backpack over so its sitting flat on the matrix.



Solder all 24 pins.

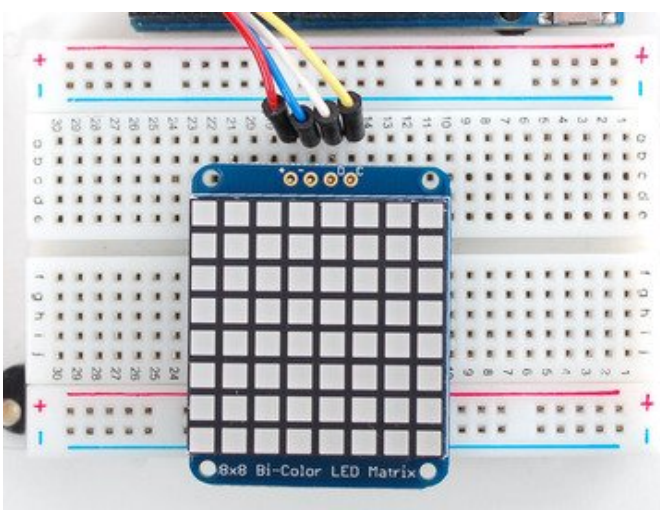


Clip the long pins

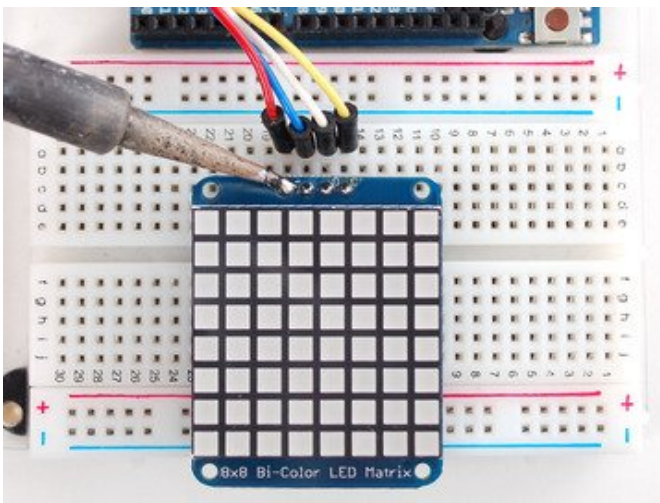


Now you're ready to wire it up to a microcontroller. We'll assume you want to use a 4pin header. You can also of course solder wires directly. Place a 4-pin piece of header with the LONG pins down into the breadboard.





Place the soldered backpack on top of the header.



Solder 'em!

## Arduino Setup

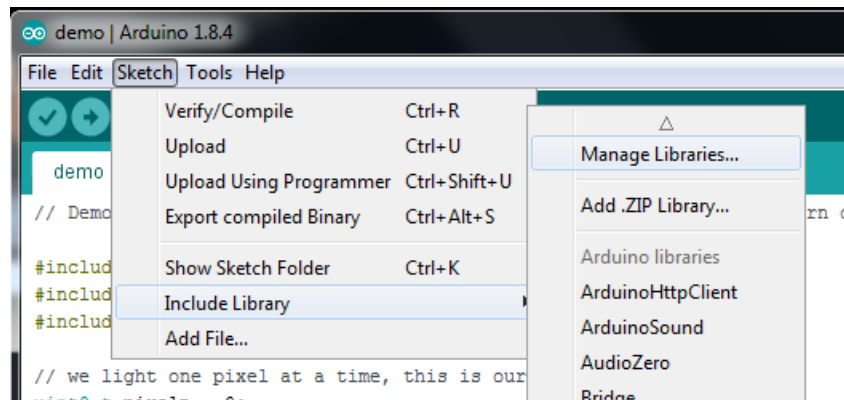
We wrote a basic library to help you work with the bi-color 8x8 matrix backpack. The library is written for the Arduino and will work with any Arduino as it just uses the I2C pins. The code is very portable and can be easily adapted to any I2C-capable micro.

Wiring to the matrix is really easy

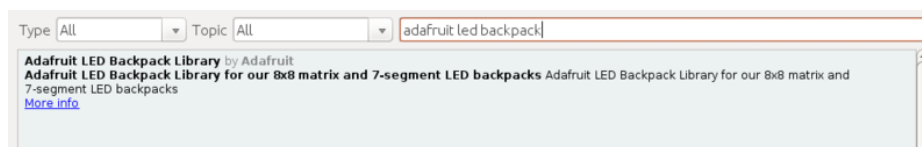
- Connect **CLK** to the I2C clock - on Arduino UNO thats Analog #5, on the Leonardo its Digital #3, on the Mega its digital #21
- Connect **DAT** to the I2C data - on Arduino UNO thats Analog #4, on the Leonardo its Digital #2, on the Mega its digital #20
- Connect **GND** to common ground
- Connect **VCC+** to power - 5V is best but 3V also seems to work for 3V microcontrollers.

Next, download the **Adafruit LED Backpack** library and the **Adafruit GFX** library from the Arduino library manager.

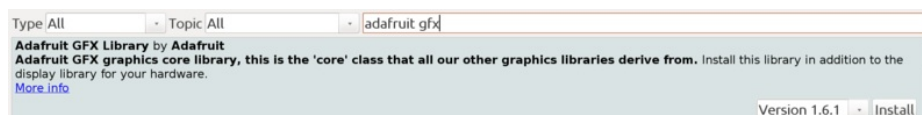
Open up the Arduino library manager:



Search for the **Adafruit LED Backpack** library and install it



Search for the **Adafruit GFX** library and install it

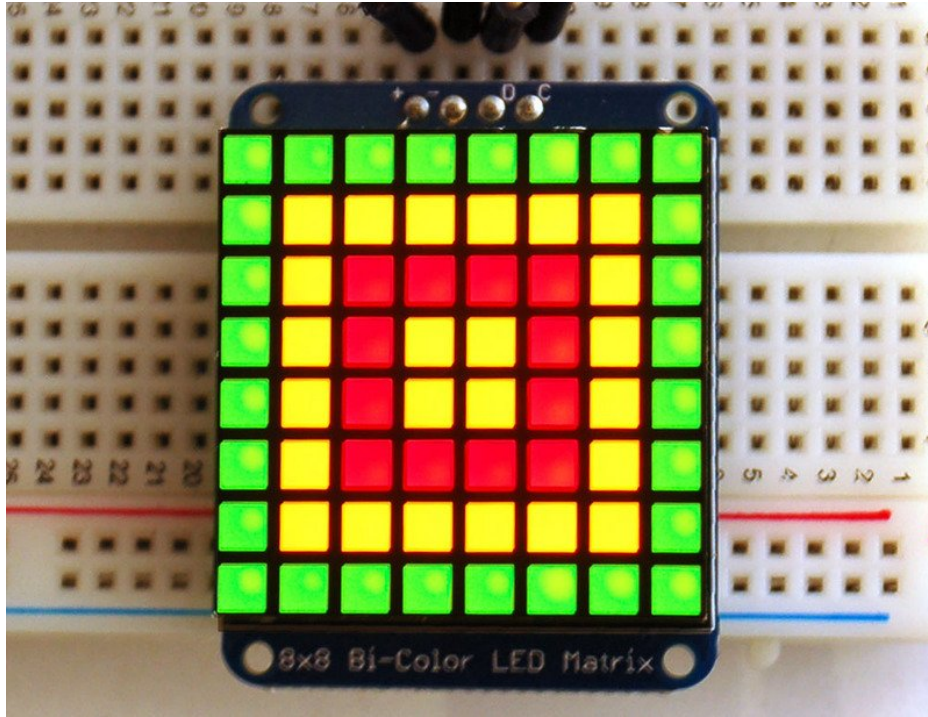


Once you've restarted you should be able to select the **File->Examples->Adafruit\_LEDBackpack->bicolor88** example sketch. Upload it to your Arduino as usual. You should see a basic test program that goes through a bunch of different drawing routines.

We also have a great tutorial on Arduino library installation at:

<http://learn.adafruit.com/adafruit-all-about-arduino-libraries-install-use> (<https://adafru.it/aYM>)



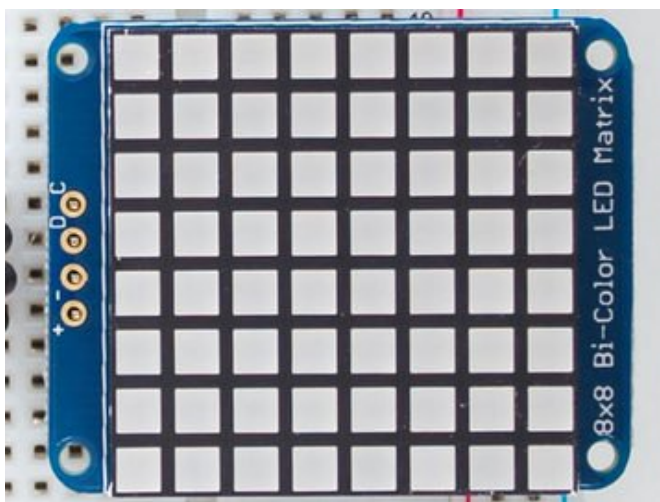


Once you're happy that the matrix works, you can write your own sketches. The 8x8 matrix supports everything the Adafruit GFX library - drawing pixels, lines, rectangles, circles, triangles, roundrects, and small bitmaps. [For more details check out the GFX page which will detail all of the GFX routines \(https://adafru.it/aPx\).](https://adafru.it/aPx)

All the drawing routines only change the display memory kept by the Arduino. Don't forget to call `writeDisplay()` after drawing to 'save' the memory out to the matrix via I2C.

There are also a few small routines that are special to the matrix:

- **setBrightness(*brightness*)** - will let you change the overall brightness of the entire display. 0 is least bright, 15 is brightest and is what is initialized by the display when you start
- **blinkRate(*rate*)** - You can blink the entire display. 0 is no blinking. 1, 2 or 3 is for display blinking.

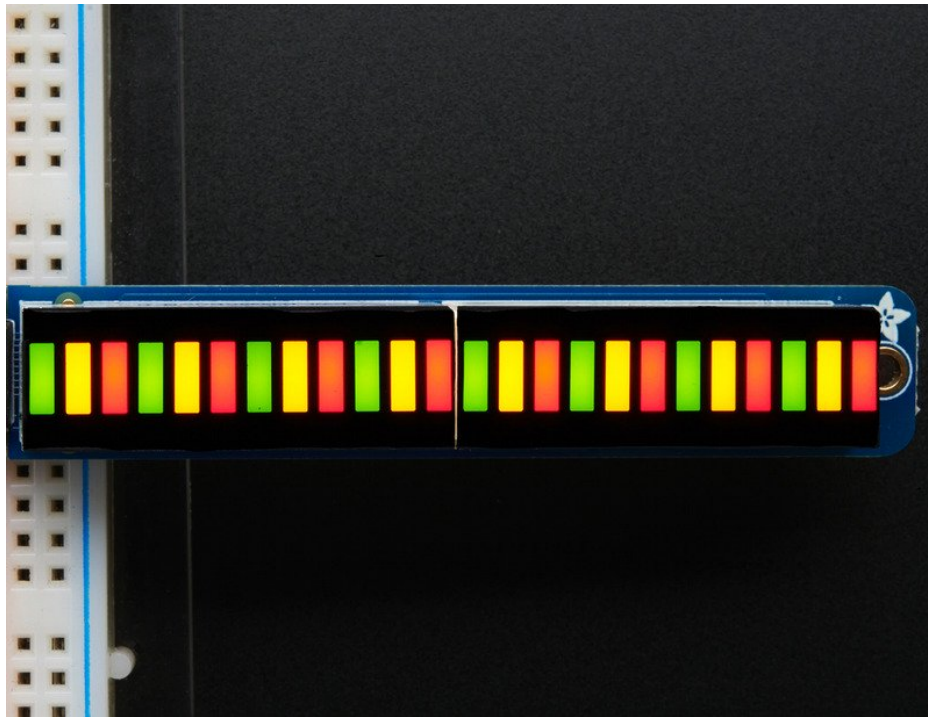


The default orientation for graphics commands on this display places pixel (0,0) at the top-left when the header is at the left and Adafruit logo at the right. To use the matrix as shown above (header at top, logo at bottom), call `matrix.setRotation(3)` before issuing graphics commands.

## Bi-Color 24 Bargraph

This version of the LED backpack is designed for these bright and colorful bi-color bargraph modules. Each module has 12 red and 12 green LEDs inside, for a total of 24 LEDs controlled as a 1x12 matrix. We put two modules on each backpack for a 24-bar long bargraph (48 total LEDs).

This backpack solves the annoyance of using lots of pins or a bunch of chips by having an I2C constant-current matrix controller sit neatly on the back of the PCB. The controller chip takes care of everything, drawing all 48 LEDs in the background. All you have to do is write data to it using the 2-pin I2C interface. There are three address select pins so you can select one of 8 addresses to control up to 8 of these on a single 2-pin I2C bus (as well as whatever other I2C chips or sensors you like). The driver chip can 'dim' the entire display from 1/16 brightness up to full brightness in 1/16th steps. It cannot dim individual LEDs, only the entire display at once.



## Assembly

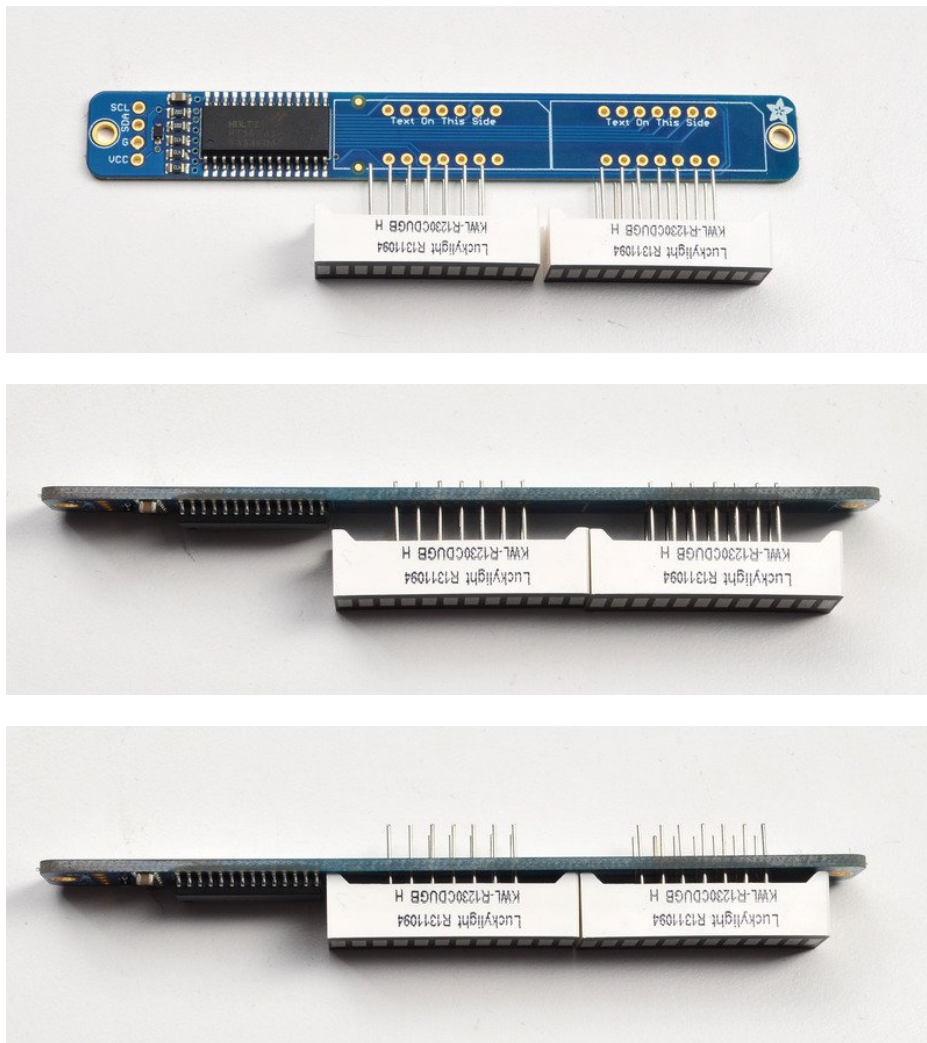


Pay close attention to the instructions for positioning the bargraphs. They must be oriented correctly to work and is almost impossible to remove them once soldered to the backpack!

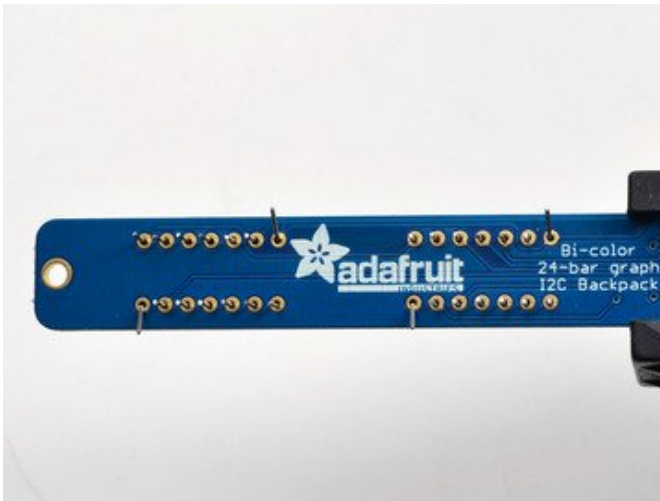
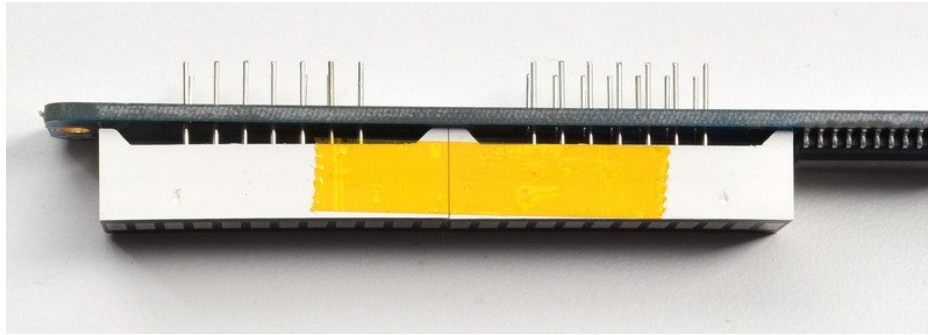
Remove the parts from packaging and place the LED bargraphs over the outlines on the top of the PCB.

The bargraph must be soldered on the correct orientation or it will not work! Check for the side of the bargraph that has printing on it. Then look for the outline on the PCB that has "Text on this side" marked!

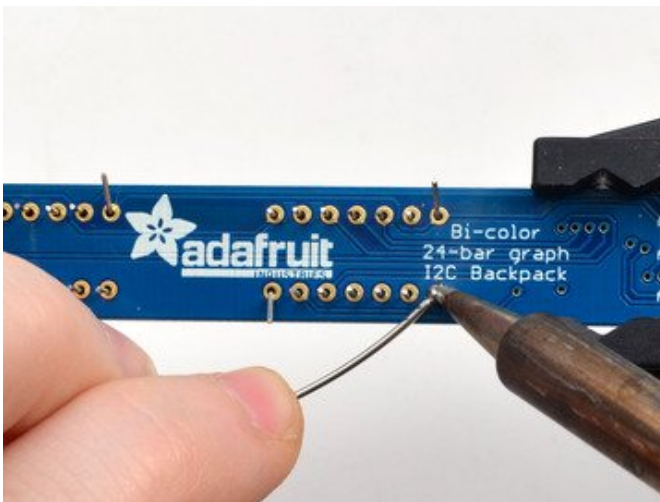
Do not solder the matrix onto the back of the PCB, it won't work either!



To keep the two bargraphs lined up nicely, you can use a little masking or scotch tape on the bargraph modules, tape them so they are in a straight line. There is a little play during soldering so if you don't do this the two modules may not be in a perfect line.

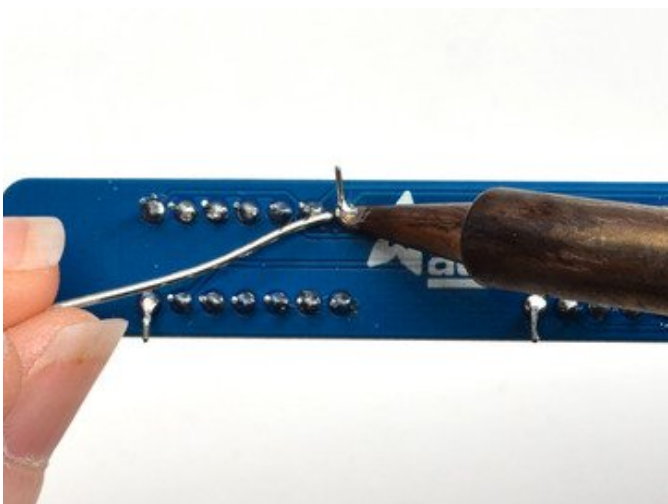
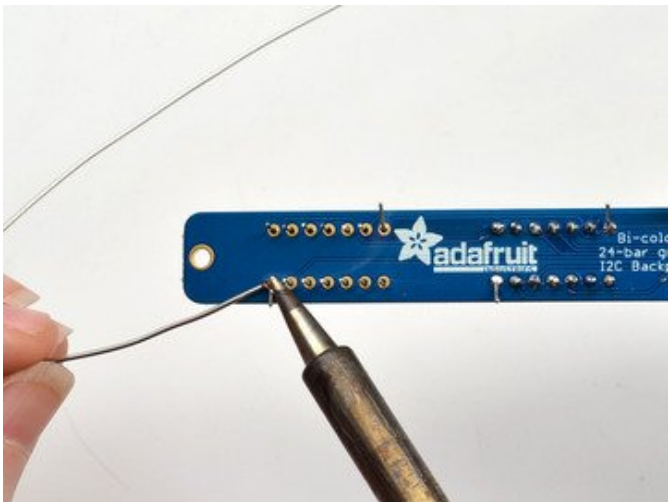
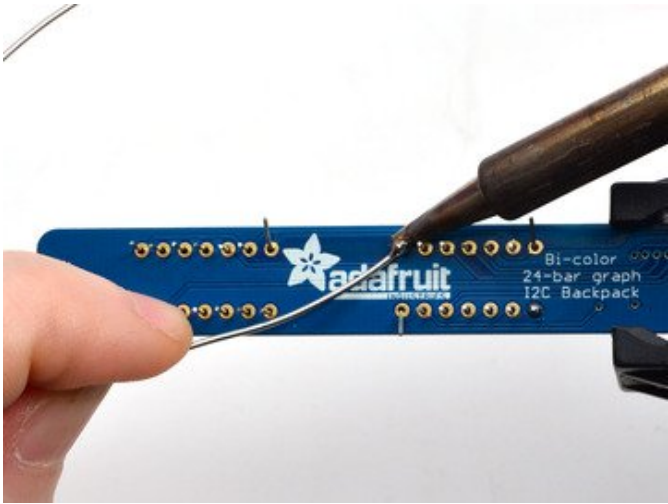


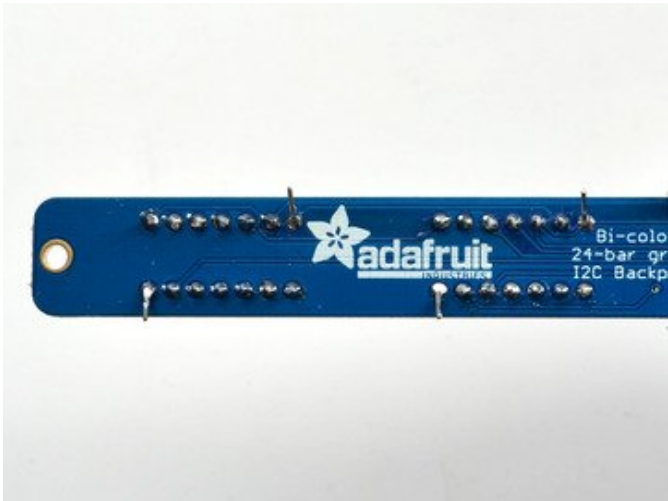
Turn over the PCB and bend opposite-corner pins of the modules out so that the modules are fixed in place against the PCB. Now is a good time to do a last check that you oriented the modules the right way!



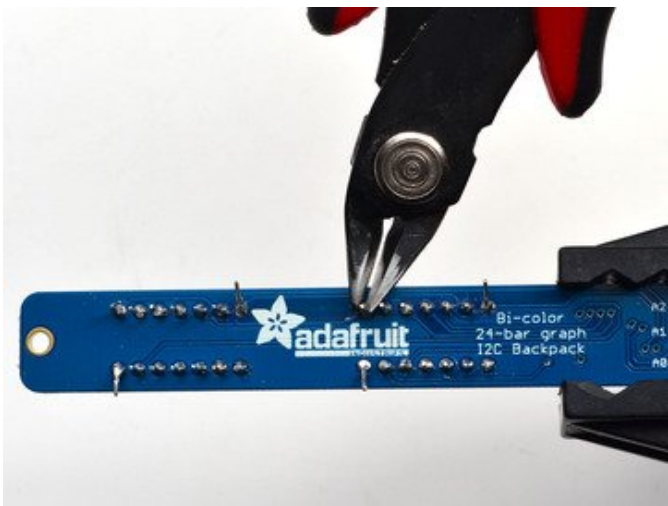
Solder all the module pins in!



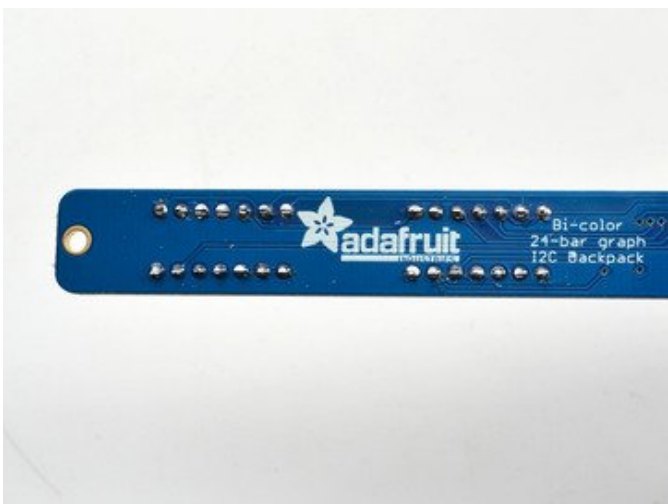




OK nice work!



Once soldered, clip each pin. They're quite short and the pins are thicker than usual, so do this over/inside a trash bin so that the pins don't fly off and hit you or your pets.



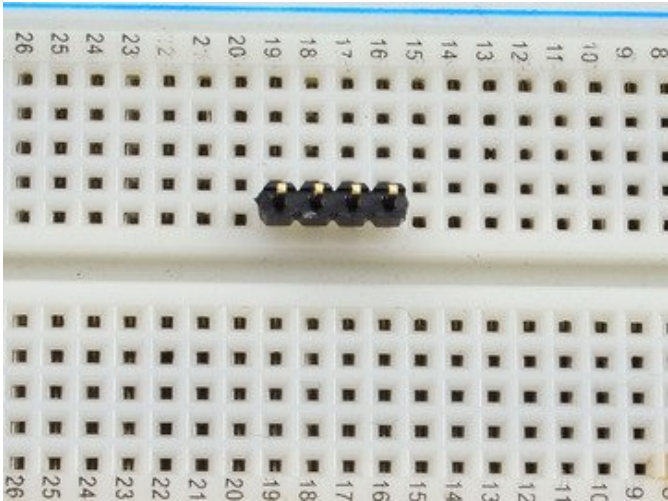
Everything should be neat and clipped, you're done!

## Soldering on breadboard pins

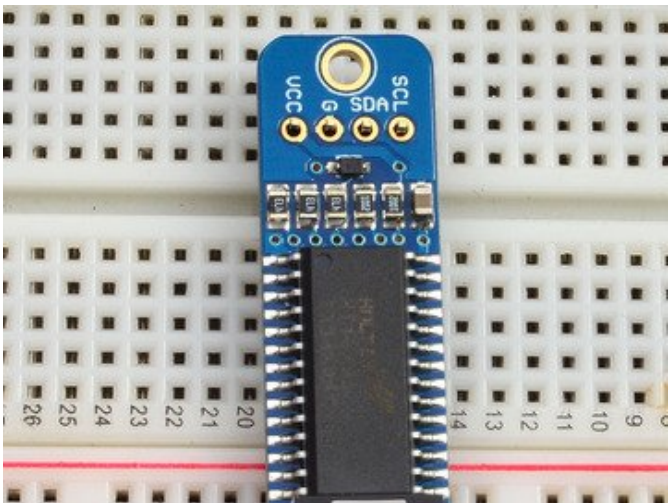
This is an optional step - you only need to do this step if you're planning on using the bargraph in a breadboard. Chances are you may want to solder wires directly to the pads instead, so you can mount the bargraph elsewhere.



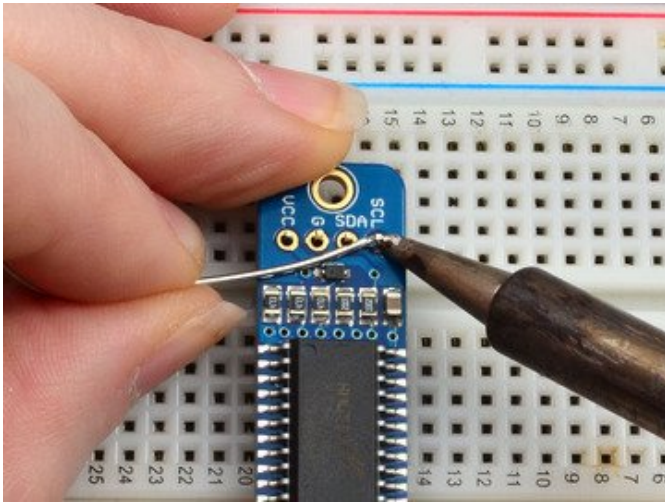
Anyhow, skip this step if its not for you!



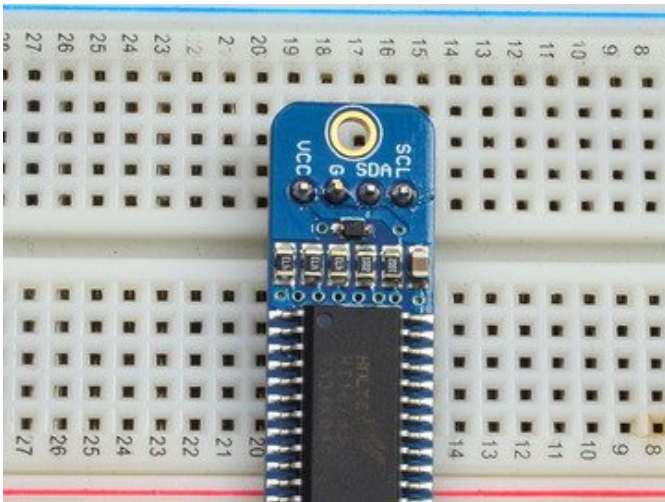
Break off a piece of male header, 4 pins long. Plug the **long ends** into a solderless breadboard.



Place the PCB on top. you may need to support it a little since its quite long.



Solder these 4 pins too, since you're good at it now this should be easy.

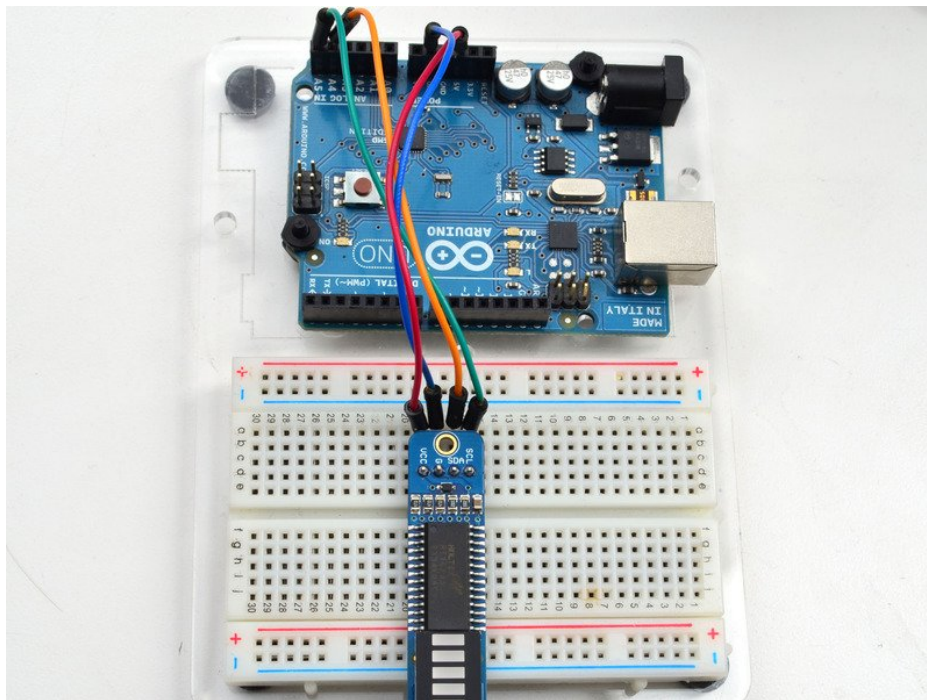


## Arduino Wiring and Setup

We wrote a basic library to help you work with the bi-color bargraph backpack. The library is written for the Arduino and will work with any Arduino as it just uses the I2C pins. The code is very portable and can be easily adapted to any I2C-capable micro.

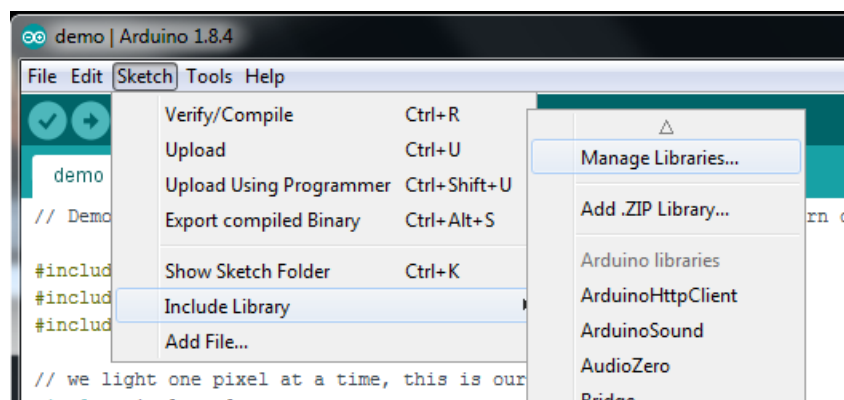
Wiring to the bargraph is really easy

- Connect **SCL** to the I2C clock - on Arduino UNO thats Analog #5, on the Leonardo its Digital #3, on the Mega its digital #21
- Connect **SDA** to the I2C data - on Arduino UNO thats Analog #4, on the Leonardo its Digital #2, on the Mega its digital #20
- Connect **GND** to common ground
- Connect **VCC** to power - 5V is best but 3V also seems to work for 3V microcontrollers.

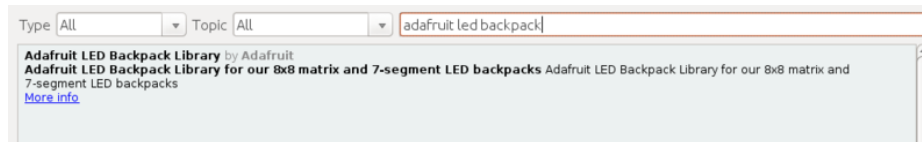


Next, download the **Adafruit LED Backpack** library and the **Adafruit GFX** library from the Arduino library manager.

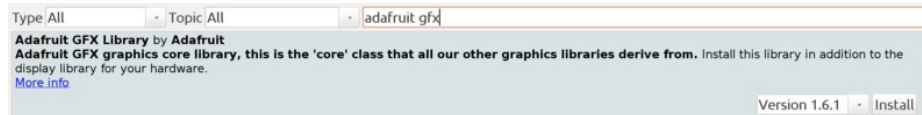
Open up the Arduino library manager:



Search for the **Adafruit LED Backpack** library and install it



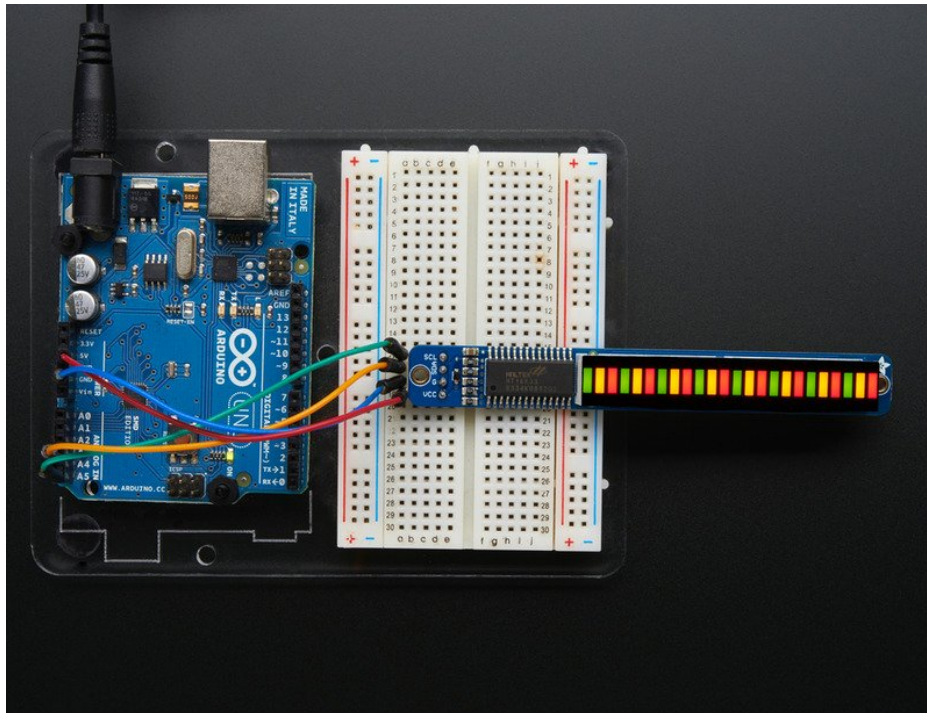
Search for the **Adafruit GFX** library and install it



Once you've restarted you should be able to select the **File->Examples->Adafruit\_LEDBackpack->bargraph24** example sketch. Upload it to your Arduino as usual. You should see a basic test program that tests all the LEDs with different colors.

We also have a great tutorial on Arduino library installation at:

<http://learn.adafruit.com/adafruit-all-about-arduino-libraries-install-use> (<https://adafru.it/aYM>)



Using the library interface is very easy. Start by creating the object with

```
Adafruit_24bargraph bar = Adafruit_24bargraph();
```

you can name it whatever you want, not just **bar**

Then initialize it with

```
bar.begin(0x70); // pass in the address
```

You can init with any address from 0x70 to 0x77, just make sure you solder in the matching solder jumpers!

Finally, write to the bargraph with

```
bar.setBar(lednumber, ledcolor);
```

Where *lednumber* is 0 thru 23. *ledcolor* can be **LED\_RED**, **LED\_YELLOW**, **LED\_GREEN** or **LED\_OFF**

The drawing routines only change the display memory kept by the Arduino. Don't forget to call **bar.writeDisplay()** after drawing to 'save' the memory out to the matrix via I2C.

There are also a few small routines that are special to the matrix:

- **setBrightness(*brightness*)**- will let you change the overall brightness of the entire display. 0 is least bright, 15 is brightest and is what is initialized by the display when you start
- **blinkRate(*rate*)** - You can blink the entire display. 0 is no blinking. 1, 2 or 3 is for display blinking.



# CircuitPython Wiring and Setup

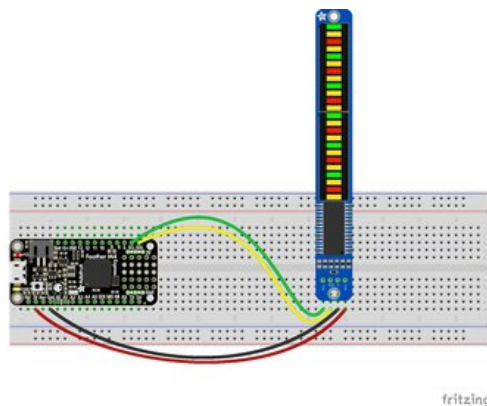
## Wiring

It's easy to use LED Matrices with CircuitPython and the [Adafruit CircuitPython HT16K33](https://adafru.it/u1E) (<https://adafru.it/u1E>) library. This module allows you to easily write CircuitPython code to control the display.

You can use this sensor with any CircuitPython microcontroller board.

We'll cover how to wire the Bargraph to your CircuitPython microcontroller board. First assemble your Bargraph.

Connect the Bargraph to your microcontroller board as shown below.



- Microcontroller 3V to Bargraph VIN
- Microcontroller GND to Bargraph GND
- Microcontroller SCL to Bargraph SCL
- Microcontroller SDA to Bargraph SDA

<https://adafru.it/IfA>

<https://adafru.it/IfA>

## Library Setup

To use the LED backpack with your [Adafruit CircuitPython](https://adafru.it/BIM) (<https://adafru.it/BIM>) board you'll need to install the [Adafruit\\_CircuitPython\\_HT16K33](https://adafru.it/u1E) (<https://adafru.it/u1E>) library on your board.

First make sure you are running the [latest version of Adafruit CircuitPython](https://adafru.it/tBa) (<https://adafru.it/tBa>) for your board. Next you'll need to install the necessary libraries to use the hardware--read below and carefully follow the referenced steps to find and install these libraries from [Adafruit's CircuitPython library bundle](https://adafru.it/zdx) (<https://adafru.it/zdx>).

### Bundle Install

For express boards that have extra flash storage, like the Feather/Metro M0 express and Circuit Playground express, you can easily install the necessary libraries with [Adafruit's CircuitPython bundle](https://adafru.it/zdx) (<https://adafru.it/zdx>). This is an all-in-one package that includes the necessary libraries to use the LED backpack display with CircuitPython. For details on installing the bundle, read about [CircuitPython Libraries](https://adafru.it/ABU) (<https://adafru.it/ABU>).

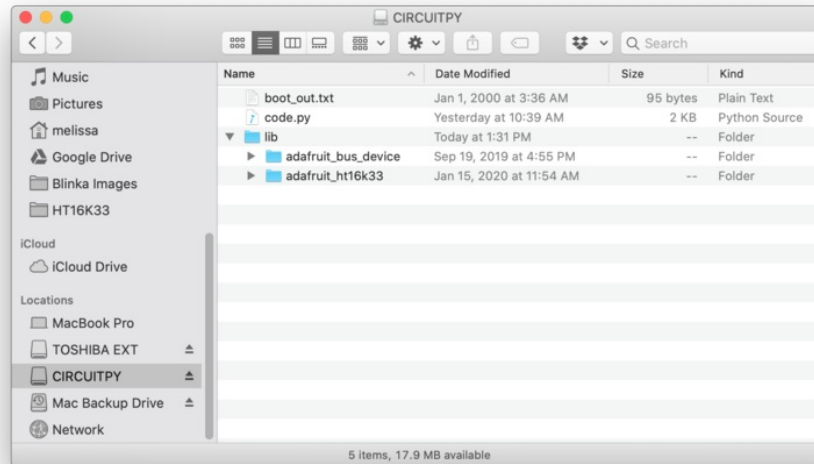
Remember for non-express boards like the Trinket M0, Gemma M0, and Feather/Metro M0 basic you'll need to [manually install the necessary libraries](https://adafru.it/ABU) (<https://adafru.it/ABU>) from the bundle:

- `adafruit_ht16k33`
- `adafruit_bus_device`



If your board supports USB mass storage, like the MO-based boards, then simply drag the files to the board's file system. **Note on boards without external SPI flash, like a Feather MO or Trinket/Gemma MO, you might run into issues on Mac OSX with hidden files taking up too much space when drag and drop copying, [see this page for a workaround \(https://adafru.it/u1d\)](https://adafru.it/u1d).**

Before continuing make sure your board's **lib** folder or root filesystem has at least the **adafruit\_ht16k33** and **adafruit\_bus\_device** folders/modules copied over.



## Python Wiring and Setup

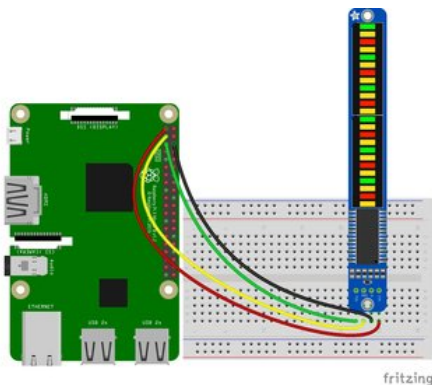
### Wiring

It's easy to use LED Matrices with Python and the [Adafruit CircuitPython HT16K33](https://adafru.it/u1E) (<https://adafru.it/u1E>) library. This library allows you to easily write Python code to control the display.

We'll cover how to wire the Bargraph to your Raspberry Pi. First assemble your Bargraph.

Since there's *dozens* of Linux computers/boards you can use we will show wiring for Raspberry Pi. For other platforms, [please visit the guide for CircuitPython on Linux to see whether your platform is supported](https://adafru.it/BSN) (<https://adafru.it/BSN>).

Connect the Bargraph as shown below to your Raspberry Pi.



- Raspberry Pi 3.3V to Bargraph VIN
- Raspberry Pi GND to Bargraph GND
- Raspberry Pi SCL to Bargraph SCL
- Raspberry Pi SDA to Bargraph SDA

<https://adafru.it/IfB>

<https://adafru.it/IfB>

### Setup

You'll need to install the Adafruit\_Blinka library that provides the CircuitPython support in Python. This may also require enabling I2C on your platform and verifying you are running Python 3. [Since each platform is a little different, and Linux changes often, please visit the CircuitPython on Linux guide to get your computer ready](https://adafru.it/BSN) (<https://adafru.it/BSN>)!

#### Python Installation of HT16K33 Library

Once that's done, from your command line run the following command:

- `pip3 install adafruit-circuitpython-ht16k33`

If your default Python is version 3 you may need to run 'pip' instead. Just make sure you aren't trying to use CircuitPython on Python 2.x, it isn't supported!

If that complains about pip3 not being installed, then run this first to install it:

- `sudo apt-get install python3-pip`

That's it. You should be ready to go.



## CircuitPython and Python Usage

The following section will show how to control the LED backpack from the board's Python prompt / REPL. You'll walk through how to control the LED display and learn how to use the CircuitPython module built for the display.

First [connect to the board's serial REPL \(https://adafru.it/Awz\)](https://adafru.it/Awz) so you are at the CircuitPython >>> prompt.

### Initialization

First you'll need to initialize the I2C bus for your board. It's really easy, first import the necessary modules. In this case, we'll use `board` and `Bicolor24`.

Then just use `board.I2C()` to create the I2C instance using the default SCL and SDA pins (which will be marked on the boards pins if using a Feather or similar Adafruit board).

Then to initialize the bargraph, you just pass `i2c` in.

```
import board
from adafruit_ht16k33.bargraph import Bicolor24

i2c = board.I2C()
bc24 = Bicolor24(i2c)
```

If you bridged the address pads on the back of the barcode, you could pass in the address. The addresses for the HT16K33 can range between 0x70 and 0x77 depending on which pads you have bridged, with 0x70 being used if you haven't bridged any of them. For instance, if you bridge only the **a0** pad, you would use `0x71` like this:

```
bc24 = Bicolor24(i2c, address=0x71)
```

### Setting Individual Bars

To set individual bars to specific colors, you simply treat the `bc24` object as a list and set it to `bc24.LED_RED`, `bc24.LED_GREEN`, `bc24.LED_YELLOW` or `bc24.LED_OFF`.

```
bc24[0] = bc24.LED_RED
bc24[1] = bc24.LED_GREEN
bc24[2] = bc24.LED_YELLOW
bc24[3] = bc24.LED_OFF
```

### Filling the Entire Bargraph

To fill the entire bargraph, just use the `fill()` function and pass in the color you want to set it to. For instance, if you wanted to set everything to green, you would use:

```
bc24.fill(bc24.LED_GREEN)
```

## Connecting Multiple Backpacks

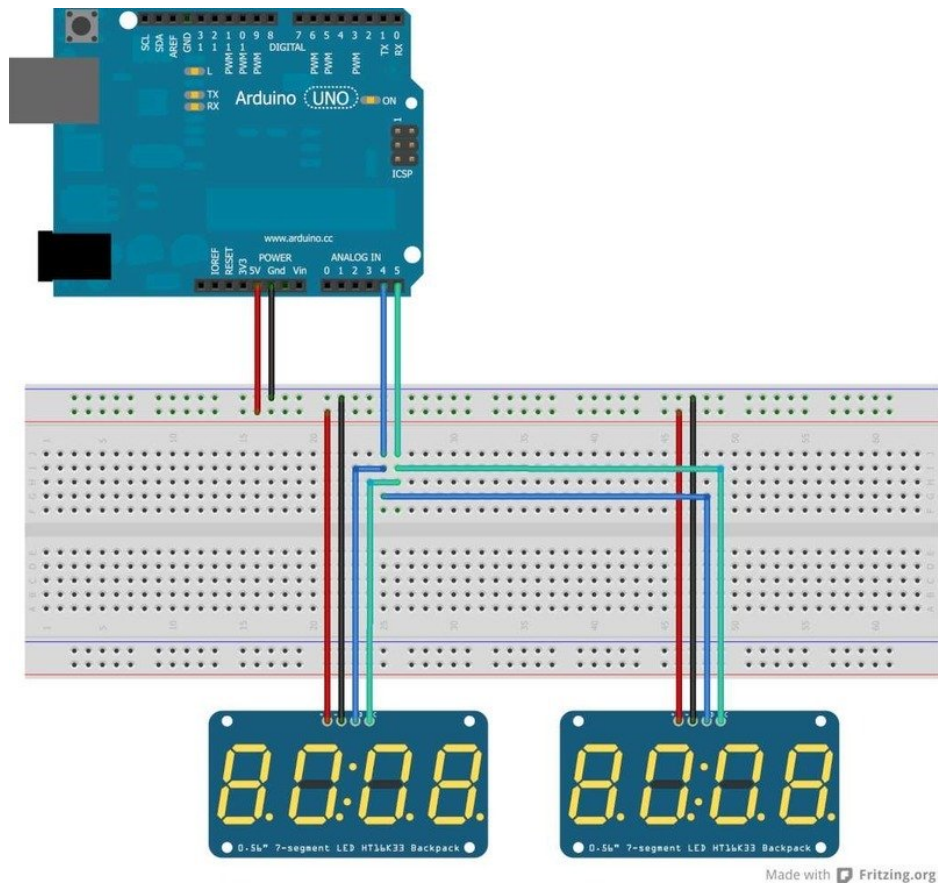
The coolest part about the I2C backpacks is that you can connect more than one using just the same 2 pins. This opens possibilities for [all kinds of multi-display projects](https://adafru.it/aQt) (<https://adafru.it/aQt>).

For a project that shows this in practice, check out this page (<https://adafru.it/aQF>) on animating multiple LED backpacks



## Wire it Up

To connect another backpack to your project, just wire it in parallel with the first one as in the diagram below.



Made with  Fritzing.org

## Configure the Address

For each backpack you add, you need to configure a different I2C address. You can keep adding backpacks in the same way until you run out of addresses. See the next page for how to configure the address on your backpack.



## Changing I2C Address

The HT16K33 driver chip on these LED backpacks has a default I2C address of **0x70**. Since each device on an I2C bus must have a unique address, its important to avoid collisions or you'll get a lot of strange responses from your electronic devices!

Luckily, the HT16K33 has 2 or 3 address adjust pins, so that the address can be changed! The mini 0.8" 8x8 matrix backpack has 2 address adjust pins. The 1.2" 8x8, bi-color 8x8, bi-color bargraph and 4 x 7-segment backpacks have 3 address adjust pins.

That means that you can set the backpacks to these addresses:

- **Mini 0.8" 8x8:** 0x70, 0x71, 0x72, 0x73
- **Small 1.2" 8x8:** 0x70, 0x71, 0x72, 0x73, 0x74, 0x75, 0x76, 0x77
- **4 x 7-segment:** 0x70, 0x71, 0x72, 0x73, 0x74, 0x75, 0x76, 0x77
- **Bi-color 1.2" 8x8:** 0x70, 0x71, 0x72, 0x73, 0x74, 0x75, 0x76, 0x77
- **Bi-color 24-bargraph:** 0x70, 0x71, 0x72, 0x73, 0x74, 0x75, 0x76, 0x77

You can mix-and-match matrices, as long as each one has a unique address!

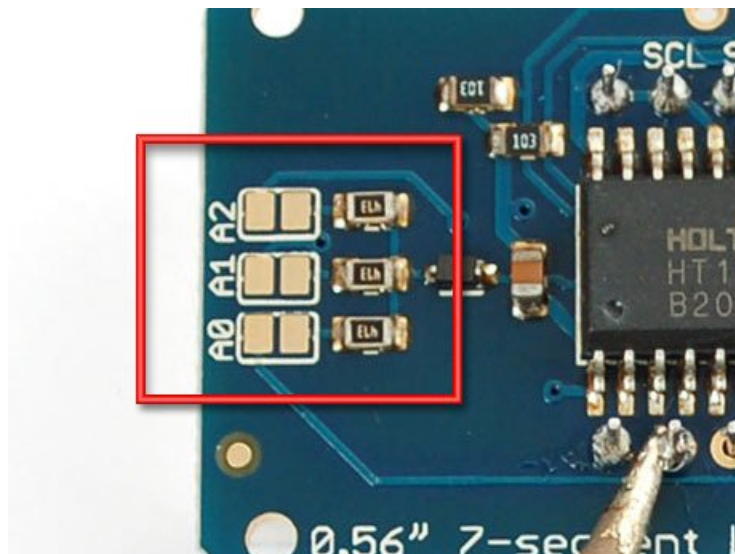
## Changing Addresses

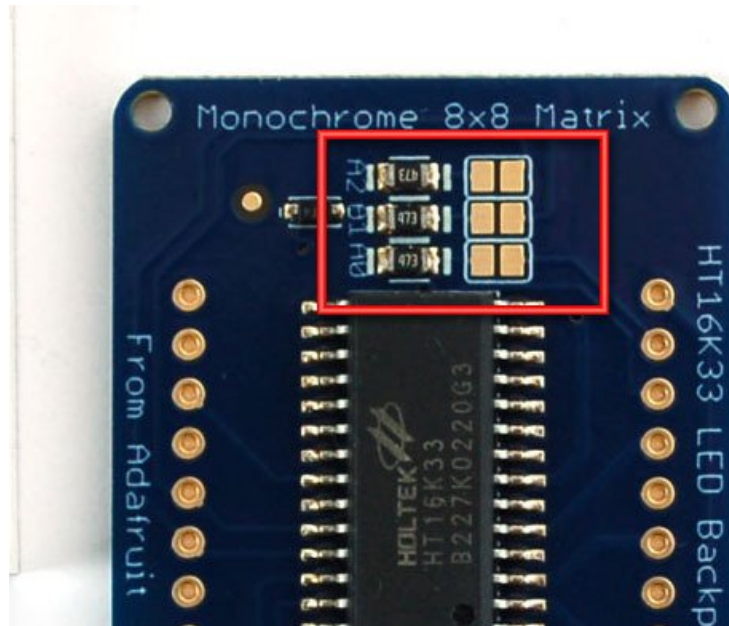
You can change the address of a backpack very easily. Look on the back to find the two or three **A0**, **A1** or **A2** solder jumpers. Each one of these is used to hardcode in the address. If a jumper is shorted with solder, that sets the address. **A0** sets the lowest bit with a value of **1**, **A1** sets the middle bit with a value of **2** and **A2** sets the high bit with a value of **4**. The final address is **0x70 + A2 + A1 + A0**. So for example if **A2** is shorted and **A0** is shorted, the address is **0x70 + 4 + 1 = 0x75**. If only **A1** is shorted, the address is **0x70 + 2 = 0x72**

**A2** does not appear on the mini 0.8" 8x8 matrix, so you cannot set the address higher than 0x73



On the 1.2" 8x8 backpacks, the labels for A1 and A2 are swapped! Sorry about that!





## Changing the address in your code

Once you've adjusted the address on the backpack, you'll also want to adjust the address in the code! For the Arduino library we wrote, it's simple. For example, let's say you want to have two seven-segment matrices. One is set to address 0x70 and the other is set to 0x71. Find this code in the example

```
Adafruit_7segment matrix = Adafruit_7segment();

void setup() {
  Serial.begin(9600);
  Serial.println("7 Segment Backpack Test");

  matrix.begin(0x70);
}
```

And change it to this:

```
Adafruit_7segment matrix1 = Adafruit_7segment();
Adafruit_7segment matrix2 = Adafruit_7segment();

void setup() {
  Serial.begin(9600);
  Serial.println("Double 7 Segment Backpack Test");

  matrix1.begin(0x70);
  matrix2.begin(0x71);
}
```

That is, instantiate two matrix objects. Then one is called with **begin(0x70)** and the other is called with **begin(0x71)**. Each one can be used individually. If you need more matrices, just instantiate more objects at the top and **begin()** each one with the unique I2C address.



## F.A.Q.

---

□ I want to use these modules with other non-Arduino, how can I port the code?

The best way to get up and running is to read the HT16K33 driver datasheet available at <http://learn.adafruit.com/adafruit-led-backpack/downloads> - the backpacks all use this chip to do all the LED driving. You can cross-reference this document with the Arduino library code to adapt it to your platform. Any microcontroller that has I2C host support should be able to drive the backpacks but we only provide Arduino example code at this time

---

□ I'd like to use these backpacks with Python / Linux (e.g. a Raspberry Pi)

You're in luck! We have a full tutorial here that covers using the 7-segment and 8x8 matrices on a Pi with Python code -> <http://learn.adafruit.com/matrix-7-segment-led-backpack-with-the-raspberry-pi>

---

□ I am having strange problems when combining Adafruit Motor Shield/Servo Shield (PCA9685 based) with the Adafruit LED Matrix/7Seg Backpacks

We are not sure why this occurs but there is an address collision even though the address are different! Set the backpacks to address 0x71 or anything other than the default 0x70 to make the issue go away



---

□ What is the current draw of the backpacks?

It depends on how many LEDs you have lit at once!

But a rough estimation is 20 milliamps per segment. Note that segments are multiplexed per row so that means

- 8x8 Mono Matrix (8 rows) =  $8 \times 20\text{mA} = 160\text{mA}$  max
- 7-segment backpacks (7 segments + 1 dot) =  $8 \times 20\text{mA} = 160\text{ mA}$
- Alphanumeric (14 segments) =  $14 \times 20\text{mA} = 280\text{mA}$
- Bi-color 8x8 and 8x16 matrix (16 rows) =  $8 \times 16 = 320\text{mA}$

But again, this is *maximum* and assumes all digits and all segments are lit up! Your average use may be 1/10 to 1/2 of this amount

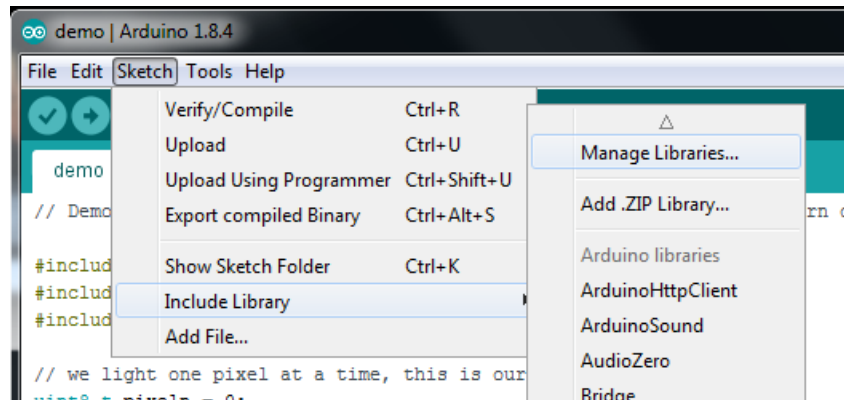


## Downloads

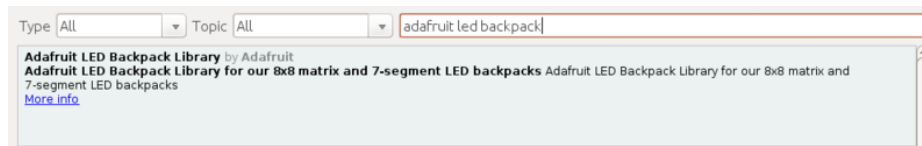
### Software

You'll need to install the following libraries to use any of the LED backpacks.

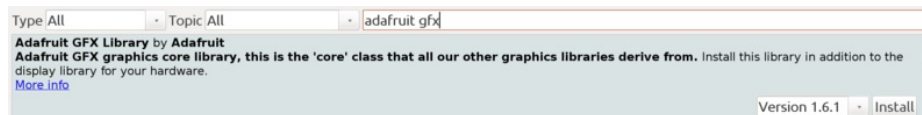
Open up the Arduino library manager:



Search for the **Adafruit LED Backpack** library and install it



Search for the **Adafruit GFX** library and install it



We also have a great tutorial on Arduino library installation at:

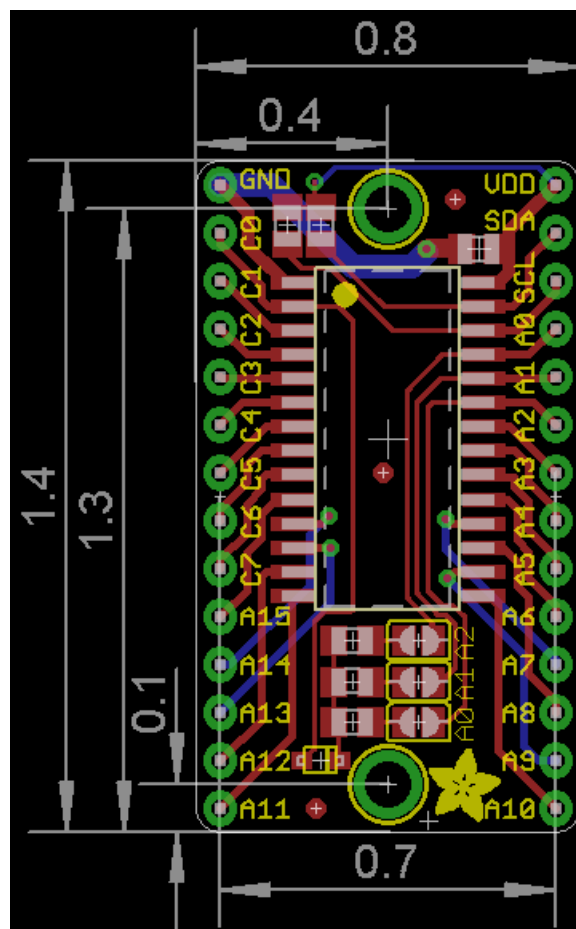
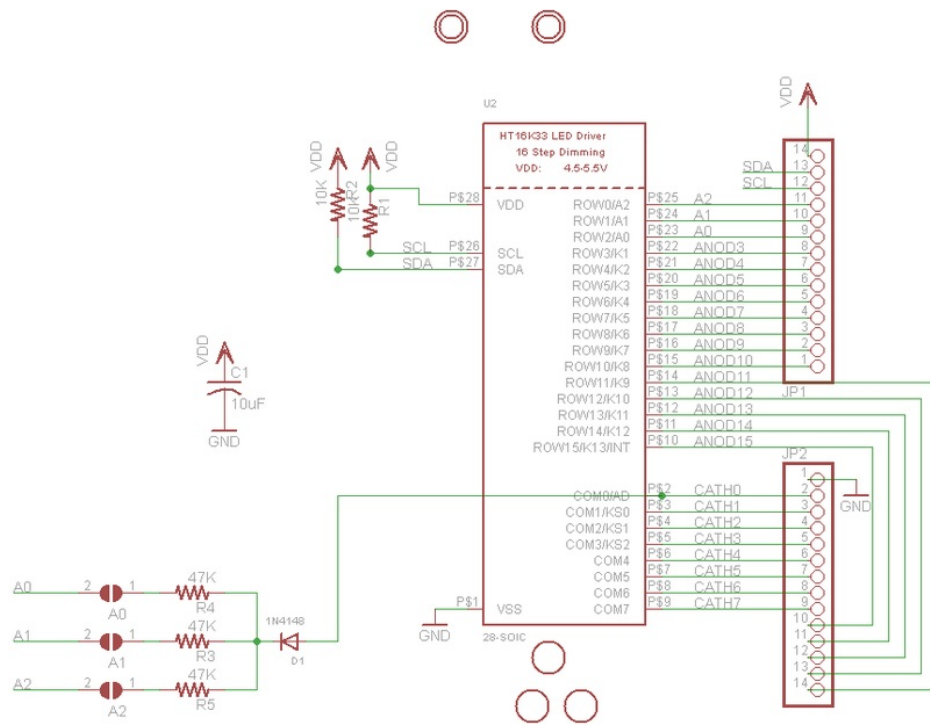
<http://learn.adafruit.com/adafruit-all-about-arduino-libraries-install-use> (<https://adafru.it/aYM>)

### Files

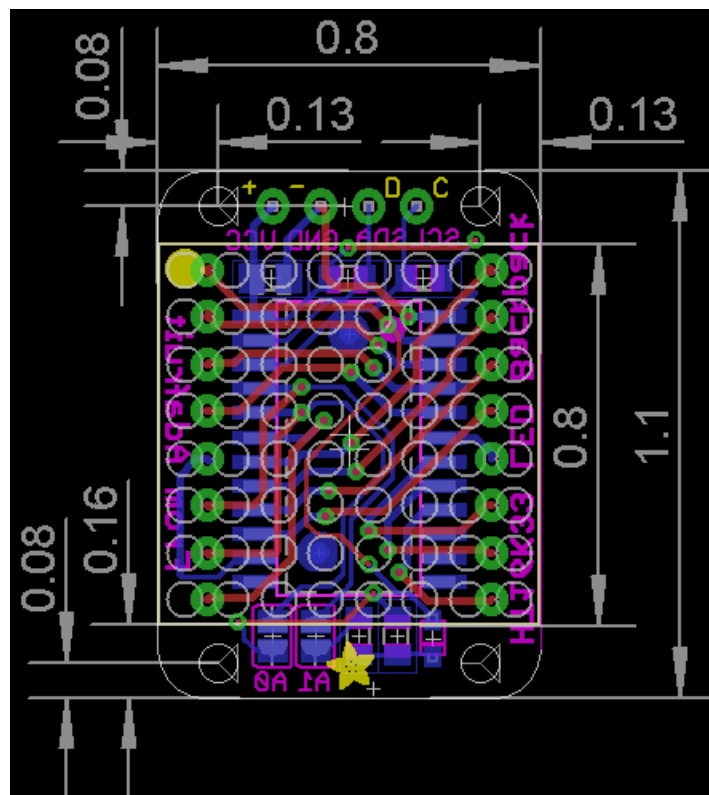
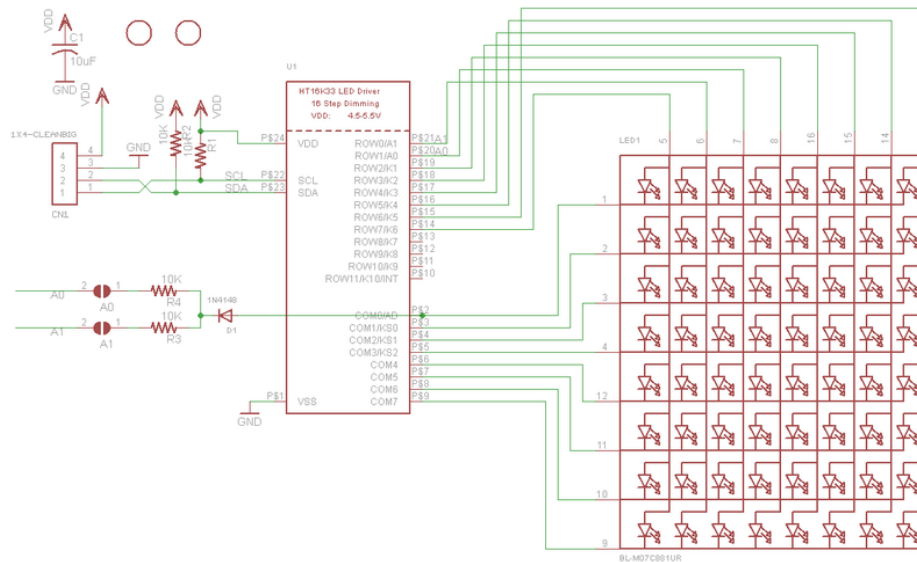
- [Fritzing objects in Adafruit Fritzing library](https://adafru.it/aP3) (<https://adafru.it/aP3>)
- [EagleCAD PCB files for all backpacks in GitHub](https://adafru.it/aLJ) (<https://adafru.it/aLJ>)
- [The backpacks all use the HT16K33 chip solely for LED driving](https://adafru.it/aMy) (<https://adafru.it/aMy>) - the mini 8x8's use the 24 pin version and the others use the 28 pin version

## HT16K33 8x16 LED Backpack Breakout

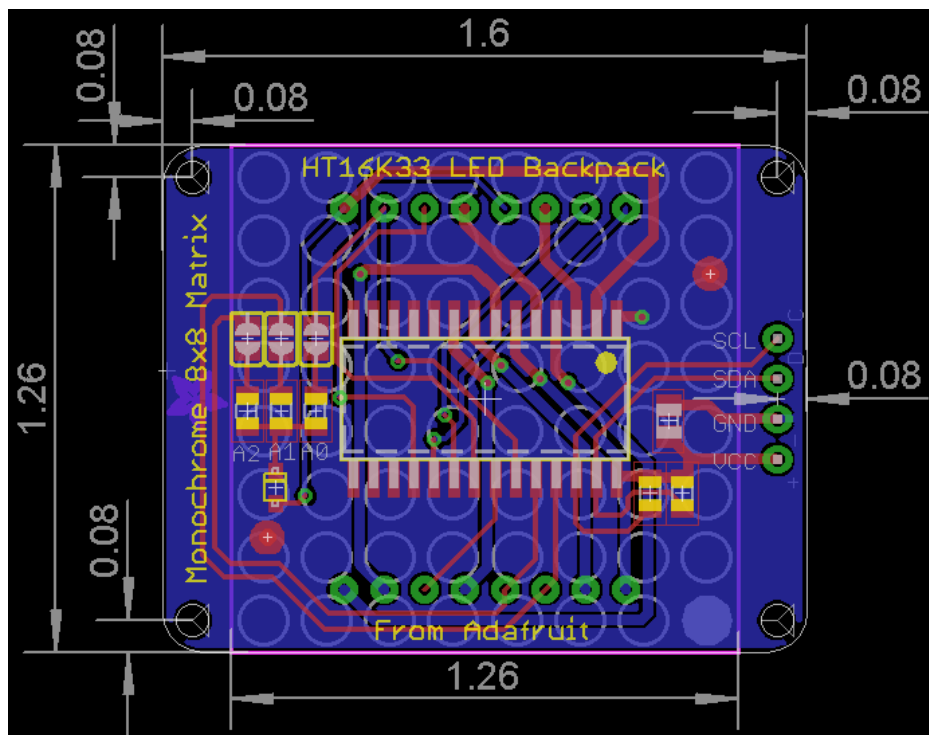
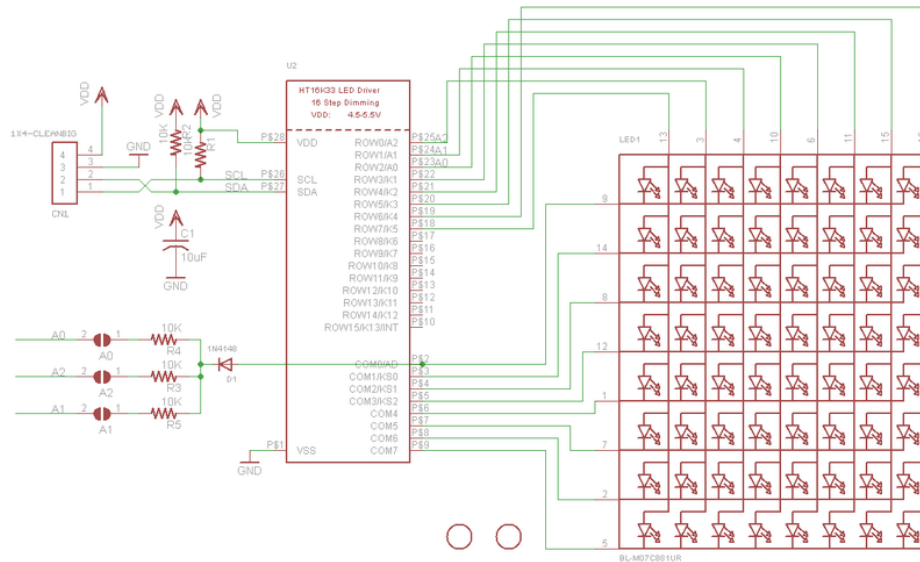
Schematic & fabrication print



8x8 0.8" LED Backpack

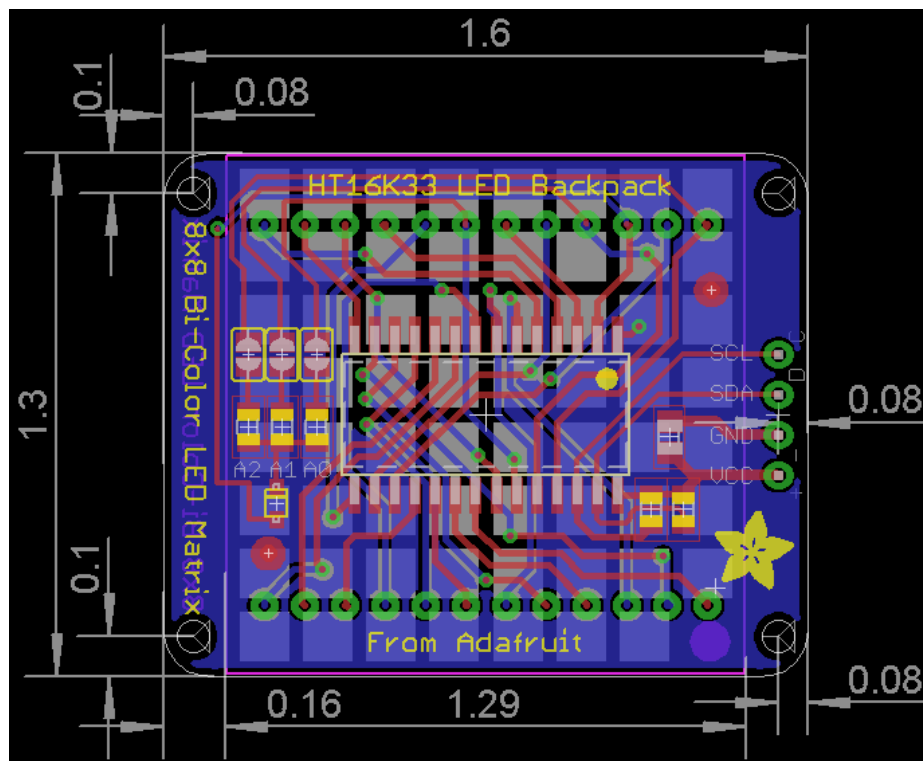
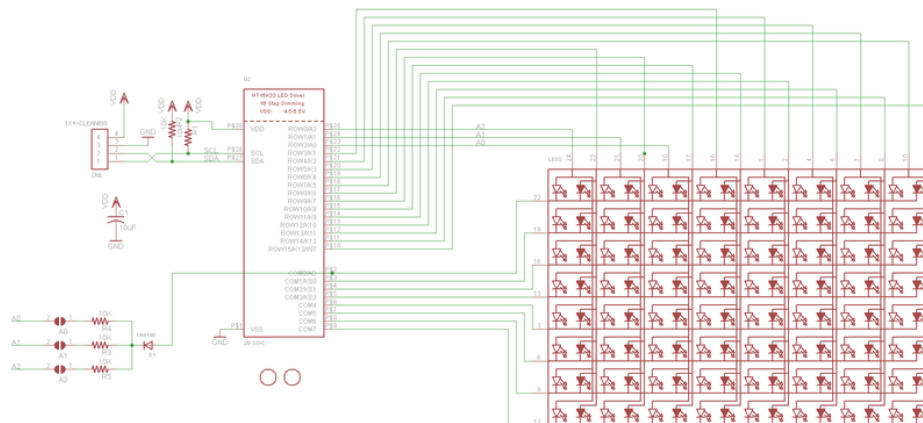


8x8 1.2" LED Backpack

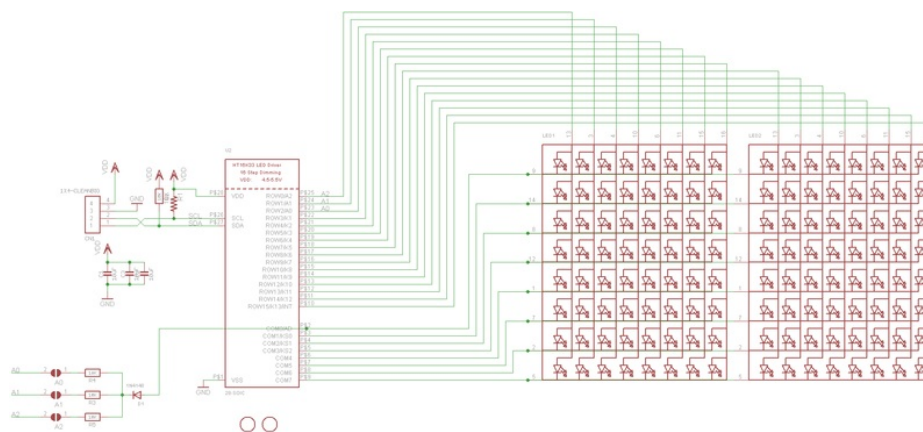


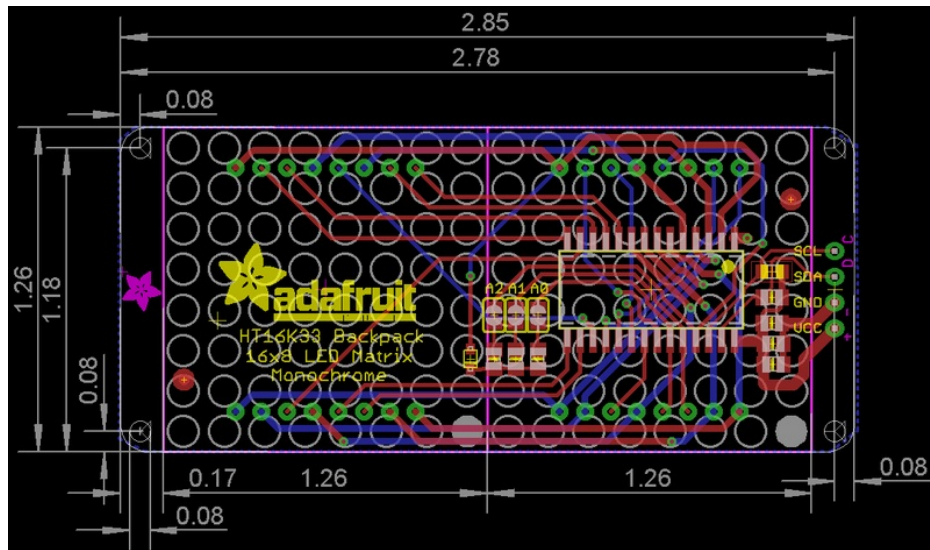
8x8 1.2" Bi-Color LED Backpack



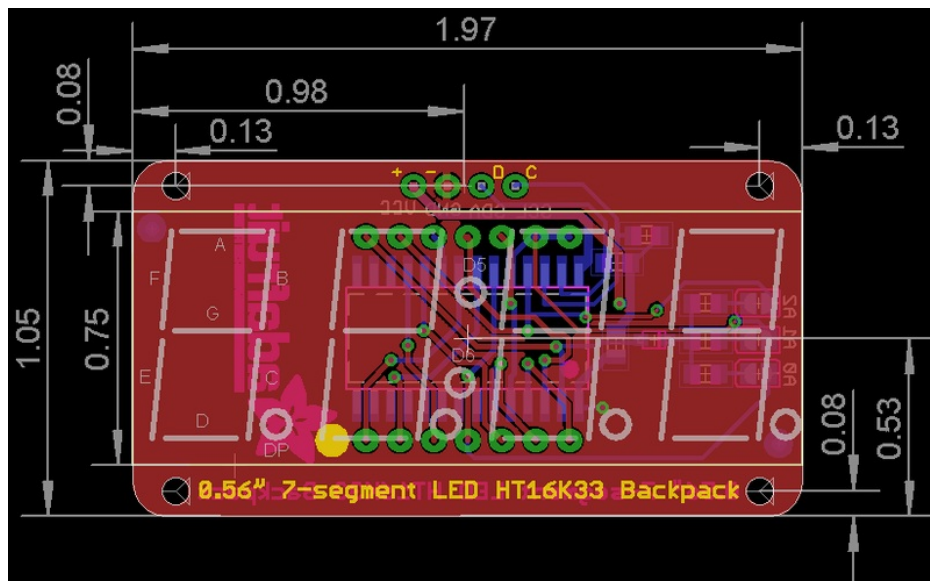
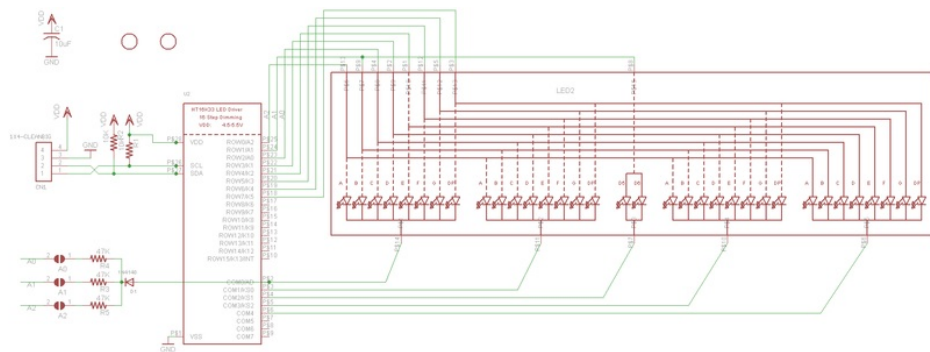


16x8 1.2" LED Backpacks

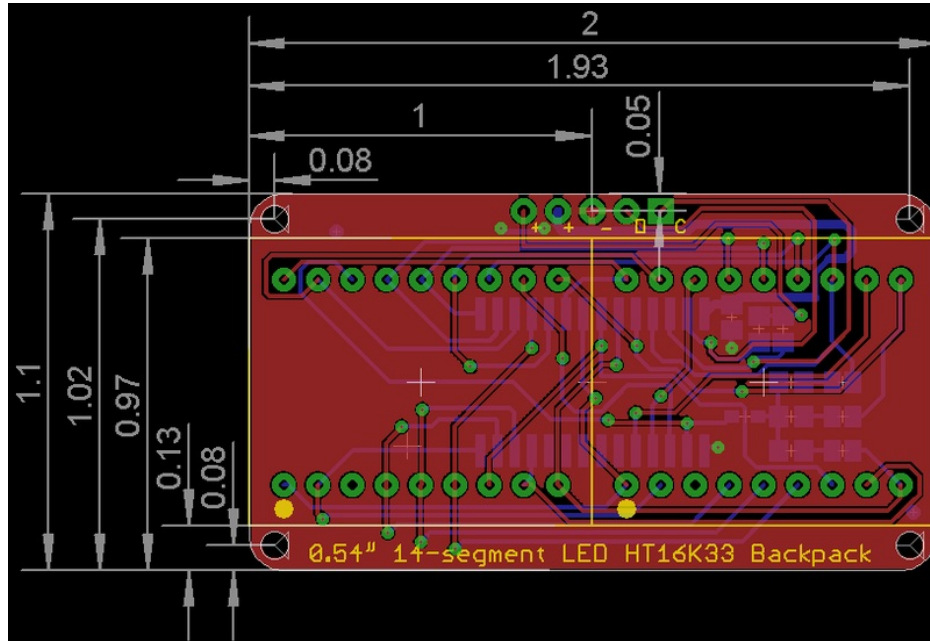
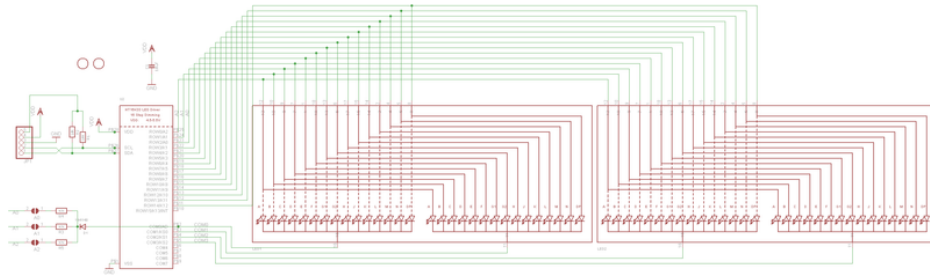




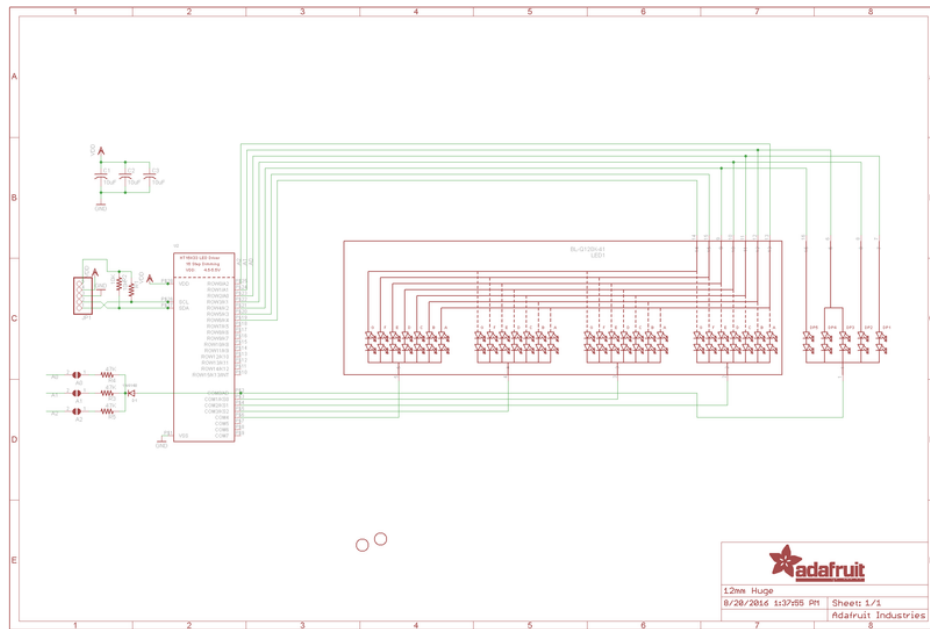
Quad 0.56" 7-Segment

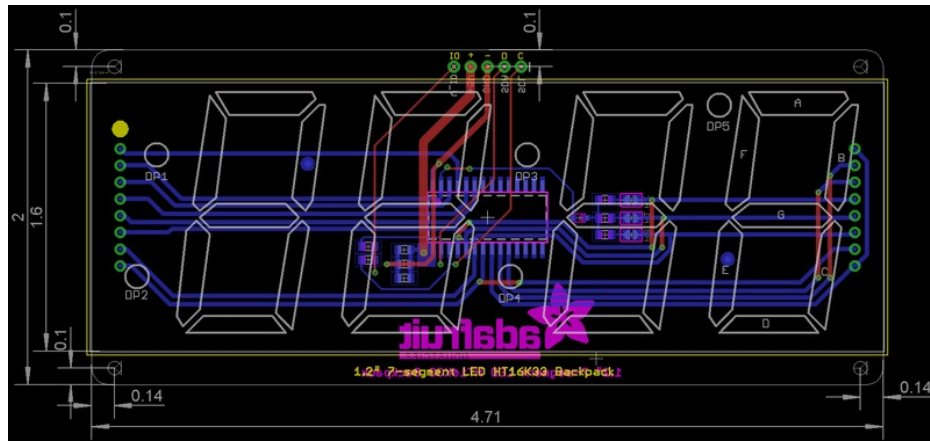


Quad 0.54" 14-segment Alphanumeric

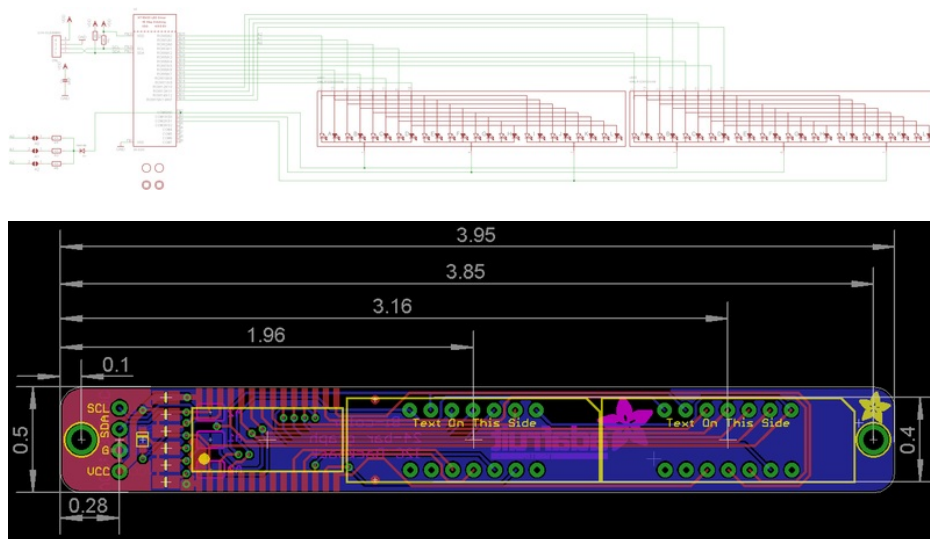


## Quad 1.2" 7-Segment





## Bicolor 24-Bargraph





# Mouser Electronics

Authorized Distributor

Click to View Pricing, Inventory, Delivery & Lifecycle Information:

[Adafruit:](#)

[879](#) [881](#) [880](#) [878](#) [870](#) [871](#) [872](#)