



Quality Products. Service Excellence.

EMI/RFI Shielded Extruded Aluminum Enclosures *1457-EMI Series*

EMI Gaskets, Heavy Duty, Optional Wall-Mounting Flanges



Key Features:

- Heavy duty extruded enclosures designed to house P.C. boards or for equipment interfacing.
- Sized for standard Eurocards.
- P.C. boards mount horizontally by sliding into internal slots extruded into the enclosure body.
- Rugged body constructed from one piece, extruded aluminum with a minimum thickness of .06" (1.5 mm).
- Extruded aluminum body includes a recessed area for labels or membrane keypad.
- Diecast aluminum end panels are rugged - yet easy to machine. Front & rear gasket is a full perimeter conductive foam/fabric made of a Ni/Cu (nickel/copper) and CPSA (conductive pressure sensitive adhesive).
- Designed to meet IP 54 ratings.
- Choice of two versions - end panels without flange or with flange (for shelf or wall mounting).

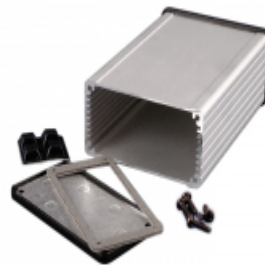


Includes:

- Two diecast aluminum end panels - painted in a durable, black satin powder paint.
- Extruded, aluminum body (choice of either clear anodized or black powder paint finish).
- Two - end plate EMI/RFI conductive gaskets.
- All hardware and self-adhesive feet.
- NOTE: Recommended screw torque is 5 lbf/in



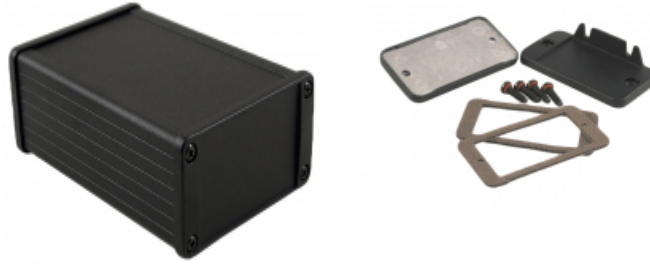
Available with black powder coat or clear anodize finish and with or without wall-



Enclosure includes extruded body, die-cast end panels, gaskets (not water-tight), and hardware. Extra end panel

mounting flanges.

kits are sold separately.



Enclosures

| EMI Shielded, No Flanges | EMI Shielded w/ Flanges | Extrusion Length | Width | Height |
|--------------------------|-------------------------|------------------|-------|--------|
| 1457C801E | 1457C802E | 3.15 | 2.32 | 1.21 |
| 1457C801EBK | 1457C802EBK | 3.15 | 2.32 | 1.21 |
| 1457C1201E | 1457C1202E | 4.73 | 2.32 | 1.21 |
| 1457C1201EBK | 1457C1202EBK | 4.73 | 2.32 | 1.21 |
| 1457J1201E | 1457J1202E | 4.73 | 3.30 | 1.12 |
| 1457J1201EBK | 1457J1202EBK | 4.73 | 3.30 | 1.12 |
| 1457K1201E | 1457K1202E | 4.73 | 3.30 | 1.73 |
| 1457K1201EBK | 1457K1202EBK | 4.73 | 3.30 | 1.73 |
| 1457L1201E | 1457L1202E | 4.73 | 4.09 | 1.26 |
| 1457L1201EBK | 1457L1202EBK | 4.73 | 4.09 | 1.26 |
| 1457N1201E | 1457N1202E | 4.73 | 4.09 | 2.15 |
| 1457N1201EBK | 1457N1202EBK | 4.73 | 4.09 | 2.15 |
| 1457J1601E | 1457J1602E | 6.30 | 3.30 | 1.12 |
| 1457J1601EBK | 1457J1602EBK | 6.30 | 3.30 | 1.12 |
| 1457K1601E | 1457K1602E | 6.30 | 3.30 | 1.73 |
| 1457K1601EBK | 1457K1602EBK | 6.30 | 3.30 | 1.73 |
| 1457L1601E | 1457L1602E | 6.30 | 4.09 | 1.26 |
| 1457L1601EBK | 1457L1602EBK | 6.30 | 4.09 | 1.26 |
| 1457N1601E | 1457N1602E | 6.30 | 4.09 | 2.15 |
| 1457N1601EBK | 1457N1602EBK | 6.30 | 4.09 | 2.15 |
| 1457T1601E | 1457T1602E | 6.30 | 6.51 | 2.15 |
| 1457T1601EBK | 1457T1602EBK | 6.30 | 6.51 | 2.15 |
| 1457T2201E | 1457T2202E | 8.66 | 6.51 | 2.15 |
| 1457T2201EBK | 1457T2202EBK | 8.66 | 6.51 | 2.15 |

Replacement End Panels

| Enclosure Part Number | End Panel Kit (No Mounting Flanges) | | End Panel Kit w/ Integrated Mounting Flanges | |
|-----------------------|-------------------------------------|------------|--|-------------|
| | 2-pack | 10-pack | 2-pack | 10-pack |
| 1457C | 1457CEP | 1457CEP-10 | 1457CEPF | 1457CEPF-10 |
| 1457J | 1457JEP | 1457JEP-10 | 1457JEPF | 1457JEPF-10 |
| 1457K | 1457KEP | 1457KEP-10 | 1457KEPF | 1457KEPF-10 |
| 1457L | 1457LEP | 1457LEP-10 | 1457LEPF | 1457LEPF-10 |
| 1457N | 1457NEP | 1457NEP-10 | 1457NEPF | 1457NEPF-10 |
| 1457T | 1457TEP | 1457TEP-10 | 1457TEPF | 1457TEPF-10 |

Data subject to change without notice

Mouser Electronics

Authorized Distributor

Click to View Pricing, Inventory, Delivery & Lifecycle Information:

Hammond:

[1457K1602E](#) [1457N1602E](#) [1457C802E](#) [1457N1202E](#) [1457N1202EBK](#) [1457N1602EBK](#) [1457C801EBK](#)
[1457K1601E](#) [1457K1202E](#) [1457N1201E](#) [1457N1601E](#) [1457K1602EBK](#) [1457C801E](#) [1457N1201EBK](#) [1457K1201E](#)
[1457C1201EBK](#) [1457K1601EBK](#) [1457C1202E](#) [1457C1201E](#) [1457K1202EBK](#) [1457N1601EBK](#) [1457K1201EBK](#)
[1457C802EBK](#) [1457C1202EBK](#) [1457L1201EBK](#) [1457J1601EBK](#) [1457L1201E](#) [1457J1201EBK](#) [1457L1202EBK](#)
[1457L1601E](#) [1457J1201E](#) [1457L1602E](#) [1457J1602EBK](#) [1457L1601EBK](#) [1457L1602EBK](#) [1457J1202E](#) [1457L1202E](#)
[1457J1202EBK](#) [1457J1602E](#) [1457J1601E](#) [1457KEPF](#) [1457NEPF](#) [1457CEPF](#) [1457KEP-10](#) [1457NEPF-10](#)
[1457KEPF-10](#) [1457CEP](#) [1457NEP](#) [1457CEP-10](#) [1457T1602E](#) [1457T1602EBK](#) [1457T2202E](#) [1457TEP-10](#)
[1457T2201EBK](#) [1457T2202EBK](#) [1457TEP](#) [1457T1601EBK](#) [1457T2201E](#) [1457TEPF](#) [1457T1601E](#) [1457TEPF-10](#)
[1457LEP](#) [1457KEP](#) [1457NEP-10](#)