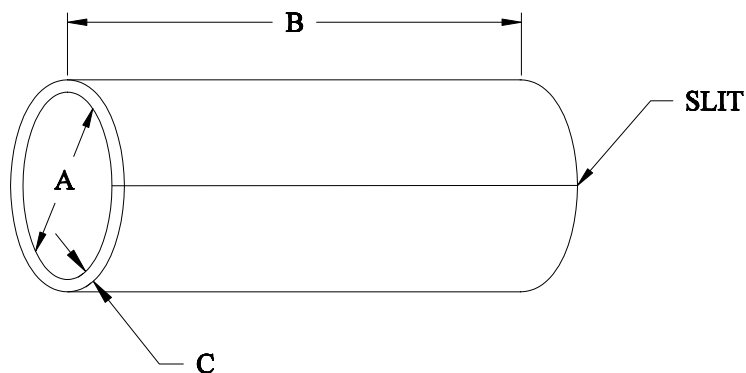


**Slit Adhesive Sleeve  
(S-1048)****Table 1: Dimensions** (inches)

| Size              | Extruded ID (A) | Cut Length (B) | Extruded Wall (C) |
|-------------------|-----------------|----------------|-------------------|
| SAS-090-1.00-1048 | .090 ± .005     | 1.000 ± .050   | 0.024 ± .005      |
| SAS-115-1.00-1048 | .115 ± .005     | 1.000 ± .050   | 0.032 ± .005      |
| SAS-160-1.00-1048 | .160 ± .005     | 1.000 ± .050   | 0.032 ± .005      |
| SAS-200-1.00-1048 | .200 ± .005     | 1.000 ± .050   | 0.035 ± .005      |
| SAS-250-1.00-1048 | .250 ± .010     | 1.000 ± .050   | 0.035 ± .005      |
| SAS-300-1.00-1048 | .300 ± .010     | 1.000 ± .050   | 0.067 ± .010      |

**Color:** Amber**Requirements:** The Silt Adhesive Sleeves shall meet all the requirements of Raychem Specification RT-1051.

Raychem reserves the right to amend this specification at any time. Users should evaluate the suitability of the product for their application.

# Mouser Electronics

Authorized Distributor

Click to View Pricing, Inventory, Delivery & Lifecycle Information:

[TE Connectivity:](#)

[SAS-250-1-1048-1X-CS7329](#)