

MICRO SWITCH
A DIVISION OF HONEYWELL-REGULATOR COMPANY,
BREEPORT, ILLINOIS
FED. MFR. CODE 91929

SWITCH-ENCLOSED

(M) 105 ML1
ISSUE 5

105 ML1

M

DRAWING NUMBER

ISSUE
X
10

REPLACES

RELEASE NO.

CHECK

REVISIONS

A	CO11247	O. M. W.	4 MAR 58
B	CO12789	M. B. F.	13 MAY 58
C	CO28064	M. B. S.	25 JUNE 69
D	CO55051-B	J. A. P.	17 DEC 84
E	CO74287	G. J. W.	22 APR 93

CHECK

CHECK

CHECK

CHECK

CHECK

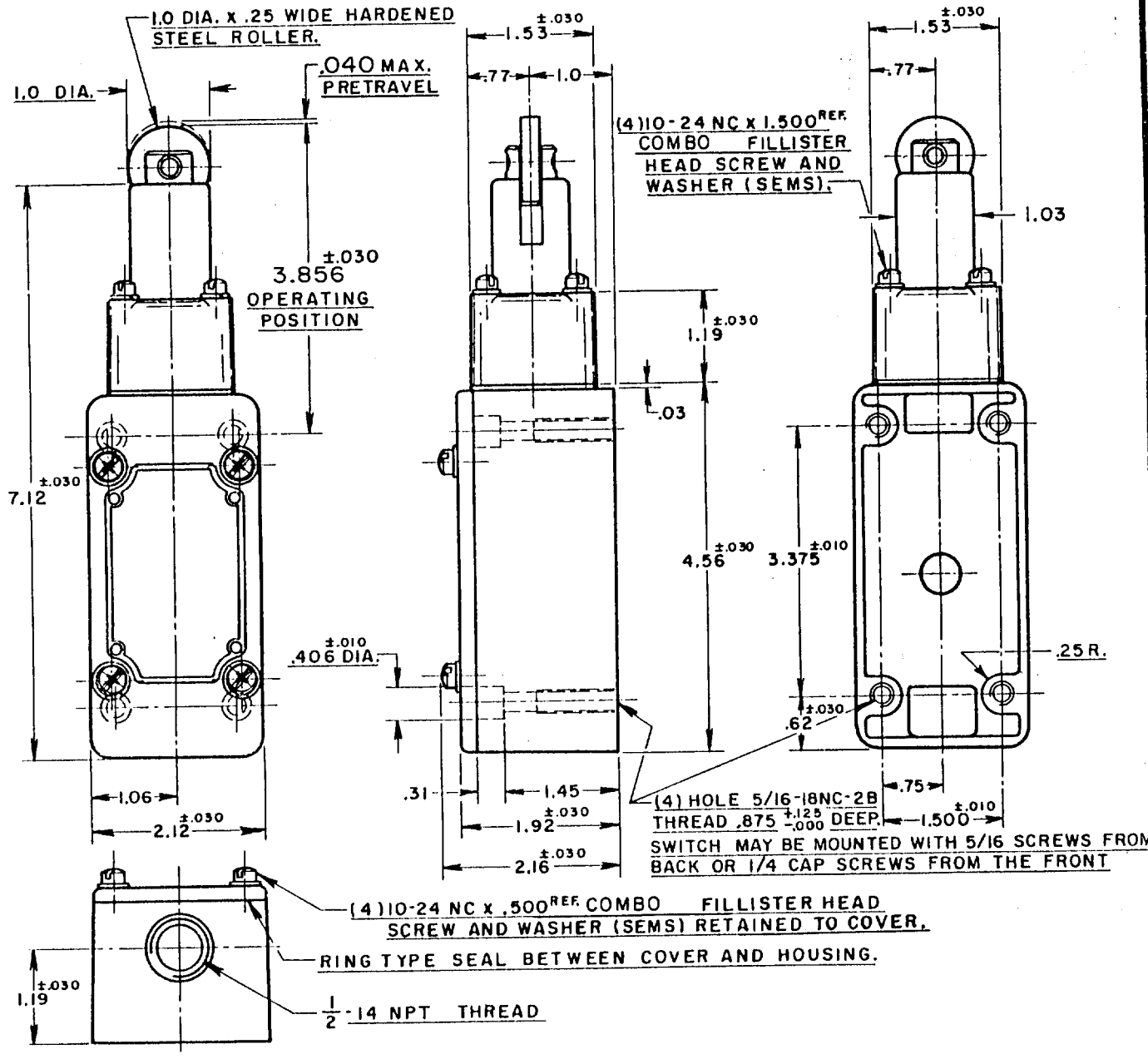
CHECK

CHECK

CHECK

CHECK

CHECK



NOTE -

- 1-ROLLER ASSEMBLY MAY BE RE-ASSEMBLED 90° FROM POSITION SHOWN.
- 2-IT IS ESSENTIAL TO PREVENT ENTRANCE OF HARMFUL AGENTS THRU THE CONDUIT OPENING TO OBTAIN THE FULL BENEFIT OF THE SEALED CONSTRUCTION PROVIDED IN THIS UNIT.

THIS DRAWING COVERS A PROPRIETARY ITEM AND IS THE PROPERTY OF MICRO SWITCH, A DIVISION OF HONEYWELL. THIS DRAWING IS NOT TO BE COPIED OR USED WITHOUT THE APPROVAL OF MICRO SWITCH.

CHARACTERISTICS
OPERATING FORCE --- 6 LBS. APPROX.
RELEASE FORCE --- 4 LBS. APPROX.
DIFFERENTIAL TRAVEL --- .020 MAX.
OVERTRAVEL --- .500 MIN.
FREE PLAY --- .010 MAX.
SWITCH-BASIC REPLACEMENT --- 1MNI

ELECTRICAL DATA	
CONTACT ARRANGEMENT TWO CIRCUIT DOUBLE THROW DOUBLE BREAK	BREAK DISTANCE
10A-120, 240, 480, OR 600 VAC 1/2 HP-120 VAC; 1 HP-240 VAC 0.8 A-115 VDC; 0.4 A-230 VDC PILOT DUTY; 600 VAC MAX	

SCALE 1/2 TO 1	
DO NOT SCALE PRINT	
UNLESS OTHERWISE SPECIFIED	
DIMENSIONS ARE IN INCHES	
TOLERANCES ARE:	
ONE PLACE (.0)	±.030
TWO PLACE (.00)	±.015
THREE PLACE (.000)	±.008
ANGLES	±
WEIGHT	

Mouser Electronics

Authorized Distributor

Click to View Pricing, Inventory, Delivery & Lifecycle Information:

[Honeywell:](#)

[105ML1](#)