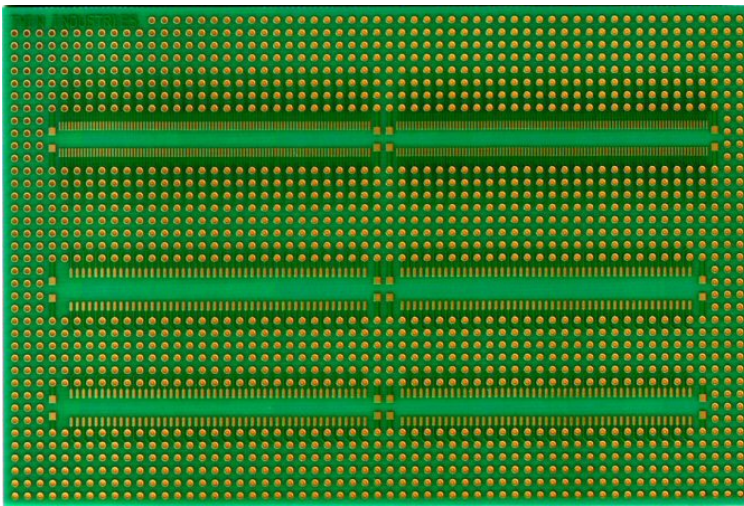




Twin Industries SMT adapter boards allow for easy prototyping and evaluation of fine-pitch SMT/SMD components and connectors. All pads breakout to dedicated plated holes. Lead-free versions can be used in lead-free process evaluation and transitions to lead-free product manufacturing.

### FEATURES:

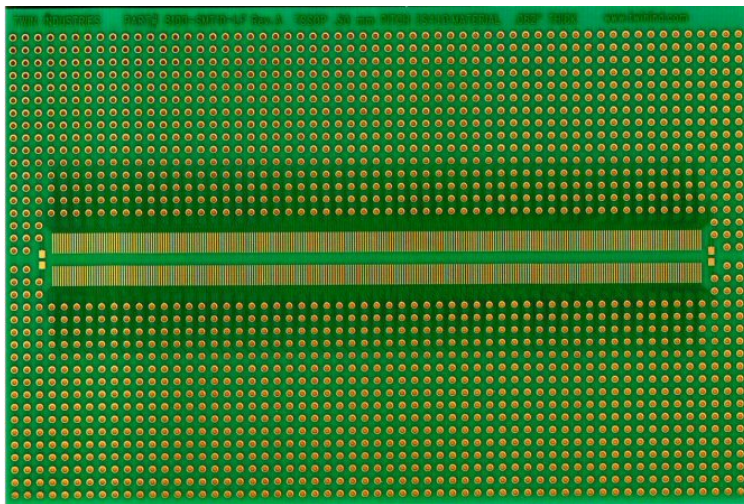
- Boards made with high-temp laminate, 0.062" thick
- Gold plating over copper
- Prototyping holes spaced on a 0.1" x 0.1" grid
- Supports SOIC med, metric, tiny (0.65mm/1.27mm) or TSSOP (0.5mm pitch)



### PART NUMBER

8100-SMT8-LF (SOIC med, metric, tiny)

Board size: 4.0" x 6.0"



### PART NUMBER

8100-SMT10-LF (TSSOP)

Board size: 4.0" x 6.0"