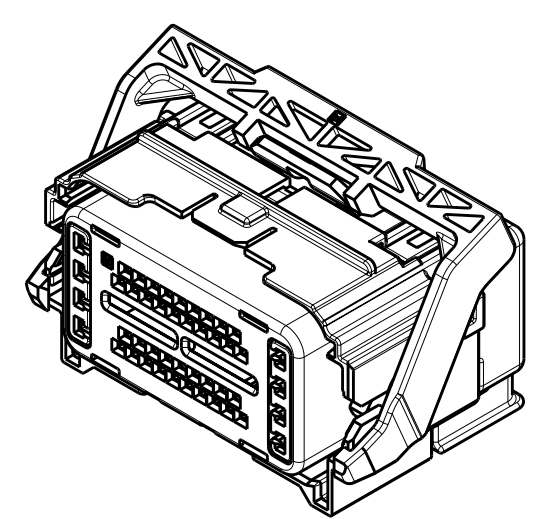
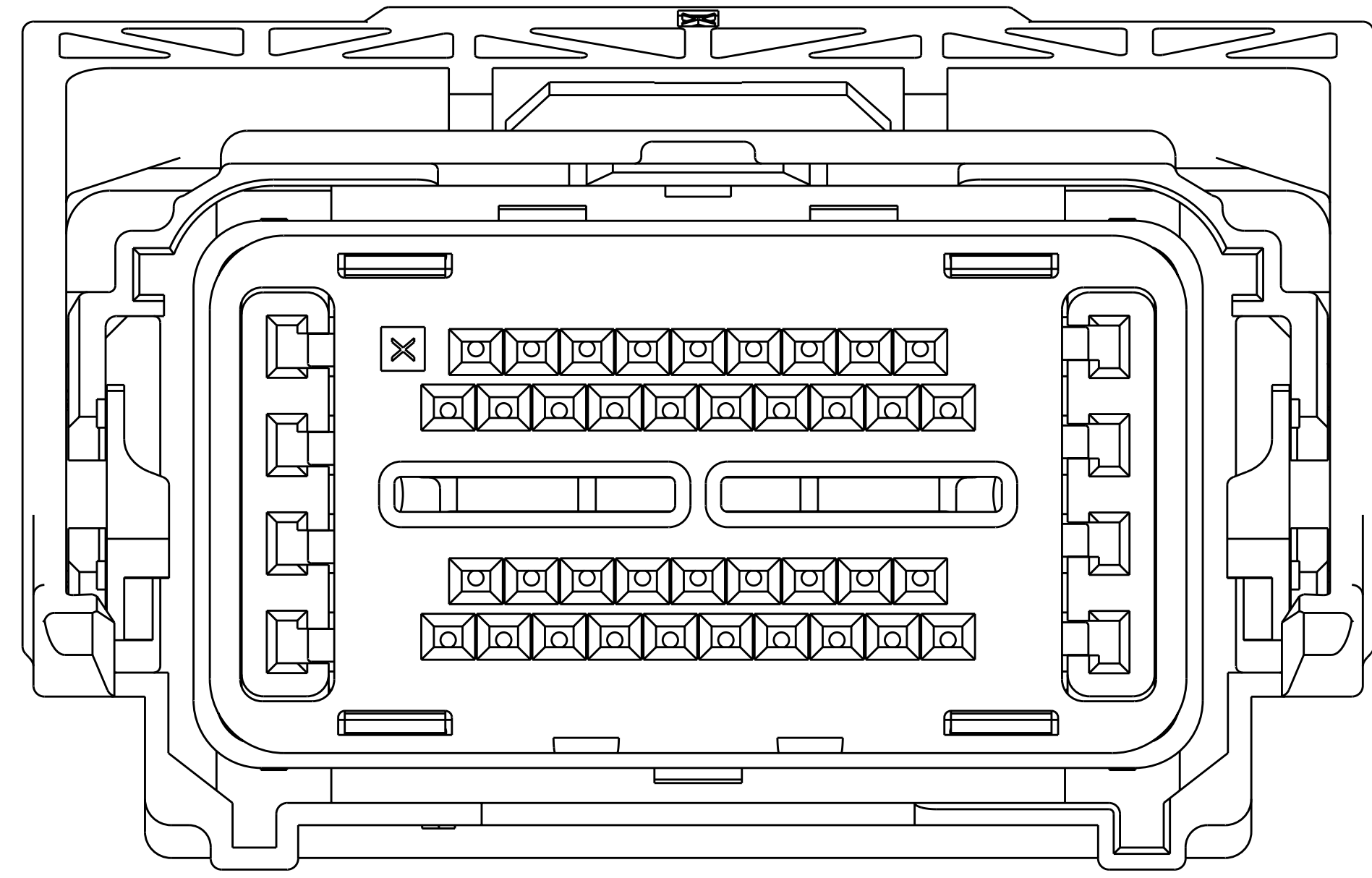
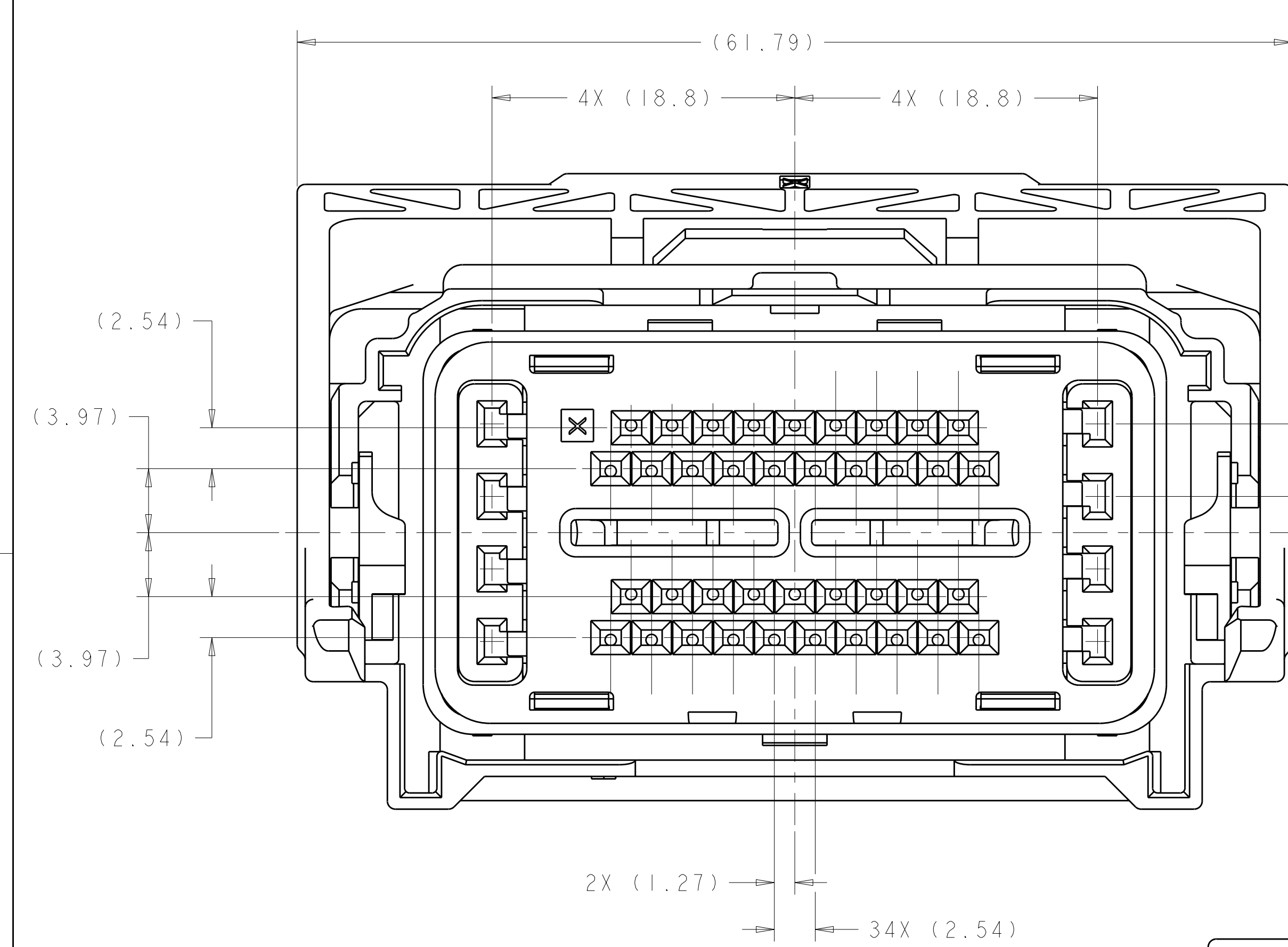
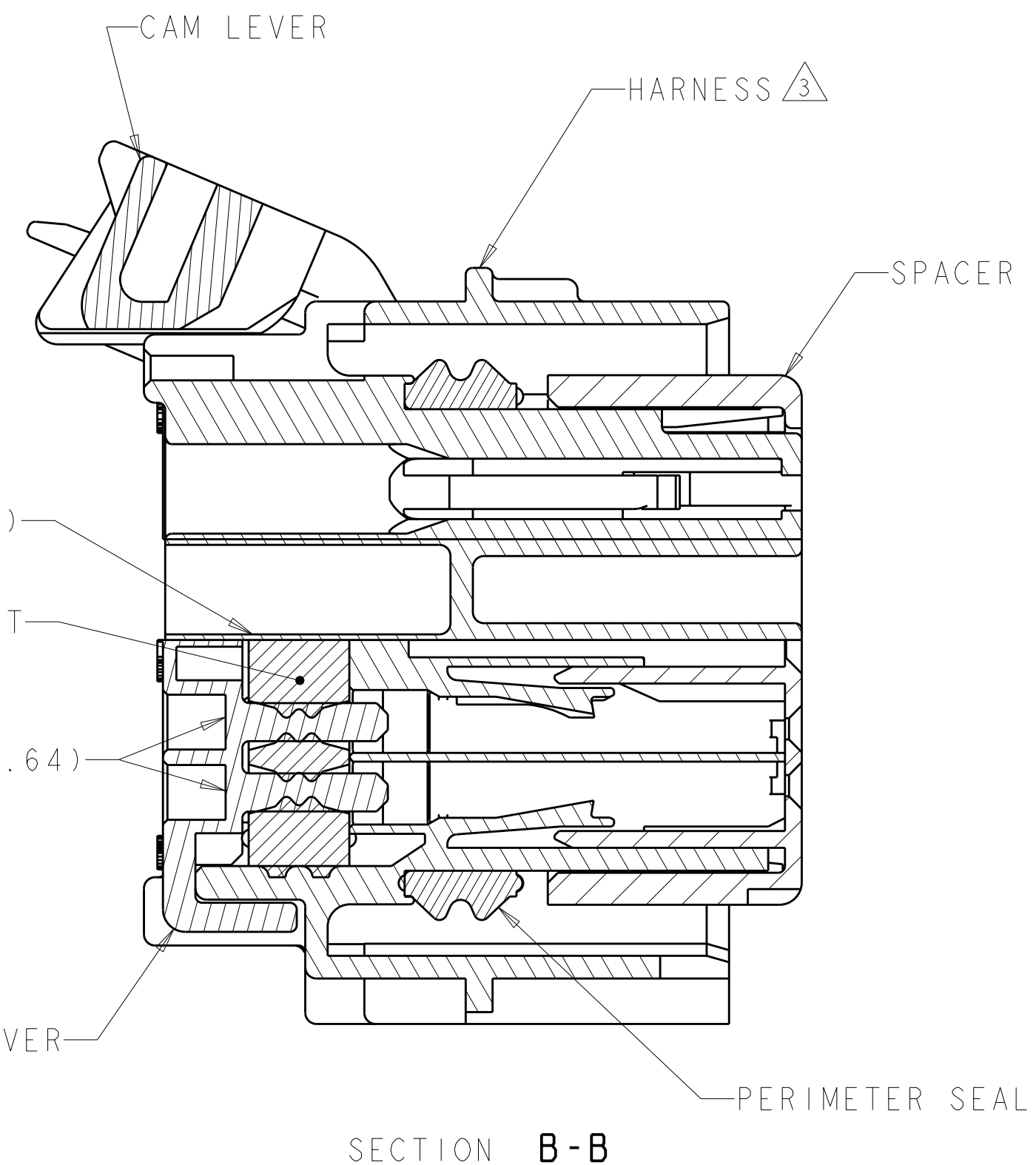
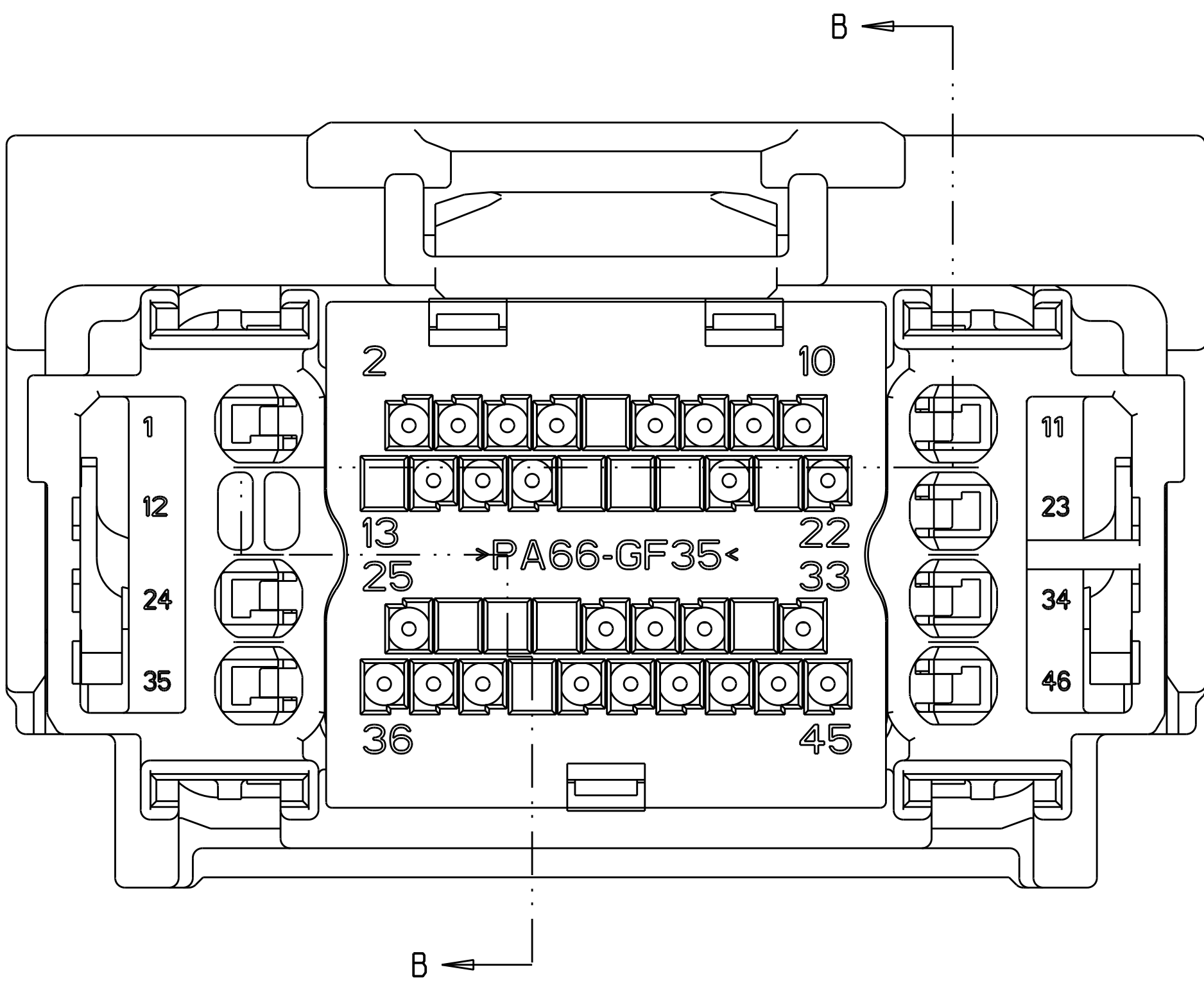
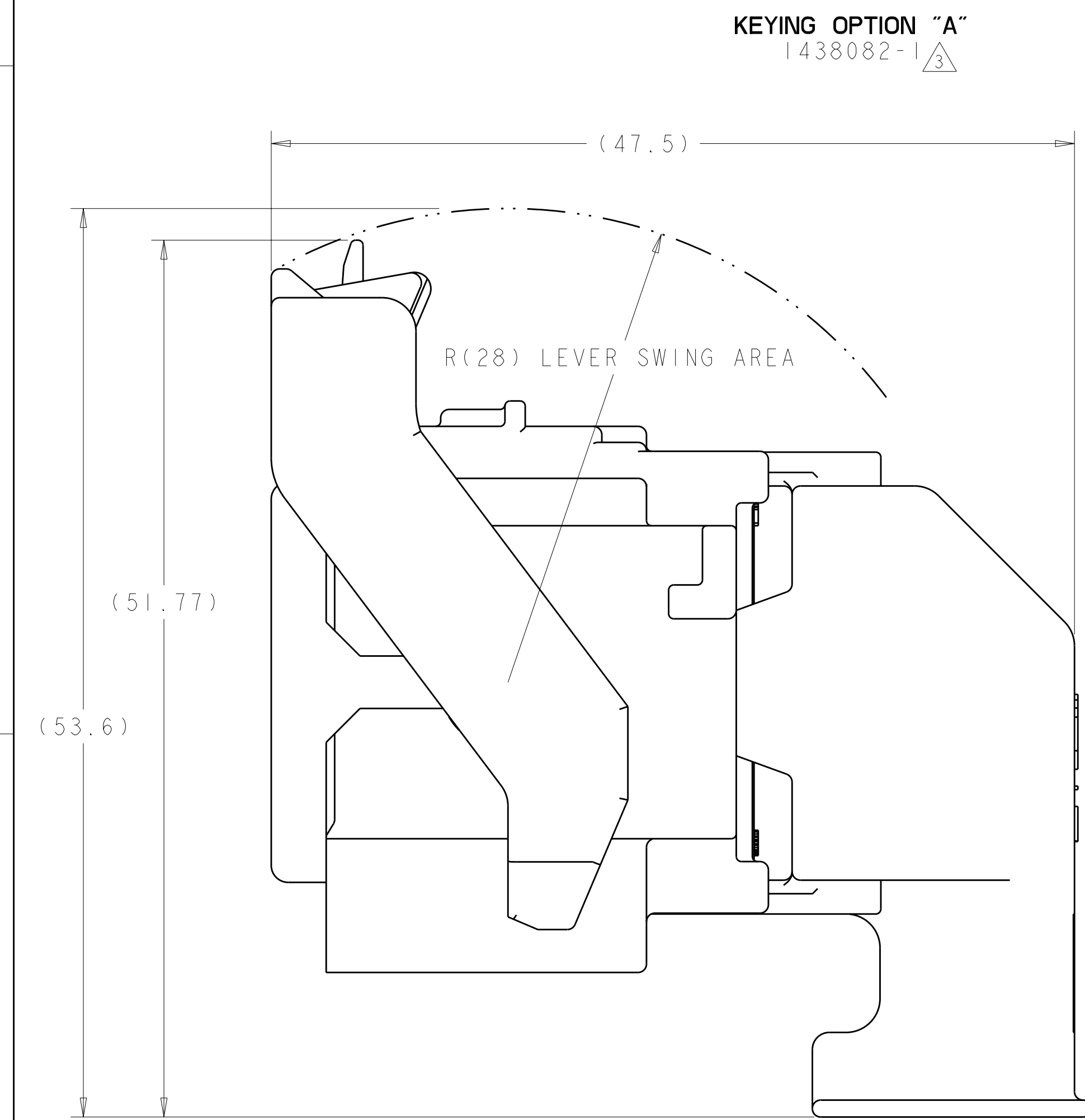


LOC		DIST		REVISIONS					
FX		00		P	LTR	DESCRIPTION	DATE	DWN	APVD
		S10				REVISED PER ECO-09-009758	23APR2009	DLD	DCM
		S11				REVISED PER ECO-09-028550	29DEC2009	DLD	DCM



SCALE 1:1



- △ MATERIAL:
- HARNESS - 35% GLASS FILLED PA66, BLACK
 - ALT MAT'L: HARNESS - 30% GLASS FILLED sPS, BLACK
 - SPACER - 40% GLASS FILLED PPS+PA66, RED
 - ALT MAT'L: 30% GLASS FILLED sPS, RED
 - ALT MAT'L: 35% GLASS FILLED PA66, RED
 - COVER - 35% GLASS FILLED PA66, BLACK
 - ALT MAT'L: COVER - 30% GLASS FILLED LCP, BLACK
 - CAM LEVER - 35% GLASS FILLED NYLON, GRAY
 - GROMMET - SILICONE, BROWN
 - PERIMETER SEAL - SILICONE, GREEN

2. CAM LEVER AND SPACER ARE SHIPPED IN PRE-LATCH POSITION.
- △ SEE PINOUT CHART ON SHEETS 2, 3 AND 4 FOR CLOSED CIRCUIT CONFIGURATIONS.
- △ CAVITIES WITH A NUMERIC SYMBOL INDICATES CLOSED TERMINAL LOCATIONS. BLANK CAVITIES INDICATE OPEN TERMINAL HOLE LOCATIONS.

SHOWN WITH CAM LEVER AND SPACER
IN LOADED POSITION WITH
OPTIONAL WIRESHIELD

SEE PINOUT CHARTS

PART NUMBER

TYCO ELECTRONICS CORPORATION

17105-3608

HARRISBURG, PA

46 WAY PCM
CONNECTOR HARNESS ASSEMBLY

00779

1438082

TYCO ELECTRONICS

46 WAY PCM
CONNECTOR HARNESS ASSEMBLY

DIMENSIONS:

mm

TOLERANCES UNLESS OTHERWISE SPECIFIED:

9 PLC ±.3

2 PLC ±0.10

3 PLC ±.1

4 PLC ±.1

ANGLES ±°

MATERIAL

SEE TABLE

FINISH

SEE TABLE

DWN R. VESTAL 01AUG2003

CHK D. STRAUSSER 01AUG2003

APVD D. STRAUSSER 01AUG2003

PRODUCT SPEC

APPLICATION SPEC

WEIGHT

CUSTOMER DRAWING

SIZE CAGE CODE DRAWING NO

00779 1438082

RESTRICTED TO

SCALE 4:1 SHEET 1 OF 5 REV S11

[illegible]



44							35		32						22					12		9	7	6				1	6-1438735-7	2LIT-14A464-SD-086											
44							35		32											12		9	7	6				1	6-1438735-3	2LIT-14A464-SD-085											
							35																							6-1438735-2	2LIT-14A464-SD-084										
		43	42		40	39		37						29					20	18		15	14			11	10	9	8	7			4	3	1	6-1438735-1	2LIT-14A464-SD-083				
45	43						38	36					31					25	24					18	17	16		14	12			7	6		2	1	5-1438735-0	2LIT-14A464-SD-082			
45	43						38	36					31					25	24						16		14	12			7	6		2	1	4-1438735-9	2LIT-14A464-SD-081				
45	43						38	36			32	31					25	24		21	19	18	17	16		14	12				7	6			1	4-1438735-8	2LIT-14A464-SD-080				
45	43					39	38	37	36				31				25	24						18	17	16		14	13	12		9	7	6		2	1	4-1438735-7	2LIT-14A464-SD-079		
				42															20	18						13		11	10							2	1	3-1438735-8	2LIT-14A464-SD-078		
				42															20	18						13		11	10								1	3-1438735-7	2LIT-14A464-SD-077		
45	43					39	38	37	36				31				25	24		21	20	19	18	17			14	13	12		9					2	1	3-1438735-6	2LIT-14A464-SD-076		
45	43						38	36					31				25	24		21	20	19	18	17			14	12								2	1	3-1438735-5	2LIT-14A464-SD-075		
			43	42		40	39		37					29					20	18					15	14			11	10	9	8	7			4	3	2	1	3-1438735-3	2LIT-14A464-SD-074
45	43					39	38	37	36				31				25	24			20	19	18	17			14	13	12		9					2	1	3-1438735-2	2LIT-14A464-SD-073		
45	43						38	36					31				25	24		21	20	19	18	17	16		14	12				7				2	1	3-1438735-1	2LIT-14A464-SD-072		
45	43					39	38	37	36				31				25	24		21	20	19	18	17	16		14	13	12		9	7				2	1	3-1438735-0	2LIT-14A464-SD-071		
45	43						38	36					31				25	24		21	20	19			16		14	12				7				2	1	2-1438735-9	2LIT-14A464-SD-070		
45	43					39	38	37	36				31				25	24		21	20	19			16		14	13	12		9	7				2	1	2-1438735-8	2LIT-14A464-SD-069		
45	43						38	36					31				25	24			20	19	18	17			14	12								2	1	2-1438735-6	2LIT-14A464-SD-068		
										33																	13							6	5				2-1438735-5	2LIT-14A464-SD-067	
45	44	43	42		40		38	37	36		33	31					24	22	21	20		18	17	16	15					9	8					2		2-1438735-4	2LIT-14A464-SD-066		
		43										31		29							18									8						2		2-1438735-1	2LIT-14A464-SD-065		
45	43						38	36	35				31				25	24		21				16		14	12					7	6		2	1	2-1438735-0	2LIT-14A464-SD-064			
45	43					39	38	37	36	35			31				25	24					18	17	16		14	13	12		9	7	6			2	1	1-1438735-9	2LIT-14A464-SD-063		
45	43						38	36	35		32	31					25	24		21	19	18	17	16		14	12					7	6			1	1-1438735-8	2LIT-14A464-SD-062			
45	43						38	36	35				31				25	24						16		14	12					7	6			2	1	1-1438735-7	2LIT-14A464-SD-061		
45	43						38	36	35				31				25	24		21	19			16		14	12					7	6		2	1	1-1438735-6	2LIT-14A464-SD-060			
45	43						38	36	35				31				25	24					18	17	16		14	12				7	6		2	1	1-1438735-5	2LIT-14A464-SD-059			
45	43					39	38	37	36	35			31				25	24		21	19	18	17	16		14	13	12		9	7	6			2	1	1-1438735-4	2LIT-14A464-SD-058			
45	43						38	36	35				31				25	24		21	19	18	17	16		14	12				7	6			2	1	1-1438735-3	2LIT-14A464-SD-057			
				42				37											20	18			15	14				11	10	9	8	7			4	3	2	1	1-1438735-2	2LIT-14A464-SD-056	
45	43							36	35				31				24		21	19			16		14	12					7	6			1	1-1438735-1	2LIT-14A464-SD-055				
							35							27																						3		1-1438735-0	2LIT-14A464-SD-054		
			43									31		29							18									9	8					2		1438735-9	2LIT-14A464-SD-053		
							35							27																		7						1438735-8	2LIT-14A464-SD-052		

TERMINAL HOLE POSITION

PART
NUMBER

FORD PART
NUMBER

PIN-OUT CHART KEYING OPTION "A"

<small>THIS DRAWING IS THE PROPERTY OF TYCO ELECTRONICS CORPORATION IT IS TO BE KEPT IN CONFIDENTIALITY AND NOT TO BE REPRODUCED OR COPIED IN ANY MANNER WITHOUT THE WRITTEN PERMISSION OF TYCO ELECTRONICS CORPORATION. IT IS TO BE RETURNED TO TYCO ELECTRONICS CORPORATION UPON REQUEST.</small>		DWN 01AUG2003 C.T. VESTAL CHK 01AUG2003 D. STRAUSSER APP'D 01AUG2003 D. STRAUSSER		 Tyco Electronics Harrisburg, PA 17105-3608	
DIMENSIONS:		TOLERANCES, UNLESS OTHERWISE SPECIFIED:		NAME 46 WAY PCM CONNECTOR HARNESS ASSEMBLY	
mm		0 PLC ±.0 1 PLC ±.03 2 PLC ±0.10 3 PLC ±.1 4 PLC ±.1 ANGLES ±.5°		PRODUCT SPEC - APPLICATION SPEC -	
				SIZE CAGE CODE DRAWING NO RESTRICTED TO A 00779 C=1438082 -	
MATERIAL -		FINISH -		WEIGHT -	
CUSTOMER DRAWING					
				SCALE 4:1 SHEET 3 OF 5 REV 1	

LOC	DIST	REVISIONS					
FX	00	P	LTR	DESCRIPTION	DATE	DWN	APVD
		-		SEE SHEET 1	-	-	-

45	44	43	42	41		38										27											7	5				7-1438735-7	2LIT-14A464-TD-086												
	44		42			38										27											7	5				7-1438735-6	2LIT-14A464-TD-085												
45	44	43	42	41		38																				7	5	4			7-1438735-5	2LIT-14A464-TD-084													
	44		42			38																				7	5	4			7-1438735-4	2LIT-14A464-TD-083													
	44	43	42	41		38																				7	5	4			7-1438735-3	2LIT-14A464-TD-082													
	44		42			38										27				22						7	5	4			7-1438735-2	2LIT-14A464-TD-081													
	44		42			38																				7	5	4			7-1438735-1	2LIT-14A464-TD-080													
		43	42														26										7	6	4	3		7-1438735-0	2LIT-14A464-TD-079												
																	26										7	6		3		6-1438735-9	2LIT-14A464-TD-078												
	44	43	42														26									7	6	4			6-1438735-8	2LIT-14A464-TD-077													
45	44	43	42	41		38																				7	5				6-1438735-6	2LIT-14A464-TD-076													
	44		42			38																				7	5				6-1438735-5	2LIT-14A464-TD-075													
	44	43	42	41		38																				7	5				6-1438735-4	2LIT-14A464-TD-074													
	44					38										27				22						8	6				6-1438735-0	2LIT-14A464-TD-073													
	44					38										27				22						8	7	6			5-1438735-9	2LIT-14A464-TD-072													
	44																26				22						6				5-1438735-8	2LIT-14A464-TD-071													
	44																26				22						7	6			5-1438735-7	2LIT-14A464-TD-070													
	44					38										27	26				22						6				5-1438735-6	2LIT-14A464-TD-069													
	44					38										27	26				22						7	6			5-1438735-5	2LIT-14A464-TD-068													
	44																26										7	6			5-1438735-4	2LIT-14A464-TD-067													
	44																26										6				5-1438735-3	2LIT-14A464-TD-066													
		43	42														26										7	6	4			5-1438735-2	2LIT-14A464-TD-065												
																	26										7	6			5-1438735-1	2LIT-14A464-TD-064													
	44	42				38										27					22						7	5			4-1438735-6	2LIT-14A464-TD-063													
	44	42				38																					7	5			4-1438735-5	2LIT-14A464-TD-062													
	44	42				38										27	26				22					8	6				4-1438735-4	2LIT-14A464-TD-061													
	44	42				38										27	26				22					8	7	6			4-1438735-3	2LIT-14A464-TD-060													
	44																26										8	7	6			4-1438735-2	2LIT-14A464-TD-059												
	44																26										8	6			4-1438735-1	2LIT-14A464-TD-058													
		43	42														26										8	7	6	5		4-1438735-0	2LIT-14A464-TD-057												
																	26										8	7	6			3-1438735-9	2LIT-14A464-TD-056												
46	45	44	43								34	33	32	31		27	25				20			16	14	13	12	10	9	8	7	6		1	3-1438735-4	2LIT-14A464-TD-055									
46	45		43								34	33	32	31		27	25				20			16	14	13	12	10	9	8	7	6		1	2-1438735-7	2LIT-14A464-TD-054									
46	45	44	43	42	40						35	34	33	32	31	28				24		21	19				12		9			5	4		1	2-1438735-3	2LIT-14A464-TD-053								
	45	44	43	42	40							33	32	31		28						21	19					9			5	4			2-1438735-2	2LIT-14A464-TD-052									
	44		42			38										27	26					22						7	5					1438735-7	2LIT-14A464-TD-051										
					40	39	38				35	34								24		21		18			13	12		9	8	7	5		1438735-6	2LIT-14A464-TD-050									
	44		42			38										27	26					22								5				1438735-5	2LIT-14A464-TD-049										
	44		42			38											26					22								5				1438735-4	2LIT-14A464-TD-048										
	44		42			38											26											7	5					1438735-3	2LIT-14A464-TD-047										
	44		42			38											26													5				1438735-2	2LIT-14A464-TD-046										
	44					38										29	28	26										7			3			1438735-1	2LIT-14A464-TD-045										
46	45	44	43	42	41	40	39	38	37	36	35	34	33	32	31	30	29	28	27	26	25	24	23	22	21	20	19	18	17	16	15	14	13	12	11	10	9	8	7	6	5	4	3	2	1
TERMINAL HOLE POSITION																												PART NUMBER		FORD PART NUMBER															
PIN-OUT CHART KEYING OPTION "B" 																																													

THIS DRAWING IS UNPUBLISHED. IT IS SUBJECT TO CHANGE WITHOUT NOTICE. THE USER SHALL BE RESPONSIBLE FOR OBTAINING THE LATEST EDITION.		DWN A. HOLT 22OCT2007		Tyco Electronics Harrisburg, PA 17105-3608	
CHK S. MANKARYOS 22OCT2007		APVD S. MANKARYOS 22OCT2007		NAME 46 WAY PCM CONNECTOR HARNESS ASSEMBLY	
DIMENSIONS: mm		TOLERANCES UNLESS OTHERWISE SPECIFIED: 9 PLC ±.3 1 PLC ±0.10 5 PLC ± 4 PLC ± ANGLES ±°		PRODUCT SPEC	
MATERIAL SEE TABLE		FINISH SEE TABLE		WEIGHT -	
CUSTOMER DRAWING				RESTRICTED TO -	
SCALE 4:1				SHEET 5 OF 5	
DRAWING NO. 00779				REV S 11	

Mouser Electronics

Authorized Distributor

Click to View Pricing, Inventory, Delivery & Lifecycle Information:

[TE Connectivity:](#)

[5-1438082-5](#)