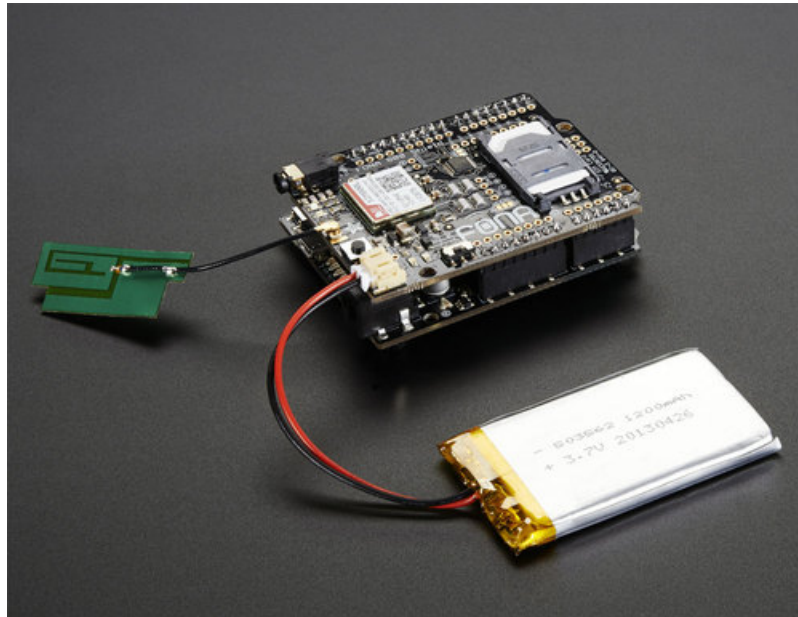




## Adafruit FONA 800 Shield

Created by lady ada



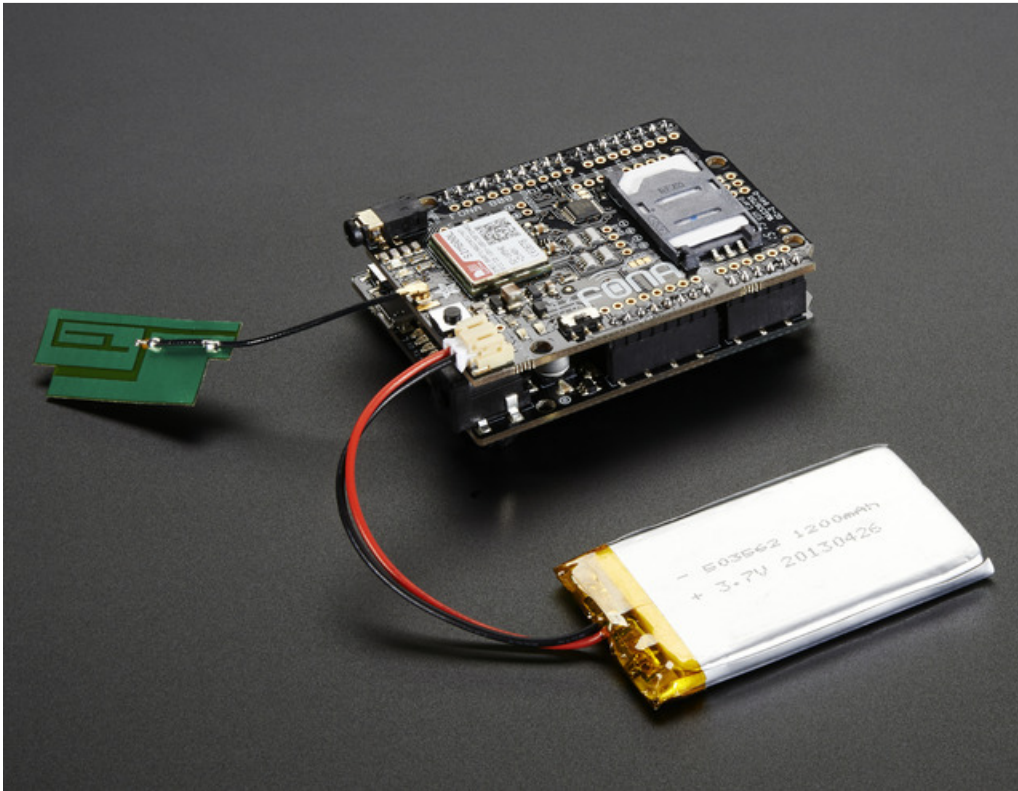
Last updated on 2018-08-22 03:48:23 PM UTC

## Guide Contents

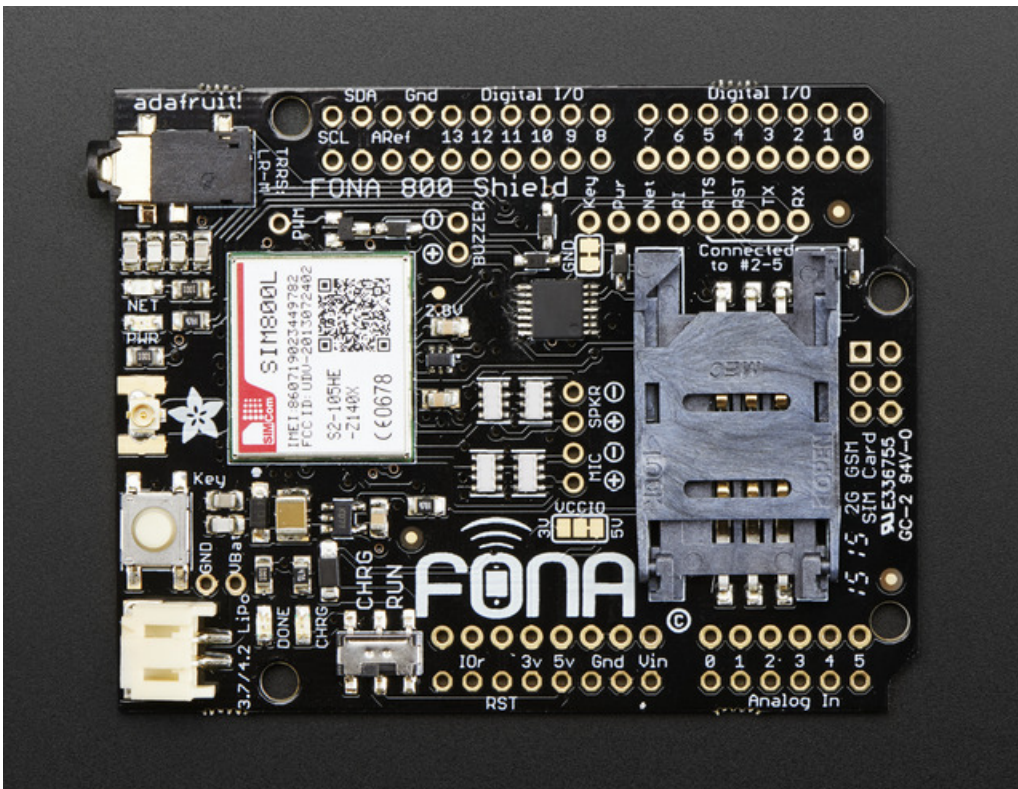
Guide Contents	2
Overview	4
Pinouts	9
Connectors	9
Charging Circuitry	10
SIM Connector	11
LEDs	12
Shield I/O Breakouts	13
Audio Breakouts	14
Other Breakout Pins	15
Obtaining a SIM	16
T-Mobile & TING	16
Some suggestions from FONA users!	17
Assembly	19
Stack Alert!	19
Attaching Header	19
Attaching Antenna & Battery	22
SIM Card	23
Arduino Test	26
Download Adafruit_FONA	26
FONA 3G Baud Adjustment	26
Load Demo	26
Using the Test Sketch	29
Hardware Test	30
Battery voltage	30
Check SIM CCID	30
Network Test	32
Check RSSI (network signal strength)	32
Checking Network Registration	32
Audio Settings & Test	33
Set and Get audio volume	33
Setting Headset or External audio	33
Playing Toolkit Tones	33
PWM Buzzer	35
PWM/Buzzer	35
Phone Calls	36
Make Phone Calls	36
SMS	37
Send and Read SMS	37
FM Radio (FONA800)	40

FM Radio (FONA 800 only)	40
Handy Commands	41
RI on SMS receipt	41
Factory Reset	41
Bluetooth commands	41
F.A.Q.s	42
Is a Lipo Battery required? Can I run the FONA off of a power supply or just the microUSB port?	42
I really want to run my FONA without a Lipoly battery!	42
Ahh! My FONA was working fine then I sent it some command and its not working right anymore?	42
I'm using FONA as a voice caller and the other person can't hear me!	42
My FONA doesn't work with Arduino Due/ADK/101/Galileo/STM32....	42
Can I charge the battery and use FONA at the same time?	42
My FONA won't turn on/respond! Or it acts flakey and auto-shuts off sometimes!	43
FONA 800/808 requires a 2G SIM, does it work with a dual 2G-3G SIM?	43
Are you sure I can't use ATT for 2G service? I'm in a T-Mobile cold spot	43
How long can FONA last on my battery?	43
How do I set the Real Time Clock on the FONA SIM?	43
I'm using a FONA 808 and the GPS commands aren't working	43
How do I switch between SMS storage on SIM and in internal FLASH?	43
I'm trying to reset the FONA with my microcontroller/computer and pulling the RESET pin low via a GPIO isnt working?	44
Downloads	46
Datasheets & App notes	46
Files	46
Schematic	47
Fabrication Print	47

## Overview

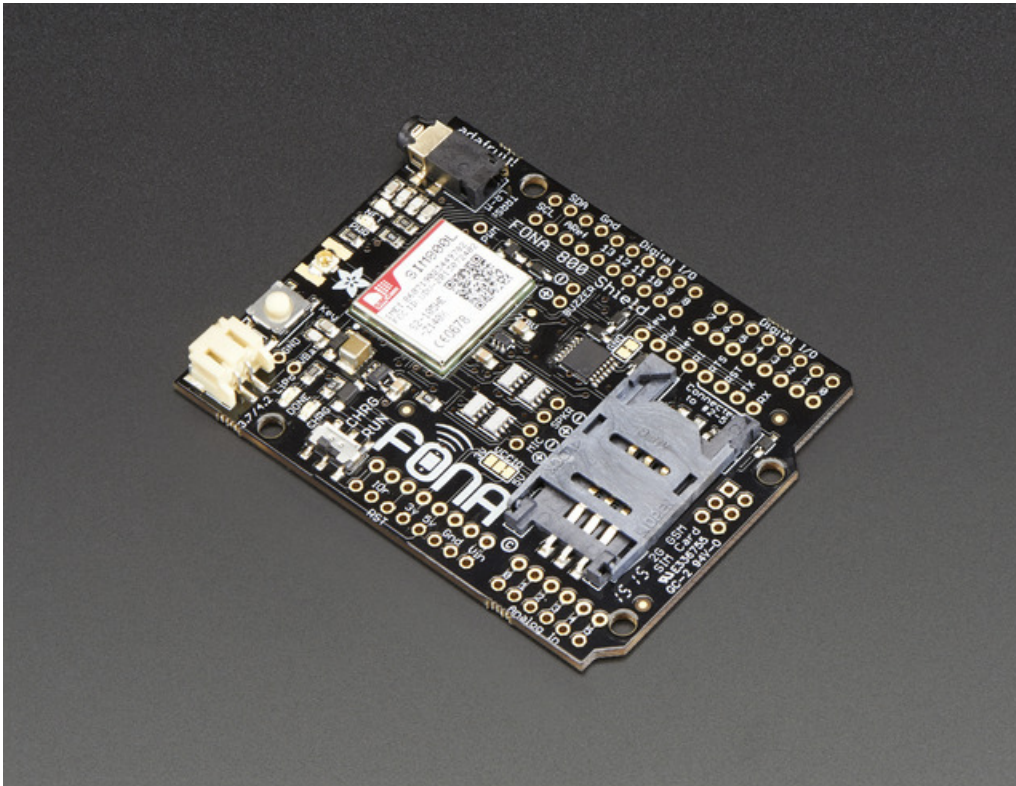


Ring, Ring! Who's that callin'? It's your Arduino! Introducing Adafruit FONA 800 Shield, an adorable all-in-one cellular phone shield that lets you add voice, text, SMS and data to your project in an easy to use pluggable shield.



This shield fits on top of any classic Arduino or compatible, and packs a surprising amount of technology into it's little frame. At the heart is a GSM cellular module (we use the latest SIM800) the size of a postage stamp. This module can do just about everything

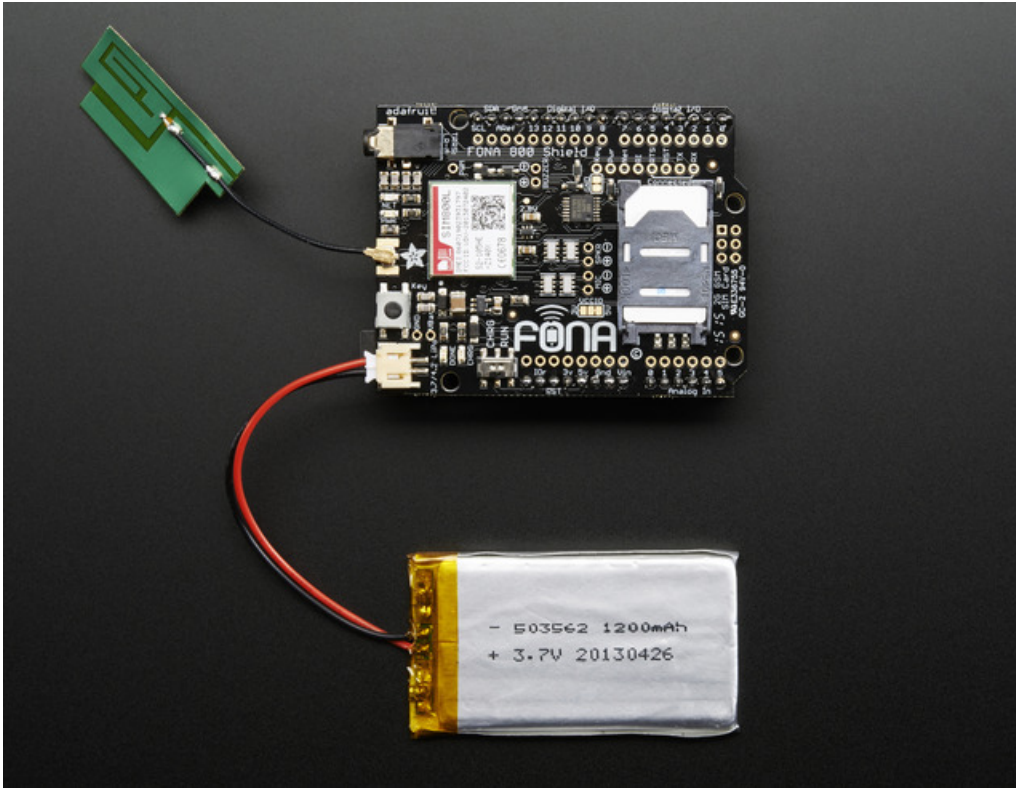
- Quad-band 850/900/1800/1900MHz - connect onto any global GSM network with any 2G SIM (in the USA, T-Mobile is suggested)
- Make and receive voice calls using a headset OR an external 8Ω speaker + electret microphone
- Send and receive SMS messages
- Send and receive GPRS data (TCP/IP, HTTP, etc.)
- Scan and receive FM radio broadcasts (yeah, we don't exactly know why this was included but it works really well)
- PWM/Buzzer vibrational motor control
- AT command interface with "auto baud" detection



Sounds delicious, right? So we plated this fine module onto a shield with all the extras you need to make your next project shine

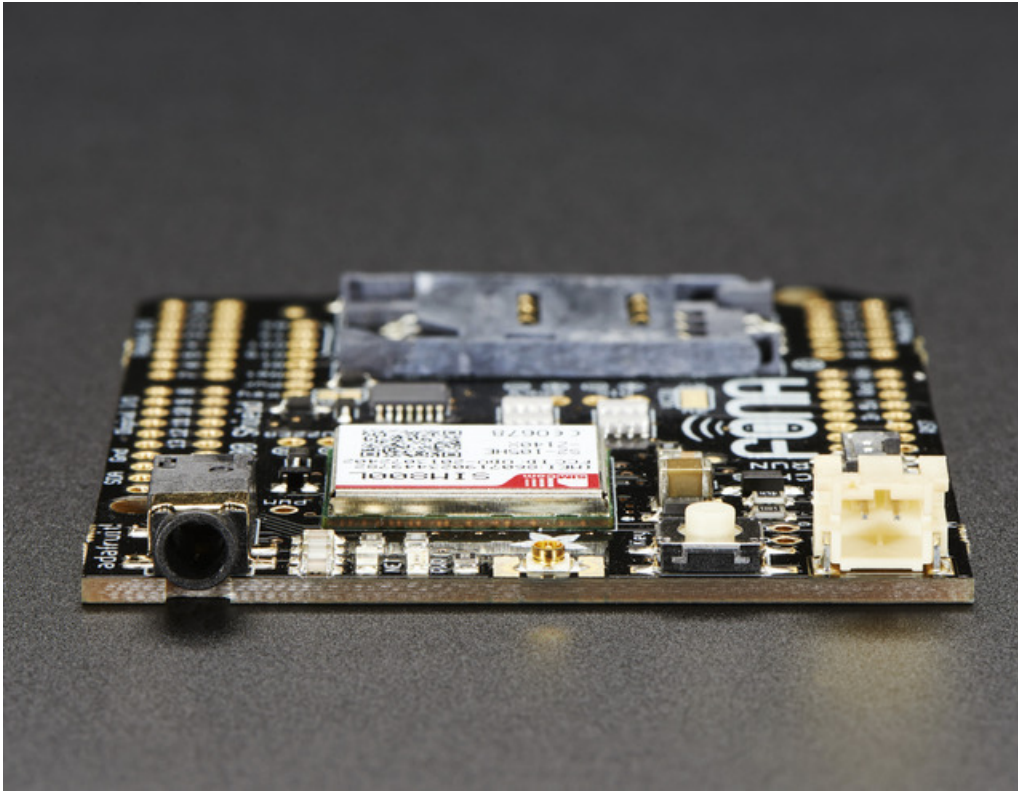
- Onboard LiPoly battery charging circuitry so you can take your project on the go. [Use any 500mAh+ LiPoly or Lilon battery \(https://adafru.it/dhK\)](https://adafru.it/dhK) and recharge via the Arduino when necessary. Two LEDs let you know when its charging and done. You can then flip the switch and use the battery to run your circuit!
- [Standard 4-pole TRRS headphone jack. Use any 'Android' or 'iPhone'-compatible headset with mic \(https://adafru.it/fbS\)](https://adafru.it/fbS)
- Breakouts for [external 8Ω speaker \(https://adafru.it/fbT\)](https://adafru.it/fbT) and [electret mic \(https://adafru.it/fbU\)](https://adafru.it/fbU) if you don't want to use a headphone
- Level shifting circuitry to make it Arduino-safe
- [Vibrational motor \(buzzer\) \(https://adafru.it/fbV\)](https://adafru.it/fbV) driver so you can have noiseless notifications
- uFL connection for [external antenna \(https://adafru.it/fbL\)](https://adafru.it/fbL)
- Indicator LEDs for power and network connectivity

- Any standard 2G SIM slides into a secure connector(<https://adafru.it/fbW>)

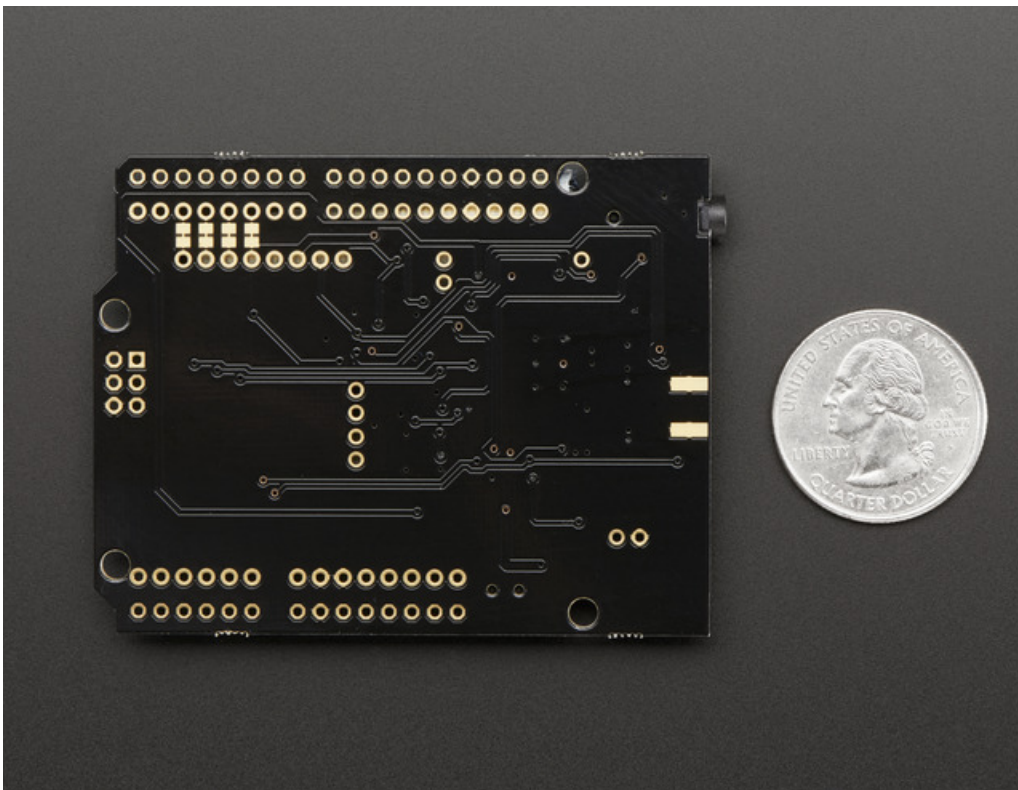


On its own, this shield can't do anything. It requires a microcontroller like an Arduino to drive it! You will also need some required accessories to make FONA work. **These are not included!**

- **SIM Card!** A 2G Mini SIM card is required to do anything on the cellular network. US AT&T no longer sells 2G SIMs and will shut off their 2G network, so [for American customers we recommend any T-Mobile or reseller \(TING, SIMPLE mobile, etc\) that uses the T-Mobile network.](https://adafru.it/fbW) (<https://adafru.it/fbW>)
- **Lipoly Battery** - 500mAh or larger! This [500mAh](https://adafru.it/drL) (<https://adafru.it/drL>) battery, or this [1200mAh](http://adafru.it/258) (<http://adafru.it/258>) will work great.
- **External Antenna** - [This slim uFL antenna works great!](https://adafru.it/fbL) (<https://adafru.it/fbL>)



Each order comes with one tested and assembled FONA shield and a stick of 0.1" male header. Required Arduino, SIM card, battery, antenna and other accessories are not included! Some light soldering is required to put the headers onto the shield. You can also grab some [stacking headers if you would like to stack a shield on top \(https://adafruit.it/dsu\)](https://adafruit.it/dsu)

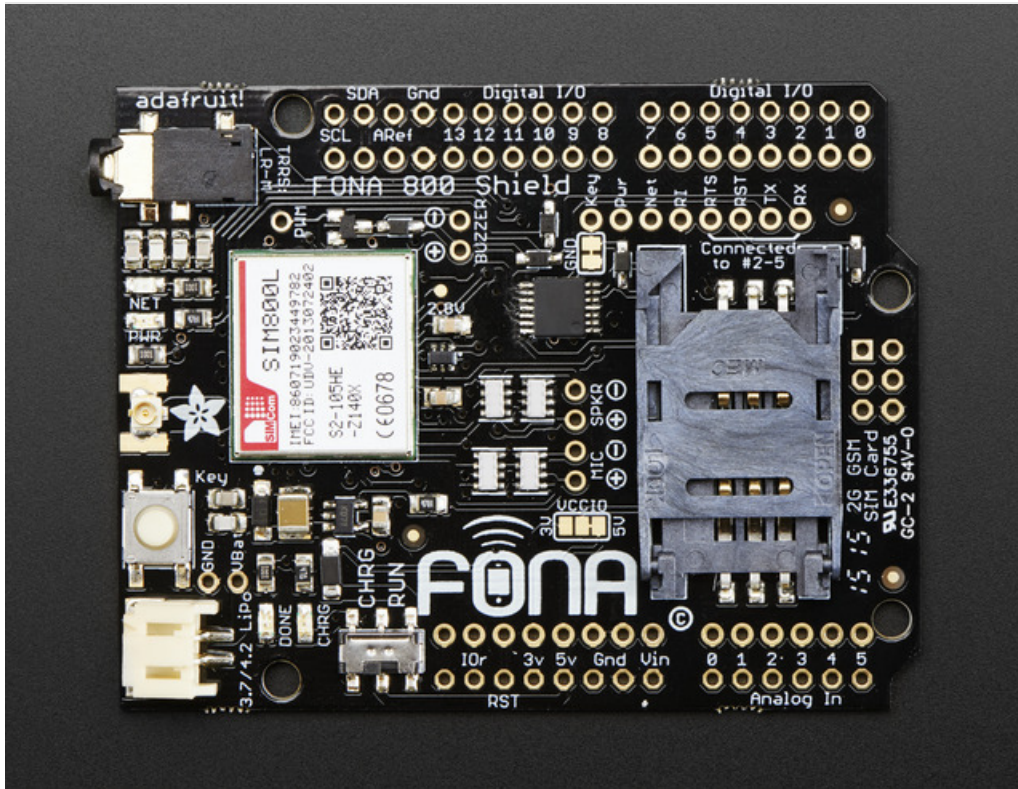


There's also some recommended accessories. They are not required but chances are you'll want them!

- **TRRS 4-Pole Headset** - Any 'iPhone' or 'Android' compatible (but not iPhone original) should work. We tried about 10 different ones, and basically the more expensive ones are more comfortable and louder but our official iPhone headset mic did not work. (<https://adafru.it/fbS>)
- **External Mic & Speaker** - If you want to talk directly to your FONA, an electret mic (<https://adafru.it/dDa>) and mini 8 ohm speaker (<https://adafru.it/dDb>) will do quite nicely.
- **Vibrating motor** - the FONA can drive this directly, just solder a mini vibrating motor disc in! (<https://adafru.it/dDc>)



## Pinouts

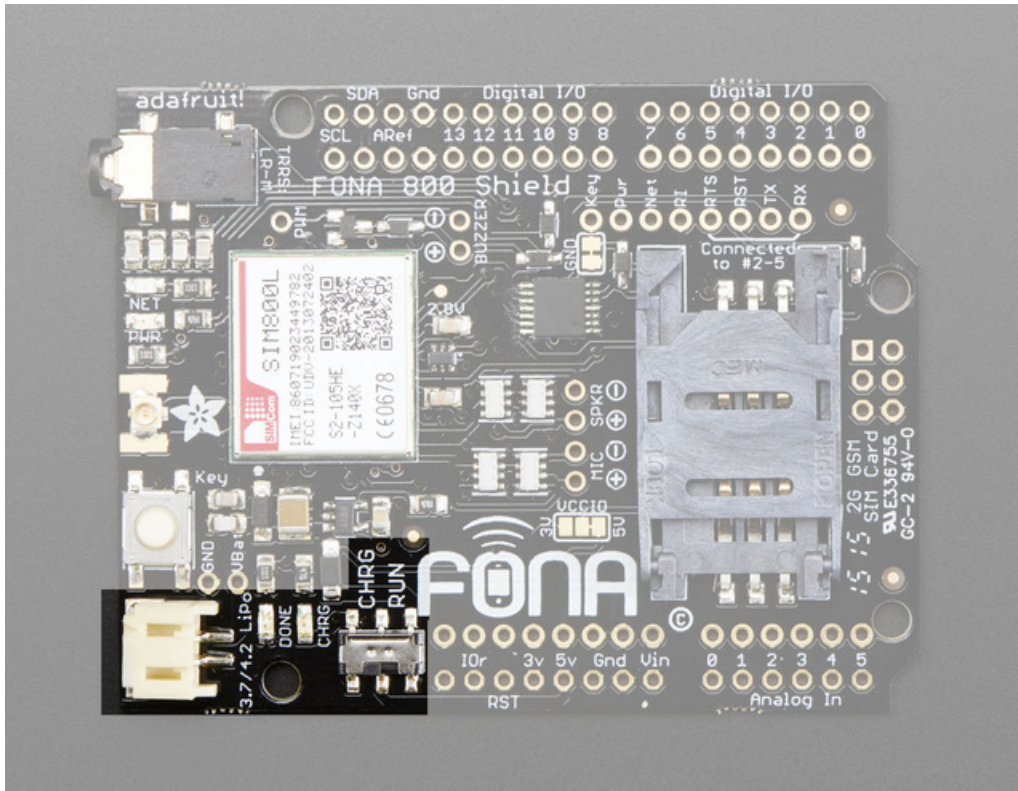


There's a lot going on in this shield, we basically stuffed an entire phone in here! So let's go piece by piece on what you get in a shield

## Connectors

There's three external connectors along the left side, from the top, a headphone jack, a uFL connector and a 2 pin JST-PH

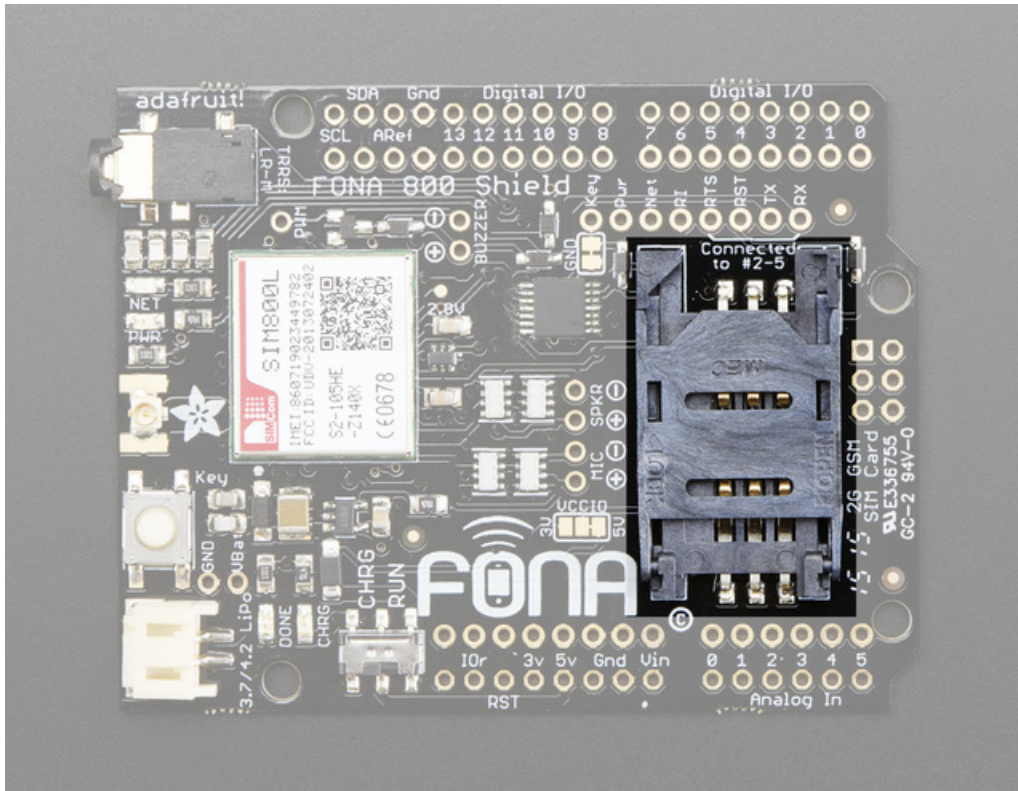
- **Headset jack** - this is a 'standard' TRRS 3.5mm phone headset jack with stereo earphone and mono microphone. Any 'iPhone' or 'Android' compatible (but not iPhone original) should work. We tried about 10 different ones, and basically the more expensive ones are more comfortable and louder but our official iPhone headset mic did not work for unknown reasons. Sleeve is Mic+, first ring is ground, then the second ring and tip are for stereo audio. The module does not have stereo out so we just tied both together.
- **uFL RF connector** - This is the Antenna connector, an antenna is required to use the FONA shield! You can either use a uFL GSM antenna like this (<https://adafru.it/fbL>), or use a uFL to SMA adapter (<https://adafru.it/fbM>) and then an SMA antenna (<https://adafru.it/fbN>)
- **JST 2-pin** - this is the battery input connector. It works with any of our Lipoly batteries but since the charge rate is 500mA (and the cellular module can spike high current draw!) we suggest our [500mAh \(https://adafru.it/drL\)](https://adafru.it/drL) or [1200mAh \(http://adafru.it/258\)](http://adafru.it/258) batteries. You can also connect a JST cable here if you have other plans.



## Charging Circuitry

A lipo battery is required to run the FONA shield, as there's up to 2A mini-spikes during cellular connectivity. To make it easy to keep the battery charged, there's charging circuitry onboard. The battery is kept topped-up by the 5V Arduino pin. We charge at a 200mA rate. You can check the status by looking at the **CHRG** and **DONE** LEDs. Charging occurs whenever the switch is set to **CHRG**

You can also run the Arduino + Shield off the battery. It will run at a lower-than-5V level, around 3.7V or so. It's a under the common 5V voltage so if you are reading analog voltages and expecting 5V note that those numbers will be off, but for digital usages, it tends to be just fine. To run the Arduino+Shield off of LiPoly, set the switch to **RUN**

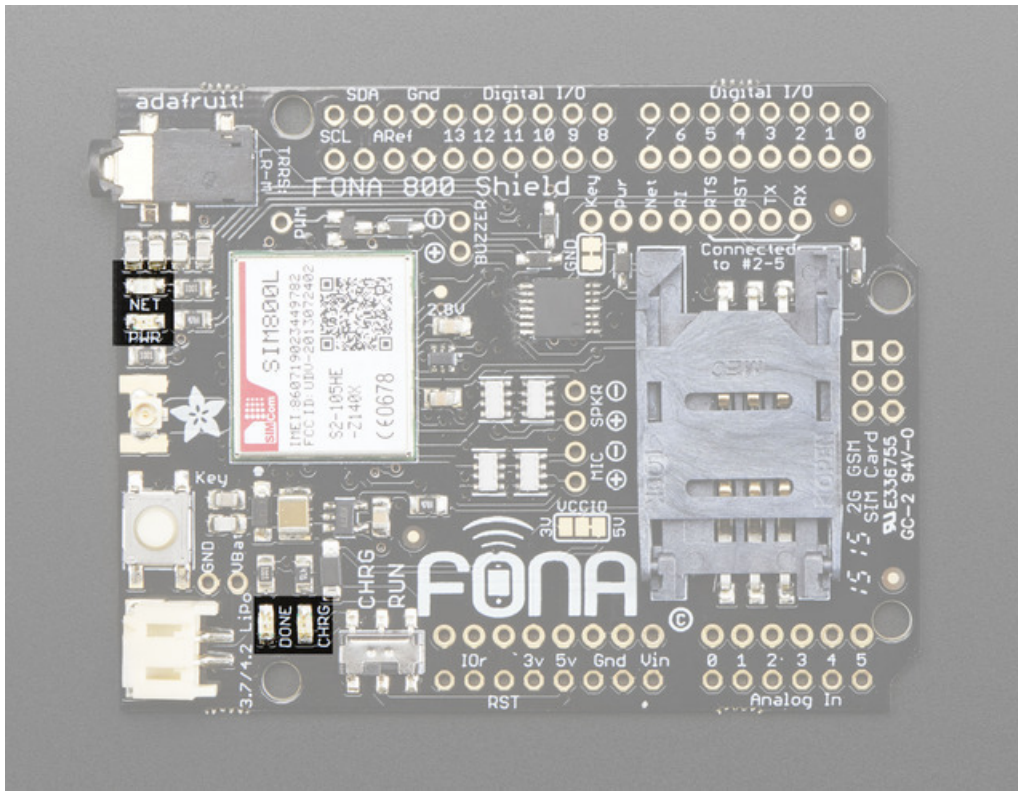


## SIM Connector

A 2G Mini SIM card is **required** to use the module. Nearly any cell phone shop can sell you a SIM card. It must be a 2G GSM card. AT&T in the US does not sell these anymore! They are shutting down their GSM network, and only T-mobile sells and supports a GSM network. If you are in another country, chances are you can just ask for a GSM 2G card. [For USA customers, we have a known-working TING SIM card which has a great billing system and works very well! \(https://adafru.it/fbO\)](https://adafru.it/fbO)

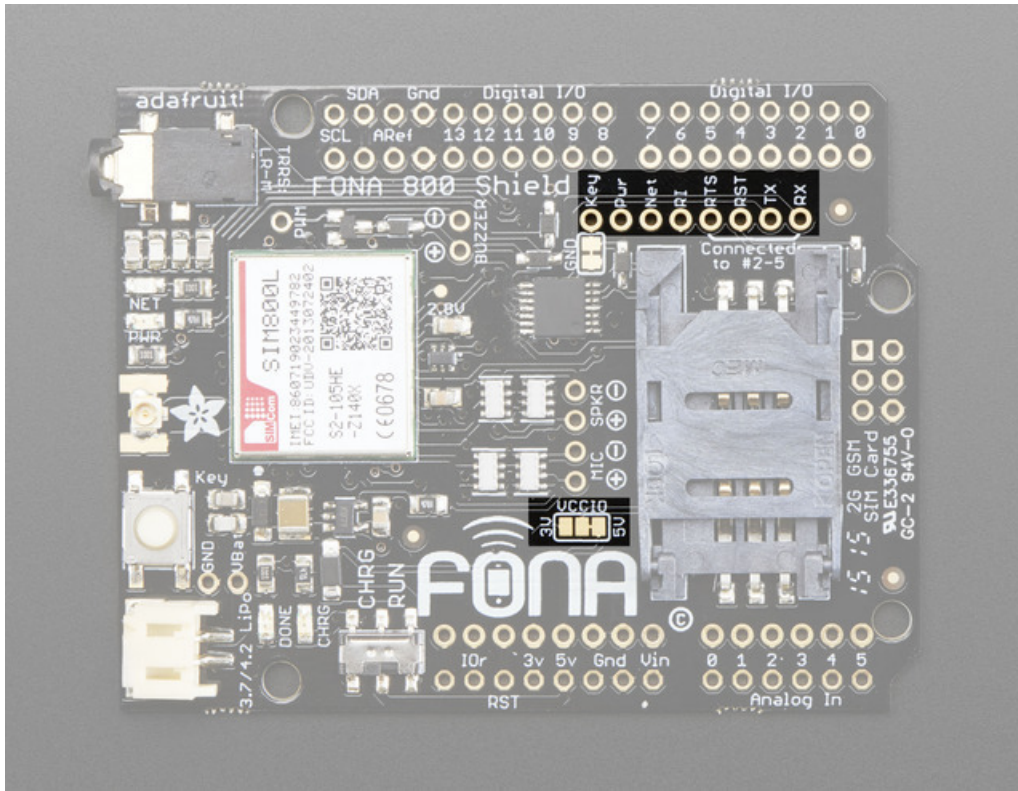
MicroSIMs won't fit - so make sure its a "Mini" SIM. **Mini SIMs are 1" x 0.6" / 25mm x 15mm.** These are by far the most common size.

Most cards come with a voice and/or data plan. If you want to make phone calls and SMS's you'll need a voice plan. If you want to transmit data like fetching a webpage, you'll need a data plan.



## LEDs

- **PWR** - Blue! Lit when the Cell module is booted and running
- **NET** - Red! You can use this for checking the current state without sending an AT command:  
**64ms on, 800ms off** - the module is running but hasn't made connection to the cellular network yet  
**64ms on, 3 seconds off** - the module has made contact with the cellular network and can send/receive voice and SMS  
**64ms on, 300ms off** - the GPRS data connection you requested is active  
 By watching the blinks you can get a visual feedback on whats going on.
- **Charging** - Orange! This is next to the JST jack. Indicates the onboard lipo charger is charging
- **Done** - Green! This is next to the JST jack. Indicates that the battery charging is done and the battery is full



## Shield I/O Breakouts

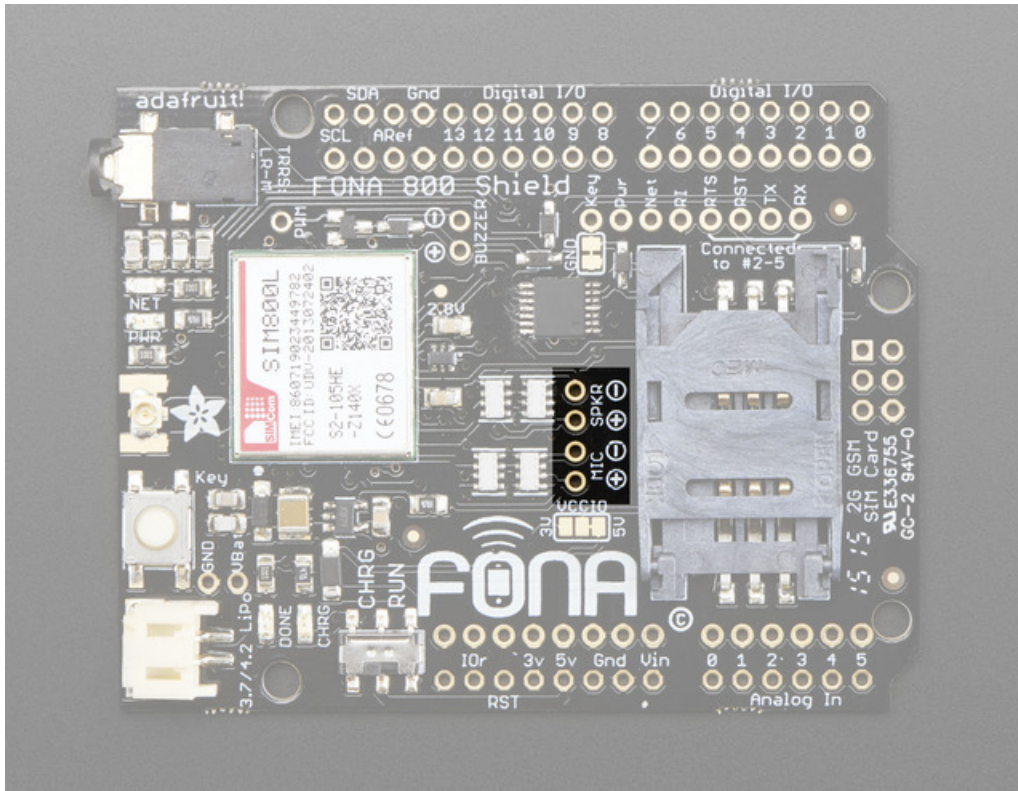
The most important pins are broken near the top left of the board. This is how the Arduino will communicate with the FONA shield!

These pins are all 3-5V input safe and if they are an output, the logic level is whatever VCCIO is set to (see the VCCIO jumper near the FONA logo, by default we use 5V logic, for 3.3V logic-only Arduinos, cut the trace and solder the middle pad over to 3V)

Starting from the **right**

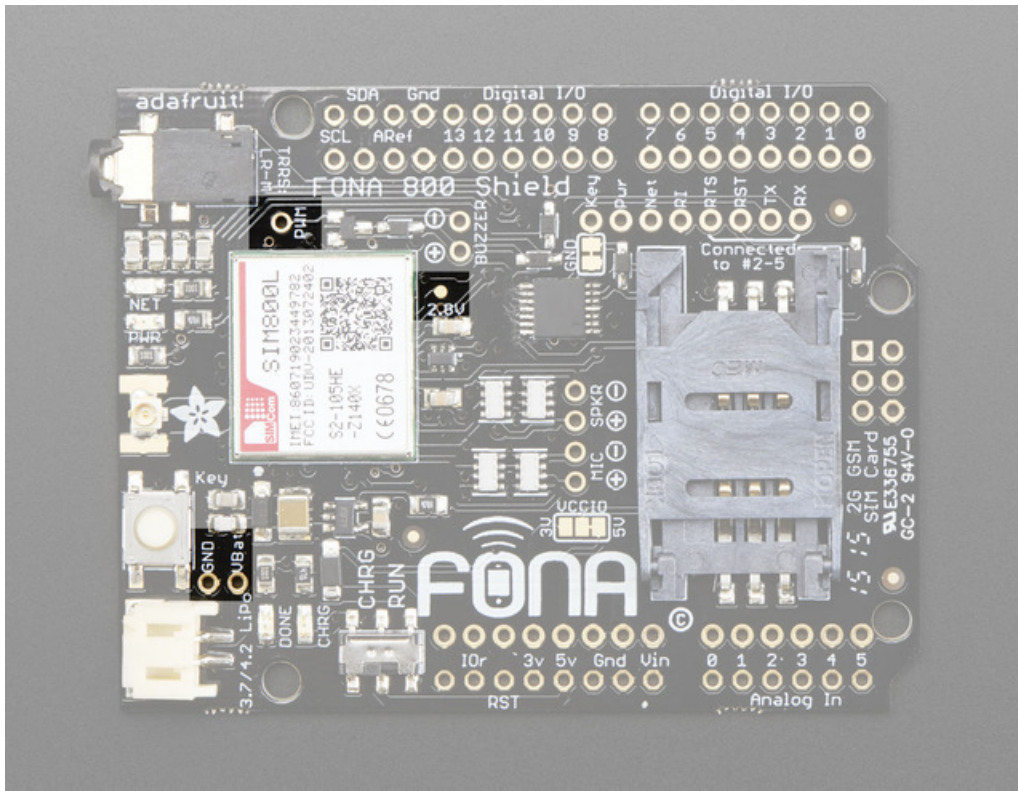
- **RX & TX** - The module uses UART to send and receive commands and data. These pins are auto-baud so whatever baud rate you send "AT" after reset or boot is the baud rate is used. RX is **into** the module connected by default to **Digital #2**, TX is **out of** the module, connected to **Digital #3**.
- **Reset (RST)**- this is module hard reset pin. By default it has a high pull-up (module not in reset). If you absolutely got the module in a bad space, toggle this pin low for 100ms to perform a hard reset. We tie this to **Digital #4**, and the library does a hard-reset so you always have a fresh setup.
- **RTS** (Ready To Send) - This is the module's flow control pin, you can use this to control how fast data is sent out from the module to the Arduino, good when you want to read only a few bytes at a time.
- **RI** - this is the Ring Indicator. It is basically the 'interrupt' out pin from the module. It is by default high and will pulse low for 120ms when a call is received. It can also be configured to pulse when an SMS is received. This is not connected to any pin by default, so solder a wire if you want to use it!
- **Net** - this is the Network status pin. It pulses to signal the current status of the module. This is also tied to the **Net** LED so for more detail see the LEDs section
- **Pwr** - this is the Power Status pin. It is low when the module is off and high when the module has power. If you're using the **Key** button or pin, you can monitor this pad to see when the module's booted up. This is tied to the **Pwr** LED too.
- **Key** - This is the power on/off control for the module. Its also tied to the button in the top left. When this pin is

tied to ground for 2 seconds, it turns the module on or off. It's not a level signal so it isn't like "low is off, high is on" - instead you must pulse it for 2 seconds to turn off/on. The module comes by default on (tied to GND) so the module will come up immediately. If by chance you want to control this pin, cut the GND-jumper right below this pad and use with any microcontroller output pin



## Audio Breakouts

- **SPK+ and -** : This is for connecting an external 8 ohm speaker, max 1W. You can configure the module to route calls and FM radio to the headset *or* the external audio. The two pins are differential so they don't have output DC blocking capacitors. **You cannot connect this to a stereo, powered speakers or other non-differential amplifier** without adding a 100uF+ blocking cap in series to the + pin and then not using the - pin. Instead, your amp should use GND for the - reference
- **MIC + and -** : this is for connecting an external electret microphone, it will bias the mic with 2V. Most electrets will work just fine. No extra circuitry is required for the mic such as a biaser or amplifier, just wire it up directly!



## Other Breakout Pins

We scattered a few other breakouts around the board.

- **Buzzer and PWM** - These are tied to the PWM output of the module! The PWM capability is quite nice, it can set any frequency and duty cycle. The **PWM** pin is directly output from the module and is 0-2.8Vpp. The **Buzzer** output has a NPN drive transistor so it can run a small vibration motor. Bz+ is the VBat voltage, Bz- is toggled on and off to ground.
- **VBat & GND** (near JST) - this is the ~3.7V Battery voltage from the JST connector.
- **2.8V test point** - We have a test point for the 2.8V internal regulator, its off to the right of the module

## Obtaining a SIM

---

In order to use the phone parts of FONA you will need a SIM card. Luckily, there's a phone store in every town in America! You can get a pre-paid or post-paid SIM but we kinda like the pre-paid kind.

A 2G Mini SIM card is **required** to use the module. Nearly any cell phone shop can sell you a SIM card. It must be a 2G GSM card. AT&T in the US does not sell these anymore! They are shutting down their GSM network, and only T-mobile sells and supports a GSM network. If you are in another country, chances are you can just ask for a GSM 2G card.

MicroSIMs won't fit - so make sure its a "Mini" SIM. Sometimes these are just called plain "SIM" cards since the huge-size SIMs are rarely used. **Mini SIMs are 1" x 0.6" / 25mm x 15mm**. these are by far the most common size.

The only thing to watch for is you need to have a 2G GSM-compatible SIM

In the US, AT&T no longer sells 2G SIMs! We suggest T-Mobile or T-Mobile "distributors"

If you have an *older* AT&T SIM it *may* work. AT&T announced in 2012 that they would shut down their 2G network January 1, 2017. The vast majority of M2M (machine-to-machine) cellular devices use GSM, so the 5 year lead time was to give people plenty of time to migrate from AT&T.

You can read an interesting whitepaper from Aeris about this below:

<https://adafru.it/dEh>

<https://adafru.it/dEh>

## T-Mobile & TING

---

T-Mobile does not have any announcement that they will sunset GSM. We can't speak for them but we expect at least 5 years warning as well, probably they will never fully sunset since there's millions of machines with GSM connectivity.





Adafruit now sells the TING SIM card, a 2G GSM SIM that works great with all FONAs, and has a great billing system as well, where you only pay what you use!

If you don't want to use TING, there are dozens of T-Mobile resellers such as Walmart, SIMPEMOBILE, etc! Just ask the seller if its AT&T or T-Mobile network. If they get cagey just say your apartment has no AT&T coverage.

You do not need to bring in or show your FONAs to the Cell Phone store. Just tell them you need a Mini SIM for a GSM phone and it's at home.

## Some suggestions from FONAs users!

- I've had good luck using the FONAs with a SIM from Walmart. [Their 'Walmart Family Mobile' is a T-mobile reseller and you can pick up the SIM starter in store pretty easily](https://adafru.it/dEi) (<https://adafru.it/dEi>). The service isn't the cheapest, it's \$25 for the SIM and \$30/month for unlimited talk+text or \$40/month for unlimited talk+text+data but there's no contract as its all prepaid **-tdicola**
- Just want to let the Adafruit team know that it is possible to get pre-paid minutes on T-Mobile and its a pretty good deal. [I was paying \\$100 for 1000 minutes \(10c a minute 20 a sms\) over the course of the year.](https://adafru.it/dEj) (<https://adafru.it/dEj>) For me it in my usage came out to about \$8 a month. Have found this is something that you have to ask for at the store. No evidence in advertising or website **-Paul B.**
- [Telna has a good deal you may want to point people to for FONAs. I used them for a previous GSM project and they worked great. \\$20 per year, includes 1000 free txt messages and a bunch of other nice features.](https://adafru.it/dEk) (<https://adafru.it/dEk>) I had a lot more issues with T-Mobile (Their cards go inactive if not used in a month and you have to call to reactivate) **-Tyler C.**
- I pay 2 EUR (a bit less than \$3 USD) for 2 hours, unlimited SMS and 50Mb of Data at <http://mobile.free.fr/> (<https://adafru.it/dEr>) **-KTOWN**
- There are specialty "machine 2 machine" SIM sellers that have plans that are tuned for the short bursts of usage used by these kinds of modules. Check out [these guys](https://adafru.it/vQA) (<https://adafru.it/vQA>) for example, you can choose data,

voice/sms or a combination for a pretty low price!

- Hi, just a update to let you know I have just begun to use the Fona, SIM from ROGERS, which is 2G, 3G, and 4G. I pulled my sim out of my phone, and it works well. So if you have Canadians that want to use that product, let them know it works on the west coast ! You can go to Rogers website and see the coverage map and services. -  
**Steve C**

**We haven't tried all of these SIMs so you may need to try it out. For other countries, GSM is very common so you should be able to buy a SIM from any cell phone store.**

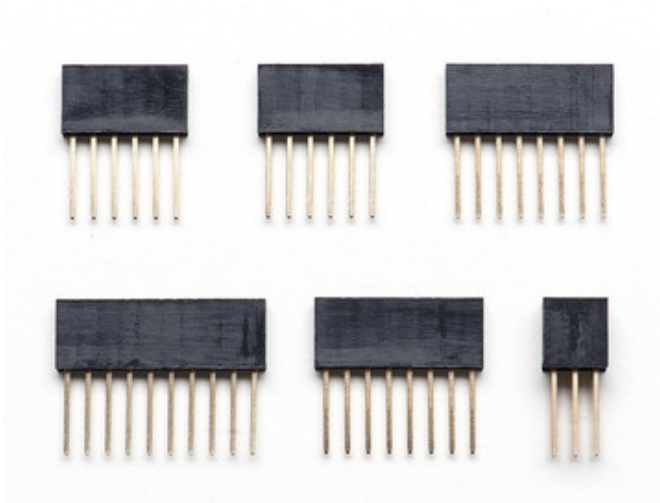
## Assembly

### Stack Alert!

---

If you want to stack a shield on top of the FONA Shield, you'll want to pick up some stacking headers and use those instead of the plain header shown here!

---



Wanna stack? This tutorial shows how to use the plain header to connect to an Arduino. [If you want to use stacking headers \(https://adafruit.com/blog/2014/05/21/stacking-headers/\)](https://adafruit.com/blog/2014/05/21/stacking-headers/), don't follow these steps!

---

## Attaching Header

---

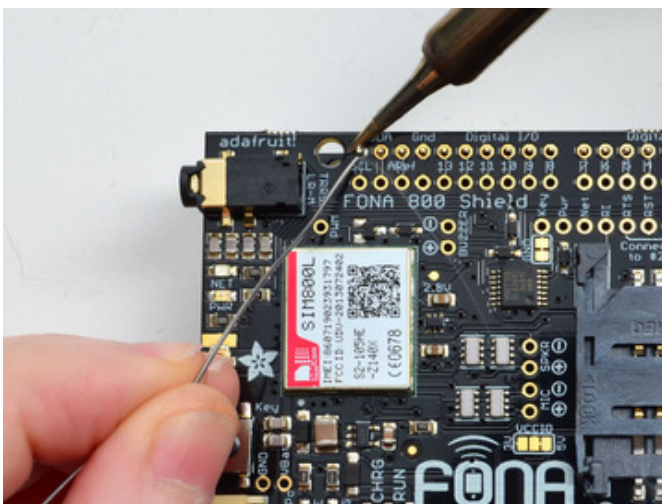


Begin by breaking the 36-pin male header into four pieces: one 10-pin, two 8-pin and one 6-pin. Stick the header into the Arduino sockets with the long pins down.

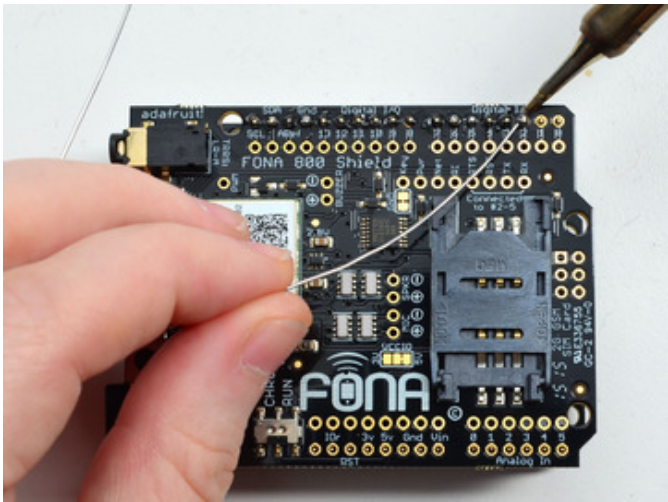
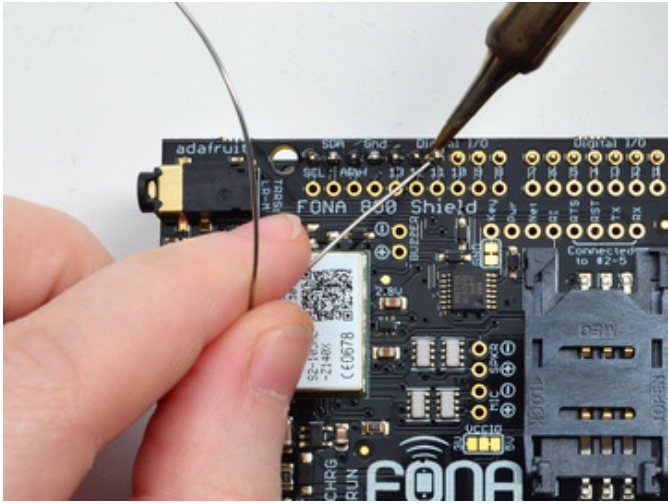
---

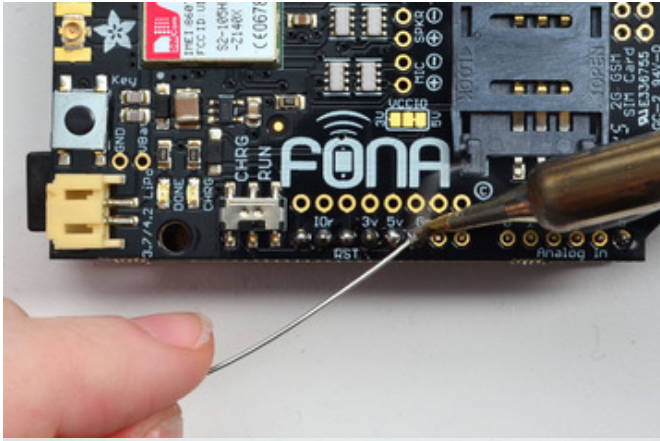


Place the shield on top so that all the little pins stick out through the matching holes in the shield. It should match up perfectly!



Solder in all the header



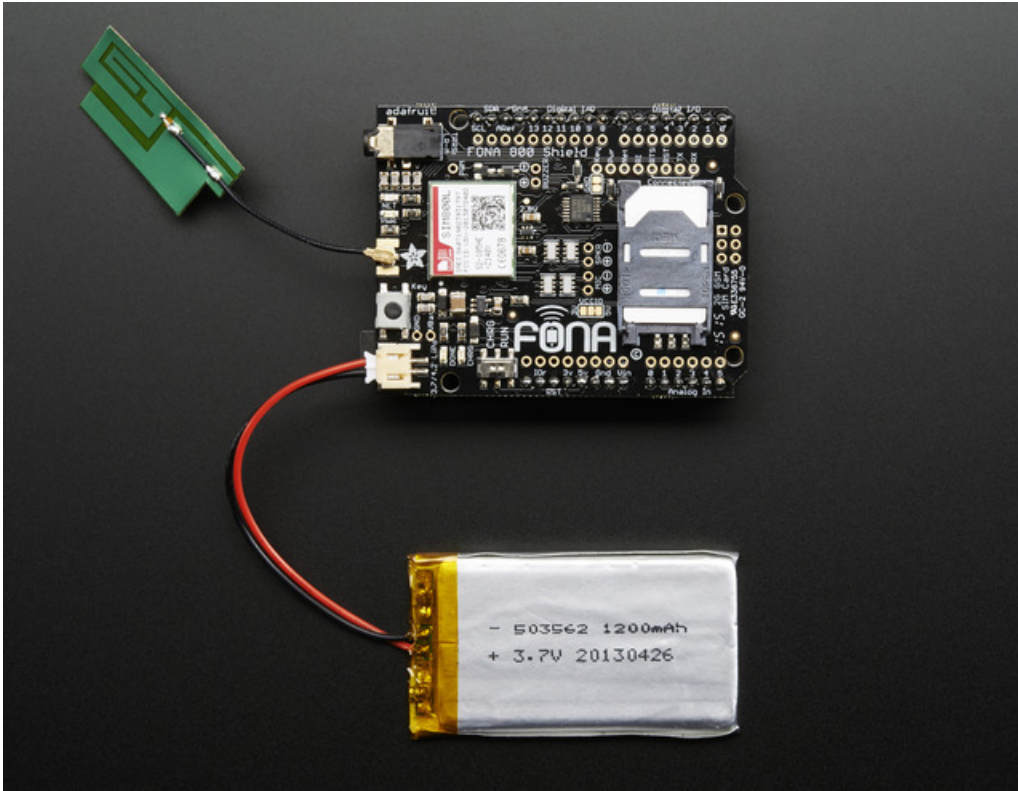


Check your work once done! Now you can move onto the next steps



## Attaching Antenna & Battery

A battery and antenna is required!

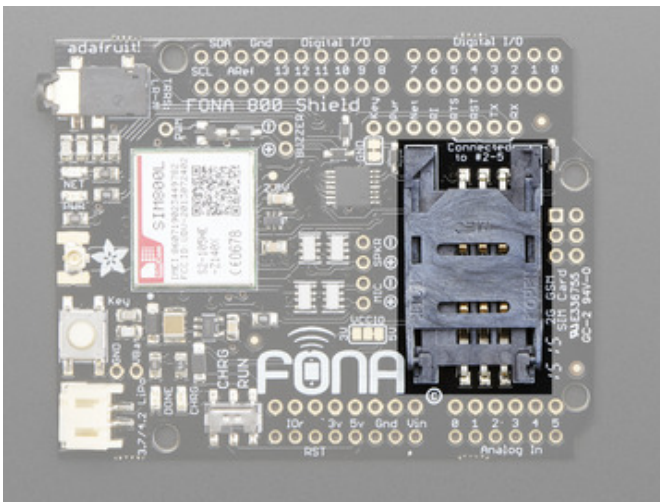


Check polarity for the battery!

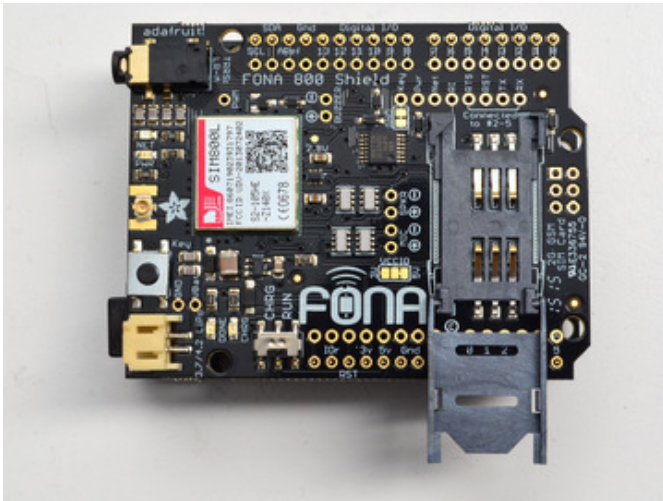
Snap the uFL connector on, it will click when placed properly

## SIM Card

You **must** insert a SIM card to do anything but the most basic tests. FM radio does work without a SIM but of course you cannot send or receive texts, calls, etc!



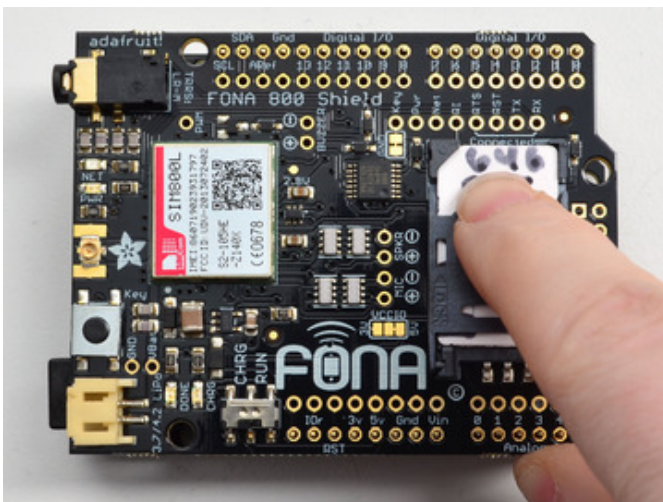
The SIM card holder is on the right side of the shield. It holds a very-standard "Mini SIM". Micro SIMs will not work! Make sure you get a "Mini SIM"



Open by sliding the cover towards the bottom of the shield

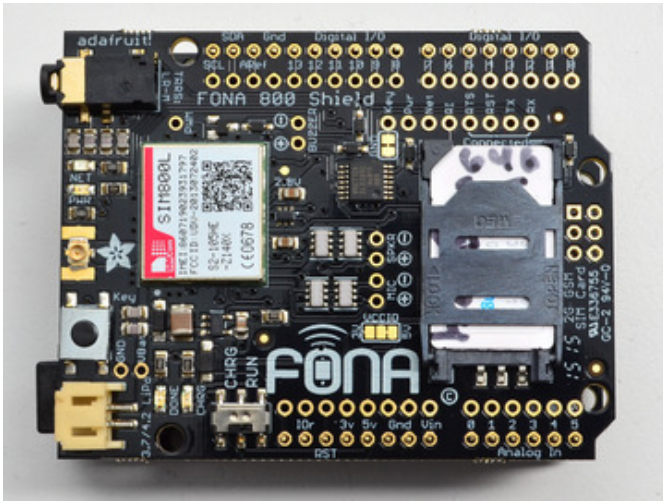


Insert the SIM with the gold pads facing up and the notch on the outer corner



Close the hinge down and slide the cover to lock it in place





The SIM should be secure and flat in the holder

## Arduino Test

The FONA library is under heavy development! This page may change over time!

### Download Adafruit\_FONA

To begin reading sensor data, you will need to [download Adafruit\\_FONA Library from our github repository \(https://adafru.it/dDC\)](https://adafru.it/dDC). You can do that by visiting the github repo and manually downloading or, easier, just click this button to download the zip

<https://adafru.it/dDD>

<https://adafru.it/dDD>

Rename the uncompressed folder **Adafruit\_FONA** and check that the **Adafruit\_FONA** folder contains **Adafruit\_FONA.cpp** and **Adafruit\_FONA.h**

Place the **Adafruit\_FONA** library folder your **arduinofolder/libraries/** folder. You may need to create the **libraries** subfolder if its your first library. Restart the IDE.

We also have a great tutorial on Arduino library installation at: [http://learn.adafruit.com/adafruit-all-about-arduino-libraries-install-use \(https://adafru.it/aYM\)](https://adafru.it/aYM)

### FONA 3G Baud Adjustment

If you have a FONA 3G, the first time you use it you may need to run the **FONA3G\_setBaud** example to set the baud rate manually to 4800bps rather than 115200

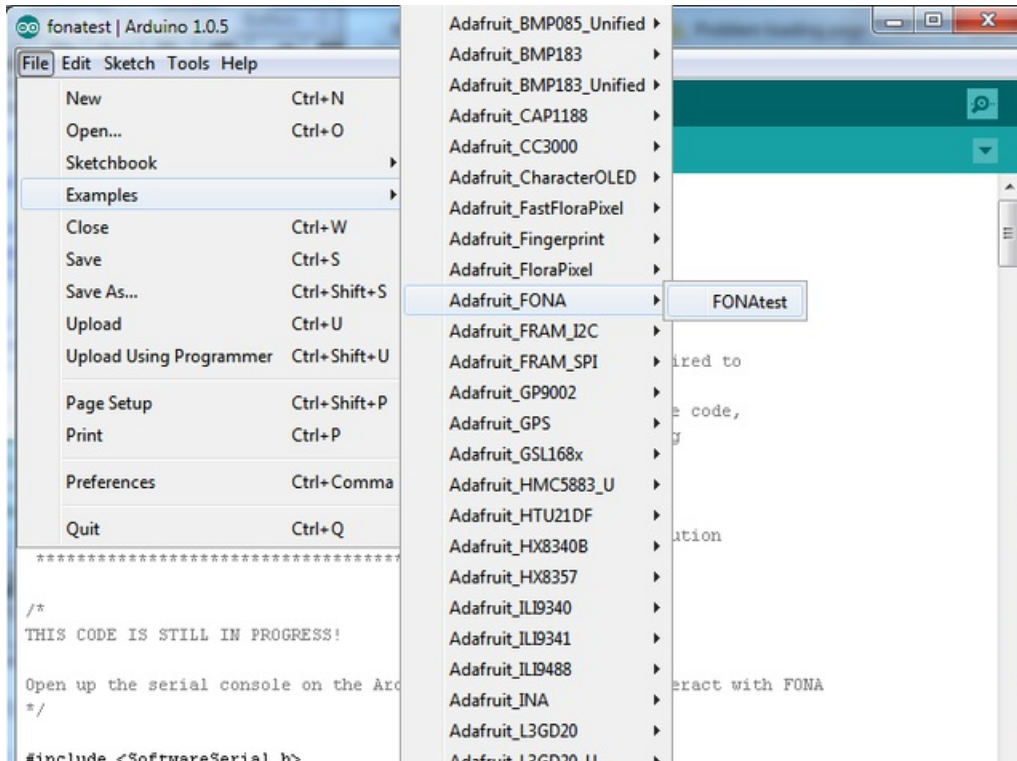
### Load Demo

Open up **File->Examples->Adafruit\_FONA->FONAtest** and upload to your Arduino wired up to the module.

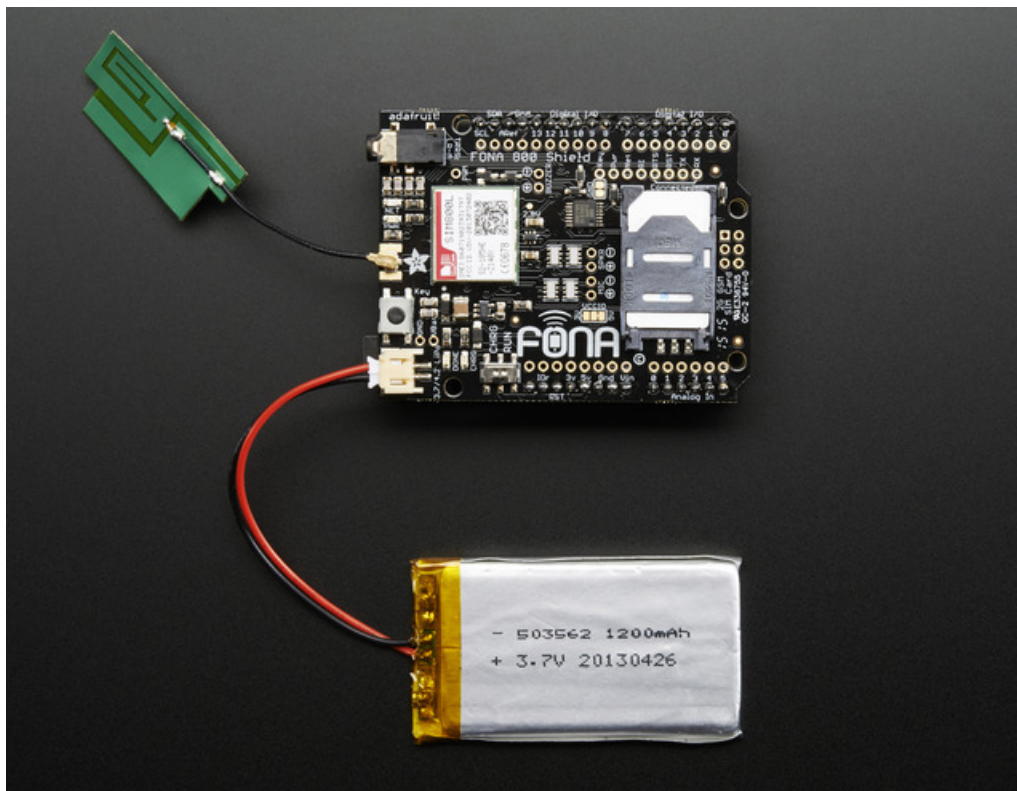
For the FONA 3G, change the constructor used in FONATest to **Adafruit\_FONA\_3G**:

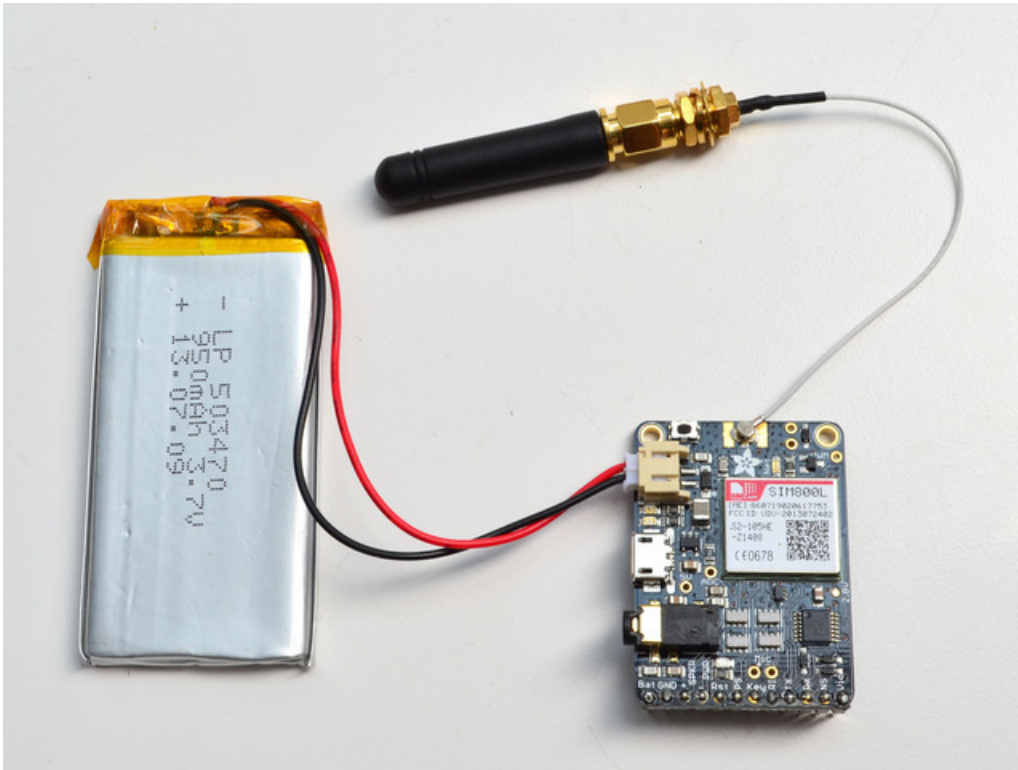
```
// Use this for FONA 800 and 808s
//Adafruit_FONA fona = Adafruit_FONA(FONA_RST);
// Use this one for FONA 3G
Adafruit_FONA_3G fona = Adafruit_FONA_3G(FONA_RST);
```

For Mega, Leonardo, or Micro, change the definition of **FONA\_TX** to the pin you used!

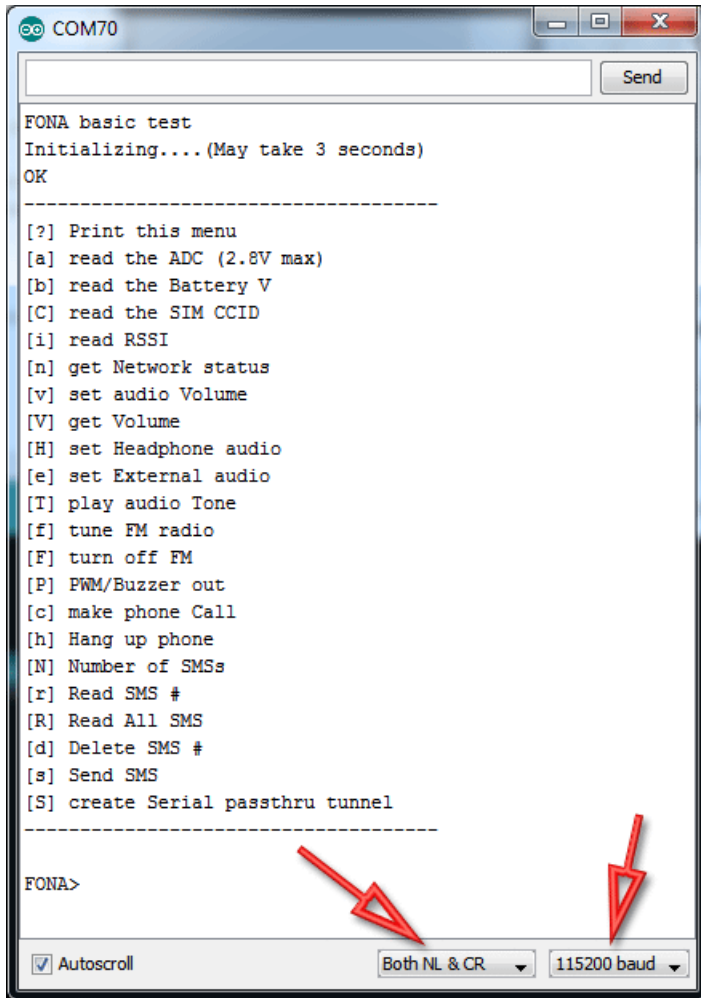


Make sure you have a charged 3.7/4.2V LiPoly or Lilon battery plugged into the JST and an antenna attached





Once uploaded to your Arduino, open up the serial console at **115200 baud speed** to begin the tester sketch



Make sure you also have **Both NL & CR** for the serial command sender option. This means when you send data to the Arduino via the console, it will put a newline/return at the end.

## Using the Test Sketch

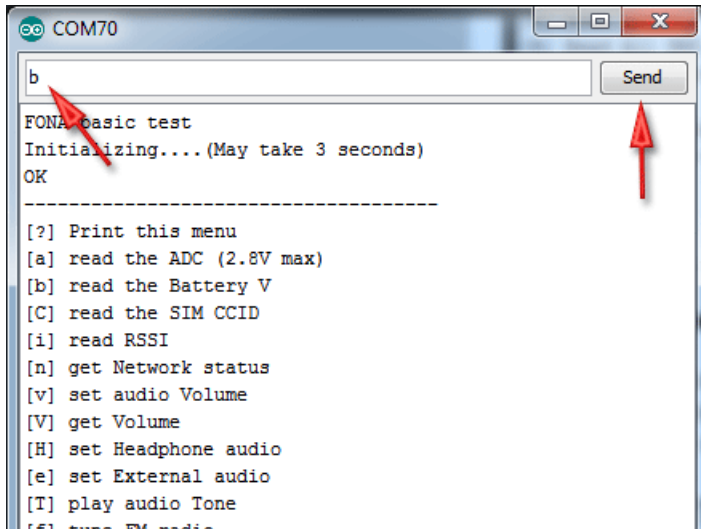
The test sketch has a menu interface so you can test out just about everything the FONA can do. The menu may change slightly as we add more functionality and update code!

Continue onto the next few sections to see what functionality you can test with the sketch

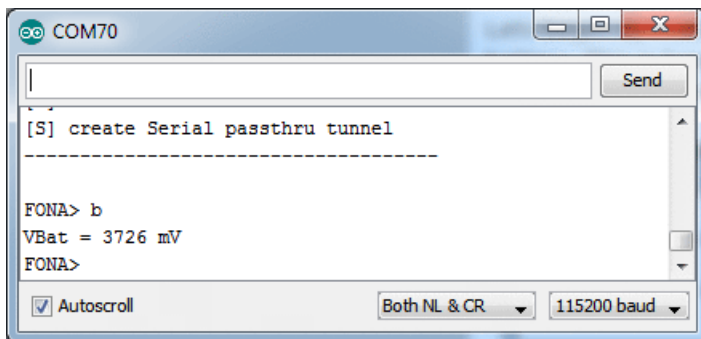
## Hardware Test

### Battery voltage

Lets begin by reading the battery voltage. That's the lipoly battery. This is handy if you need to track when the battery is low! type **b** into the command window and hit **Send**

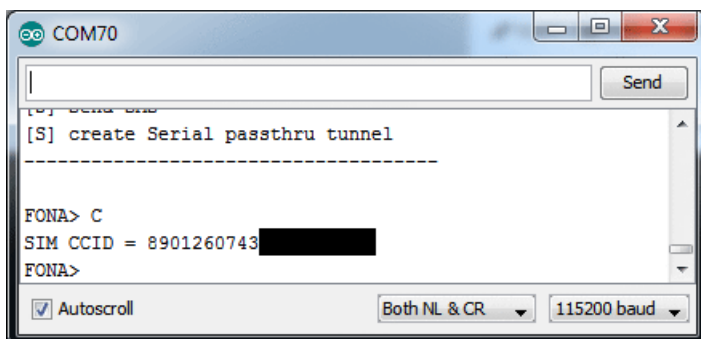


You'll see a print-out of the battery voltage in mV, so in this case its 3.726V



### Check SIM CCID

You can verify that the SIM is inserted and correct by reading the CCID, which is the unique identifier printed on it with C

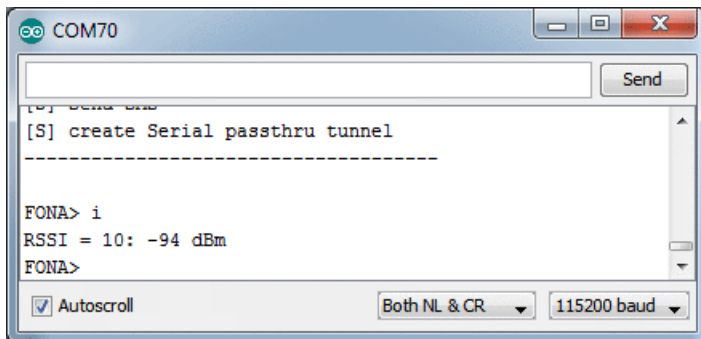




## Network Test

### Check RSSI (network signal strength)

You can ask the FONA for the signal strength with the command `i`. The reply is a number, but you can convert it to dBm. Try to have the signal strength higher than 5 in order to make calls, SMSs, etc. In this case, I've got a 10



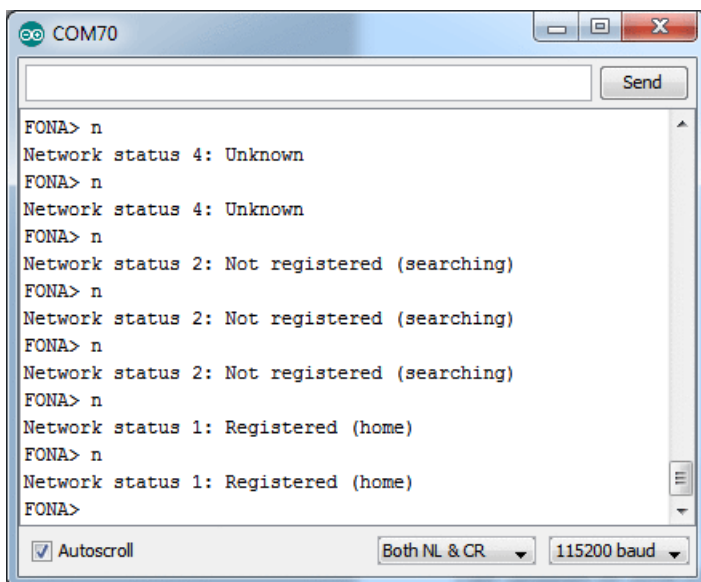
```
COM70
[ ] Send
[S] create Serial passthru tunnel
-----
FONA> i
RSSI = 10: -94 dBm
FONA>
```

### Checking Network Registration

If the FONA has good signal it will immediately try to locate a cell tower and register to it.

You can check the status of the network with `n`

Once it's Home Registered, give it like 5-10 more seconds before trying to access/send SMS's or phone calls.



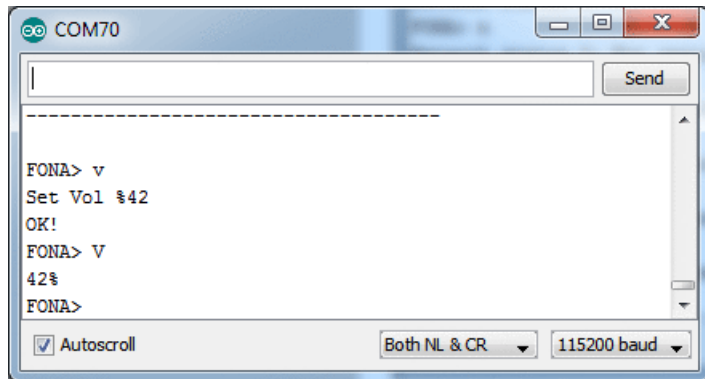
```
COM70
FONA> n
Network status 4: Unknown
FONA> n
Network status 4: Unknown
FONA> n
Network status 2: Not registered (searching)
FONA> n
Network status 2: Not registered (searching)
FONA> n
Network status 2: Not registered (searching)
FONA> n
Network status 1: Registered (home)
FONA> n
Network status 1: Registered (home)
FONA>
```



## Audio Settings & Test

### Set and Get audio volume

You can set the audio volume with `v` and retrieve it with `V` - its in % so ranges from 0 to 100



```
COM70
-----
FONA> v
Set Vol %42
OK!
FONA> V
42%
FONA>
```

The screenshot shows a serial terminal window titled 'COM70'. The terminal displays the following text: 'FONA> v', 'Set Vol %42', 'OK!', 'FONA> V', '42%', and 'FONA>'. At the bottom of the window, there are three controls: a checked 'Autoscroll' checkbox, a dropdown menu set to 'Both NL & CR', and another dropdown menu set to '115200 baud'.

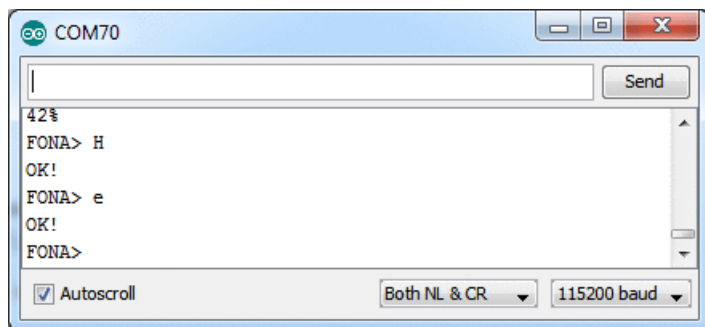
### Setting Headset or External audio

There are two audio paths on the FONA. One is the headset, thru the 3.5mm audio jack. The other is "external" - using the two speaker and mic pins for wiring up external speaker and mic. FM audio, phone calls, tones, etc can be routed to one or the other.

To set the audio to headset, use the command `H`

To set the audio to external, use the command `e`

Note the FONA 808 only has Headset audio, so setting External audio wont do anything. The Feather FONA does not have headphone brought out, so use external only!



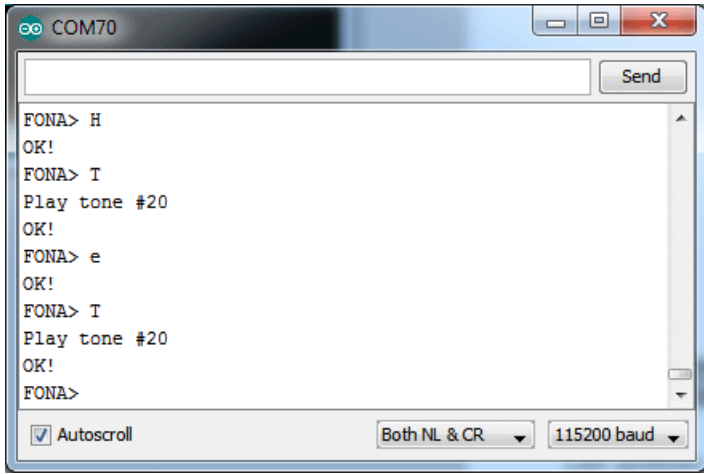
```
COM70
-----
42%
FONA> H
OK!
FONA> e
OK!
FONA>
```

The screenshot shows a serial terminal window titled 'COM70'. The terminal displays the following text: '42%', 'FONA> H', 'OK!', 'FONA> e', 'OK!', and 'FONA>'. At the bottom of the window, there are three controls: a checked 'Autoscroll' checkbox, a dropdown menu set to 'Both NL & CR', and another dropdown menu set to '115200 baud'.

### Playing Toolkit Tones

You can test the audio path with the toolkit tones. These are tones that mimic what some phone services sound like. For a full list of tones, you can check the `AT+STTONE` command in the AT command datasheet. We'll use tone #20 which is the American dial tone.

You can switch to headset mode, play a tone, then try it on the external audio mode. This is a very easy way to try out both speakers for debugging

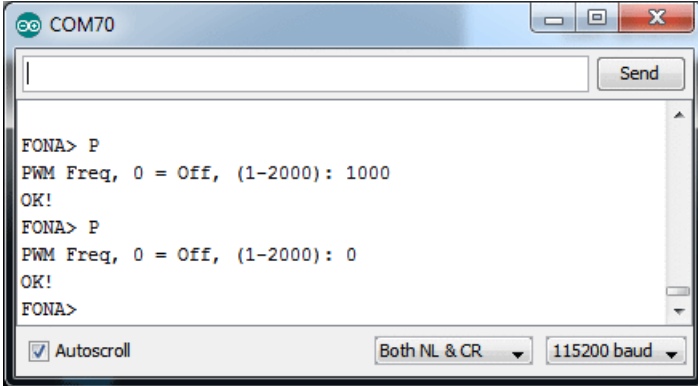


## PWM Buzzer

PWM Buzzer is available on the FONA800 and 808 Breakouts and Shields

### PWM/Buzzer

There is a single PWM output pin that you can use to control a Piezo or a vibrating motor. The datasheet is a little unclear on how to use it in 'PWM' mode where you have full frequency and duty cycle control. In the mode we're using it, you can set the frequency from 1-2000 Hz and it will have 50% duty cycle. The **PWM** pin is the straight-from-the-module output, 2.8Vpp. The **Buzzer** pins have a PNP driver, so you can use it with a motor buzzer and power from the lipoly battery.



```
COM70
FONA> P
PWM Freq, 0 = Off, (1-2000): 1000
OK!
FONA> P
PWM Freq, 0 = Off, (1-2000): 0
OK!
FONA>
```

Autoscroll    Both NL & CR    115200 baud

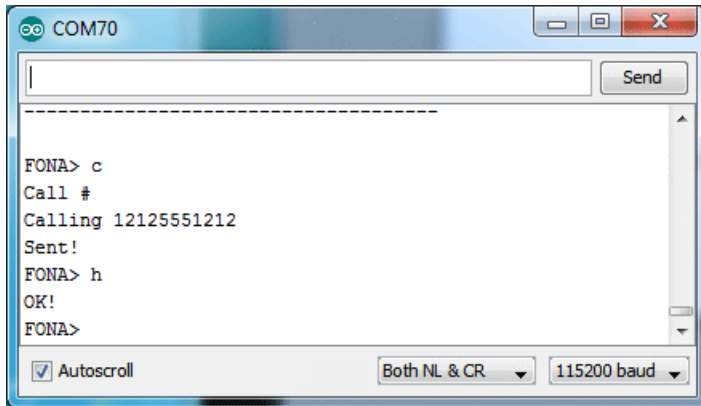
## Phone Calls

### Make Phone Calls

---

OK now we're onto the good stuff. You can make a phone call with FONA pretty easily. Make sure you have the right audio interface selected (external or headset!) before you go forward

Make a call with **c** - the call happens in the 'background'. When you're done then you can hang up with **h**

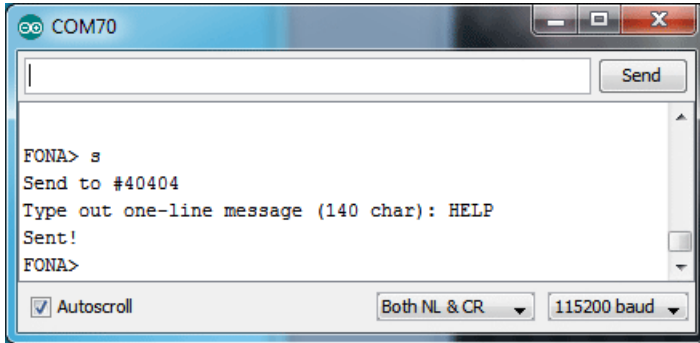


# SMS

## Send and Read SMS

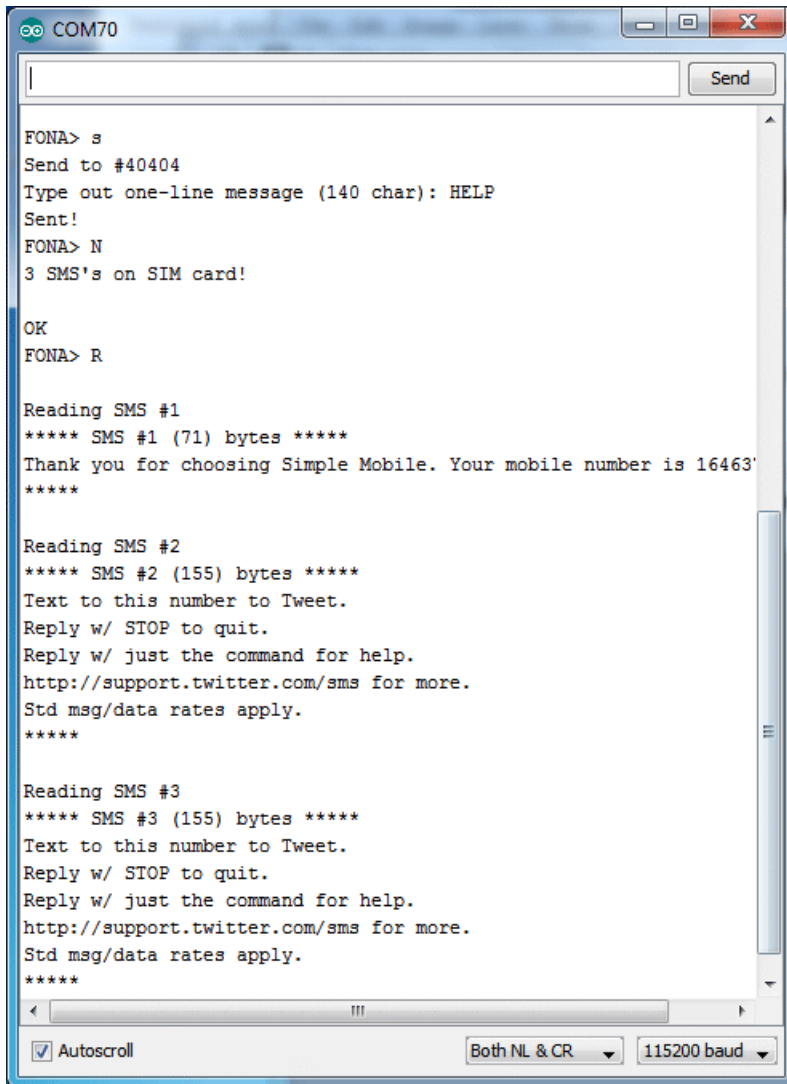
Another easy thing you can do is send and receive SMS messages. Lets start by sending an SMS. We'll use twitter's 40404 short code, which will auto respond, making it easy to verify both sending and receiving

You *can* send multi-line SMS's using the library API but for this example, its easier to parse the data if its a single line!

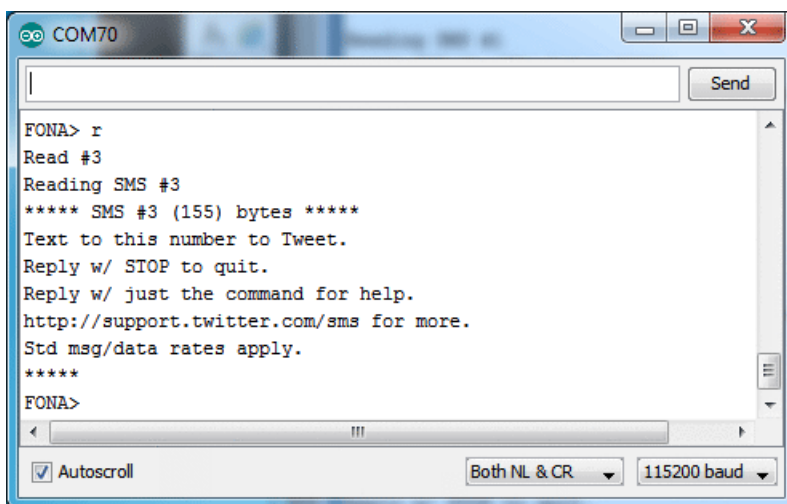


You can then ask the SIM how many SMS's it has with **N** and read all of them with **R**

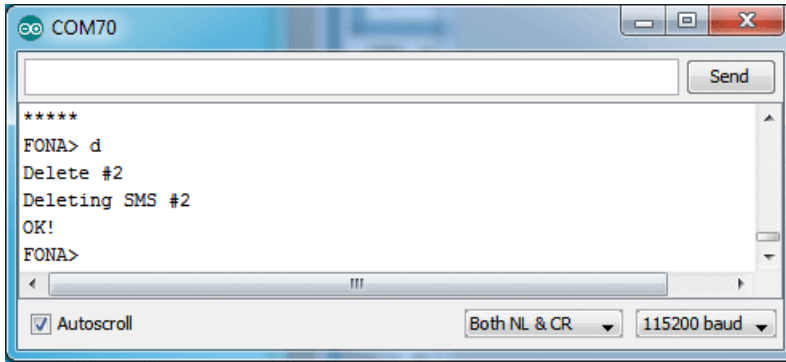
Note that SMS's are referred to by slots but the number does not include empty slots. We'll show this in detail in a bit



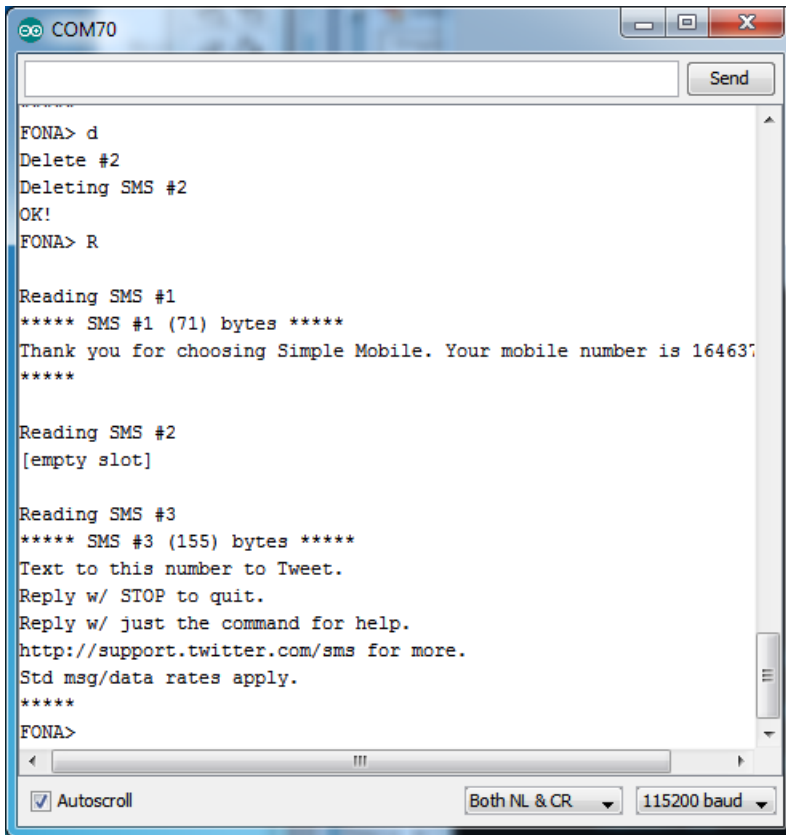
You can read individual SMS's with r



And delete SMS's by slot # with d



Note that before I deleted SMS #2, so if I read them again, that SMS # will be an empty slot. SMS number #3 doesn't "move slots"!



## FM Radio (FONA800)

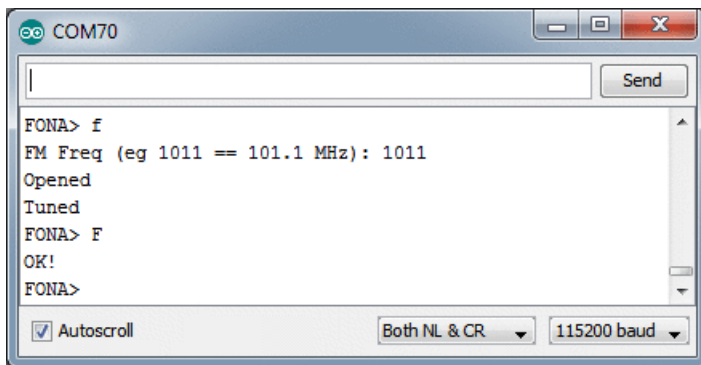
FM radio tuning/listening is only for FONA 800, the FONA 808 and FONA 3G does not contain a tuner

### FM Radio (FONA 800 only)

The FONA has an FM receive in it. It uses the headset as the 'antenna' but it works pretty well considering! The FM radio goes thru whatever audio path you have set up

You can open and tune to an FM frequency in units of 100KHz. So if you want to tune to 88.1MHz, type in 881. For 102.3, type in 1023.

Use the **f** command to open and tune, and **F** to close it



```
COM70
|
| Send
FONA> f
FM Freq (eg 1011 == 101.1 MHz): 1011
Opened
Tuned
FONA> F
OK!
FONA>
 Autoscroll
Both NL & CR
115200 baud
```



## Handy Commands

---

Here's a quick list of useful commands that may not be directly supported by the library but are handy for many projects!

### RI on SMS receipt

```
AT+CFGRI=1
```

The RI pin will pulse low for ~100ms when an SMS is received

### Factory Reset

```
ATZ
```

will reset the FONA GSM module to its factory default

## Bluetooth commands

---

[Here's a thread if you're interested in the BT support in the SIM800H\(https://adafru.it/rva\)](https://adafru.it/rva) (there's no antenna for BT in the SIM800 breakout but it is in the FONA feather)

## F.A.Q.s

---

### Is a Lipo Battery required? Can I run the FONA off of a power supply or just the microUSB port?

The microUSB (on the shield, in CHARGE mode and powered via USB or DC power) is only used to charge the battery. Without a battery installed it will flicker on and off so it cannot be used to power a FONA minus battery.

A 1200mAh+ sized Lithium ion/polymer battery is required, nothing else will be able to easily power the FONA and provide the correct voltage range even during 2 Amp spikes.

### I really want to run my FONA without a Lipoly battery!

You can't.

We keep getting people who ask "Hey I know its a requirement but I want to build a buck/boost/linear 3.8V regulator and it will be OK because I said so" and then they realize it doesn't work well

The FONA design depends on a Lipoly battery. **The battery is not optional. The battery is essential to function. If you do not want a Lipoly battery you will have to use a different cellular module design. All of our FONAs require, depend and will not work without a Lipoly battery**

You can keep the battery topped up with an external 5V power supply for long term usage but **the battery is still required even if plugged into USB**

### Ahh! My FONA was working fine then I sent it some command and its not working right anymore?

You can always factory reset the FONA by sending it the

**ATZ**

command. Say with `fona.println("ATZ")` or using a USB console cable to send commands. If you set an odd fixed baud rate (e.g. you cannot even get an **OK** when you send **AT**), a USB serial console cable will be helpful it quickly changing baud rates in your terminal software to get back to a working AT/OK setup!

### I'm using FONA as a voice caller and the other person can't hear me!

Note that you do have to use a compatible headset. Not all CTIA headsets will work, [the ones we have in the shop are known to work](#) and so do many other Android but iPhone headsets do not.

You can also use 'external' audio on the FONA (electret mic and speaker soldered to FONA) but **you cannot mix and match**. Either you use headset or you use external audio. You cant use external mic and headset speaker.

[You also have to tell the FONA which audio you are using, it does not autodetect. You can use our library and `fona.setAudio\(\)`](#)

### My FONA doesn't work with Arduino Due/ADK/101/Galileo/STM32....

Right now we only know that the FONA library and shields work with Arduino UNO. Any other platforms may require porting work

### Can I charge the battery and use FONA at the same time?

Yes! You can use the Lipoly as sort of a 'backup battery' - keep charging it via MicroUSB (on the shield, in CHARGE mode and powered via USB or DC power) during use. If the MicroUSB loses power, the FONA will keep going.

### **My FONA won't turn on/respond! Or it acts flakey and auto-shuts off sometimes!**

We've noticed a lot of problems that are 'weird' that are a results of using batteries with the wrong polarity.

All batteries from adafruit have the right wire colors/polarity for the FONA

**Batteries not from Adafruit are not guaranteed to have the right pinout! Using the wrong pinout may damage the FONA and/or make it act 'odd'!**

### **FONA 800/808 requires a 2G SIM, does it work with a dual 2G-3G SIM?**

That will work fine, as long as the SIM can register to the 2G network at all, it is acceptable to use

### **Are you sure I can't use ATT for 2G service? I'm in a T-Mobile cold spot**

The AT&T GSM network is going to be live until January 2017. If you're reading this and it's 2017, you're outta luck. If not, you can try to get an AT&T SIM activated to the 2G GSM network but its not going to do that by default. You'll have to call up or talk to an AT&T rep and it may not go so well because they really don't want people to use their GSM network.

[You can also call up T-Mobile and say you can't get connected consistently - they may send you a free signal booster](#)

[Check out this handy map to see T-Mobile's coverage map in the USA](#)

### **How long can FONA last on my battery?**

We haven't done extensive testing with FONA but from preliminary reports, the FONA draws about 20-25mA while running, up to 200mA+ while actually making a call/sending/receiving data, and has very small spikes of up to 2A. The spikes are short and are absorbed by the onboard capacitors.

A 1200mAh battery can run the FONA on 'standby' for a day or two.

### **How do I set the Real Time Clock on the FONA SIM?**

Please see [this forum post!](#)

### **I'm using a FONA 808 and the GPS commands aren't working**

The FONA 808 has two versions, due to a revision of the module itself. Version 1 has two barcodes on the front and is part #S2-10606-Z1F01. Version 2 has a QR code on the front and is part #S2-10606-Z1F02. V2 has a newer/better chipset (MT3337 instead of MT3336) but the commandset has changed. Which is annoying but adaptable!

If you are using V1, [use this GPS command document for how to interact with the GPS subsystem](#)

If you are using V2, [use this GNSS command document instead.](#)

### **How do I switch between SMS storage on SIM and in internal FLASH?**

You can switch between the storage locations by changing the FONA\_PREF\_SMS\_STORAGE definition in the Adafruit\_FONA.h library file. The definition "SM" selects the SIM, and the definition "ME" selects FLASH.

```
// Set the preferred SMS storage.  
// Use "SM" for storage on the SIM.  
// Use "ME" for internal storage on the FONA chip  
#define FONA_PREF_SMS_STORAGE "\"SM\  
//#define FONA_PREF_SMS_STORAGE "\"ME\  
"
```

Then recompile and upload

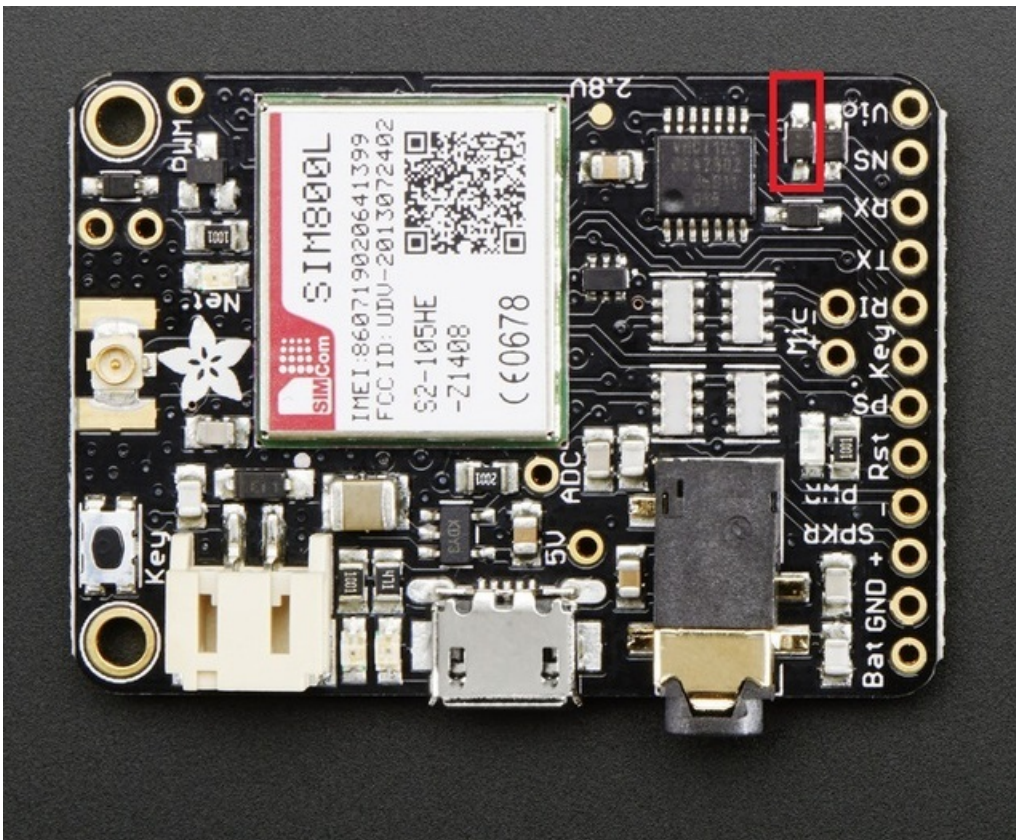
I'm trying to reset the FONA with my microcontroller/computer and pulling the RESET pin low via a GPIO isn't working?

There's a superfluous level shifting diode that we put on the FONA and FONA 808 breakouts - it turns out it isn't necessary and for microcontrollers with weaker outputs it can keep the FONA from resetting.

You can 'bridge' this diode with a piece of wire, its perfectly safe and may give you a little more headroom. There's already level shifting inside the modules so there's no risk to this mod.

Simply solder a small wire between the two pads, or remove the diode and replace with a 0 ohm resistor or wire.

See more here: <http://forums.adafruit.com/viewtopic.php?f=54&t=77778#p410867>





## Downloads

### Datasheets & App notes

---

- [SIM800 Command Manual \(https://adafru.it/vTb\)](https://adafru.it/vTb) - All the basic commands that the module supports (please note some are not supported by the 800L, such as text to speech or bluetooth)
- [SIM800 Hardware Design \(https://adafru.it/kDW\)](https://adafru.it/kDW) - The 'H' differs from the 'L' in supporting bluetooth and fax. Otherwise its the same, this is basically the 'datasheet'
- [SIM800 Sleep App Note \(https://adafru.it/vTc\)](https://adafru.it/vTc)
- [SIM800 Embedded AT App Note \(https://adafru.it/vTd\)](https://adafru.it/vTd)
- [SIM800 Compiling Environments \(https://adafru.it/vTe\)](https://adafru.it/vTe)
- [SIM800 Bluetooth App Note \(https://adafru.it/vTf\)](https://adafru.it/vTf)
- [SIM800 FM App Note \(https://adafru.it/vTA\)](https://adafru.it/vTA)
- [SIM800 FS App Note \(https://adafru.it/vTB\)](https://adafru.it/vTB)
- [SIM800 GNSS Location App Note \(https://adafru.it/vTC\)](https://adafru.it/vTC)
- [SIM800 GSM Location App Note \(https://adafru.it/vTD\)](https://adafru.it/vTD)
- [SIM800 IP App Note \(https://adafru.it/vTE\)](https://adafru.it/vTE)
- [SIM800 MMS App Note \(https://adafru.it/vTF\)](https://adafru.it/vTF)
- [SIM800 Multiplexer App Note \(https://adafru.it/vUa\)](https://adafru.it/vUa)
- [SIM800 NTP App Note \(https://adafru.it/vUb\)](https://adafru.it/vUb)
- [SIM800 PCM App Note \(https://adafru.it/vUc\)](https://adafru.it/vUc)
- [SIM800 Software Upgrade App Note \(https://adafru.it/vUd\)](https://adafru.it/vUd)
- [SIM800 SSL App Note \(https://adafru.it/vUe\)](https://adafru.it/vUe)
- [SIM800 STK App Note \(https://adafru.it/vUf\)](https://adafru.it/vUf)
- [SIM800 TCPIP App Note \(https://adafru.it/vUA\)](https://adafru.it/vUA)
- [SIM800HL Schematic and PCB Reference Design \(https://adafru.it/vUB\)](https://adafru.it/vUB)
- [SIM800H GCF I13GC9551\\_RSE-E Report \(https://adafru.it/vUC\)](https://adafru.it/vUC)
- [SIM800H CE Certificate \(https://adafru.it/vUD\)](https://adafru.it/vUD)
- [SIM800H CTTL + GCF Test Report \(https://adafru.it/vUE\)](https://adafru.it/vUE)
- [I14Z46950-GPM01 Test Report \(https://adafru.it/kEi\)](https://adafru.it/kEi)
- [SIM800H PTCRB Test Report \(https://adafru.it/vUF\)](https://adafru.it/vUF)
- [SIM800H RoHS Test Report \(https://adafru.it/vVa\)](https://adafru.it/vVa)
- [SIM800H REACH Test Report \(https://adafru.it/vVb\)](https://adafru.it/vVb)
- [SIM800H GCF I13GC9551 Test Report \(https://adafru.it/vVc\)](https://adafru.it/vVc)
- [SIM800H FCC PCB Grant Final \(https://adafru.it/vVd\)](https://adafru.it/vVd)
- [SIM800H FCC DSS Grant Final \(https://adafru.it/vVe\)](https://adafru.it/vVe)
- [SIM800H CE EMC Test Report \(https://adafru.it/vVf\)](https://adafru.it/vVf)
- [SIM800H CE RF-BT Test Report \(https://adafru.it/vVA\)](https://adafru.it/vVA)
- [SIM800H CE RF-GSM Test Report \(https://adafru.it/vVB\)](https://adafru.it/vVB)
- [SIM800H SAFETY Test Report \(https://adafru.it/vVC\)](https://adafru.it/vVC)
- [SIM800H EPL Certificate \(https://adafru.it/vVD\)](https://adafru.it/vVD)
- [FCC TCB BT \(https://adafru.it/kEu\)](https://adafru.it/kEu)
- [R&TTE Statement of Opinion \(https://adafru.it/kEv\)](https://adafru.it/kEv)
- [FCC Part 15B Test Report \(https://adafru.it/kEw\)](https://adafru.it/kEw)
- [FCC Part 15C Test Report \(https://adafru.it/kEx\)](https://adafru.it/kEx)
- [FCC RF Test Report \(https://adafru.it/kEy\)](https://adafru.it/kEy)
- [FCC TCB \(https://adafru.it/kEz\)](https://adafru.it/kEz)

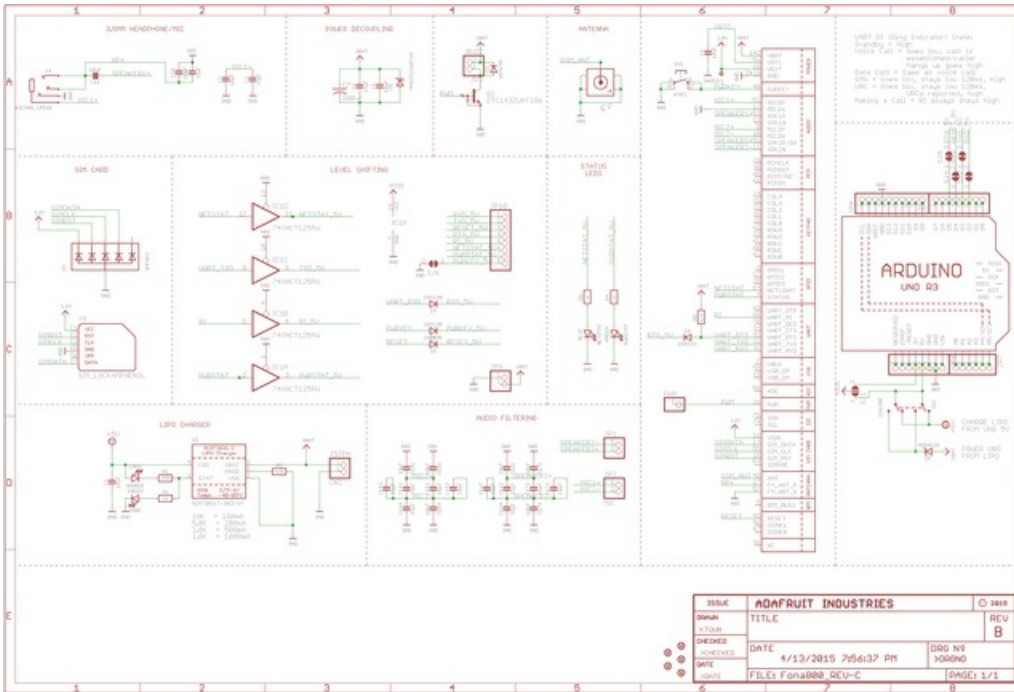
### Files

---

- [Fritzing object in the Adafruit Fritzing Library \(https://adafru.it/aP3\)](https://adafru.it/aP3)
- [EagleCAD PCB files on GitHub \(https://adafru.it/rEk\)](https://adafru.it/rEk)

# Schematic

(Click to embiggen)



# Fabrication Print

Dimensions in inches

