

PRODUCT NUMBER
73325-XXXLF

PLATING OPTION
1= GXT 0.76 μ m
3= GOLD 0.76 μ m
5= GOLD 1.27 μ m

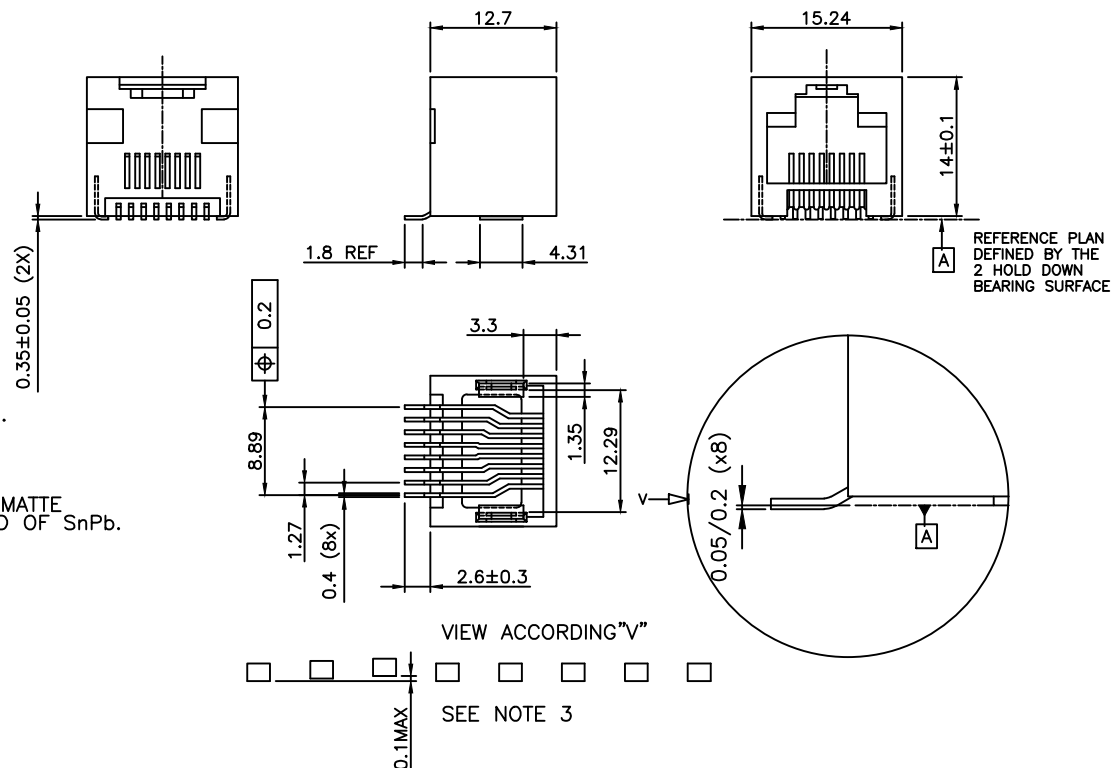
PACKAGE OPTION
1= TAPE ON REEL
2= TUBE
3= TAPE ON REEL IN PLASTIC BAG

TERMINAL LOADING
1= FULLY LOADED
2= POS 1,2,7,8
3= POS 3,4,5,6

WHEN NEEDED, SUFFIX LETTER "LF"
INDICATES THE PRODUCT IS RoHS
COMPATIBLE, SEE NOTE 4.

NOTES:

- 1- MATERIAL: HOUSING: HIGH TEMP. PCT, COLOUR BLACK.
TERMINAL: PHOSPHOR BRONZE.
- 2 - PLATING: CONTACT AREA: SEE TABLE.
SOLDER TAIL : 90/10 SnPb 2 μ m MIN.
WHEN SUFFIX "LF" IS REQUIRED, 2 μ m MIN MATTE
TIN OVER 1.27 MIN Ni IS SUPPLIED INSTEAD OF SnPb.
NO RAW EDGES EXEPT SOLDER TAIL TIPS
- 3 - SOLDER TAILS COPLANARITY : 0.1 mm
- 4 - RoHS COMPATIBLE PRODUCT SPECIFICATIONS
 - a - PLATING:
 - "LF" MEANS THE PRODUCT IS LEAD-FREE,
2 μ m MINIMUM MATTE TIN OVER 1.27 μ m
MINIMUM NICKEL UNDERPLATE.
 - b - MANUFACTURING PROCESS COMPATIBILITY
 - THE HOUSING WILL WITHSTAND EXPOSURE TO
245°C PEAK TEMPERATURE FOR 30 SECONDS
MAX IN A CONVECTION, INFRA-RED OR VAPOR
PHASE OR REFLOW OVEN.
 - c - LABELING:
 - MEETS PACKAGING SPECS AS PER GS-14-920
 - d - LEGAL STATEMENT: SEE GS-47-0004
- 5 - PACKAGING FOR OPTION 3 : EACH REEL IS WRAPPED INTO A PLASTIC BAG
TO PROTECT FROM MOISTURE DURING STACKING TIME.



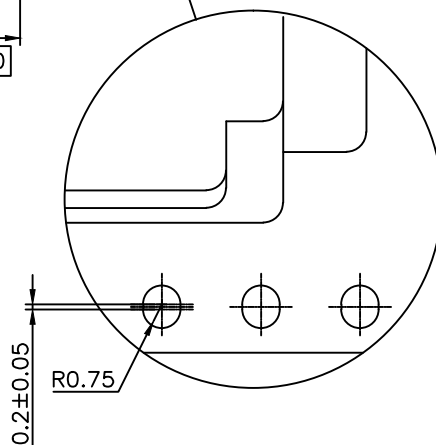
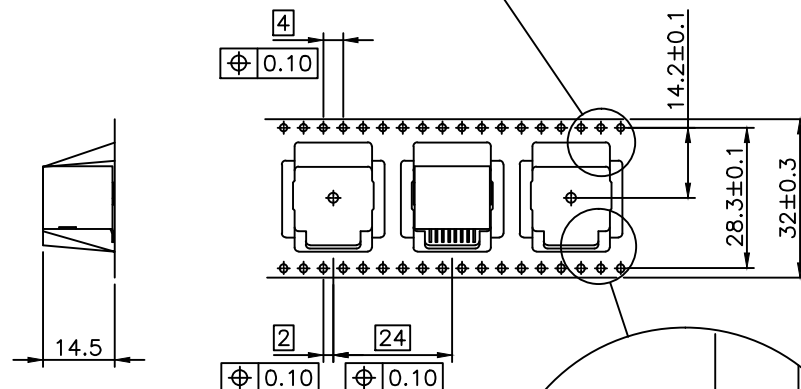
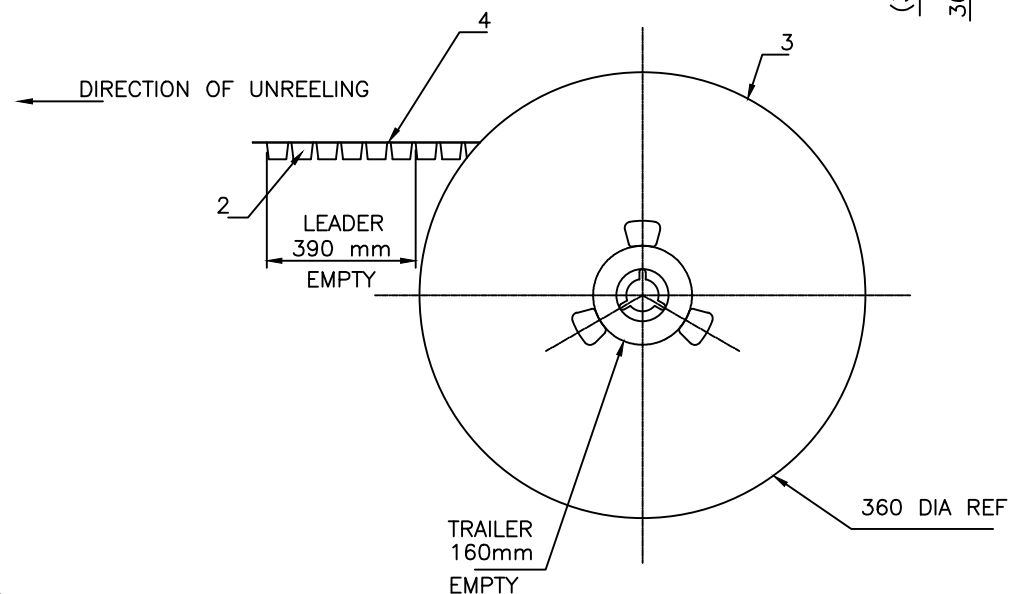
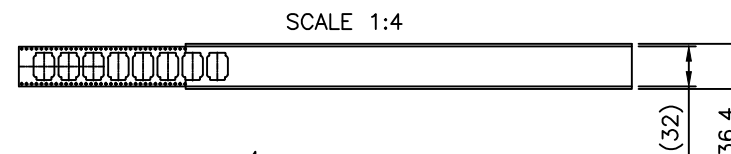
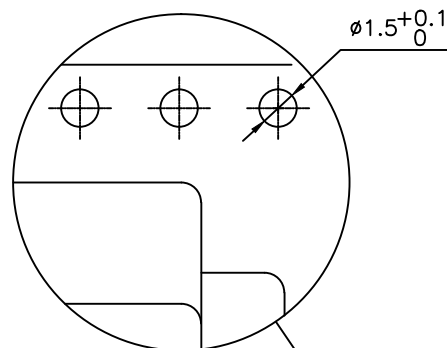
CUSTOMER COPY FOR REFERENCE ONLY

mat'l. code	surface	tolerance	projection	product family
	ISO 1302	ISO 406 ISO 1101		MOD JACK
ltr	ecn no	dr	date	tolerances unless otherwise specified
H	F06-0240	DLE	06.07.18	angles
J	F09-0070	LSA	09.07.23	linear
K	B-15798	JFA	13.09.09	±2'
L	F-21888	AMA	15.09.09	dr
				D LEGRAND 04.10.18
				enr P NIZZI 04.10.18
F	F04-0363	DLE	04.10.18	chr D LEGRAND 04.10.18
G	F05-0247	DLE	05.09.12	appd P NZ 04.10.18
sheet	revision	L	E	B
index	sheet	1	2	3

title	dwg no	sheet 1 of 3	size
SMT RA JACK 8 POS INSIDE	73325		A3
type	CUSTOMER Drawing		

PRODUCT NUMBER
SEE SHEET 1

LTR	PART NAME	QTY
1	PRODUCT	230
2	TAPE	1
3	REEL	1
4	COVER TAPE	1



1- IN ACCORDANCE WITH EIA-481 AND IEC 296-3

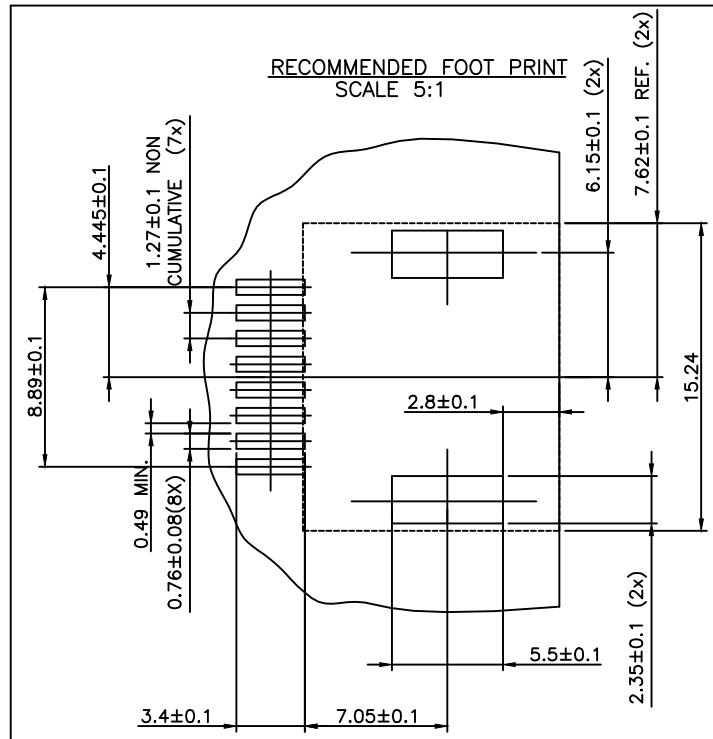
CUSTOMER COPY FOR REFERENCE ONLY

mat'l. code				surface	tolerance	projection	product family
				ISO 1302	ISO 406 ISO 1101		MOD-JACK
ltr	ecr no	dr	date	tolerances unless otherwise specified			title
D	F80620	DLE	98.11.26	angles			SMT RA JACK
E	F06-0240	DLE	06.07.18	linear			8 POS. INSIDE
				dr	D LEGRAND	06.07.18	dwg no
				enrg	P NIZZI	06.07.18	73325
				chr	D LE	06.07.18	sheet 2 of 3
				appd	P NZ	06.07.18	size
							A3
							type
							CUSTOMER Drawing
sheet index	revision	sheet					


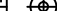


FCIconnect.com

Copyright FCI



CUSTOMER COPY FOR REFERENCE ONLY

mat'l. code				surface <input checked="" type="checkbox"/> ISO 1302 <input checked="" type="checkbox"/> tolerance ISO 406 ISO 1101		projection 	product family MOD JACK	
ltr	ecr no	dr	date	tolerances unless otherwise specified			title	
A	F04-0363	DLE	04.10.18	angles	±0.13		SMT RA JACK	
B	F06-0240	DLE	06.07.18	linear		mm	8 POS INSIDE	
				±2'		scale 2:1		
				dr	D LEGRAND	04.10.18	dwg no	sheet 3 of - size
				enr	P NIZZI	04.10.18		
				chr	D LEGRAND	04.10.18		
				app	P NZ	04.10.18		
sheet index				revision sheet		type CUSTOMER Drawing		

form: A4

Mouser Electronics

Authorized Distributor

Click to View Pricing, Inventory, Delivery & Lifecycle Information:

[FCI / Amphenol:](#)

[73325-111LF](#) [73325-311LF](#) [73325-511LF](#)