

Contact insert - RC-19P1N120000 - 1602482

Please be informed that the data shown in this PDF Document is generated from our Online Catalog. Please find the complete data in the user's documentation. Our General Terms of Use for Downloads are valid (<http://phoenixcontact.com/download>)




Contact insert, number of positions: 16+3, type of contact: Pin, Solder connection

The figure shows the 12-pos. product version



Key Commercial Data

| | |
|------------------------|---|
| Packing unit | 10 pc |
| Minimum order quantity | 10 pc |
| GTIN |  4 046356 239844 |
| GTIN | 4046356239844 |

Technical data

General

| | |
|--|----------------------|
| Insertion/withdrawal cycles mechanical | 50 |
| Direction of rotation of contact chamber numbering | Standard |
| Coding | N |
| Contact connection method | Solder connection |
| Type of contacts | Pin |
| Number of positions | 19 |
| Contact diameter of power contacts | 1.5 mm |
| Litz wire cross section of power contacts min. | 0.08 mm ² |
| Litz wire cross section of power contacts max. | 1 mm ² |
| Rated current for power contacts | 10 A |
| Contact diameter of signal contacts | 1 mm |
| Litz wire cross section of signal contacts min. | 0.08 mm ² |
| Litz wire cross section of signal contacts max. | 1 mm ² |
| Nominal current per signal contact | 8 A |

Contact insert - RC-19P1N120000 - 1602482

Technical data

Material

| | |
|--------------------|-----------------------------|
| Insulator material | PA66 |
| Contact material | CuZn |
| Contact surface | Nickel-plated, gold coating |

Specifications according to DIN EN 61984:2001

| | |
|--|---------|
| Nominal / operating voltage of power contacts | 48 V AC |
| | 74 V DC |
| Rated surge voltage of power contacts | 1.5 kV |
| Overvoltage category of power contacts | II |
| Degree of pollution of power contacts | 3 |
| Nominal / operating voltage of signal contacts | 150 V |
| Overvoltage category of signal contacts | II |
| Degree of pollution of signal contacts | 3 |

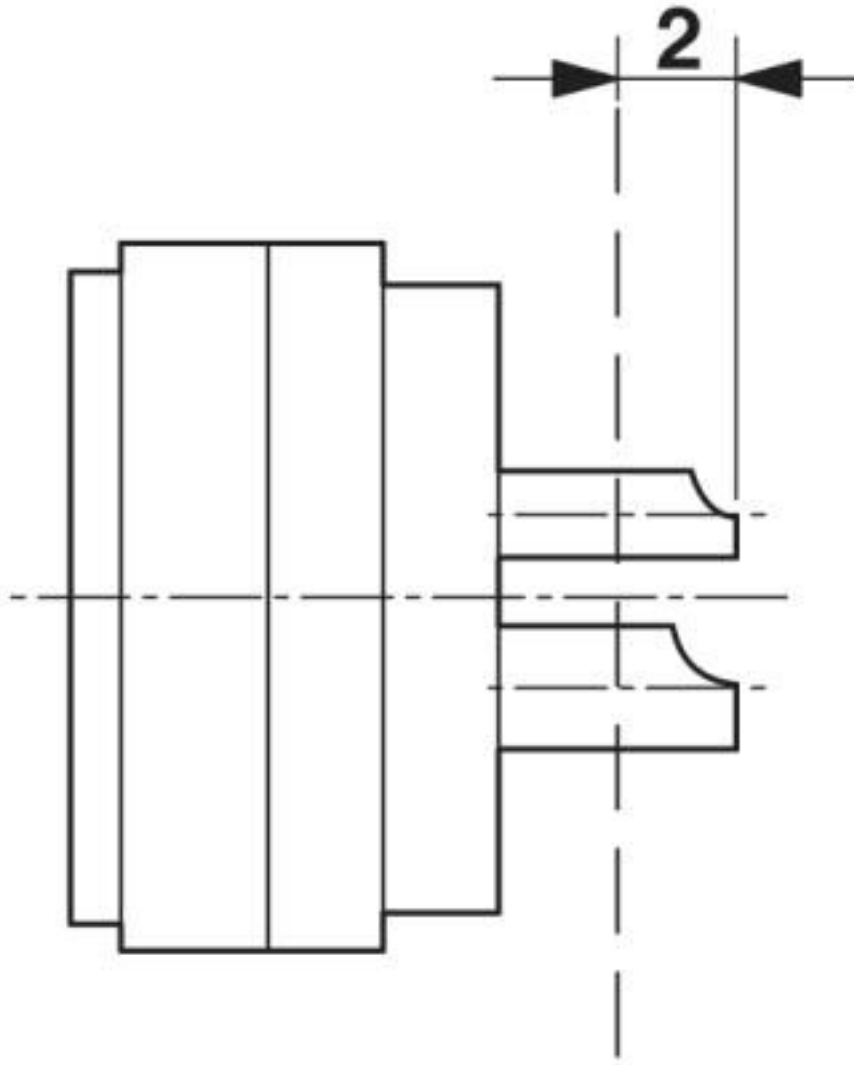
Environmental Product Compliance

| | |
|------------|---|
| REACH SVHC | Lead 7439-92-1 |
| China RoHS | Environmentally Friendly Use Period = 50 years |
| | For details about hazardous substances go to tab "Downloads", Category "Manufacturer's declaration" |

Drawings

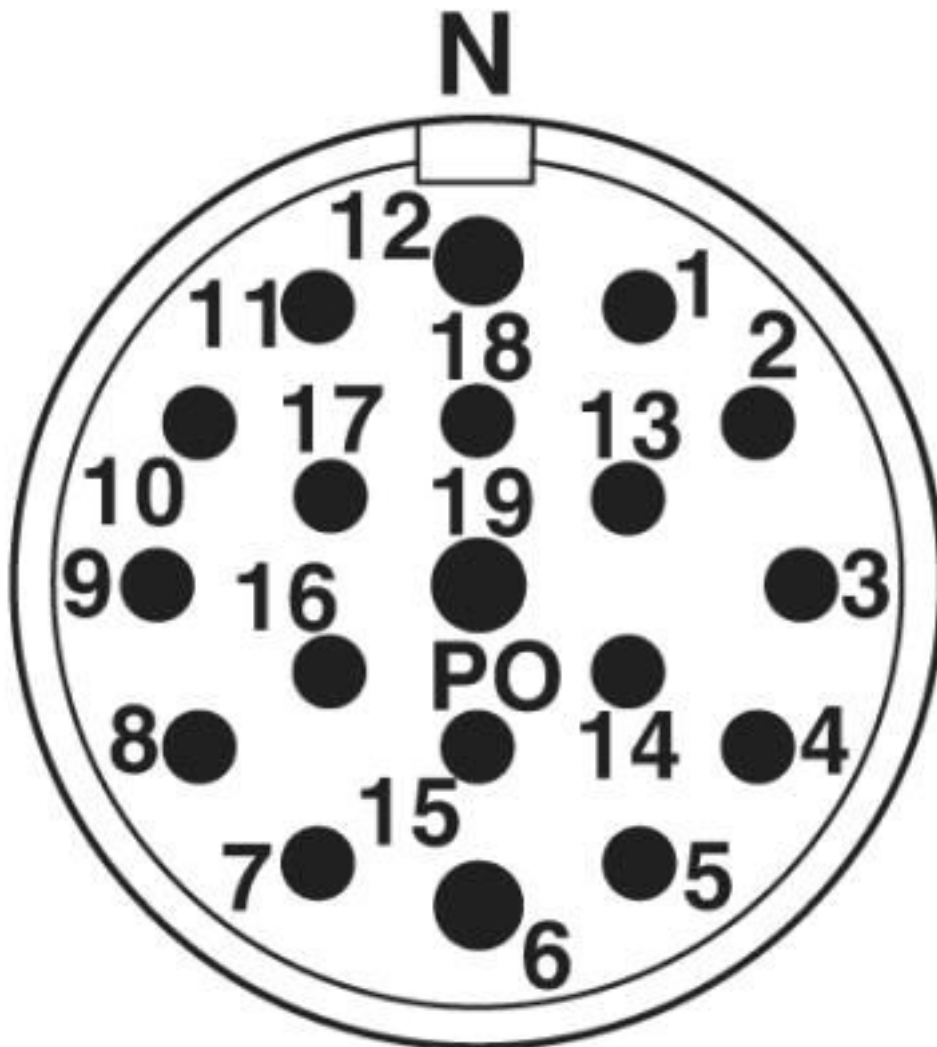
Contact insert - RC-19P1N120000 - 1602482

Schematic diagram



Contact insert - RC-19P1N120000 - 1602482

Schematic diagram



Classifications

eCl@ss

| | |
|---------------|----------|
| eCl@ss 10.0.1 | 27440205 |
| eCl@ss 11.0 | 27440223 |
| eCl@ss 4.0 | 27260700 |
| eCl@ss 4.1 | 27260700 |
| eCl@ss 5.0 | 27260700 |
| eCl@ss 5.1 | 27261200 |
| eCl@ss 6.0 | 27261200 |
| eCl@ss 7.0 | 27440205 |
| eCl@ss 8.0 | 27440205 |
| eCl@ss 9.0 | 27440205 |

Contact insert - RC-19P1N120000 - 1602482

Classifications

ETIM

| | |
|----------|----------|
| ETIM 3.0 | EC001121 |
| ETIM 4.0 | EC001121 |
| ETIM 5.0 | EC000438 |
| ETIM 6.0 | EC000438 |
| ETIM 7.0 | EC000438 |

UNSPSC

| | |
|---------------|----------|
| UNSPSC 6.01 | 43172015 |
| UNSPSC 7.0901 | 43201404 |
| UNSPSC 11 | 43172015 |
| UNSPSC 12.01 | 43201404 |
| UNSPSC 13.2 | 39121522 |
| UNSPSC 18.0 | 39121522 |
| UNSPSC 19.0 | 39121522 |
| UNSPSC 20.0 | 39121522 |
| UNSPSC 21.0 | 39121522 |

Approvals

Approvals

Approvals

EAC

Ex Approvals

Approval details

| | | |
|-----|---|---------|
| EAC |  | B.01687 |
|-----|---|---------|
