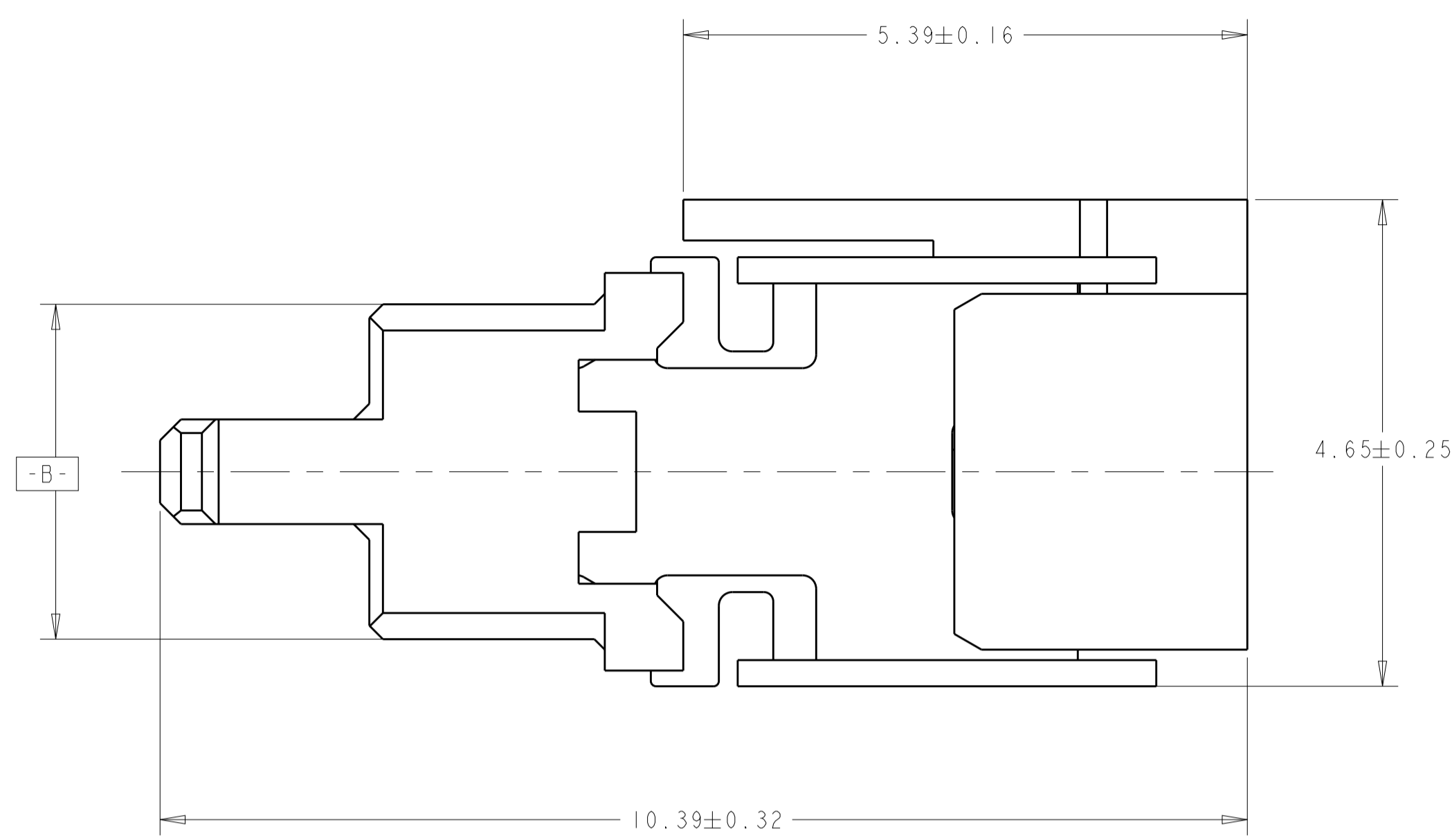
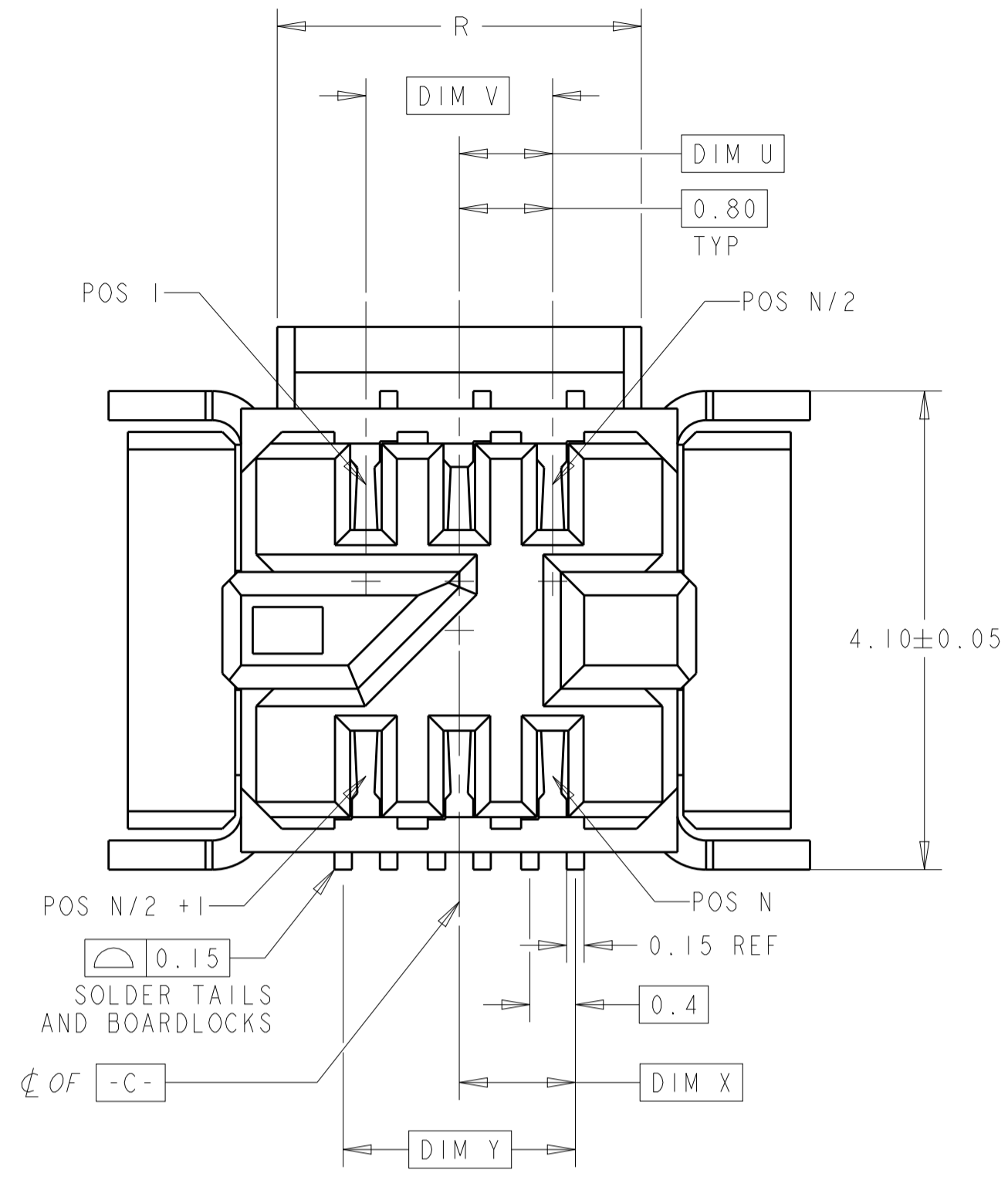
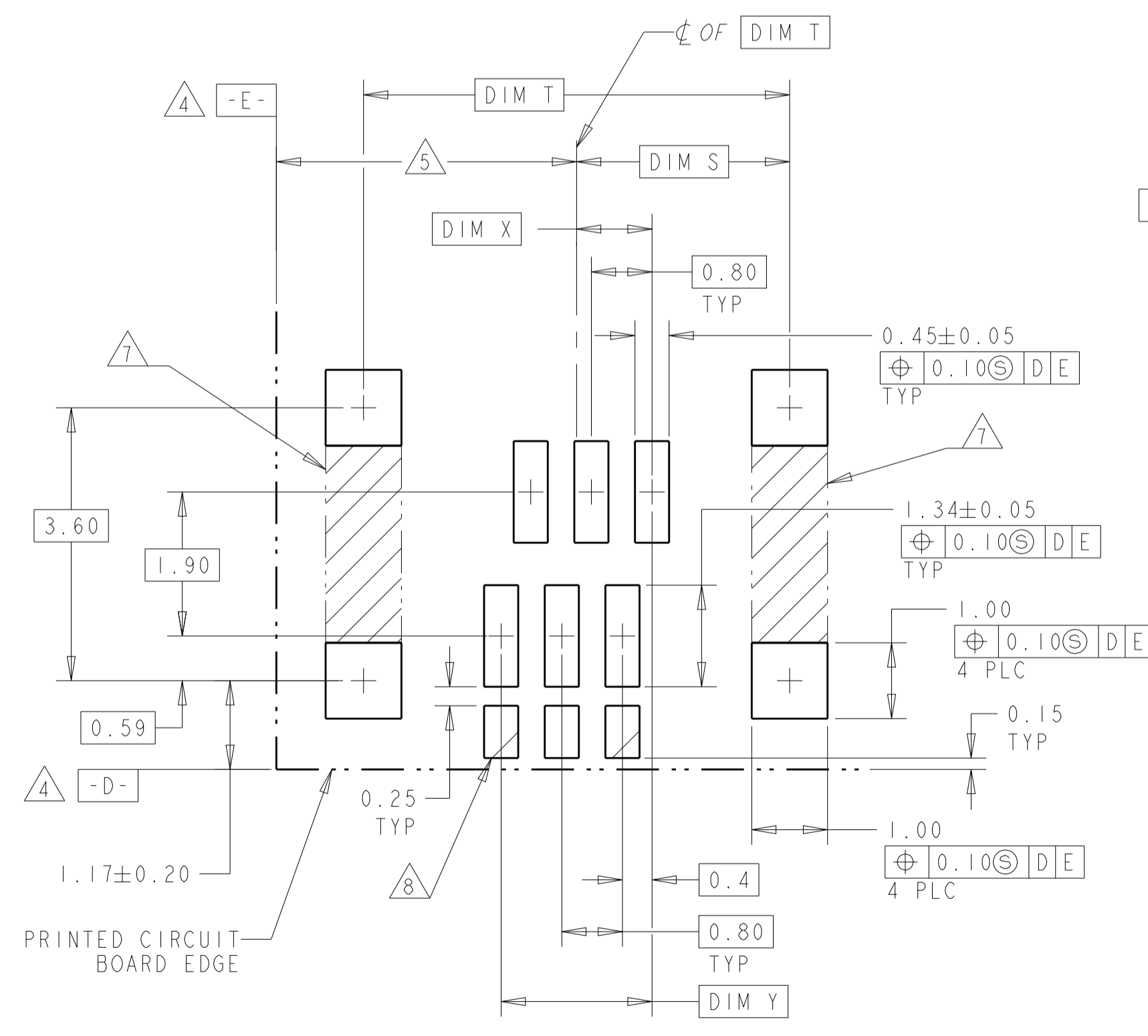
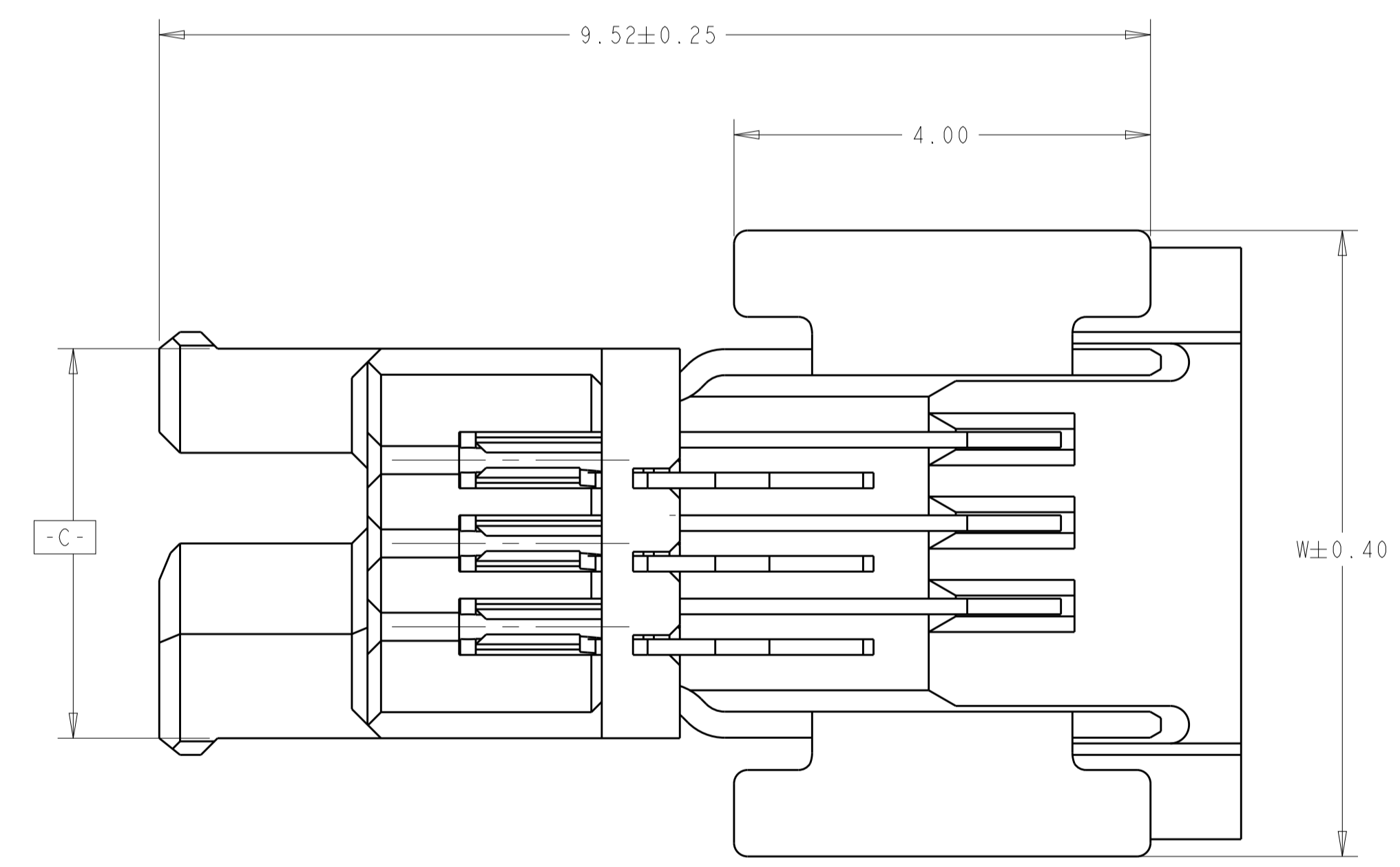


| REVISIONS | | | | |
|-----------|-----|---------------------------|-----------|-------|
| P. | LTN | DESCRIPTION | DATE | APPV |
| B | | REVISED PER ECO-15-004627 | 25MAR2015 | NK MM |



- 1 HOUSING & ORGANIZER MATERIAL; UL94 V-0 RATED LCP, COLOR: NATURAL
CONTACT MATERIAL: PHOS BRONZE
BOARDLOCK MATERIAL: BRASS
- 2 CONTACT PLATING; 0.76 μm MIN GOLD IN MATING AREA
2.54μm - 5.08μm MATTE TIN LEAD IN SOLDER AREA.
BOTH OVER 1.27μm MIN NICKEL ON ENTIRE STOCK.
- 3 BOARDLOCK PLATING; 3.8 μm MIN BRIGHT TIN/LEAD ON ENTIRE STOCK
OVER 1.27 μm MIN NICKEL ON ENTIRE STOCK.
- 4 DATUM ESTABLISHED BY CUSTOMER.
- 5 BASIC DIMENSIONS ESTABLISHED BY CUSTOMER.
- 6. THIS PRODUCT HAS NOT COMPLETED VALIDATION TESTING.
- 7 NO TRACES ON EXTERNAL BOARD LAYER IN THIS AREA, KEEPOUT.
- 8 NO SOLDER PASTE PERMITTED ON THESE PADS.
- 9 CONTACT PLATING; 0.76 μm MIN GOLD IN MATING AREA
2.54μm - 5.08μm TIN IN SOLDER AREA.
BOTH OVER 1.27μm MIN NICKEL ON ENTIRE STOCK.
- 10 BOARDLOCK PLATING; 3.8 μm MIN TIN ON ENTIRE STOCK
OVER 1.27 μm MIN NICKEL ON ENTIRE STOCK.
- 11 ROHS 2002/95/EC COMPLIANT.
- 12 OBSOLETE PARTS: OBSOLETE CIS STREAMLINING PER D.RENAUD/D.SINISI



PC BOARD LAYOUT
SCALE 15:1

- OBSOLETE
- OBSOLETE
- OBSOLETE
- OBSOLETE
- OBSOLETE
- OBSOLETE
- OBSOLETE
- OBSOLETE
- OBSOLETE
- OBSOLETE

| FINISH | R | DIM S | DIM T | DIM U | DIM V | W | DIM X | DIM Y | NO. OF POS N | PART NUMBER |
|--------|-------|-------|-------|-------|-------|-------|-------|-------|--------------|-------------|
| | 16.72 | 9.61 | 19.22 | 7.60 | 15.20 | 19.61 | 7.8 | 15.6 | 40 | 6-1445297-8 |
| | 15.92 | 9.21 | 18.42 | 7.20 | 14.40 | 18.81 | 7.4 | 14.8 | 38 | 6-1445297-7 |
| | 15.12 | 8.81 | 17.62 | 6.80 | 13.60 | 18.01 | 7.0 | 14.0 | 36 | 6-1445297-6 |
| | 14.32 | 8.41 | 16.82 | 6.40 | 12.80 | 17.21 | 6.6 | 13.2 | 34 | 6-1445297-5 |
| | 13.52 | 8.01 | 16.02 | 6.00 | 12.00 | 16.41 | 6.2 | 12.4 | 32 | 6-1445297-4 |
| | 12.72 | 7.61 | 15.22 | 5.60 | 11.20 | 15.61 | 5.8 | 11.6 | 30 | 6-1445297-3 |
| | 11.92 | 7.21 | 14.42 | 5.20 | 10.40 | 14.81 | 5.4 | 10.8 | 28 | 6-1445297-2 |
| | 11.12 | 6.81 | 13.62 | 4.80 | 9.60 | 14.01 | 5.0 | 10.0 | 26 | 6-1445297-1 |
| | 10.32 | 6.41 | 12.82 | 4.40 | 8.80 | 13.21 | 4.6 | 9.2 | 24 | 6-1445297-0 |
| | 9.52 | 6.01 | 12.02 | 4.00 | 8.00 | 12.41 | 4.2 | 8.4 | 22 | 5-1445297-9 |
| | 8.72 | 5.61 | 11.22 | 3.60 | 7.20 | 11.61 | 3.8 | 7.6 | 20 | 5-1445297-8 |
| | 7.92 | 5.21 | 10.42 | 3.20 | 6.40 | 10.81 | 3.4 | 6.8 | 18 | 5-1445297-7 |
| | 7.12 | 4.81 | 9.62 | 2.80 | 5.60 | 10.01 | 3.0 | 6.0 | 16 | 5-1445297-6 |
| | 6.32 | 4.41 | 8.82 | 2.40 | 4.80 | 9.21 | 2.6 | 5.2 | 14 | 5-1445297-5 |
| | 5.52 | 4.01 | 8.02 | 2.00 | 4.00 | 8.41 | 2.2 | 4.4 | 12 | 5-1445297-4 |
| | 4.72 | 3.61 | 7.22 | 1.60 | 3.20 | 7.61 | 1.8 | 3.6 | 10 | 5-1445297-3 |
| | 3.92 | 3.21 | 6.42 | 1.20 | 2.40 | 6.81 | 1.4 | 2.8 | 8 | 5-1445297-2 |
| | 3.12 | 2.81 | 5.62 | 0.80 | 1.60 | 6.01 | 1.0 | 2.0 | 6 | 5-1445297-1 |
| | 16.72 | 9.61 | 19.22 | 7.60 | 15.20 | 19.61 | 7.8 | 15.6 | 40 | 1-1445297-8 |
| | 15.92 | 9.21 | 18.42 | 7.20 | 14.40 | 18.81 | 7.4 | 14.8 | 38 | 1-1445297-7 |
| | 15.12 | 8.81 | 17.62 | 6.80 | 13.60 | 18.01 | 7.0 | 14.0 | 36 | 1-1445297-6 |
| | 14.32 | 8.41 | 16.82 | 6.40 | 12.80 | 17.21 | 6.6 | 13.2 | 34 | 1-1445297-5 |
| | 13.52 | 8.01 | 16.02 | 6.00 | 12.00 | 16.41 | 6.2 | 12.4 | 32 | 1-1445297-4 |
| | 12.72 | 7.61 | 15.22 | 5.60 | 11.20 | 15.61 | 5.8 | 11.6 | 30 | 1-1445297-3 |
| | 11.92 | 7.21 | 14.42 | 5.20 | 10.40 | 14.81 | 5.4 | 10.8 | 28 | 1-1445297-2 |
| | 11.12 | 6.81 | 13.62 | 4.80 | 9.60 | 14.01 | 5.0 | 10.0 | 26 | 1-1445297-1 |
| | 10.32 | 6.41 | 12.82 | 4.40 | 8.80 | 13.21 | 4.6 | 9.2 | 24 | 1-1445297-0 |
| | 9.52 | 6.01 | 12.02 | 4.00 | 8.00 | 12.41 | 4.2 | 8.4 | 22 | 1445297-9 |
| | 8.72 | 5.61 | 11.22 | 3.60 | 7.20 | 11.61 | 3.8 | 7.6 | 20 | 1445297-8 |
| | 7.92 | 5.21 | 10.42 | 3.20 | 6.40 | 10.81 | 3.4 | 6.8 | 18 | 1445297-7 |
| | 7.12 | 4.81 | 9.62 | 2.80 | 5.60 | 10.01 | 3.0 | 6.0 | 16 | 1445297-6 |
| | 6.32 | 4.41 | 8.82 | 2.40 | 4.80 | 9.21 | 2.6 | 5.2 | 14 | 1445297-5 |
| | 5.52 | 4.01 | 8.02 | 2.00 | 4.00 | 8.41 | 2.2 | 4.4 | 12 | 1445297-4 |
| | 4.72 | 3.61 | 7.22 | 1.60 | 3.20 | 7.61 | 1.8 | 3.6 | 10 | 1445297-3 |
| | 3.92 | 3.21 | 6.42 | 1.20 | 2.40 | 6.81 | 1.4 | 2.8 | 8 | 1445297-2 |
| | 3.12 | 2.81 | 5.62 | 0.80 | 1.60 | 6.01 | 1.0 | 2.0 | 6 | 1445297-1 |

12 SUPERCEDED BY 6-1445297-3

THIS DRAWING IS A CONTROLLED DOCUMENT. DWG: R.L.KOLLER 14MAY2001
 CHK: L.BREKOSKY 07AUG2001
 APPV: -

DIMENSIONS: mm
 TOLERANCES UNLESS OTHERWISE SPECIFIED:
 0 PLC ±0.2
 1 PLC ±0.25
 2 PLC ±0.3
 3 PLC ±0.38
 4 PLC ±0.45
 ANGLES ±0.1°

MATERIAL: SEE TABLE
 FINISH: SEE TABLE

Customer Drawing

NAME: AMPMODU MICRO INTERCONNECT RECEPTACLE ASSEMBLY, RIGHT ANGLE
 SIZE: A1
 CAGE CODE: -
 DRAWING NO: 1445297
 SHEET 1 OF 1
 REV B

SCALE: 20:1

Mouser Electronics

Authorized Distributor

Click to View Pricing, Inventory, Delivery & Lifecycle Information:

[TE Connectivity:](#)

[5-1445297-1](#)