

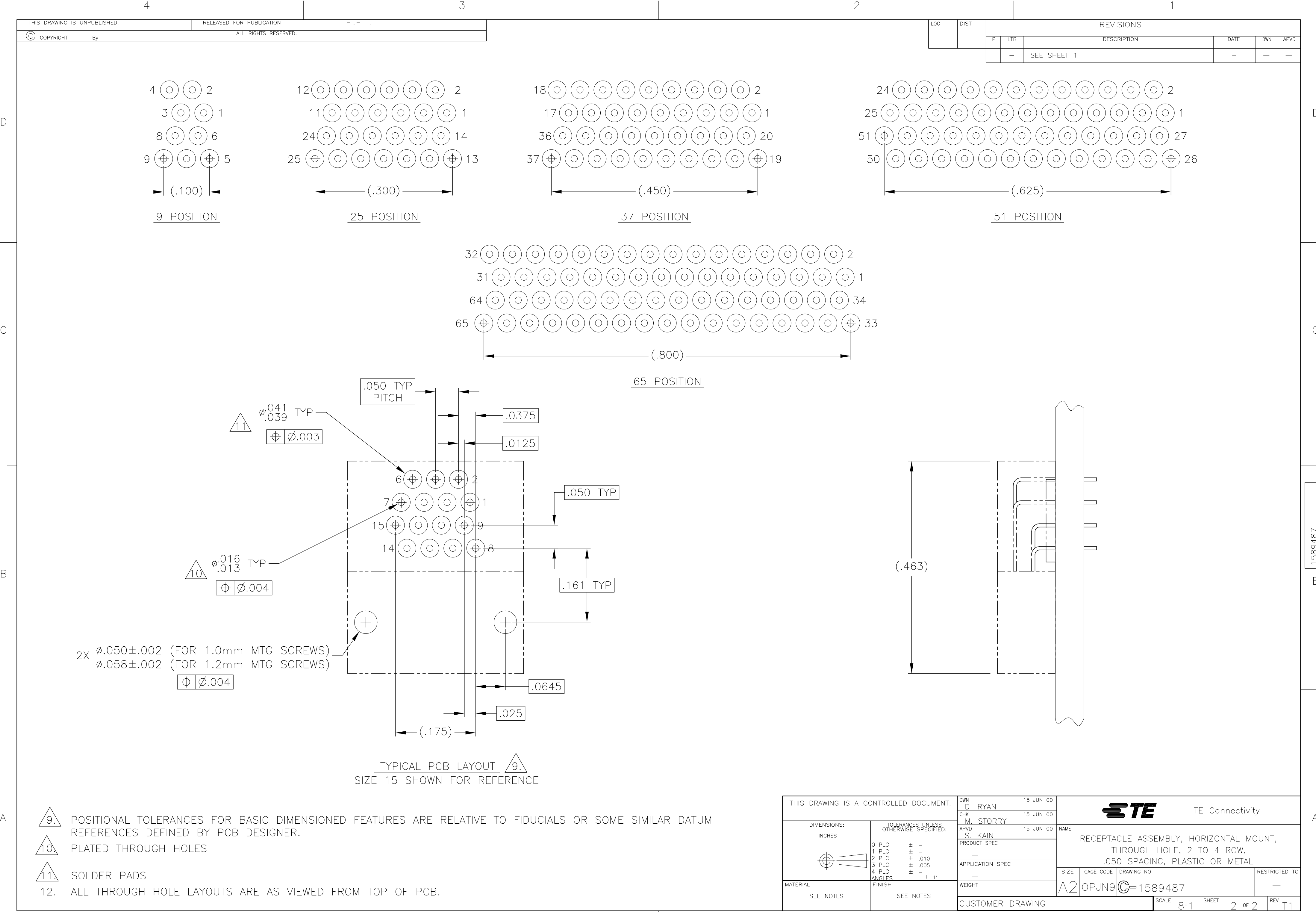

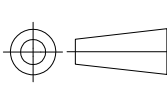


SIZE	B DIM	C DIM ±.0050	(L DIM)
09	.229	.3085	(.100)
15	.304	.3835	(.175)
25	.429	.5085	(.300)
37	.579	.6585	(.450)
51	.754	.8335	(.625)
65	.929	1.0085	(.800)

1. SHELL OPTIONS (TO BE SPECIFIED IN NANONICS PART NUMBER):  
 METAL: 6061-T6 ALUMINUM, ELECTROLESS NICKEL PLATED PER SAE-AMS-C-26074 (STANDARD) OR GOLD PLATED PER ASTM B488  
 303 STAINLESS STEEL, PASSIVATED PER SAE-AMS-2700  
 INSULATOR MATERIAL FOR ALL METAL SHELLS IS LIQUID CRYSTAL POLYMER (LCP) PER MIL-M-24519 OR PER ASTM D5138  
 PLASTIC: LIQUID CRYSTAL POLYMER (LCP) PER MIL-M-24519 OR PER ASTM D5138
  2. STANDARD 1.0 X 0.25mm MOUNTING AND JACKSCREW THREADS ARE SHOWN FOR REFERENCE ONLY AND MUST BE SPECIFIED IN THE NANONICS PART NUMBER WHEN REQUIRED. 1.2 X 0.25mm THREADS ALSO AVAILABLE.
  3. MOUNTING HARDWARE IS AVAILABLE WITH THIS CONFIGURATION (NOT SHOWN). HARDWARE MUST BE SPECIFIED IN THE NANONICS PART NUMBER. CONSULT TE CONNECTIVITY FOR DETAILS.
  4. LEADS ARE HH BRASS, TIN LEAD PLATED 60/40 COMPOSITION PER SAE-AMS-P-81728.
  5. LEAD ORGANIZER MATERIAL IS LIQUID CRYSTAL POLYMER PER ASTM D5138.
  6. THROUGH HOLE LEADS ARE EPOXY ENCAPSULATED WITHIN THE LEAD ORGANIZER.
  7. TERMINATION CODE: M6
  8. THIS DRAWING PREVIOUSLY IDENTIFIED AS NANONICS **N10138/250**

THIS DRAWING IS A CONTROLLED DOCUMENT.		DWN D. RYAN 15 JUN 00 CHK 15 JUN 00 M. STORRY 15 JUN 00 APVD S. KAIN PRODUCT SPEC — APPLICATION SPEC — WEIGHT —		 TE Connectivity	
DIMENSIONS: INCHES  		TOLERANCES UNLESS OTHERWISE SPECIFIED: 0 PLC ± — 1 PLC ± — 2 PLC ± .010 3 PLC ± .005 4 PLC ± — ANGLES ± ± 1°		NAME RECEPTACLE ASSEMBLY, HORIZONTAL MOUNT, THROUGH HOLE, 2 TO 4 ROW, .050 SPACING, PLASTIC OR METAL	
MATERIAL SEE NOTES		FINISH SEE NOTES			
		SIZE A2		CAGE CODE OPJN9	
		DRAWING NO C-1589487		RESTRICTED TO —	
		SCALE 8:1		SHEET 1 of 2	
		REV T1			



THIS DRAWING IS A CONTROLLED DOCUMENT.		DWN D. RYAN 15 JUN 00		 TE Connectivity							
DIMENSIONS: INCHES		CHK M. STORRY 15 JUN 00									
	TOLERANCES UNLESS OTHERWISE SPECIFIED:		APVD S. KAIN 15 JUN 00		NAME  RECEPTACLE ASSEMBLY, HORIZONTAL MOUNT, THROUGH HOLE, 2 TO 4 ROW, .050 SPACING, PLASTIC OR METAL						
	0 PLC ± -		PRODUCT SPEC								
	1 PLC ± -		—								
	2 PLC ± .010		APPLICATION SPEC								
	3 PLC ± .005		—								
4 PLC ± -		—		SIZE	CAGE CODE	DRAWING NO		RESTRICTED TO			
ANGLES ± 1°		WEIGHT —		A2	0PJN9	C=1589487		—			
MATERIAL		FINISH		CUSTOMER DRAWING					SCALE 8:1	SHEET 2 OF 2	REV T1
SEE NOTES		SEE NOTES									

# Mouser Electronics

Authorized Distributor

Click to View Pricing, Inventory, Delivery & Lifecycle Information:

[TE Connectivity:](#)

[STM025M6HN](#)