

10	9	8	7	6	5	4	3	2	1
PART NUMBER	DESCRIPTION		SEE SHEET	STATUS					
180180-0000	HOLDER WITHOUT LENS		3	TOOLED					
180180-0001	HOLDER WITH LENS		3	NOT TOOLED					
180182-0000	COVER LENS ONLY		3	NOT TOOLED					
N/A	REFLECTOR OPTION (LEDIL)		4	AVAILABLE THRU LEDIL					

F

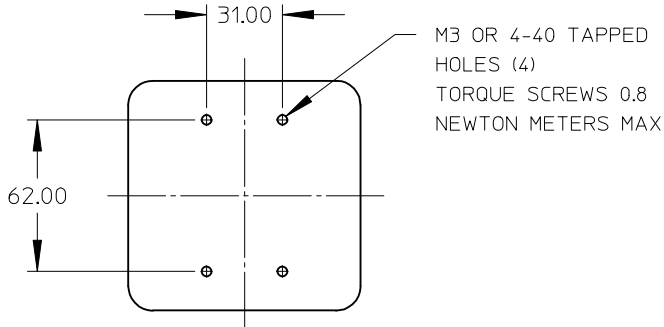
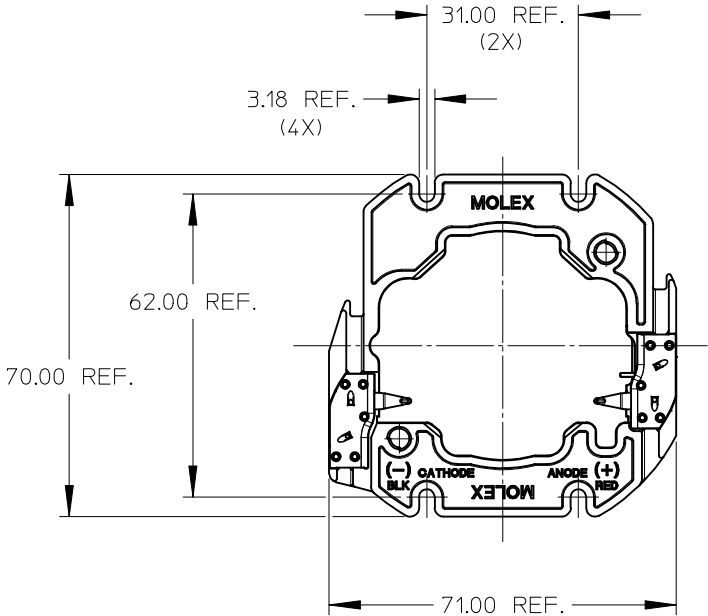
E

D

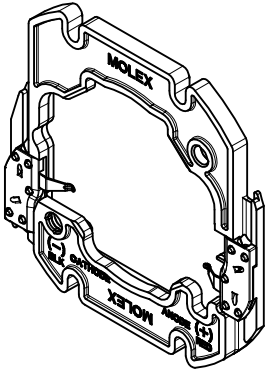
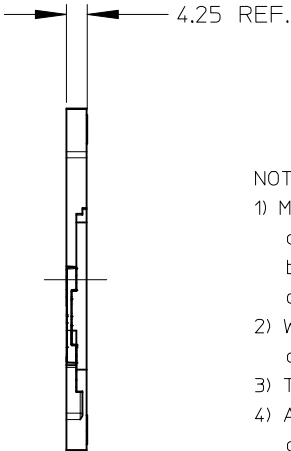
C

B

A



RECOMMENDED MOUNTING DIMENSIONS (NTS)



- NOTES:
- 1) MATERIALS:
    - a. CAPS: NATURAL COLOR PA66 NYLON 25% GF UL94V-0
    - b. HOUSING: NATURAL COLOR PA66 NYLON 25% GF UL94V-0
    - c. COVER LENS: CLEAR POLYCARBONATE UL 94HB
  - 2) WIRE TRAP TERMINALS: COPPER ALLOY
    - a. FINISH: SILVER OVER NICKEL
  - 3) THIS PRODUCT IS ELV AND ROHS COMPLIANT
  - 4) APPLICABLE WIRE GAUGE - 18 OR 20 AWG
    - a. SOLID WIRE IS RECOMMENDED
    - b. IF STRANDED WIRE IS USED, PRE-TINNED IS RECOMMENDED
    - c. 1 cm STRIP LENGTH IS RECOMMENDED
  - 5) MOUNT HOLDER USING M3 OR 4-40 SCREWS (4), 0.8 NEWTON METERS MAX TORQUE
  - 6) CONTACT AREA OF TERMINAL HAS AN ENVIRONMENTAL BARRIER/LUBRICANT FOR CORROSION RESISTANCE
  - 7) UL:OLFB2 UL496 FILE: E345583.

F


E

D

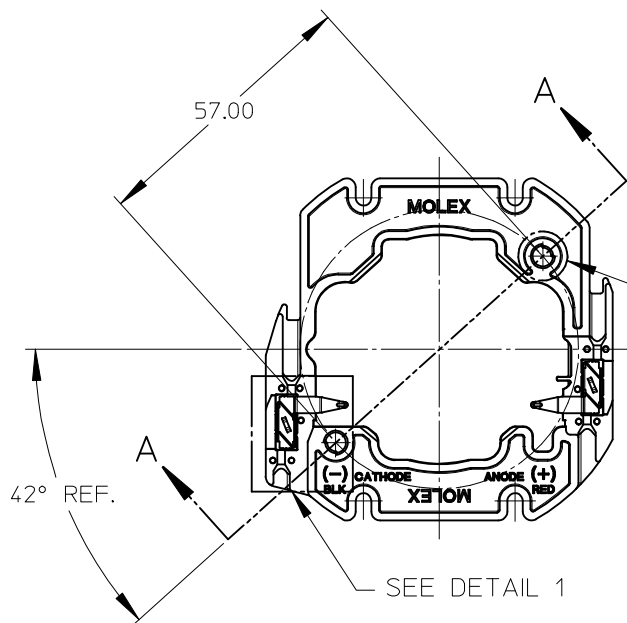
C

B

A

ENTER DESCRIPTION EC NO: SSL2016-0054 DRAWN: ZABJANOVSKI 2016/03/29 CHKD: APPR: GMEYER 2016/04/11		DESCRIPTION	QUALITY SYMBOLS	GENERAL TOLERANCES (UNLESS SPECIFIED)		DIMENSION STYLE		SCALE	DESIGN UNITS	THIRD ANGLE PROJECTION	
						MM ONLY		1:1	METRIC		
C2		REV	<div><div>F<sub>A</sub>=0</div><div>F<sub>G</sub>=0</div><div>F<sub>P</sub>=0</div></div>			DRAWN BY DATE		BRIDGELUX RS LED HOLDER			
				4 PLACES ± --- ± ---		CCARRANZA 2010/10/26					
				3 PLACES ± --- ± ---		CHECKED BY DATE					
				2 PLACES ± 0.13 ± ---		CCARRANZA 2012/11/06					
				1 PLACE ± 0.25 ± ---		APPROVED BY DATE					
				ANGULAR ± 1/2°		DMCGOWAN 2010/12/23		MOLEX MOLEX INCORPORATED			
				DRAFT WHERE APPLICABLE MUST REMAIN WITHIN DIMENSIONS		MATERIAL NO.		DOCUMENT NO.		SHEET NO.	
			SEE CHART			SD-180180-000		1 OF 4			
						SIZE B		THIS DRAWING CONTAINS INFORMATION THAT IS PROPRIETARY TO MOLEX INCORPORATED AND SHOULD NOT BE USED WITHOUT WRITTEN PERMISSION			

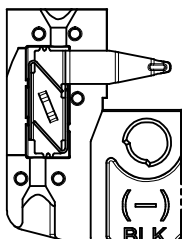
WIRE TRAP CAPS ARE REMOVED FROM FRONT VIEW FOR CLARITY



SEE DETAIL 3

SEE DETAIL 2

SEE DETAIL 1



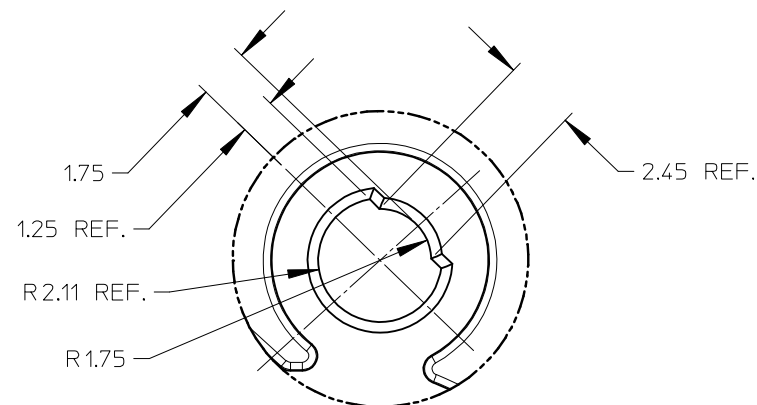
VIEW OF TWO-WAY WIRE TRAP

WIRE TRAPS WILL ACCOMODATE  
EITHER 18 OR 20 GAUGE WIRE

DETAIL 1 SCALE 2:1

4.25 REF.

SECTION A-A  
SCALE 1:1

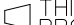


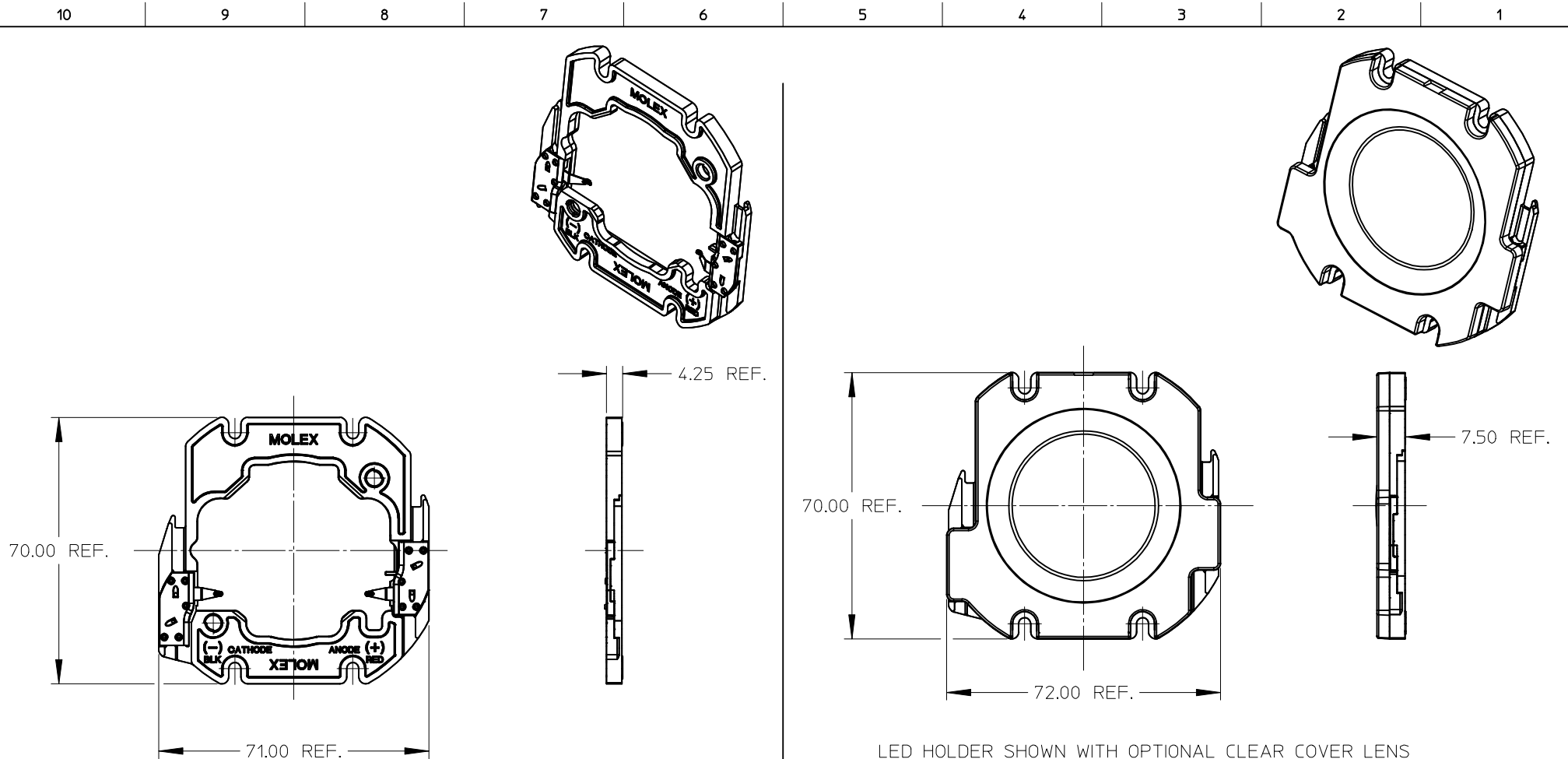
DETAIL 2 SCALE 6:1

1.13  
0.38

45° CHAMFER REF.

DETAIL 3 SCALE 6:1

ENTER DESCRIPTION EC NO: SSL2016-0054 CHKD: ZABJANOVSKI 2016/03/29 APPR: GMEYER 2016/04/11	DESCRIPTION	QUALITY SYMBOLS <div>FA=0</div> <div>FB=0</div> <div>FC=0</div>	GENERAL TOLERANCES (UNLESS SPECIFIED)		DIMENSION STYLE MM ONLY		SCALE 2:1	DESIGN UNITS METRIC	 THIRD ANGLE PROJECTION			
				mm	INCH	DRAWN BY CCARRANZA	DATE 2010/10/26	TITLE BRIDGELUX RS LED HOLDER				
			4 PLACES	± ---	± ---	CHECKED BY CCARRANZA	DATE 2012/11/06					
			3 PLACES	± ---	± ---			MOLEX INCORPORATED				
			2 PLACES	± 0.13	± ---							
			1 PLACE	± 0.25	± ---	APPROVED BY DMCGOWAN	DATE 2010/12/23	DOCUMENT NO. SD-180180-000		SHEET NO. 2 OF 4		
			ANGULAR ±1/2°		MATERIAL NO.							
			DRAFT WHERE APPLICABLE MUST REMAIN WITHIN DIMENSIONS				SEE CHART					
							SIZE B	THIS DRAWING CONTAINS INFORMATION THAT IS PROPRIETARY TO MOLEX INCORPORATED AND SHOULD NOT BE USED WITHOUT WRITTEN PERMISSION				



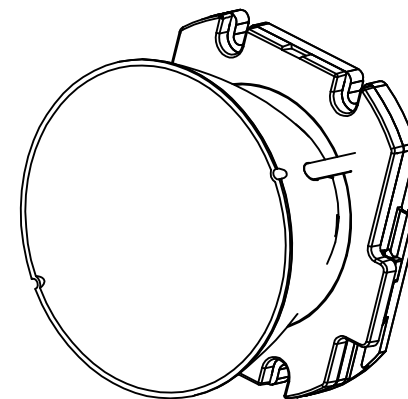
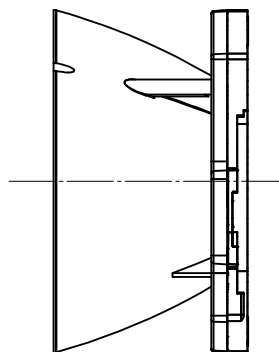
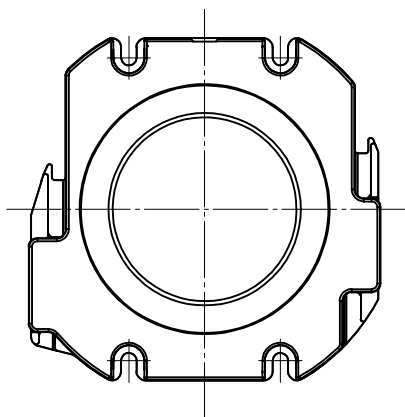
LED HOLDER PART NUMBER 180180-0000

LED HOLDER SHOWN WITH OPTIONAL CLEAR COVER LENS  
MOLEX INDIVIDUAL COVER LENS PART NUMBER 180182-0000  
HOLDER AND LENS ASSEMBLY PART NUMBER 180180-0001

ENTER DESCRIPTION EC NO: SSL2016-0054 DRAWN: ZABJANOVSKI 2016/03/29 CHKD: APPR: GMEYER 2016/04/11 REV		QUALITY SYMBOLS		GENERAL TOLERANCES (UNLESS SPECIFIED)		DIMENSION STYLE MM ONLY		SCALE 1:1		DESIGN UNITS METRIC		THIRD ANGLE PROJECTION	
		▽=0				DRAWN BY CCARRANZA		DATE 2010/10/26		BRIDGELUX RS LED HOLDER			
		▽=0				CHECKED BY		DATE 2012/11/06					
		▽=0				APPROVED BY		DATE 2010/12/23					
				ANGULAR ±1/2°		MATERIAL NO.		DOCUMENT NO.		MOLEX INCORPORATED			
						SEE CHART		SD-180180-000					
				DRAFT WHERE APPLICABLE MUST REMAIN WITHIN DIMENSIONS		SIZE B		THIS DRAWING CONTAINS INFORMATION THAT IS PROPRIETARY TO MOLEX INCORPORATED AND SHOULD NOT BE USED WITHOUT WRITTEN PERMISSION					
												SHEET NO. 3 OF 4	

10 9 8 7 6 5 4 3 2 1

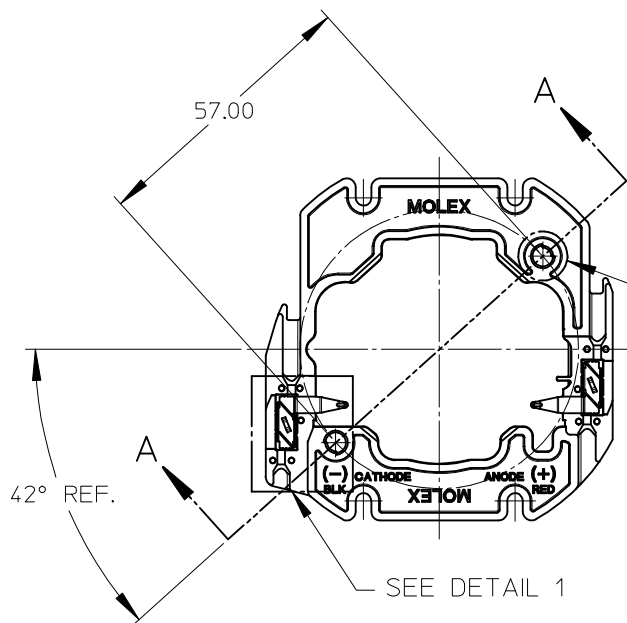
SHOWN WITH OPTIONAL REFLECTOR  
SOLD SEPARATELY BY LEDIL @ [www.ledil.com](http://www.ledil.com)



ENTER DESCRIPTION EC NO: SSL2016-0054 DRAWN: ZABJANOVSKI 2016/03/29 CHKD: APPR: GMEYER 2016/04/11 C2	DESCRIPTION REV	QUALITY SYMBOLS  F=0 F=0 F=0	GENERAL TOLERANCES (UNLESS SPECIFIED)		DIMENSION STYLE MM ONLY		SCALE 1:1	DESIGN UNITS METRIC	THIRD ANGLE PROJECTION	
					DRAWN BY CCARRANZA	DATE 2010/10/26	TITLE BRIDGELUX RS LED HOLDER			
					CHECKED BY CCARRANZA	DATE 2012/11/06				
					APPROVED BY DMCGOWAN	DATE 2010/12/23	MOLEX INCORPORATED			
					MATERIAL NO.			DOCUMENT NO.		SHEET NO. 4 OF 4
					DRAFT WHERE APPLICABLE MUST REMAIN WITHIN DIMENSIONS		SIZE B	THIS DRAWING CONTAINS INFORMATION THAT IS PROPRIETARY TO MOLEX INCORPORATED AND SHOULD NOT BE USED WITHOUT WRITTEN PERMISSION		



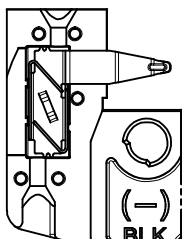
WIRE TRAP CAPS ARE REMOVED FROM FRONT VIEW FOR CLARITY



SEE DETAIL 3

SEE DETAIL 2

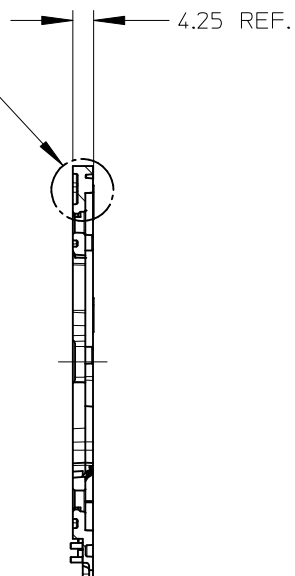
SEE DETAIL 1



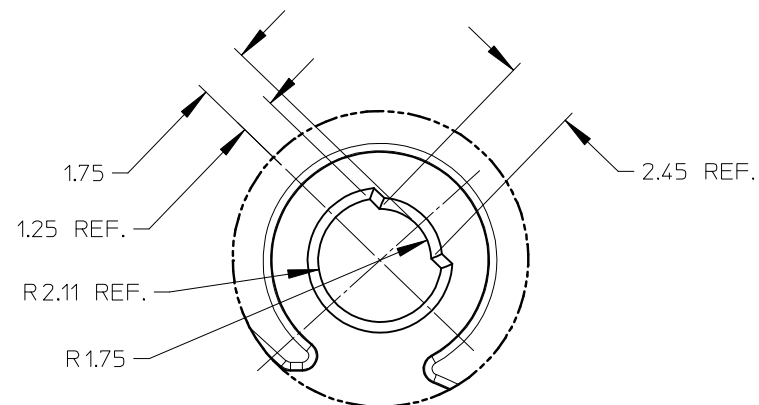
VIEW OF TWO-WAY WIRE TRAP

WIRE TRAPS WILL ACCOMODATE  
EITHER 18 OR 20 GAUGE WIRE

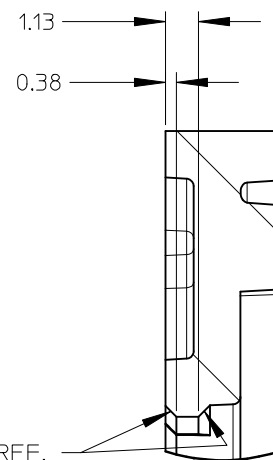
DETAIL 1 SCALE 2:1



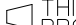

SECTION A-A  
SCALE 1:1

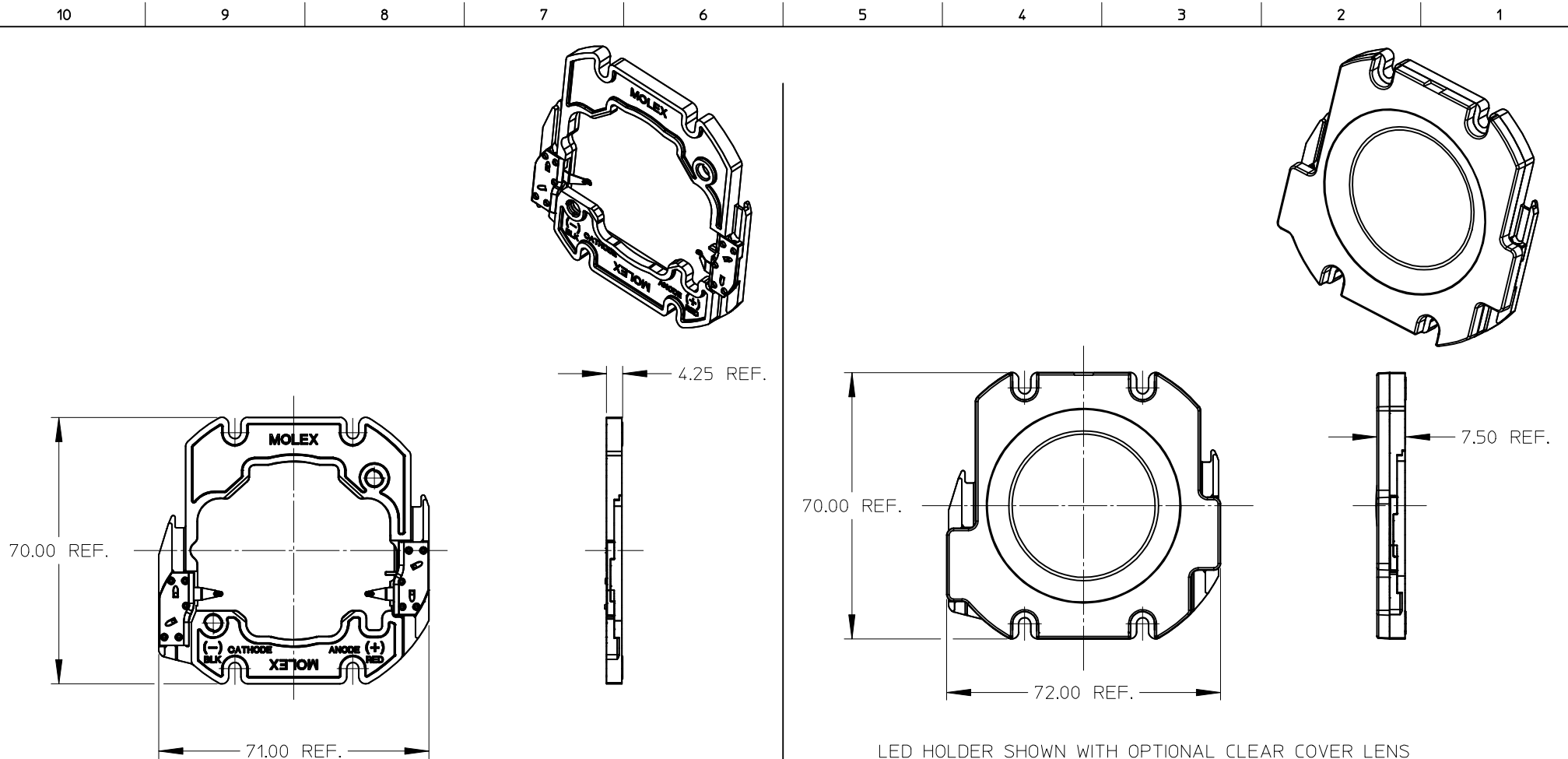


DETAIL 2 SCALE 6:1



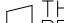

DETAIL 3 SCALE 6:1

ENTER DESCRIPTION EC NO: SSL2016-0054 CHKD: ZABJANOVSKI 2016/03/29 APPR: GMEYER 2016/04/11	DESCRIPTION	QUALITY SYMBOLS <div>FA=0</div> <div>FB=0</div> <div>FC=0</div>	GENERAL TOLERANCES (UNLESS SPECIFIED)		DIMENSION STYLE MM ONLY		SCALE 2:1	DESIGN UNITS METRIC	 THIRD ANGLE PROJECTION
				mm	INCH	DRAWN BY CCARRANZA	DATE 2010/10/26	TITLE BRIDGELUX RS LED HOLDER	
			4 PLACES	± ---	± ---	CHECKED BY CCARRANZA	DATE 2012/11/06		
			3 PLACES	± ---	± ---			MOLEX INCORPORATED	
			2 PLACES	± 0.13	± ---				
			1 PLACE	± 0.25	± ---				
			ANGULAR ±1/2°		APPROVED BY DMCGOWAN	DATE 2010/12/23			
DRAFT WHERE APPLICABLE MUST REMAIN WITHIN DIMENSIONS		MATERIAL NO. SEE CHART		DOCUMENT NO. SD-180180-000		SHEET NO. 2 OF 4			
C2	REV		SIZE B		THIS DRAWING CONTAINS INFORMATION THAT IS PROPRIETARY TO MOLEX INCORPORATED AND SHOULD NOT BE USED WITHOUT WRITTEN PERMISSION				



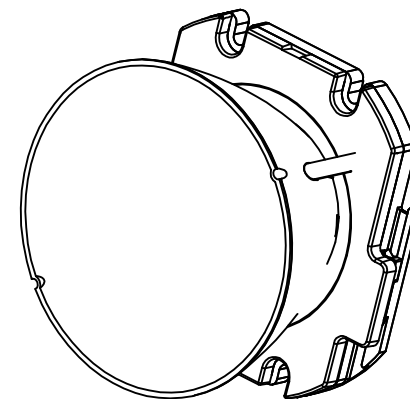
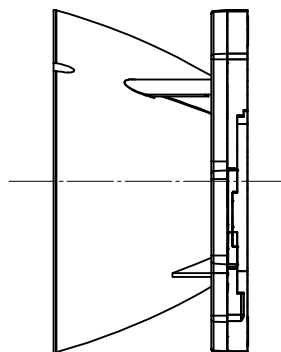
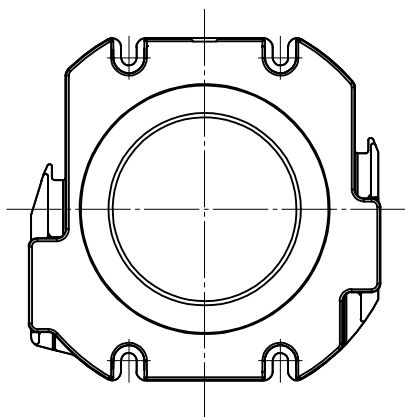
LED HOLDER PART NUMBER 180180-0000


LED HOLDER SHOWN WITH OPTIONAL CLEAR COVER LENS  
MOLEX INDIVIDUAL COVER LENS PART NUMBER 180182-0000  
HOLDER AND LENS ASSEMBLY PART NUMBER 180180-0001

ENTER DESCRIPTION EC NO: SSL2016-0054 DRAWN: ZABJANOVSKI 2016/03/29 CHKD: APPR: GMEYER 2016/04/11 REV		DESCRIPTION	QUALITY SYMBOLS  ▽=0 ▽=0 ▽=0	GENERAL TOLERANCES (UNLESS SPECIFIED)		DIMENSION STYLE MM ONLY		SCALE 1:1	DESIGN UNITS METRIC	 THIRD ANGLE PROJECTION					
					mm	INCH	DRAWN BY CCARRANZA	DATE 2010/10/26	TITLE  BRIDGELUX RS LED HOLDER						
				4 PLACES	± ---	± ---	CHECKED BY	DATE 2012/11/06							
				3 PLACES	± ---	± ---	CCARRANZA	DATE							
				2 PLACES	± 0.13	± ---	APPROVED BY	DATE							
				1 PLACE	± 0.25	± ---	DMCGOWAN	2010/12/23	 MOLEX INCORPORATED		SHEET NO. 3 OF 4				
				ANGULAR ±1/2°		MATERIAL NO.		DOCUMENT NO.							
				DRAFT WHERE APPLICABLE MUST REMAIN WITHIN DIMENSIONS		SEE CHART		SD-180180-000							
				C2	SIZE B		THIS DRAWING CONTAINS INFORMATION THAT IS PROPRIETARY TO MOLEX INCORPORATED AND SHOULD NOT BE USED WITHOUT WRITTEN PERMISSION								

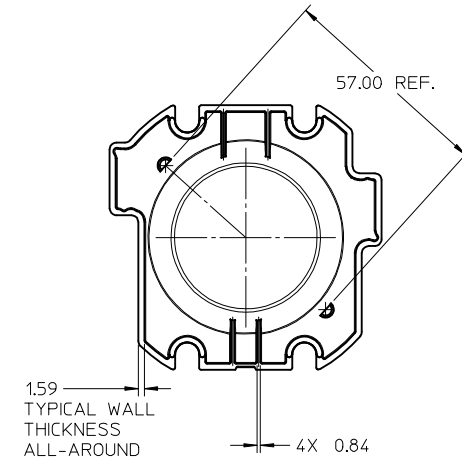
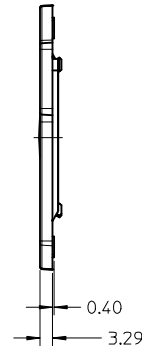
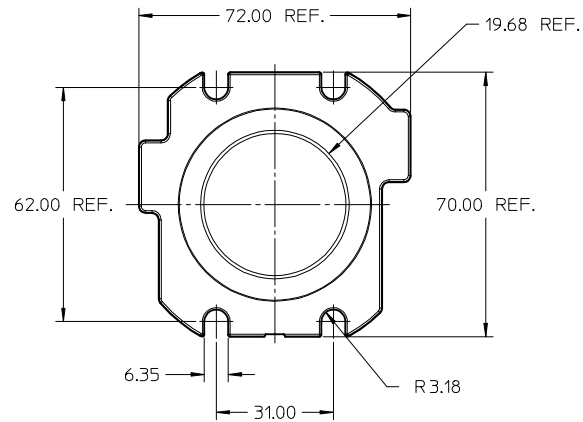
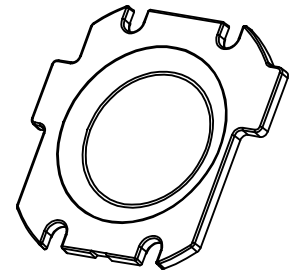
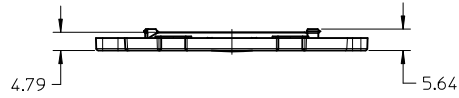
10 9 8 7 6 5 4 3 2 1

SHOWN WITH OPTIONAL REFLECTOR  
SOLD SEPARATELY BY LEDIL @ [www.ledil.com](http://www.ledil.com)



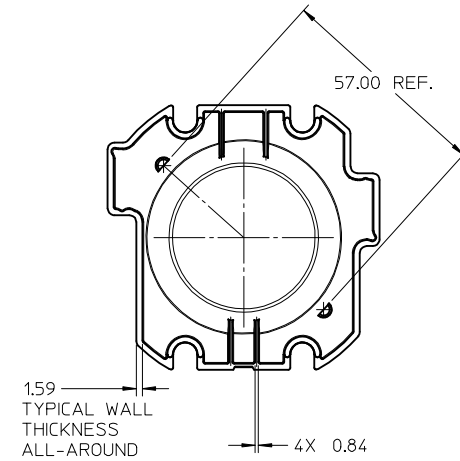
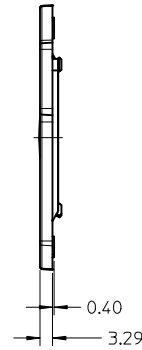
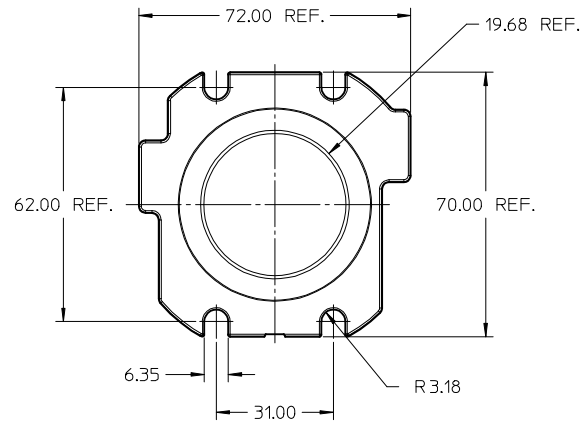
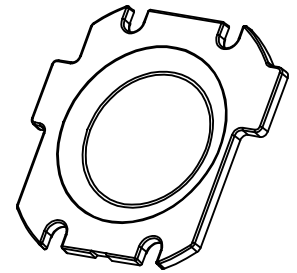
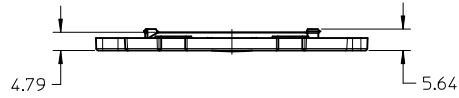
ENTER DESCRIPTION EC NO: SSL2016-0054 DRAWN: ZABJANOVSKI 2016/03/29 CHKD: APPR: GMEYER 2016/04/11 C2	DESCRIPTION REV	QUALITY SYMBOLS <div>▽F=0</div> <div>▽F=0</div> <div>▽F=0</div>	GENERAL TOLERANCES (UNLESS SPECIFIED)		DIMENSION STYLE MM ONLY		SCALE 1:1	DESIGN UNITS METRIC	 THIRD ANGLE PROJECTION
				mm	INCH	DRAWN BY CCARRANZA	DATE 2010/10/26	TITLE BRIDGELUX RS LED HOLDER	
			4 PLACES ± ---	± ---	CHECKED BY CCARRANZA	DATE 2012/11/06			
			3 PLACES ± ---	± ---	APPROVED BY DMCGOWAN	DATE 2010/12/23	molex MOLEX INCORPORATED		
			2 PLACES ± 0.13	± ---	MATERIAL NO.	DOCUMENT NO.		SHEET NO. 4 OF 4	
			1 PLACE ± 0.25	± ---	SEE CHART		SD-180180-000		
ANGULAR ±1/2°			DRAFT WHERE APPLICABLE MUST REMAIN WITHIN DIMENSIONS		SIZE B	THIS DRAWING CONTAINS INFORMATION THAT IS PROPRIETARY TO MOLEX INCORPORATED AND SHOULD NOT BE USED WITHOUT WRITTEN PERMISSION			





- NOTES:
1. MATERIAL: CLEAR POLYCARBONATE UL94HB.
  2. THIS PRODUCT IS ELV AND ROHS COMPLIANT.

INITIAL RELEASE EC NO: SSL2013-0009 2012/07/24 DRAWN:MDEVITO CHKD:CCARRANZA APPR:DMCGOWAN 2012/07/25		DESCRIPTION REV	QUALITY SYMBOLS <div>▽=0</div> <div>▽=0</div> <div>▽=0</div>	GENERAL TOLERANCES (UNLESS SPECIFIED)		DIMENSION STYLE		SCALE	DESIGN UNITS	THIRD ANGLE PROJECTION	
						MM ONLY		1:1	METRIC		
				4 PLACES ± --- ± ---		DRAWN BY	DATE	TITLE BRIDGELUX RS LED HOLDER LENS (SALES)			
				3 PLACES ± --- ± ---		CHECKED BY	DATE				
2 PLACES ± 0.13 ± ---		CCARRANZA		2012/07/24		molex					
1 PLACE ± 0.25 ± ---		APPROVED BY		DATE							
0 PLACE ± --- ± ---		DMCGOWAN		2012/07/25		1801820000					
ANGULAR ±1/2°		MATERIAL NO.		DOCUMENT NO.						SHEET NO.	
DRAFT WHERE APPLICABLE		1		SD-180182-0000		1 OF 1		THIS DRAWING CONTAINS INFORMATION THAT IS PROPRIETARY TO MOLEX INCORPORATED AND SHOULD NOT BE USED WITHOUT WRITTEN PERMISSION			
MUST REMAIN WITHIN DIMENSIONS		SIZE		C							



- NOTES:
1. MATERIAL: CLEAR POLYCARBONATE UL94HB.
  2. THIS PRODUCT IS ELV AND ROHS COMPLIANT.

INITIAL RELEASE EC NO: SSL2013-0009 DRAWN:MDEVITO 2012/07/24 CHKD:CCARRANZA 2012/07/24 APPR:DMCGOWAN 2012/07/25	REV 1	DESCRIPTION	QUALITY SYMBOLS ▽=0 ▽=0 ▽=0	GENERAL TOLERANCES (UNLESS SPECIFIED)		DIMENSION STYLE		SCALE 1:1	DESIGN UNITS METRIC	THIRD ANGLE PROJECTION	TITLE BRIDGELUX RS LED HOLDER LENS (SALES)  <b>molex</b>	
						MM ONLY						
				4 PLACES	± ---	± ---	DRAWN BY	DATE	DOCUMENT NO. SD-180182-0000	SHEET NO. 1 OF 1		
				3 PLACES	± ---	± ---	CHECKED BY	DATE				
				2 PLACES	± 0.13	± ---	CCARRANZA	2012/07/24				
				1 PLACE	± 0.25	± ---	APPROVED BY	DATE				
				0 PLACE	± ---	± ---	DMCGOWAN	2012/07/25				
				ANGULAR ±1/2°		MATERIAL NO.						
				DRAFT WHERE APPLICABLE MUST REMAIN WITHIN DIMENSIONS				1801820000				
				SIZE				THIS DRAWING CONTAINS INFORMATION THAT IS PROPRIETARY TO MOLEX INCORPORATED AND SHOULD NOT BE USED WITHOUT WRITTEN PERMISSION				
				C								

# Mouser Electronics

Authorized Distributor

Click to View Pricing, Inventory, Delivery & Lifecycle Information:

Molex:

[180182-0000](#) [180180-0001](#)