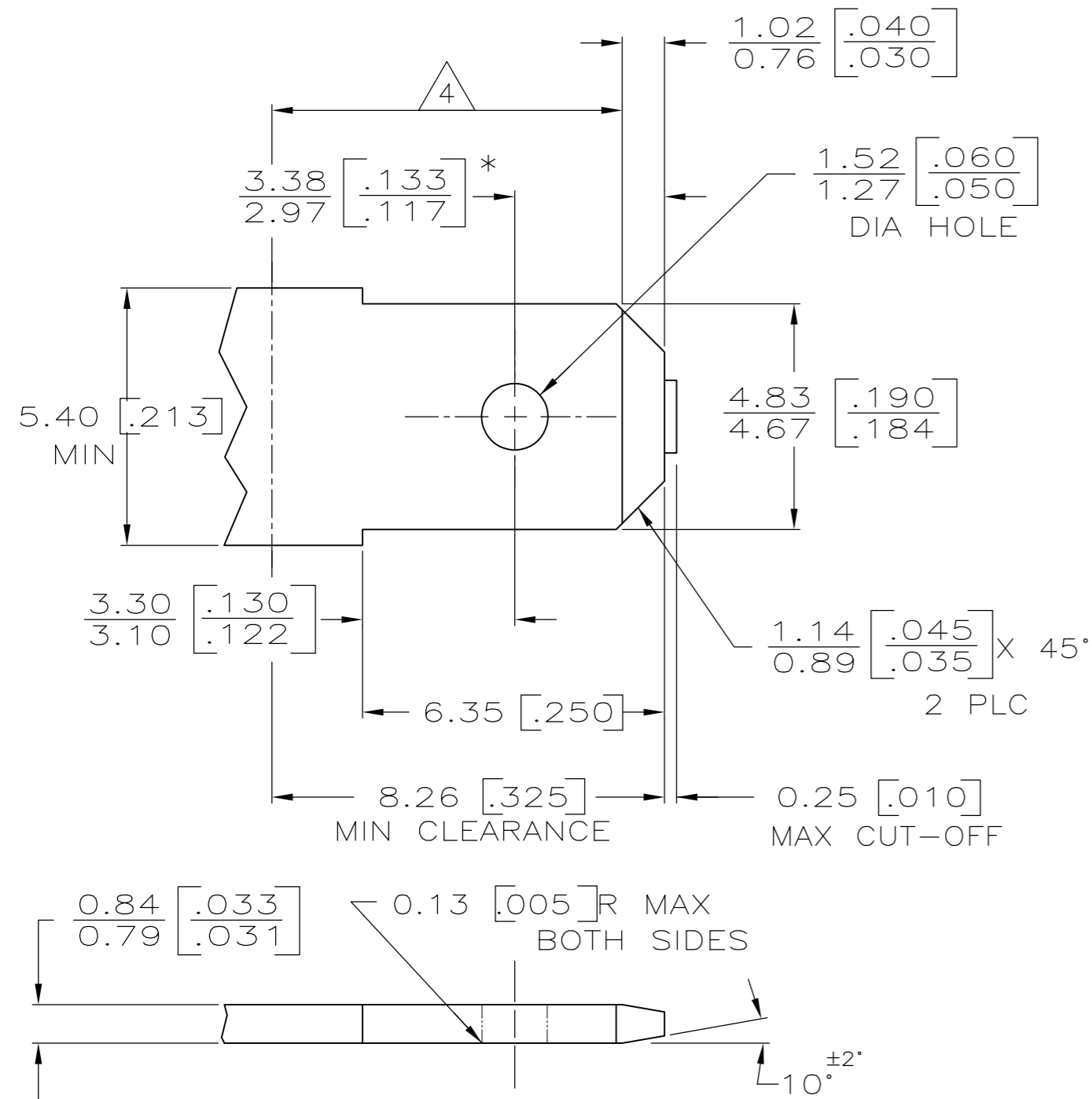


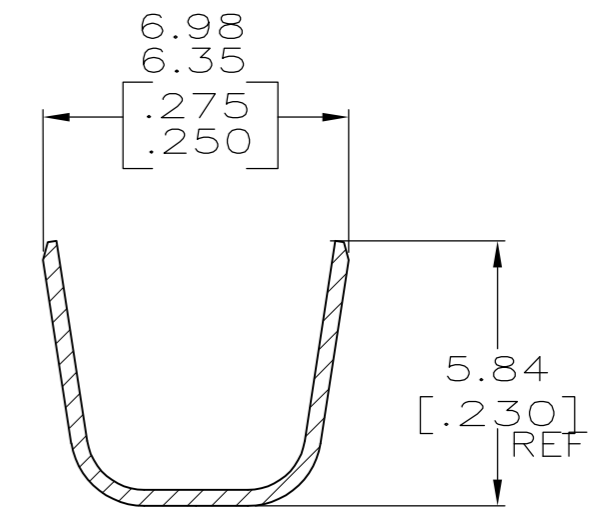
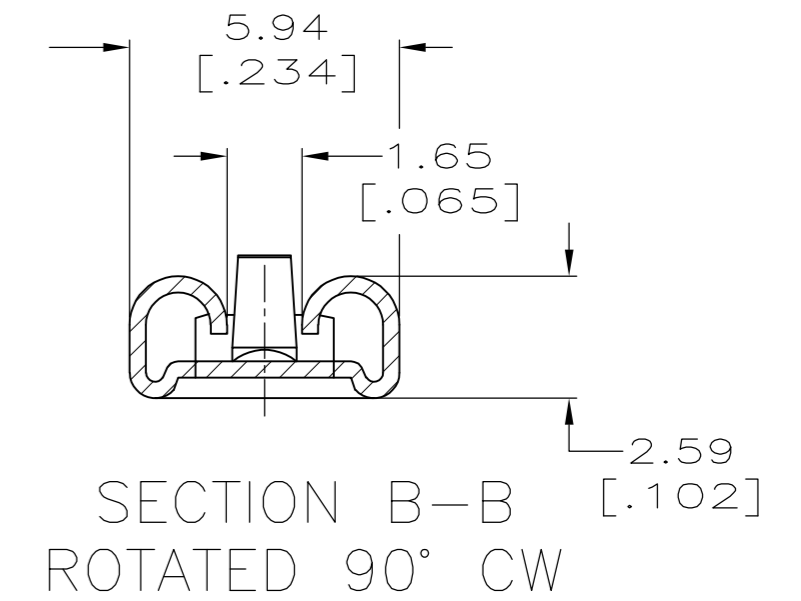
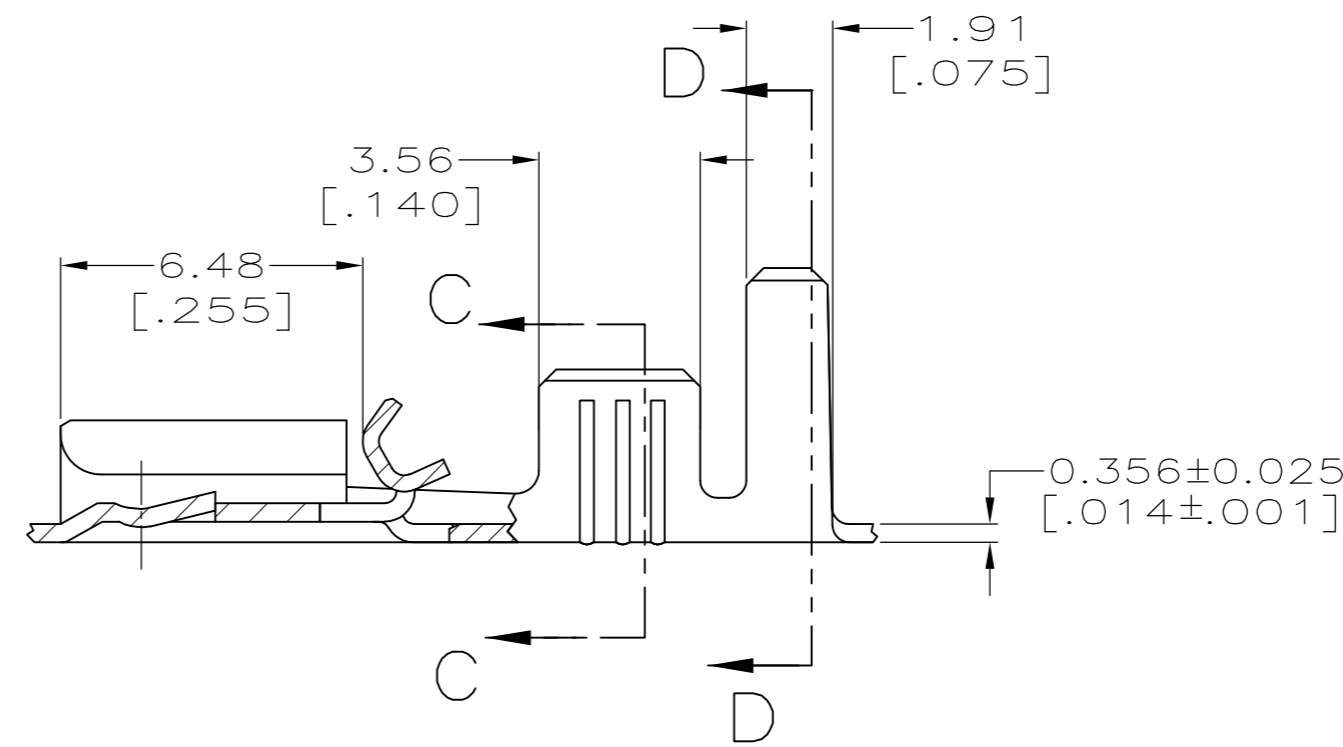
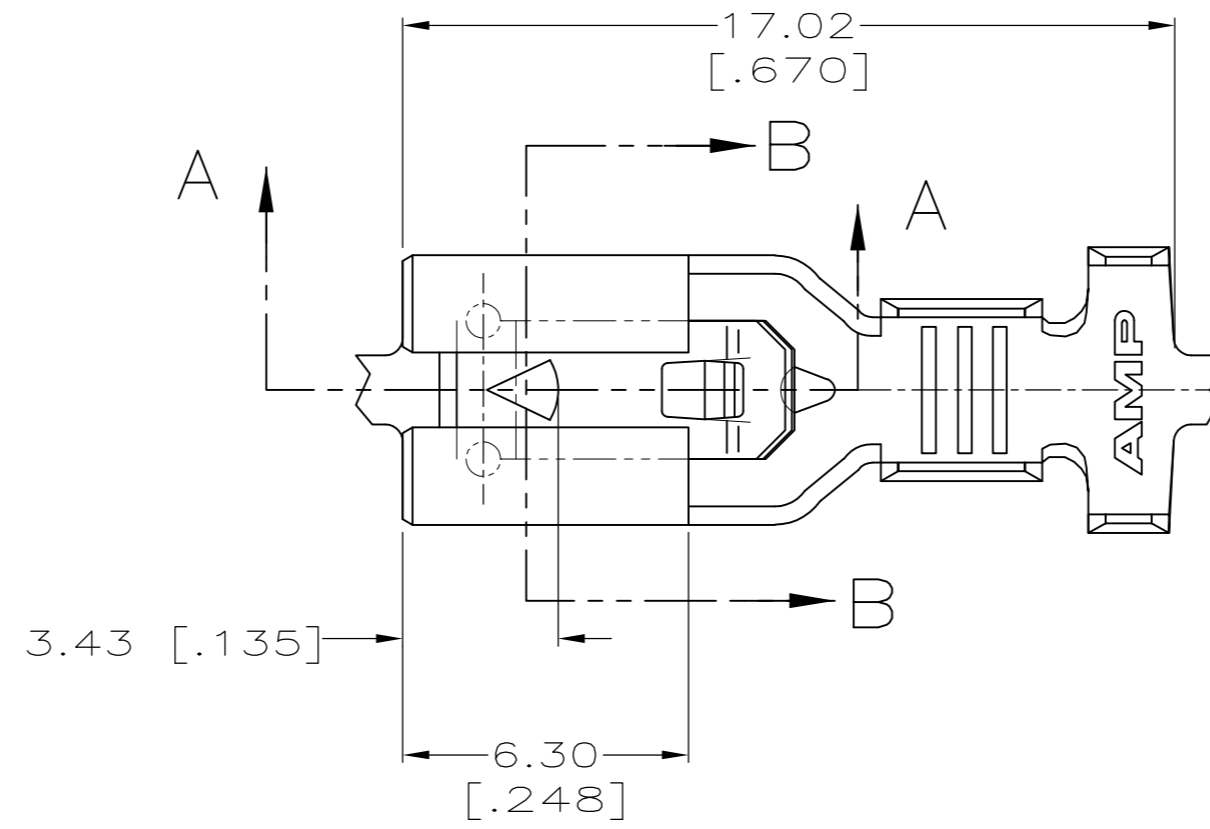
THIS DRAWING IS UNPUBLISHED. RELEASED FOR PUBLICATION
 © COPYRIGHT - By - ALL RIGHTS RESERVED.

LOC		DIST		REVISIONS			
P	LTR	DESCRIPTION		DATE	DWN	APVD	
AF	50	D		REVISED PER ECR-13-011489	14DEC2013	KH	PD

SUGGESTED MATING TAB



- MATL: #2 HARD BRASS OR NICKEL PLATE STEEL.
 - NO BURRS PERMISSIBLE AT HOLE.
 - TIN PLATING IS REQUIRED ON BRASS WHEN TERMINAL TEMPERATURE IS OVER 225° F.
 - MUST BE FLAT WITHIN 0.076[.003] OVER THIS LENGTH.
 - HOLE MUST BE SYMMETRICAL ABOUT TAB & WITHIN 0.076[.003].
- * TO BE USED ONLY WHEN SHOULDER IS ELIMINATED.



- CONTINUOUS STRIP ON REELS.
- ACCEPTS [#18-#14] SINGLE WIRE SIZES AND COMBINATION OF TWO [#18'S] WIRE CRIMP IS 3.05 [.120], F TYPE.
- FITS INSULATION RANGE OF 3.81-5.08 [.150-.200] DIA OR TWO WIRES AT 2.79 [.110] MAX DIA. INSULATION CRIMP IS 5.59 [.220], F TYPE

THIS DRAWING IS A CONTROLLED DOCUMENT.		DWN	JR RUTH	6/26/98
DIMENSIONS: mm [INCHES]		CHK	MS FEHER	6/26/98
TOLERANCES UNLESS OTHERWISE SPECIFIED:		APVD	E HOWARD	6/26/98
0 PLC	± -	PRODUCT SPEC		
1 PLC	± -	APPLICATION SPEC		
2 PLC	± 0.25 [.010]			
3 PLC	± -			
4 PLC	± -			
ANGLES	± -			
MATERIAL	FINISH	WEIGHT		
BRASS	SEE TABLE	-		
		CUSTOMER DRAWING		

0.002032 [.000080] MIN TIN	1217096-2		
-	1217096-1		
FINISH	PART NO.		
TE TE Connectivity			
RECEPTACLE, POSITIVE-LOCK, MARK III, 4.75 [.187] SERIES			
SIZE	CAGE CODE	DRAWING NO	RESTRICTED TO
A2	00779	C=1217096	-
SCALE 6:1		SHEET 1 OF 1	REV D

1217096

A

Mouser Electronics

Authorized Distributor

Click to View Pricing, Inventory, Delivery & Lifecycle Information:

[TE Connectivity:](#)

[1217096-1](#)