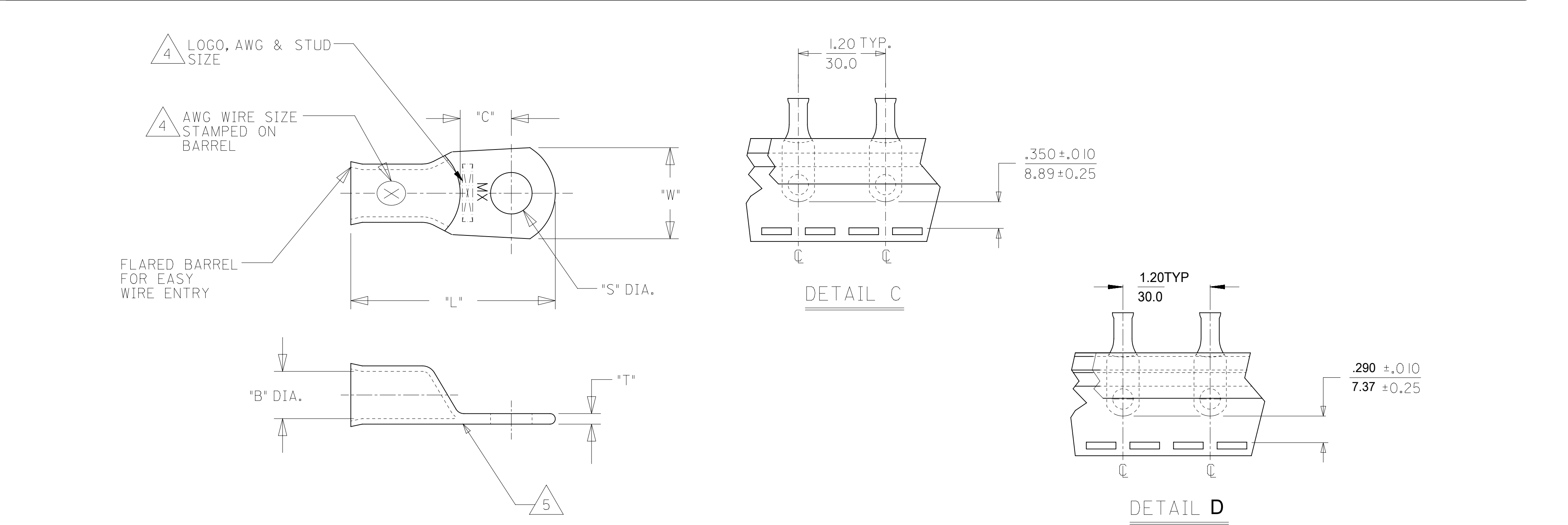


12	11	10	9	8	7	6	5	4	3	2	1					
UNPLATED MATERIAL NUMBER	UNPLATED ENG. NUMBER	UNPLATED MAT. NO. ON TAPE	UNPLATED ENG. NO. ON TAPE	PLATED MATERIAL NUMBER	PLATED ENGINEERING NUMBER	PLATED MAT. NO. ON TAPE	PLATED ENG. NO ON TAPE	SEE DETAIL	STUD SIZE	WIRE RANGE	"S"	"L"	"W"	"C"	"B"	"T"
											±.015/0.38	±.050/1.27	±.035/0.89	±.050/1.27	±.020/0.51	±.030/0.76
1922 I045 I	BCL-4 I0	---	---	1922 I0452	BCL-4 I0-PL	---	---	---	10/4.8mm	4 AWG/25mm ²	.214/5.45	1.500/38.10	.531/13.49	.429/10.90	.286/7.26	.080/2.03
1922 I0404	BCL-4 I4	---	---	1922 I0230	BCL-4 I4-PL	---	---	---	1/4"/M6	4 AWG/25mm ²	.278/7.06	1.500/38.10	.531/13.49	.429/10.90	.286/7.26	.080/2.03
1922 I0405	BCL-45 I6	---	---	1922 I023 I	BCL-45 I6-PL	190820025	BCL-45 I6-PLT	D	5/16"/M8	4 AWG/25mm ²	.340/8.64	1.500/38.10	.531/13.49	.429/10.90	.286/7.26	.080/2.03
1922 I046 I	BCL-45 I6-WP	---	---	1922 I0460	BCL-45 I6-WP-PL	---	---	---	5/16"/M8	4 AWG/25mm ²	.340/8.64	1.531/38.89	.625/15.88	.397/10.08	.286/7.26	.080/2.03
1922 I0383	BCL-438	---	---	1922 I0232	BCL-438-PL	190820026	BCL-438-PLT	D	3/8"/M9	4 AWG/25mm ²	.400/10.16	1.500/38.10	.531/13.49	.429/10.90	.286/7.26	.080/2.03
1922 I0458	BCL-438-WP	---	---	1922 I0456	BCL-438-WP-PL	190820027	BCL-438-WP-PLT	D	3/8"/M9	4 AWG/25mm ²	.400/10.16	1.531/38.89	.625/15.88	.397/10.08	.286/7.26	.080/2.03
1922 I0459	BCL-438-XWP	---	---	1922 I0457	BCL-438-XWP-PL	---	---	---	3/8"/M9	4 AWG/25mm ²	.400/10.16	1.688/42.88	.766/19.46	.444/11.28	.286/7.26	.100/2.54
1922 I0453	BCL-4 I2-XWP	C3	---	1922 I0454	BCL-4 I2-XWP-PL	C3	---	---	1/2"/M12	4 AWG/25mm ²	.520/13.21	1.688/42.88	.766/19.46	.444/11.28	.286/7.26	.100/2.54
1922 I04 I9	BCL-2 I4	---	---	1922 I04 I8	BCL-2 I4-PL	I9082000 I	BCL-2 I4-PLT	C	1/4"/M6	2 AWG/35mm ²	.278/7.06	1.625/41.28	.625/15.88	.437/11.10	.336/8.53	.095/2.41
1922 I0400	BCL-25 I6	---	---	1922 I0233	BCL-25 I6-PL	I90820002	BCL-25 I6-PLT	C	5/16"/M8	2 AWG/35mm ²	.340/8.64	1.625/41.28	.625/15.88	.437/11.10	.336/8.53	.095/2.41
1922 I0380	BCL-238	---	---	1922 I0235	BCL-238-PL	---	---	---	3/8"/M9	2 AWG/35mm ²	.400/10.16	1.625/41.28	.625/15.88	.437/11.10	.336/8.53	.095/2.41
1922 I0564	BCL-238-WP	---	---	1922 I0565	BCL-238-WP-PL	---	---	---	3/8"/M9	2 AWG/35mm ²	.400/10.16	1.750/44.45	.750/19.05	.474/12.04	.336/8.53	.095/2.41
1922 I0399	BCL-2 I2-WP	---	---	1922 I0236	BCL-2 I2-WP-PL	---	---	---	1/2"/M12	2 AWG/35mm ²	.520/13.21	1.750/44.45	.750/19.05	.474/12.04	.336/8.53	.095/2.41
1922 I0594	BCL- I I0	---	---	1922 I0595	BCL- I I0-PL	---	---	---	10/4.8mm	1 AWG/50mm ²	.214/5.45	1.718/43.64	.656/16.66	.446/11.33	.360/9.14	.100/2.54
1922 I042 I	BCL- I I4	---	---	1922 I0420	BCL- I I4-PL	---	---	---	1/4"/M6	1 AWG/50mm ²	.278/7.06	1.718/43.64	.656/16.66	.446/11.33	.360/9.14	.100/2.54
1922 I0396	BCL- I5 I6	---	---	1922 I0237	BCL- I5 I6-PL	---	---	---	5/16"/M8	1 AWG/50mm ²	.340/8.64	1.718/43.64	.656/16.66	.446/11.33	.360/9.14	.100/2.54
1922 I0378	BCL- I38	---	---	1922 I0238	BCL- I38-PL	---	---	---	3/8"/M9	1 AWG/50mm ²	.400/10.16	1.718/43.64	.656/16.66	.446/11.33	.360/9.14	.100/2.54
1922 I0580	BCL- I38-WP	---	---	1922 I058 I	BCL- I38-WP-PL	---	---	---	3/8"/M9	1 AWG/50mm ²	.400/10.16	1.844/46.84	.750/19.05	.474/12.04	.360/9.14	.100/2.54
1922 I0395	BCL- I I2	---	---	1922 I0239	BCL- I I2-PL	---	---	---	1/2"/M12	1 AWG/50mm ²	.520/13.21	1.844/46.84	.750/19.05	.474/12.04	.360/9.14	.100/2.54



NOTES:
1. FOR INSPECTION SIGHT HOLE, PLEASE CONSULT FACTORY.
2. OTHER STUD SIZES MAY BE AVAILABLE, PLEASE CONSULT FACTORY.
3. MATERIAL: COPPER
PLATING: TIN
4. MARKINGS CAN BE AT EITHER LOCATION SHOWN.
5. IF TONGUE IS TO BE BENT AT ANY ANGLE, IT MUST BE BENT AROUND A RADIUS ONE HALF THE TONGUE THICKNESS.
6. ALL PARTS ARE ROHS COMPLIANT.

THIS DRAWING CONTAINS INFORMATION THAT IS PROPRIETARY TO MOLEX ELECTRONIC TECHNOLOGIES, LLC AND SHOULD NOT BE USED WITHOUT WRITTEN PERMISSION												
DIMENSION UNITS IN/MM		SCALE NTS		CURRENT REV DESC: UPDATED ENG NUMBERS		molex						
GENERAL TOLERANCES (UNLESS SPECIFIED)												
	MM	INCH	EC NO: 620903			EYELET STYLE COPPER TERMINALS 4, 2, & 1 AWG LUGS						
4 PLACES	±	±	DRWN: GROJAS01 2018/06/11									
3 PLACES	±	±	CHK'D: GROJAS01 2019/07/19			PRODUCT CUSTOMER DRAWING						
2 PLACES	±	±	APPR: NKENSINGER 2019/07/19									
1 PLACE	±	±	INITIAL REVISION:			DOCUMENT NUMBER SD-19221-010						
0 PLACES	±	±	DRWN: BE 2002/06/26							DOC TYPE PSD		DOC PART 001
ANGULAR TOL ± °			APPR: RD 2002/06/26		SERIES 19221		SHEET NUMBER C3					
DRAFT WHERE APPLICABLE MUST REMAIN WITHIN DIMENSIONS			THIRD ANGLE PROJECTION		DRAWING C-SIZE		MATERIAL NUMBER SEE CHART		CUSTOMER GENERAL MARKET		SHEET NUMBER 1 OF 1	

DOCUMENT STATUS	P1	RELEASE DATE	2019/07/19	19:21:58
-----------------	----	--------------	------------	----------

12

11

10

9

8

7

6

5

4

3

2

1

Mouser Electronics

Authorized Distributor

Click to View Pricing, Inventory, Delivery & Lifecycle Information:

Molex:

19221-0758