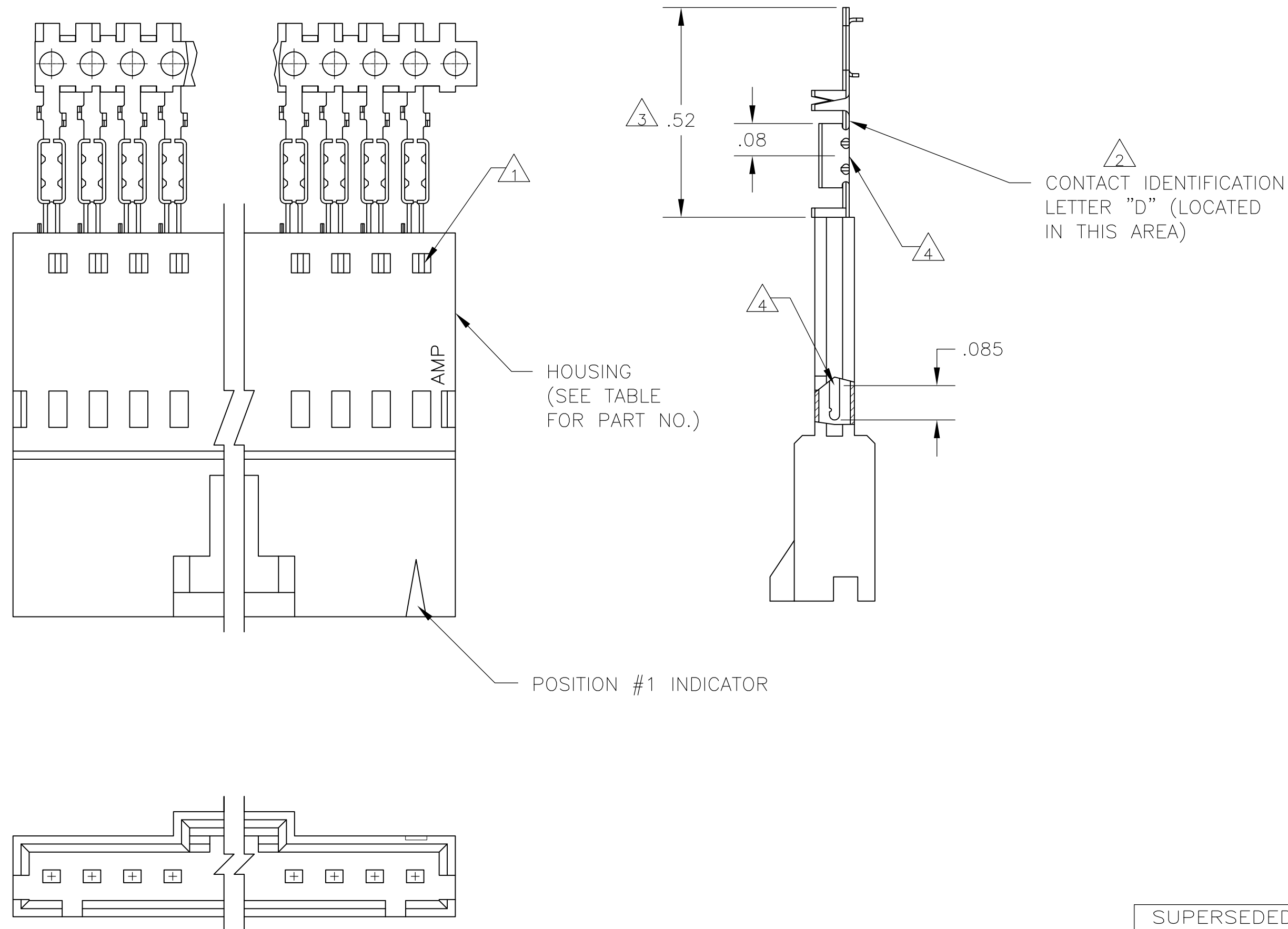



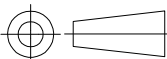

LOC	DIST	REVISIONS					
AD	00	P	LTR	DESCRIPTION	DATE	DWN	APVD
			P	EC 0G3C 0766 04	27DEC04	BSV	JLG
			P1	REVISED PER ECO-09-020932	26AUG09	KK	AEG



- 1 CONTACTS ARE LATCHED INTO THE PRELOAD WINDOWS
- 2 USE WITH #22-#26 AWG WIRE SIZE, .054/.030 INSULATION DIAMETER, .015 MAXIMUM INSULATION THICKNESS
- 3 THE DIMENSION APPLIES WITH THE FORWARD PRELOAD STOP IN CONTACT WITH THE HOUSING SURFACE
- 4 POINT OF MEASUREMENT FOR PLATING THICKNESS
- 5 FOR STRIP ASSEMBLIES SEE PART NUMBER 103945
- 6 MATERIAL- HOUSING: FLAME RETARDANT THERMOPLASTIC, COLOR: BLACK PINS: PHOS. BRONZE
- 7 FINISH- PINS: .000015 GOLD IN THE CONTACT AREA, .000050-.000100 BRIGHT TIN-LEAD ON THE TERMINATION AREA, OVER .000050 NICKEL.
- 8 FINISH- PINS: .000015 GOLD IN THE CONTACT AREA, .000050-.000100 MATTE TIN ON THE TERMINATION AREA, OVER .000050 NICKEL.
- 9 OBSOLETE PARTS: OBSOLETE CIS STREAMLINING PER D.RENAUD/D.SINISI

<div>9</div> <div>OBSOLETE</div>	<div>8</div>	2-103653-4	25	7-103660-4
	<div>8</div>	2-103653-3	24	7-103660-3
	<div>8</div>	2-103653-2	23	7-103660-2
	<div>8</div>	2-103653-1	22	7-103660-1
	<div>8</div>	2-103653-0	21	7-103660-0
<div>9</div> <div>OBSOLETE</div>	<div>8</div>	1-103653-9	20	6-103660-9
	<div>8</div>	1-103653-8	19	6-103660-8
	<div>8</div>	1-103653-7	18	6-103660-7
	<div>8</div>	1-103653-6	17	6-103660-6
<div>9</div> <div>OBSOLETE</div>	<div>8</div>	1-103653-5	16	6-103660-5
<div>9</div> <div>OBSOLETE</div>	<div>8</div>	1-103653-4	15	6-103660-4
	<div>8</div>	1-103653-3	14	6-103660-3
<div>9</div> <div>OBSOLETE</div>	<div>8</div>	1-103653-2	13	6-103660-2
	<div>7</div>	2-103653-4	25	2-103660-4
<div>9</div> <div>OBSOLETE</div>	<div>7</div>	2-103653-3	24	2-103660-3
	<div>7</div>	2-103653-2	23	2-103660-2
	<div>7</div>	2-103653-1	22	2-103660-1
	<div>7</div>	2-103653-0	21	2-103660-0
<div>9</div> <div>OBSOLETE</div>	<div>7</div>	1-103653-9	20	1-103660-9
	<div>7</div>	1-103653-8	19	1-103660-8
	<div>7</div>	1-103653-7	18	1-103660-7
	<div>7</div>	1-103653-6	17	1-103660-6
<div>9</div> <div>SUPERSEDED</div>	<div>7</div>	1-103653-5	16	1-103660-5
<div>9</div> <div>SUPERSEDED</div>	<div>7</div>	1-103653-4	15	1-103660-4
	<div>7</div>	1-103653-3	14	1-103660-3
	<div>7</div>	1-103653-2	13	1-103660-2
BY 1-103945-1		1-103653-1	12	1-103660-1
BY 1-103945-0		1-103653-0	11	1-103660-0

SUPERSEDED BY 1-103945-1		1-103653-1	12	1-103660-1
SUPERSEDED BY 1-103945-0		1-103653-0	11	1-103660-0
SUPERSEDED BY 103945-9		103653-9	10	103660-9
SUPERSEDED BY 103945-8		103653-8	9	103660-8
SUPERSEDED BY 103945-7		103653-7	8	103660-7
SUPERSEDED BY 103945-6		103653-6	7	103660-6
SUPERSEDED BY 103945-5		103653-5	6	103660-5
SUPERSEDED BY 103945-4		103653-4	5	103660-4
SUPERSEDED BY 103945-3		103653-3	4	103660-3
SUPERSEDED BY 103945-2		103653-2	3	103660-2
SUPERSEDED BY 103945-1		103653-1	2	103660-1

		PLATING		HOUSING PART NUMBER		NO OF POSN		ASSEMBLY PART NUMBER			
THIS DRAWING IS A CONTROLLED DOCUMENT.		DWN R.BROWN		26JUL00		<div> Tyco Electronics Corporation Harrisburg, Pa 17105-3608</div>					
		CHK K.WRIGHT		26JUL00							
		APVD K.WRIGHT		26JUL00							
DIMENSIONS: INCHES		TOLERANCES UNLESS OTHERWISE SPECIFIED:		NAME		SHROUDED PIN ASSY, AMPMODU MTE, SINGLE ROW, .100 CL, POLARIZED, WITH LATCH WINDOWS, FOR #22-#26 AWG WIRE SIZE					
		0 PLC ± - 1 PLC ± - 2 PLC ± - 3 PLC ± - 4 PLC ± - ANGLES ± - FINISH		PRODUCT SPEC 108-25034 APPLICATION SPEC 114-25026							
MATERIAL		SEE TABLE		SIZE A2						CAGE CODE 00779	
				WEIGHT -						SCALE 4:1 SHEET 1 OF 1 REV P1	
				CUSTOMER DRAWING							

# Mouser Electronics

Authorized Distributor

Click to View Pricing, Inventory, Delivery & Lifecycle Information:

[TE Connectivity:](#)

[1-103660-3](#)