

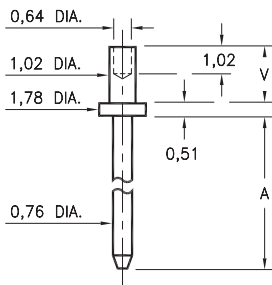
MALE PCB PINS

PRINTED CIRCUIT PINS

3110/3111

311X-X-00-XX-00-00-08-0

Swage mount in 1,09 hole

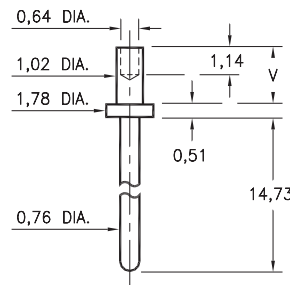


| Basic Part Number | Board Thickness | Length A | Length V |
|-------------------|-----------------|----------|----------|
| 3110-1 | 0,79 | 3,81 | 1,30 |
| 3110-2 | 1,57 | 3,81 | 2,08 |
| 3110-3 | 2,39 | 3,81 | 2,87 |
| 3111-1 | 0,79 | 7,62 | 1,30 |
| 3111-2 | 1,57 | 7,62 | 2,08 |
| 3111-3 | 2,39 | 7,62 | 2,87 |

3150

3150-X-00-XX-00-00-08-0

Swage mount in 1,09 mounting hole

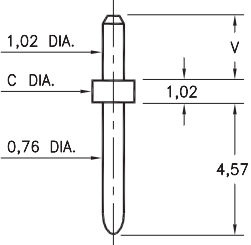


| Basic Part Number | Board Thickness | Length V |
|-------------------|-----------------|----------|
| 3150-1 | 0,79 | 1,30 |
| 3150-2 | 1,57 | 2,08 |

3136/3137

313X-X-00-XX-00-00-08-0

Solder mount in 1,09 mounting hole
3137-1 is available on 16mm wide carrier tape: 580 parts per 330mm reel.
See page 224.1 for Tape & Reel details

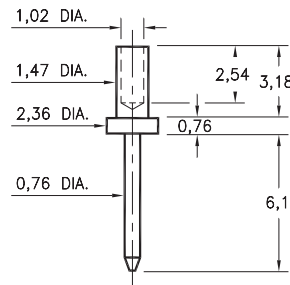


| Basic Part Number | Board Thickness | Length V | Flange Dia. C |
|-------------------|-----------------|----------|---------------|
| 3136-1 | 1,57 | 2,08 | |
| 3136-2 | 2,39 | 2,79 | 1,98 |
| 3136-3 | 3,18 | 3,68 | |
| 3137-1 | 1,57 | 2,08 | 1,57 |
| 3137-2 | 2,39 | 2,79 | |
| 3137-3 | 3,18 | 3,68 | |
| 3137-4 | 3,96 | 4,70 | |

3148

3148-3-00-XX-00-00-08-0

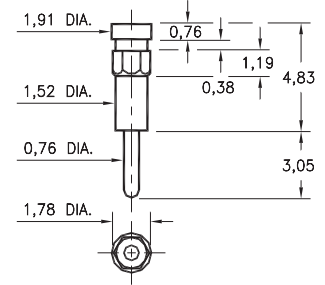
Swage mount in 1,57 hole
For a 2,39 thick board



8815

8815-0-00-XX-00-00-03-0

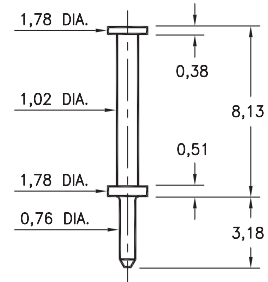
Hex press-fit in 1,68 plated through-hole



6821

6821-0-00-XX-00-00-08-0

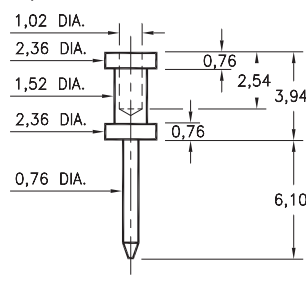
Turret terminal pin



3132

3132-0-00-XX-00-00-08-0

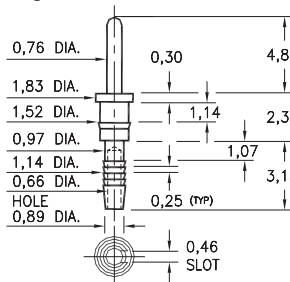
Wire crimp termination, Annealed
Accepts wire sizes 22 AWG Max. / 24 AWG Min.



5601

5601-0-01-XX-00-00-03-0

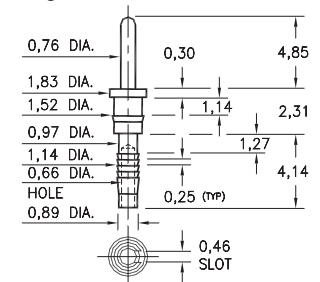
Compliant press-fit in 1,02 ± 0,08 plated through-hole. For 1,52 → 2,54 thick board



5602

5602-0-01-XX-00-00-03-0

Compliant press-fit in 1,02 ± 0,08 plated through-hole. For 2,29 → 3,30 thick board



SPECIFICATIONS:

Pin Material: Brass Alloy 360, 1/2 Hard
(Except swage pins which are annealed)

Dimensions: Millimeters

Tolerances On: Lengths: ± 0,13
Diameters: ± 0,051
Angles: ± 2°



ORDER CODE: XXXX - X - 0X - XX - 00 - 00 - XX - 0

BASIC PART #

SPECIFY PIN FINISH:

- 01 5,08µm TIN/LEAD OVER NICKEL
- ◆ 80 5,08µm TIN OVER NICKEL (RoHS)
- ◆ 15 0,25µm GOLD OVER NICKEL (RoHS)
- ◆ 21 0,51µm GOLD OVER NICKEL (RoHS)
- ◆ 34 1,27µm GOLD OVER NICKEL (RoHS)



Mouser Electronics

Authorized Distributor

Click to View Pricing, Inventory, Delivery & Lifecycle Information:

[Mill-Max:](#)

[3111-2-00-21-00-00-08-0](#) [3111-1-00-80-00-00-08-0](#) [3110-1-00-15-00-00-08-0](#) [3111-3-00-15-00-00-08-0](#) [3136-3-00-15-00-00-08-0](#) [3137-1-00-34-00-00-08-0](#) [3137-2-00-21-00-00-08-0](#) [3150-2-00-15-00-00-08-0](#) [3111-1-00-00-00-00-08-0](#)