

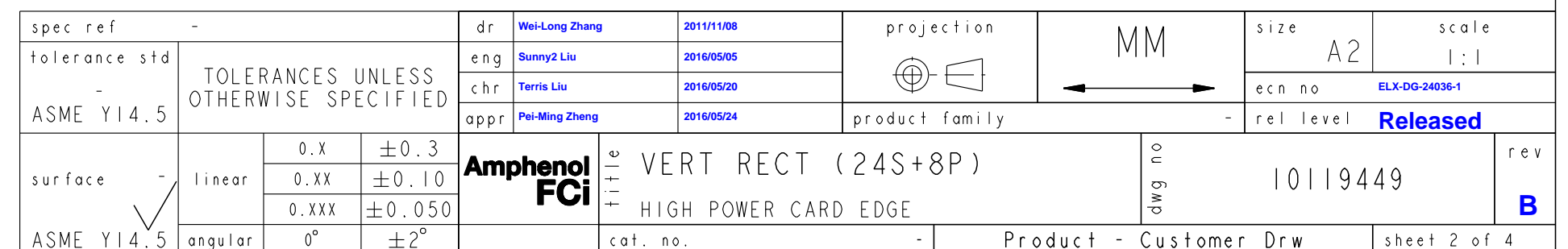
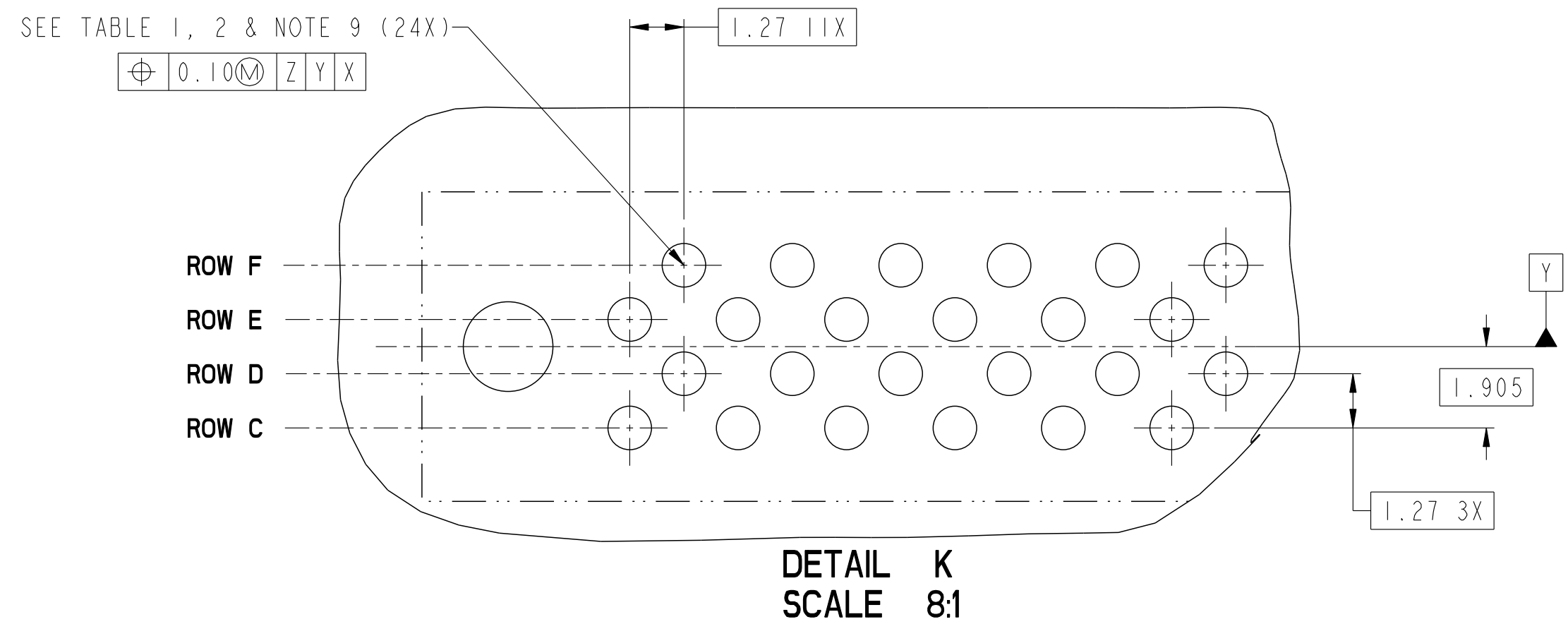


SECTION C-C

spec ref		-		dr		Wei-Long Zhang		2011/11/08		projection		MM		size		A2		scale		4:1	
tolerance std		-		eng		Sunny2 Liu		2016/05/05						ecn no		ELX-DG-24036-1		rel level		Released	
ASME Y14.5		TOLERANCES UNLESS OTHERWISE SPECIFIED		chr		Terris Liu		2016/05/20													
				appr		Pei-Ming Zheng		2016/05/24													
										product family		HPCE									
surface		-		linear		0.X		±0.3		Amphenol FCI		title		VERT RECT (24S+8P)		dwg no		10119449		rev	
				0.XX		±0.10															
				0.XXX		±0.050															
ASME Y14.5				angular		0°		±2°				cat. no.		-		Product - Customer Drw		sheet 1 of 4			

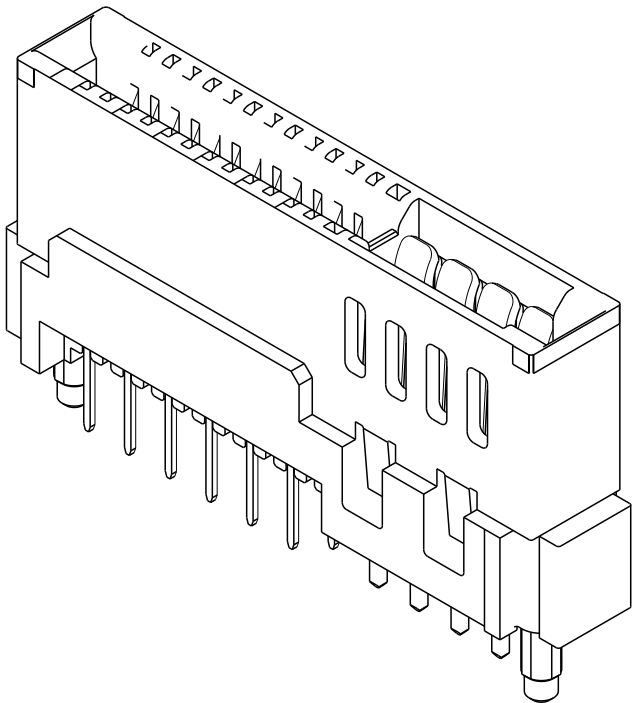
Amphenol FCI

© 2016 APCI








HPCE PART NUMBER (TABLE 3)					
PART NUMBER	TAIL TYPE	ORIENTATION KEY	DIM "A" TYPICAL TAIL LENGTH	DIM "B" RECOMMENDED BOARD THICKNESS	SPECIFIED APPLICATION TOOL
10119449-001LF	SOLDER	YES	3.17 ±0.25	1.59 - 2.38	NO
10119449-002LF	SOLDER	NO			
10119449-003LF	PRESS-FIT	YES	3.17 ±0.25	1.57 MIN.	YES NOTE 11
10119449-004LF	PRESS-FIT	NO			



NOTES:

1. CONNECTOR MATERIALS:
- HOUSING: HIGH TEMPERATURE THERMAL PLASTIC, BLACK  
UL 94V-0 COMPLIANT  
CONTACTS: HIGH PERFORMANCE COPPER ALLOY.
2. CONTACT FINISH REF. GS-12-604 SECTION 5.2.
3. PRODUCT SPECIFICATION: GS-12-604.
4. APPLICATION SPECIFICATION: GS-20-128.
5. PRODUCT MARKING ON HOUSING IN AREA SHOWN MEETS AFCI SPECIFICATION: GS-24-007.
6. PACKAGING MEETS FCI SPECIFICATION GS-14-937.
7. HOUSING COMPONENT WILL WITHSTAND EXPOSURE TO 260°C PEAK TEMPERATURE FOR 60 SECONDS IN A CONVECTION, INFRA-RED, OR VAPOR PHASE REFLOW OVEN.
8. COPPER PLATING THICKNESS IN CENTER OF VIA-HOLE CAN BE NO MORE THAN 0.003 LESS THAN OTHER AREAS.
9. ALL HOLE SIZES ARE FINISHED HOLE SIZES.
10. MOUNTING HOLES ARE UNPLATED  
Ø 2.40 +/- 0.1 FOR PRESS-FIT TAILS  
Ø 2.18 +/- 0.03 FOR SOLDER TAILS
11. APPLICATION TOOL DRAWING: 10119453.
12. A SYMBOL  WILL BE NEXT TO ANY DIMENSION, VIEW, OR NOTE WHICH HAS BEEN MODIFIED WITH THE CURRENT DRAWING REVISION.

spec ref -				dr Wei-Long Zhang		2011/11/08		projection		MM		size A2		scale 4:1	
tolerance std -				eng Sunny2 Liu		2016/05/05						ecn no ELX-DG-24036-1			
ASME Y14.5				chr Terris Liu		2016/05/20									
				appr Pei-Ming Zheng		2016/05/24									
								product family				HPCE			
												rel level Released			
surface -		linear		0.X ±0.3 0.XX ±0.10 0.XXX ±0.050		Amphenol FCI		title VERT RECT (24S+8P) HIGH POWER CARD EDGE		dwg no 10119449		rev B			
ASME Y14.5		angular 0° ±2°						cat. no. -		Product - Customer Drw				sheet 4 of 4	

# Mouser Electronics

Authorized Distributor

Click to View Pricing, Inventory, Delivery & Lifecycle Information:

[FCI / Amphenol:](#)

[10119449-004LF](#)