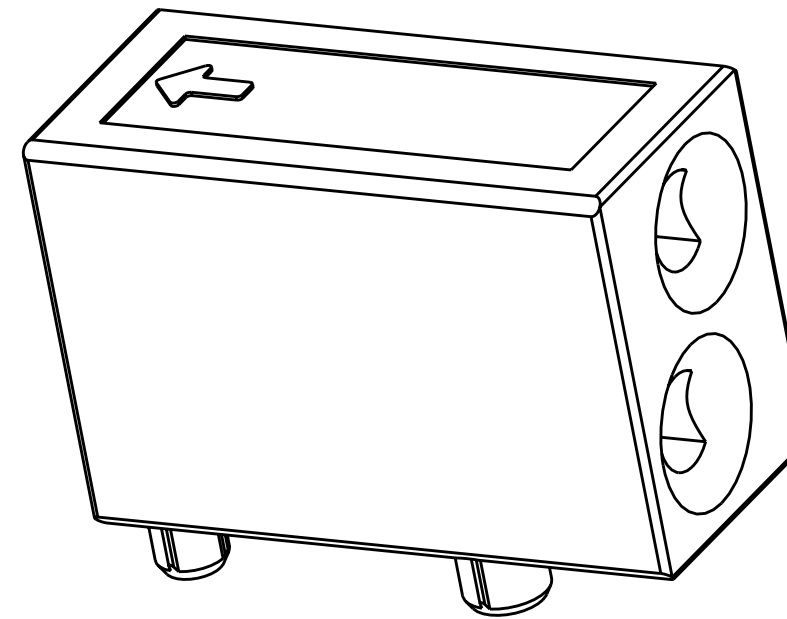
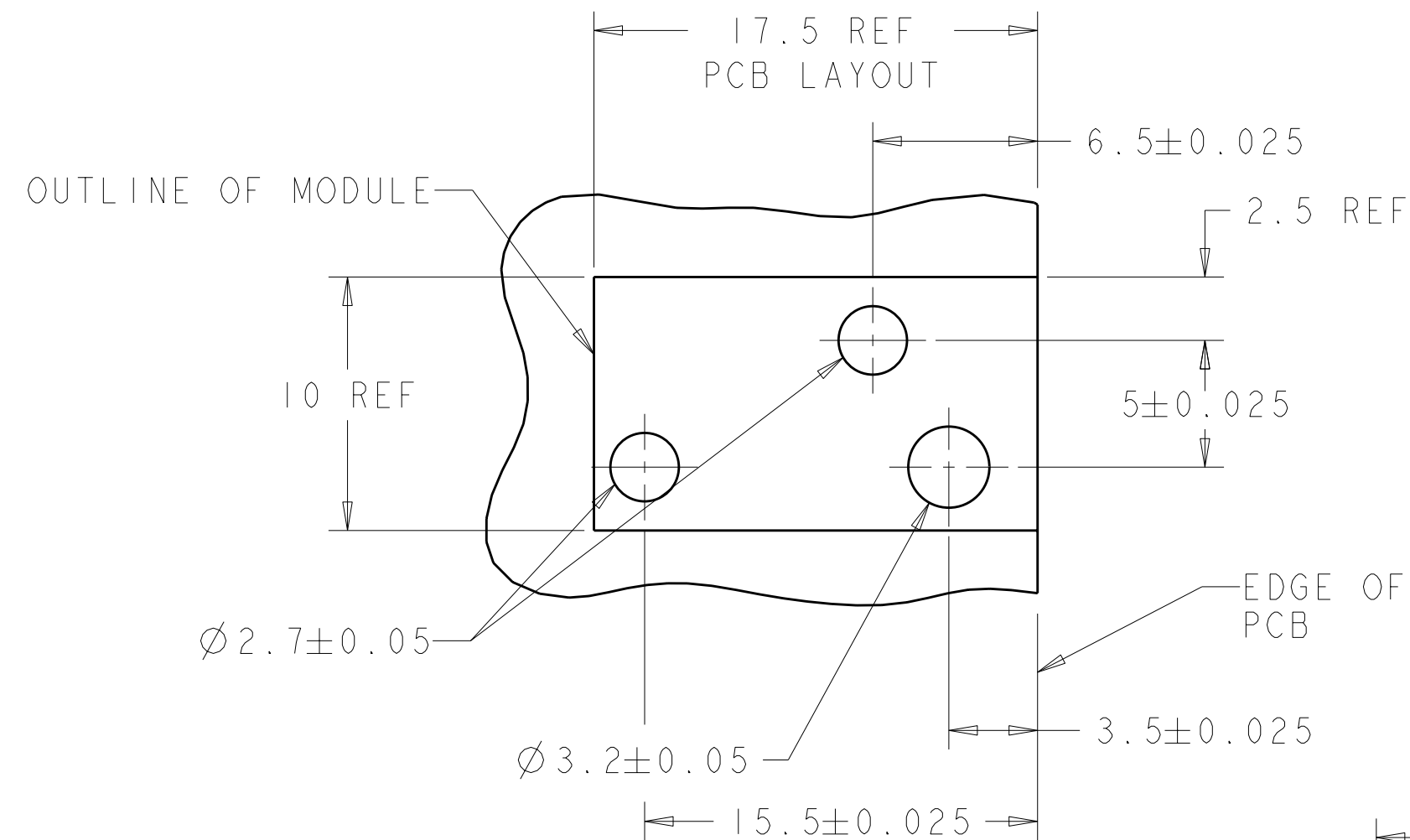
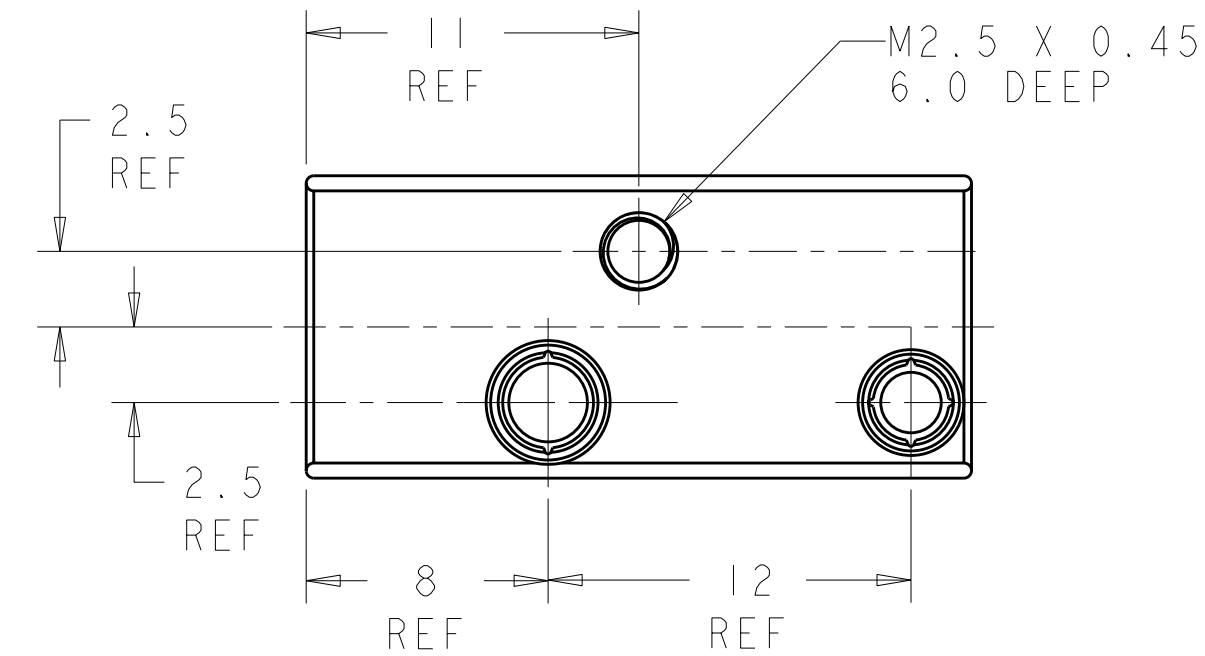
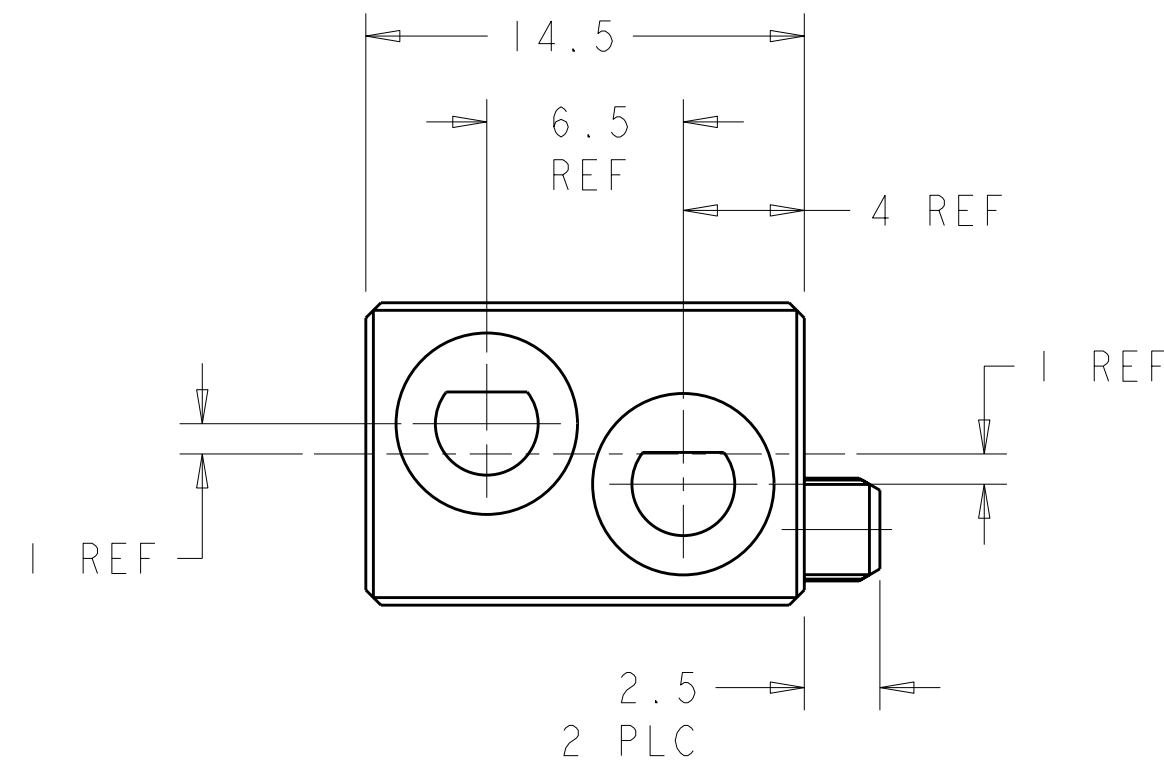
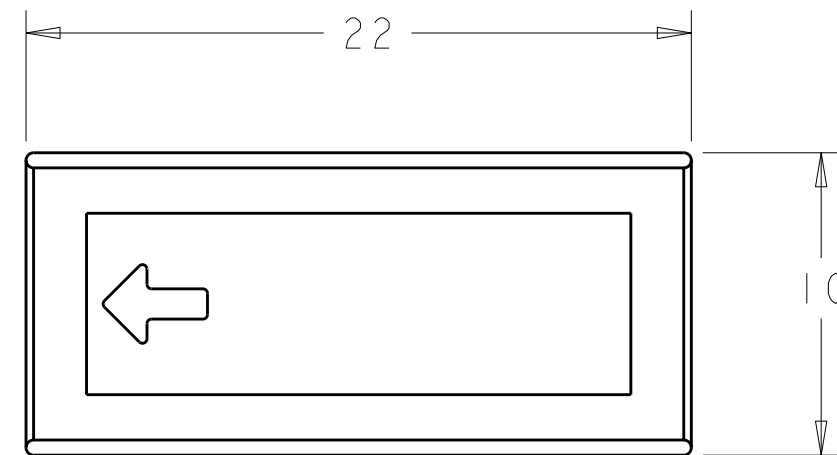




LOC	DIST	REVISIONS					
AD	00	P	LTR	DESCRIPTION	DATE	DWN	APVD
			O	RELEASED	14FEB2006	BC	RP
			A	REV PER ECO-08-000400	11JAN2008	BC	RP

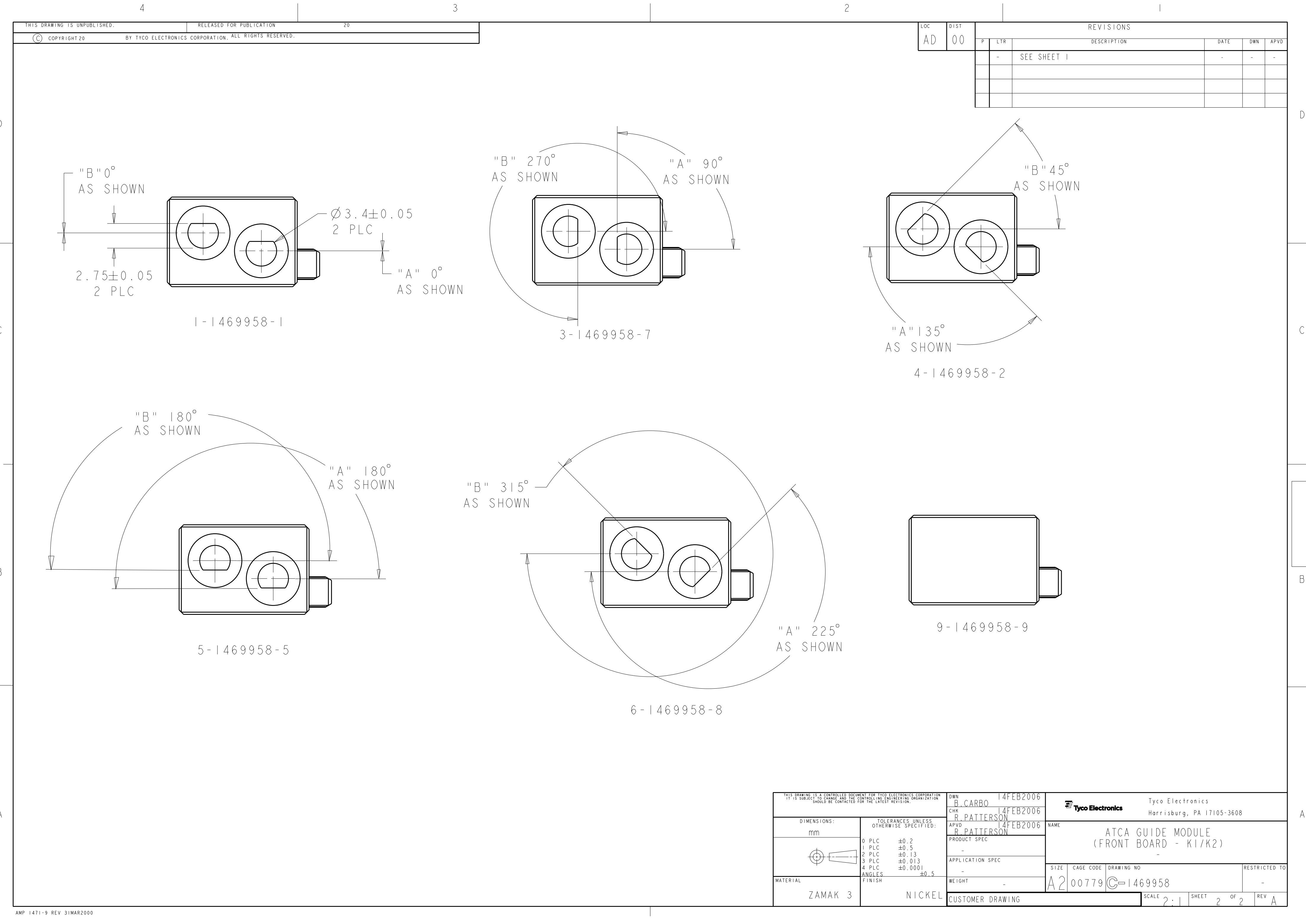


1. RECOMMENDED MOUNTING HARDWARE- M2.5 X 0.45 SCREW,
7.0MM LONG UP TO 2.9 MM THICK PCB
8.0MM LONG FOR 3.0 TO 4.0 MM THICK PCB,
10.0MM FOR 4.1 TO 6.0MM THICK PCB,
12.0MM FOR 6.1 TO 8.0MM THICK PCB.
(HARDWARE NOT SUPPLIED WITH PART NUMBER)



N/A	N/A	UNKEYED	9-1469958-9
225°	315°	6 8	6-1469958-8
180°	180°	5 5	5-1469958-5
135°	45°	4 2	4-1469958-2
90°	270°	3 7	3-1469958-7
0°	0°	1 1	1-1469958-1
"A"	"B"	KEYING POS	PART NUMBER

THIS DRAWING IS A CONTROLLED DOCUMENT FOR TYCO ELECTRONICS CORPORATION IT IS SUBJECT TO CHANGE AND THE CONTROLLING ENGINEERING ORGANIZATION SHOULD BE CONTACTED FOR THE LATEST REVISION.		DWN B. CARBO 14FEB2006		 Tyco Electronics Harrisburg, PA 17105-3608	
DIMENSIONS: mm		TOLERANCES UNLESS OTHERWISE SPECIFIED: 0 PLC ±0.2 1 PLC ±0.5 2 PLC ±0.13 3 PLC ±0.001 4 PLG ±0.001 ANGLES ±0.5		NAME ATCA GUIDE MODULE (FRONT BOARD - K1/K2) -	
		PRODUCT SPEC -		SIZE A2	
MATERIAL ZAMAK 3		APPLICATION SPEC -		CAGE CODE 00779	
FINISH NICKEL		WEIGHT -		DRAWING NO C-1469958	
CUSTOMER DRAWING		SCALE 2:1		SHEET 1 OF 2	
REV A					



LOC	DIST	REVISIONS					
AD	00	P	LTR	DESCRIPTION	DATE	DWN	APVD
			-	SEE SHEET 1	-	-	-

THIS DRAWING IS A CONTROLLED DOCUMENT FOR TYCO ELECTRONICS CORPORATION IT IS SUBJECT TO CHANGE AND THE CONTROLLING ENGINEERING ORGANIZATION SHOULD BE CONTACTED FOR THE LATEST REVISION.		DWN B. CARBO 14FEB2006	Tyco Electronics Harrisburg, PA 17105-3608			
DIMENSIONS: mm		CHK R. PATTERSON 14FEB2006	NAME ATCA GUIDE MODULE (FRONT BOARD - K1/K2)			
TOLERANCES UNLESS OTHERWISE SPECIFIED:		APVD R. PATTERSON 14FEB2006				
0 PLC ±0.2 1 PLC ±0.5 2 PLC ±0.13 3 PLC ±0.013 4 PLC ±0.0001 ANGLES ±0.5 FINISH		PRODUCT SPEC - APPLICATION SPEC - WEIGHT -	SIZE A2			
MATERIAL ZAMAK 3		NICKEL	CAGE CODE 00779			
		CUSTOMER DRAWING	DRAWING NO 1469958			
			RESTRICTED TO -			
			SCALE 2:1			
			SHEET 2			
			OF 2			
			REV A			

Mouser Electronics

Authorized Distributor

Click to View Pricing, Inventory, Delivery & Lifecycle Information:

[TE Connectivity:](#)

[5-1469958-5](#)