

REV	DESCRIPTION	DATE	DWN	APR
11	REVISED PER ECO-11-005139	28MAR11	RK	HMR

**SAFETY ORGANIZATION(S):**

THIS FILTER HAS BEEN FORMALLY RECOGNIZED, CERTIFIED OR APPROVED BY THE LISTED AGENCY. THEREFORE, ALL TEST/REQUIREMENTS SPECIFIED IN THE LATEST REVISION OF THE FOLLOWING AGENCY STANDARDS HAVE BEEN MET:

UL RECOGNIZED  
 CSA CERTIFIED  
 VDE APPROVED

UL 1283  
 CSA 22.2, NO.0,0.4,8  
 VDE 565-3

**OPERATING SPECIFICATIONS:**

LINE VOLTAGE/CURRENT: 3.0 AMP., 120/250 VAC  
 2.5 AMP./40°C, 250 VAC

LINE FREQUENCY: 50-60Hz

MAX. CASE RISE @ RATED CURRENT: 40°C

MAX. LEAKAGE CURRENT, EACH  
 LINE TO GROUND: 1.0 mA at 250V 50 Hz

OPERATING AMBIENT TEMP. RANGE: -10°C TO +40°C @ RATED CURRENT, I<sub>r</sub>

IN AN AMBIENT, T<sub>a</sub>, HIGHER THAN 40°C, THE MAXIMUM OPERATING CURRENT, I<sub>o</sub>, IS AS FOLLOWS:

$$I_o = I_r \sqrt{\frac{85 - T_a}{45}}$$

**RELIABILITY SPECIFICATIONS:**

STORAGE TEMPERATURE: -40°C TO +85°C

HUMIDITY: 21 DAYS @ 40°C 95% RH

CURRENT OVERLOAD TEST: 6 TIMES RATED CURRENT FOR 8 SECONDS

**TEST SPECIFICATIONS:**

INDUCTANCE: 1.03 mH NOMINAL

CAPACITANCE: (MEASURED @ 1 KHz, 0.25 VAC MAX., 25°C ±1°C)

LINE TO GROUND: .013µF ±20%

LINE TO LINE: .811µF ±20%

DISCHARGE RESISTOR: 330 KΩ

LINE/GROUND AND LINE/LINE: 6000 MΩ (MIN) AT 100 VDC

INSULATION RESISTANCE (W/O DISCHARGE RESISTOR): 20°C AND 50% RH

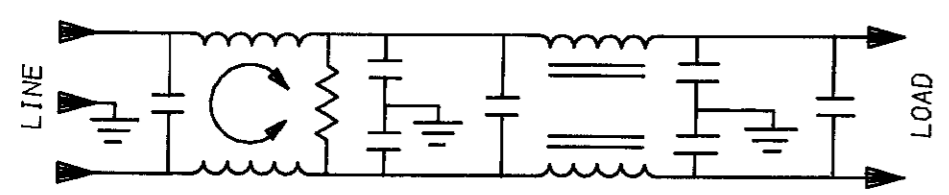
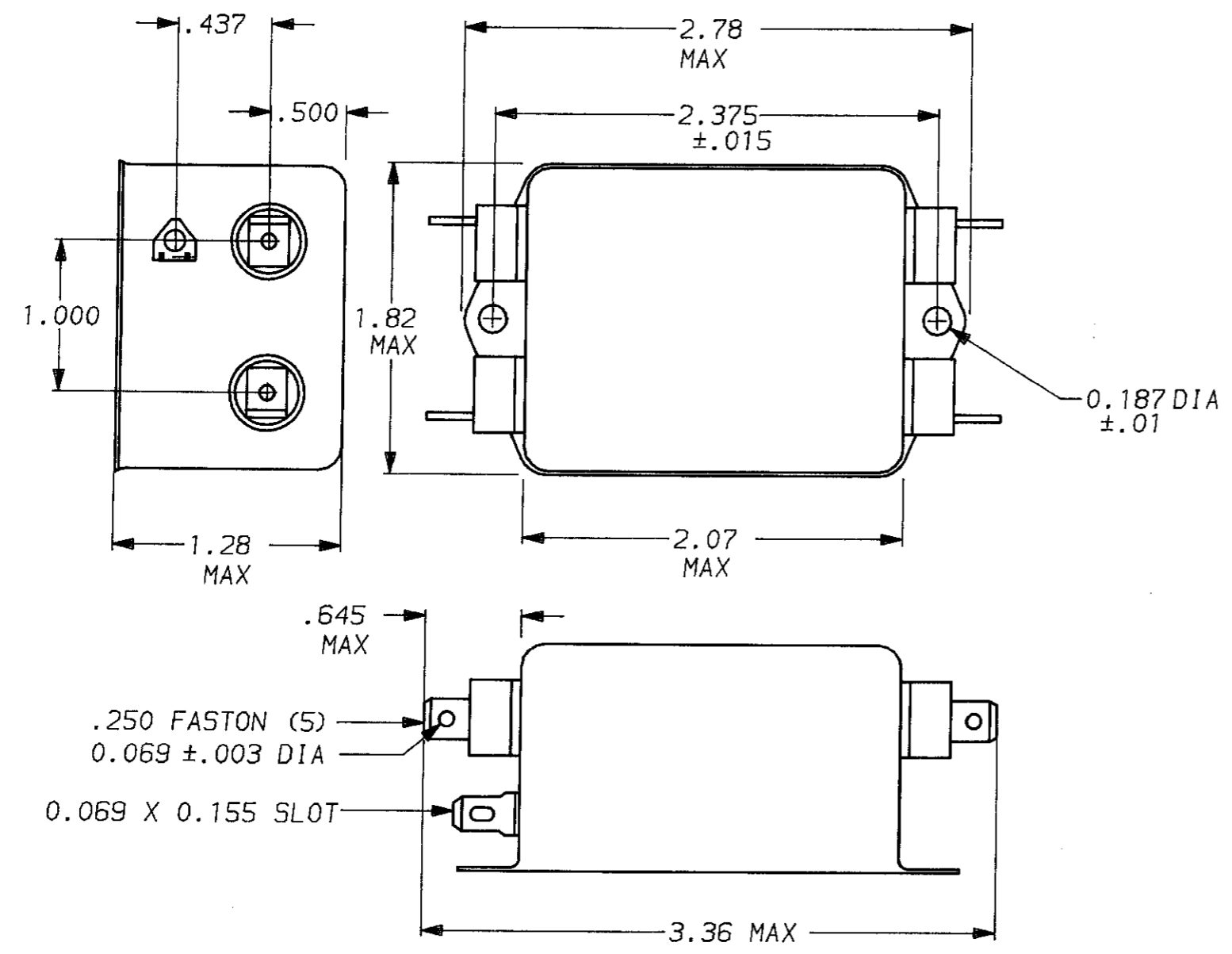
**RECOMMENDED RECEIVING INSPECTION HIPOT:**

LINES TO GROUND: 2250 VDC FOR 1 MINUTE

LINE TO LINE: 1450 VDC FOR 1 MINUTE

**FILTER APPROVAL:**

THE BEST WAY TO SELECT AND QUALIFY A FILTER IS FOR YOUR ENGINEERING TO TEST THE UNIT IN YOUR EQUIPMENT.



50Ω - 50Ω (MINIMUM) INSERTION LOSS									
FREQUENCY MHz	.15	.3	.5	1.0	2.0	5.0	10	20	30
COMMON dB	13	20	25	20	45	65	65	65	63
DIFF. dB	25	40	65	65	65	62	55	35	35

TOLERANCE EXCEPT AS NOTED		
DECIMAL:	.XXX	.XX
ENGLISH:	±.025	±.01
METRIC:	±	—
MATERIAL:		
AS SUPPLIED		
FINISH:		
AS SUPPLIED		

<b>STE</b> TE Connectivity			
<b>POWER LINE FILTER</b>			
SCALE	DATE	DRG. NO.	REV.
NTS	9-12-89	3VW1	11
DRW. BY	ORIGINATOR		
TDL	CW		

# Mouser Electronics

Authorized Distributor

Click to View Pricing, Inventory, Delivery & Lifecycle Information:

[TE Connectivity:](#)

[3VW1](#)