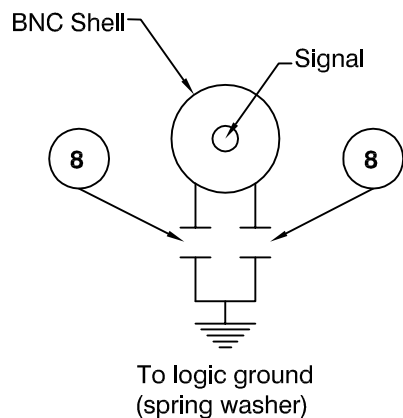
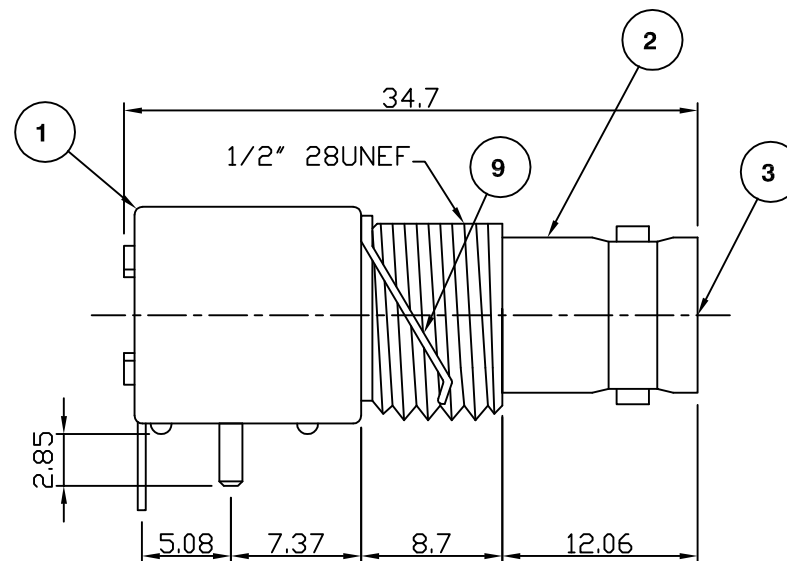
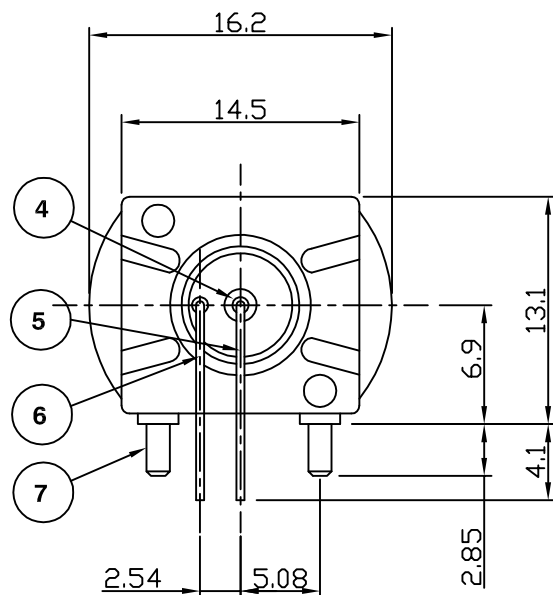
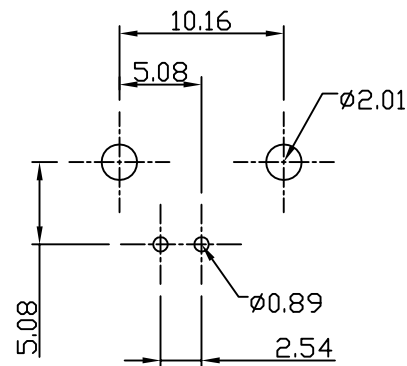


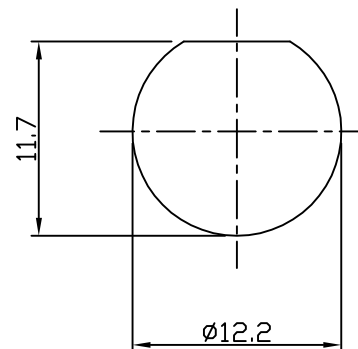
RoHS COMPLIANT



Capacitor Circuit Diagram



Recommended PCB Layout



Panel Cutout

### Electrical Characteristics

Nominal Impedance:	50 ohms
Frequency Range:	DC to 1 GHz
Operating Voltage (rms):	500 V maximum at sea level
Dielectric Withstand Voltage (rms):	500 V maximum at sea level
Contact Resistance:	3.0 milliohms maximum
Insulation Resistance:	5000 megohms minimum

### Mechanical Characteristics

Mating Cycles:	500 cycles minimum
Interface Dimensions:	Conform to MIL-C-39012

### Environmental Characteristics

Temperature Range:	-65 °C to +165 °C
--------------------	-------------------

	PART	DESCRIPTION	
1	Body	PBT + 30% Glass Fibre (UL 94V-0)	
2	Body	Zinc Alloy, nickel plated	
3	Dielectric	Polypropylene UL 94HB	
4	Contact	Phosphor bronze, gold plated (Interface)	
5	Signal Contact	Copper clad steel, tin plated	
6	Ground Contact	Copper, tin plated	
7	Mounting Post	Brass, tin plated	
8	Ceramic Chip Capacitor	4700 pF±10%	
9	Spring Washer	Phosphor bronze, Nickel plated	
Corrected finish of Item 5. was tin lead	MS	7	4 Sep 13
CAD Issue	SN	6	04 Feb 02
New format	DW	5	22 Feb 99
Mounting hole size changed	IS	4	27 Aug 92
Capacitor circuit diagram added	IS	3	19 May 92
Capacitor values added	IS	2	10 April 92
First Issue	IS	1	01 March 92
DESCRIPTION OF REVISION	APPVD	ISS	DATE



Cinch Connectivity Solutions  
11 Bilton Road,  
Chelmsford,  
Essex,  
CM1 2UP, UK.  
Tel: +44 (0) 1245 359515  
Fax: +44 (0) 1245 358938

SCALE: Not To Scale

DIMENSIONS: mm

TOLERANCES:  
± 0.2mm unless  
otherwise stated

DRAWN BY:

S Nash

CHECKED BY:

S Nash

APPROVED BY:

M Nielsen

DATE:

04 Feb 02

TITLE:

Low Profile BNC Right Angle  
PCB Mount Jack Filter  
Connector

PART NUMBER:

**VBF211**

PAGE: 1 of 1

# Mouser Electronics

Authorized Distributor

Click to View Pricing, Inventory, Delivery & Lifecycle Information:

[Cinch Connectivity Solutions:](#)

[VBF211](#)