

4

3

2

1

THIS DRAWING IS UNPUBLISHED.

RELEASED FOR PUBLICATION

© COPYRIGHT

ALL RIGHTS RESERVED.

LOC

DIST


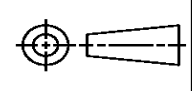
REVISIONS

P	LTR	DESCRIPTION	DATE	DWN	APVD
	A1	ECR-14-003637	12MAR2014	GK	HMR

REPLACED BY OCEAN STYLE APPLICATOR PART
NUMBER 2150032-2

FOR REPLACEMENT PARTS FOR APPLICATOR 1855519
REFER TO ADDITIONAL PAGE(S). SPARE PARTS KIT (IF LISTED)
WILL REMAIN AVAILABLE.

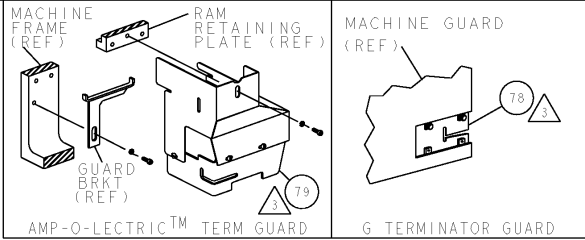
THE REPLACEMENT OCEAN STYLE APPLICATOR HAS THE
SAME TERMINATOR/PRESS INTERFACE AS APPLICATOR
1855519


THIS DRAWING IS A CONTROLLED DOCUMENT.		DWN	GOPALAKRISHNA HV		 TE Connectivity	
DIMENSIONS:		CHK	RAGHAVENDRA			
		TOLERANCES UNLESS OTHERWISE SPECIFIED:		NAME		
		0 PLC ±		APVD RAGHAVENDRA		
		1 PLC ±		PRODUCT SPEC		
2 PLC ±		3 PLC ±		APPLICATION SPEC		
3 PLC ±		4 PLC ±		SIZE		
4 PLC ±		ANGLES ±		CAGE CODE		DRAWING NO
MATERIAL		FINISH		WEIGHT		RESTRICTED TO
				A3		©- 1855519
CUSTOMER DRAWING				SCALE	SHEET 1 OF 2	REV A1

PART NUMBER		REV	FIRST USED	POWER UNIT	FEED TYPE
1855519-1		A	122500-1	LEADMAKER & BENCH MODEL G	POST FEED
1855519-2		A	565435-5	BENCH MODEL K	POST FEED
7-1855519-7		A	-	SPARE PARTS	-

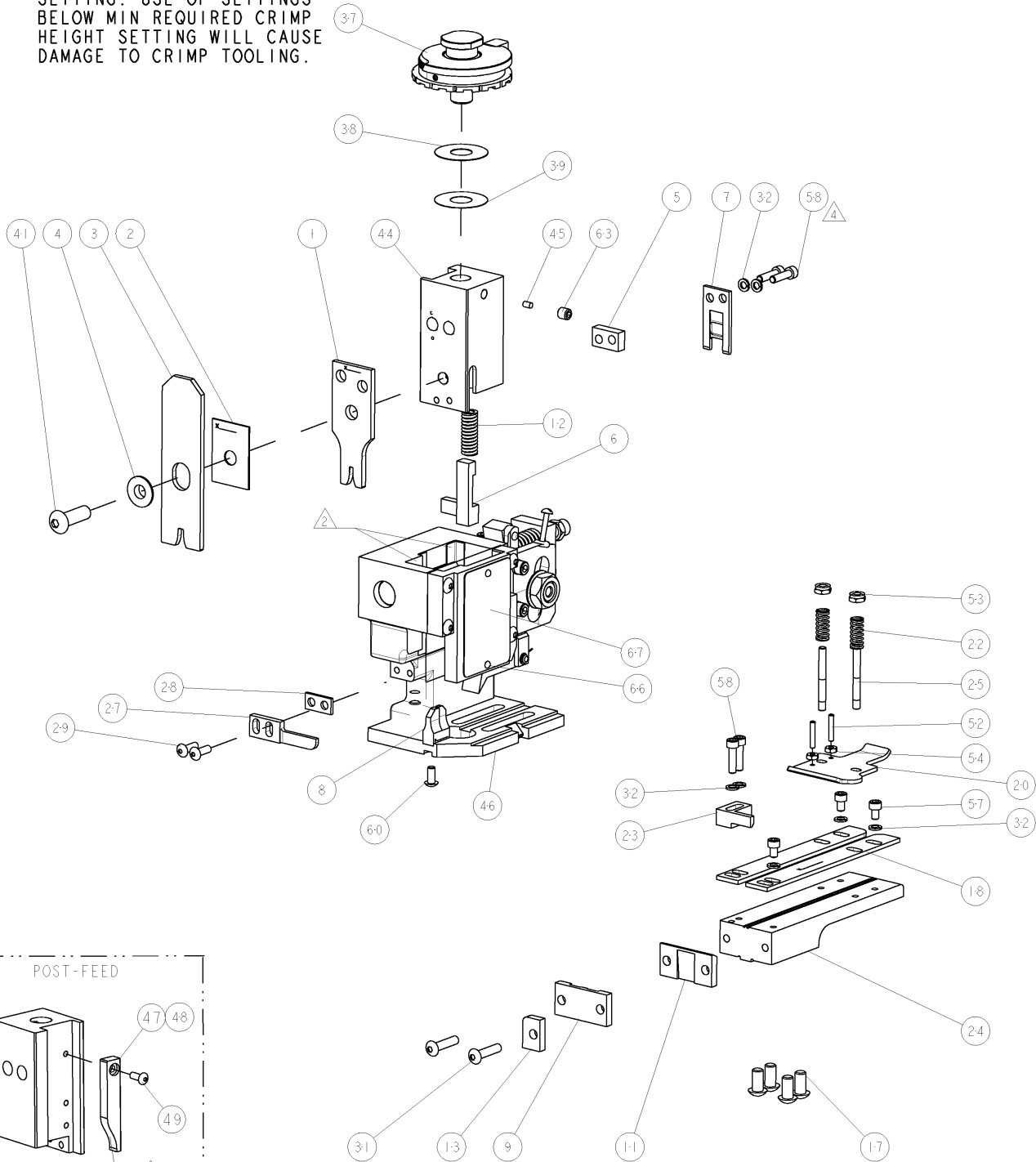
- 1 RECOMMENDED SPARE PARTS
2 GREASE LIGHTLY
3 GUARD MUST BE IN PLACE WHEN OPERATING APPLICATOR IN A BENCH MACHINE.
4 CUT TO LENGHT AT ASSEMBLY.

***WARNING:**
ON INSTALLATION, SET WIRE DISC TO LARGEST WIRE SIZE SETTING. USE OF SETTINGS BELOW MIN REQUIRED CRIMP HEIGHT SETTING WILL CAUSE DAMAGE TO CRIMP TOOLING.



TERMINAL NAME: .187 SERIES POSITIVE LOCK RECEPT.					
170325	-	TE TERMINAL - TE CRIMP SPECS			
173691	-			REF SETTING*	
-	-	CRIMP HEIGHT		WIRE SIZE	
-	-	.059±.002[1.50±0.05mm]		16AWG or 1.25mm2	A-6
-	-	.052±.002[1.32±0.05mm]		18AWG or 0.75mm2	B-8
-	-	.047±.002[1.19±0.05mm]		20AWG or 0.5mm2	D-0
-	-			-	-
-	-	CRIMP	SIZE	TYPE	RANGE
-	-	WIRE	.090 [2.29mm]	F	16-20 AWG
-	-	INSUL	.155 [3.94mm]	O	.075 - .140
WIRE STRIP LENGTH .148 - .163		TERM APPL SPEC [14-504]		FEED .870	APPL INSTRUCTIONS 408-8039
				SET UP GAGE 458638-1	

LOC		DIST		REVISIONS			
A		66		DESCRIPTION	DATE	OWN	APVD
				RELEASED	15JUL2009	KS	GB



3	-	REF	-	-	455745-1	GUARD WINDOW	79
3	-	-	REF	-	679532-1	INSERT, GUARD	78
-	1	1	-	-	217238-1	GENERAL INSTRUCTION PKG	72
-	1	1	-	-	4088039	EF APPL INST 408-8039	71
-	1	1	-	-	461264-5	PLATE, IDENTIFICATION	67
-	2	2	-	-	21017-2	SCREW, DRIVE	66
-	1	1	-	-	21009-2	SCR, SET, SELF LOCKING 1/4-20 X .250	63
-	1	1	-	-	22733-8	SCR, BHSC, SELF-LOCKING, 8-32 X .375	60
-	4	4	-	-	2-21000-8	SCR, SKT HD CAP 8-32 X .625	58
-	3	3	-	-	2-21000-5	SCR, SKT HD CAP 8-32 X .250	57
-	2	2	-	-	21018-4	NUT, HEX, REG 4-40	54
-	2	2	-	-	21022-2	NUT, LOCK, HEX, TORQUE, 8-32	53
-	2	2	-	-	2-21006-6	SCR, SET, CUP POINT 4-40 X .625	52
-	1	1	-	-	1-21002-7	SCR, BTN SKT CAP 6-32 X .375	49
-	1	-	-	-	690501-3	CAM, POST FEED, 1 1/8	48
-	-	1	-	-	690501-4	CAM, POST-FEED 1 5/8	47
-	1	1	-	-	458980-1	SUB ASSY, APPLICATOR FRAME	46
-	1	1	-	-	690191-1	PLUG,NYLON	45
-	1	1	-	-	455674-1	RAM	44
-	1	1	-	-	7-21002-9	SCR, BTN SKT HD CAP 5/16-24 X 1.00	41
-	1	1	-	-	690125-1	SHIM SUB-ASSY	39
-	1	1	-	-	1-469367-0	SHIM	38
-	1	1	-	-	879103-2	FINE ADJUST HEAD ASSEMBLY	37
-	7	7	-	-	21024-4	WASHER, SPRG LOCK, REG NO 8	32
-	2	2	-	-	3-21002-0	SCR, BTN SKT HD CAP 10-32 X .875	31
-	2	2	-	-	2-21002-2	SCR, BTN SKT HD CAP 8-32 X .500	29
-	1	1	-	-	3-690451-2	SPACER, STRIPPER	28
-	1	1	-	-	240639-1	STRIPPER (MACHINING)	27
-	2	2	-	-	22354-8	STUD, THREADED	25
-	1	1	-	-	804823-1	PLATE, STRIP GUIDE	24
-	1	1	-	-	240825-1	PLATE, STRIP HOLD DOWN	23
-	2	2	-	-	4-22281-1	SPRING, DRAG	22
-	1	1	-	-	454177-1	DRAG	20
-	2	2	-	-	454204-3	GUIDE, LOWER STRIP	18
-	4	4	-	-	3-21002-3	SCR, BTN SKT HD CAP 1/4-20 X .500	17
-	1	1	-	-	690481-2	SPACER, HOLD DOWN	13
-	1	1	-	-	23846-1	SPRING, DIE	12
-	1	1	-	-	240833-1	PLATE, REAR SHEAR	11
-	-	-	-	-	-	-	10
-	1	1	-	-	690482-4	PLATE, FRONT SHEAR	9
-	1	1	-	-	4-238005-1	ANVIL, COMBINATION	8
-	1	1	-	-	690474-4	BLADE, SLUG	7
-	1	1	-	-	4-455892-7	HOLD DOWN, TERMINAL	6
-	1	1	-	-	6-240641-5	SPACER	5
-	1	1	-	-	238009-1	BLOCK, FL CRIMPER SPACER	4
-	1	1	-	-	1-456134-2	CRIMPER, INSULATION F PREMIUM	3
-	1	1	-	-	455888-7	SPACER, CRIMPER	2
-	1	1	-	-	456406-2	CRIMPER, WIRE PREMIUM	1

-77		-2	-1	U/M	PART NO	DESCRIPTION	ITEM NO
DIMENSIONS:		TOLERANCES, UNLESS OTHERWISE SPECIFIED:		PRODUCT SPEC		APPLICATION SPEC	
INCHES		0 PLC ±.1		1 PLC ±.01		2 PLC ±.001	
		3 PLC ±.0001		4 PLC ±.0001		ANGLES	
MATERIAL		FINISH		WEIGHT		CUSTOMER DRAWING	

CUSTOMER VIEWABLE ASSEMBLY

Mouser Electronics

Authorized Distributor

Click to View Pricing, Inventory, Delivery & Lifecycle Information:

[TE Connectivity:](#)

[1855519-1](#)