

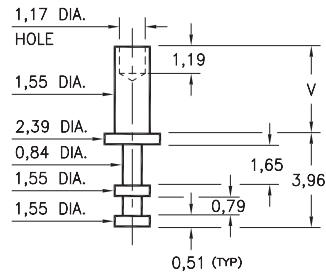
MALE PCB PINS

SOLDER TERMINAL TURRETS

2348

2348-X-00-XX-00-00-07-0

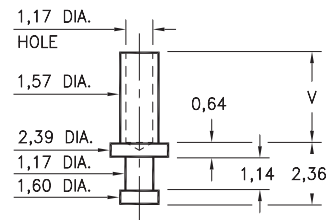
Swage mount in 1,63 hole



2301

2301-X-00-XX-00-00-07-0

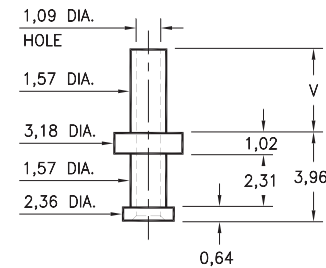
Swage mount in 1,70 hole



2506

2506-X-00-XX-00-00-07-0

Swage mount in 1,70 hole

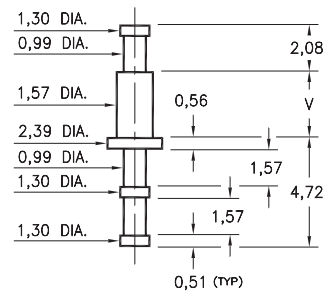


Basic Part Number	Board Thickness	Length V
2XXX-1	0,79	1,35
2XXX-2	1,57	2,13
2XXX-3	2,39	2,92
2XXX-4	3,18	3,73

2310

2310-X-00-XX-00-00-07-0

Swage mount in 1,70 hole

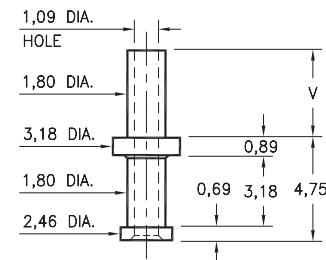


Basic Part Number	Board Thickness	Length V
2310-1	0,79	1,35
2310-2	1,57	2,08
2310-3	2,39	2,87
2310-4	3,18	3,68

2505

2505-X-00-XX-00-00-07-0

Swage mount in 1,93 hole

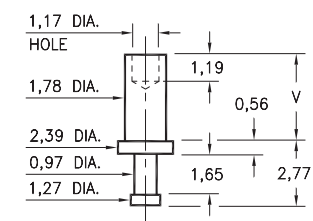


Basic Part Number	Board Thickness	Length V
2505-1	0,79	1,57
2505-2	1,57	2,36
2505-3	2,39	3,18
2505-4	3,18	3,96

2325

2325-X-00-XX-00-00-07-0

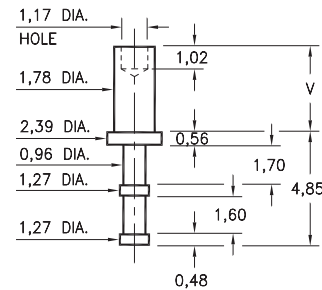
Swage mount in 1,85 hole



2355

2355-X-00-XX-00-00-07-0

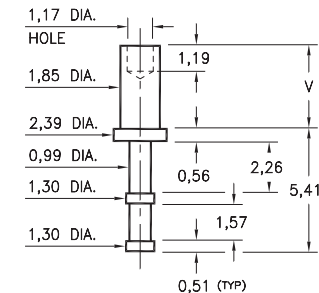
Swage mount in 1,85 hole



2365

2365-X-00-XX-00-00-07-0

Swage mount in 1,93 hole



Basic Part Number	Board Thickness	Length V
23X5-1	0,79	1,35
23X5-2	1,57	2,13
23X5-3	2,39	2,92
23X5-4	3,18	3,73

SPECIFICATIONS:

Pin Material: Brass Alloy 360, 1/2 Hard
(Swage pins are annealed)

Dimensions: Millimeters

Tolerances On: Lengths: $\pm 0,13$
Diameters: $\pm 0,051$
Angles: $\pm 2^\circ$



ORDER CODE: XXXX - X - 00 - XX - 00 - 00 - 07 - 0

BASIC PART #

SPECIFY PIN FINISH:

- 01 5,08 μ m TIN/LEAD OVER NICKEL
- ◆ 80 5,08 μ m TIN OVER NICKEL (RoHS)
- ◆ 44 7,62 μ m SILVER OVER COPPER (RoHS)
- 50 7,62 μ m ELECTRO-SOLDER
(60/40 SnPb)



Mouser Electronics

Authorized Distributor

Click to View Pricing, Inventory, Delivery & Lifecycle Information:

Mill-Max:

[2355-3-00-50-00-00-07-0](#) [2348-2-00-50-00-00-07-0](#) [2506-3-00-80-00-00-07-0](#) [2506-2-00-80-00-00-07-0](#) [2301-2-00-44-00-00-07-0](#) [2355-2-00-44-00-00-07-0](#) [2506-3-00-44-00-00-07-0](#) [2506-2-00-15-00-00-07-0](#)