

Customer Information Sheet

DRAWING No.: M30-600XX46

SHEET 2 OF 2

IF IN DOUBT - ASK

©

NOT TO SCALE

THIRD ANGLE PROJECTION

ALL DIMENSIONS IN mm

SPECIFICATIONS:

MATERIAL:
 MOULDING = PA6T/66 NATURAL,
 UL94V-0
 CONTACT = BRASS
 RETAINER = PHOSPHOR BRONZE
FINISH:
 CONTACT = 2.03µ - 2.54µ 100% TIN
 OVER 0.76µ NICKEL
 RETAINER = 2.03µ - 2.54µ 100% TIN
 OVER 0.76µ NICKEL

ELECTRICAL:

CURRENT RATING = 1A AC/DC
 VOLTAGE RATING = 150V AC/DC
 CONTACT RESISTANCE = 30mΩ MAX
 INSULATION RESISTANCE = 500 MΩ MIN
 DIELECTRIC WITHSTANDING VOLTAGE = 500V AC
 FOR ONE MINUTE

ENVIRONMENTAL:

TEMPERATURE RANGE = -25° TO +85°C

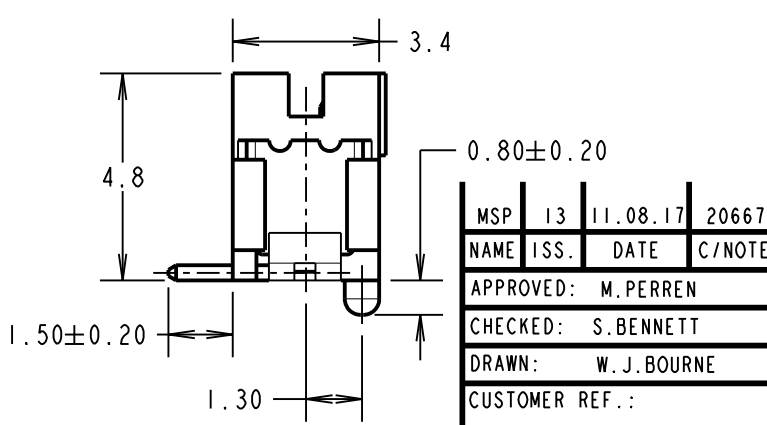
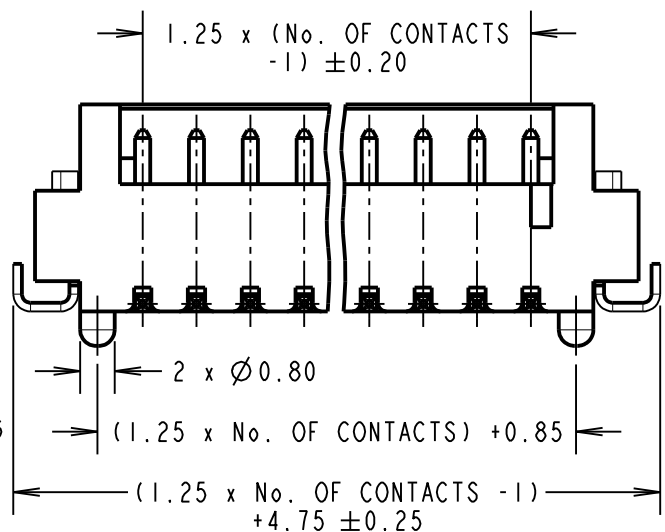
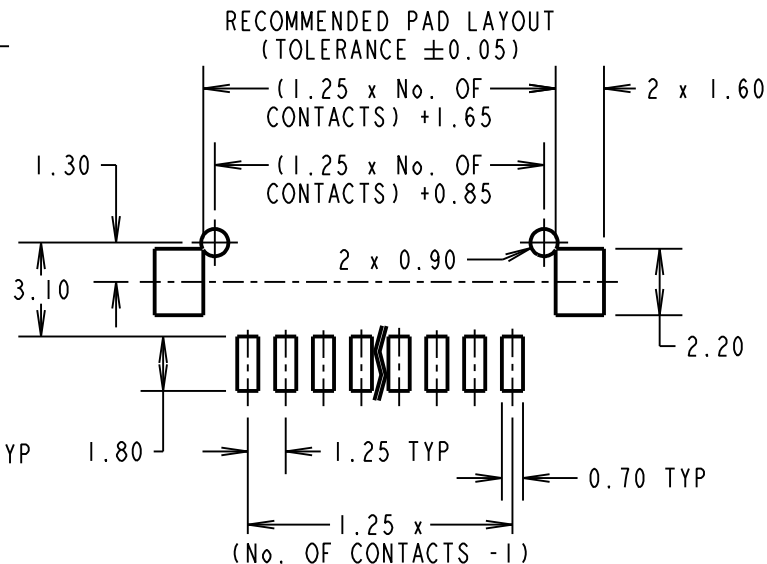
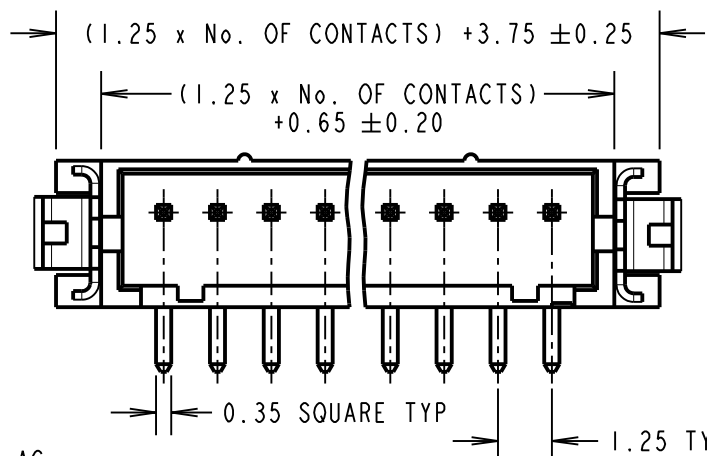
PACKING: TUBE

FOR COMPLETE SPECIFICATION,
 SEE COMPONENT SPECIFICATION
 C025XX (LATEST ISSUE)

ORDER CODE:
M30-600XX46
 No. OF CONTACTS
 02 TO 15
 FINISH:
 46 = 100% TIN

NOTES:

- MATES WITH M30-1050046 AND M30-1060046 CRIMP CONTACTS, WITH M30-110XX00 CRIMP MOULDING.
- COPLANARITY OF CONTACTS AND RETAINER TO BE 0.1mm MAX.



MSP	13	11.08.17	20667
NAME	ISS.	DATE	C/NOTE
APPROVED: M. PERREN			
CHECKED: S. BENNETT			
DRAWN: W. J. BOURNE			
CUSTOMER REF.:			
ASSEMBLY DRG:			

HARWIN

www.harwin.com
 technical@harwin.com

THIS DRAWING AND ANY INFORMATION OR DESCRIPTIVE MATTER SET OUT HEREON ARE CONFIDENTIAL AND COPYRIGHT PROPERTY OF THE HARWIN GROUP AND MUST NOT BE DISCLOSED, LOANED, COPIED OR USED FOR MANUFACTURING, TENDERING OR FOR ANY OTHER PURPOSE WITHOUT THEIR WRITTEN PERMISSION.

TOLERANCES
 X. = ±1mm
 X.X = ±0.50mm
 X.XX = ±0.10mm
 X.XXX = ±0.01mm
 ANGLES = ±5°
 UNLESS STATED

MATERIAL:
 SEE ABOVE
FINISH:
 SEE ABOVE
S/AREA:
 mm²

TITLE:
 1.25mm PITCH SIL
 SMT BOARD MOUNT CONNECTOR
DRAWING NUMBER:
M30-600XX46
 SHT 2 OF 2

Mouser Electronics

Authorized Distributor

Click to View Pricing, Inventory, Delivery & Lifecycle Information:

[Harwin:](#)

[M30-6000646](#) [M30-6000446](#) [M30-6000946](#) [M30-6000846](#) [M30-6000346](#) [M30-6000246](#) [M30-6001246](#) [M30-6000546](#) [M30-6001446](#) [M30-6001146](#) [M30-6001346](#) [M30-6001046](#) [M30-6001546](#) [M30-6000746](#)