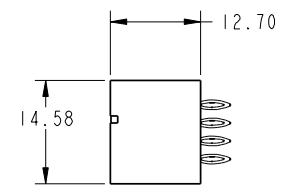
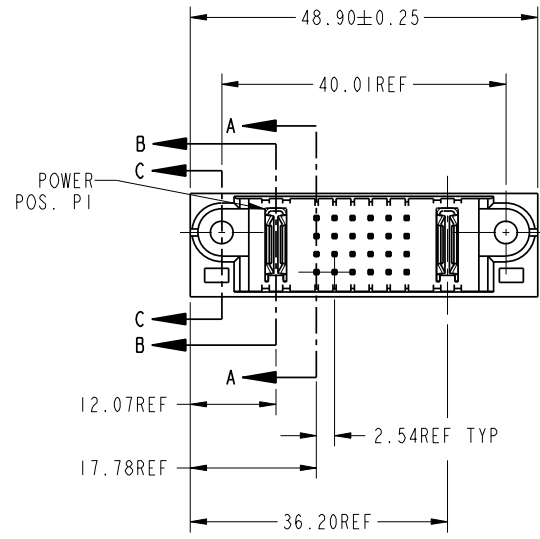
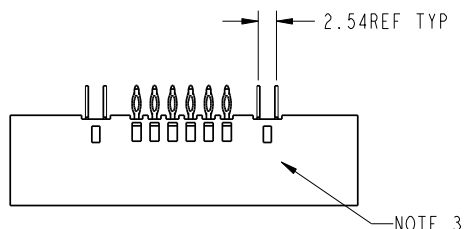


Tous droits strictement reserves. Reproduction ou communication a des tiers interdite sous quelque forme que ce soit sans autorisation écrite du propriétaire. Propriété de c FCI. Droits de reproduction FCI.



All rights strictly reserved. Reproduction or issue to third parties in any form whatever is not permitted without written authority from the proprietor. Property of FCI. Copyright FCI.

| | | | | | | | | | | | |
|------------------------|------------------|-------|----|--------|---|---|---|---|---|-------|----|
| PRODUCT No. | ROWS | POWER | | SIGNAL | | | | | | POWER | |
| | | E1 | P1 | 1 | 2 | 3 | 4 | 5 | 6 | P2 | E2 |
| 51952-002-- NOTE: 3 | D C B A | | PC | G | G | G | G | G | G | PC | |



| CODE | DIM "M" ±.010 [0.25] | CONTACT TYPE |
|------|-------------------------|--------------|
| G | [6.86] | SIGNAL |
| K | [5.59] | SIGNAL |
| PC | [N/A] | POWER |

| | | | | | | | | | | | |
|------------|-----------|-------|----------|--------------|--------------------|---------------------------------------|--------------------|--|--------|--|--|
| mat'l code | | | | SEE NOTE | | tolerances unless otherwise specified | | CUSTOMER | | | |
| ltr | ecn no. | dr | date | linear | 0.X ±0.3 | COPY | | FCI | | | |
| A | V12513 | DAI | 10/31/01 | 0.XX ±0.13 | projection | | www.fciconnect.com | | | | |
| B | V21104 | TBA | 10/01/02 | 0.XXX ±0.051 | MM | | title | | | | |
| C | DG05-0472 | Ryan | 11/17/05 | angles | 0° ±2° | scale | | IP + 24S + IP PRESS FIT VERTICAL HEADER | | | |
| D | DG07-0357 | JULIA | 09/10/07 | dr | J. WITMER 9/19/01 | 1:1 | | product family | | | |
| | | | | enrg | J. ALLISON 9/19/01 | | | PwrBlade | | | |
| | | | | chr | J. ALLISON 9/19/01 | | | code | | | |
| | | | | appd | J. ALLISON 9/19/01 | | | 213 | | | |
| | | | | sheet index | D | D | | | sheet | | |
| | | | | revision | I | I | | | 1 of 3 | | |

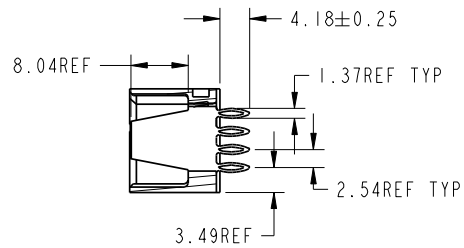
| | | | | | | | | | | | | | |
|-------------|--|----------|--|----|--|---|--|-------|--|----------------|--|------|--|
| sheet index | | revision | | D | | D | | scale | | product family | | code | |
| | | | | I | | I | | 1:1 | | PwrBlade | | 213 | |
| | | | | | | | | | | product family | | code | |
| | | | | | | | | | | PwrBlade | | 213 | |
| | | | | | | | | | | product family | | code | |
| | | | | | | | | | | PwrBlade | | 213 | |
| | | | | | | | | | | product family | | code | |
| | | | | | | | | | | PwrBlade | | 213 | |
| | | | | | | | | | | product family | | code | |
| | | | | | | | | | | PwrBlade | | 213 | |
| | | | | | | | | | | product family | | code | |
| | | | | | | | | | | PwrBlade | | 213 | |
| | | | | | | | | | | product family | | code | |
| | | | | | | | | | | PwrBlade | | 213 | |
| | | | | | | | | | | product family | | code | |
| | | | | | | | | | | PwrBlade | | 213 | |
| | | | | | | | | | | product family | | code | |
| | | | | | | | | | | PwrBlade | | 213 | |
| | | | | | | | | | | product family | | code | |
| | | | | | | | | | | PwrBlade | | 213 | |
| | | | | | | | | | | product family | | code | |
| | | | | | | | | | | PwrBlade | | 213 | |
| | | | | | | | | | | product family | | code | |
| | | | | | | | | | | PwrBlade | | 213 | |
| | | | | | | | | | | product family | | code | |
| | | | | | | | | | | PwrBlade | | 213 | |
| | | | | | | | | | | product family | | code | |
| | | | | | | | | | | PwrBlade | | 213 | |
| | | | | | | | | | | product family | | code | |
| | | | | | | | | | | PwrBlade | | 213 | |
| | | | | | | | | | | product family | | code | |
| | | | | | | | | | | PwrBlade | | 213 | |
| | | | | | | | | | | product family | | code | |
| | | | | | | | | | | PwrBlade | | 213 | |
| | | | | | | | | | | product family | | code | |
| | | | | | | | | | | PwrBlade | | 213 | |
| | | | | | | | | | | product family | | code | |
| | | | | | | | | | | PwrBlade | | 213 | |
| | | | | | | | | | | product family | | code | |
| | | | | | | | | | | PwrBlade | | 213 | |
| | | | | | | | | | | product family | | code | |
| | | | | | | | | | | PwrBlade | | 213 | |
| | | | | | | | | | | product family | | code | |
| | | | | | | | | | | PwrBlade | | 213 | |
| | | | | | | | | | | product family | | code | |
| | | | | | | | | | | PwrBlade | | 213 | |
| | | | | | | | | | | product family | | code | |
| | | | | | | | | | | PwrBlade | | 213 | |
| | | | | | | | | | | product family | | code | |
| | | | | | | | | | | PwrBlade | | 213 | |
| | | | | | | | | | | product family | | code | |
| | | | | | | | | | | PwrBlade | | 213 | |
| | | | | | | | | | | product family | | code | |
| | | | | | | | | | | PwrBlade | | 213 | |
| | | | | | | | | | | product family | | code | |
| | | | | | | | | | | PwrBlade | | 213 | |
| | | | | | | | | | | product family | | code | |
| | | | | | | | | | | PwrBlade | | 213 | |
| | | | | | | | | | | product family | | code | |
| | | | | | | | | | | PwrBlade | | 213 | |
| | | | | | | | | | | product family | | code | |
| | | | | | | | | | | PwrBlade | | 213 | |
| | | | | | | | | | | product family | | code | |
| | | | | | | | | | | PwrBlade | | 213 | |
| | | | | | | | | | | product family | | code | |
| | | | | | | | | | | PwrBlade | | 213 | |
| | | | | | | | | | | product family | | code | |
| | | | | | | | | | | PwrBlade | | 213 | |
| | | | | | | | | | | product family | | code | |
| | | | | | | | | | | PwrBlade | | 213 | |
| | | | | | | | | | | product family | | code | |
| | | | | | | | | | | PwrBlade | | 213 | |
| | | | | | | | | | | product family | | code | |
| | | | | | | | | | | PwrBlade | | 213 | |
| | | | | | | | | | | product family | | code | |
| | | | | | | | | | | PwrBlade | | 213 | |
| | | | | | | | | | | product family | | code | |
| | | | | | | | | | | PwrBlade | | 213 | |
| | | | | | | | | | | product family | | code | |
| | | | | | | | | | | PwrBlade | | 213 | |
| | | | | | | | | | | product family | | code | |
| | | | | | | | | | | PwrBlade | | 213 | |
| | | | | | | | | | | product family | | code | |
| | | | | | | | | | | PwrBlade | | 213 | |
| | | | | | | | | | | product family | | code | |
| | | | | | | | | | | PwrBlade | | 213 | |
| | | | | | | | | | | product family | | code | |
| | | | | | | | | | | PwrBlade | | 213 | |
| | | | | | | | | | | product family | | code | |
| | | | | | | | | | | PwrBlade | | 213 | |
| | | | | | | | | | | product family | | code | |
| | | | | | | | | | | PwrBlade | | 213 | |
| | | | | | | | | | | product family | | code | |
| | | | | | | | | | | PwrBlade | | 213 | |
| | | | | | | | | | | product family | | code | |
| | | | | | | | | | | PwrBlade | | 213 | |
| | | | | | | | | | | product family | | code | |
| | | | | | | | | | | PwrBlade | | 213 | |
| | | | | | | | | | | product family | | code | |
| | | | | | | | | | | PwrBlade | | 213 | |
| | | | | | | | | | | product family | | code | |
| | | | | | | | | | | PwrBlade | | 213 | |
| | | | | | | | | | | product family | | code | |
| | | | | | | | | | | PwrBlade | | 213 | |
| | | | | | | | | | | product family | | code | |
| | | | | | | | | | | PwrBlade | | 213 | |
| | | | | | | | | | | product family | | code | |
| | | | | | | | | | | PwrBlade | | 213 | |
| | | | | | | | | | | product family | | code | |
| | | | | | | | | | | PwrBlade | | 213 | |
| | | | | | | | | | | product family | | code | |
| | | | | | | | | | | PwrBlade | | 213 | |
| | | | | | | | | | | product family | | code | |
| | | | | | | | | | | PwrBlade | | 213 | |
| | | | | | | | | | | product family | | code | |
| | | | | | | | | | | PwrBlade | | 213 | |
| | | | | | | | | | | product family | | code | |
| | | | | | | | | | | PwrBlade | | 213 | |
| | | | | | | | | | | product family | | code | |
| | | | | | | | | | | PwrBlade | | 213 | |
| | | | | | | | | | | product family | | code | |
| | | | | | | | | | | PwrBlade | | 213 | |
| | | | | | | | | | | product family | | code | |
| | | | | | | | | | | PwrBlade | | 213 | |
| | | | | | | | | | | product family | | code | |
| | | | | | | | | | | PwrBlade | | 213 | |
| | | | | | | | | | | product family | | code | |
| | | | | | | | | | | PwrBlade | | 213 | |
| | | | | | | | | | | product family | | code | |
| | | | | | | | | | | PwrBlade | | 213 | |
| | | | | | | | | | | product family | | code | |
| | | | | | | | | | | PwrBlade | | 213 | |
| | | | | | | | | | | product family | | code | |
| | | | | | | | | | | PwrBlade | | 213 | |
| | | | | | | | | | | product family | | code | |
| | | | | | | | | | | PwrBlade | | 213 | |
| | | | | | | | | | | product family | | code | |
| | | | | | | | | | | PwrBlade | | 213 | |
| | | | | | | | | | | product family | | code | |
| | | | | | | | | | | PwrBlade | | 213 | |
| | | | | | | | | | | product family | | code | |
| | | | | | | | | | | PwrBlade | | 213 | |
| | | | | | | | | | | product family | | code | |
| | | | | | | | | | | PwrBlade | | 213 | |
| | | | | | | | | | | product family | | code | |
| | | | | | | | | | | PwrBlade | | 213 | |
| | | | | | | | | | | product family | | code | |
| | | | | | | | | | | PwrBlade | | 213 | |
| | | | | | | | | | | product family | | code | |
| | | | | </ | | | | | | | | | |

Tous droits strictement reserves. Reproduction ou communication a des tiers interdite sous quelque forme que ce soit sans autorisation écrite du propriétaire. Propriete de c FCI. Droits de reproduction FCI.

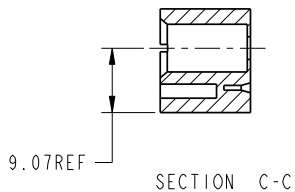


All rights strictly reserved. Reproduction or issue to third parties in any form whatever is not permitted without written authority from the proprietor. Property of FCI. Copyright FCI.

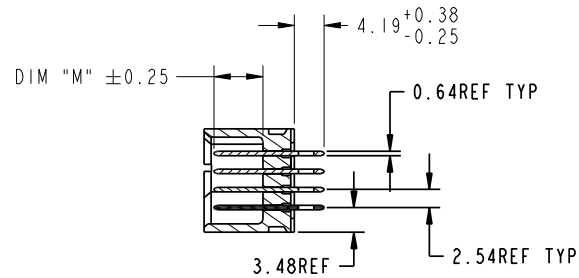
PRODUCT NUMBER
51952-002--
NOTE: 3



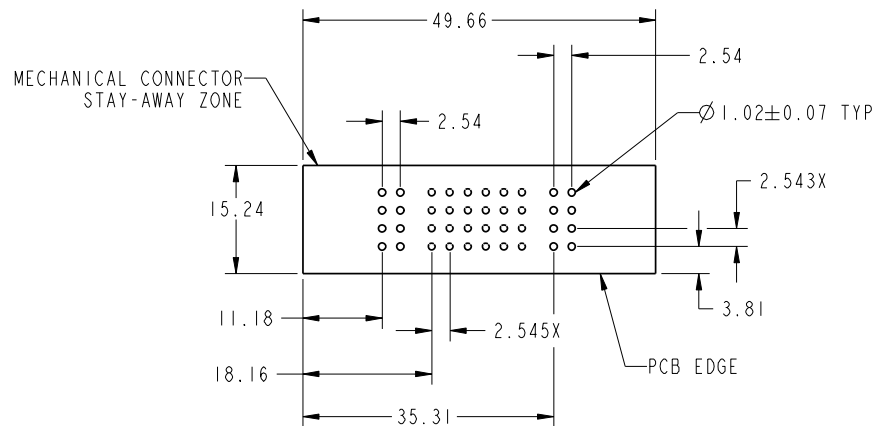
SECTION B-B



SECTION C-C



SECTION A-A



RECOMMENDED PCB LAYOUT

| | | | | | | | | | | | |
|-------------|---------|----------------|------|----------|--------------------|---------------------------------------|--|----------------|--|---------------------------|--|
| mat'l code | | | | SEE NOTE | | tolerances unless otherwise specified | | CUSTOMER | | FCI www.fciconnect.com | |
| lfr | ecr no. | dr | date | linear | 0.X ±0.3 | projection | | COPY | | title | |
| D | | | | angles | 0.XX ±0.13 | MM | | IP + 24S + IP | | PRESS FIT VERTICAL HEADER | |
| | | | | dr | 0.XXX ±0.051 | scale | | product family | | code | |
| | | | | enr | J. WITMER 9/19/01 | 1:1 | | PwrBlade | | 213 | |
| | | | | chr | J. ALLISON 9/19/01 | | | size | | sheet | |
| | | | | appd | J. ALLISON 9/19/01 | | | A | | 2 | |
| sheet index | | revision sheet | | | | | | | | | |

cage code 22526

Pro/E

Tous droits strictement reserves. Reproduction ou communication a des tiers interdite sous quelque forme que ce soit sans autorisation ecrite du proprietaire. Propriete de c FCI. Droits de reproduction FCI.



All rights strictly reserved. Reproduction or issue to third parties in any form whatever is not permitted without written authority from the proprietor. Property of FCI. Copyright FCI.

1 | 2

3 |

4

PRODUCT NUMBER
51952-002--
NOTE: 3

NOTES:

1. DIMENSIONS AND TOLERANCES ARE IN ACCORDANCE WITH ASME Y14.5M, 1994 UNLESS OTHERWISE SPECIFIED.

CONNECTOR NOTES:

- 2 HOUSING MATERIAL: UL 94 V-0 GLASS FILLED
HIGH-TEMP THERMOPLASTIC
POWER CONTACT MATERIAL: COPPER ALLOY
SIGNAL PIN MATERIAL: COPPER ALLOY
 - 3. PLATING:
51952-002 ,51952-002LF PLATING SPEC. WAS SHOWN IN THE PRINT OF 10064183.
 - 4 MANUFACTURER'S NAME, P/N, AND DATE CODE TO APPEAR ON THIS SURFACE.
 - 5. PRODUCT SPECIFICATION GS-12-149.
APPLICATION SPECIFICATION BUS-20-067.
 - 6. PACKAGED IN TRAYS.
- PCB NOTES:
- 7. ALL HOLE DIAMETERS ARE FINISHED HOLE SIZE.
 - 8. MOUNTING HOLES, WHERE APPLICABLE, ARE UNPLATED.
 - 9 $\varnothing 1.151 \pm 0.025$ DRILLED HOLES PLATED WITH
0.008 MIN SnPb OR Sn OVER .001 [0.03]
TO 0.08 Cu PLATING TO ACHIEVE
 $\varnothing 1.02 \pm .07$ HOLE.
 - 10 "DIM XXX" TO BE DETERMINED BY THE CUSTOMER.
 - 11 CONNECTOR KEEP-OUT ZONE.
12. FOR PRESS FIT APPLICATION USE FCI CAM TOOL 430169-XXX.

A

A

B

B

| | | | | | | | | | | | |
|-------------|---------|----------------|------|----------|--------------------|---------------------------------------|--|------------|--|--|--|
| mat'l code | | | | SEE NOTE | | tolerances unless otherwise specified | | CUSTOMER | | FCI www.fciconnect.com | |
| lfr | ecn no. | dr | date | linear | 0.X ±0.3 | COPY | | projection | | title | |
| D | | | | | 0.XX ±0.13 | | | | | IP + 24S + IP PRESS FIT VERTICAL HEADER | |
| | | | | angles | 0° ±2° | | | | | product family PwrBlade code 213 | |
| | | | | dr | J. WITMER 9/19/01 | | | scale 1:1 | | size A | |
| | | | | engr | J. ALLISON 9/19/01 | | | | | dwg no 51952-002 sheet 3 | |
| | | | | chr | J. ALLISON 9/19/01 | | | | | | |
| | | | | appd | J. ALLISON 9/19/01 | | | | | | |
| sheet index | | revision sheet | | | | | | | | | |

1 | 2

Pro/E

3 |

cage code 22526

4

Mouser Electronics

Authorized Distributor

Click to View Pricing, Inventory, Delivery & Lifecycle Information:

[FCI / Amphenol:](#)

[51952-002LF](#) [51952-002](#)