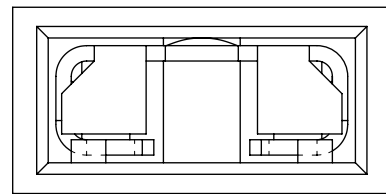
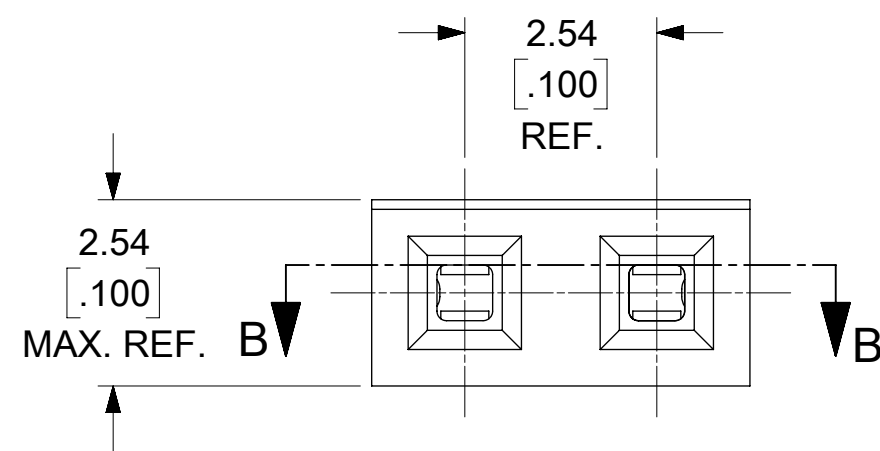
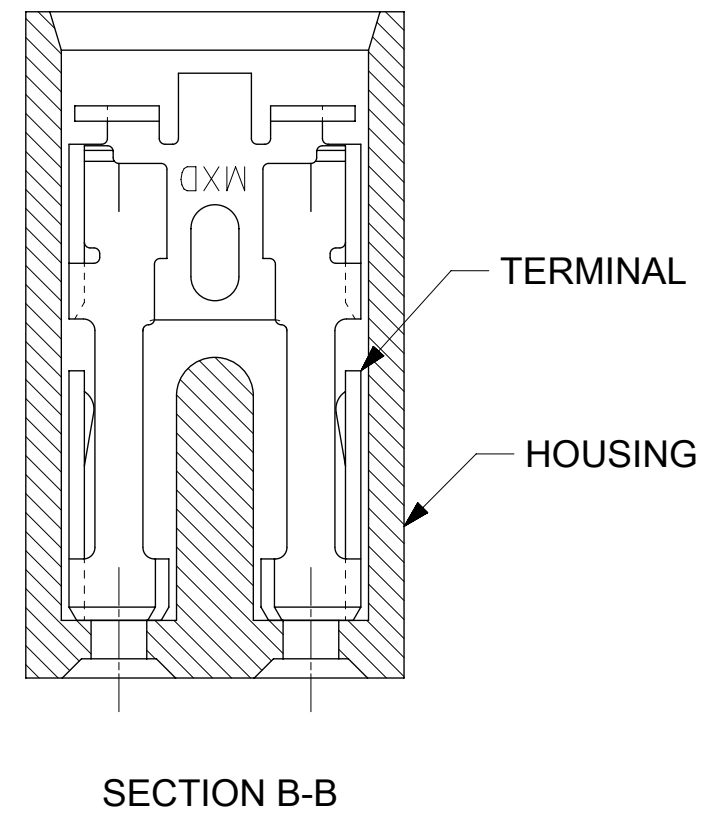
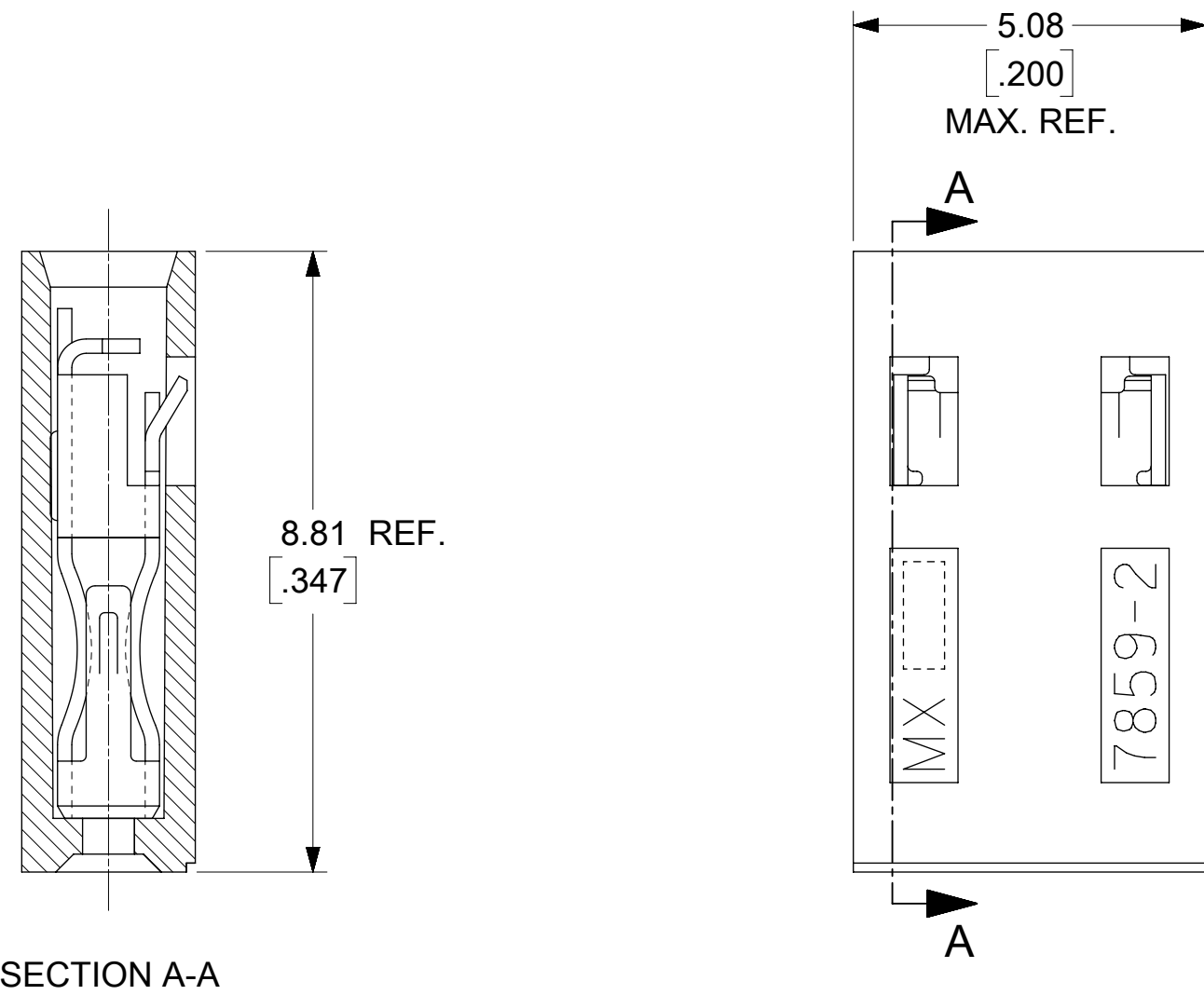


TERMINAL WITH PIN STOP



EDP NO.	ENG. NO.	FINISH
15-38-1026	A-7859-2A164	TIN OVERALL
15-29-1025	A-7859-2A554	15 GOLD
15-29-1027	A-7859-2A561	30 GOLD
7859-1027		30 GOLD



FINISH SPECIFICATION

- TIN OVERALL - 3.89µm/[0.000150] MINIMUM TIN PLATE OVER
1.27µm/[0.000050] MINIMUM NICKEL UNDERPLATE.
- 15 GOLD - 0.389µm/[0.000015] MINIMUM GOLD PLATE IN SELECT AREA OVER
1.27µm/[0.000050] MINIMUM NICKEL UNDERPLATE OVERALL.
- 30 GOLD - 0.762µm/[0.000030] MINIMUM GOLD PLATE IN SELECT AREA OVER
1.27µm/[0.000050] MINIMUM NICKEL UNDERPLATE OVERALL.

NOTES:

- MATERIAL:
HOUSING: GLASS FILLED POLYESTER; 94V-0; COLOR: BLACK
TERMINAL: PHOSPHOR BRONZE ALLOY.
- THIS PRODUCT CONFORMS TO MOLEX PRODUCT SPEC. PS-7859.
- TO BE USED WITH 0.64/[0.025] SQUARE PINS.
- MINIMUM MATING PIN LENGTH: 5.08/[0.200]
MAXIMUM MATING PIN LENGTH: 6.86/[0.270]
- PRODUCT IS PACKAGED IN BOXES PER PK-70873-0815.

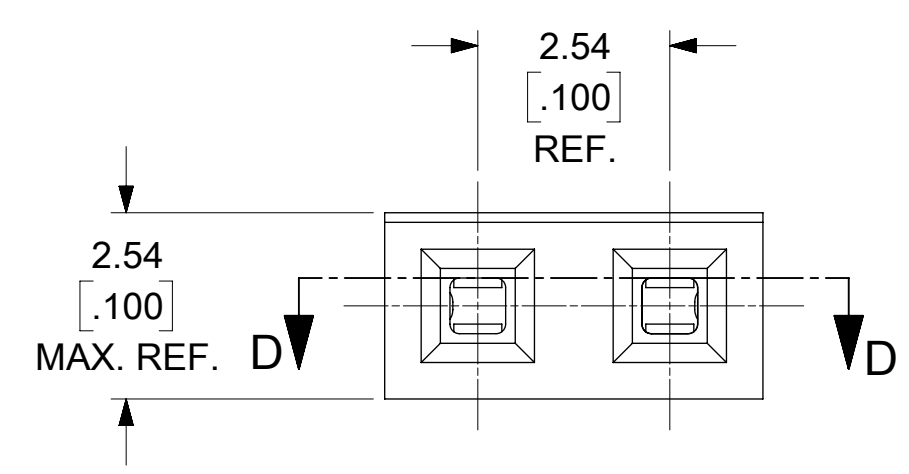
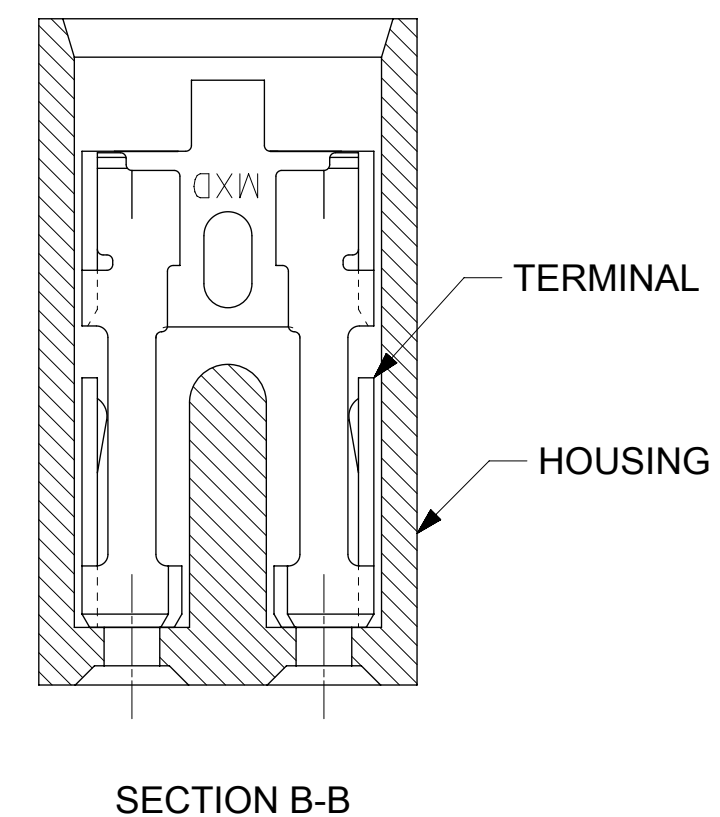
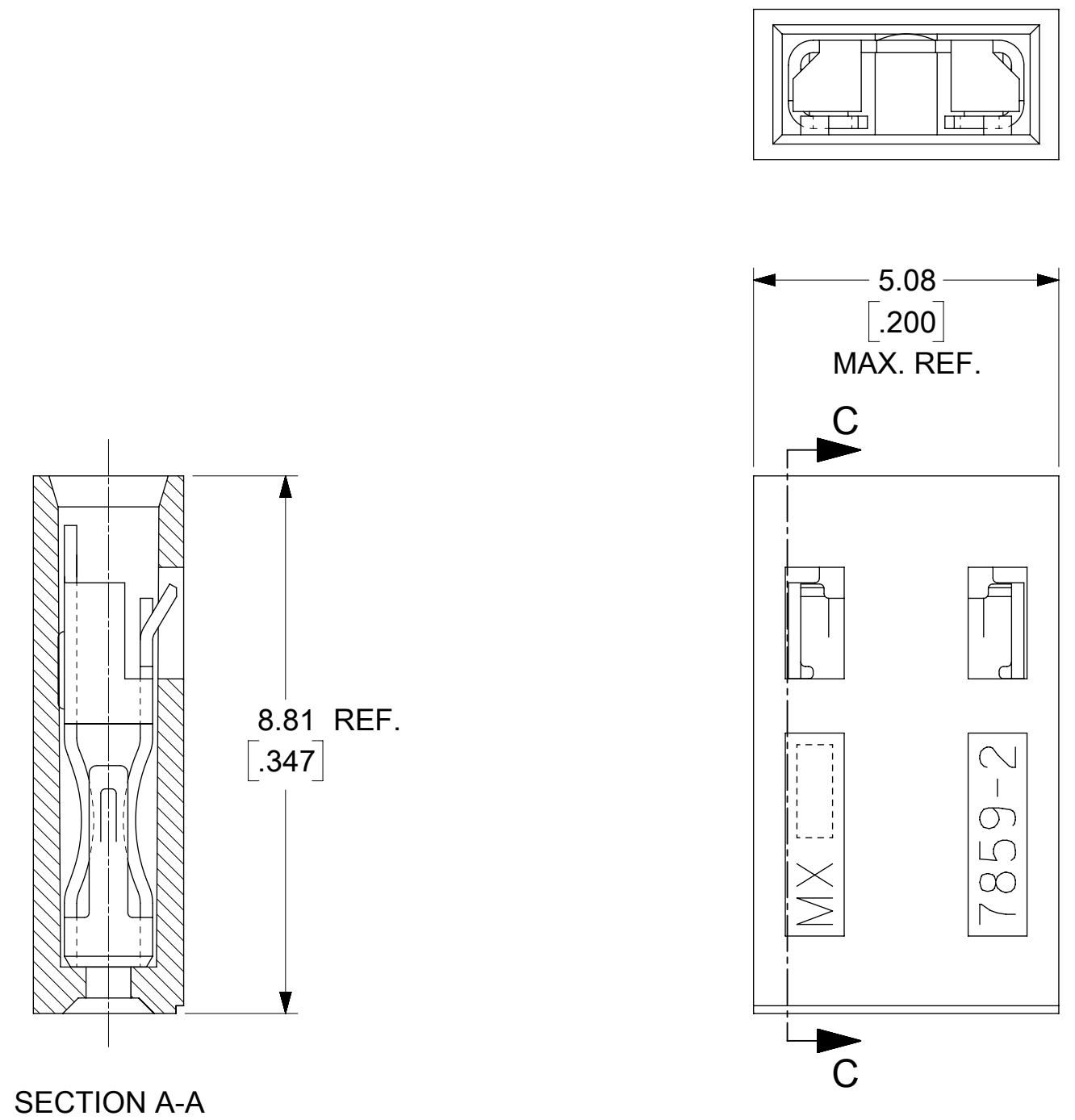
NOTE FOR LEAD FREE CONVERSION:

THE PRIMARY SHIPPING CARTON WILL BE LABELED "COMPLIANT TO RoHS DIRECTIVE 2002/95/EC AND ELV ANNEX II OF DIRECTIVE 2000/53/EC". CARTONS WITHOUT THIS LABEL MAY CONTAIN PRODUCT WITH LEAD.

SYMBOLS	THIS DRAWING CONTAINS INFORMATION THAT IS PROPRIETARY TO MOLEX ELECTRONIC TECHNOLOGIES, LLC AND SHOULD NOT BE USED WITHOUT WRITTEN PERMISSION			
DIMENSION UNITS	SCALE		CURRENT REV/DESC: MIGRATED TO NX	
∇ = 0	MM/INCH	10:1		
∇ = 0	GENERAL TOLERANCES (UNLESS SPECIFIED)			
∇ = 0	MM	INCH	EC NO: 614890	
S = 0	4 PLACES ±	±	DRWN: NMANE02 2019/04/02	
∇ = 0	3 PLACES ±	± 0.005	CHK'D: ISHWARG 2019/04/02	
∇ = 0	2 PLACES ±	± 0.13 ± 0.01	APPR: ISHWARG 2019/04/02	
∇ = 0	1 PLACE ±	± 0.25 ±	INITIAL REVISION:	
∇ = 0	0 PLACES ±	±	DRWN: BSMART 2004/05/05	
∇ = 0	ANGULAR TOL ± 0.5°		APPR: SMILLER 2004/05/18	
∇ = 0	DRAFT WHERE APPLICABLE MUST REMAIN WITHIN DIMENSIONS	THIRD ANGLE PROJECTION	DRAWING	SERIES
			C-SIZE	7859
	DOCUMENT STATUS	P1	RELEASE DATE	2019/04/02 16:12:36
	DOCUMENT NUMBER	DOC TYPE	DOC PART	REVISION
	SDA-7859-2AXXXN	PSD	001	D2
	MATERIAL NUMBER	CUSTOMER	SHEET NUMBER	
	SEE CHART	GENERAL MARKET	1 OF 2	

TERMINAL WITH OUT PIN STOP

EDP NO.	ENG. NO.	FINISH
15-38-1024	A-7859-2164	TIN OVERALL
15-29-1024	A-7859-2554	15 GOLD
15-29-1026	A-7859-2561	30 GOLD
7859-1024		TIN OVERALL



FINISH SPECIFICATION

TIN OVERALL - 3.89µm/[0.000150] MINIMUM TIN PLATE OVER
 1.27µm/[0.000050] MINIMUM NICKEL UNDERPLATE.
 15 GOLD - 0.389µm/[0.000015] MINIMUM GOLD PLATE IN SELECT AREA OVER
 1.27µm/[0.000050] MINIMUM NICKEL UNDERPLATE OVERALL.
 30 GOLD - 0.762µm/[0.000030] MINIMUM GOLD PLATE IN SELECT AREA OVER
 1.27µm/[0.000050] MINIMUM NICKEL UNDERPLATE OVERALL.

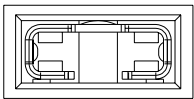
NOTES:

- MATERIAL:
 HOUSING: GLASS FILLED POLYESTER; 94V-0; COLOR: BLACK
 TERMINAL: PHOSPHOR BRONZE ALLOY.
- THIS PRODUCT CONFORMS TO MOLEX PRODUCT SPEC. PS-7859.
- TO BE USED WITH 0.64/[0.025] SQUARE PINS.
- MINIMUM MATING PIN LENGTH: 5.08/[0.200]
 MAXIMUM MATING PIN LENGTH: 6.86/[0.270]
- PRODUCT IS PACKAGED IN BOXES PER PK-70873-0815.

NOTE FOR LEAD FREE CONVERSION:
 THE PRIMARY SHIPPING CARTON WILL BE LABELED "COMPLIANT TO RoHS DIRECTIVE 2002/95/EC AND ELV ANNEX II OF DIRECTIVE 2000/53/EC". CARTONS WITHOUT THIS LABEL MAY CONTAIN PRODUCT WITH LEAD.

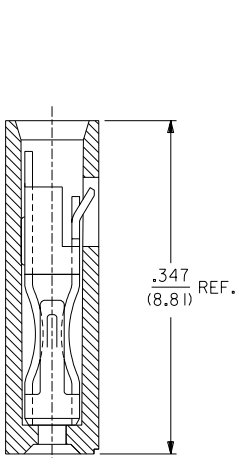
SYMBOLS		THIS DRAWING CONTAINS INFORMATION THAT IS PROPRIETARY TO MOLEX ELECTRONIC TECHNOLOGIES, LLC AND SHOULD NOT BE USED WITHOUT WRITTEN PERMISSION	
DIMENSION UNITS	SCALE	CURRENT REV DESC: MIGRATED TO NX	
∇ = 0	mm	10:1	EC NO: 614890 DRWN: NMANE02 2019/04/02 CHK'D: ISHWARG 2019/04/02 APPR: ISHWARG 2019/04/02 INITIAL REVISION: DRWN: BSMART 2004/05/05 APPR: SMILLER 2004/05/18
∇ = 0	GENERAL TOLERANCES (UNLESS SPECIFIED)		
∇ = 0	MM	INCH	
∇ = 0	4 PLACES	±	PRODUCT CUSTOMER DRAWING DOCUMENT NUMBER: SDA-7859-2AXXXN DOC TYPE: PSD DOC PART: 001 REVISION: D2
∇ = 0	3 PLACES	±	
∇ = 0	2 PLACES	± 0.13	MATERIAL NUMBER: SEE CHART CUSTOMER: GENERAL MARKET SHEET NUMBER: 2 OF 2
∇ = 0	1 PLACE	± 0.25	
∇ = 0	0 PLACES	±	
∇ = 0	ANGULAR TOL	± 0.5 °	
∇ = 0	DRAFT WHERE APPLICABLE MUST REMAIN WITHIN DIMENSIONS	THIRD ANGLE PROJECTION	DRAWING: C-SIZE SERIES: 7859

EDP NO.	ENG NO.	FINISH
15-38-1024	A-7859-2164	TIN OVERALL
15-29-1024	A-7859-2554	15 GOLD
15-29-1026	A-7859-2561	30 GOLD

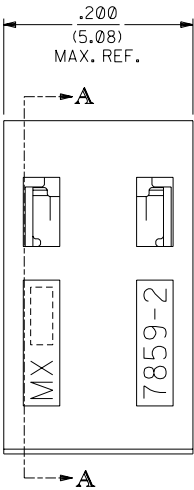


PART IDENTIFICATION:

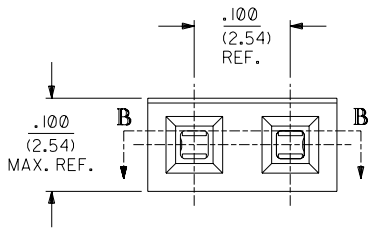
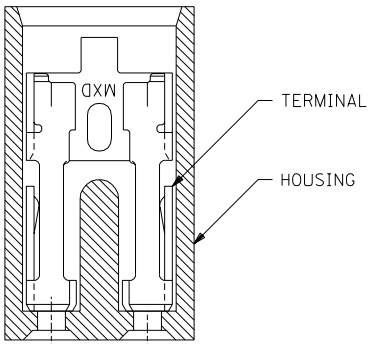
A-7859-2***
 └── PLATING SPECIFICATION



SECTION A-A



SECTION B-B



NOTES:

1. THIS PRODUCT CONFORMS TO MOLEX PRODUCT SPEC. PS-7859.
2. TO BE USED WITH .025/(0.64) SQUARE PINS.
3. MINIMUM MATING PIN LENGTH: .200/(5.08)
4. PRODUCT IS PACKAGED IN BOXES PER PK-70873-0815

FINISH SPECIFICATION

TIN OVERALL - .000150 MINIMUM TIN PLATE OVER
 .000050 MINIMUM NICKEL UNDERPLATE.
 15 GOLD - .000015 MINIMUM GOLD PLATE IN SELECT AREA OVER
 .000050 MINIMUM NICKEL UNDERPLATE OVERALL.
 30 GOLD - .000030 MINIMUM GOLD PLATE IN SELECT AREA OVER
 .000050 MINIMUM NICKEL UNDERPLATE OVERALL.

MATERIAL:

HOUSING: GLASS FILLED POLYESTER; 94V-0; COLOR: BLACK.
 TERMINAL: PHOSPHOR BRONZE ALLOY

NOTE FOR LEAD FREE CONVERSION:

THE PRIMARY SHIPPING CARTON WILL BE LABELED "COMPLIANT TO ROHS DIRECTIVE 2002/95/EC AND ELV ANNEX II OF DIRECTIVE 2000/53/EC". CARTONS WITHOUT THIS LABEL MAY CONTAIN PRODUCT WITH LEAD.

7859

D	LEAD FREE CONV ECN UCP2004-2133 RKADAMS 04/04/27
C1	ADDED PKG. SPEC. PER ECN U10786 WHETSTON 97/2/7
C	CHANGED MATERIAL PER ECR #U51214 95/06/02 CAC
B	REVISED ENG. NOS. PER ECR # U31581 10/26/93 REED
A	RELEASED PER ECR # U30372 03/11/93 REED
3	REVISE GOLD PLTG. PER ECR # U12055 10/18/91 AAB
2	REVISE TERM. PLTG. PER ECR # U11096 06/18/91 AAB
1	*X* RELEASE PER ECR # U10445 02/07/91 AAB

DIMENSIONS SHOWN (METRIC) INCH		UNLESS OTHERWISE SPECIFIED TOLERANCES: ANGULAR ± 1/2°		REVISIONS	
INCH	METRIC	FILE NAME	SHEET NO.	DATE	
3 PLACE ± .005	---	57859X1	1 OF 1	02/07/91	
2 PLACE ± .01	± 0.13	MOLEX INCORPORATED U.S.A. 60532			
1 PLACE ---	± 0.25	SALES ASSY - SHUNT 2-CIRCUIT TERMINAL W/OPEN END			
DRAFT WHERE APPLICABLE MUST REMAIN WITHIN DIMENSIONS		SEE CHART		SDA-7859-2***N	
DRWG. BY: AAB	CHK'D. BY:	MFG, SH, REV. LTR.		REVISE ONLY ON CAD SYSTEM	
APP'D. BY: MJM	SCALE: 10: 1	THIS DRAWING CONTAINS INFORMATION THAT IS PROPRIETARY TO MOLEX INC. AND SHOULD NOT BE USED WITHOUT WRITTEN PERMISSION.		DA C	