

**PLEASE CHECK WWW.MOLEX.COM FOR LATEST PART INFORMATION**

**Part Number:** [171692-0104](#)  
**Status:** **Active**  
**Overview:** [Mega-Fit Power Connectors](#)  
**Description:** Mega-Fit™ Receptacle Housing, Dual Row, 4 Circuit, UL 94 V-0, Bag

**Documents:**

<a href="#">3D Model</a>	<a href="#">Test Summary TS-170001-001 (PDF)</a>
<a href="#">Drawing (PDF)</a>	<a href="#">Test Summary TS-76823-100 (PDF)</a>
<a href="#">Product Specification PS-76823-100 (PDF)</a>	<a href="#">RoHS Certificate of Compliance (PDF)</a>

**Agency Certification**

CSA	LR19980
UL	E29179

**General**

Product Family	Crimp Housings
Series	<a href="#">171692</a>
Application	Power, Wire-to-Board, Wire-to-Wire
Overview	<a href="#">Mega-Fit Power Connectors</a>
Product Name	Mega-Fit™
UPC	887191246857

**Physical**

Circuits (maximum)	4
Circuits Detail	4
Color - Resin	Black
Flammability	94V-0
Gender	Male
Glow-Wire Compliant	No
Lock to Mating Part	Yes
Material - Resin	PBT
Net Weight	1.910/g
Number of Rows	2
Packaging Type	Bag
Panel Mount	No
Pitch - Mating Interface	5.70mm
Pitch - Termination Interface	5.70mm
Polarized to Mating Part	Yes
Temperature Range - Operating	-40°C to +105°C

**Electrical**

Current - Maximum per Contact	23A
-------------------------------	-----

**Material Info**

**Reference - Drawing Numbers**

Product Specification	PS-76823-100
Sales Drawing	SD-171692-0100
Test Summary	TS-170001-001, TS-76823-100

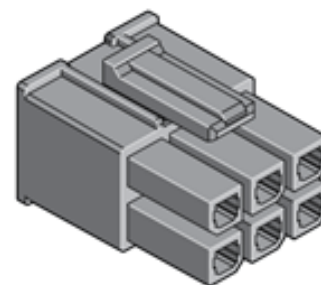


image - Reference only

Series

**EU RoHS**

**ELV and RoHS Compliant**  
**REACH SVHC Contains SVHC: No**  
**Low-Halogen Status**  
**Not Low-Halogen**

**China RoHS**



**Need more information on product environmental compliance?**

Email [productcompliance@molex.com](mailto:productcompliance@molex.com)  
 For a multiple part number RoHS Certificate of Compliance, [click here](#)

Please visit the [Contact Us](#) section for any non-product compliance questions.

**Search Parts in this Series**

[171692Series](#)

**Mates With**

Mega-Fit™ Header [76825](#) , [76829](#) , [172064](#) , [172065](#)

**Use With**

Mega-Fit™ Crimp Terminals, [172063](#)