

This drawing involves proprietary design rights of Tyco Electronics Corporation, and all design, manufacture, reproduction, use and sale rights regarding the same are expressly reserved. It is submitted for a specific purpose and the recipient by accepting this drawing, assumes custody and control and agrees to take reasonable precautions; (a) that this drawing will not be copied and reproduced, in whole or in part, or its contents revealed in any manner, or to any person except to meet the purpose for which it was delivered and (b) that any special features peculiar to this design will not be incorporated in other projects without the expressed written permission of Tyco Electronics Corporation.

REVISIONS			
EC	REV	DESCRIPTION	DATE
—	A	NEW RELEASE	06/28/05

6. MODULE INFORMATION

CONNECTOR	TYCO PART NUMBER	CATALOG MODULE #	QTY	SIZE NO.	CONTACT QTY	MATING PIN	MAX. CURRENT (PER CONTACT)	CONTACT SPACING	VOLTAGE RATING*
SOCKET	1766687-1	FP0250	6	8	6	1.25 X 7.00 [.049 X .276]	35 AMPERES	7.50 [.2953]	250 VOLTS
		FP0254	4	8	4	1.25 X 7.00 [.049 X .276]	35 AMPERES	12.00 [.4724]	600 VOLTS
		FP0401	2	22	48	.64 [.025] SQ.	3 AMPERES	2.50 [.0984]	125 VOLTS
		FP0503	2	STRAIGHT GUDE PIN					
		FP0500	1	LEFT MOUNTING FLANGE					
		FP0501	1	RIGHT MOUNTING FLANGE					

NOTES: UNLESS OTHERWISE SPECIFIED.

1. PART NUMBER CHANGES AND OR DESIGN CHANGES AFFECTING ITEM INTERCHANGEABILITY REQUIRE PRIOR ELCON APPROVAL AND AUTHORIZATION BY REVISION TO THIS DRAWING.
2. MATERIALS:

INSULATORS: THERMOPLASTIC, GLASS REINFORCED, COLOR-BLACK, UL94V-0 FLAMMABILITY RATED.

COMPLIANT SIGNAL PIN: PHOSPHOR BRONZE ALLOY.

POWER CONTACTS: COPPER ALLOY.

GUIDE PIN: BRASS COPPER ALLOY.
3. FINISHES:

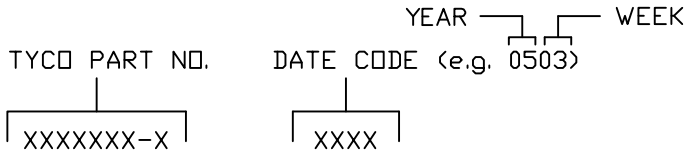
CONTACTS: GOLD PLATED PER MIL-G-45204 TYPE II, CLASS 0, .000030" MIN. THICK OVER NICKEL PER QQ-N-290, CLASS 2, .000040" MIN. THICKNESS.

TERMINALS: TIN PLATED, MATTE FINISH .000040" MIN. THICKNESS.

GUIDE PIN: NICKEL PLATED PER AMS 2404.

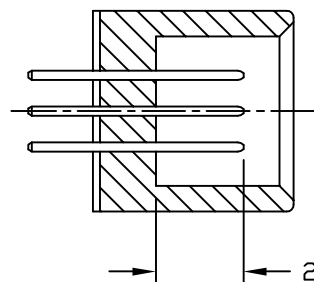
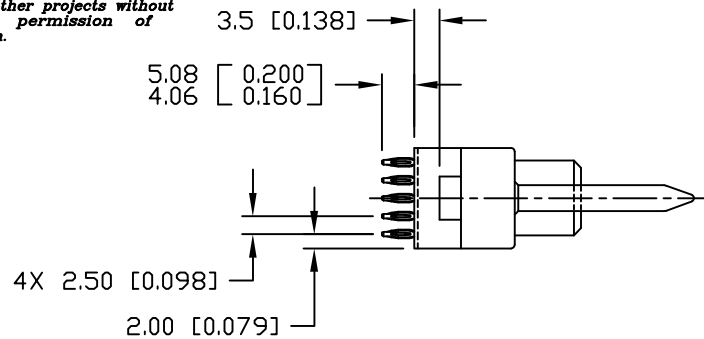
4 MOUNTING FLANGES ACCEPT M3 OR NO. 4 SCREWS, (USER SUPPLIED)

5. ITEMS PROVIDED TO THIS SPECIFICATION TO BE PERMANENTLY IDENTIFIED PER THE FOLLOWING IDENTIFIER:

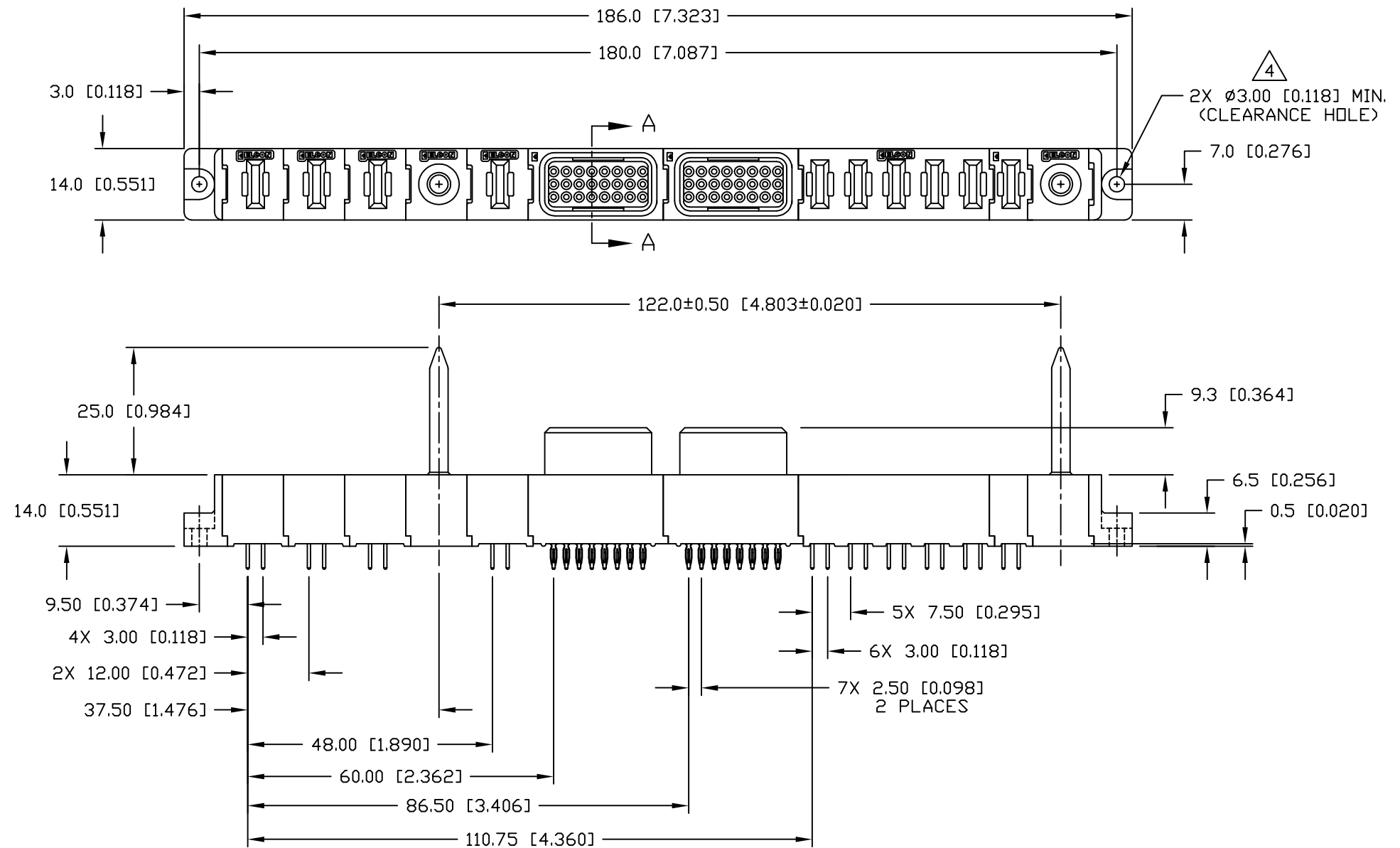


<div>← MM OR MM [INCH]</div> <div>THIRD ANGLE PROJECTION</div> <div>UNLESS OTHERWISE SPECIFIED DIMENSIONS ARE IN METRIC [INCHES]</div> <div>TOLERANCES</div> <div>ANGLES ± .5°</div> <div>DECIMALS</div> <div>.XX ± .25 [.010]</div> <div>.X ± .5 [.020]</div>	DRAWN	DATE	<div><b>tyco</b> Tyco Electronics Corporation</div> <div><b>Electronics</b> Menlo Park, Ca 94025</div> <div><b>ELCON</b></div>	
	R. F. A.	06/03/05		
	CHECKED			
	APPROVED		TITLE	
	APPROVED			
D. CHAU	06/28/05	SIZE	DWG NUMBER	REV.
DCA APPROVED	06/29/05	B	C = 1766687	A
M. ALIM		ACAD FILE NUMBER C1766687A.DWG		
DWG SCALE 1 = 1			SH 1 OF 4	

This drawing involves proprietary design rights of Tyco Electronics Corporation, and all design, manufacture, reproduction, use and sale rights regarding the same are expressly reserved. It is submitted for a specific purpose and the recipient by accepting this drawing, assumes custody and control and agrees to take reasonable precautions; (a) that this drawing will not be copied and reproduced, in whole or in part, or its contents revealed in any manner, or to any person except to meet the purpose for which it was delivered and (b) that any special features peculiar to this design will not be incorporated in other projects without the expressed written permission of Tyco Electronics Corporation.



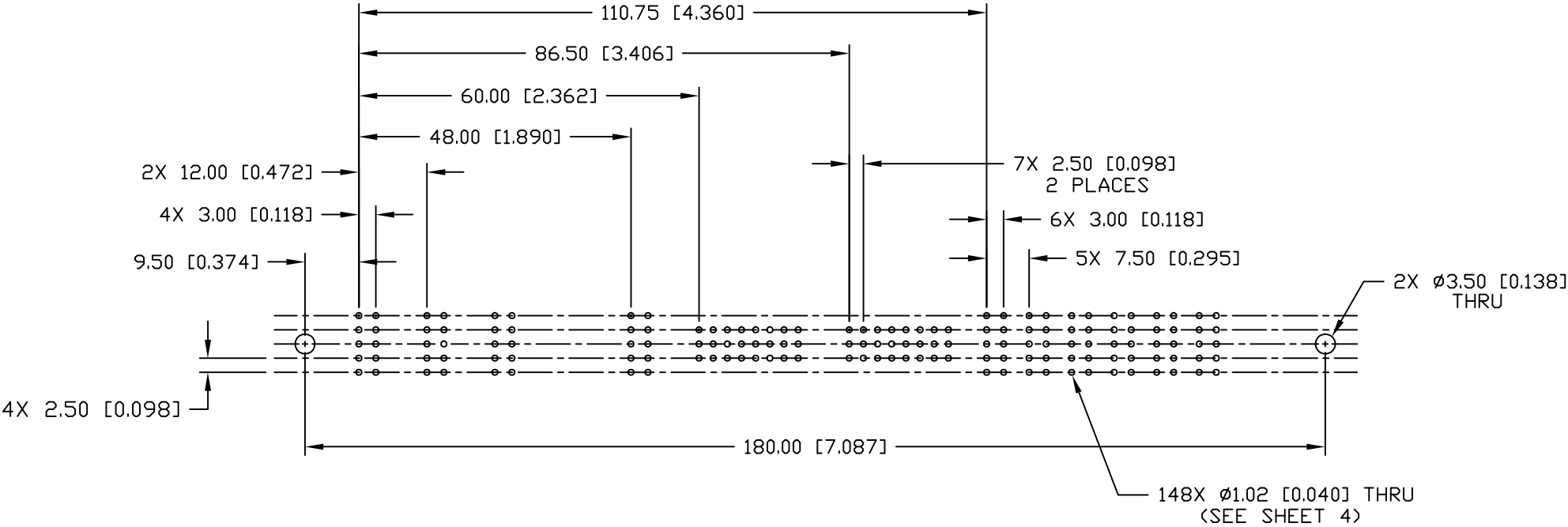
SECTION A-A  
2 PLACES  
GENDER CHANGER NOT SHOWN FOR CLARITY



<div>MM INCH</div> <div>OR MM [INCH]</div> <div>THIRD ANGLE PROJECTION</div> <div>UNLESS OTHERWISE SPECIFIED DIMENSIONS ARE IN METRIC [INCHES]</div> <div>TOLERANCES</div> <div>ANGLES ± .5°</div> <div>DECIMALS</div> <div>.XX ± .25 [.010]</div> <div>.X ± .5 [.020]</div>	DRAWN R. F. A.	DATE 06/03/05	<div><div>tyco</div><div>Electronics</div></div> <div>Tyco Electronics Corporation Menlo Park, Ca 94025</div> <div>ELCON</div>		
	CHECKED		TITLE CONNECTOR, SOCKET, STRAIGHT COMPLIANT TAILS FLATPAQ		
	APPROVED		SIZE B	DWG NUMBER C = 1766687	REV. A
	APPROVED D. CHAU	06/28/05	ACAD FILE NUMBER C1766687A.DWG		
DCA APPROVED M. ALIM		06/29/05	DWG SCALE 1 = 1		SH 2 OF 4

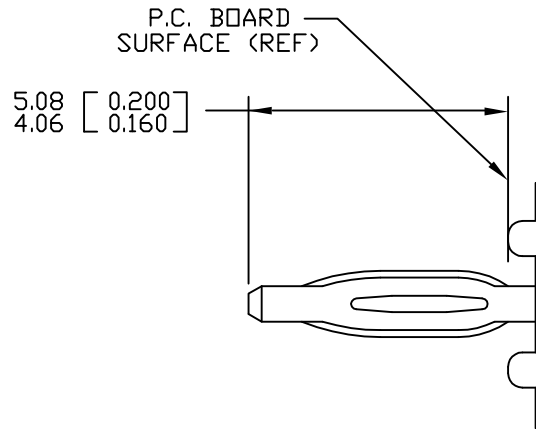
This drawing involves proprietary design rights of Tyco Electronics Corporation, and all design, manufacture, reproduction, use and sale rights regarding the same are expressly reserved. It is submitted for a specific purpose and the recipient by accepting this drawing, assumes custody and control and agrees to take reasonable precautions; (a) that this drawing will not be copied and reproduced, in whole or in part, or its contents revealed in any manner, or to any person except to meet the purpose for which it was delivered and (b) that any special features peculiar to this design will not be incorporated in other projects without the expressed written permission of Tyco Electronics Corporation.

REVISIONS			
EC	REV	DESCRIPTION	DATE
		SEE SHEET 1	



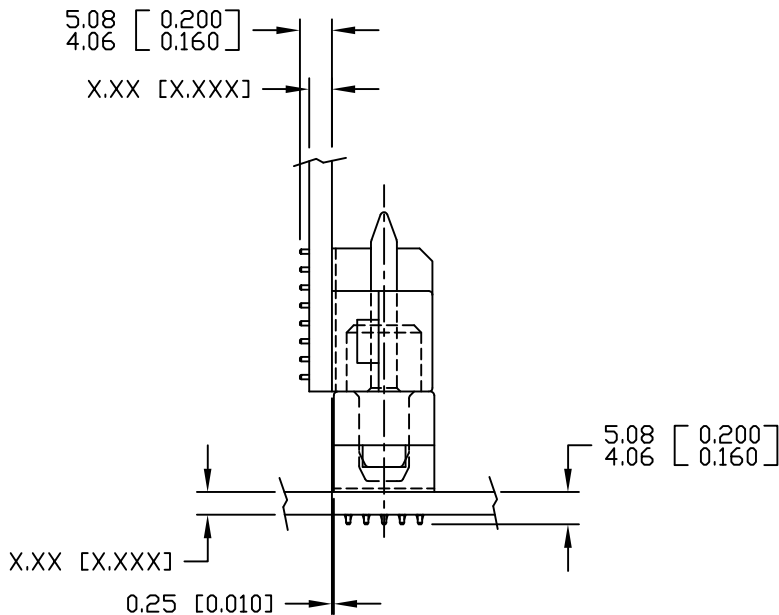
<div>← MM INCH → OR MM [INCH]</div> <div></div> <div>THIRD ANGLE PROJECTION</div> <div>UNLESS OTHERWISE SPECIFIED DIMENSIONS ARE IN METRIC [INCHES]</div> <div>TOLERANCES</div> <div>ANGLES ± .5°</div> <div>DECIMALS</div> <div>.XX ± .25 [.010]</div> <div>.X ± .5 [.020]</div>	DRAWN R. F. A.	DATE 06/03/05	<div> Tyco Electronics Corporation Menlo Park, Ca 94025</div> <div></div> <div>TITLE CONNECTOR, SOCKET, STRAIGHT COMPLIANT TAILS FLATPAQ</div>		
	CHECKED				
	APPROVED				
	APPROVED D. CHAU	06/28/05	SIZE B	DWG NUMBER C = 1766687	REV. A
ACAD FILE NUMBER C1766687A.DWG				DWG SCALE 1 = 1	SH 3 OF 4

This drawing involves proprietary design rights of Tyco Electronics Corporation, and all design, manufacture, reproduction, use and sale rights regarding the same are expressly reserved. It is submitted for a specific purpose and the recipient by accepting this drawing, assumes custody and control and agrees to take reasonable precautions; (a) that this drawing will not be copied and reproduced, in whole or in part, or its contents revealed in any manner, or to any person except to meet the purpose for which it was delivered and (b) that any special features peculiar to this design will not be incorporated in other projects without the expressed written permission of Tyco Electronics Corporation.

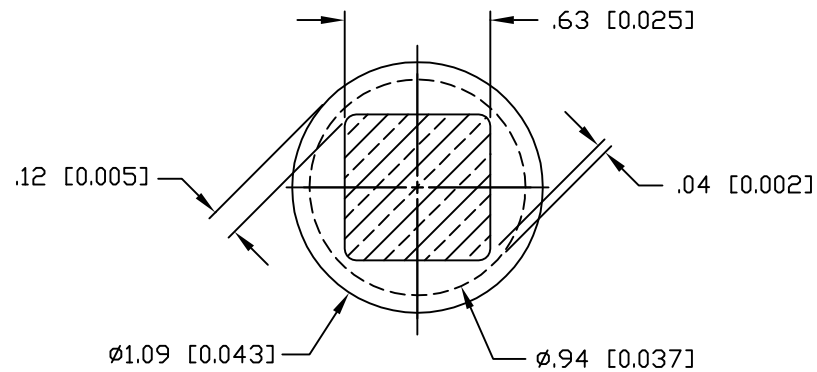


### COMPLIANT PIN DETAIL INSERTION/EXTRACTION FORCES

MAXIMUM PUSH-IN: 133.3N PER PIN  
[30 LBS]  
MINIMUM PUSH-OUT: 44.4N PER PIN  
[10 LBS]



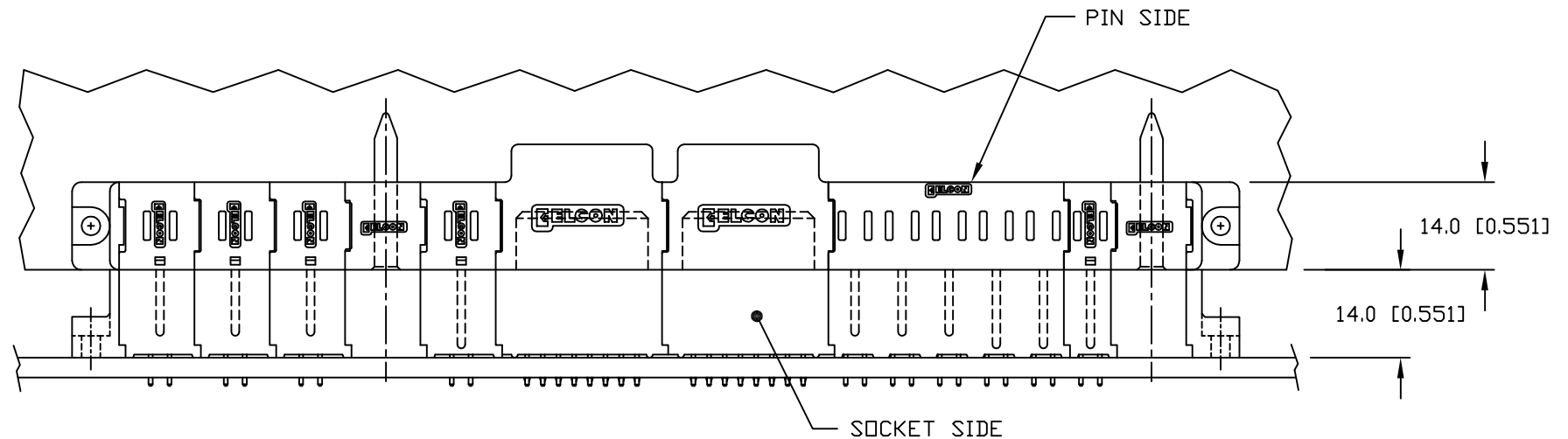
### MATED CONDITION



### SOLDER TERMINATION AREA

#### RECOMMENDED PRINTED CIRCUIT HOLE

FINISHED HOLE: Ø1.02 [0.040] ±.08 [0.003]  
DRILLED HOLE: Ø1.15 [0.0453] ±.013 [0.0005]  
COPPER PLATE: .025 [0.0010] MINIMUM (PER SURFACE)  
TIN PLATE: .008 [0.0003] MINIMUM (PER SURFACE)



<div>MM INCH</div> <div>OR MM [INCH]</div> <div>THIRD ANGLE PROJECTION</div> <div>UNLESS OTHERWISE SPECIFIED DIMENSIONS ARE IN METRIC [INCHES]</div> <div>TOLERANCES</div> <div>ANGLES ± .5°</div> <div>DECIMALS</div> <div>.XX ± .25 [.010]</div> <div>.X ± .5 [.020]</div>	DRAWN R. F. A.	DATE 06/03/05	<div><div>tyco</div><div>Electronics</div></div> <div>Tyco Electronics Corporation Menlo Park, Ca 94025</div> <div>ELCON</div>		
	CHECKED		TITLE		
	APPROVED		USER INFORMATION COMPLIANT TAIL TERMINATION AND MATED CONDITION		
	APPROVED D. CHAU	06/28/05	SIZE B	DWG NUMBER C = 1766687	REV. A
ACAD FILE NUMBER C1766687A.DWG				DWG SCALE 1 = 1	SH 4 OF 4

# Mouser Electronics

Authorized Distributor

Click to View Pricing, Inventory, Delivery & Lifecycle Information:

[TE Connectivity:](#)

[1766687-1](#)