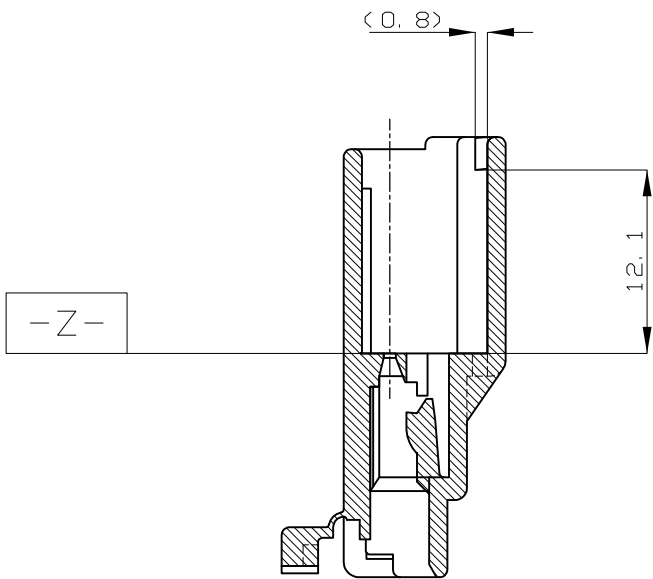
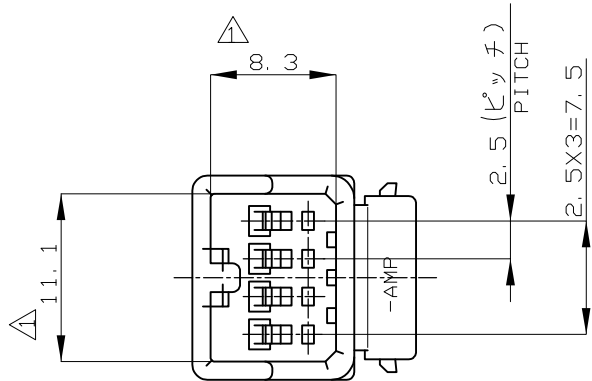
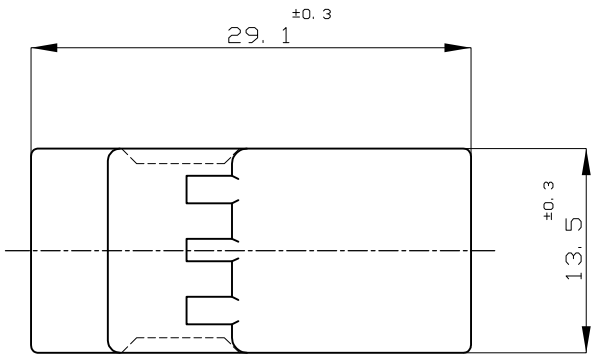
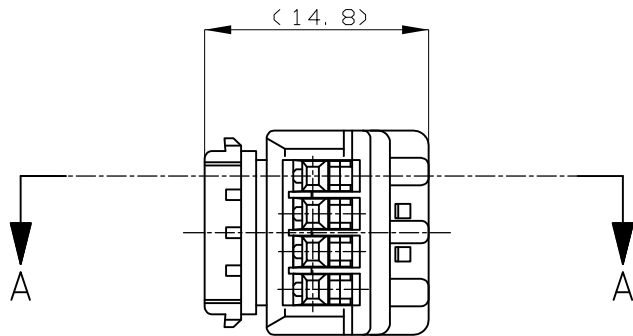
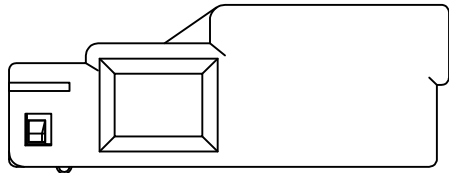
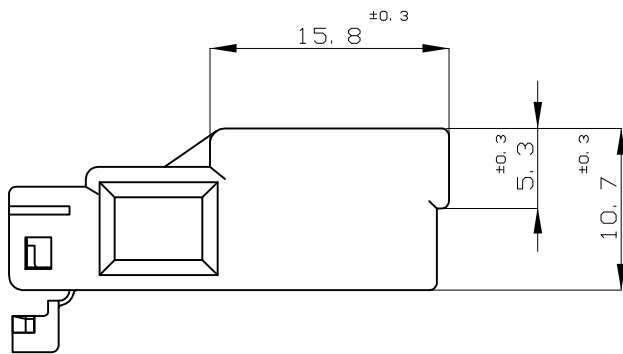


LOC	DIST	REVISIONS					
		P	LTR	DESCRIPTION	DATE	DWN	APVD
J	—		B2	REVISED PER ECO-11-005140	28MAR11	RK	HMR



A-A



二重ロック時
DOUBLE LOCKED

- △ TO BE MEASURED WITHIN 2mm FROM -Z-
1. THE MEATING PLUG HOUSING PART NUMBER; 174966
 2. APPLICABLE CONTACT PART NUMBER, 173682

- △ -Z- 面から2mmの範囲で測定
1. 相手側ハウジング型番；174966
 2. 適用端子型番、 173682

青 (BLUE)	174967-5
緑 (GREEN)	174967-4
黒 (BLACK)	174967-2
色 (COLOR)	製品型番 (PART NO.)

TOLERANCE UNLESS OTHERWISE SPECIFIED: 一般公差	
0 < x ≤ 10	: ±0.2
10 < x ≤ 30	: ±0.25
30 < x ≤ 100	: ±0.3
ANGLE ; 角度	: ±3°

THIS DRAWING IS A CONTROLLED DOCUMENT.		DWN M.SUGAWARA 02AUG06			
DIMENSIONS: 単位: 耗 mm		CHK K.BETSUI 02AUG06		APVD K.BETSUI 02AUG06	
TOLERANCES UNLESS OTHERWISE SPECIFIED: 一般公差		PRODUCT SPEC 製品規格 108-5352		APPLICATION SPEC 取付適用規格 —	
MATERIAL 材料 PBT		WEIGHT —		CUSTOMER DRAWING	
FINISH 仕上 —		SCALE 尺度 2:1		SHEET 1 OF 1	
RESTRICTED TO —		REV B2		DRAWING NO 番号 A300779C-174967	



4POSITION CAP HOUSING
040SERIES MULTI-LOCK CONNECTOR

Mouser Electronics

Authorized Distributor

Click to View Pricing, Inventory, Delivery & Lifecycle Information:

[TE Connectivity:](#)

[174967-4](#)