

5

4

3

2

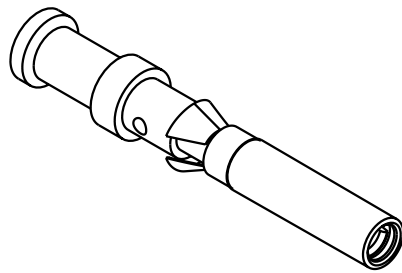
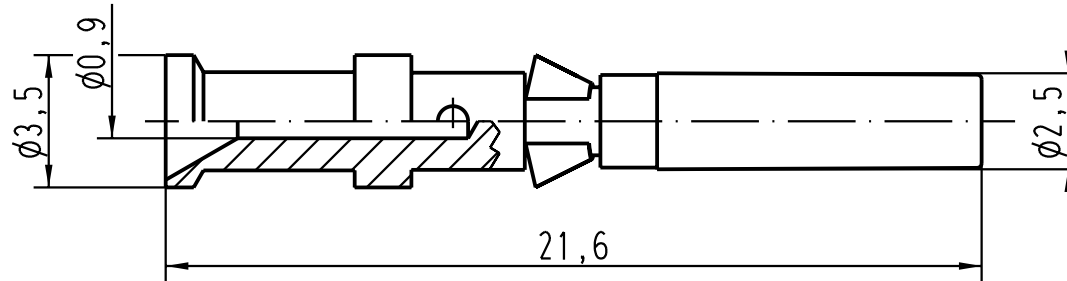
1

D



C

B

A



Leiterquerschnitt/ wire gauge: 0,14-0,37mm²/ AWG 26-22

 All Dimensions in mm Original Size DIN A 4		Techn. Character.			Nicht tolerierte Masse/ Free size tolerances	
			Dat.	Name	Massestab/ Scale 5:1	R15-Kontaktbuchse Crimpkontakt Fe) vergoldet/ crimp contact (Fe) gold plated
		Detail.	24.09.03	Loe.		
		Insp.		KR		
		Stand.				
410702		HARTING Electric GmbH & Co. KG			TB 09 15 000 6271	Blatt/ page
Mod.	Dat.	Name	D-32339 Espelkamp			

Mouser Electronics

Authorized Distributor

Click to View Pricing, Inventory, Delivery & Lifecycle Information:

[HARTING:](#)

[09150006271](#)