

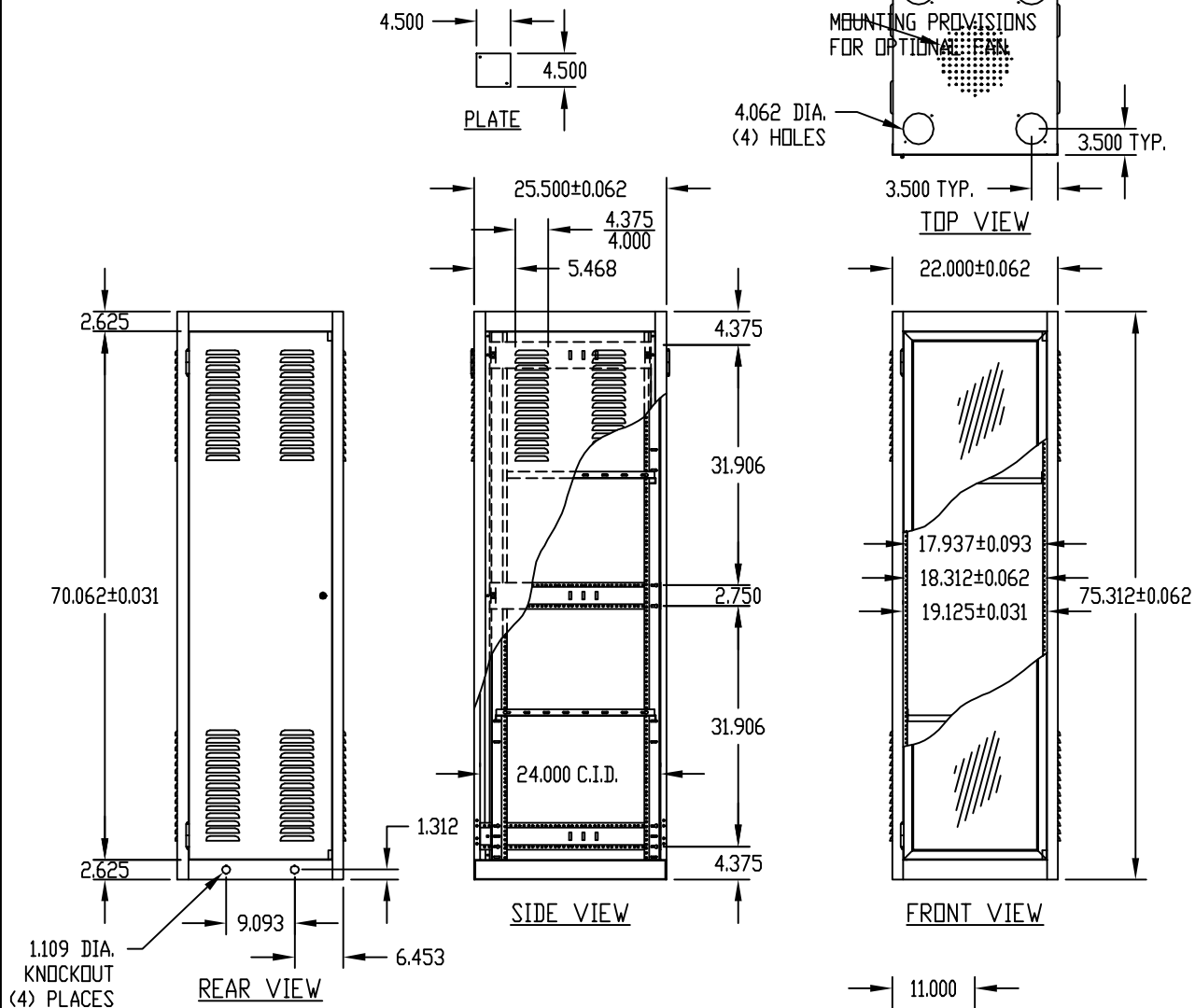
PART NAME	DATA COM CABINET	PART No.	DC-8002
-----------	------------------	----------	---------

# FINISH:

FRAME ASSEMBLY, SIDES, PLATES,  
 REAR DOOR AND REAR  
 DOOR HINGES \_\_\_\_\_ SAND TEXTURE  
 \_\_\_\_\_ ROYAL BLUE TEXTURE  
 \_\_\_\_\_ BLACK TEXTURE  
 PLEXIGLAS DOOR HINGES \_\_\_\_\_ METALLIC GRAY  
 PANEL MOUNTING RAILS, SHELVES  
 AND DOOR STOPS \_\_\_\_\_ SMOOTH BLACK  
 PLEXIGLAS DOOR FRAME \_\_\_\_\_ CLEAR ANODIZED  
 PLEXIGLAS PANEL \_\_\_\_\_ SMOKE GRAY

# MATERIAL:

SIDES AND REAR DOOR \_\_\_\_\_ 20 GA. STEEL  
 REAR DOOR STIFFENER \_\_\_\_\_ 18 GA. STEEL  
 TOP, BOTTOM, RAIL SUPPORTS, SHELVES, PLATES  
 AND DOOR STOPS \_\_\_\_\_ 16 GA. STEEL  
 VERTICAL RAILS \_\_\_\_\_ 14 GA. STEEL  
 PANEL MOUNTING RAILS \_\_\_\_\_ 12 GA. STEEL  
 PLEXIGLAS DOOR FRAME \_\_\_\_\_ ALUMINUM EXTRUSION  
 PLEXIGLAS PANEL \_\_\_\_\_ 3/16" THICK



# NOTES:

- ① PANEL MOUNTING RAILS TAPPED #10-32 ON E.I.A. UNIVERSAL SPACING AND ARE FULLY ADJUSTABLE.
- ② MOUNTING HOLES PIERCED IN BASE FOR #RC-7758 CASTERS.
- ③ SHELVES SHIPPED UNASSEMBLED, PACKED IN RACK.
- ④ LOAD RATING: 1200 LBS. MAX.

# Mouser Electronics

Authorized Distributor

Click to View Pricing, Inventory, Delivery & Lifecycle Information:

[Bud Industries:](#)

[DC-8002-BT](#) [DC-8002-RB](#) [DC-8002-S](#)