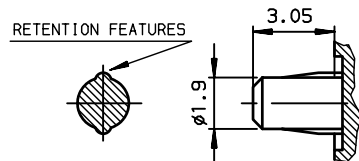
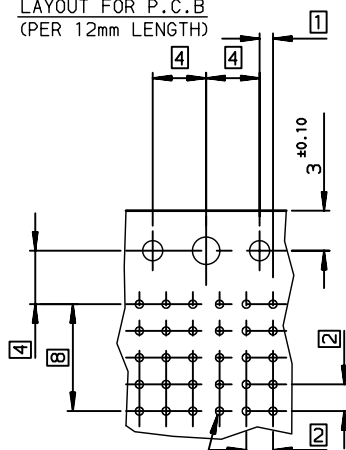


DETAIL OF FORCE-FIT PEGS

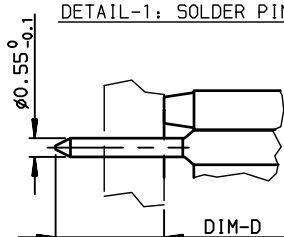


LAYOUT FOR P.C.B
(PER 12mm LENGTH)



Hole according to product spec
GS-12-445 (for press-fit) ,
GS-12-446 (for STB)

DETAIL-1: SOLDER PIN



TIN LEAD PART NUMBER

Part Number: HM1L54xyP000Hz / 000H6						
MATING LENGTH DIM-P / REPLACE 'x' BY:						
	ROW-A	ROW-B	ROW-C	ROW-D	ROW-E	
A =	5.00	5.00	5.00	5.00	5.00	
L =	5.75	5.75	5.75	5.75	5.75	
D =	6.50	6.50	6.50	6.50	6.50	
B =	6.50	5.00	5.00	5.00	5.00	
C =	6.50	5.75	5.75	6.50	5.75	
TERMINATION LENGTH						D=2.90 ±0.3,replace y by A
DIM-D						D=3.70 ±0.3,replace y by B

LEAD-FREE PART NUMBER

[illegible]

GENERAL CHARACTERISTICS AND ROHS INFORMATIONS:





SEE PRODUCT SPECIFICATION GS-12-446

NOTE-2: INSERTION IN PCB, HANDLING OR BENCH PRESS
NOTE-3: IF SUFFIX "P" IS ADDED IN P/N PACKAGING IS IN TRAYS
BUT CONNECTOR MARKING IS WITHOUT "P"

EXAMPLE: HM1XXXXXXXXXH6P, MARKED HM1XXXXXXXXXH6

NOTE-4: REAR CENTRAL SUPPORT FOR BETTER ASSY ON PCB

rev	ecn no	dr	date
C	-	MAS	2000/08/31
D	LS05-001	MLE	2005/03/15
E	LS06-0095	LGO	2006/07/10
F	LS07-0184	MLE	2007/07/24
-	-	-	-
-	-	-	-
-	-	-	-

www.fciconnect.com			surface ISO 1302 		tolerance std ISO 406 ISO 1101		projection 		mm 	
TOLERANCES UNLESS OTHERWISE SPECIFIED										
Dr	CHAMPION	1997/06/17	ANGULAR	LINEAR	0.X	±0.1	size A2	Scale 2.5		
Eng	LENOIR	1997/06/17			0.XX	±0.1				
Chr	LEGARE	1997/06/17			0.XX' ±2'	±0.1		ECN	LS07-0184	
Appr	LEGARE	1997/06/17	Product family				METRAL	Spec ref -		
			METRAL RA HEADER 5 ROW				dwg no C-8626-0242		Rev.	
title			STANDARD SOLDER 240 WAY						F	
catalog no			-				CUSTOMER		sheet 1 of 1	

Mouser Electronics

Authorized Distributor

Click to View Pricing, Inventory, Delivery & Lifecycle Information:

[FCI / Amphenol:](#)

[HM1L54AAP000H6PLF](#) [HM1L54LAP000H6PLF](#)