

MICRO SWITCH

A DIVISION OF HONEYWELL INTERNATIONAL REGULATED COMPANY
FREEPORT, NEW YORK

FED. MFR CODE 91929

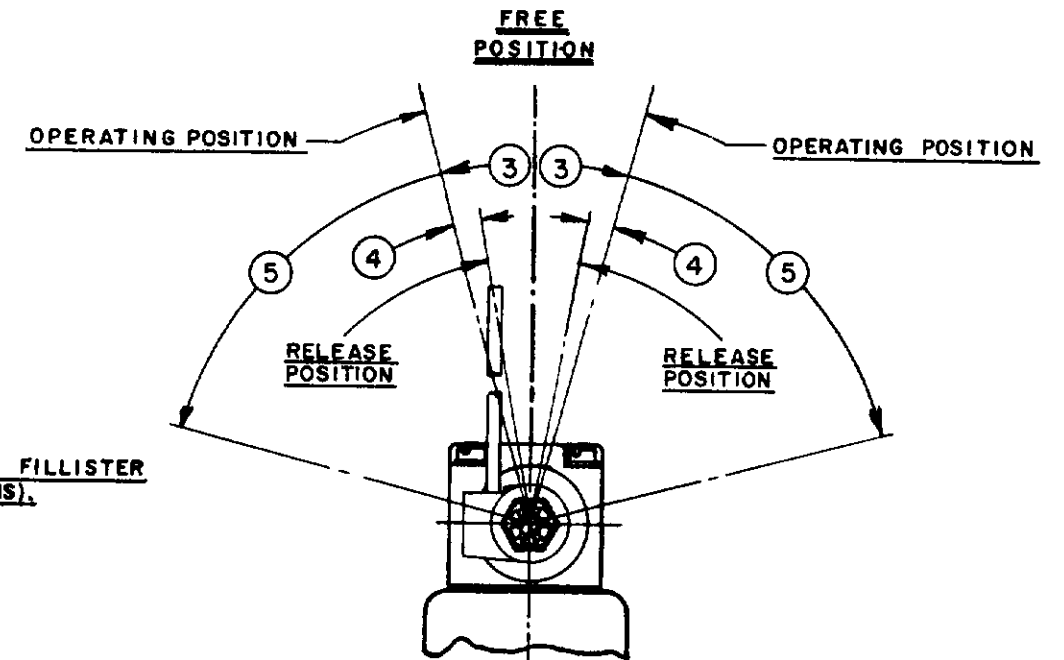
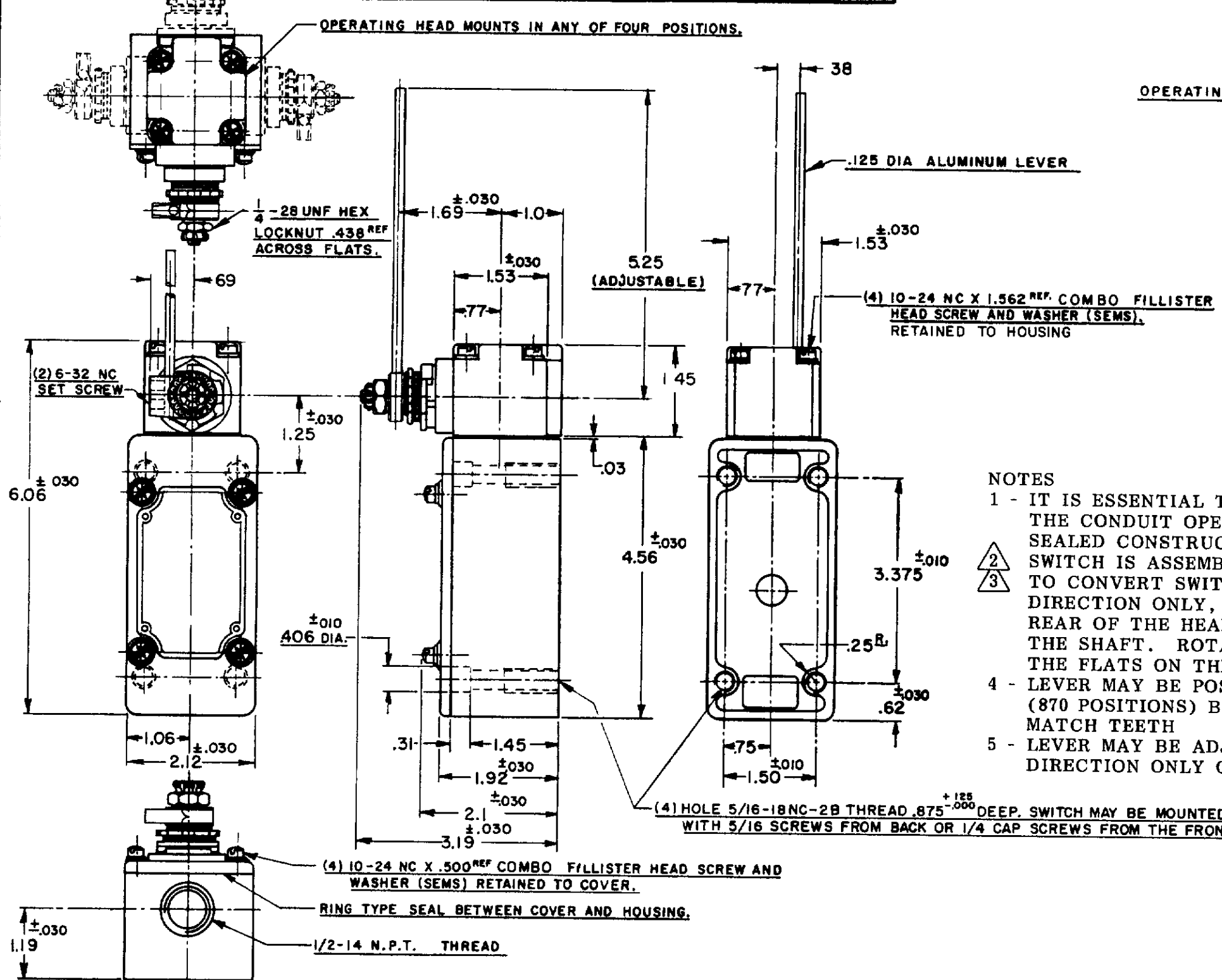
SWITCH-ENCLOSED

CATALOG LISTING
151ML10

THIS DRAWING COVERS A PROPRIETARY ITEM AND IS THE PROPERTY OF MICRO SWITCH A DIVISION OF HONEYWELL. THIS DRAWING IS NOT TO BE COPIED OR USED WITHOUT THE APPROVAL OF MICRO SWITCH

M

OPERATING HEAD MOUNTS IN ANY OF FOUR POSITIONS.



NOTES

- 1 - IT IS ESSENTIAL TO PREVENT ENTRANCE OF HARMFUL AGENTS THRU THE CONDUIT OPENING TO OBTAIN THE FULL BENEFIT OF THE SEALED CONSTRUCTION PROVIDED IN THIS UNIT
- 2
3 SWITCH IS ASSEMBLED FOR ACTUATION IN CLOCKWISE DIRECTION ONLY TO CONVERT SWITCH FOR ACTUATION IN THE COUNTER-CLOCKWISE DIRECTION ONLY, REMOVE THE HEAD AND SLIDE THE CAM TOWARD THE REAR OF THE HEAD SUFFICIENTLY TO DISENGAGE FROM THE FLATS ON THE SHAFT. ROTATE THE CAM 180° AND RE-ENGAGE THE CAM WITH THE FLATS ON THE SHAFT
- 4 - LEVER MAY BE POSITIVELY LOCKED AT INTERVALS OF APPROX 0.4° (870 POSITIONS) BY POSITIONING LEVER AND ROTATING SPACER TO MATCH TEETH
- 5 - LEVER MAY BE ADJUSTED TO ACTUATE THE SWITCH IN THE CLOCKWISE DIRECTION ONLY OR THE COUNTER-CLOCKWISE DIRECTION ONLY

74-963
 DRAWN J A P 23 SEPT 83
 CHECK C E C 30 SEPT 83
 CHECK C E C 30 SEPT 83
 ISSUE 12
 DRAWING NUMBER M 151ML10
 REPLACES 151ML10

| CHARACTERISTICS | |
|--------------------------|---------------|
| OPERATING FORCE | 5 OZ. MAX. |
| FULL OVERTRAVEL FORCE | 7 OZ. MAX. |
| RELEASE FORCE | 3/4 OZ. MIN. |
| PRETRAVEL | (3) -15° MAX |
| DIFFERENTIAL TRAVEL | (4) 7° MAX. |
| OVERTRAVEL | (5) -60° MIN. |
| SWITCH-BASIC REPLACEMENT | 1M5 |

| ELECTRICAL DATA | |
|---|---|
| CONTACT ARRANGEMENT | TWO CIRCUIT - DOUBLE THROW DOUBLE BREAK |
| BREAK DISTANCE | |
| 10A-120, 240, 480, OR 600 VAC 1/2 HP-120 VAC, 1 HP-240 VAC 0.8 A-115 VDC, 0.4 A-230 VDC PILOT DUTY 600 VAC MAX | |

| SCALE 1/2 TO 1 | |
|----------------------------|-------|
| DO NOT SCALE PRINT | |
| UNLESS OTHERWISE SPECIFIED | |
| DIMENSIONS ARE IN INCHES | |
| TOLERANCES ARE: | |
| ONE PLACE (0) | ±.030 |
| TWO PLACE (.00) | ±.008 |
| THREE PLACE (.000) | ±.003 |
| ANGLE | ± |
| WEIGHT | |



Mouser Electronics

Authorized Distributor

Click to View Pricing, Inventory, Delivery & Lifecycle Information:

[Honeywell:](#)

[151ML10](#)