

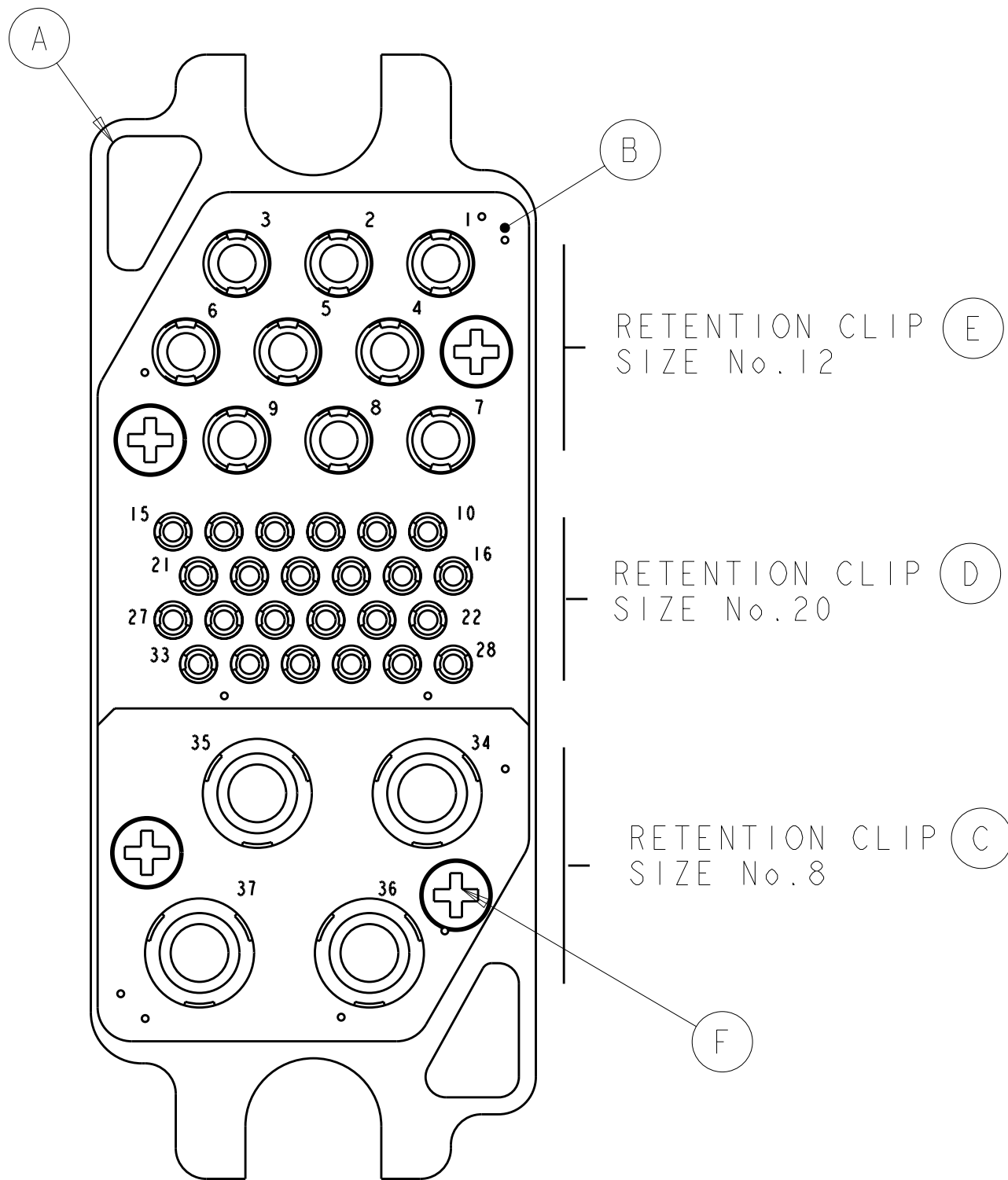
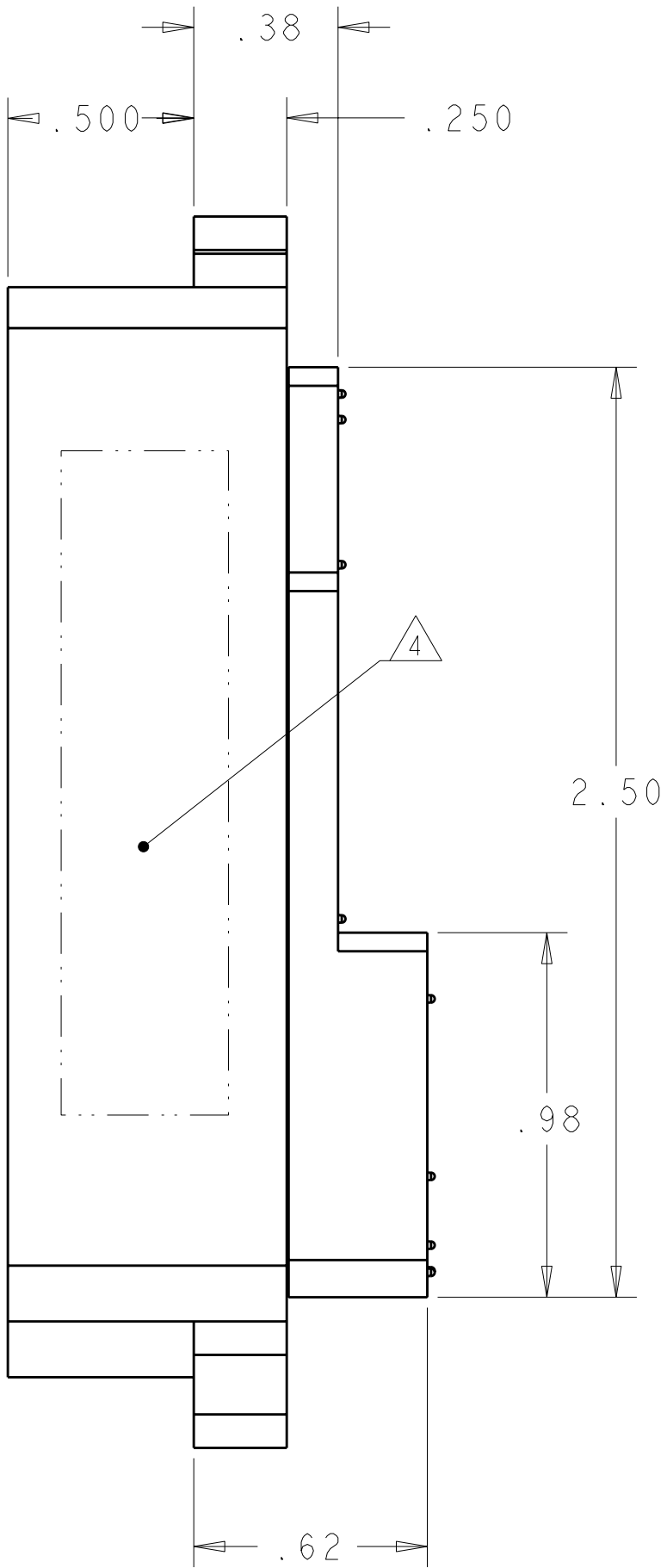
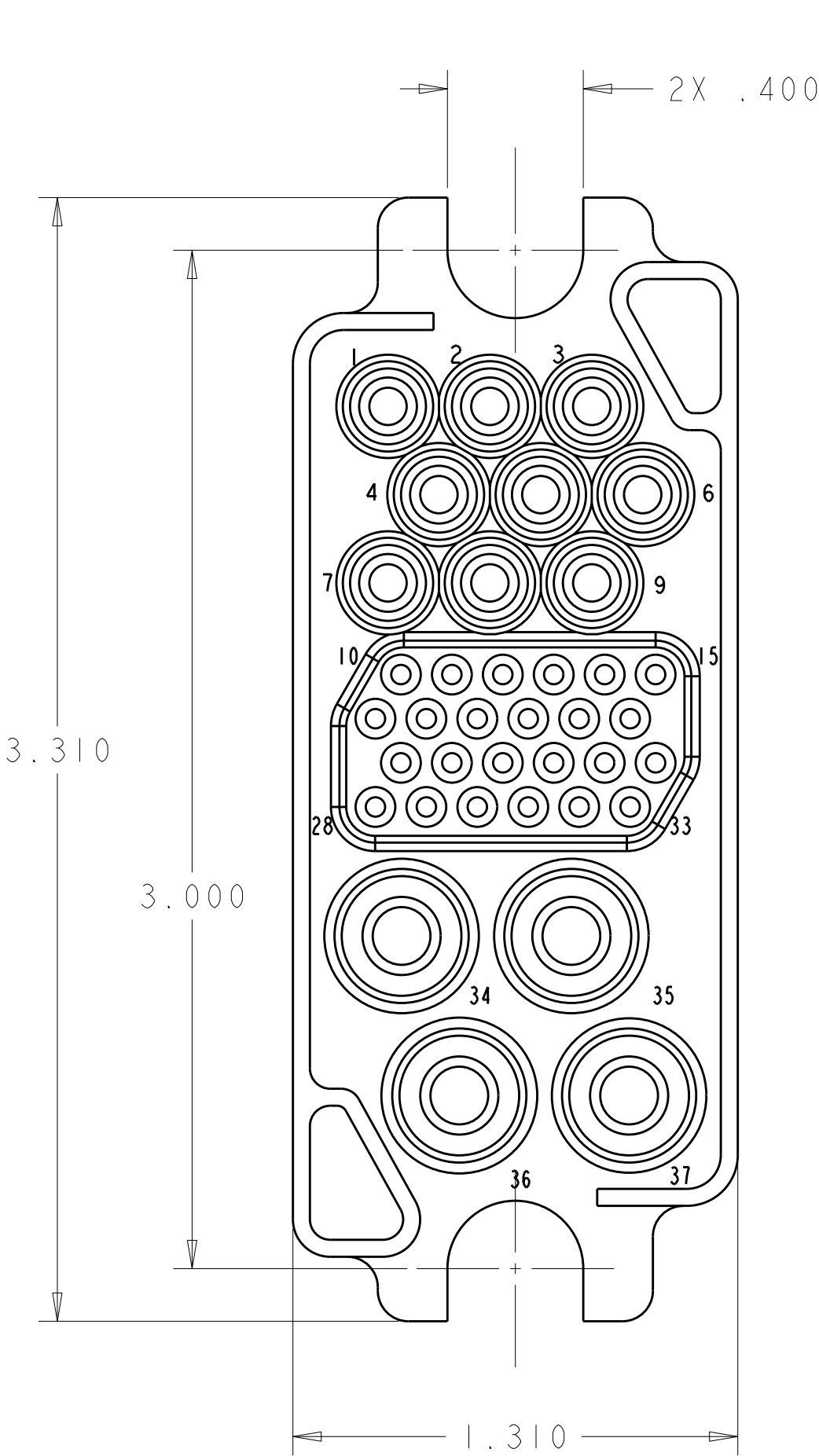
LOC	DIST	REVISIONS					
GP	00	P	LTR	DESCRIPTION	DATE	DWN	APVD
			C	REV PER ECO-08-007334	26MAR2008	RG	SF

D

C

B

A



D

C

B

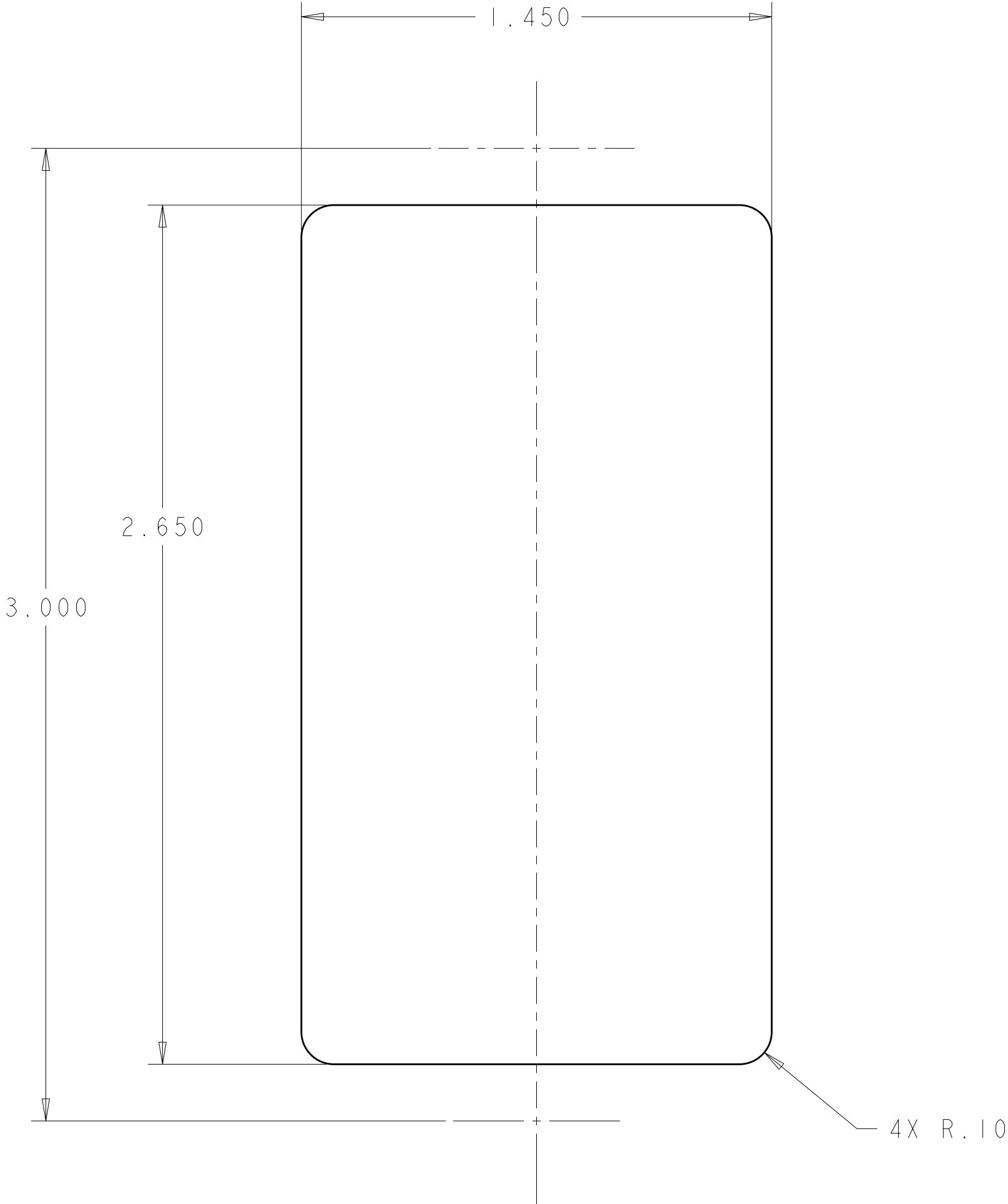
A

ELCON 75A MIDDLE DRAWER

AS SHOWN	6648167-1
DESCRIPTION	PART NUMBER

THIS DRAWING IS A CONTROLLED DOCUMENT FOR TYCO ELECTRONICS CORPORATION. IT IS SUBJECT TO CHANGE AND THE CONTROLLING ENGINEERING ORGANIZATION SHOULD BE CONTACTED FOR THE LATEST REVISION.		DWN R. GRZYBOWSKI 26MAR2008	Tyco Electronics Harrisburg, PA 17105-3608	
DIMENSIONS: INCHES		CHK D. ORRIS 26MAR2008	NAME SOCKET CONNECTOR HOUSING SUBASSEMBLY W/ SCREW MNT. FLOAT MOUNT	
TOLERANCES UNLESS OTHERWISE SPECIFIED: 0 PLC ± 1 PLC ±.02 2 PLC ±.010 3 PLC ±.010 4 PLC ±.010 ANGLES ±3 FINISH		APVD S. FLICKINGER 26MAR2008		
MATERIAL 2		PRODUCT SPEC - APPLICATION SPEC - WEIGHT -	SIZE A200779	CAGE CODE C-6648167
CUSTOMER DRAWING		SCALE 3:1	SHEET 1	OF 2
		REV C		

LOC	DIST	REVISIONS					
GP	00	P	LTR	DESCRIPTION	DATE	DWN	APVD
			-	SEE SHEET 1	-	-	-



RECOMMENDED PANEL CUTOUT
AS VIEWED FROM CONNECTOR MOUNTING SIDE

1. PART NUMBER CHANGES AND/OR DESIGN CHANGES AFFECTING ITEM INTERCHANGEABILITY REQUIRE TYCO ELECTRONICS APPROVAL AND AUTHORIZATION BY REVISION TO THIS DRAWING.
- 2 MATERIAL:
INSULATOR: THERMOPLASTIC, GLASS REINFORCED, UL94V-0
FLAMMABILITY RATED, COLOR - BLACK
RETENTION CLIP - BERYLLIUM COPPER OR STAINLESS STEEL
3. RETENTION CLIPS INSTALLED IN THE CONNECTOR ASSEMBLY.
- 4 ITEMS PROVIDED TO THIS SPECIFICATION TO BE PERMANENTLY IDENTIFIED PER THE FOLLOWING IDENTIFIER:

YEAR1WEEK1

TYCO ELECTRONICS P/NXXXXXXXX-XDATE CODE (e.g. 0608)XXXX

THIS DRAWING IS A CONTROLLED DOCUMENT FOR TYCO ELECTRONICS CORPORATION IT IS SUBJECT TO CHANGE AND THE CONTROLLING ENGINEERING ORGANIZATION SHOULD BE CONTACTED FOR THE LATEST REVISION.		DWN R.GRZYBOWSKI 26MAR2008 CHK D.ORRIS 26MAR2008 APVD S.FLICKINGER 26MAR2008		Tyco Electronics Harrisburg, PA 17105-3608	
DIMENSIONS: INCHES		TOLERANCES UNLESS OTHERWISE SPECIFIED:		NAME SOCKET CONNECTOR HOUSING SUBASSEMBLY W/ SCREW MNT. FLOAT MOUNT	
0 PLC ± 1 PLC ±.02 2 PLC ±.02 3 PLC ±.010 4 PLC ± ANGLES ±3		PRODUCT SPEC - APPLICATION SPEC -		SIZE A200779	
MATERIAL -		FINISH -		DRAWING NO C-6648167	
CUSTOMER DRAWING				RESTRICTED TO -	
SCALE 3:1				SHEET 2 OF 2 REV C	

Mouser Electronics

Authorized Distributor

Click to View Pricing, Inventory, Delivery & Lifecycle Information:

[TE Connectivity:](#)

[6648167-2](#)