

(0.80 mm) .0315"

SEAF8 SERIES

ULTRA-HIGH DENSITY OPEN-PIN-FIELD

SPECIFICATIONS

For complete specifications and recommended PCB layouts see www.samtec.com?SEAF8

Insulator Material:

Black LCP

Contact Material:

Copper Alloy

Plating:

Au or Sn over 50 μ " (1.27 μ m) Ni

Operating Temp Range:

-55 °C to +125 °C

Current Rating:

1.3 A per pin (10 adjacent pins powered)

Working Voltage:

220 VAC

RoHS Compliant:

Yes

Lead-Free Solderable:

Yes

Board Mates:

SEAM8

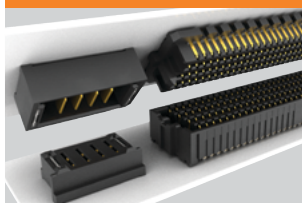
Cable Mates:

ESCA

Standoffs:

JSO

POWER/SIGNAL APPLICATION



Compatible with UMPT/UMPS for flexible two-piece power/signal solutions

Signal Integrity optimized Edge Rate® contact

Lead-Free solder charge terminations

4, 6, 8 and 10 rows
Up to 500 I/Os

7 mm and 10 mm stack heights

HIGH-SPEED CHANNEL PERFORMANCE

SEAM8/SEAF8 @ 7 mm Mated Stack Height

Rating based on Samtec reference channel.

For full SI performance data visit Samtec.com or contact

SIG@samtec.com

PAM4

56
Gbps

RECOGNITIONS

For complete scope of recognitions see www.samtec.com/quality



ALSO AVAILABLE (MOQ Required)

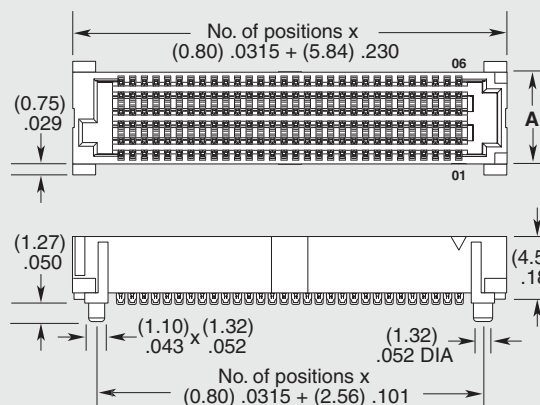
- Other pin counts

SEAF8	NO. PINS PER ROW	05.0	PLATING OPTION	NO. OF ROWS	SOLDER TYPE	K
	-10, -20, -30, -40, -50 (Standard sizes)		-L = 10 μ " (0.25 μ m) Gold on contact area, Matte Tin on solder tail -S = 30 μ " (0.76 μ m) Gold on contact area, Matte Tin on solder tail	-04 = Four Rows -06 = Six Rows -08 = Eight Rows -10 = Ten Rows	-2 = Lead-Free Solder Charge	-K = Polyimide film Pick & Place Pad

MATED HEIGHT*

SEAF8 LEAD STYLE	SEAM8 LEAD STYLE	
	-S02.0	-S05.0
-05.0	(7.00) .276	(10.00) .394

*Processing conditions will affect mated height.



NO. OF ROWS	A
-04	(4.30) .169
-06	(6.30) .248
-08	(8.30) .327
-10	(10.30) .406

Notes:

Patent Pending

Tape & Reel packaging is standard.

Some sizes, styles and options are non-standard, non-returnable.

Due to technical progress, all designs, specifications and components are subject to change without notice.

WWW.SAMTEC.COM

All parts within this catalog are built to Samtec's specifications.

Customer specific requirements must be approved by Samtec and identified in a Samtec customer-specific drawing to apply.