

LOC	DIST	REVISIONS					
		P	LTR	DESCRIPTION	DATE	DWN	APVD
AD	00		H3	PART STATUS UPDATED IN THE PARTS LIST TABLE	01OCT2015	KJK	PS

D

D

C

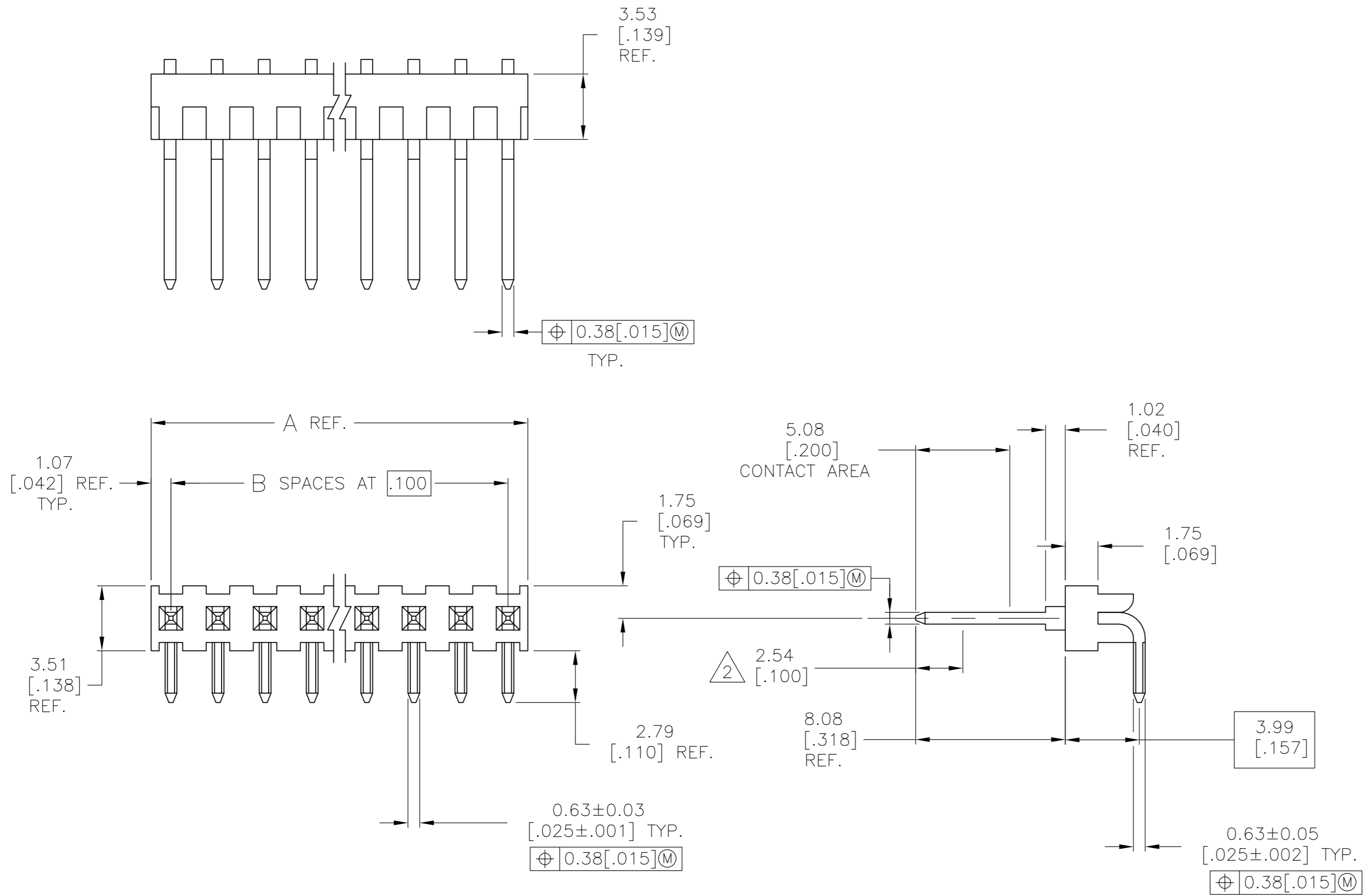
C

B

B

A

A



NOTES:

- RECOMMENDED MOUNTING HOLE:  $\phi$ 0.89±0.08 [.035±.003].
- POINT OF MEASUREMENT FOR PLATING THICKNESS.
- HOUSING: GLASS FILLED NYLON. COLOR – BLACK.  
POSTS: PHOS. BRONZE
- 0.00076 [.000030] GOLD IN CONTACT AREA, GOLD FLASH ON  
REMAINDER OF POSTS, ALL OVER 0.00127 [.000050] NICKEL.

39	101.19	[3.984]	40	4-87232-0
38	98.65	[3.884]	39	3-87232-9
37	96.11	[3.784]	38	3-87232-8
36	93.57	[3.684]	37	3-87232-7
35	91.03	[3.584]	36	3-87232-6
34	88.49	[3.484]	35	3-87232-5
33	85.95	[3.384]	34	3-87232-4
32	83.41	[3.284]	33	3-87232-3
31	80.87	[3.184]	32	3-87232-2
30	78.33	[3.084]	31	3-87232-1
29	75.79	[2.984]	30	3-87232-0
28	73.25	[2.884]	29	2-87232-9
27	70.71	[2.784]	28	2-87232-8
26	68.17	[2.684]	27	2-87232-7
25	65.63	[2.584]	26	2-87232-6
24	63.09	[2.484]	25	2-87232-5
23	60.55	[2.384]	24	2-87232-4
22	58.01	[2.284]	23	2-87232-3
21	55.47	[2.184]	22	2-87232-2
20	52.93	[2.084]	21	2-87232-1
19	50.39	[1.984]	20	2-87232-0
18	47.85	[1.884]	19	1-87232-9
17	45.31	[1.784]	18	1-87232-8
16	42.77	[1.684]	17	1-87232-7
15	40.23	[1.584]	16	1-87232-6
14	37.69	[1.484]	15	1-87232-5
13	35.15	[1.384]	14	1-87232-4
12	32.61	[1.284]	13	1-87232-3
11	30.07	[1.184]	12	1-87232-2
10	27.53	[1.084]	11	1-87232-1
9	24.99	[0.984]	10	1-87232-0
8	22.45	[0.884]	9	87232-9
7	19.91	[0.784]	8	87232-8
6	17.37	[0.684]	7	87232-7
5	14.83	[0.584]	6	87232-6
4	12.29	[0.484]	5	87232-5
3	9.75	[0.384]	4	87232-4
2	7.21	[0.284]	3	87232-3
1	4.67	[0.184]	2	87232-2
0	2.13	[0.084]	1	87232-1

B

A

NO OF  
POSN

PART  
NUMBER

THIS DRAWING IS A CONTROLLED DOCUMENT.		DWN E. BRANDBERG 31-MAR-97	TE Connectivity			
DIMENSIONS: mm [INCHES]	TOLERANCES UNLESS OTHERWISE SPECIFIED:	CHK S. SHUEY 31-MAR-97				
	0 PLC ± - 1 PLC ± - 2 PLC ± 0.13 [.005] 3 PLC ± - 4 PLC ± - ANGLES ± -	APVD S. SHUEY 31-MAR-97	NAME			
		PRODUCT SPEC	HEADER ASSEMBLY, MOD II, 2.54 [.100] CL, RIGHT ANGLE, 0.64 [.025] SQUARE POST, SINGLE ROW			
MATERIAL	FINISH	APPLICATION SPEC	SIZE	CAGE CODE	DRAWING NO	RESTRICTED TO
		WEIGHT -	A2	00779	C=87232	-
CUSTOMER DRAWING			SCALE	5:1	SHEET	1 of 1
			REV H3			

# Mouser Electronics

Authorized Distributor

Click to View Pricing, Inventory, Delivery & Lifecycle Information:

[TE Connectivity:](#)

[87232-7](#)