

THIS DRAWING IS UNPUBLISHED.

RELEASED FOR PUBLICATION

20

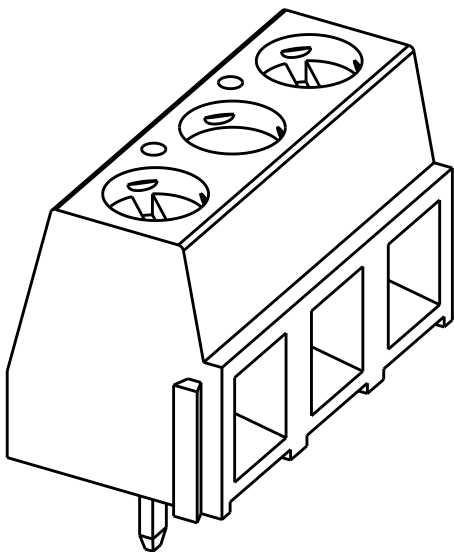
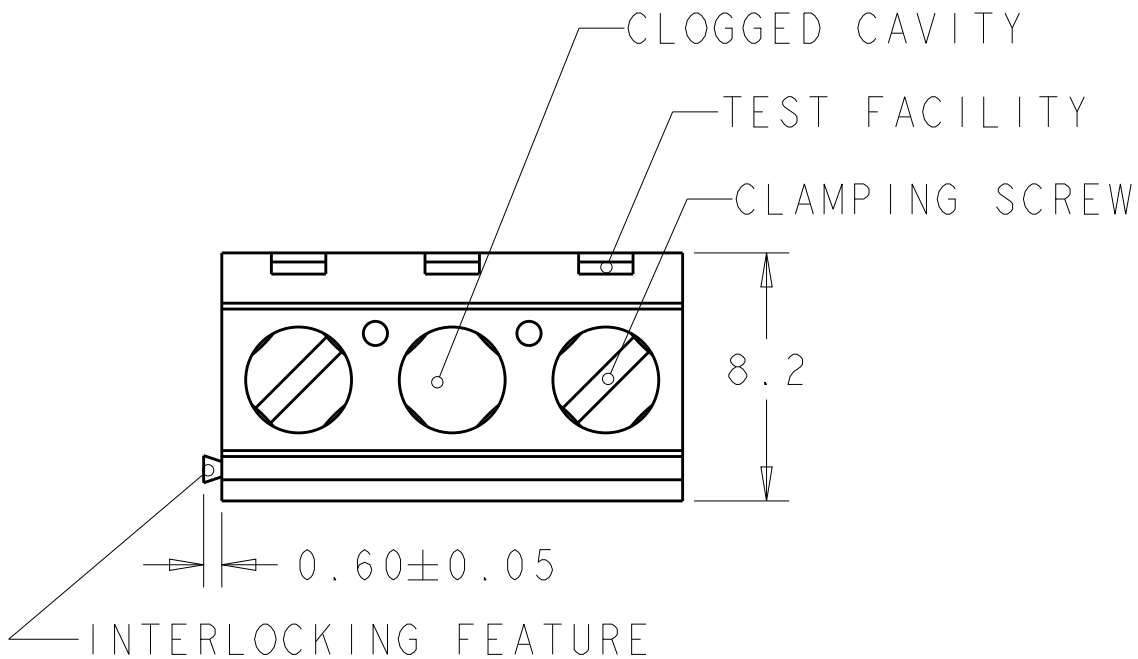
© COPYRIGHT 20

BY -

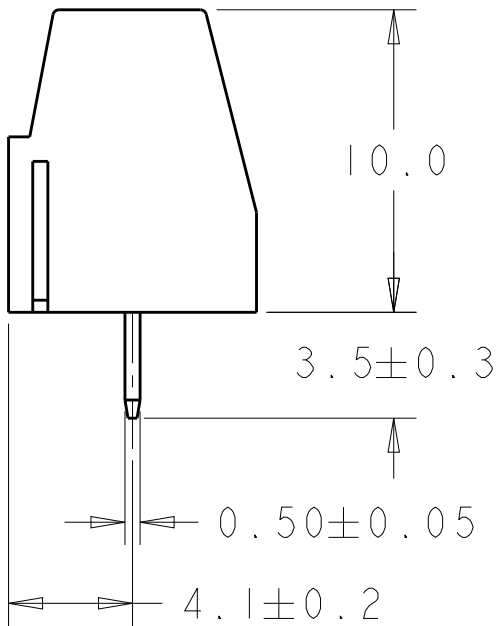
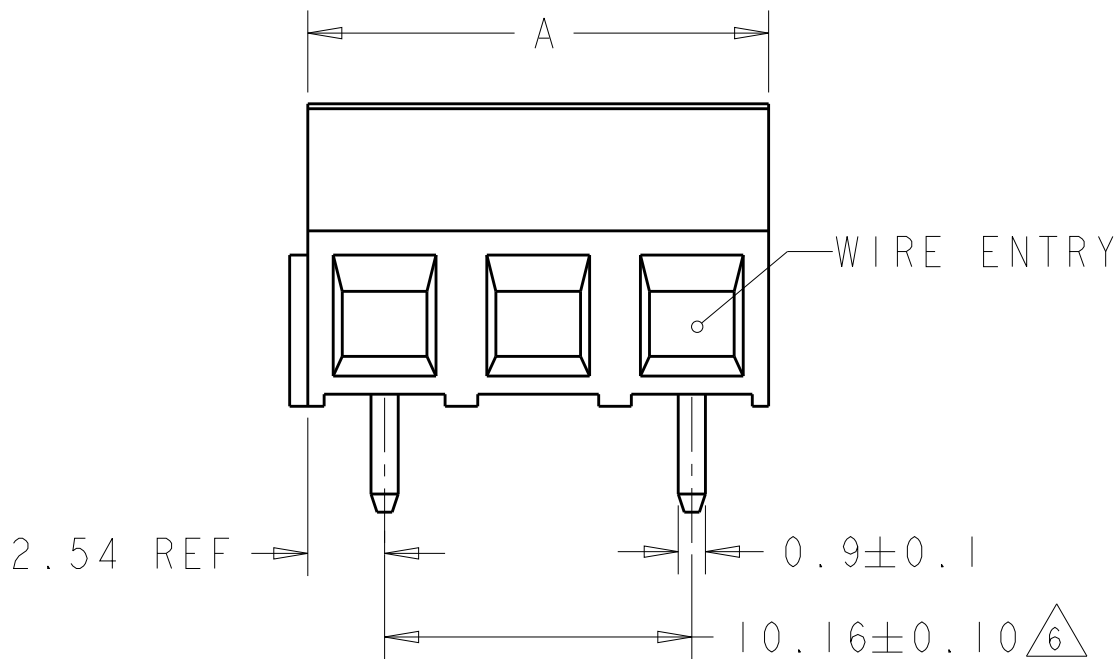
ALL RIGHTS RESERVED.

REVISIONS

P	LTR	DESCRIPTION	DATE	DWN	APVD
	E	PACKAGING CHANGED FROM BLACK POLYURETHANE SPONGE TO TRAY	27MAR2018	RK	PS

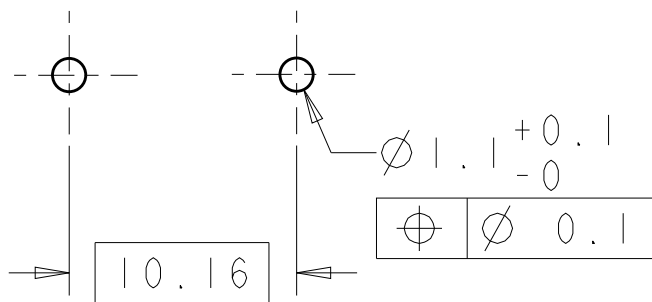



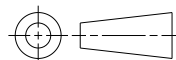
282836-2 AS SHOWN



OBSOLETE	127.00	13	1-282839-3
	116.84	12	1-282839-2
	106.68	11	1-282839-1
	96.52	10	1-282839-0
	86.36	9	282839-9
	76.20	8	282839-8
	66.04	7	282839-7
	55.88	6	282839-6
	45.72	5	282839-5
	35.56	4	282839-4
	25.40	3	282839-3
	15.24	2	282839-2
DIM. A NO OF POS. PART NUMBER			

RECOMMENDED PC BOARD LAYOUT



THIS DRAWING IS A CONTROLLED DOCUMENT.		DWN E. ZANOLINI 04SEP2001	 TE Connectivity					
DIMENSIONS: mm	TOLERANCES UNLESS OTHERWISE SPECIFIED:	CHK D. BIEVENOUR 04SEP2001	NAME TERMINAL BLOCK PCB MOUNT SIDE ENTRY WIRE 10.16mm PITCH					
		APVD D. BIEVENOUR 04SEP2001						
	0 PLC ±- 1 PLC ±.3 2 PLC ±.25 3 PLC ±- 4 PLC ±- ANGLES ±2	PRODUCT SPEC 108-20166	SIZE A3			CAGE CODE 00779	DRAWING NO C-282839	RESTRICTED TO -
		APPLICATION SPEC 114-20079						
		MATERIAL SEE NOTES	FINISH SEE NOTES	WEIGHT -				
CUSTOMER DRAWING			SCALE 4:1	SHEET 1	OF 2	REV E		


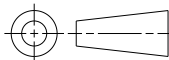
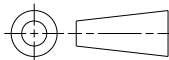
THIS DRAWING IS UNPUBLISHED.		RELEASED FOR PUBLICATION		20
© COPYRIGHT 20		BY -		ALL RIGHTS RESERVED.

REVISIONS					
P	LTR	DESCRIPTION	DATE	DWN	APVD
	-	SEE SHEET 1	-	-	-

NOTES:

1. MATERIALS AND FINISH
HOUSING: PA 6-6, UL 94-V0, COLOR GREEN.
CLAMP: BRASS, NICKEL PLATED.
TERMINAL: BRASS, TIN PLATED.
CLAMPING SCREW: M3, BRASS, NICKEL PLATED.
2. MECHANICAL
WIRE STRIPPING LENGTH : 5.0-6.0 mm
MIN. PC BOARD HOLES DIAMETER : 1.1 mm
MAX. PC BOARD THICKNESS : 2.4 mm
RECOMMENDED TIGHTENING TORQUE FOR SCREW : 0.5 Nm.
3. ELECTRICAL
WIRE RANGE : 16-30 AWG
MAX. VOLTAGE : 600 V
MAX CURRENT : 13.5 A
CONTACT RESISTANCE : <15 m Ohm
INSULATION RESISTANCE : >1000 M Ohm (500V DC)
4. RECOGNIZED UNDER THE COMPONENT PROGRAM OF
UNDERWRITERS LABORATORIES INC., FILE NO E60677.
5. OPERATING TEMPERATURE RANGE: -40°C TO +110°C
- 6

 NOT CUMULATIVE TOLERANCE.
7. PACKED IN TRAY.

THIS DRAWING IS A CONTROLLED DOCUMENT.		DWN 04SEP2001 E. ZANOLINI		 TE Connectivity						
DIMENSIONS: mm		CHK 04SEP2001 D. BIEVENOUR		NAME TERMINAL BLOCK PCB MOUNT SIDE ENTRY WIRE 10.16mm PITCH						
		APVD 04SEP2001 D. BIEVENOUR								
		PRODUCT SPEC 108-20166								
		APPLICATION SPEC 114-20079		SIZE	CAGE CODE	DRAWING NO	RESTRICTED TO			
		WEIGHT -		A3	00779	C-282839	-			
MATERIAL SEE NOTES		FINISH SEE NOTES		CUSTOMER DRAWING				SCALE 4:1	SHEET 2 OF 2	REV E

Mouser Electronics

Authorized Distributor

Click to View Pricing, Inventory, Delivery & Lifecycle Information:

[TE Connectivity:](#)

[282839-2](#)