

TINA3-WWW

~70° wide beam optimized for CREE XP-E.
Assembly with holder, installation tape and
location pins.

TECHNICAL SPECIFICATIONS:

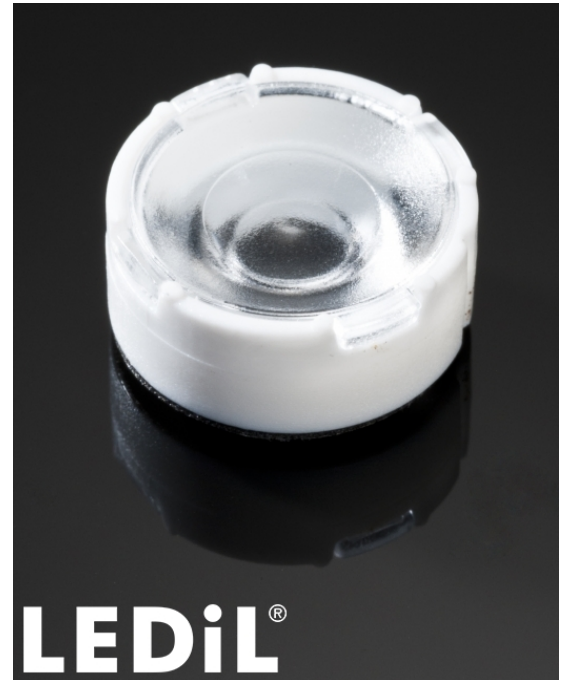
Dimensions	Ø 16.1 mm
Height	6.9 mm
Fastening	tape, pin
ROHS compliant	yes ⓘ

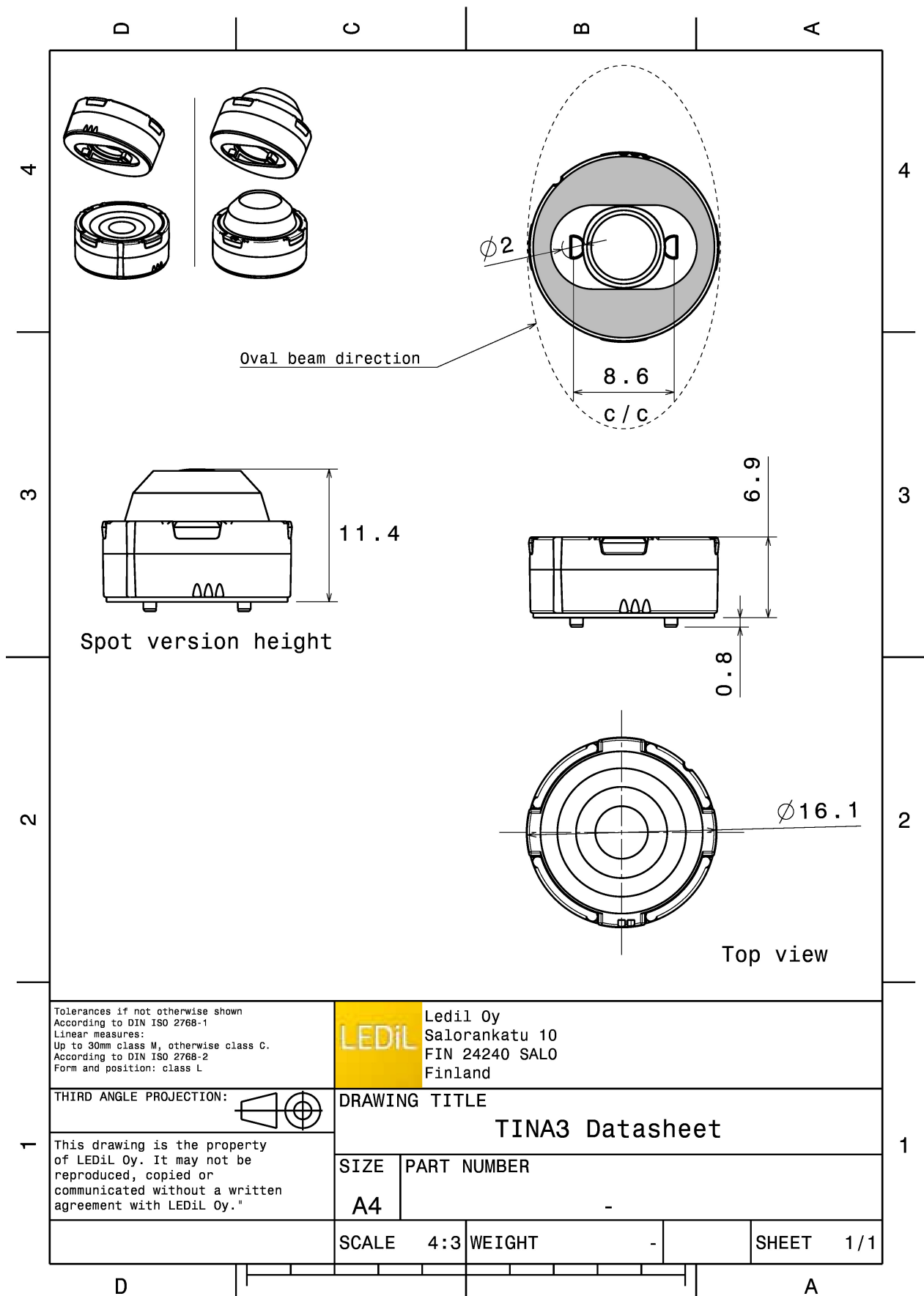
MATERIAL SPECIFICATIONS:

Component	Type	Material	Colour	Finish
TINA3-WWW	Single lens	PMMA		
TINA3-HLD-PIN-TAPE-XP	Holder	PC		
TINA-TAPE3	Tape	PU tape		

ORDERING INFORMATION:

Component		Qty in box	MOQ	MPQ	Box weight (kg)
FA11826_TINA3-WWW	Single lens	2016	288	288	3.9
» Box size:					

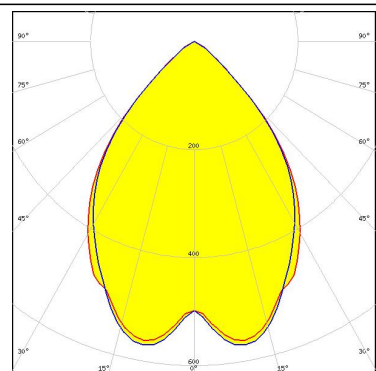




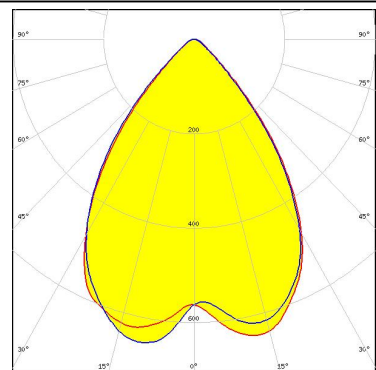
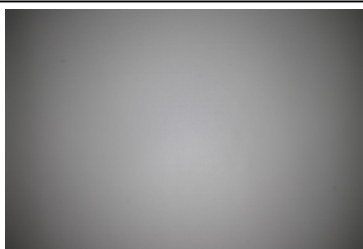
PHOTOMETRIC DATA (MEASURED):



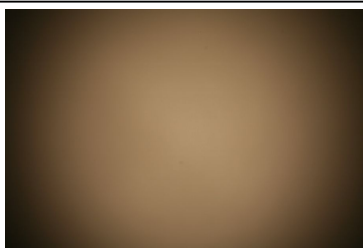
LED XP-G
FWHM 77.0°
Efficiency 92 %
Peak intensity 0.500 cd/lm
LEDs/each optic 1
Light colour White
Required components:



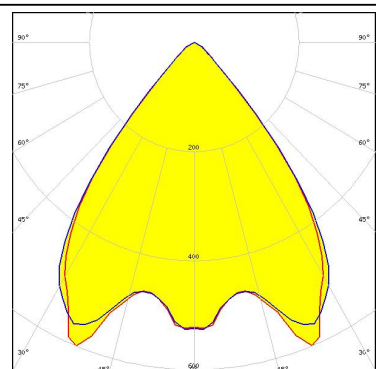
LED XP-L HI
FWHM 77.0°
Efficiency 90 %
Peak intensity 0.670 cd/lm
LEDs/each optic 1
Light colour White
Required components:



LED LUXEON A
FWHM 80.0°
Efficiency 90 %
Peak intensity 0.500 cd/lm
LEDs/each optic 1
Light colour White
Required components:



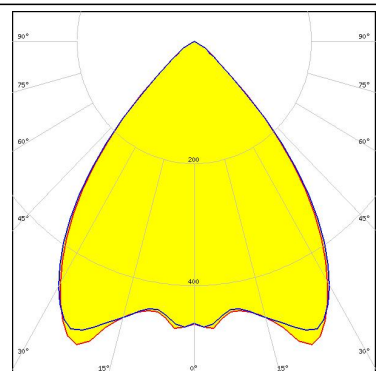
LED LUXEON Rebel
FWHM 77.0°
Efficiency 81 %
Peak intensity 0.520 cd/lm
LEDs/each optic 1
Light colour White
Required components:



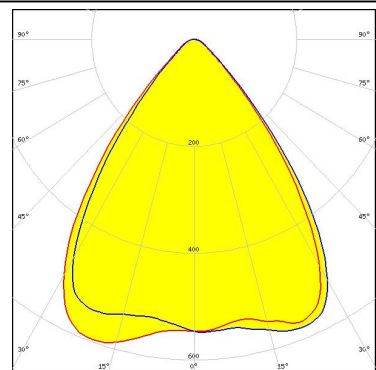
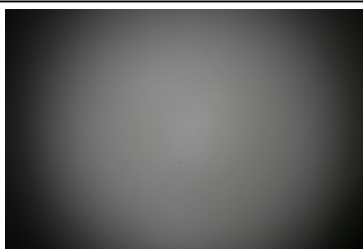
PHOTOMETRIC DATA (MEASURED):



LED LUXEON Rebel ES
 FWHM 80.0°
 Efficiency 91 %
 Peak intensity 0.460 cd/lm
 LEDs/each optic 1
 Light colour White
 Required components:



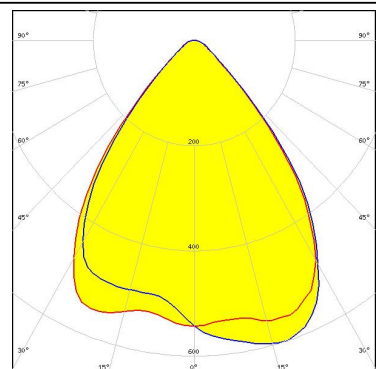
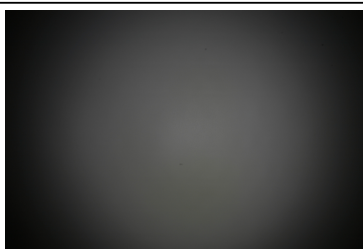
LED NF2x757A
 FWHM 76.0°
 Efficiency 88 %
 Peak intensity 0.600 cd/lm
 LEDs/each optic 1
 Light colour White
 Required components:



LED NVSxx19A
 FWHM 78.0°
 Efficiency 91 %
 Peak intensity 0.550 cd/lm
 LEDs/each optic 1
 Light colour White
 Required components:



LED Duris S5 (2 chip)
 FWHM 80.0°
 Efficiency 88 %
 Peak intensity 0.600 cd/lm
 LEDs/each optic 1
 Light colour White
 Required components:



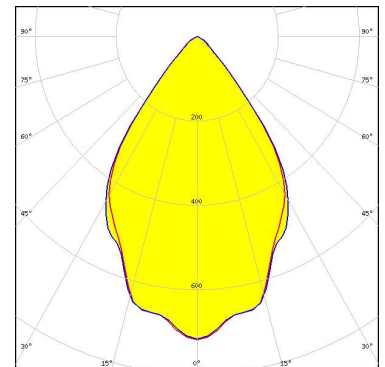
PHOTOMETRIC DATA (MEASURED):

OSRAM
Opto Semiconductors

LED OSLON SSL 150
FWHM 68.0°
Efficiency 88 %
Peak intensity 0.700 cd/lm
LEDs/each optic 1
Light colour White
Required components:

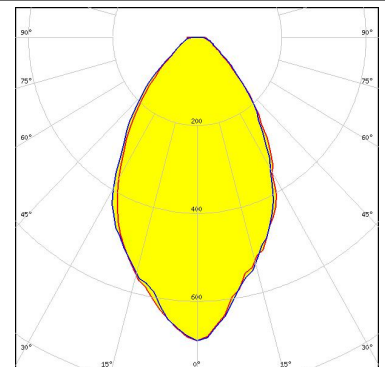
OSRAM
Opto Semiconductors

LED OSLON SSL 80
FWHM 69.0°
Efficiency 88 %
Peak intensity 0.700 cd/lm
LEDs/each optic 1
Light colour White
Required components:



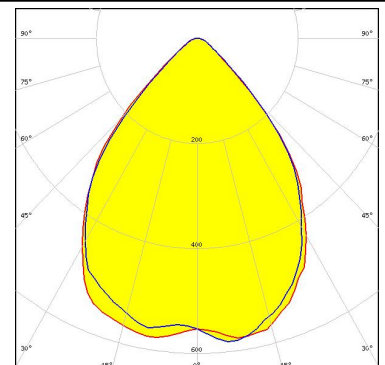
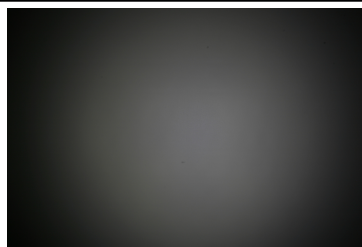
SEOUL
SEMICONDUCTOR

LED Z5
FWHM 62.0°
Efficiency 89 %
Peak intensity 0.700 cd/lm
LEDs/each optic 1
Light colour White
Required components:



SEOUL
SEMICONDUCTOR

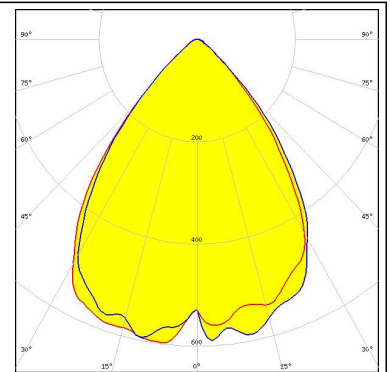
LED Z5M1/Z5M2
FWHM 82.0°
Efficiency 90 %
Peak intensity 0.600 cd/lm
LEDs/each optic 1
Light colour White
Required components:



PHOTOMETRIC DATA (SIMULATED):

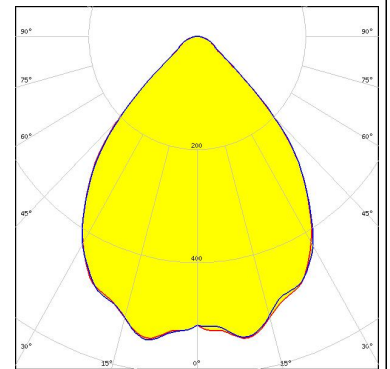


LED NF2x757G
FWHM 75.0°
Efficiency 88 %
Peak intensity 0.610 cd/lm
LEDs/each optic 1
Light colour White
Required components:



SEOUL SEMICONDUCTOR

LED Z8Y22P
FWHM 84.0°
Efficiency 90 %
Peak intensity 0.540 cd/lm
LEDs/each optic 1
Light colour White
Required components:



GENERAL INFORMATION:

NOTE: The typical beam angle will be changed by different color, chip size and chip position tolerance. The typical total beam angle is the full angle measured where the luminous intensity is half of the peak value.

MATERIALS:

As part of our continuous research and improvement processes, and to ensure the best possible quality and availability of our products, LEDiL reserves the right to change material grades without notice.

PRODUCT DATA USER AGREEMENT AND DISCLAIMER:

The measured data in the provided downloadable LEDiL Product Datasheets and Mechanical 2D-Drawings is rounded and provided as reference for planning. LEDiL Oy's optical specifications have been verified by conducting performance testing of the products in accordance with the company's quality system. The reported data are averaged results of multiple measurements with typical variation. LEDiL Oy reserves the right to without prior notification make changes and improvements to its products.

LEDiL Oy assumes neither warranty, nor guarantee nor any other liability of any kind for the contents and correctness of the provided data. The provided data has been generated with highest diligence but the provided data may in reality not represent the complete possible variation range of all intrinsic parameters. Therefore, in certain cases a deviation from the provided data could occur.

LEDiL Oy reserves the right to undertake technical changes of its products without further notification which could lead to changes in the provided data. LEDiL Oy assumes no liability of any kind for the possible deviation from any provided data or any other damage resulting from the usage of the provided data.

The user agrees to this disclaimer and user agreement with the download or usage of the provided files.

LEDiL Oy

Joensuunkatu 13
FI-24240 SALO
Finland

LEDiL Inc.

228 West Page Street
Suite D
Sycamore IL 60178
USA

Local sales and technical support

[www.ledil.com/
where_to_buy](http://www.ledil.com/where_to_buy)

Shipping locations

Salu, Finland
Hong Kong, China

Distribution Partners

[www.ledil.com/
where_to_buy](http://www.ledil.com/where_to_buy)

Mouser Electronics

Authorized Distributor

Click to View Pricing, Inventory, Delivery & Lifecycle Information:

Ledil:

[FA11826_TINA3-WWW](#) [CA11020_TINA2-RS](#)