

4

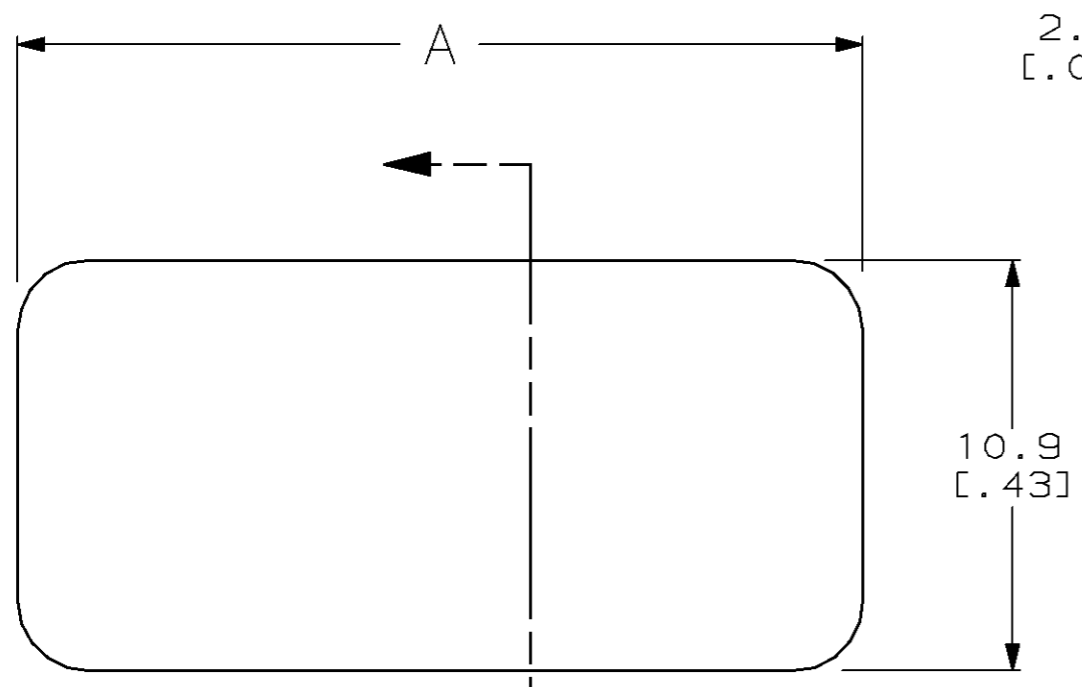
3

2

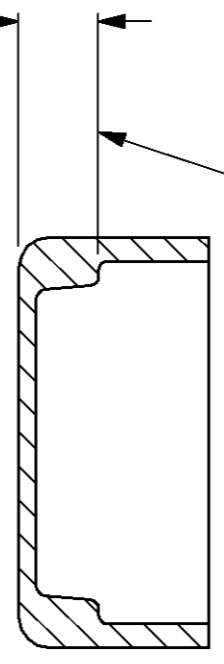
1

THIS DRAWING IS UNPUBLISHED. RELEASED FOR PUBLICATION, 19 .
 © COPYRIGHT 19 BY AMP INCORPORATED. ALL RIGHTS RESERVED.

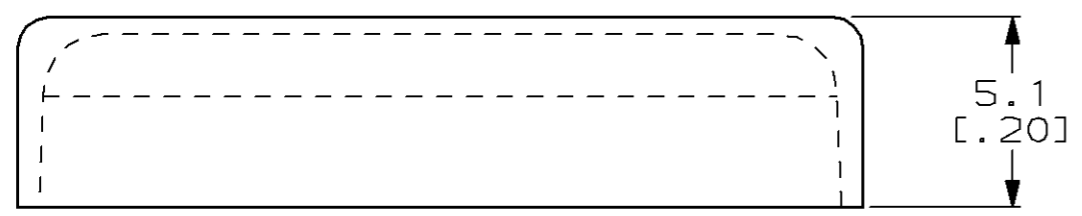
LOC	DIST	REVISIONS			
P	LTR	DESCRIPTION	DATE	DWN	APVD
AG	1	L	OBSOLETE -2 PER 0030-0243-96	1-30-97	RT JR



2.0±0.3
[.08±.01]



TOP OF SWITCH
HOUSING, REF



	22.6 [.89]	8	435238-5
OBSOLETE	15.0 [.59]	5	435238-2
	12.4 [.49]	4	435238-1
A		NO. OF SWITCH POSITIONS	PART NO.

-5 SHOWN

<small>THIS DRAWING IS A CONTROLLED DOCUMENT FOR AMP INCORPORATED. IT IS SUBJECT TO CHANGE AND THE CONTROLLING ENGINEERING ORGANIZATION SHOULD BE CONTACTED FOR THE LATEST REVISION.</small>		DWN R. TALLEY 5-9-95 CHK A. HOLT 5-9-95 APVD T. SUDNIK 5-9-95 PRODUCT SPEC APPLICATION SPEC WEIGHT - CUSTOMER DRAWING	AMP AMP Incorporated Harrisburg, PA 17105-3608 NAME COVER, PROTECTIVE, DIP SWITCH, TYPE C SIZE A3 CAGE CODE 00779 DRAWING NO. C-435238 SCALE 5:1 SHEET 1 OF 1 REV L
DIMENSIONS: mm [INCHES]	TOLERANCES UNLESS OTHERWISE SPECIFIED: 0 PLC ±- 1 PLC ±0.5 [.02] 2 PLC ±- 3 PLC ±- 4 PLC ±- ANGLES ±- FINISH -		
MATERIAL POLYETHYLENE, NATURAL			

Mouser Electronics

Authorized Distributor

Click to View Pricing, Inventory, Delivery & Lifecycle Information:

[TE Connectivity:](#)

[435238-1](#)