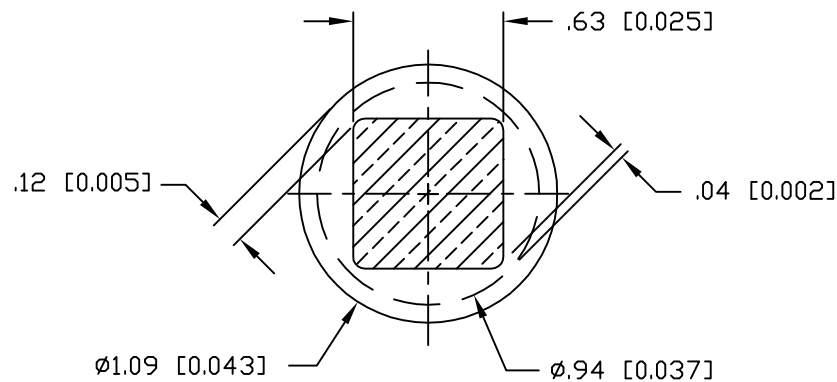


This drawing involves proprietary design rights of Tyco Electronics Corporation, and all design, manufacture, reproduction, use and sale rights regarding the same are expressly reserved. It is submitted for a specific purpose and the recipient by accepting this drawing, assumes custody and control and agrees to take reasonable precautions; (a) that this drawing will not be copied and reproduced, in whole or in part, or its contents revealed in any manner, or to any person except to meet the purpose for which it was delivered and (b) that any special features peculiar to this design will not be incorporated in other projects without the expressed written permission of Tyco Electronics Corporation.

P.C. BOARD
SURFACE REF

5.08 [0.200]
4.06 [0.160]



6 SOLDER TERMINATION AREA

RECOMMENDED PRINTED CIRCUIT HOLE

FINISHED HOLE: $\phi 1.02$ [0.040] $\pm .08$ [0.003]

DRILLED HOLE: $\phi 1.15$ [0.0453] $\pm .013$ [0.0005]

COPPER PLATE: .025-.050 [0.001-.002] MINIMUM (PER SURFACE)

TIN PLATE: .0005 [0.00002] MINIMUM (PER SURFACE)

5. SOLDER PIN DETAIL

4 ITEMS PROVIDED TO THIS SPECIFICATION TO BE PERMANENTLY IDENTIFIED PER THE FOLLOWING IDENTIFIER:

TYCO PART NUMBER
XXXXXXXX-X

DATE CODE (e.g. 0525)
YEAR WEEK
XXXX

3 FINISH:

CONTACTS: GOLD PLATE 0.76 μ m MIN. THK, OVER NICKEL

1.27 μ m MIN. THK

SOLDER TAILS: TIN PLATE 3.05 μ m MIN. THK, OVER

NICKEL 1.27 μ m MIN. THK.

2 MATERIAL:

INSULATORS: THERMOPLASTIC, GLASS REINFORCED, COLOR BLACK

SIGNAL CONTACTS: PHOSPHOR BRONZE ALLOY

POWER CONTACTS: PHOSPHOR BRONZE ALLOY

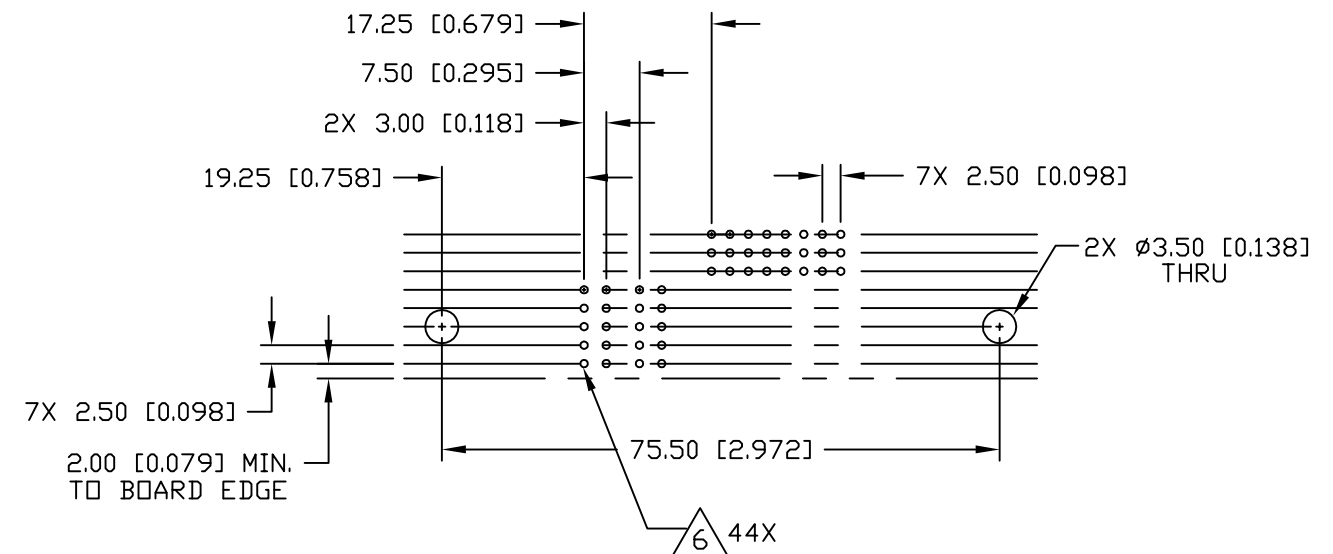
CROWN BAND CONTACT: BERYLLIUM COPPER ALLOY

1. PART NUMBER CHANGES AND OR DESIGN CHANGES AFFECTING ITEM INTERCHANGEABILITY REQUIRE PRIOR TO CONNECTIVITY APPROVAL AND AUTHORIZATION BY REVISION TO THIS DRAWING

NOTES: UNLESS OTHERWISE SPECIFIED

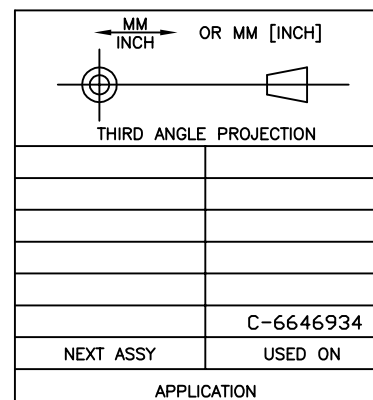
REVISIONS

EC NUMBER	REV	DESCRIPTION	DATE
---	1	INITIAL DRAWING	08/22/13



PRINTED CIRCUIT LAYOUT

6646934-1	ITEM	QTY	PART NUMBER	DESCRIPTION
TYCO PART NUMBER	LIST OF MATERIALS			
DRAWN	ORANDO LI	DATE	08/22/13	tyco Electronics Tyco Electronics Corporation Menlo Park, Ca 94025 ELCON TITLE CONNECTOR, PIN, RIGHT ANGLE SHORT SOLDER TAILS FLATPAQ
CHECKED				
APPROVED				
APPROVED	---	08/22/13		
DCA APPROVED	---	08/22/13		
ACAD FILE NUMBER	6646934A.DWG			
DWG SCALE 1=1				SH 1 OF 2



UNLESS OTHERWISE SPECIFIED,
DIMENSIONS ARE IN METRIC [INCHES]

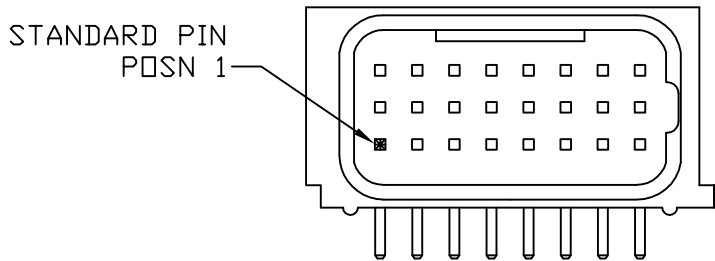
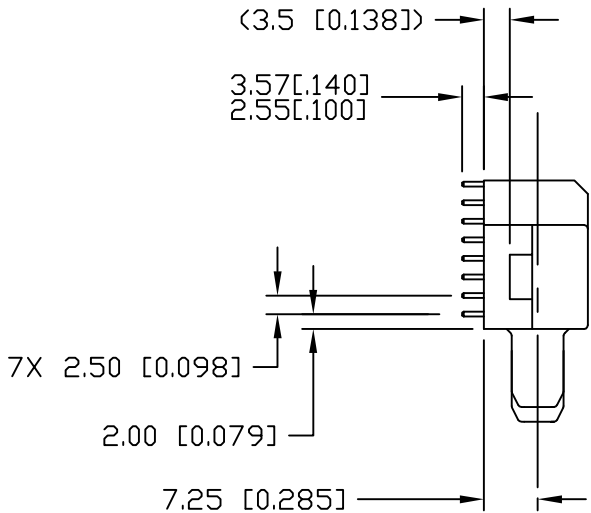
TOLERANCES

FRACTIONS \pm N/A
ANGLES \pm .5°
DECIMALS
.XX \pm .25 [0.010]
.X \pm .5 [0.020]

MATERIAL

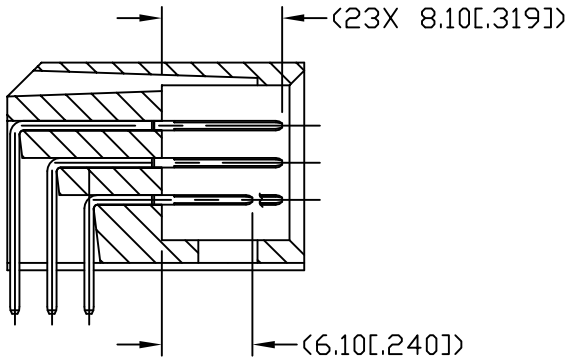
SEE LIST OF MATERIALS

This drawing involves proprietary design rights of Tyco Electronics Corporation, and all design, manufacture, reproduction, use and sale rights regarding the same are expressly reserved. It is submitted for a specific purpose and the recipient by accepting this drawing, assumes custody and control and agrees to take reasonable precautions; (a) that this drawing will not be copied and reproduced, in whole or in part, or its contents revealed in any manner, or to any person except to meet the purpose for which it was delivered and (b) that any special features peculiar to this design will not be incorporated in other projects without the expressed written permission of Tyco Electronics Corporation.



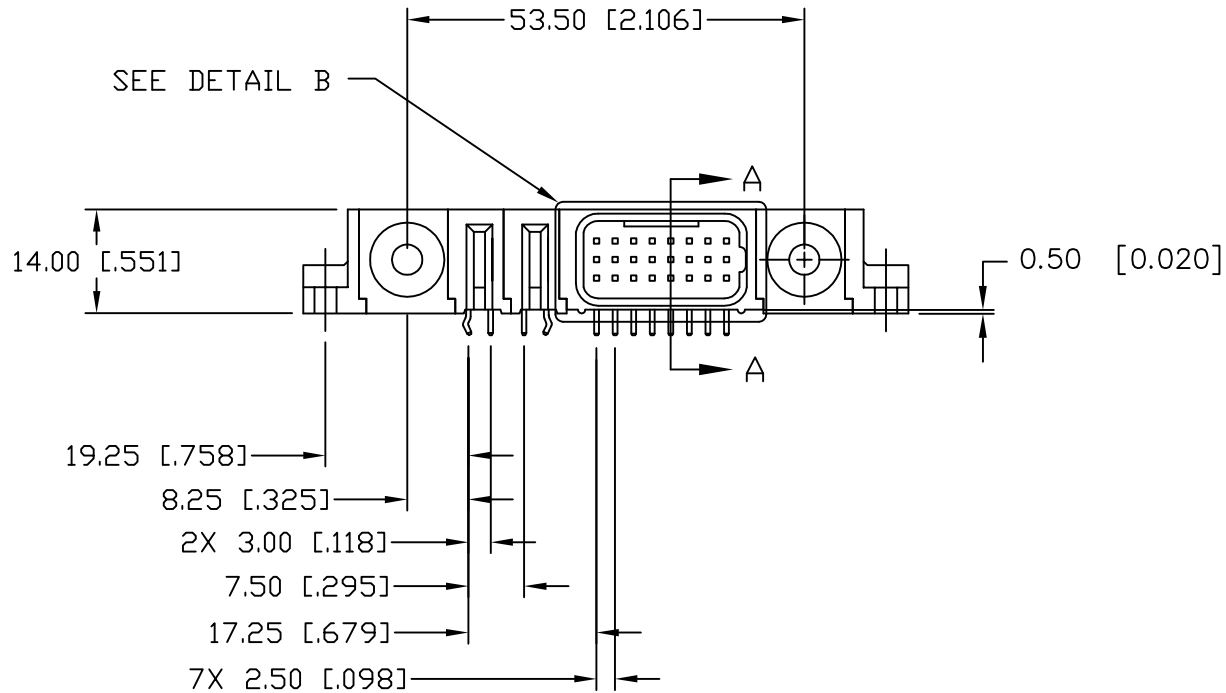
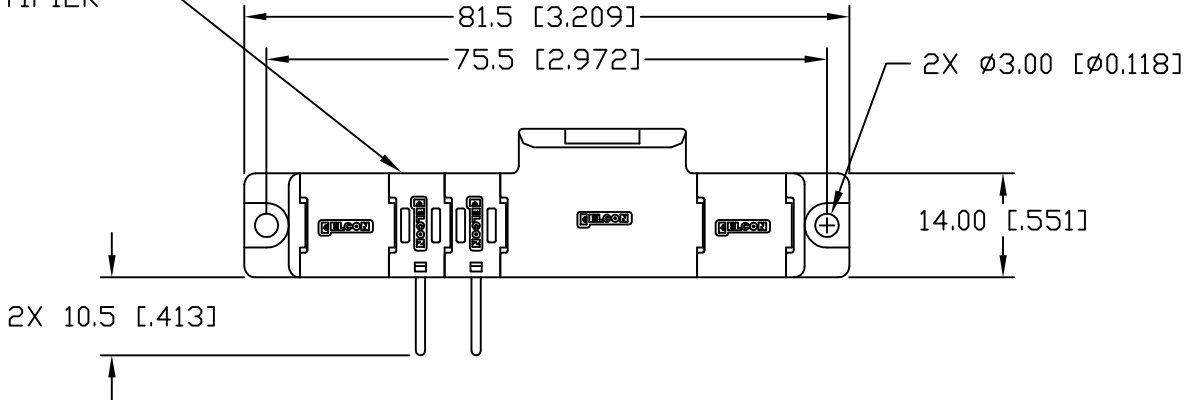
- KEY:
- ⊠ STANDARD PIN
 - PREMATE PIN (23 PLACES)

DETAIL B
SCALE 2:1



SECTION A-A
SCALE: 2:1

LOCATION OF
IDENTIFIER



6646934-1		ITEM	QTY	PART NUMBER	DESCRIPTION					
TYCO PART NUMBER		LIST OF MATERIALS								
UNLESS OTHERWISE SPECIFIED, DIMENSIONS IN METRIC [INCHES]	DRAWN		DATE		<div><div>tyco</div><div>Electronics</div></div> <div>Tyco Electronics Corporation Menlo Park, Ca 94025</div> <div>ELCON</div>					
	ORANDO LI		08/22/13							
	CHECKED				TITLE CONNECTOR, PIN, RIGHT ANGLE SHORT SOLDER TAILS FLATPAQ					
	APPROVED									
	APPROVED									
N/A .5"		---		08/22/13		SIZE	DWG NUMBER	REV.		
.25 [.010] .5 [.020]		---		08/22/13		B	C_6646934	A		
OF MATERIALS		ACAD FILE NUMBER			6646934A.DWG			DWG SCALE	1 = 1	SH 2 OF 2

<div><div><div><div><div></div><div></div></div><div><div></div><div></div></div></div><div><div></div><div></div></div></div><div>← MM INCH</div><div>OR MM [INCH]</div><div>THIRD ANGLE PROJECTION</div></div>		UNLESS OTHERWISE SPECIFIED, DIMENSIONS ARE IN METRIC [INCHES]
		<u>TOLERANCES</u>
		FRACTIONS ± N/A
		ANGLES ± .5°
		DECIMALS
		.XX ± .25 [.010]
		.X ± .5 [.020]
	C-6646934	MATERIAL
NEXT ASSY	USED ON	SEE LIST OF MATERIALS
APPLICATION		

Mouser Electronics

Authorized Distributor

Click to View Pricing, Inventory, Delivery & Lifecycle Information:

[TE Connectivity:](#)

[6646934-1](#)