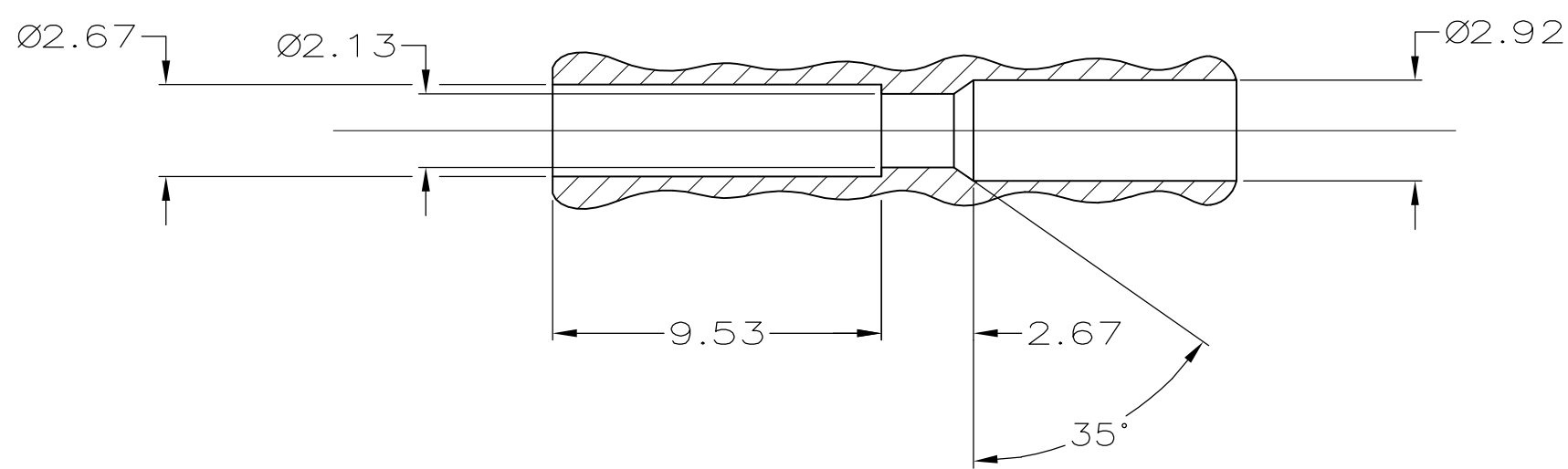
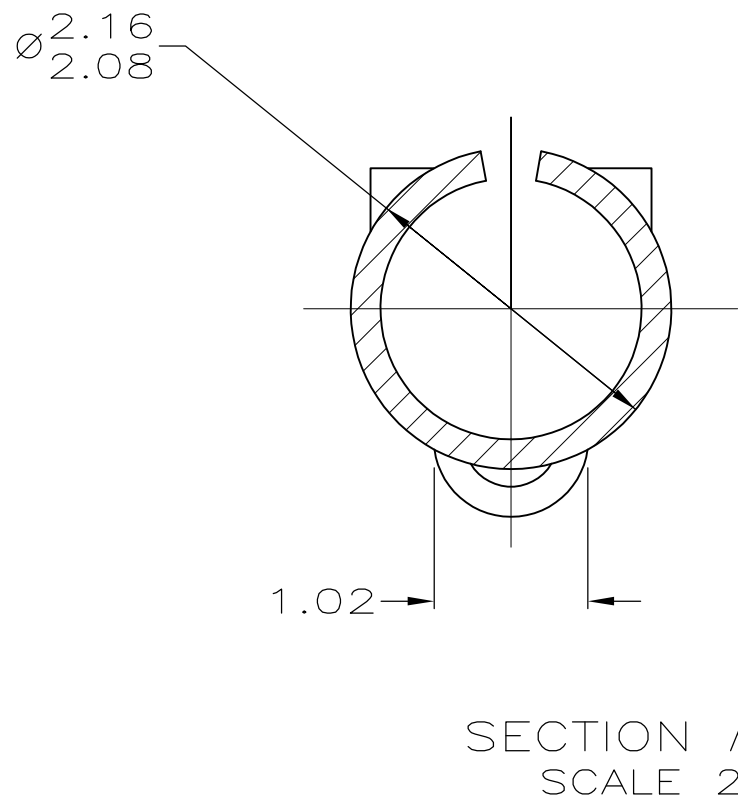
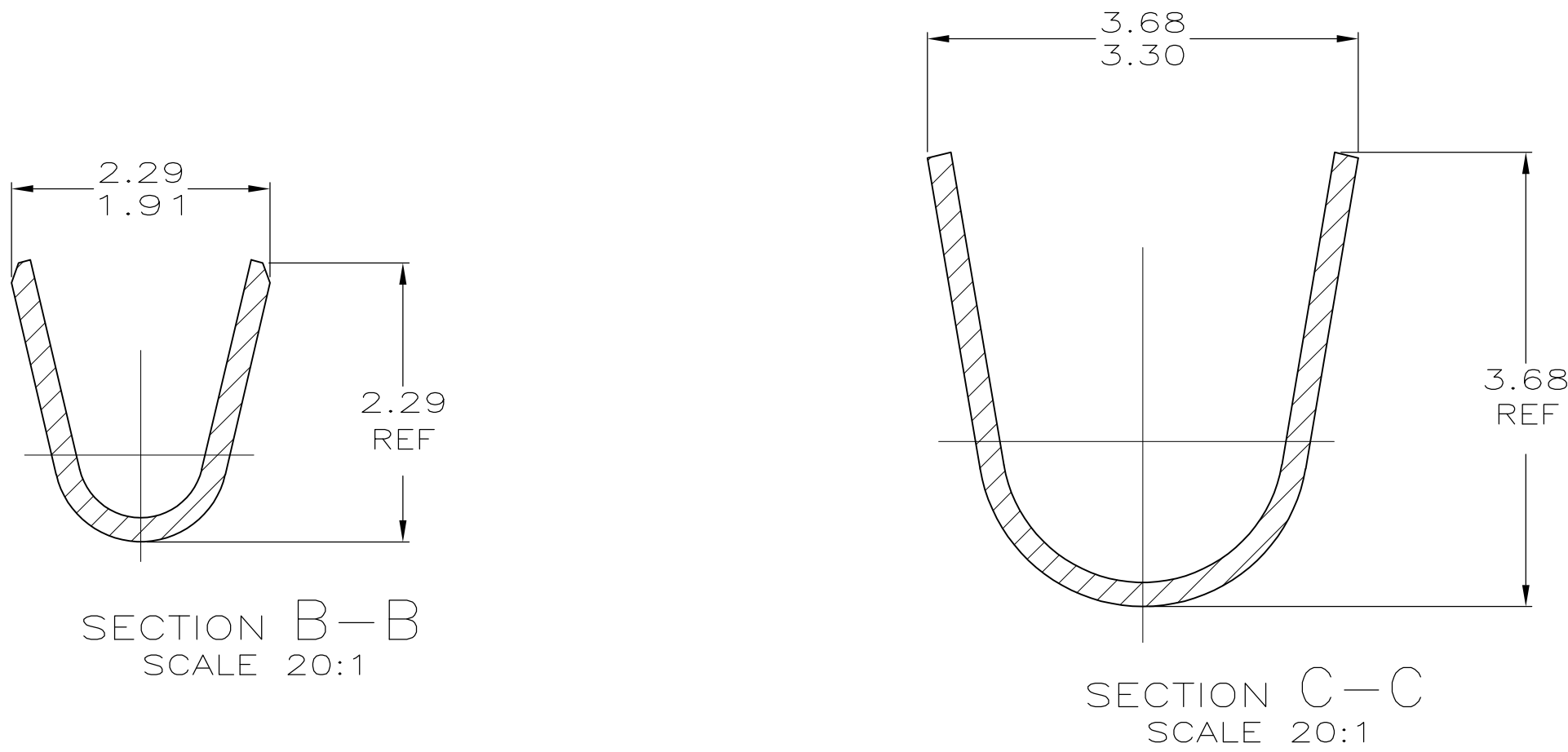
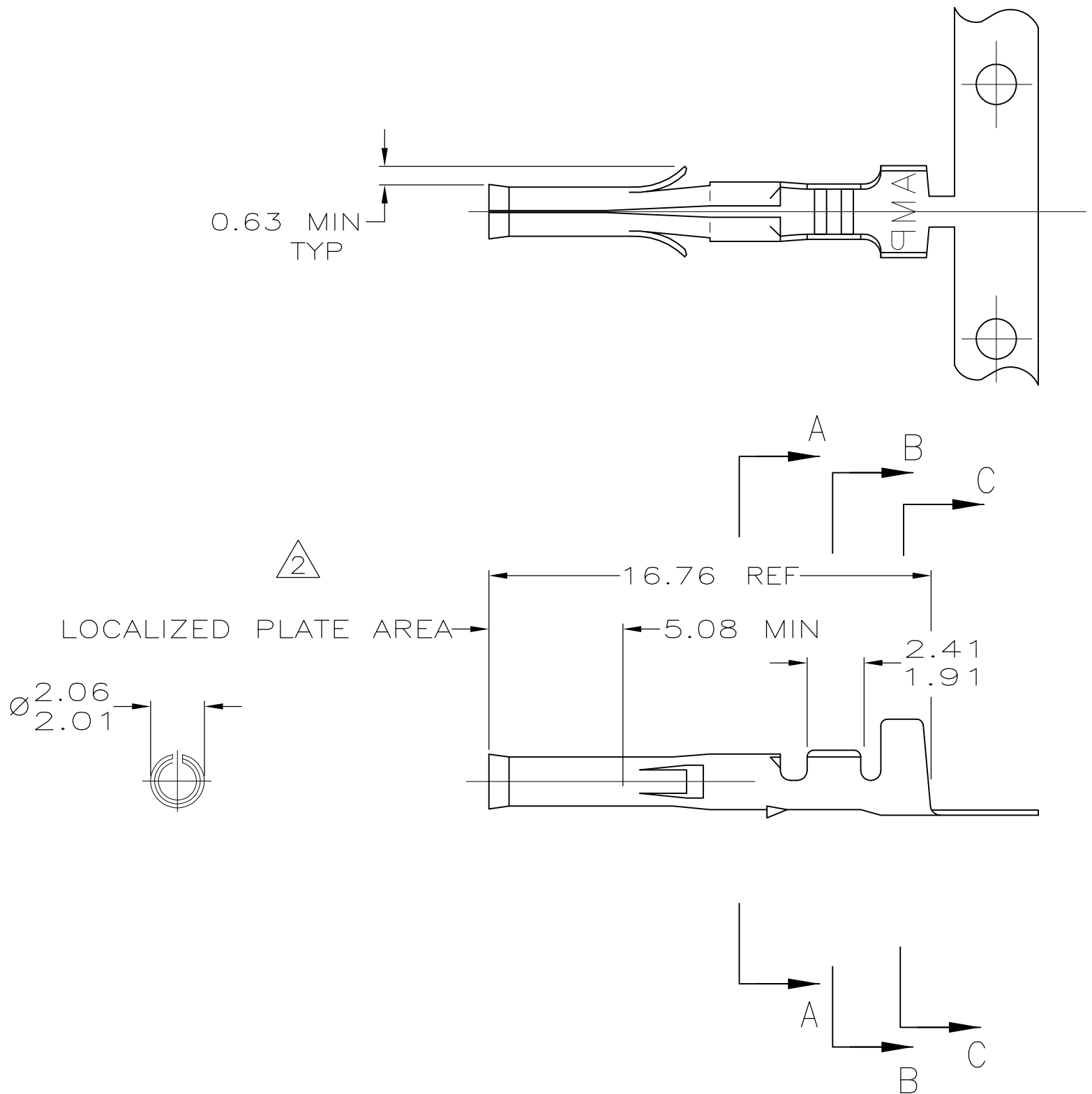


REVISIONS					
P	LTR	DESCRIPTION	DATE	DWN	APVD
S2		REVISED PER ECR-16-017000	07DEC16	N.L	D.Z



TYPICAL RECEPTACLE CAVITY SECTION
REFERENCE



TYPICAL PLUG CAVITY SECTION
REFERENCE

- 2. 0.0008 MIN GOLD INSIDE RECEPTACLE IN LOCALIZED PLATE AREA, OVER 0.0008 MIN NICKEL.
- 3. EITHER CAVITY WILL ACCEPT RECEPTACLE 350628,640392 OR PIN 350629,640391.
- 4. REELED ON PLASTIC REELS.
- 5. DOUBLE BAGGED VERSION OF 350628-8

-	-
.660	16.76
.375	9.53
.330	8.38
.200	5.08
.145	3.68
.130	3.30
.115	2.92
.110	2.79
.105	2.67
.095	2.41
.090	2.29
.085	2.16
.084	2.13
.082	2.08
.081	2.06
.079	2.01
.075	1.91
.050	1.27
.040	1.02
.025	0.63
.008	0.20
.005	0.13
.000030	0.0008
IN	MM
CONVERSION TABLE	

PRE-TIN	0.20 BRASS	1.27-2.79	24-18	350628-9
PRE-TIN	0.20 BRASS	1.27-2.79	24-18	350628-8
2	0.20 PH.BRZ.	1.27-2.79	24-18	350628-6
2	0.20 BRASS	1.27-2.79	24-18	350628-5
PRE-TIN	0.20 PH.BRZ.	1.27-2.79	24-18	350628-2
PRE-TIN	0.20 BRASS	1.27-2.79	24-18	350628-1
FINISH	MATERIAL	INSULATION DIAMETER	WIRE RANGE	PART NO

METRIC

THIS DRAWING IS A CONTROLLED DOCUMENT.

DIMENSIONS:
INCHES

MATERIAL
SEE TABLE

TOLERANCES UNLESS OTHERWISE SPECIFIED:

0 PLC ± -
1 PLC ± -
2 PLC ± -
3 PLC ± 0.13
4 PLC ± - ± 0° 30'
ANGLES
SEE TABLE

WEIGHT
-

DWN
K. SALMON
9-30-91

CHK
R. SWING
9-30-91

APVD
C. CASH
10-1-91

NAME
TE Connectivity

PRODUCT SPEC
108-1037

APPLICATION SPEC
114-1013

SIZE
A1

CAGE CODE
00779

DRAWING NO
350628

RESTRICTED TO
-

CUSTOMER DRAWING

SCALE
5:1

SHEET
1 OF 1

REV
S2

Mouser Electronics

Authorized Distributor

Click to View Pricing, Inventory, Delivery & Lifecycle Information:

[TE Connectivity:](#)

[350628-8](#)