

MICRO SWITCH
 FREEPORT, ILLINOIS, U.S.A.
 A DIVISION OF HONEYWELL
 FED. MFG. CODE 91929

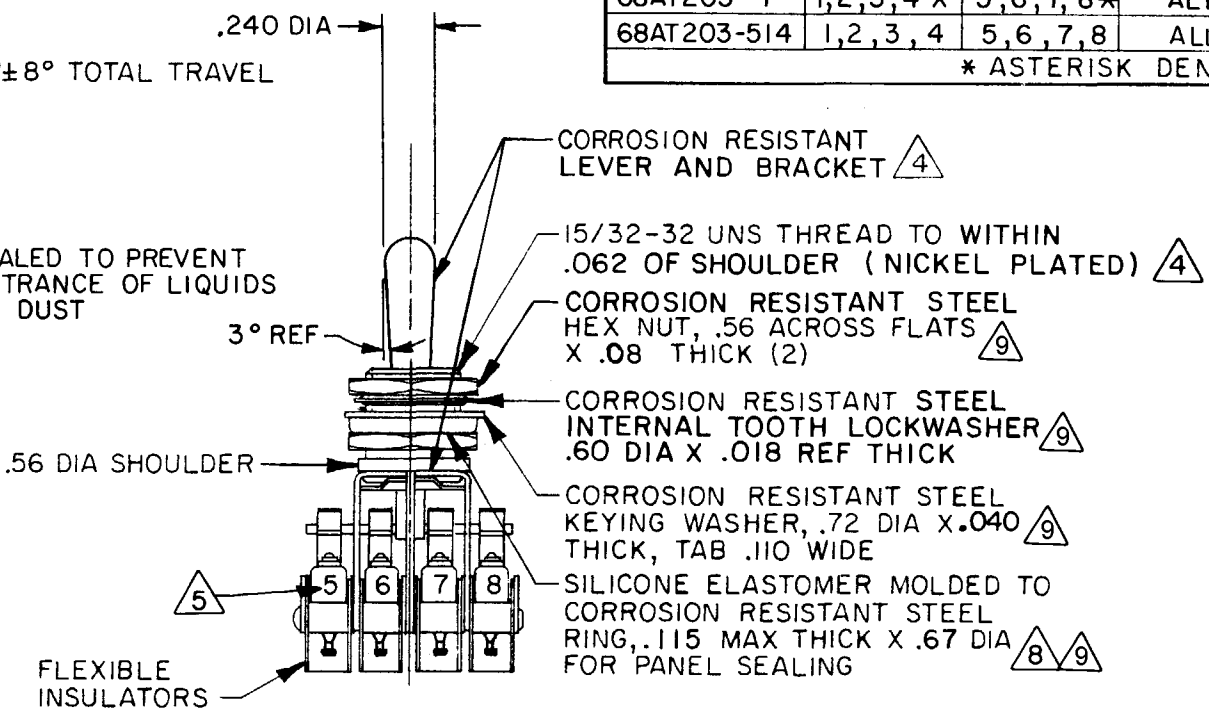
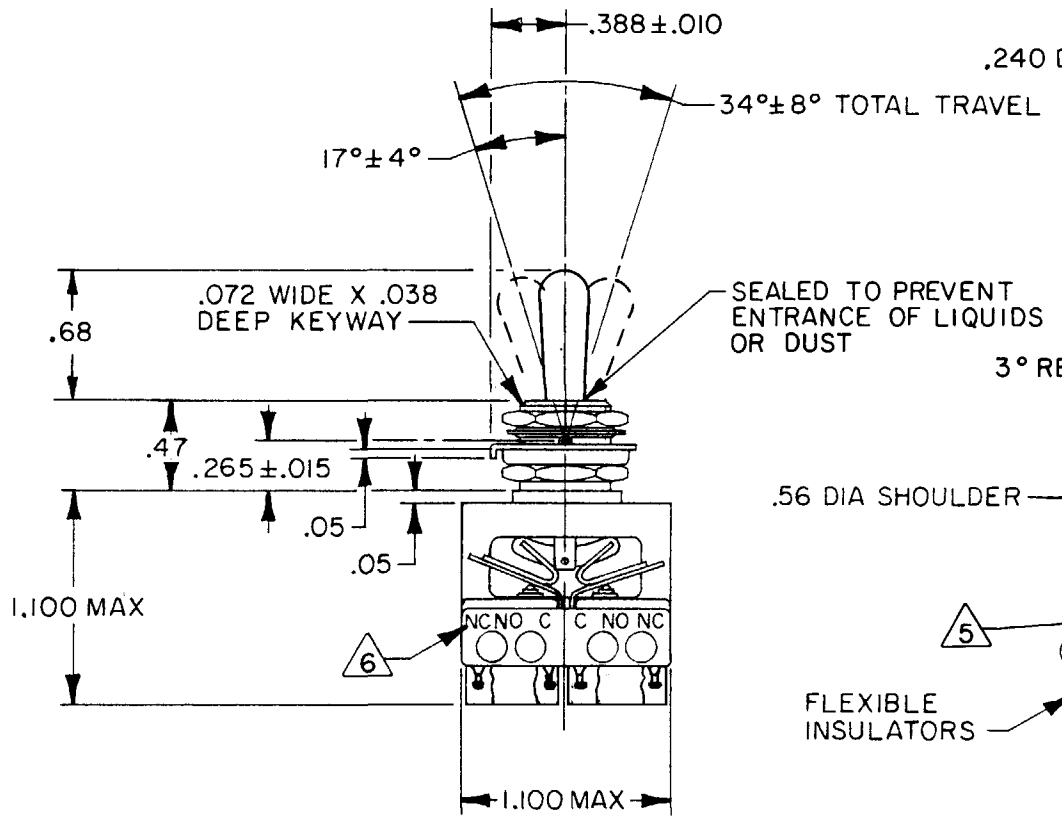
**ASSEMBLY -
 TOGGLE SWITCH**

CATALOG LISTING
68AT203 SERIES
CHART 1

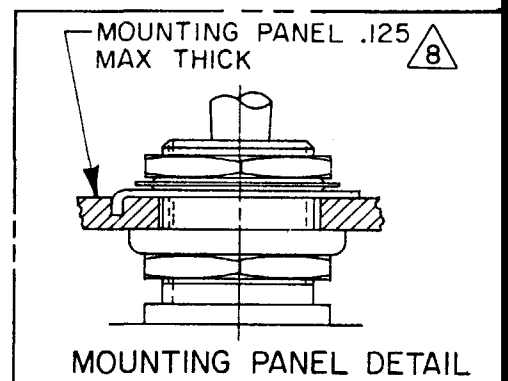
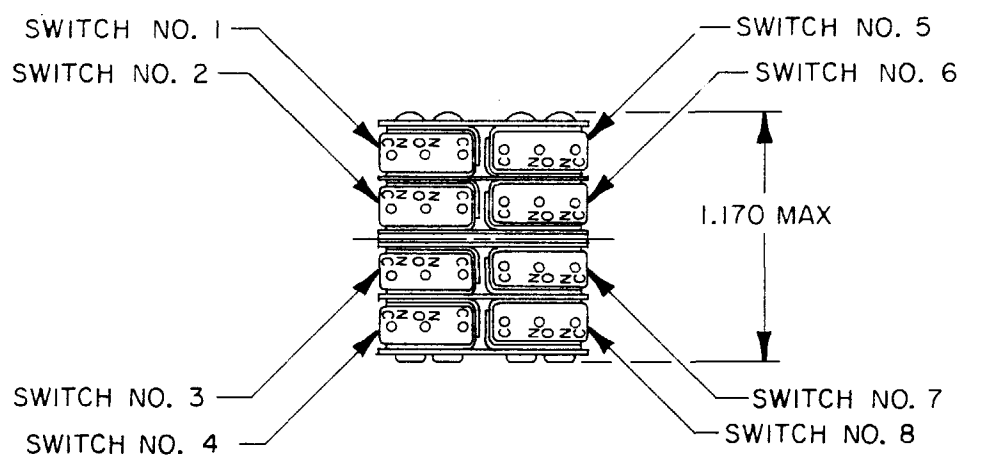
CATALOG LISTING	KEYWAY POSITION		CENTER POSITION		OPPOSITE KEYWAY POSITION	
	C-NC	C-NO	C-NC	C-NO	C-NC	C-NO
68AT203-1	1,2,3,4	5,6,7,8	ALL	NONE	5,6,7,8	1,2,3,4
68AT203-3	1,2,3,4	5,6,7,8	NONE	NONE	5,6,7,8	1,2,3,4
68AT203-5	1,2,3,4*	5,6,7,8*	ALL	NONE	5,6,7,8	1,2,3,4
68AT203-7	1,2,3,4*	5,6,7,8*	ALL	NONE	*5,6,7,8	1,2,3,4*
68AT203-514	1,2,3,4	5,6,7,8	ALL	NONE	*5,6,7,8	1,2,3,4*

* ASTERISK DENOTES MOMENTARY POSITION

68AT203 SERIES CHART 1 PAGE 1 OF 1
 DRAWING NUMBER M
 ISSUE 8
 RELEASE NO. PR-11674
 REVISIONS:
 A 05 DWG 047639
 B RE-INST 11674
 C 5193
 D 04000
 E 063228
 F 206022
 G JW 25 JUL 02
 CHECK CEB
 DRAWN S L B 3 NOV 82
 RASTER



- NOTES**
- UNIT INCLUDES "23SX" TYPE BASIC SWITCH (8) MATING CONTACT SURFACES ARE 24K GOLD OVERLAY
 - SWITCHES DO NOT NECESSARILY OPERATE SIMULTANEOUSLY
 - TERMINALS ARE PLATED FOR SOLDERING
 - MATTE FINISH ON LEVER AND BUSHING
 - SWITCH NUMBERS STAMPED ON END OF BASIC SWITCHES
 - TERMINAL DESIGNATION STAMPED ON BOTH SIDES OF UNIT
 - WHEN LEVER IS MOVED OUT OF A MAINTAINED POSITION, IT WILL RETURN OF ITS OWN ACCORD TO THE ORIGINAL POSITION OR THE ADJACENT POSITION. THE TOGGLE LEVER MAY HANG UP BETWEEN THE TWO ADJACENT POSITIONS ONLY BY EXERTING CONSIDERABLE EFFORT
 - FOR PANEL SEAL TO BE EFFECTIVE MOUNTING HOLE IN PANEL SHOULD NOT EXCEED .500 DIA
 - HARDWARE FURNISHED ASSEMBLED WITH SWITCH OR IN PACKET PER MIL-PRF-8805



Furnished under United States Government Contract No. . Shall not be either released outside the Government, or used, duplicated or disclosed in whole or in part for manufacture or procurement, without the written permission of MICRO SWITCH, A Division of Honeywell, except for: (I) emergency repair or overhaul work by or for the Government, where the item or process concerned is not otherwise reasonably available to enable timely performance of the work; or (II) release to a foreign government, as the interests of the United States may require; provided that in either case the release, use, duplication or disclosure hereof shall be marked on any reproduction hereof in whole or in part.

CHARACTERISTICS

ELECTRICAL DATA
CONTACT ARRANGEMENT S P D T (8)

SCALE FULL
DO NOT SCALE PRINT
TOLERANCES APPLY TO DESIGN UNITS. CONVERSIONS ARE ONLY FOR REFERENCE. UNLESS NOTED, TOLERANCES ARE ±
DIM. TOL. DIM. TOL. mm mm/in in mm/in
NO PLACES X 1/04 X X 0.8/03
ONE PLACE X.X 0.4/018 X.XX 0.38/015
TWO PLACES X.XX 0.15/008 X.XXX 0.13/005
THREE PLACES X.XXX
ANGLES
DESIGN UNITS <input type="checkbox"/> METRIC <input checked="" type="checkbox"/> US CUSTOMARY
THIRD ANGLE PROJECTION
WEIGHT .09 LB APPROX

DETAIL RATING CHART		AMPERES SEA LEVEL		AMPERES 50,000 FT	
VOLTS	CYCLE	RES	IND	RES	IND
28	DC	1	.5	1	.5

Mouser Electronics

Authorized Distributor

Click to View Pricing, Inventory, Delivery & Lifecycle Information:

[Honeywell:](#)

[68AT203-1](#) [68AT203-5](#)