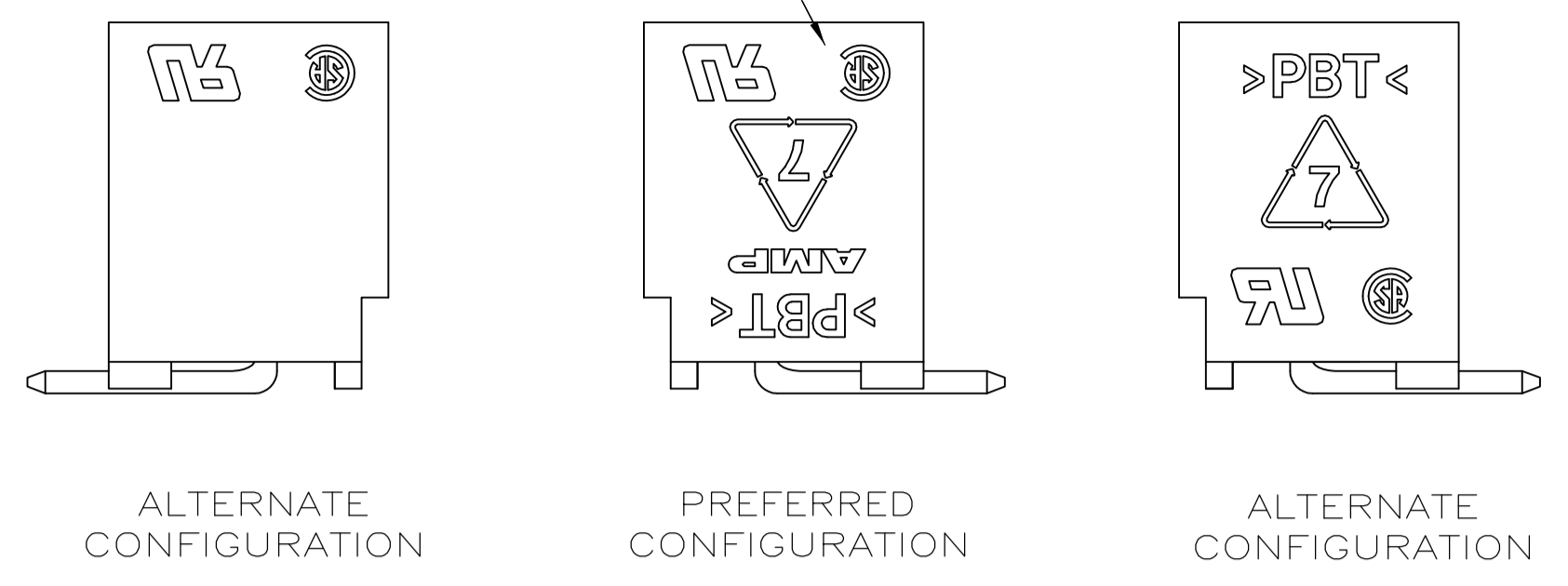
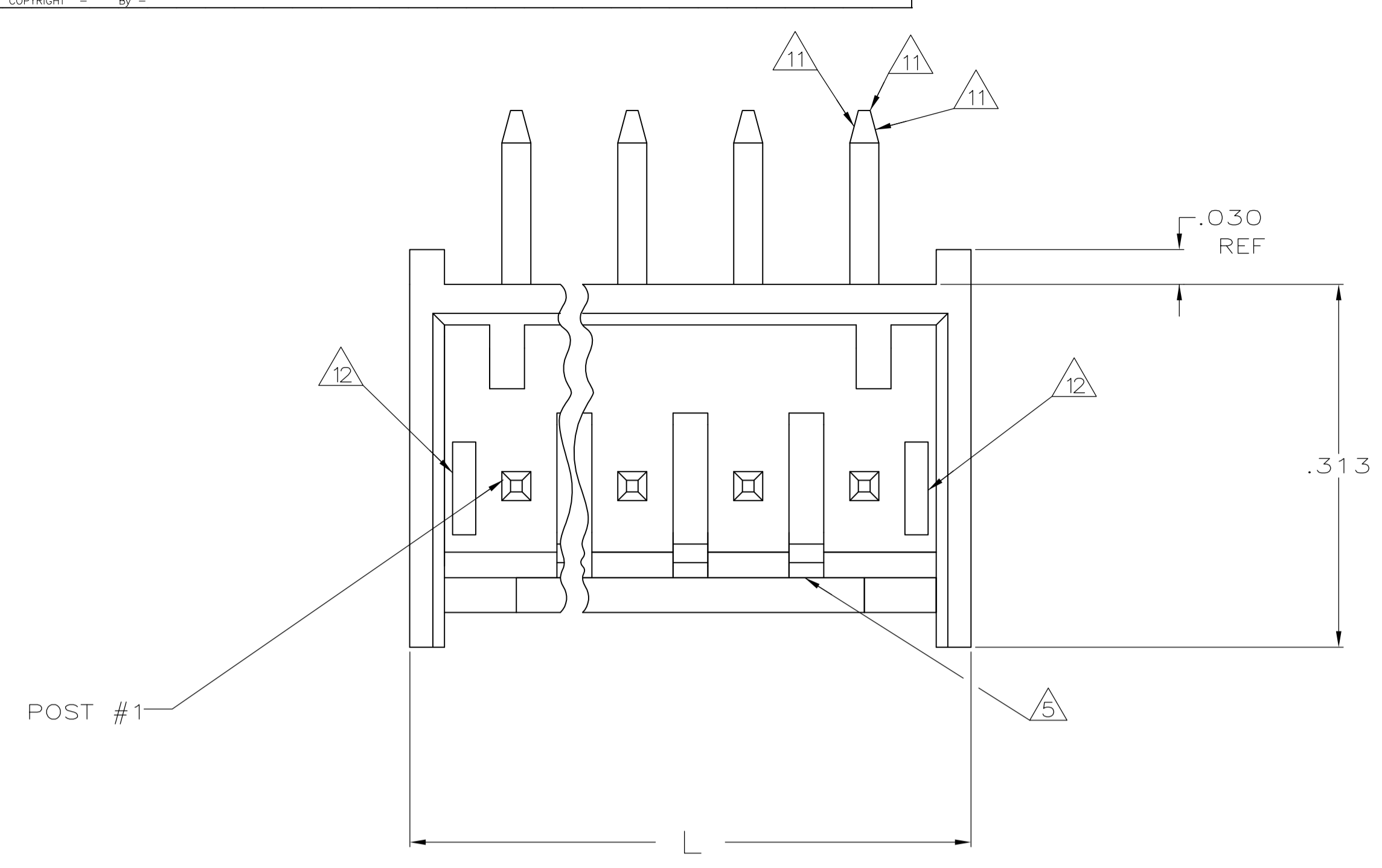
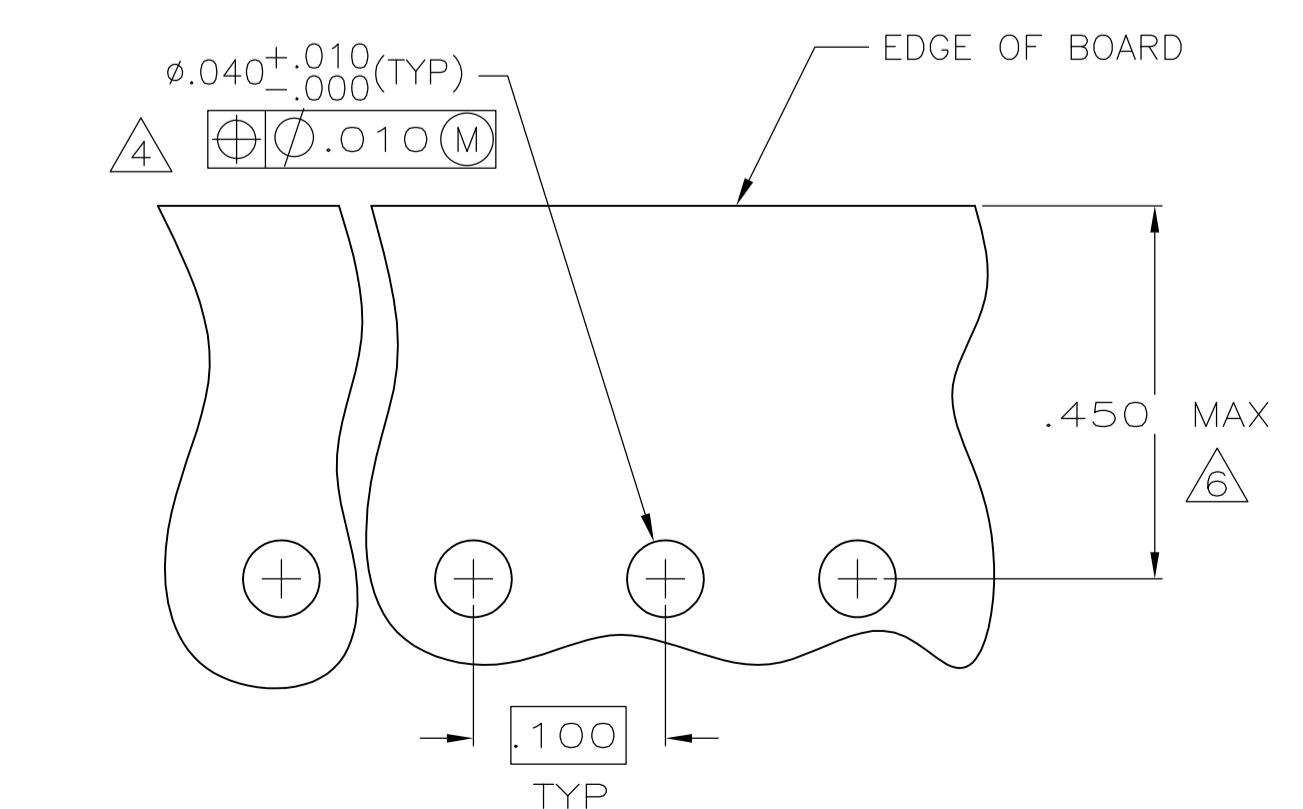
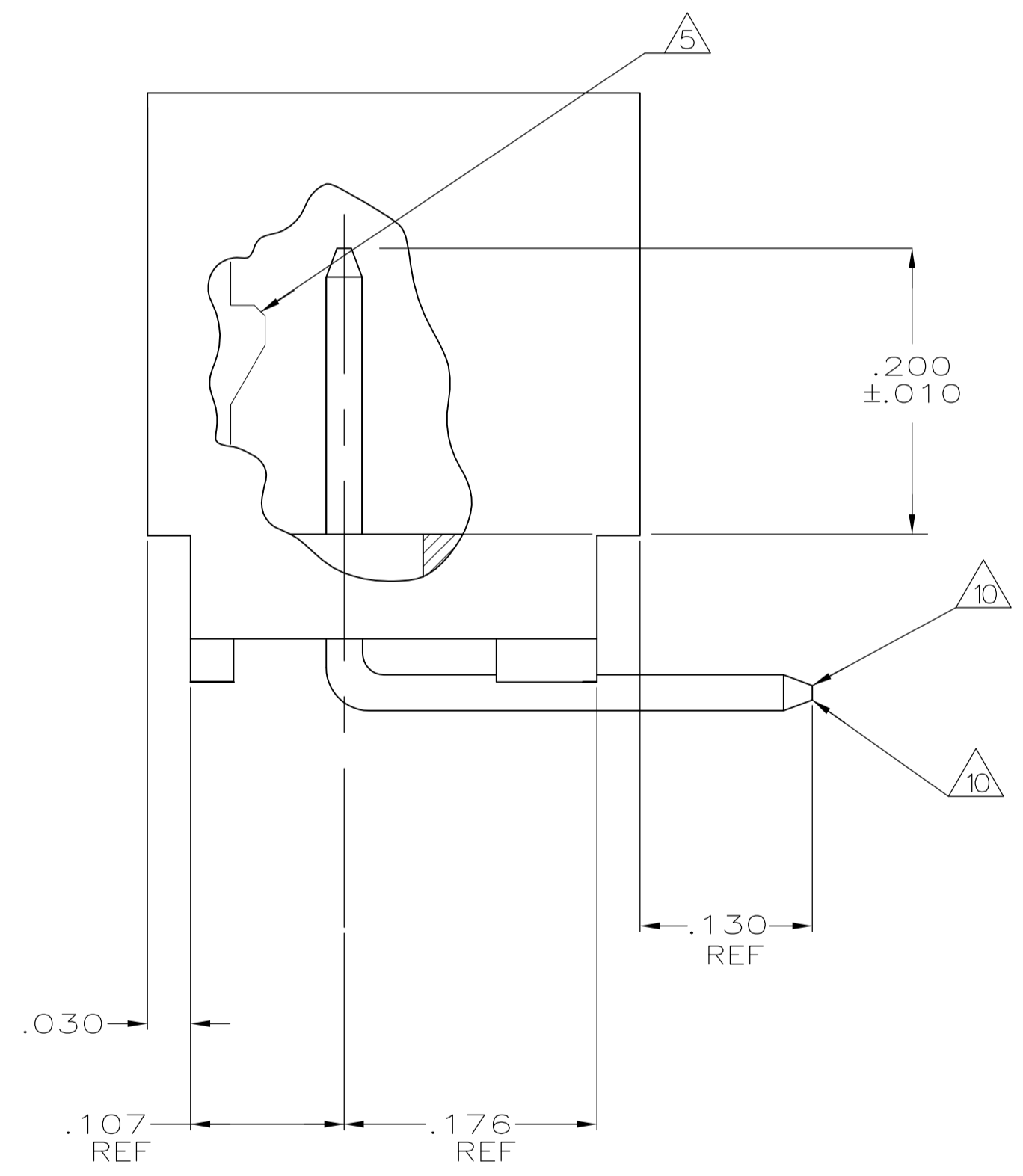
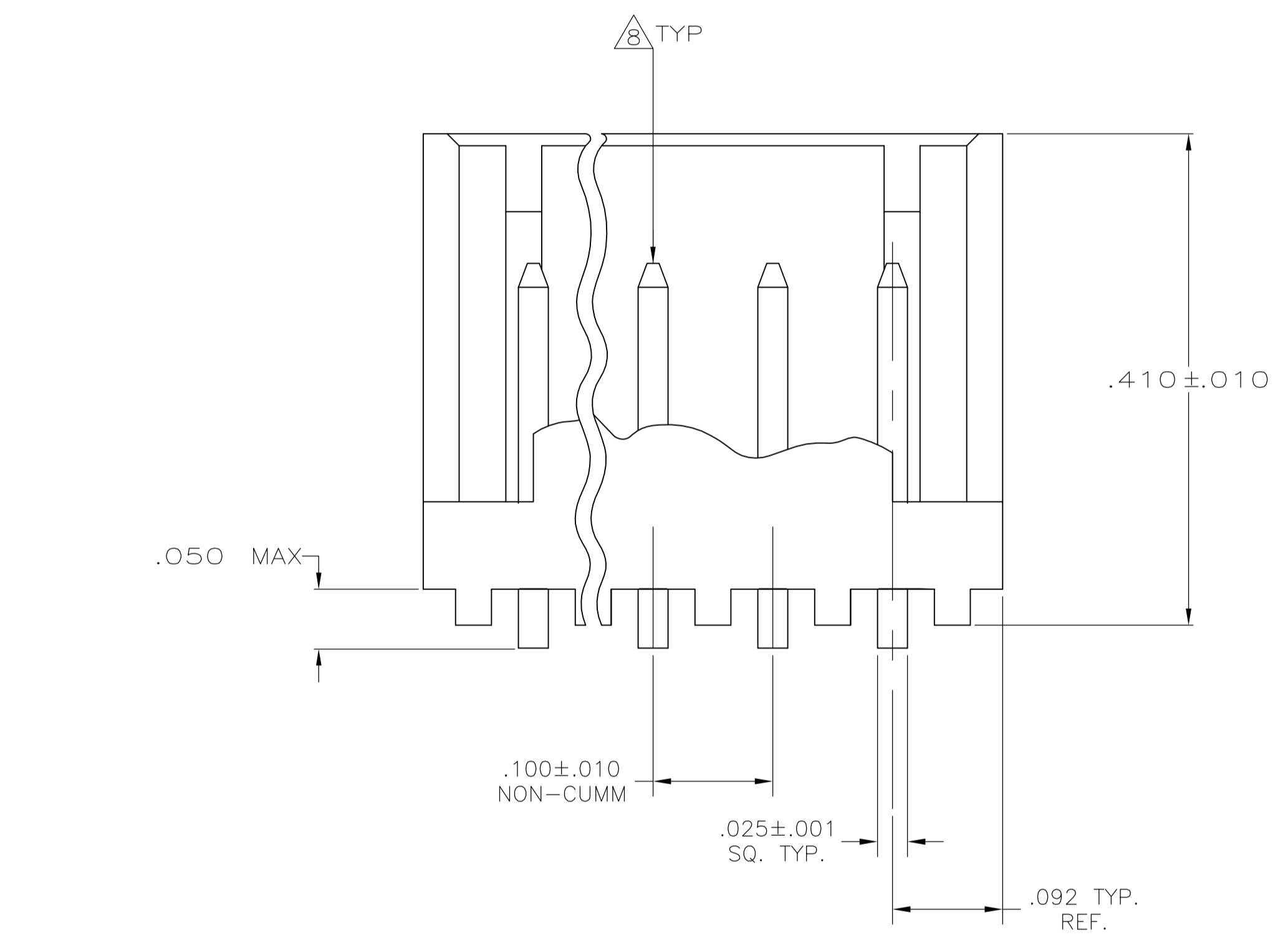


REVISONS		DATE	OWN	APVD
REV	DESCRIPTION			
H	REVISED PER ECO-11-006470	12JUL11	HMR	SM



POSSIBLE MARKING CONFIGURATIONS
SCALE 5:1



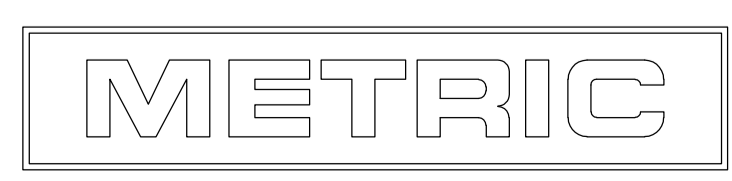
RECOMMENDED MOUNTING HOLE PATTERN FOR .063 THK PRINTED CIRCUIT BOARD

	.035	0.89	.176	4.47	—	—
.032	0.81	.130	3.3	—	—	
.030	0.76	.107	2.72	—	—	
.025	0.64	.100	2.54	.450	11.43	
.010	0.25	.092	2.34	.410	10.41	
.005	0.13	.063	1.6	.313	7.95	
.001	0.03	.050	1.27	.300	7.62	
.000	0	.040	1.02	.200	5.08	
IN	MM	IN	MM	IN	MM	

CONVERSION TABLE

- 1 MATERIAL: HEADER— POLYESTER UL94V-0 (BLACK)
POST— COPPER ALLOY.
- 2 SOLDER SIDE OF P.C. BOARD SHOWN.
- 3 PARTS COMPLY WITH AMP SOLDERABILITY SPEC 109-11-2.
- 4 ONE HOLE MAY BE UNDERSIZED (.032-.035 DIA) FOR ASSEMBLY RETENTION DURING WAVE SOLDERING.
- 5 LATCH DETENT FEATURE OCCURS 2 PLACES ON EACH END (MAXIMUM OF FOUR PER PART). FOR 2 THRU 5 CIRCUIT HEADERS, LATCH FEATURE OCCURS BETWEEN EACH CIRCUIT.
- 6 COORDINATE DIMENSION APPLIES FROM CENTER OF ACTUAL FEATURE.
- 7 POST: 100% MATTE TIN PLATED.
- 8 POST MUST WITHSTAND 3.0 LBS (13.3 N) MIN FORCE WITHOUT DISLODGING, EITHER DIRECTION.
- 9 UL AND CSA LOGO WILL APPEAR IN THIS AREA. AMP LOGO MAY APPEAR IN THIS AREA OR ON BOTTOM OF PART.
- 10 TWO SIDES OF TAPER, AS SHOWN, MUST BE PLATED. TYPICAL, BOTH ENDS.
- 11 TWO SIDES OF TAPER, AS SHOWN, AND TIP MAY BE UNPLATED. TYPICAL, BOTH ENDS.
- 12 SLOTS MAY OR MAY NOT APPEAR ON THESE PARTS.
- 13 POST: MATTE TIN-LEAD (93/7) PLATED.
- 14 OBSOLETE PART NUMBER.

1.484	37.69	14	3-644803-4				
1.384	35.15	13	3-644803-3				
1.284	32.61	12	3-644803-2				
1.184	30.07	11	3-644803-1				
1.084	27.53	10	3-644803-0				
.984	24.99	9	2-644803-9				
.884	22.45	8	2-644803-8				
.784	19.91	7	2-644803-7				
.684	17.37	6	2-644803-6				
.584	14.83	5	2-644803-5				
.484	12.29	4	2-644803-4				
.384	9.75	3	2-644803-3				
.284	7.21	2	2-644803-2	YES	7		
14	SUPERSEDED	1.484	37.69	14	1-644803-4		
14	SUPERSEDED	1.384	35.15	13	1-644803-3		
14	SUPERSEDED	1.284	32.61	12	1-644803-2		
14	SUPERSEDED	1.184	30.07	11	1-644803-1		
14	SUPERSEDED	1.084	27.53	10	1-644803-0		
14	SUPERSEDED	.984	24.99	9	644803-9		
14	SUPERSEDED	.884	22.45	8	644803-8		
14	SUPERSEDED	.784	19.91	7	644803-7		
14	SUPERSEDED	.684	17.37	6	644803-6		
14	SUPERSEDED	.584	14.83	5	644803-5		
14	SUPERSEDED	.484	12.29	4	644803-4		
14	SUPERSEDED	.384	9.75	3	644803-3		
14	SUPERSEDED	.284	7.21	2	644803-2	NO	13
		IN	MM	NO OF POSITIONS	PART NUMBER	LEADFREE	FINISH
		L		HEADER ASSEMBLY			



THIS DRAWING IS A CONTROLLED DOCUMENT.

DIMENSIONS: INCHES	TOLERANCES UNLESS OTHERWISE SPECIFIED:	DIN S. CARPENTER 28MAY2003	APPROV D. ROSSI 28MAY2003	NAME
0 PL ±	1 PL ±	2 PL ±	3 PL ± .005	4 PL ±
ANGLES ±				
MATERIAL	FINISH	WEIGHT	SIZE	CODE
	SEE TABLE		A1	00779

STE TE Connectivity

MTA-100 SHROUDED HEADER ASSEMBLY, FRICTION LOCK, RIGHT ANGLE POST, TIN OR TIN LEAD PLATED

00779-644803

CUSTOMER DRAWING SCALE 10:1 SHEET 1 OF 1 REV H

Mouser Electronics

Authorized Distributor

Click to View Pricing, Inventory, Delivery & Lifecycle Information:

[TE Connectivity:](#)

[2-644803-3](#)