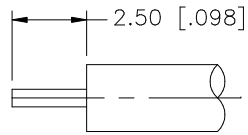
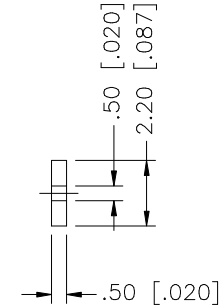
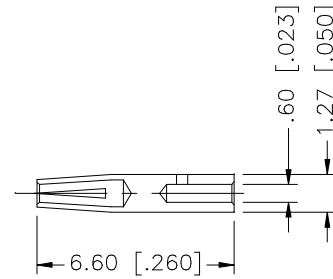
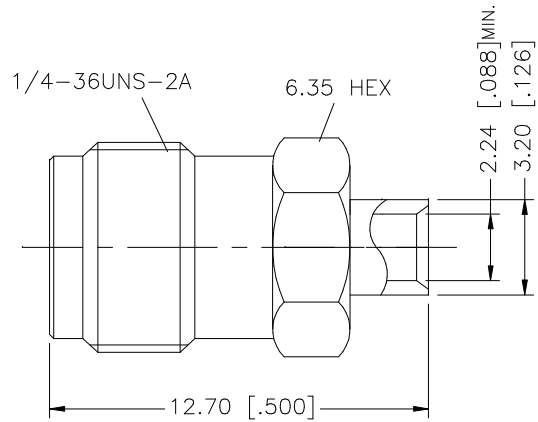


REV.	DATE	DESCRIPTION
NC	04/31/03	INITIAL RELEASE
A	10/27/05	MODIFY - INSULATOR NOW INTERNAL



RECOMMENDED CABLE STRIPPING DIMS.



NOTE:
1. CONTACT PIN TO SOLDER

REV.	DATE	DESCRIPTION	APPROVALS	DATE	Amphenol Connex				
8					SMA DIRECT SOLDER JACK (FOR .085", .086" CABLE)				
7									
6									
5									
4	INSULATOR	TEFLON	NATURAL	1	PART NO. 132103				
3	CONTACT PIN	BER. COPPER	GOLD	1					
2	INSULATOR	TEFLON	NATURAL	1	DWG. NO. 132103.DWG				
1	BODY	BRASS	GOLD	1					
<small>UNLESS OTHERWISE SPECIFIED DIMENSIONS ARE IN MILLIMETERS. DIMENSIONS IN [] ARE IN INCHES AND FOR CUSTOMER REFERENCE ONLY.</small> <small>UNLESS OTHERWISE SPECIFIED TOLERANCES FOR MILLIMETERS ARE: 0.5 - 8mm ± 0.20mm 8 - 30mm ± 0.40mm 30 - 120mm ± 0.50mm</small> <small>UNLESS OTHERWISE SPECIFIED TOLERANCES FOR INCHES ARE: .020 - .315 = ± 0.007" .315 - 1.180 = ± 0.015" 1.180 - 4.724 = ± 0.020"</small>					APPROVALS DRAWN G.R.S. CHECKED ISSUED SHEET 1 OF 1		DATE 10/27/05		SCALE NA
DO NOT SCALE DRAWING					CAD FILE C:/132/132103.DWG				

Mouser Electronics

Authorized Distributor

Click to View Pricing, Inventory, Delivery & Lifecycle Information:

[Amphenol:](#)

[132103](#)