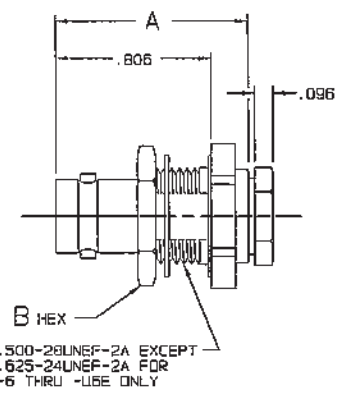


DATA CONTAINED IN THIS DOCUMENT IS PROPRIETARY TO TROMPETER ELECTRONICS INC. AND SHALL NOT BE DISCLOSED, COPIED OR USED FOR PROCUREMENT OR MANUFACTURE WITHOUT EXPRESS WRITTEN PERMISSION.

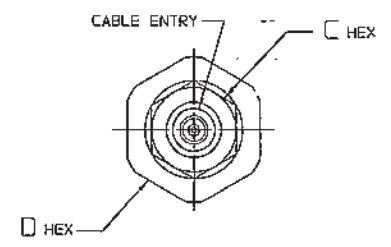
REVISIONS			1-0126		SH 1
REV	ECO	DESCRIPTION	DWN	APPROVED	DATE
U	16244	REVISED PER ECO 16244	L.M.	<i>M.M.C.</i>	10/20/68

DASH NO	FIG	CABLES ACCOMMODATED	A DIM	B HEX	C HEX	D HEX	E DIM	F DIA	ASSEMBLE PER
-1		RG-58, 142, 400							
-U1		ESSEX 621-715							
-2		RG-59							
-U2									
-2A		BELOEN 8279							
-U2A									
-2B		W.E.CO. 730A							
-U2B									
-3	1.3	RG-223	1.000	.625	.437	.687	.221	.510	
-U3							.218	.505	
-3A		RG-55							
-U3A									
-4		RG-122							
-U4		BELOEN 8218							
-5		RG-174							
-U5		RG-187							
-5A		RG-186							
-U5A									
-5B		HEWLETT-PACKARD 8120-1107							
-U5B									
-6	1	BELOEN 9231	1.030	.750	.500	.750	.284	.635	TAI-101
-U6							.281	.630	
-6E		RG-5							
-U6E		RG-6							
-21		RG-303, RG-141							
-U21									
-22		RG-180							
-U22									
-31		GRUMMAN GC875GP1							
-U31		RG-167 DBL SHLD							
-34	1.3	BELOEN 8228	1.000	.625	.437	.687	.221	.510	
-U34							.218	.505	
-35		275-3991 MICRODOT							
-U35		616-569 AMPEX							
-37		810 RAYCHEM							
-U37									
-41		RG-304							
-U41		9248 BELOEN							
-44		BRAND-REX B749							
-U44		GORE CGC032							
-51	1	88281 BELOEN	1.030	.750	.500	.750	.284	.635	
-U51							.281	.630	
-52		89120 BELOEN							
-U52									
-53	1.3	89555 BELOEN							
-U53									
-63		734A, AT&T	1.000	.625	.437	.687	.221	.510	
-U63							.218	.505	
-086	2	RG-405							
-U086									
-141		RG-402							TAI-130
-U141									

FIG 1
-1 SHOWN



RED INDICATES ORIGINAL



INCH	MM
.005	0.13
.096	2.44
.125	3.18
.218	5.54
.221	5.61
.250	6.35
.281	7.14
.284	7.21
.312	7.92
.437	11.10
.500	12.70
.505	12.83
.510	12.95
.625	15.88
.630	16.00
.635	16.13
.687	17.45
.750	19.05
.806	20.47
1.000	25.40
1.030	26.16
1.406	35.71
1.846	46.89

FIG 2
-086 SHOWN

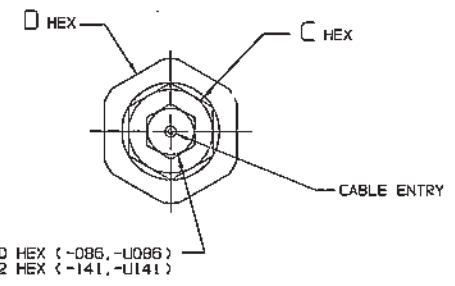
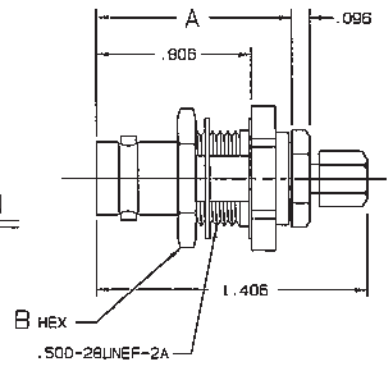
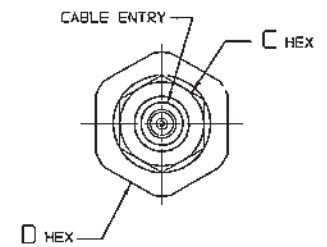
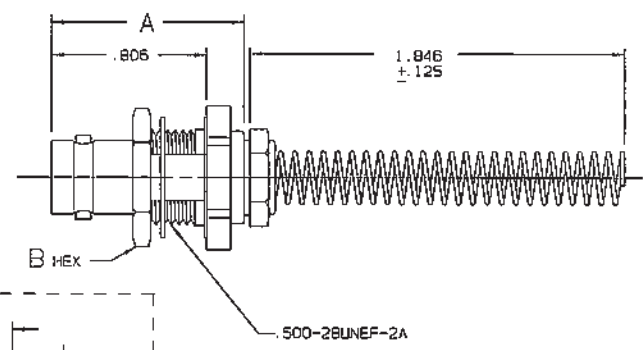
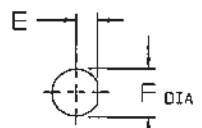


FIG 3
-1 SHOWN



IF BEND RELIEF SPRING REQUIRED (FIG 3) ADD SUFFIX "BR" TO MODEL NO (NOT AVAILABLE WITH CABLE GROUPS -6, -U6, -6E, -U6E, -51, -U51, -52, -U52 -63, -U63, -086, -U086, -141 & -U141)

5. FEMALE TYPE BNC COAXIAL BULKHEAD JACKS, BOTH 50 & 75 OHM VERSIONS
4. MAX PANEL THK .218
3. DASH NO DENOTES CABLE GROUP EXCEPT "U" PREFIX DENOTES 75 OHM VERSION
2. FINISH: TFS-1A (NICKEL)
1. ALL DIM ARE IN INCHES



RECOMMENDED
PANEL CUTOUT
SCALE: NONE

QTY	DESCRIPTION	PART NUMBER	ITEM
155-0317	TOL UNLESS SPECIFIED		
155-0338	.XX ± .005		
155-0297	.XXX ± .005		
155-0280	ANGLE:		
105-1016	DWN L.M. 10-5-06	MATERIAL	CODE IDENT
105-1004	CHK <i>ql 10-6-66</i>	14949	1-0126
105-0150	ENGR		
110-0003	APPR <i>Amig/ol</i>	SCALE 2/1	DATE 12/31/68
105-0717	NEXT ASSY		SHEET 1 OF 2

Mouser Electronics

Authorized Distributor

Click to View Pricing, Inventory, Delivery & Lifecycle Information:

[Cinch Connectivity Solutions:](#)

[BJ29-5](#)