

# REV. Status

REVISION -  
12/12/95 TS

REVISION A  
ADDED RoHS  
12/01/05 MP

REVISION B  
ADDED TEMP  
RATING  
4/28/15 MP

AUDIO COUPLING MINIATURE ENCAPSULATED TRANSFORMER DESIGNED TO OPERATE 10mW MAX IN PRIMARY AND REFLECT A PRIMARY SOURCE IMPEDANCE OF APPROXIMATELY 200KΩCT WITH 1KΩCT LOAD ON SECONDARY.

## A. Electrical Specifications (@ 20 ° C)

1. Pri Source Impedance; 200K Ω CT
2. Sec Load Impedance; 1K Ω CT
3. Pri DC Current; 0 mA MAX
4. Operating Level; 10mW MAX @ 300 Hz
5. Frequency Response (relative to 1 KHz);  
±2.0 dB, @ 300 Hz to 100 KHz
6. Longitudinal Balance; 60 dB MIN @ 1 KHz
7. DC Resistance;  
(1-3) 5300 Ω ±20%  
(4-6) 120 Ω ±20%
8. Turns Ratio; (1-3) : (4-6) = 14.1 : 1 ±2%
9. Dielectric Strength;  
500 Vrms 0.5 minute @ Pri - Sec

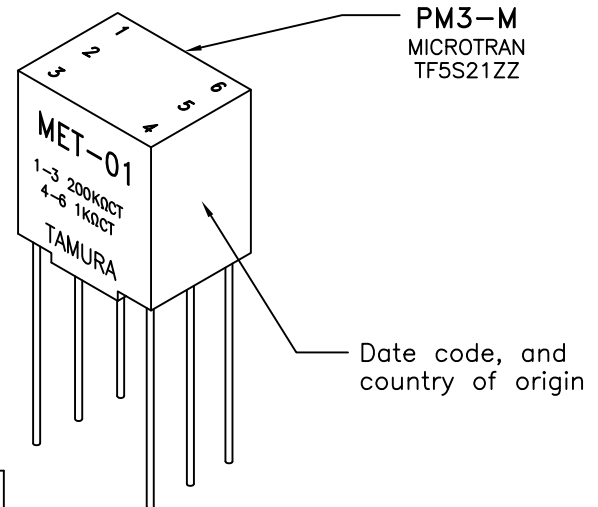
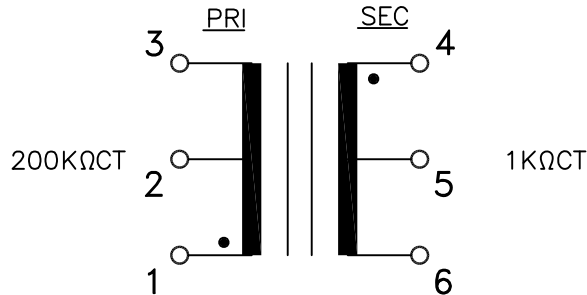


MODEL NUMBER  
**MET-01**

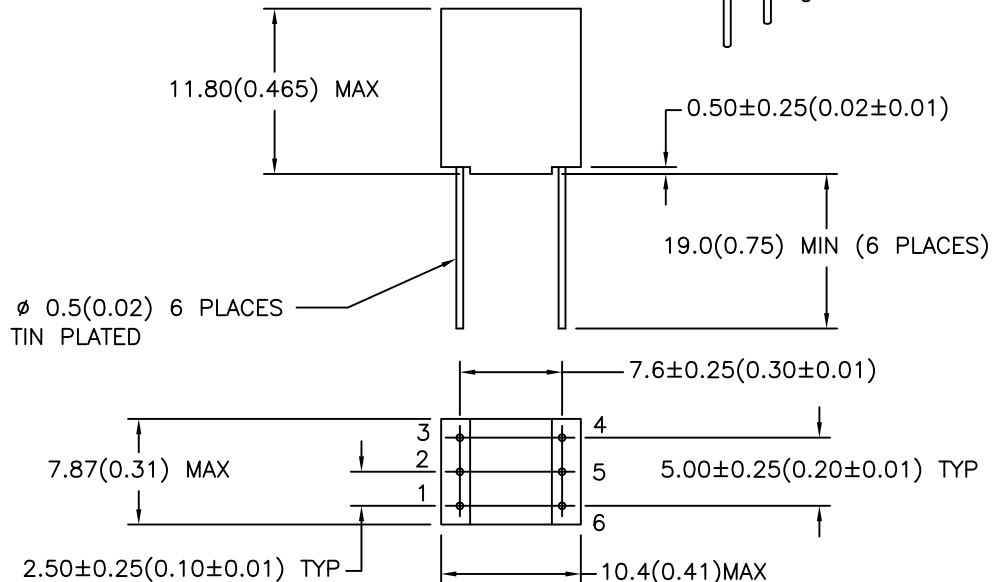
## B. Marking; MET-01, TAMURA, Primary and Secondary Impedance, PM3-M, MICROTRAN, TF5S21ZZ, date code and country of origin

## C. Operating Temperature: -20 to +85°C Storage Temperature: -55 to +105°C

## D. Schematic Diagram



## E. Mechanical Specifications



TOLERANCES (mm)
≤ 4 ± 0.2
4 ≤ 20 ± 0.3
20 ≤ 50 ± 0.4

PREPARED BY:

C. POPPE

ENGINEER:

MATHI P.

SAFETY ENGINEER

DRAWING CONTROL NO.	REV	MODEL DESCRIPTION	MODEL SPECIFICATION
P-A1-11490	B	AUDIO COUPLING MINIATURE ENCAPSULATED XFMR	MET-01
CONTENTS OF THIS DRAWING ARE SUBJECT TO CHANGE WITHOUT PRIOR NOTICE		<b>TAMURA CORPORATION OF AMERICA</b> 1040 SOUTH ANDREASEN DRIVE, #100 ESCONDIDO, CA. 92029 (951) 699-1270 FAX 7607400536	DIM: mm[In] SCL: 2/1 SH: 1 OF 1

APPROVED:

M. PITCHAI

PROPRIETARY NOTICE: THIS DRAWING PRINT OR DOCUMENT AND SUBJECT MATTER DISCLOSED HEREIN ARE PROPRIETARY ITEMS TO WHICH TAMURA RETAINS THE EXCLUSIVE RIGHT OF DISSEMINATION, REPRODUCTION, MANUFACTURE AND SALE. THIS DRAWING, PRINT OR DOCUMENT IS SUBMITTED IN CONFIDENCE FOR CONSIDERATION BY THE RECIPIENT ALONE UNLESS PERMISSION FOR FURTHER DISCLOSURE IS EXPRESSLY GRANTED IN WRITING.

# Mouser Electronics

Authorized Distributor

Click to View Pricing, Inventory, Delivery & Lifecycle Information:

[Tamura:](#)

[MET-01](#)