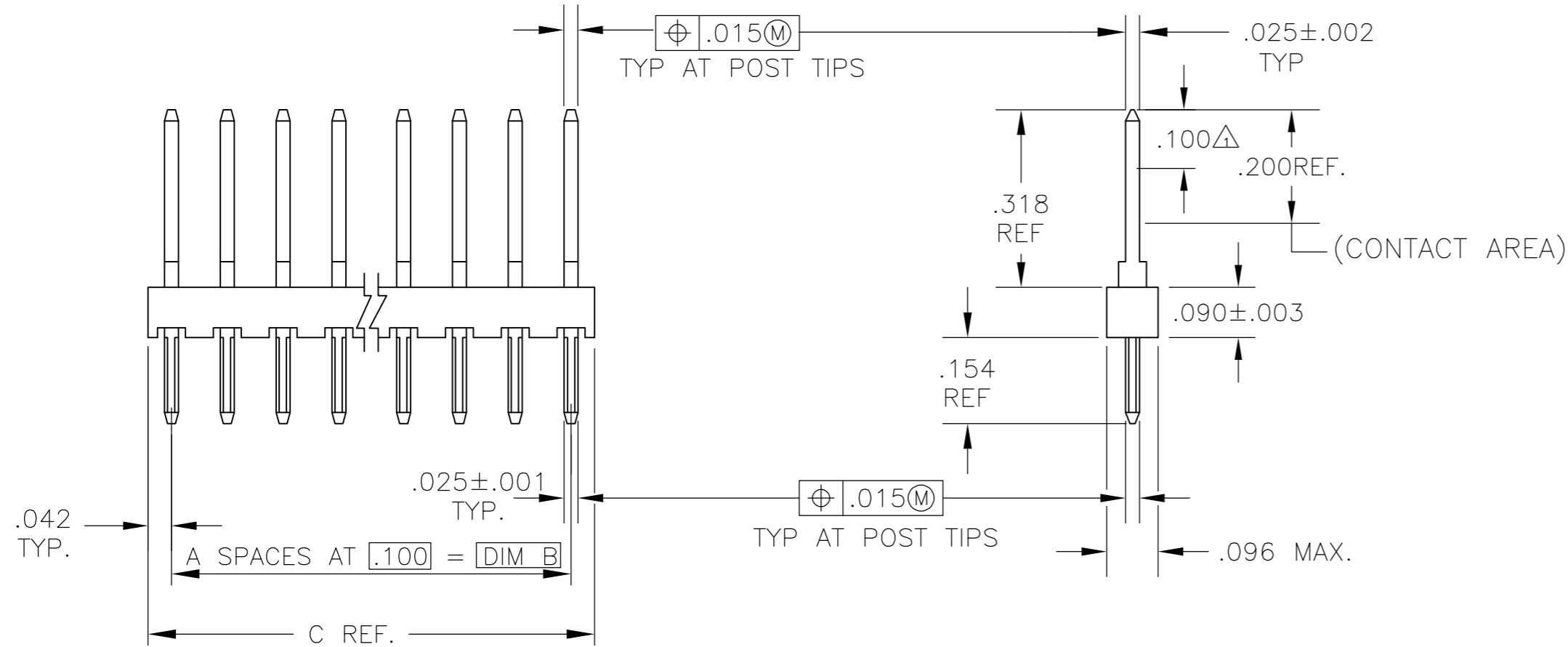
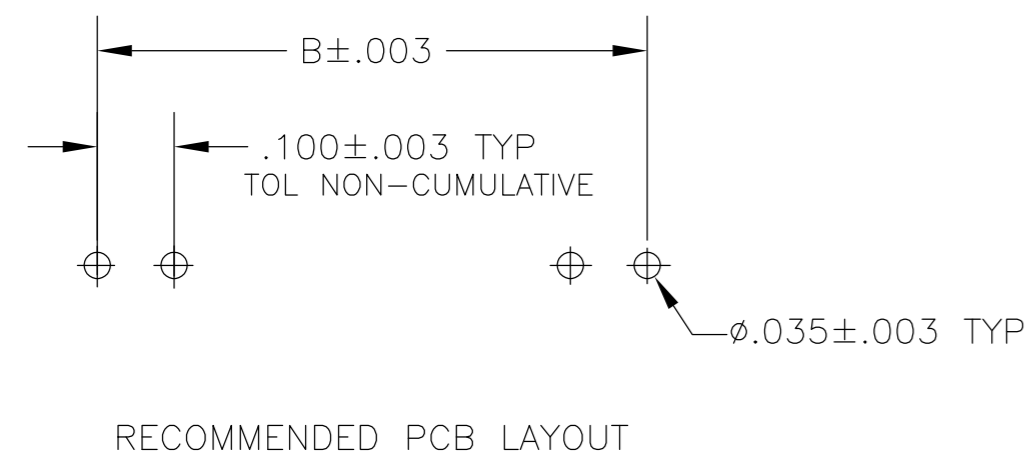


THIS DRAWING IS UNPUBLISHED. RELEASED FOR PUBLICATION
 © COPYRIGHT - By - ALL RIGHTS RESERVED.

REVISIONS					
P	LTR	DESCRIPTION	DATE	DWN	APVD
	G2	REDRAWN	17AUG2016	KJK	PS



- NOTES:
- 1 POINT OF MEASUREMENT FOR PLATING THICKNESS
 - 2 .000030 GOLD ON CONTACT AREA, GOLD FLASH ON SOLDER AREA, ALL OVER .000050 NICKEL
 - 3. MATERIAL: HOUSING- GLASS FILLED NYLON, COLOR- BLACK
POST - PHOSPHOR BRONZE
 - 4. TRUE POSITION TOLERANCE OF POST TIPS APPLIES WHEN
HEADERS ARE HELD FLAT AGAINST PRINTED CIRCUIT BOARDS



	3.984	3.900	39	△	40	4-87527-0
OBSOLETE	3.884	3.800	38	↑	39	3-87527-9
OBSOLETE	3.784	3.700	37		38	3-87527-8
OBSOLETE	3.684	3.600	36		37	3-87527-7
OBSOLETE	3.584	3.500	35		36	3-87527-6
OBSOLETE	3.484	3.400	34		35	3-87527-5
OBSOLETE	3.384	3.300	33		34	3-87527-4
OBSOLETE	3.284	3.200	32		33	3-87527-3
OBSOLETE	3.184	3.100	31		32	3-87527-2
OBSOLETE	3.084	3.000	30		31	3-87527-1
OBSOLETE	2.984	2.900	29		30	3-87527-0
OBSOLETE	2.884	2.800	28		29	2-87527-9
OBSOLETE	2.784	2.700	27		28	2-87527-8
OBSOLETE	2.684	2.600	26		27	2-87527-7
OBSOLETE	2.584	2.500	25		26	2-87527-6
OBSOLETE	2.484	2.400	24		25	2-87527-5
OBSOLETE	2.384	2.300	23		24	2-87527-4
OBSOLETE	2.284	2.200	22		23	2-87527-3
OBSOLETE	2.184	2.100	21		22	2-87527-2
OBSOLETE	2.084	2.000	20		21	2-87527-1
OBSOLETE	1.984	1.900	19		20	2-87527-0
OBSOLETE	1.884	1.800	18		19	1-87527-9
OBSOLETE	1.784	1.700	17		18	1-87527-8
OBSOLETE	1.684	1.600	16		17	1-87527-7
OBSOLETE	1.584	1.500	15		16	1-87527-6
OBSOLETE	1.484	1.400	14		15	1-87527-5
	1.384	1.300	13		14	1-87527-4
	1.284	1.200	12		13	1-87527-3
	1.184	1.100	11		12	1-87527-2
OBSOLETE	1.084	1.000	10		11	1-87527-1
OBSOLETE	.984	.900	9		10	1-87527-0
OBSOLETE	.884	.800	8		9	87527-9
OBSOLETE	.784	.700	7		8	87527-8
OBSOLETE	.684	.600	6		7	87527-7
OBSOLETE	.584	.500	5		6	87527-6
OBSOLETE	.484	.400	4		5	87527-5
	.384	.300	3		4	87527-4
	.284	.200	2		3	87527-3
	.184	.100	1		2	87527-2
OBSOLETE	.084	—	—	△	1	87527-1
	C	B	A	FINISH	NO OF POS	ASSEMBLY PART NUMBER

THIS DRAWING IS A CONTROLLED DOCUMENT.		DWN	KARTHIK J K	17AUG2016		TE Connectivity	
DIMENSIONS: INCHES		CHK	RAKSHITH NAYAK	17AUG2016		ASSEMBLY, MOD II, HEADER, SINGLE ROW, .100 CL, VERTICAL, .025 SQ POSTS	
TOLERANCES UNLESS OTHERWISE SPECIFIED:		APVD	PRASHANTH S	17AUG2016		-	
0 PLC ± - 1 PLC ± - 2 PLC ± - 3 PLC ± .005 4 PLC ± - ANGLES ± -		PRODUCT SPEC		-			
MATERIAL SEE NOTE 3		FINISH SEE NOTE 2		WEIGHT	SIZE	CAGE CODE	DRAWING NO
					A2	00779	C=87527
CUSTOMER DRAWING				SCALE	4:1	SHEET	1 OF 1
				REV	G2		

Mouser Electronics

Authorized Distributor

Click to View Pricing, Inventory, Delivery & Lifecycle Information:

[TE Connectivity:](#)

[87527-3](#)