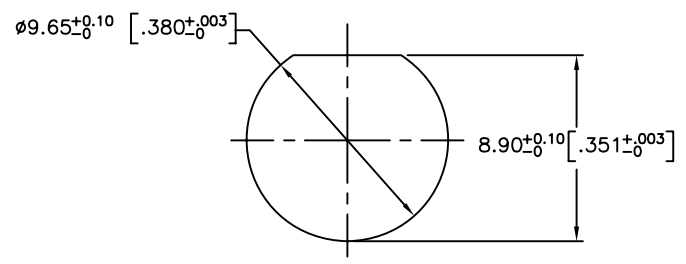
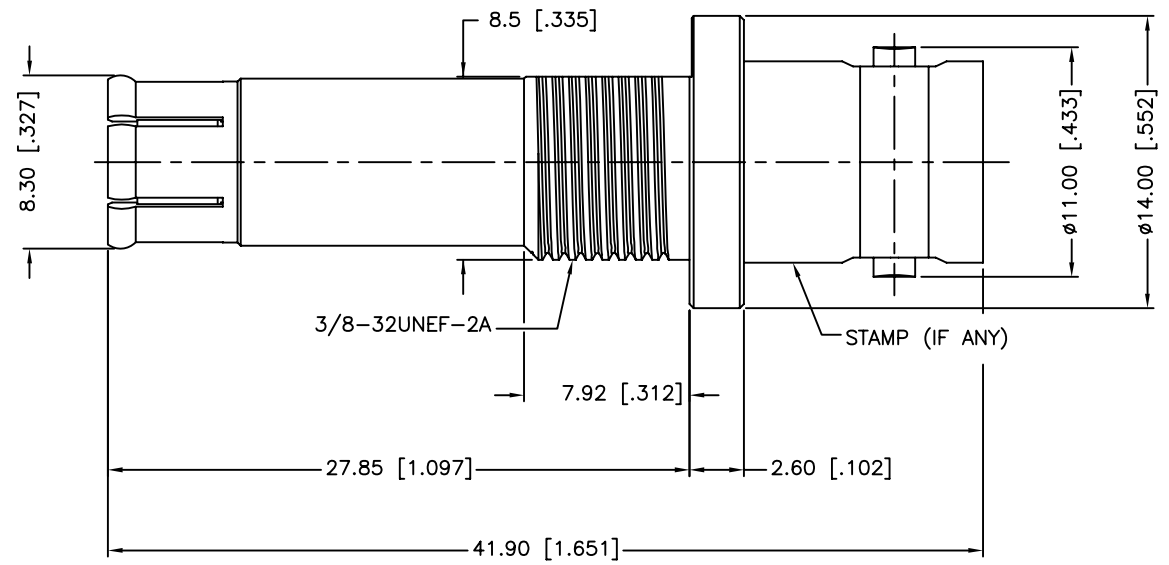
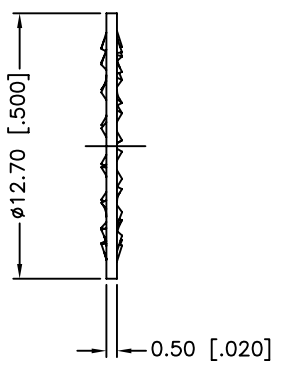
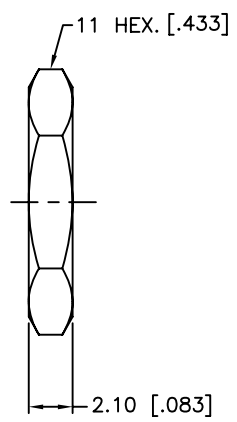


REV.	DATE	ECR NO.	DESCRIPTION
NC	09/24/09	XXXXXX	INITIAL RELEASE



RECOMMENDED MOUNTING HOLE



- 1. FREQUENCY RANGE: DC 0-3 GHZ
- 2. VSWR: 1.15, MAX.
- 3. MAX. PANEL THICKNESS=4.5 mm

7	HEX NUT	BRASS	NICKEL	1
6	LOCK WASHER	BRASS	NICKEL	1
5	RETAINER RING	BER. COPPER	NICKEL	1
4	INSULATOR	PTFE	NATURAL	1
3	CONTACT PIN	BER. COPPER	GOLD	1
2	LOCK RING	BRASS	NICKEL	1
1	BODY	BRASS	NICKEL	1
DESCRIPTION	MATERIAL	FINISH	QTY	

UNLESS OTHERWISE SPECIFIED DIMENSIONS ARE IN MILLIMETERS. DIMENSIONS IN [ ] ARE IN INCHES AND FOR CUSTOMER REFERENCE ONLY.

UNLESS OTHERWISE SPECIFIED TOLERANCES FOR MILLIMETERS ARE:  
0.5 - 8mm ± 0.20mm  
8 - 30mm ± 0.40mm  
30 - 120mm ± 0.50mm

UNLESS OTHERWISE SPECIFIED TOLERANCES FOR INCHES ARE:  
.020 - .315 ± 0.007"  
.315 - 1.180 ± 0.015"  
1.180 - 4.724 ± 0.020"

DO NOT SCALE DRAWING

APPROVALS	DATE
DRAWN M.ZHANG	09/24/09
CHECKED	
ISSUED	
SHEET 1 OF 1	
CAD FILE	C:/CONNEX/112769.DWG

**Amphenol Connex**

PART DESCRIPTION  
**BNC BULKHEAD JACK TO PUSH-ON PLUG ADAPTOR**

PART NO.  
**112769**

DWG. NO. 112769.DWG    REV. NC    SIZE A    SCALE NA

# Mouser Electronics

Authorized Distributor

Click to View Pricing, Inventory, Delivery & Lifecycle Information:

[Amphenol:](#)

[112769](#)