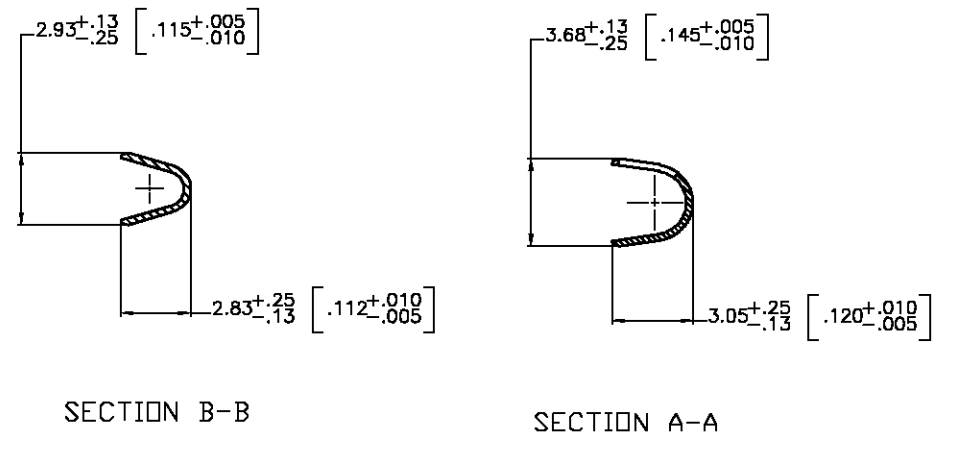
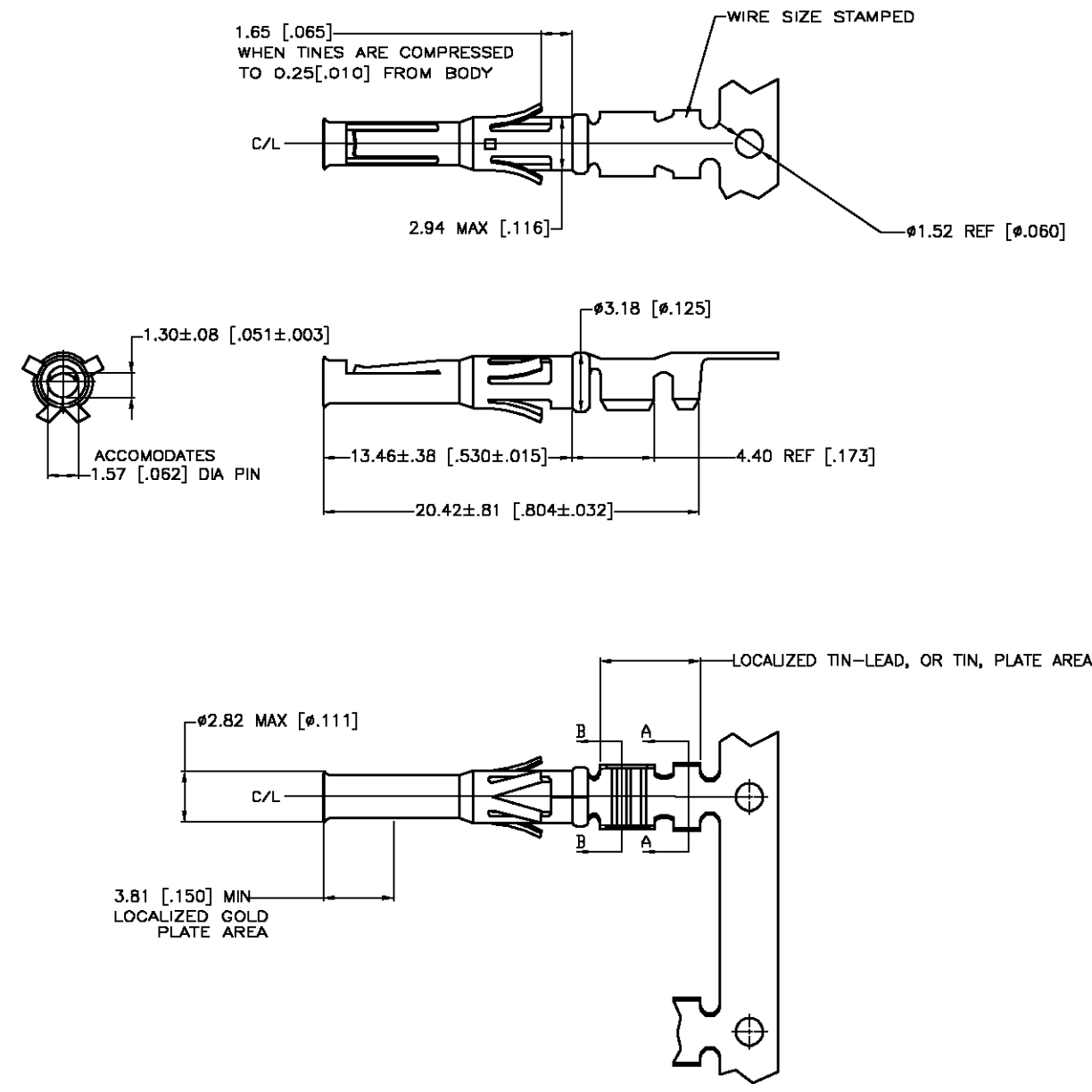


THIS DRAWING IS UNPUBLISHED. RELEASED FOR PUBLICATION  
 © COPYRIGHT BY TYCO ELECTRONICS CORPORATION. ALL RIGHTS RESERVED.

| LOC | DIST | REVISIONS   |                         |         |       |
|-----|------|-------------|-------------------------|---------|-------|
| P   | LTR  | DESCRIPTION | DATE                    | DWN     | APVD  |
| FT  | 10   | B           | REV PER EC 0G3B-0317-03 | 24APR03 | VF GS |



1. WIRE RANGE 18-16 AWG.
  2. INSULATION RANGE 2.54-2.03[100-.080] DIA.
  3. FOR LOOSE PIECE PART SEE DWG 66590.
- △ 0.76µm [.000030] MIN GOLD IN LOCALIZED GOLD PLATE AREA, 1.27µm [.000050] MIN TIN-LEAD IN LOCALIZED TIN-LEAD PLATE AREA, BOTH OVER 1.27µm [.000050] MIN NICKEL.
  - △ TIN PLATED.
  - △ GOLD PLATING PER MIL-G-45204, TIN PER MIL-T-10727 AND NICKEL PER QQ-N-290.
  - △ 0.76µm [.000030] MIN GOLD IN LOCALIZED GOLD PLATE AREA, 1.27µm [.000050] MIN TIN IN LOCALIZED TIN PLATE AREA, BOTH OVER 1.27µm [.000050] MIN NICKEL.

| DESCRIPTION                        | FINISH |         |
|------------------------------------|--------|---------|
| REVERSE REELED FOR MINI-APPLICATOR | △      | 66580-7 |
| REVERSE REELED FOR MINI-APPLICATOR | △4     | 66580-4 |
| REVERSE REELED FOR MINI-APPLICATOR | △4     | 66580-3 |
| REVERSE REELED FOR MINI-APPLICATOR | △5     | 66580-2 |
| REVERSE REELED FOR MINI-APPLICATOR | △5     | 66580-1 |

THIS DRAWING IS A CONTROLLED DOCUMENT.

|                            |   |  |   |                    |
|----------------------------|---|--|---|--------------------|
| DIMENSIONS:<br>MM [INCHES] | TOLERANCES UNLESS OTHERWISE SPECIFIED:<br>0 PLC ± -<br>1 PLC ± -<br>2 PLC ± 0.13 [.005]<br>3 PLC ± -<br>4 PLC ± -<br>ANGLES ± - | DWN V. FURLER 14MAY2003<br>CHK G. STEINHAUER 16MAY03<br>APVD G. STEINHAUER 16MAY03 | Tyco Electronics Corporation<br>Harrisburg, PA 17105  |                    |
| MATERIAL<br>BRASS MIL-C-50 | FINISH<br>SEE TABLE △   | PRODUCT SPEC<br>APPLICATION SPEC   | NAME<br>CONTACT, SOCKET, STRIP,<br>TYPE VI, MULTIMATE |                    |
|                            |   | WEIGHT<br>-  | SIZE<br>A3  | CAGE CODE<br>00779 |
|                            |   | DRAWING NO<br>C-66580  |   | RESTRICTED TO<br>- |
| CUSTOMER DRAWING           |   |  | SCALE<br>8:5  | SHEET<br>1 OF 1    |
|                            |   |  | REV<br>B  |                    |

# Mouser Electronics

Authorized Distributor

Click to View Pricing, Inventory, Delivery & Lifecycle Information:

[TE Connectivity:](#)

[66580-7](#)