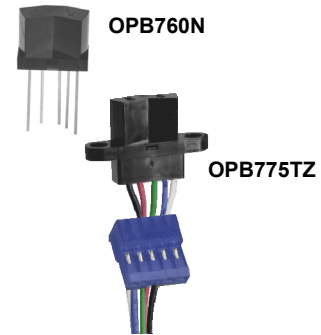


Photologic® Reflective Object Sensor



OPB760, OPB761, OPB762, OPB763 (Series N and T)
 OPB770, OPB771, OPB772, OPB773 (Series NZ and TZ)



Features:

- Choice of mounting configurations
- Choice of four output configurations
- .040" (10.160 mm) PCBoard mount (N and T series)
- 12" (304.800 mm) AWG 26 wires (NZ and TZ series)

Description:

The **OPB760N**, **OPB760T**, **OPB770N** and **OPB770T** series of reflective assemblies feature Photologic® output. The electrical output can be specified as either TTL Totem-Pole or TTL Open-Collector, either of which can be supplied with inverter or buffer output polarity.

OPB760N and **OPB760T** series devices are designed for PCBoard mounting and have 0.04" (10 mm) long leads.

OPB760T and **OPB770T** series devices are designed for remote mounting with two mounting tabs.

OPB770NZ and **OPB770TZ** series devices have 12" (305 mm) long, UL approved 26 AWG wires.

All devices in this series offer the added stability of a built-in hysteresis amplifier.

Custom electrical, wire and cabling and connectors are available. Contact your local representative or OPTEK for more information.

Applications:

- Non-contact Photologic® reflective object sensor
- Assembly line automation
- Machine automation
- Machine safety
- End of travel sensor
- Door sensor

Ordering Information				
Part Number	LED Peak Wavelength	Sensor Photologic®	Reflection Distance (Inch) Min / Max	Mounting
OPB760N	890 nm	Totem-Pole	0.080" / 0.220"	PCBoard .40" (10.160 mm) leads
OPB761N		Open Collector		
OPB762N		Inv-Totem-Pole		
OPB763N		Inv-Open Collector		
OPB760T		Totem-Pole		
OPB761T		Open Collector		
OPB762T		Inv-Totem-Pole		
OPB763T		Inv-Open Collector		
OPB770NZ		Totem-Pole		12" (304.800 mm) 26 AWG wire
OPB771NZ		Open Collector		
OPB772NZ		Inv-Totem-Pole		
OPB773NZ		Inv-Open Collector		
OPB770TZ		Totem-Pole		
OPB771TZ		Open Collector		
OPB772TZ		Inv-Totem-Pole		
OPB773TZ		Inv-Open Collector		



RoHS

General Note
 TT Electronics reserves the right to make changes in product specification without notice or liability. All information is subject to TT Electronics' own data and is considered accurate at time of going to print.

OPTEK Technology, Inc.
 1645 Wallace Drive, Carrollton, TX 75006 | Ph: +1 972 323 2200
www.optekinc.com | www.ttelectronics.com

Photologic® Reflective Object Sensor

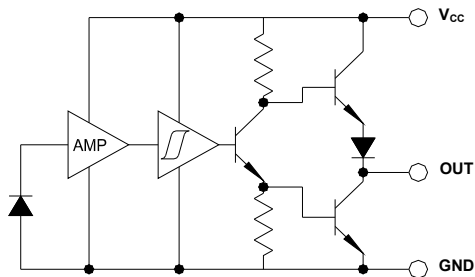


OPB760, OPB761, OPB762, OPB763 (Series N and T)

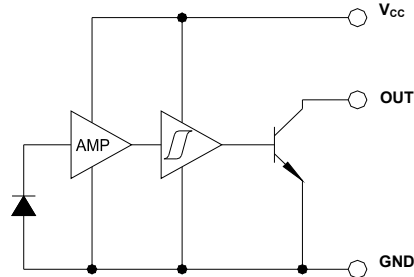
OPB770, OPB771, OPB772, OPB773 (Series NZ and TZ)

Electrical Specifications

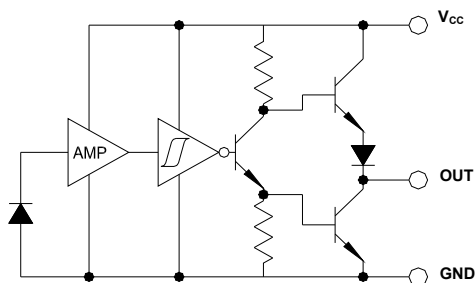
OPB760, OPB770 Buffered Totem-Pole



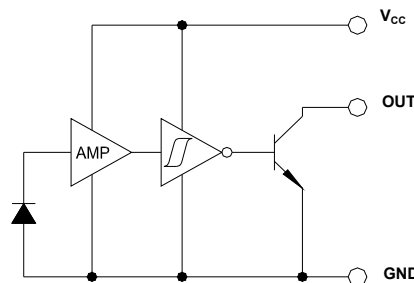
OPB761, OPB771 Buffered Open Collector



OPB762, OPB772 Inverted Totem-Pole



OPB763, OPB773 Inverted Open-Collector



General Note
TT Electronics reserves the right to make changes in product specification without notice or liability. All information is subject to TT Electronics' own data and is considered accurate at time of going to print.

OPTEK Technology, Inc.
1645 Wallace Drive, Carrollton, TX 75006 | Ph: +1 972 323 2200
www.optekinc.com | www.ttelectronics.com

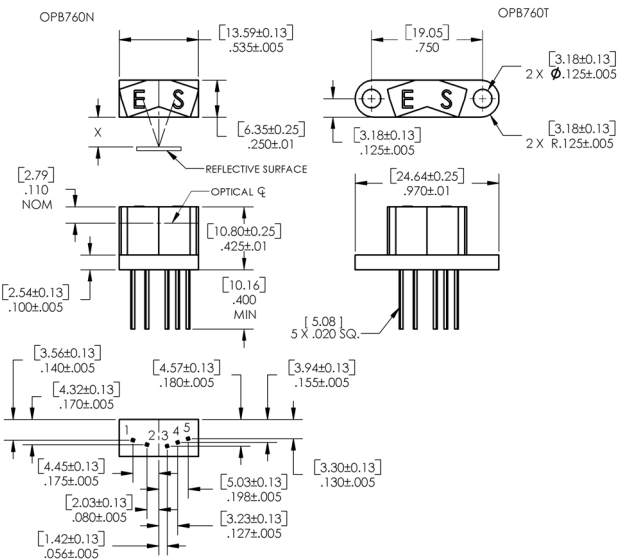
Photologic® Reflective Object Sensor



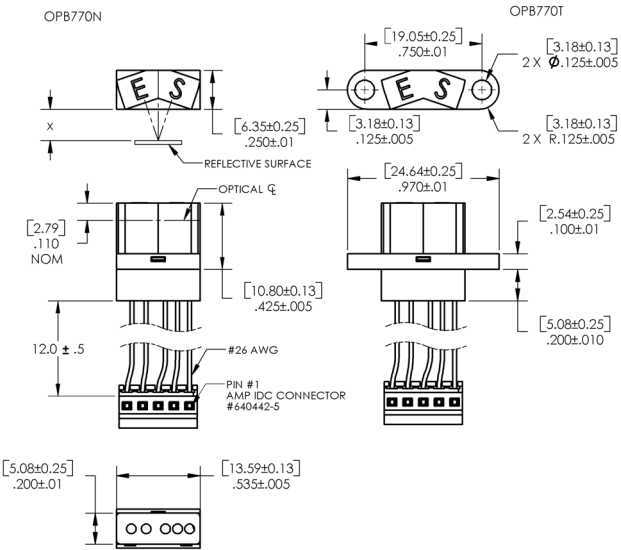
OPB760, OPB761, OPB762, OPB763 (Series N and T)
 OPB770, OPB771, OPB772, OPB773 (Series NZ and TZ)

Electrical Specifications

OPB760 (N and T Series)



OPB770 (NZ and TZ Series)



X = 0.08" [2.0mm] to 0.22" [5.6mm]

DIMENSIONS ARE IN: [MILLIMETERS]
 INCHES

Pin #	Description	Pin#	Description
1	Cathode	3	Ground
2	Anode	4	Output
		5	V _{CC}

Color/Pin#	Description	Color/Pin#	Description
Red-4	Anode	White-1	V _{CC}
Black-5	Cathode	Blue-2	Output
		Green-3	Ground

General Note
 TT Electronics reserves the right to make changes in product specification without notice or liability. All information is subject to TT Electronics' own data and is considered accurate at time of going to print.

OPTEK Technology, Inc.
 1645 Wallace Drive, Carrollton, TX 75006 | Ph: +1 972 323 2200
 www.optekinc.com | www.ttelectronics.com

Photologic® Reflective Object Sensor



OPB760, OPB761, OPB762, OPB763 (Series N and T)

OPB770, OPB771, OPB772, OPB773 (Series NZ and TZ)

Electrical Specifications

Absolute Maximum Ratings ($T_A=25^\circ\text{C}$ unless otherwise noted)

Supply Voltage, V_{CC} (not to exceed 3 seconds)	10 V
Storage Temperature Range	-40°C to $+85^\circ\text{C}$
Operating Temperature Range	-40°C to $+70^\circ\text{C}$
Lead Soldering Temperature (1/16" inch (1.6 mm) from case for 5 seconds with soldering iron) ⁽¹⁾	260°C
Input Diode Power Dissipation ⁽²⁾	100 mW
Output Photologic® Power Dissipation ⁽³⁾	200 mW
Total Device Power Dissipation ⁽⁴⁾	300 mW
Voltage at Output Lead (Open Collector Output)	35 V
Diode Forward DC Current	40 mA
Diode Reverse DC Voltage	3 V

Electrical Characteristics ($T_A = 25^\circ\text{C}$ unless otherwise noted)

SYMBOL	PARAMETER	MIN	TYP	MAX	UNITS	TEST CONDITIONS
--------	-----------	-----	-----	-----	-------	-----------------

Input Diode

V_F	Forward Voltage	-	-	1.8	V	$I_F = 40\text{ mA}$, $T_A = 25^\circ\text{C}$
I_R	Reverse Current	-	-	100	μA	$V_R = 2.0\text{ V}$, $T_A = 25^\circ\text{C}$

Output Photologic® Sensor

V_{CC}	Operating DC Supply Voltage	4.75	-	5.25	V	
I_{CCL}	Low Level Supply Current: Buffered Totem-Pole Output ⁽⁵⁾⁽⁶⁾ Buffered Open-Collector Output ⁽⁵⁾⁽⁶⁾	-	-	10	mA	$V_{CC} = 5.25\text{ V}$, $I_f = 0\text{ mA}$ (output open)
	Inverted Totem-Pole Output ⁽⁵⁾ Inverted Open-Collector Output ⁽⁵⁾	-	-	10	mA	
I_{CCH}	High Level Supply Current: Buffered Totem-Pole Output ⁽⁵⁾⁽⁶⁾ Buffered Open-Collector Output ⁽⁵⁾	-	-	10	mA	$V_{CC} = 5.25\text{ V}$, $I_f = 25\text{ mA}$ (output open)
	Inverted Totem-Pole Output ⁽⁵⁾⁽⁶⁾ Inverted Open-Collector Output ⁽⁵⁾⁽⁶⁾	-	-	10	mA	
I_{OH}	High Level Output Current: Buffered Open-Collector Output	-	-	100	μA	$V_{CC} = 4.5\text{ V}$, $I_f = 25\text{ mA}$, $V_{OH} = 30\text{ V}$, $T_A = 25^\circ\text{C}$
	Inverted Open-Collector Output	-	-	100	μA	

Notes:

- (1) RMA flux is recommended. Duration can be extended to 10 seconds maximum when flow soldering.
- (2) Derate linearly $2.22\text{ mW}/^\circ\text{C}$ above 25°C .
- (3) Derate linearly $4.44\text{ mW}/^\circ\text{C}$ above 25°C .
- (4) Derate linearly $6.66\text{ mW}/^\circ\text{C}$ above 25°C . Normal application would be with light source blocked, simulated by $I_f = 0\text{ mA}$.
- (5) Tested at $d = 0.080"$ (mm) from a 90% diffuse white test surface.
- (6) Normal application would be with light source blocked, simulated by $I_f = 0\text{ mA}$.
- (7) All parameters tested using pulse technique.

General Note

TT Electronics reserves the right to make changes in product specification without notice or liability. All information is subject to TT Electronics' own data and is considered accurate at time of going to print.

OPTEK Technology, Inc.
1645 Wallace Drive, Carrollton, TX 75006 | Ph: +1 972 323 2200
www.optekinc.com | www.ttelectronics.com

Photologic® Reflective Object Sensor



OPB760, OPB761, OPB762, OPB763 (Series N and T)

OPB770, OPB771, OPB772, OPB773 (Series NZ and TZ)

Electrical Specifications

Electrical Characteristics (T_A = 25°C unless otherwise noted)

SYMBOL	PARAMETER	MIN	TYP	MAX	UNITS	TEST CONDITIONS
Output Photologic® Sensor (continued)						
I _{F(+)}	LED Positive-Going Threshold Current ⁽²⁾	-	-	25	mA	V _{CC} = 5 V, T _A = 25° C
I _{F(+)} /I _{F(-)}	Hysteresis ⁽²⁾	1.1	-	2.0	-	V _{CC} = 5 V
I _{OS}	Short Circuit Output Current: Buffered Totem-Pole Output ⁽¹⁾	-15	-	-100	mA	I _F = 25 mA, V _{CC} = 5.25 V, Output = GRD
	Inverted Totem-Pole Output ⁽¹⁾	-15	-	-100	mA	I _F = 0 mA, V _{CC} = 5.25 V, Output = GRD
V _{OL}	Low Level Output Voltage: Buffered Totem-Pole Output ⁽¹⁾⁽⁴⁾	-	-	0.4	V	V _{CC} = 4.5 V, I _{OL} = 12.8 mA, I _F = 0 mA or I _F = 30 mA
	Buffered Open-Collector Output ⁽¹⁾⁽⁴⁾	-	-	0.4	V	
	Inverted Totem-Pole Output Inverted Open-Collector Output ⁽¹⁾⁽⁴⁾	-	-	0.4	V	V _{CC} = 4.5 V, I _{OL} = 12.8 mA, I _F = 25 mA
V _{OH}	High Level Output Voltage: Buffered Totem-Pole Output ⁽¹⁾	2.4	-	-	V	V _{CC} = 4.5 V, I _{OH} = -800 μA, I _F = 25 mA
	Inverted Totem-Pole Output ⁽¹⁾⁽⁴⁾	2.4	-	-	V	V _{CC} = 4.5 V, I _{OH} = -800 μA, I _F = 0 mA
	Inverted Totem-Pole Output ⁽³⁾ Inverted Open-Collector Output ⁽³⁾	2.4 2.4	-	-	V V	V _{CC} = 4.5 V, I _{OH} = -800 μA, I _F = 30 mA

Notes:

- (1) Tested at d = 0.080" (mm) from a 90% diffuse white test surface.
- (2) Tested at d = 0.080" (mm), 0.150" (mm) and 0.220" (mm) from a 90% diffuse white test surface. Reference: Eastman Kodak, Catalog #E 152 7795.
- (3) Tested at d = 0.080" (mm), 0.150" (mm) and 0.220" (mm) from a 5% diffuse black test surface.
- (4) Normal application would be with light source blocked, simulated by I_F=0 mA.
- (5) OPB760N through OPB763N series devices are terminated with 0.20" (mm) square leads designed for printed PCBoard mounting.
- (6) OPB770NZ through OPB773NZ series devices are terminated with 12 inches (mm) of 7-strand 26 AWG UL1429 insulated wire on each terminal. A standard AMP No. 640442-5 connector has been attached to the lead wires to ease connection to wire harnesses.
- (7) OPB760T through OPB763T series devices are terminated with 0.020" (mm) square leads designed for printed PCBoard mounting.
- (8) OPB770TZ through OPB773TZ series are terminated with 12" (mm) of 7-strand 26 AWG UL1429 insulated wire on each terminal. A standard AMP No. 640442-5 connector has been attached to the lead wires to ease connection to wire harnesses.
- (9) All parameters tested using pulse technique.

Photologic® Reflective Object Sensor

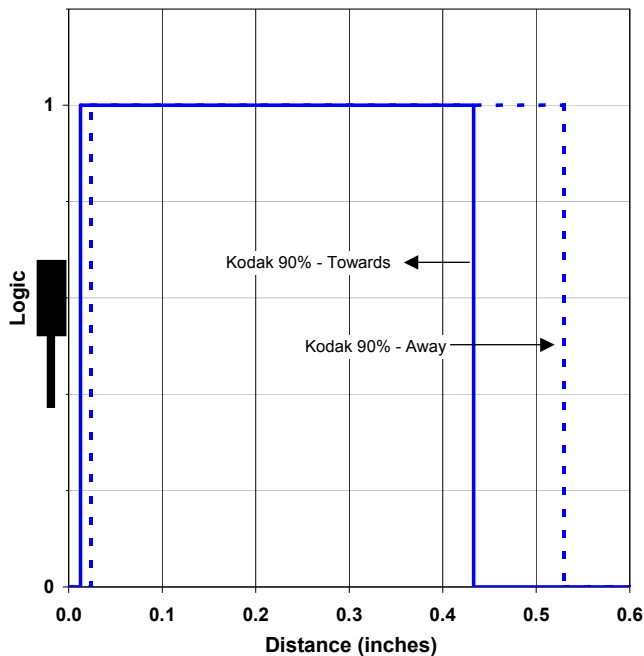


OPB760, OPB761, OPB762, OPB763 (Series N and T)

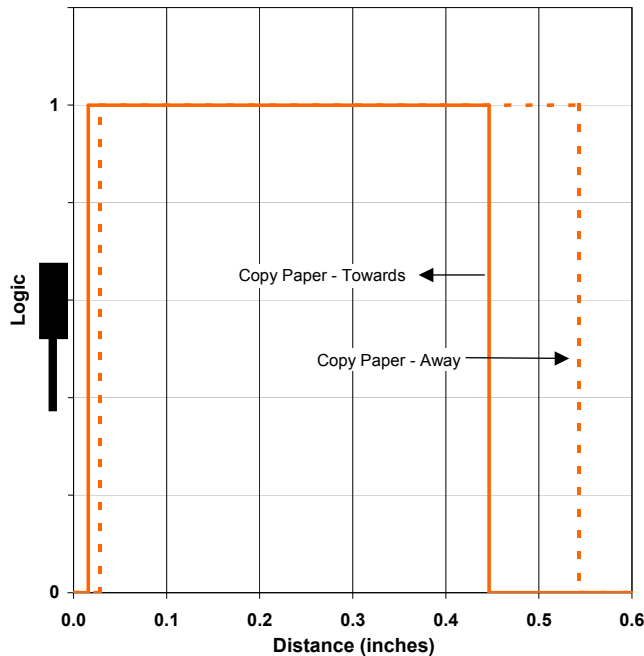
OPB770, OPB771, OPB772, OPB773 (Series NZ and TZ)

Performance

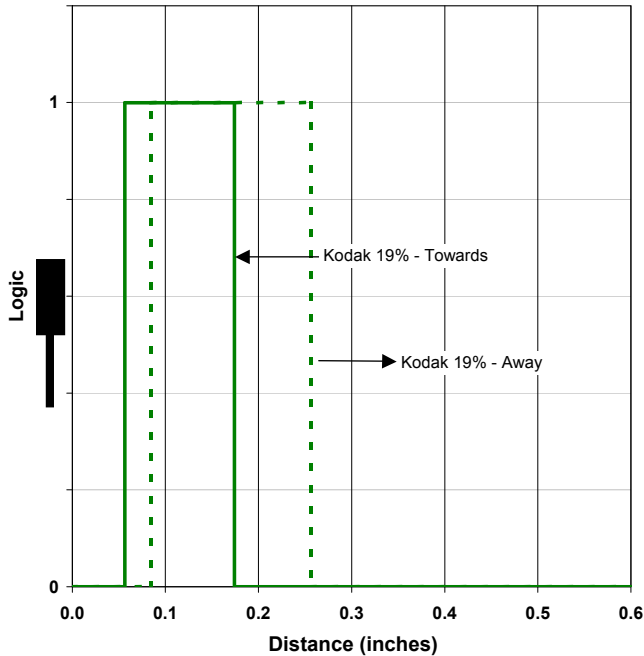
Logic Level vs Distance



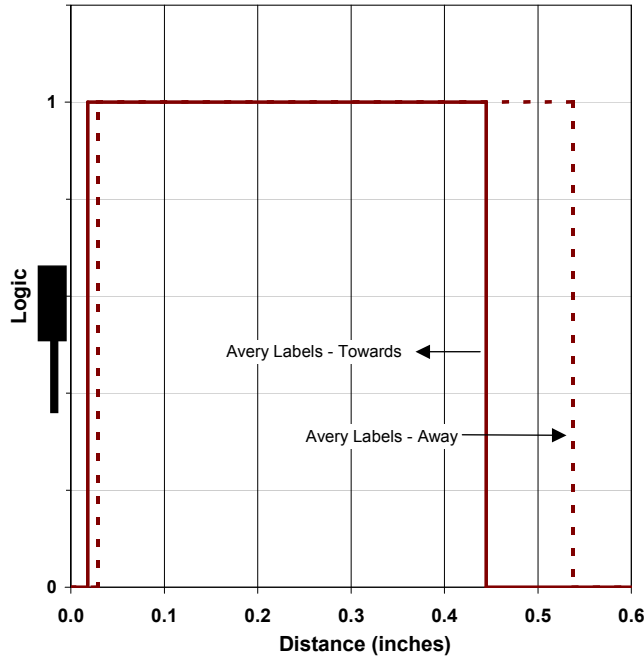
Logic Level vs Distance



Logic Level vs Distance



Logic Level vs Distance



General Note
TT Electronics reserves the right to make changes in product specification without notice or liability. All information is subject to TT Electronics' own data and is considered accurate at time of going to print.

OPTEK Technology, Inc.
1645 Wallace Drive, Carrollton, TX 75006 | Ph: +1 972 323 2200
www.optekinc.com | www.ttelectronics.com

Photologic® Reflective Object Sensor

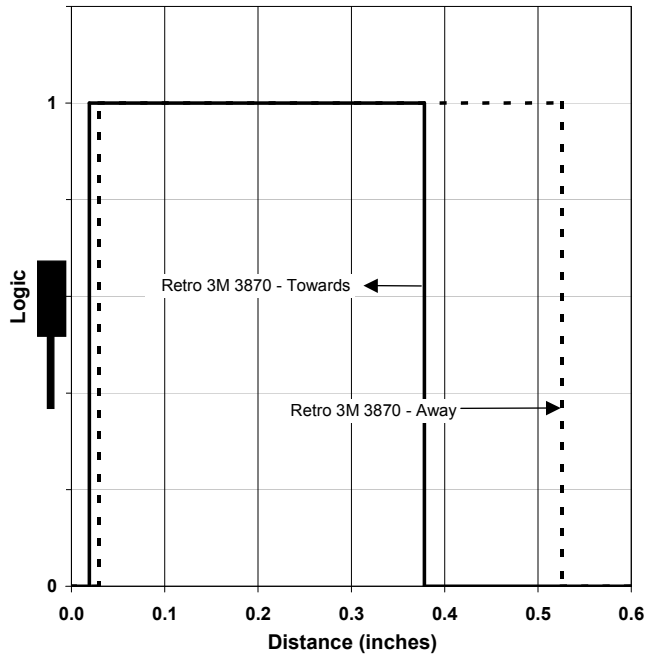


OPB760, OPB761, OPB762, OPB763 (Series N and T)

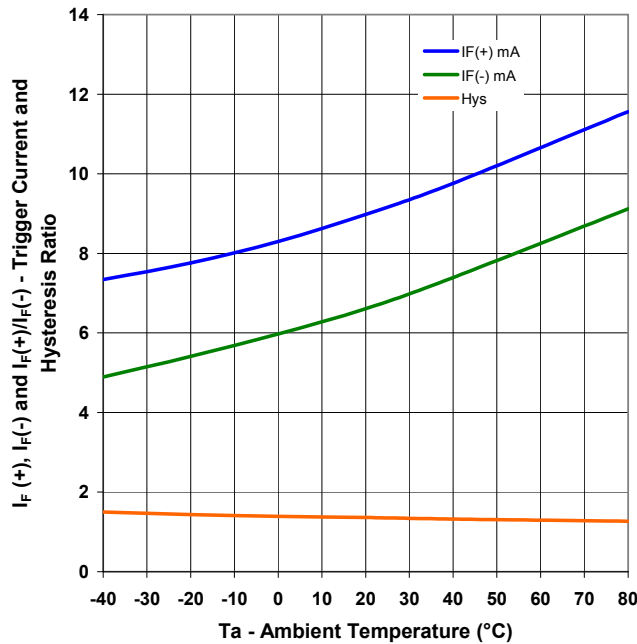
OPB770, OPB771, OPB772, OPB773 (Series NZ and TZ)

Performance

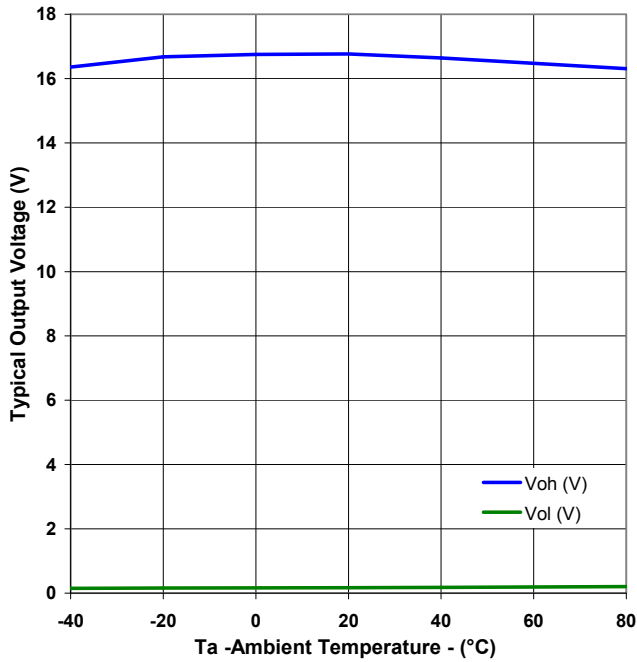
Logic Level vs Distance



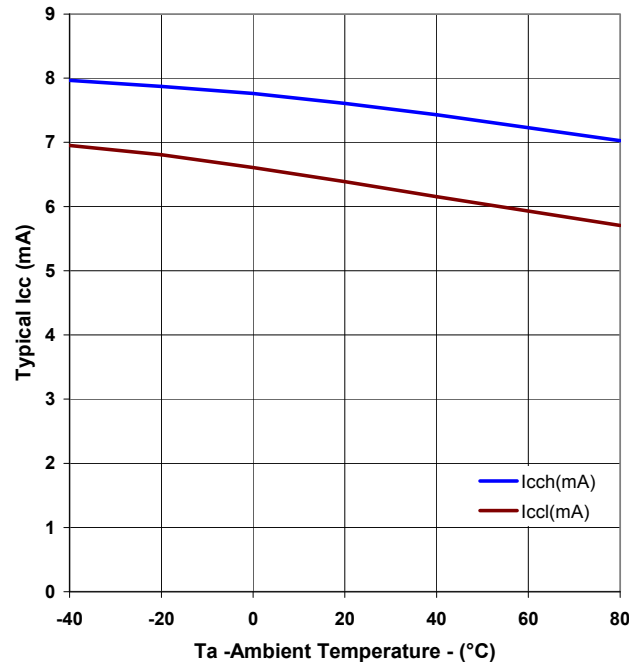
Typical Trigger Current and Hysteresis Ratio vs Ambient Temperature



Output Voltage vs Ambient Temperature



Supply Current vs Ambient Temperature



General Note
TT Electronics reserves the right to make changes in product specification without notice or liability. All information is subject to TT Electronics' own data and is considered accurate at time of going to print.

OPTEK Technology, Inc.
1645 Wallace Drive, Carrollton, TX 75006 | Ph: +1 972 323 2200
www.optekinc.com | www.ttelectronics.com

Mouser Electronics

Authorized Distributor

Click to View Pricing, Inventory, Delivery & Lifecycle Information:

TT Electronics:

[OPB770T](#) [OPB770N](#) [OPB771N](#) [OPB771T](#) [OPB772N](#) [OPB772T](#) [OPB773N](#) [OPB773T](#) [OPB770NZ](#) [OPB771NZ](#)
[OPB771TZ](#) [OPB772NZ](#) [OPB772TZ](#) [OPB773NZ](#) [OPB773TZ](#) [OPB760T](#) [OPB762N](#) [OPB762T](#) [OPB760N](#) [OPB761T](#)
[OPB761N](#) [OPB763T](#) [OPB763N](#) [OPB770TZ](#)